

SUPPLEMENTARY MATERIALS

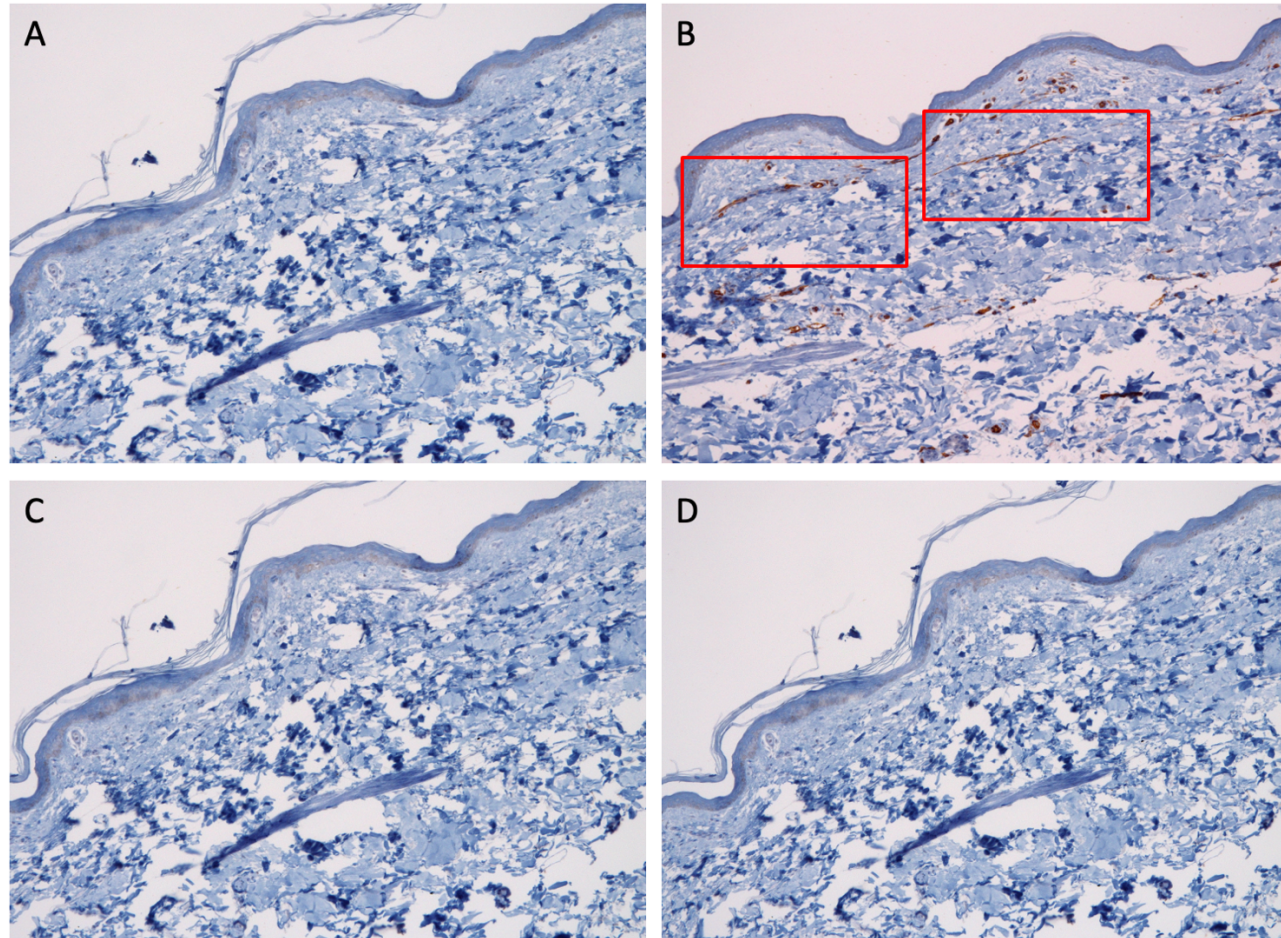
Mammalian Target of Rapamycin Pathway Assessment in Antiphospholipid Antibody Positive Patients with

Livedo

Sevim *et al.*

Supplementary Table S1. Demographic and Clinical Characteristics of Patients with Livedo Reticularis							
Gender	Age	History of Thrombosis	Pregnancy Morbidity	Non-Criteria Manifestations	aPL Profile	Skin Biopsy Site	Medications
Antiphospholipid Antibody Positive, without SLE							
F	71	No	No	No	LA	Left thigh	Nifedipine
M	57	Yes	N/A	No	aCL and a β_2 GPI	Right thigh	Aspirin Enoxaparin HCQ
F	36	Yes	No	AIHA	Triple positive	Left arm	-
F	55	Yes	No	Cognitive dysfunction	aCL and a β_2 GPI	Right arm	Enoxaparin
Antiphospholipid Antibody Positive, with SLE							
F	42	Yes*	N/A	No	LA	Right calf	Enoxaparin HCQ
F	40	Yes	No	No	LA	Left arm	Aspirin Enoxaparin HCQ**
F	54	Yes	Yes	Thrombocytopenia Cognitive dysfunction White matter lesions	Triple positive	Left thigh	Aspirin Warfarin HCQ
F	30	No	N/A	No	LA	Left forearm	HCQ
Antiphospholipid Antibody Negative, SLE							
F	26	N/A	No	No	N/A	Left forearm	HCQ
F	43	N/A	No	No	N/A	Left arm	HCQ
Non-criteria manifestations: Thrombocytopenia (platelet count <100.000/ μ L), AIHA (Autoimmune Hemolytic Anemia), Cardiac Valve Disease, aPL-associated nephropathy, Neurological Findings (Cognitive Dysfunction, Multiple Sclerosis-like Disease, Chorea, Seizure Disorder, White Matter Lesions); aPL: Antiphospholipid; SLE: Systemic Lupus Erythematosus; LA: Lupus Anticoagulant; aCL: Anticardiolipin Antibody; a β_2 GPI: anti- a β_2 Glycoprotein-I Antibody; HCQ: Hydroxychloroquine; *: History of CAPS; **: Also on Amlodipine, Colchicine, and Levothyroxine							

Supplementary Figure. Endothelial Cells in the Peripheral Skin Biopsy Sample of an aPL-Positive Patient without SLE



There is increased activity (brown staining/red boxes) of CD31 (B) indicating endothelial cells, but no positive staining of S6RP (A) and AKT (C) for mTOR activation, or Ki-67 (D) for proliferation in the corresponding areas. Images acquired at 10x magnification.

Supplementary Table S2. Comparison of Ki-67-positive Cell Counts Between Antiphospholipid Antibody (aPL)-positive (with/without lupus) and aPL-negative Lupus Patients

	aPL-positive without Lupus (n: 4)	aPL-positive with Lupus (n: 4)	aPL-negative Lupus (n: 2*)
Ki-67 Positive cells/Total cells (%)			
<i>Peripheral</i>			
Upper Surface Layer	215/2400 (9)	244/4326 (7)	274/1386 (20)
Lower Basal Layer	1177/2949(40)	1853/5754(32)	646/1556 (42)
Total	1392/5349 (26)	2097/10080 (21)	920/2942 (31)
<i>Central</i>			
Upper Surface Layer	114/1493(8)	186/2808 (7)	63/331 (19)
Lower Basal Layer	714/1838 (39)	1252/3518 (36)	202/422 (48)
Total	828/3331 (25)	1438/6326 (23)	265/753 (35)
aPL: Antiphospholipid Antibody; *: only one control sample available for analysis			