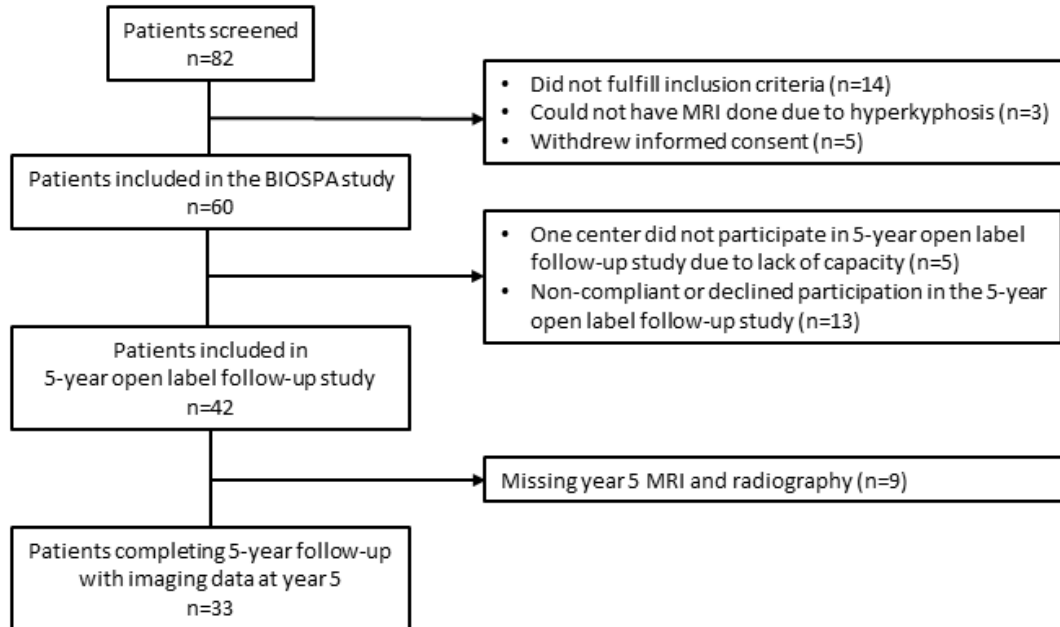


Supplementary figure 1. Patient Disposition



Supplementary Table 1. Adjusted annual change in Composite AxSpA MRI SIJ Structural Damage Scores (CSDS_{equal}, CSDS_{stepwise}, CSDS_{hierarchical}) and standardized response mean (SRM). Missing MRIs were imputed by linear interpolation.

	0-46 weeks	46 weeks-2 years	2-3 years	3-4 years	4-5 years
CSDS_{equal}					
All	0.2 (1.0) {0.20}	0.01 (0.4) {0.25}	-0.2 (1.9) {-0.11}	-0.2 (1.8) {-0.11}	0.3 (1.8) {0.17}
No-to-moderate ankylosis	0.3 (1.2) {0.25}	0.02 (0.5) {0.04}	-0.2 (2.3) {-0.09}	-0.3 (2.2) {-0.14}	0.5 (2.2) {0.23}
CSDS_{stepwise}					
All	3.3 (6.9) {0.48}	0.5 (2.0) {0.25}	0.7 (8.7) {0.08}	0.03 (5.1)* {0.01}	1.7 (8.0) {0.21}
No-to-moderate ankylosis	4.7 (7.9) {0.59}	0.8 (2.3) {0.35}	1.0 (10.9) {0.09}	0.05 (6.2)* {0.01}	2.5 (9.7) {0.26}
CSDS_{hierarchical}					
All	2.6 (5.0) {0.52}	0.6 (1.9) {0.32}	0.9 (8.1) {0.11}	0.4 (4.6)* {0.09}	1.4 (5.6) {0.25}
No-to-moderate ankylosis	3.7 (5.8) {0.64}	0.8 (2.3) {0.35}	1.4 (9.9) {0.14}	0.6 (5.6)* {0.11}	2.0 (6.8) {0.29}

Data are shown as mean (SD) and standardized response mean {SRM}. Values in bold are statistically significant. The progression in CSDS (i.e. annual change) was calculated by linear interpolation as the change between MRI scans divided by the exact time interval (years) between MRI assessments. Comparison of annual progression week 0-46 with the other time intervals were calculated with Wilcoxon signed-rank test. *P<0.05. SRM calculated as mean_{change}/SD_{change}. No-to-moderate ankylosis was defined as a baseline SPARCC SSS for ankylosis <7. AxSpA: axial spondyloarthritis; CSDS: Composite Structural Damage Score; MRI: magnetic resonance imaging; SIJ: sacroiliac joint.

Supplementary Table 2. Adjusted annual change in Composite AxSpA MRI SIJ Structural Damage Scores (CSDS_{equal}, CSDS_{stepwise}, CSDS_{hierarchical}) and standardized response mean (SRM). Sensitivity analysis, with missing MRIs imputed with ‘Last observation carried forward’.

	0-46 weeks	46 weeks-2 years	2-3 years	3-4 years	4-5 years
CSDS_{equal}					
All	0.2 (1.0) {0.20}	0.01 (0.42) {0.03}	-1.6 (1.8) {-0.89.}	-0.2 (1.8) {-0.11.}	0.3 (1.8) {0.17}
No-to-moderate ankylosis	0.3 (1.2) {0.25}	0.02 (0.5) {0.04}	-0.2 (2.2) {-0.09}	-0.3 (2.1) {-0.14.}	0.5 (2.2) {0.23}
CSDS_{stepwise}					
All	3.2 (6.8) {0.47}	0.5(1.9) {0.26}	0.6 (8.6) {0.07}	0.03(4.9)* {0.01}	1.7 (8.0) {0.21}
No-to-moderate ankylosis	4.5 (7.8) {0.58}	0.8 (2.3) {0.35}	1.0 (10.6) {0.09}	0.04 (5.9)* {0.01}	2.5 (9.7) {0.26}
CSDS_{hierarchical}					
All	2.5 (5.0) {0.50}	0.5 (1.8)* {0.28}	0.9 (7.9) {0.11}	0.4 (4.5)* {0.09}	1.4 (5.6) {0.25}
No-to-moderate ankylosis	3.6 (5.7) {0.63}	0.8 (2.2)* {0.36}	1.3 (9.7) {0.13}	0.6 (5.4)* {0.11}	2.0 (6.8) {0.29}

Data are shown as mean (SD) and standardized response mean {SRM}. Values in bold are statistically significant. The progression in CSDS (i.e. annual change) was calculated as the change between MRI scans divided by the exact time interval (years) between. Missing MRIs were imputed with ‘Last observation carried forward’. Comparison of annual progression week 0-46 with the other time intervals were calculated with Wilcoxon signed-rank test. *P<0.05. SRM calculated as $\text{mean}_{\text{change}}/\text{SD}_{\text{change}}$. No-to-moderate ankylosis was defined as a baseline SPARCC SSS for ankylosis <7.

AxSpA: axial spondyloarthritis; CSDS: Composite Structural Damage Score; MRI: magnetic resonance imaging; SIJ: sacroiliac joint.