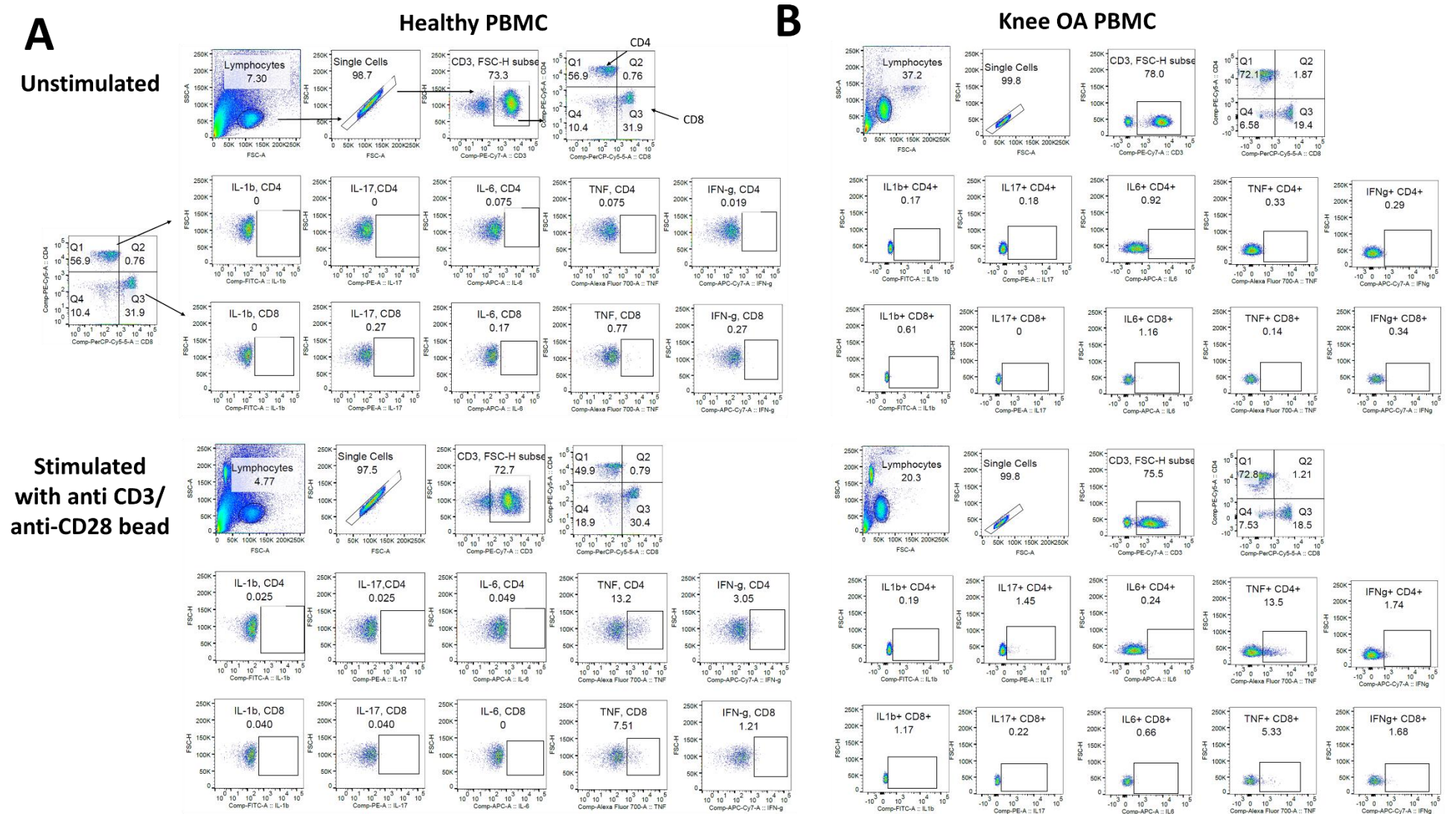
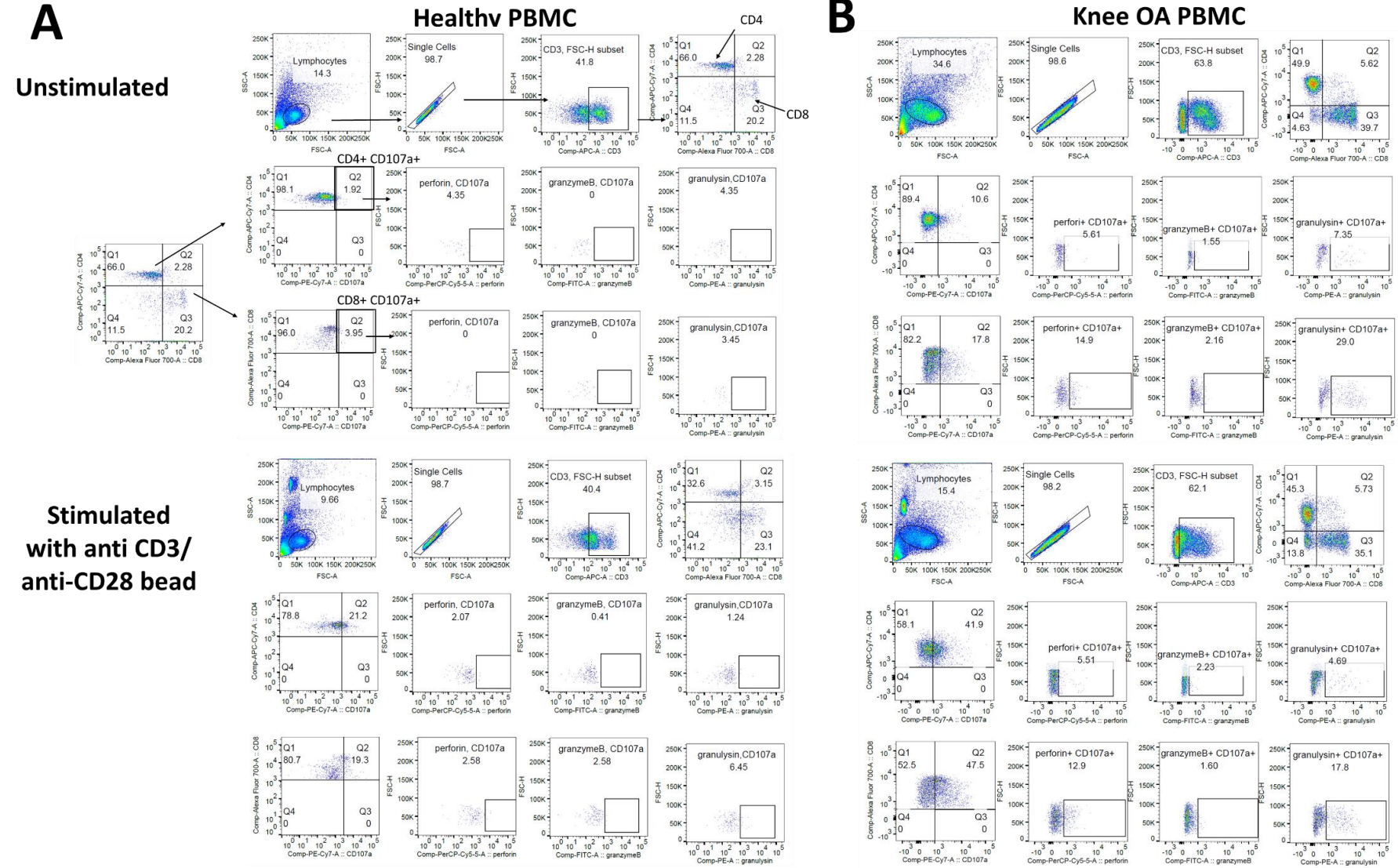


Supplementary Figure 1.



**Figure 1** Representation FACS plot of cytokine-producing CD4+ and CD8+ T cells from peripheral blood of (A) healthy individuals and (B) knee OA patients. Shown are the frequency of cytokine-producing CD4+ and CD8+ T cells (IL-1 $\beta$ , IL-17, IL-6, TNF and IFN- $\gamma$ ) in unstimulated and stimulated with anti-CD3/anti-CD28 beads from peripheral blood from healthy individuals and knee OA patients.

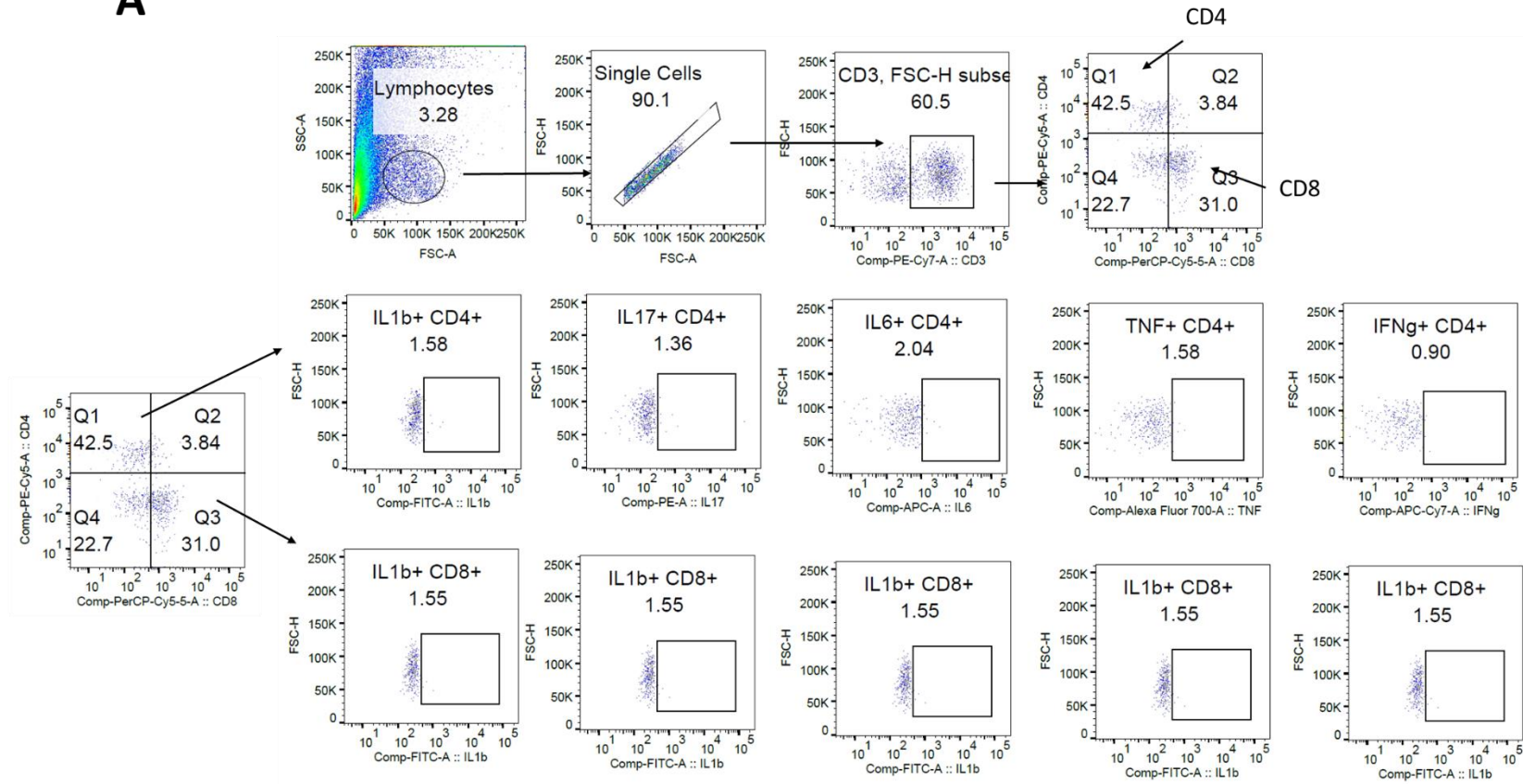
**Supplementary Figure 2**



**Figure 2** Representation FACS plot of cytotoxic molecules-producing CD4+ and CD8+ T cells from peripheral blood of (A) healthy individuals and (B) knee OA patients. Shown are the frequency of cytotoxic molecules-producing CD4+ and CD8+ T cells (perforin, granzyme B and granulysin) in unstimulated and stimulated with anti-CD3/anti-CD28 beads from peripheral blood from healthy individuals and knee OA patients.

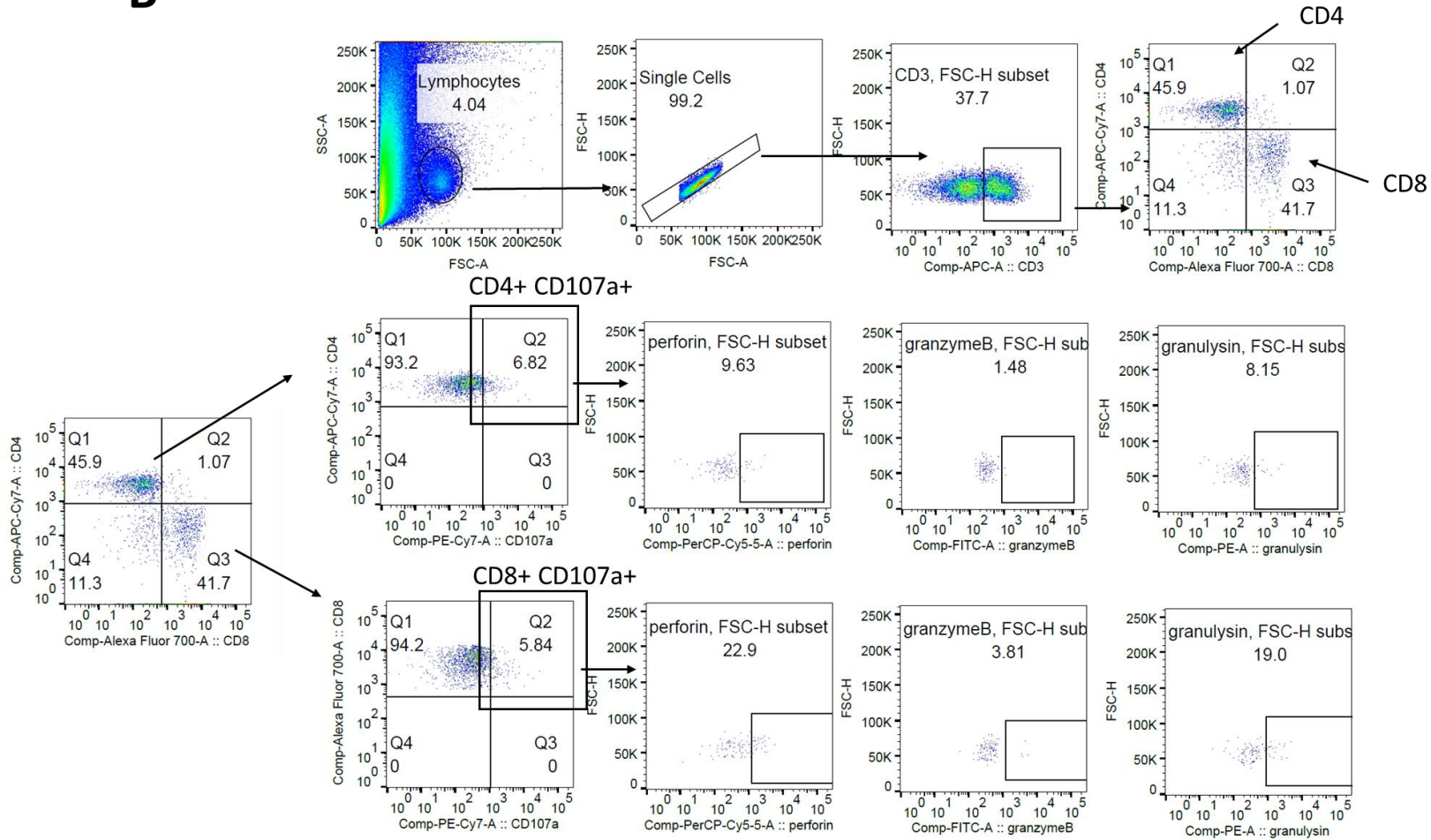
**Supplementary Figure 3A**

**A**



**Supplementary Figure 3B**

**B**



Online supplement to Functional and T Cell Receptor Repertoire Analyses of Peripheral Blood and Infrapatellar Fat Pad T Cells in Knee Osteoarthritis, *The Journal of Rheumatology*, doi:10.3899/jrheum.170775

**Figure 3** Representative FACS plot of (A) cytokines (IL-1 $\beta$ , IL-17, IL-6, TNF and IFN- $\gamma$ ) and (B) cytotoxic molecules (perforin, granzyme B and granulysin) -producing CD4+ and CD8+ T cells from infrapatellar fat pad of knee OA patients.

**Supplementary Figure 4.** Summary diagram comparing characteristics of peripheral blood T cells and IPFP T cells in knee OA patients.

