

Enthesitis-related arthritis: prevalence and complications of associated uveitis in children and adolescents from a population-based nation-wide study in Germany

Walscheid K^{*1,2}, Glandorf K^{*1}, Rothaus K¹, Niewerth M³, Klotsche J^{3,4}, Minden K^{3,5}, Heiligenhaus A^{1,6}.

(1) Department of Ophthalmology at St. Franziskus Hospital, Muenster, Germany

(2) Department of Ophthalmology, University Hospital Essen, Essen, Germany

(3) German Rheumatism Research Center, a Leibniz Institute, Berlin, Germany

(4) Charité – University Medicine Berlin, Institute for Social Medicine, Epidemiology and Health Economics, Berlin, Germany

(5) Charité - University Medicine Berlin, Department of Rheumatology and Clinical Immunology, Berlin, Germany

(6) University of Duisburg-Essen, Germany

*Both authors contributed equally to this study.

Corresponding author:

Karoline Walscheid, MD, FEBO

Department of Ophthalmology at St. Franziskus Hospital

Hohenzollernring 74

48145 Muenster, Germany

Phone #49-251-935-2711, Fax #49-2251-935-2719

email: karoline.walscheid@uveitis-zentrum.de

Short title: Uveitis in enthesitis-related arthritis

Funding: none

Disclosure statement: KW has received honoraria from Novartis, KG none, KR none, MN none, JK none, KM is funded by the Rheumastiftung and has received research grants from BMBF (FKZ, 01ER1504A), Pfizer, AbbVie, and Roche and honoraria from AbbVie, Biermann, gsk, Medac, Sanofi. AH has received research grants from BMBF (FKZ, 01ER1504C), DFG (He 1877/19-1), Pfizer, and Novartis and honoraria from AbbVie, Biermann, Alimera Sciences, Allergan, MSD Sharp and Dohme, Pfizer, Santen, and Xoma.

Downloaded on April 17, 2024 from www.jrheum.org

Abstract

Background: Enthesitis-related arthritis (ERA) represents a subgroup of juvenile idiopathic arthritis (JIA) which is regularly accompanied by anterior uveitis. This study describes the prevalence and characteristics of ERA-related uveitis.

Methods: Cross-sectional data from the National Pediatric Rheumatological Database (NPRD) were used to characterize ERA-related uveitis (ERA-U). In addition to sociodemographic parameters, we documented the occurrence of uveitis and course of disease - including symptoms, visual acuity, and complications - as well as JIA characteristics such as disease activity (cJADAS10), functional ability (CHAQ score), laboratory parameters, and treatment.

Results: In the years from 2002 to 2014, 3,778 (15.2%) of a total of 24,841 JIA patients recorded in the NPRD had ERA, and 280 (7.4%) of them had developed uveitis. Detailed ophthalmological documentation by an uveitis add-on module was available for 22.9% of these patients. Uveitis onset was acutely symptomatic in 63% of patients. Patients with uveitis were more frequently male, HLA-B27 positive, and younger at ERA onset, and they had higher ESR values at first uveitis documentation than those without uveitis. Uveitis was diagnosed at a mean age of 11.5 (\pm 3.9) years (50% within two years after ERA onset). Systemic treatment with corticosteroids and synthetic and biologic disease-modifying antirheumatic drugs was associated with a (not significantly) lower risk of developing uveitis.

Conclusions: The course of disease in ERA-U patients is frequently similar to HLA-B27-associated uveitis in adults; however, a subgroup of patients presents with asymptomatic uveitis.

Introduction

Juvenile idiopathic arthritis (JIA) comprises a heterogeneous group of diseases with chronic arthritis of at least 6 weeks' duration and onset before the age of 16 years. According to the clinical features at onset, seven categories of JIA can be distinguished in correspondence with the International League of Associations for Rheumatology (ILAR) classification(1). Enthesitis-related arthritis (ERA) is a defined JIA category, which presents with arthritis and/or enthesitis and may also involve the axial skeleton(2).

ERA shares many features of spondyloarthritis (SpA), which typically occurs in adults, but may also begin in childhood or adolescence(3). However, the initial manifestation of juvenile and adult SpA is often different, with less axial involvement, but more frequent inflammation of peripheral joints and entheses in children(4). When applying the ILAR criteria for JIA to patients with symptoms of juvenile SpA, the majority is classified as ERA or undifferentiated arthritis(4). A common extra-articular manifestation of both SpA and ERA is anterior uveitis (SpA-U, ERA-U). As the literature on pediatric ERA-U is scarce and the disease often resembles SpA-U in the adult population, recommendations for management of ERA-U are frequently derived from what is known from SpA patients.

While disease characteristics and treatment approaches are provided for ERA(5), no comprehensive data regarding onset and long-term course of the associated uveitis in childhood and adolescence are available. Previous studies on SpA in adults point to male gender and HLA-B27 as risk factors for uveitis occurrence, which has also been found in children(6-8).

For adults, the long-term prognosis of HLA-B27-associated uveitis has been found to be relatively good(9), while such data are not provided for children. We therefore employed the National Pediatric Rheumatological Database (NPRD) in Germany in

Downloaded on April 17, 2024 from www.jrheum.org

order to describe the clinical course and outcome of uveitis in the ERA patients documented therein.

Materials and Methods

Patient data

All patients with ERA recorded in the NPRD between 2002 and 2014 were considered in this analysis. In the NPRD, physician- and patient-reported data are yearly recorded by standardized questionnaires. For more details regarding this database, see supplements and previously published data(7).

The study was approved by the Ethics Committee of the Charité – Universitaetsmedizin Berlin (approval number EA1/044/07).

Patients' and/or parents' informed consent to participate in the study was obtained according to the declaration of Helsinki, and the design of the work conforms with the standards currently applied in Germany.

Statistical analysis

Data were analyzed by using the statistics program R (Version 3.2.5). Data were tested for normal distribution by Shapiro-Wilk test. For further analysis, t-test, Mann-Whitney-U test, Chi²-test, Wald's test, or ANOVA were applied as appropriate. Logistic regression analyses were applied to identify correlates of uveitis occurrence and correlation between uveitis symptoms and age at onset as well as arthritis disease duration. Results were expressed as mean and standard deviation, odds ratio (OR), and 95% confidence interval (CI). A significance level of 5% was used for all analyses. Kaplan-Meier analysis was applied to analyze the onset of uveitis as a function of ERA disease duration.

Due to the varying degree of available documentation, different patient groups were

Downloaded on April 17, 2024 from www.jrheum.org

used for statistical analysis of different questions as described below. All ERA patients with at least one rheumatological documentation were referred to group "ERA". It was noted whether uveitis had been diagnosed (n=280 patients with uveitis; group "ERA-U"). Those for whom detailed ophthalmological documentation on uveitis (uveitis module) was available were referred to as the ERA-UM group.

For analysis of the association between treatment and the likelihood of uveitis occurring, two groups were selected: Systemic treatment in all ERA-U patients (n=280) was compared to systemic treatment in a selected group of prospectively documented ERA patients (n=273; "ERA_prosp") fulfilling the following criteria: no uveitis at baseline documentation and no uveitis development throughout NPRD documentation, duration between ERA onset and baseline of \leq one year, and minimum follow-up documentation of three years.

Results

Patient characteristics

Of a total of 24,841 JIA patients enrolled in the NPRD from 2002 to 2014, 3,778 had ERA (group "ERA") and were included in the analysis. Uveitis was diagnosed in 2,693 (10.8%) of all JIA patients and in 280 (7.4%) (group "ERA-U") of the 3,778 ERA cases. The baseline characteristics of ERA and ERA-U patients are compared in table 1. ERA-U patients were more frequently male, HLA-B27 positive, and younger at ERA onset, and they had a significantly higher ESR value at initial documentation than ERA patients without uveitis. The mean follow-up documentation period in the NPRD was longer for ERA-U than ERA patients (2.8 ± 2.7 vs 1.4 ± 2.0 years, $p < 0.001$).

In 64 (22.9%) of the ERA-U patients (group "ERA-UM"), detailed information for uveitis at first and current visit to the attending ophthalmologist was available via the

Downloaded on April 19, 2024 from www.jrheum.org

Accepted Article

add-on uveitis module. Patients from the ERA-UM group were slightly younger at baseline documentation and the follow-up period documented in the NPRD was longer than for those from the ERA-U group (3.8 ± 3.0 "ERA-UM" vs 2.4 ± 2.6 years "ERA-U" without uveitis module, $p < 0.0001$). As these groups did not differ significantly with respect to sex, age at onset of arthritis, laboratory parameters (except for a slightly higher percentage of patients being ANA positive in the ERA-UM group), and CHAQ- and cJADAS10-values at baseline, data from those with ophthalmological documentation were considered representative for the uveitis patient group and were utilized for further statistical analysis of the ophthalmological characteristics.

Uveitis onset

Uveitis initially occurred between the ages of two and 19 years (mean 11.5 ± 3.9 years) (fig. 1B). Between two and ten years, uveitis manifestation increased steeply. In 25% of all ERA-U patients, disease onset occurred between 10 and 12 years of age.

In more than 20% of ERA-UM patients, uveitis was the initial disease manifestation: In 17.2 % and 5.2% of patients, uveitis onset preceded arthritis by 0 to 2 years and by 2 to 4 years, respectively. In the majority of ERA-UM patients, uveitis developed within the first two years after arthritis diagnosis; only approximately 10% of patients were diagnosed with uveitis after four years of arthritis (fig. 1 C). In contrast, Kaplan-Meier analysis of all ERA patients demonstrated a relatively homogeneous risk distribution for developing uveitis during the first 10 years after arthritis onset (fig. 2a). This apparent contrast is due to the analysis of different patient collectives: Using a right-censored model for Kaplan-Meier analysis, the number of patients available for analysis drops markedly due to the relatively large percentage of short-term

Downloaded on April 17, 2024 from www.jrheum.org

documentation (fig. 2b), whereas the relative portion of those developing uveitis is rather stable. In contrast, the ERA-UM subgroup consists of selected uveitis patients with a detailed, but also mostly short-term, ophthalmological documentation and disease characteristics differing slightly from those of the ERA group.

The likelihood of developing uveitis was associated with a young age at ERA onset: In children aged ≤ 10 years at arthritis onset, the risk of developing uveitis was 9.2%, whereas the likelihood was 6.9% in those with ERA onset after 10 years of age ($p=0.014$). ANA status was similar between those patients aged younger / older than 10 years at ERA onset (ANA+ 75.4%, ANA- 76.1%). Patients with ERA onset before 10 years of age were more frequently HLA-B27 positive (40.5% vs 34.6%, $p=0.0007$).

Uveitis characteristics

Clinical characteristics of uveitis were analyzed in the ERA-UM group ($n=64$). In 63%, symptomatic onset of uveitis flares was documented. A correlation between symptomatic uveitis and higher age at arthritis onset was observed (OR=1.23, CI 1.03;1.48, $p=0.025$), whereas no statistically significant correlation was found between ERA disease duration and uveitis symptoms (OR=0.9, CI 0.71;1.15, $p=0.41$). Clinical data of patients with symptomatic and asymptomatic uveitis are displayed in table 4. In the majority of cases (83%), uveitis was unilateral during the course of disease. Uveitis was classified most frequently as anterior uveitis (88%) and less frequently involved primarily the posterior eye segments (12%). The course of uveitis episodes after initial manifestation was acute in the majority of patients (46%, with sudden onset and limited duration), recurrent (28%, repeated episodes separated by periods of inactivity without systemic and topical treatment ≥ 3 months in duration), or chronic (25%, persistent uveitis with relapse in < 3 months after discontinuing systemic and topical treatment).

Downloaded on April 17, 2024 from www.jrheum.org

Ocular complications had already developed in 44% at the initial visit (table 2), and the mean visual acuity was 0.19 logMAR (± 0.33 SD) at baseline and 0.17 logMAR (± 0.32 SD) at last documentation. In one patient, BCVA was hand movements and counting fingers in one eye on all visits documented, which would mean legal blindness in this eye.

Course of disease in relation to HLA-B27- and ANA status

As a relatively high number of patients reported asymptomatic uveitis onset, and the clinical entity of acute anterior uveitis has been previously linked to the presence of HLA-B27(14), we analyzed disease characteristics in relation to HLA-B27 status in the ERA-UM group. Of those patients, two were both ANA and HLA-B27 negative; six were ANA positive and HLA-B27 negative; 23 were HLA-B27 positive and ANA negative; and nine were both ANA and HLA-B27 positive. The frequency of symptomatic uveitis onset was somewhat, but not significantly, higher in HLA-B27 positive patients (symptomatic onset in 74% [32 out of 43]) than in those who were HLA-B27 negative (44.4% [4 out of 9]) ($p=0.17$). ANA positive patients more frequently had asymptomatic uveitis (43% [6 out of 14 ANA positive patients]) than ANA negative patients (9% [2 out of 22 ANA negative patients]; $p=0.05$). The frequency of complications at disease onset did not differ significantly between HLA-B27- or ANA-positive and -negative patients; however, mean BCVA at onset differed depending on the presence of HLA-B27 (0.3 logMAR [± 0.44 SD] in HLA-B27-positive vs 0.14 [± 0.4 SD] in HLA-B27-negative patients, $p=0.05$), but not with ANA status.

In order to identify the influence of HLA-B27- and ANA-positivity on the occurrence of uveitis, we performed a multivariate survival analysis of all ERA patients. We applied the Cox proportional hazard model (variables: sex, HLA-B27 positivity, ANA positivity, age at ERA onset [metric scale; hazard ratio as a function of risk per year]) with right-

Downloaded on April 17, 2024 from www.jrheum.org

censored event times. Here, we could identify presence of HLA-B27 (Hazard ratio 1.77; CI 1.27, 2.45; $p < 0.001$) and age at ERA onset (Hazard ratio 1.11; CI 1.06, 1.16; $p < 0.0001$) as independent risk factors, whereas the risk for development of uveitis was not influenced by ANA status (Hazard ratio 1.27; CI 0.92, 1.75; $p = 0.149$) or sex (Hazard ratio 1.25; CI 0.92, 1.69; $p = 0.156$).

Treatment of uveitis patients

Initial treatment of the ERA-U group

Data from 280 ERA-U patients documenting medical treatment during the 12 months prior to and at NPRD baseline documentation were available for analysis. Indication for treatment (medication given for uveitis or arthritis) was not reported and could not be considered for analysis. At baseline documentation and during the previous 12 months, 76% ($n=213$) of ERA-U patients had been treated with NSAIDs, 33% with oral low-dose corticosteroids (< 0.2 mg/kg body weight, $n=91$), 15% with oral high-dose corticosteroids (≥ 0.2 mg/kg body weight, $n=42$), and 9% with corticosteroid pulse therapy (10-30mg/kg body weight methylprednisolone i.v. for 3 days, $n=24$). Methotrexate (MTX) was used in 51% ($n=142$), followed by sulfasalazine (27%, $n=76$) and cyclosporine A (8%, $n=23$). Within the group of biological DMARDs, etanercept (21%; $n=58$) and adalimumab (13%; $n=36$) had been given already before and/or at baseline documentation.

Therapy prior to and after uveitis manifestation

We then analyzed therapeutic strategies at initial study documentation and at the first documentation after uveitis manifestation in the ERA-UM group (table 3). With uveitis manifestation, the use of NSAIDs decreased, whereas corticosteroids and biologics were given more frequently.

Local medical treatment

Local treatment was analyzed in the ERA-UM group. At initial documentation with the uveitis module (mean time between initial manifestation of uveitis and documentation 2.31 ± 2.41 years), topical therapy consisted of corticosteroids (47%), cycloplegics (24%), NSAIDs (11%), or antiglaucomatous agents (7%). Another 33% of the patients did not receive any local therapy at initial documentation, while local treatment was not documented in 20%. At any time during the entire follow-up documentation, 93% of patients were treated with topical corticosteroids, NSAIDs (26%), cycloplegics (72%), or antiglaucomatous agents (14%). In all, 14% received subconjunctival or parabolbar corticosteroid injections.

Surgery

At first uveitis documentation, six surgical interventions had already been performed for uveitis complications (cataract surgery, n=3, glaucoma surgery n=2, and vitrectomy n=1). The number of surgical interventions that had been performed by the time of the last available ophthalmological follow-up documentation increased to n=13 (cataract, n=7 [n=6 with intraocular lens implantation], vitrectomy n=1, glaucoma surgery n=3, and other procedures n=2).

Effect of systemic therapy on uveitis occurrence

In order to determine the association of systemic therapy with the likelihood of uveitis, therapeutic strategies in the ERA-U group (n=280) and an incident and prospectively observed ERA group (ERA_prosp) without ocular involvement (n=268) were analyzed.

DMARD treatment was associated with a reduced risk for developing uveitis; however, only trends, none of them significant, were observed: Corticosteroid intake decreased the OR for developing uveitis (<0.2 mg/kg: OR 0.78, CI 0.41;1.49; ≥0.2 mg/kg: OR 0.41, CI 0.14;1.21; steroid pulse therapy: OR 0.33, CI 0.09;1.26). Among the cDMARDs, MTX (OR 0.75, CI 0.46;1.22) and sulfasalazine (OR 0.89, CI 0.53;1.51) decreased the risk for uveitis onset. Regarding bDMARD therapy, etanercept, given as monotherapy (n=5 ERA-U patients and n=6, ERA_prosp) or combined with MTX (n= 3 ERA-U patients and n=5 ERA_prosp) decreased the risk for uveitis manifestation (OR 0.53, CI 0.21;1.37); however, this finding was not significant and the patient groups receiving this medication were very small. NSAID treatment did not decrease, but rather increased the risk for developing uveitis (OR 1.76, CI 1.04;2.99); this was the only significant effect observed.

The numbers of patients receiving other medications (azathioprine, leflunomide, cyclosporine, and adalimumab) were too low to obtain meaningful results and were therefore not analyzed.

Discussion

About 10% to 20% of JIA patients are diagnosed with ERA(5, 15), and disease characteristics of uveitis associated with ERA are assumed to be different from those of oligoarthritis-associated uveitis; however, little is known about the clinical course of ERA-associated uveitis in children and adolescents. Recommendations for management of this uveitis entity are derived either from uveitis associated with other JIA subtypes or from (mostly HLA-B27-related) acute anterior uveitis of patients with SpA in adulthood. We therefore analyzed disease characteristics of juvenile patients with ERA-U, which were followed in the context of a large JIA cohort, the German NPDR.

Frequency of uveitis in this cohort was in line with previously published data on children with ERA, as were the numbers of ERA patients in whom HLA-B27 or ANA were detected(5, 16, 17). Younger age at ERA onset was associated with uveitis development, as it is well established for the JIA population in general(15, 18, 19), and has also been demonstrated especially for the subgroup of ERA patients previously (17). In their inception cohort, Saurenmann et al. found a significant increase in risk for development of uveitis in those ERA patients who were ANA positive and female (17); an association which was not found in our patients, although demographic data regarding frequency of uveitis in ERA patients, age at ERA and uveitis onset and numbers of patients being ANA positive were similar. In our cohort, children with ERA-U were more frequently male and HLA-B27 positive than those without uveitis manifestation, and they presented with more pronounced systemic inflammatory activity at baseline documentation, as indicated by a higher ESR. Previously, HLA-B27-positive ERA patients were found to have acute anterior uveitis more frequently than those who were HLA-B27 negative(20). The predominance of the male sex and HLA-B27 positivity among patients with uveitis has also been described in SpA-associated disease(21) and are distinguishing features of ERA, in contrast to oligo- or RF-negative polyarthritis-related uveitis that is seen more frequently and where the female sex and ANA positivity predominate and HLA-B27 is not an independent risk factor(8, 22). Furthermore, our finding regarding ESR elevation is similar to what Haasnot et al.(22) demonstrated for a subset of children with JIA oligo- and polyarthritis and was also found in a German inception cohort of JIA children, where both ESR and S100A12, another marker of systemic inflammation, were shown to be associated with an increased risk for developing uveitis (15). The mean ESR levels measured here were lower than those documented in the other two studies(15, 22), which is probably due to the fact that

Downloaded on April 17, 2024 from www.jrheum.org

the ESR levels were determined at or at least close to JIA diagnosis and ours were measured at study inclusion with the majority of patients already being treated with systemic anti-inflammatory medication. Previously, ESR has also been identified as a risk factor for relapses of HLA-B27-associated anterior uveitis(23).

Previous studies have disclosed a reduced risk for developing uveitis and for a more favorable disease course in JIA patients treated with DMARDs, namely, with MTX, and a combination therapy with etanercept or adalimumab(15, 24). We were not able to demonstrate a statistically significant effect in our cohort, but can only report a trend towards risk reduction in our patients. Treatment with NSAIDs was (significantly) associated with an increased risk for developing uveitis. Given the fact that the majority of ERA patients are initially treated with NSAID therapy only(16), this might require some reconsideration if future studies confirm our findings. As we were not able to conduct a multivariate analysis investigating the potential impact of other risk factors for uveitis development, we cannot say whether NSAID treatment is an independent risk factor or is correlated with other clinical characteristics accounting for the effect observed. It might as well be that those patients treated with NSAID monotherapy were influenced by other factors including disease activity, age group, HLA-B27 or ANA status, etc. However, given what is already published on the protective effect of early DMARD treatment (15, 24), it is tempting to speculate that the same is true for ERA-related uveitis. Prospective studies will be needed to clarify this situation.

Given the frequently cited assumption that ERA-associated uveitis "typically" presents with acute symptoms (25-27), resembling the course observed in SpA, we were somewhat surprised to find that this was not the case in almost 40% of ERA patients documented here. The occurrence of both SpA and ERA is typically associated with the HLA-B27 allele, which therefore constitutes one of the diagnostic

Downloaded on April 17, 2024 from www.jrheum.org

Accepted Article

criteria. Uveitis in HLA-B27-positive patients (regardless of presence or absence of a systemic disease) is a well-characterized clinical entity, which is typically acutely symptomatic in onset, manifesting with redness, pain, and photophobia(28). As the vast majority (>90% of Caucasians and 60% of Afro-Americans) with SpA are HLA-B27 positive(28), this represents the most predominant uveitis type and was documented in almost 90% of all SpA patients with uveitis in a meta-analysis of 29,877 SpA cases within 126 publications(29). However, the percentage of ERA patients in whom HLA-B27 can be detected varied immensely (45-88%)(5) and only amounted to about 60% in our cohort, which is in line with previous findings(5). Taking into account that the risk for a symptomatic, acute onset of uveitis flares seems to be related to the HLA-B27 allele according to both the data presented here and previous literature(21) and the fact that almost 40% of patients in this study reported insidious uveitis onset suggests that the management of these patients might require some reconsideration. Indeed, the ophthalmological screening schedule for JIA patients currently employed in Germany recommends yearly examinations in ERA(7), assuming that these patients characteristically experience acute symptoms of flare onset, prompting immediate ophthalmological consultation. Meanwhile, the British guidelines suggested a 3- to 4-monthly screening of children diagnosed with ERA(30), similar to what is recommended for patients with other JIA subtypes, for which onset of the vast majority of uveitis cases is insidious (7, 30). Regarding the results from the large cohort in the present study, this approach is probably be more appropriate, especially in children younger than 10 years at ERA onset, as those children had a particularly high risk for developing uveitis in our cohort.

Conclusion

According to the data presented here, ERA-associated uveitis does indeed share some clinical features of the disease course considered to be characteristic for HLA-B27-positive SpA patients, as one might assume due to the many overlapping rheumatologic characteristics of (juvenile) SpA and ERA. However, certain findings resemble those observed in uveitis associated with other JIA subtypes, so that ERA patients may benefit from similar screening schedules. Prospective studies employing both detailed ophthalmological documentation and biomarker monitoring with a focus on ERA patients are required to outline the similarities and differences of the diverse uveitis forms in JIA in order to improve our understanding of pathophysiological concepts and optimize patient management.

Acknowledgements

The authors thank Britta Stratmann and Beatrix Zurek-Imhoff for support with data acquisition.

References

1. Petty RE, Southwood TR, Manners P, Baum J, Glass DN, Goldenberg J, et al. International league of associations for rheumatology classification of juvenile idiopathic arthritis: Second revision, edmonton, 2001. *J Rheumatol* 2004;31:390-2.
2. Flato B, Hoffmann-Vold AM, Reiff A, Forre O, Lien G, Vinje O. Long-term outcome and prognostic factors in enthesitis-related arthritis: A case-control study. *Arthritis Rheum* 2006;54:3573-82.
3. Sieper J, Poddubny D. Axial spondyloarthritis. *Lancet* 2017;390:73-84.
4. Colbert RA. Classification of juvenile spondyloarthritis: Enthesitis-related arthritis and beyond. *Nat Rev Rheumatol* 2010;6:477-85.
5. Gmuca S, Xiao R, Brandon TG, Pagnini I, Wright TB, Beukelman T, et al. Multicenter inception cohort of enthesitis-related arthritis: Variation in disease characteristics and treatment approaches. *Arthritis Res Ther* 2017;19:84.
6. Weiss PF, Klink AJ, Behrens EM, Sherry DD, Finkel TH, Feudtner C, et al. Enthesitis in an inception cohort of enthesitis-related arthritis. *Arthritis Care Res (Hoboken)* 2011;63:1307-12.
7. Heiligenhaus A, Niewerth M, Ganser G, Heinz C, Minden K. Prevalence and complications of uveitis in juvenile idiopathic arthritis in a population-based nation-wide study in germany: Suggested modification of the current screening guidelines. *Rheumatology* 2007;46:1015-9.
8. Moradi A, Amin RM, Thorne JE. The role of gender in juvenile idiopathic arthritis-associated uveitis. *J Ophthalmol* 2014;2014:461078.
9. Verhagen FH, Brouwer AH, Kuiper JJ, Ossewaarde-van Norel J, Ten Dam-van Loon NH, de Boer JH. Potential predictors of poor visual outcome in human leukocyte antigen-b27-associated uveitis. *Am J Ophthalmol* 2016;165:179-87.
10. Dempster H, Porepa M, Young N, Feldman BM. The clinical meaning of functional outcome scores in children with juvenile arthritis. *Arthritis Rheum* 2001;44:1768-74.
11. Consolaro A, Negro G, Chiara Gallo M, Bracciolini G, Ferrari C, Schiappapietra B, et al. Defining criteria for disease activity states in nonsystemic juvenile idiopathic arthritis based on a three-variable juvenile arthritis disease activity score. *Arthritis Care Res (Hoboken)* 2014;66:1703-9.
12. McErlane F, Beresford MW, Baildam EM, Chieng SE, Davidson JE, Foster HE, et al. Validity of a three-variable juvenile arthritis disease activity score in children with new-onset juvenile idiopathic arthritis. *Ann Rheum Dis* 2013;72:1983-8.
13. Jabs DA, Nussenblatt RB, Rosenbaum JT. Standardization of uveitis nomenclature for reporting clinical data. Results of the first international workshop. *Am J Ophthalmol* 2005;140:509-16.
14. Angeles-Han ST, Ringold S, Beukelman T, Lovell D, Cuello CA, Becker ML, et al. 2019 american college of rheumatology/arthritis foundation guideline for the screening, monitoring, and treatment of juvenile idiopathic arthritis-associated uveitis. *Arthritis Care Res (Hoboken)* 2019;71:703-16.
15. Tappeiner C, Klotsche J, Sengler C, Niewerth M, Liedmann I, Walscheid K, et al. Risk factors and biomarkers for the occurrence of uveitis in juvenile idiopathic arthritis: Data from the inception cohort of newly diagnosed patients with juvenile idiopathic arthritis study. *Arthritis Rheumatol* 2018;70:1685-94.
16. Mistry RR, Patro P, Agarwal V, Misra DP. Enthesitis-related arthritis: Current perspectives. *Open Access Rheumatol* 2019;11:19-31.

Downloaded on April 17, 2024 from www.jrheum.org

17. Saurenmann RK, Levin AV, Feldman BM, Rose JB, Laxer RM, Schneider R, et al. Prevalence, risk factors, and outcome of uveitis in juvenile idiopathic arthritis: A long-term followup study. *Arthritis Rheum* 2007;56:647-57.
18. Heiligenhaus A, Heinz C, Edelsten C, Kotaniemi K, Minden K. Review for disease of the year: Epidemiology of juvenile idiopathic arthritis and its associated uveitis: The probable risk factors. *Ocul Immunol Inflamm* 2013;21:180-91.
19. Lee JJY, Duffy CM, Guzman J, Oen K, Barrowman N, Rosenberg AM, et al. Prospective determination of the incidence and risk factors of new-onset uveitis in juvenile idiopathic arthritis: The research in arthritis in canadian children emphasizing outcomes cohort. *Arthritis Care Res (Hoboken)* 2018;71:1436-1443.
20. Kavadiachanda CG, Seth G, Kumar G, Gulati R, Negi VS. Clinical correlates of hla-b*27 and its subtypes in enthesitis-related arthritis variant of juvenile idiopathic arthritis in south indian tamil patients. *Int J Rheum Dis* 2019;22:1289-1296.
21. Rosenbaum JT. Uveitis in spondyloarthritis including psoriatic arthritis, ankylosing spondylitis, and inflammatory bowel disease. *Clin Rheumatol* 2015;34:999-1002.
22. Haasnoot AJ, van Tent-Hoeve M, Wulffraat NM, Schalijs-Delfos NE, Los LI, Armbrust W, et al. Erythrocyte sedimentation rate as baseline predictor for the development of uveitis in children with juvenile idiopathic arthritis. *Am J Ophthalmol* 2015;159:372-7 e1.
23. Kim M, Sim YS, Choi SY, Park YH. Potential predictors for frequent relapse in human leukocyte antigen-b27-associated uveitis. *Graefes Arch Clin Exp Ophthalmol* 2018;256:1543-9.
24. Heiligenhaus A, Klotsche J, Tappeiner C, Sengler C, Niewerth M, Liedmann I, et al. Predictive factors and biomarkers for the 2-year outcome of uveitis in juvenile idiopathic arthritis: Data from the inception cohort of newly diagnosed patients with juvenile idiopathic arthritis (icon-jia) study. *Rheumatology (Oxford)* 2018;58:975-986.
25. Foeldvari I, Walscheid K, Heiligenhaus A. [uveitis in juvenile idiopathic arthritis]. *Z Rheumatol* 2017;76:664-72.
26. Clarke SL, Sen ES, Ramanan AV. Juvenile idiopathic arthritis-associated uveitis. *Pediatr Rheumatol Online J* 2016;14:27.
27. Heiligenhaus A, Minden K, Foll D, Pleyer U. Uveitis in juvenile idiopathic arthritis. *Dtsch Arztebl Int* 2015;112:92-100.
28. Jhaj G, Kopplin LJ. Ocular features of the hla-b27-positive seronegative spondyloarthropathies. *Curr Opin Ophthalmol* 2018;29:552-7.
29. Zeboulon N, Dougados M, Gossec L. Prevalence and characteristics of uveitis in the spondyloarthropathies: A systematic literature review. *Ann Rheum Dis* 2008;67:955-9.
30. Hawkins MJ, Dick AD, Lee RJ, Ramanan AV, Carreno E, Guly CM, et al. Managing juvenile idiopathic arthritis-associated uveitis. *Surv Ophthalmol* 2015;61:197-210.

Figure legends

Figure 1. Age at uveitis onset

A: Arthritis onset in patients with or without uveitis. B: Age at uveitis onset. C: Duration between arthritis and uveitis onset.

ERA enthesitis-related arthritis

Figure 2. Risk of uveitis development in patients with enthesitis-related arthritis

ERA enthesitis-related arthritis

continuous line: risk for uveitis development (mean); dashed lines: confidential interval (95%)

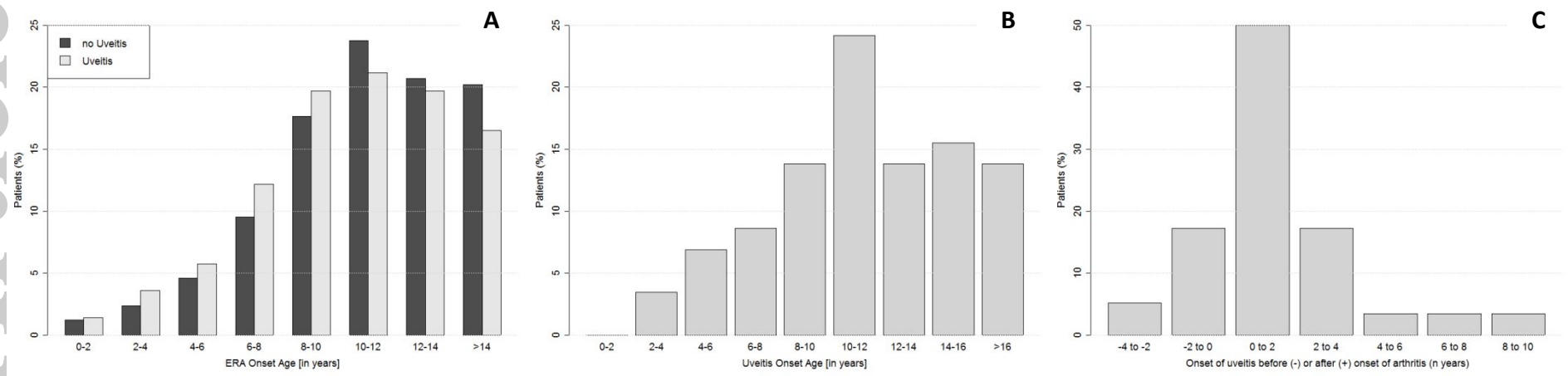


FIGURE 1. AGE AT UVEITIS ONSET

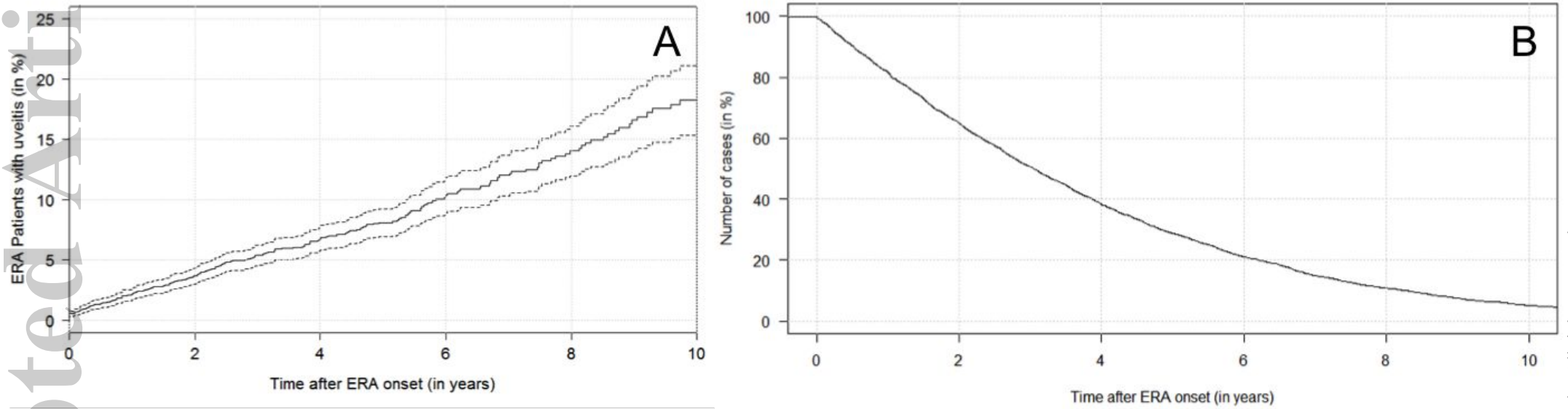


FIGURE 2. RISK OF UVEITIS DEVELOPMENT IN PATIENTS WITH ENTHESITIS-RELATED ARTHRITIS

Group	all patients	ERA*	ERA-U*	p (ERA vs ERA-U)	ERA-U* w/o ERA-UM	ERA-UM*	p (ERA-U w/o ERA-UM vs ERA-UM)	ERA_prosp
n	3778	3498	280		216	64		273
Sex (f/m), in %	36.6 / 63.4	37.2 / 62.8	30.0 / 70.0	0.021	30.6 / 69.4	28.1 / 71.9	0.831	33.0 / 67.0
Age [years]	13.4 ± 3.1	13.4 ± 3.1	13.7 ± 3.4	0.132	14.0 ± 3.4	12.7 ± 3.3	0.033	11.6 ± 2.7
Age at ERA onset [years]	11.0 ± 3.4	11.0 ± 3.4	10.5 ± 3.4	0.022	10.6 ± 3.4	10.1 ± 3.6	0.123	11.1 ± 2.7
Age at Uveitis onset [years]	NA	NA	11.5 ± 3.9	NA	ND	11.5 ± 3.9	ND	NA
ANA pos. % (n**)	24.1% (2842)	24.0% (2636)	24.8% (206)	0.781	22.0% (164)	35.7% (42)	0.051	21.2% (226)
HLA-B27 pos. % (n**)	63.3% (3510)	62.2% (3240)	77.0% (270)	<0.000011	75.6% (209)	82.0% (61)	0.501	70.3% (266)
cJADAS10 (n**)	6.4 ± 4.9 (2091)	6.5 ± 4.9 (1910)	6.1 ± 5.2 (181)	0.322	6.0 ± 5.1 (136)	6.2 ± 5.3 (45)	0.963	7.9 ± 5.5 (160)
CHAQ (n**)	0.3 ± 0.4 (3284)	0.3 ± 0.4 (3037)	0.3 ± 0.5 (247)	0.402	0.3 ± 0.4 (191)	0.3 ± 0.5 (56)	0.923	0.4 ± 0.5 (237)
PGA (NRS Score) (n**)	1.9 ± 1.9 (3686)	1.8 ± 1.9 (3416)	2.0 ± 2.0 (270)	0.142	1.9 ± 1.8 (209)	2.5 ± 2.5 (61)	0.603	2.3 ± 2.1 (266)
ESR [mm/h] (n**)	13.4 ± 15.8 (2565)	13.1 ± 15.6 (2348)	15.8 ± 18.1 (217)	0.042	15.5 ± 17.7 (164)	16.7 ± 19.3 (53)	0.933	19.2 ± 20.3 (198)

Table 1. Characteristics of ERA patients at first documentation in the National Pediatric Rheumatological Database

All values are given as mean ± standard deviation unless otherwise stated. *For definition of groups described here see Material & Methods, statistics section. ** Number of patients who had this item documented.

ERA: Enthesitis-related arthritis; ERA-U: ERA-associated uveitis; ERA-UM uveitis patients with uveitis module; ERA-U w/o ERA-UM patients with ERA-associated uveitis not including those with documentation by uveitis add-on module; ERA_prosp prospectively documented subgroup of ERA patients without uveitis; NA: not applicable; ND: not determined; ANA: antinuclear antibodies; HLA-B27: Human Leukocyte Antigen-B27;

Downloaded on April 17, 2024 from www.jrheum.org

cJADAS10: Juvenile Arthritis Disease Activity Score 10; CHAQ: Childhood Health Assessment Questionnaire; PGA Physician global assessment of disease activity; NRS numerical rating scale; ESR: erythrocyte sedimentation rate

	First documentation	Last documentation	≤0.5 years*	1-2 years*	>3 years*
Visual acuity (logMAR; mean ± SD [n])	0.19±0.33 (62)	0.17±0.32 (62)	0.18±0.33 (60)	0.35±0.60 (15)	0.26 ± 0.32 (7)
Posterior synechiae#	14 / 61 (23.0)	15 / 61 (25)	14 / 59 (23.7)	6 / 15 (40.0)	2 / 8 (25.0)
Cataract	10 / 61 (16.4)	12 / 61 (20.0)	9 / 59 (15.3)	5 / 15 (33.3)	4 / 8 (50.0)
Vitreous opacities	6 / 61 (10.0)	9 / 61 (14.8)	6 / 59 (10.2)	1 / 15 (6.7)	3 / 8 (37.5)
Band keratopathy	4 / 61 (6.6)	4 / 61 (6.6)	4 / 59 (6.8)	2 / 15 (13.3)	2 / 8 (25.0)
Secondary glaucoma	2 / 25 (8.0)	2 / 25 (8.0)	1 / 17 (5.9)	0 / 8 (0.0)	1 / 5 (20.0)
Macular edema	2 / 61 (3.3)	3 / 61 (4.9)	3 / 59 (5.1)	0 / 15 (0.0)	1 / 8 (12.5)
Epiretinal membrane	2 / 25 (8.0)	2 / 25 (8.0)	2 / 17 (11.8)	0 / 8 (0.0)	0 / 5 (0.0)
Hypotony	1 / 61 (1.6)	2 / 61 (3.3)	1 / 59 (1.7)	0 / 15 (0.0)	1 / 8 (12.5)
Papilledema	1 / 61 (1.6)	0 / 61 (0.0)	1 / 59 (1.7)	0 / 15 (0.0)	0 / 8 (0.0)
Amblyopia	1 / 61 (1.6)	2 / 61 (3.3)	1 / 38 (2.6)	0 / 7 (0.0)	1 / 4 (25.0)
Retinal detachment	0 / 61 (0.0)	0 / 61 (0.0)	0 / 59 (0.0)	0 / 15 (0.0)	0 / 8 (0.0)
Phthisis	0 / 61 (0.0)	0 / 61 (0.0)	0 / 59 (0.0)	0 / 15 (0.0)	0 / 8 (0.0)
Rubeosis iridis	0 / 61 (0.0)	0 / 61 (0.0)	0 / 59 (0.0)	0 / 15 (0.0)	0 / 8 (0.0)
Ocular hypertension	0 / 25 (0.0)	0 / 25 (0.0)	0 / 17 (0.0)	0 / 8 (0.0)	0 / 5 (0.0)
Other complications	4 / 61 (6.6)	4 / 61 (6.6)	4 / 59 (6.8)	1 / 15 (6.7)	1 / 8 (12.5)
Any complications	27 / 61 (44.3)	28 / 61 (46.0)	26 / 59 (44.0)	9 / 15 (60.0)	1 / 8 (12.5)

Table 2. Visual acuity and uveitis complications

n: documented patients; * time after initial study documentation; # number of patients with respective complication / number of patients documented (%)

Systemic medication	Initial documentation (n=64)	After uveitis manifestation (n=64)
NSAIDs	41 (64%)	36 (56%)
Systemic corticosteroids		
<0.2mg/kg	6 (9%)	20 (32%)
≥0.2mg/kg	0 (0%)	4 (6%)
steroid pulse therapy	6 (9%)	8 (12%)
Sulfasalazine	17 (27%)	12 (18%)
Methotrexate	47 (73%)	51 (79%)
Azathioprine	0 (0%)	4 (6%)
Cyclosporine A	6 (9%)	4 (6%)
Etanercept	14 (22%)	17 (27%)
Adalimumab	0 (0%)	4 (6%)

Table 3. Systemic medication at initial documentation and after uveitis manifestation

Medications of those patients documented via the add-on uveitis module (ERA-UM group), listed at initial study documentation and at the study documentation following uveitis onset

NSAIDs: non-steroidal anti-inflammatory drugs

group	Uv_sympt	Uv_asympt
n	38	16
Sex (f/m), in %	15.8% / 84.2%	50.0% / 50.0%
Age [years]	13.0 ± 2.7	11.0 ± 3.7
Age at ERA onset [years]	10.7 ± 3.0	7.8 ± 3.8
Age at uveitis onset [years]	12.0 ± 3.4	9.1 ± 4.5
ANA pos. % (n*)	28.6% (28)	75.0% (8)
HLA-B27 pos. % (n*)	88.9% (36)	68.8% (16)
cJADAS10 (n*)	5.7 ± 5.7 (25)	8.3 ± 4.7 (13)
CHAQ (n*)	0.2 ± 0.5 (31)	0.3 ± 0.5 (16)
PGA (NRS Score) (n*)	2.1 ± 2.4 (37)	3.7 ± 2.3 (15)
ESR [mm/h] (n*)	18.8 ± 22.1 (32)	14.9 ± 16.0 (14)

	First documentation		Last documentation		≤0.5 years** (n)		1-2 years** (n)		>3 years** (n)	
	Uv_sympt	Uv_asympt	Uv_sympt	Uv_asympt	Uv_sympt	Uv_asympt	Uv_sympt	Uv_asympt	Uv_sympt	Uv_asympt
Visual acuity (logMAR; mean ± SD [n])	0.19±0.37 (38)	0.18±0.28 (15)	0.17±0.35 (38)	0.15±0.24 (15)	0.18±0.37 (36)	0.18±0.28 (15)	0.34±0.70 (9)	0.44±0.51 (5)	0.28±0.38 (5)	0.20±0.14 (2)
Posterior synechiae#	5 / 37 (13.5)	7 / 16 (43.6)	6 / 37 (16.2)	7 / 16 (43.6)	5 / 35 (14.3)	7 / 16 (43.6)	3 / 9 (33.3)	3 / 5 (0.6)	1 / 6 (16.7)	1 / 2 (50.0)
Cataract	5 / 37 (13.5)	4 / 16 (25)	7 / 37 (18.9)	4 / 16 (25)	4 / 35 (11.4)	4 / 16 (25)	2 / 9 (22.2)	3 / 5 (0.6)	3 / 6 (50.0)	1 / 2 (50.0)
Vitreous opacities	3 / 37 (8.1)	1 / 16 (6.3)	6 / 37 (16.2)	1 / 16 (6.3)	3 / 35 (8.6)	1 / 16 (6.3)	1 / 9 (11.1)	0 / 5 (0.0)	3 / 6 (50.0)	0 / 2 (0.0)
Band keratopathy	1 / 37 (2.7)	2 / 16 (12.5)	2 / 37 (5.4)	1 / 16 (6.3)	1 / 35 (2.9)	2 / 16 (12.5)	1 / 9 (11.1)	1 / 5 (0.2)	2 / 6 (33.3)	0 / 2 (0.0)
Secondary glaucoma	0 / 28 (0.0)	1 / 11 (9.1)	0 / 28 (0.0)	2 / 11 (18.2)	0 / 27 (0.0)	1 / 11 (9.1)	0 / 5 (0.0)	0 / 2 (0.0)	0 / 3 (0.0)	1 / 1 (100.0)
Macular edema	1 / 37 (2.7)	1 / 16 (6.3)	2 / 37 (5.4)	0 / 16 (0.0)	1 / 35 (2.9)	1 / 16 (6.3)	0 / 9 (0.0)	0 / 5 (0.0)	1 / 6 (16.7)	0 / 2 (0.0)
Epiretinal membrane	1 / 15 (6.7)	0 / 6 (0.0)	1 / 15 (6.7)	0 / 6 (0.0)	1 / 8 (12.5)	0 / 5 (0.0)	0 / 4 (0.0)	0 / 3 (0.0)	0 / 4 (0.0)	0 / 1 (0.0)
Hypotony	1 / 37 (2.7)	0 / 16 (0.0)	1 / 37 (2.7)	1 / 16 (6.3)	1 / 35 (2.9)	0 / 16 (0.0)	0 / 9 (0.0)	0 / 5 (0.0)	0 / 6 (0.0)	1 / 2 (50.0)
Papilledema	0 / 37 (0.0)	1 / 16 (6.3)	0 / 37 (0.0)	0 / 6 (0.0)	0 / 35 (0.0)	1 / 16 (6.3)	0 / 9 (0.0)	0 / 5 (0.0)	0 / 6 (0.0)	0 / 2 (0.0)
Amblyopia	1 / 28 (3.6)	0 / 11 (0.0)	2 / 28 (7.1)	0 / 11 (0.0)	1 / 26 (3.8)	0 / 10 (0.0)	0 / 5 (0.0)	0 / 2 (0.0)	1 / 3 (33.3)	0 / 1 (0.0)
Retinal detachment	0 / 37 (0.0)	0 / 16 (0.0)	0 / 37 (0.0)	0 / 16 (0.0)	0 / 35 (0.0)	0 / 16 (0.0)	0 / 9 (0.0)	0 / 5 (0.0)	0 / 6 (0.0)	0 / 2 (0.0)
Phthisis	0 / 37 (0.0)	0 / 16 (0.0)	0 / 37 (0.0)	0 / 16 (0.0)	0 / 35 (0.0)	0 / 16 (0.0)	0 / 9 (0.0)	0 / 5 (0.0)	0 / 6 (0.0)	0 / 2 (0.0)
Rubeosis iridis	0 / 37 (0.0)	0 / 16 (0.0)	0 / 37 (0.0)	0 / 16 (0.0)	0 / 35 (0.0)	0 / 16 (0.0)	0 / 9 (0.0)	0 / 5 (0.0)	0 / 6 (0.0)	0 / 2 (0.0)
Ocular hypertension	0 / 15 (0.0)	0 / 6 (0.0)	0 / 15 (0.0)	0 / 6 (0.0)	0 / 8 (0.0)	0 / 5 (0.0)	0 / 4 (0.0)	0 / 3 (0.0)	0 / 4 (0.0)	0 / 1 (0.0)
Other complications	1 / 37 (2.7)	1 / 16 (6.3)	1 / 37 (2.7)	1 / 16 (6.3)	1 / 35 (2.9)	1 / 16 (6.3)	0 / 9 (0.0)	1 / 5 (0.2)	1 / 6 (16.7)	0 / 2 (0.0)
Any complications	14 / 37 (37.8)	9 / 16 (56.3)	15 / 37 (40.5)	9 / 16 (56.3)	17 / 35 (48.6)	9 / 16 (56.3)	3 / 9 (33.3)	3 / 5 (0.6)	5 / 6 (83.3)	2 / 2 (100.0)

Table 4. Characteristics of uveitis patients with symptomatic and asymptomatic onset of flare

Patients with symptomatic (Uv_sympt) and asymptomatic (Uv_asympt) uveitis onset documented with the uveitis module. Demographic and laboratory patient characteristics result from the first documentation in the National Pediatric Rheumatology Database, whereas ocular characteristics results from the uveitis module-documentation at the intervals stated above. All values are given as mean \pm standard deviation unless otherwise stated.

* Number of patients who had this item documented. ** time after initial study documentation; # number of patients with respective complication / number of patients documented (%)

ERA: Enthesitis-related arthritis; ANA: antinuclear antibodies; HLA-B27: Human Leukocyte Antigen-B27; cJADAS10: Juvenile Arthritis Disease Activity Score 10; CHAQ: Childhood Health Assessment Questionnaire; PGA Physician global assessment of disease activity; NRS numerical rating scale; ESR: erythrocyte sedimentation rate