

Longterm Safety and Efficacy of Tocilizumab in Patients with Rheumatoid Arthritis: A Cumulative Analysis of Up to 4.6 Years of Exposure

MARK C. GENOVESE, ANDREA RUBBERT-ROTH, JOSEF S. SMOLEN, JOEL KREMER, MAJED KHRAISHI, JUAN GÓMEZ-REINO, ANTHONY SEBBA, ROBERT PILSON, SARAH WILLIAMS, and RONALD van VOLLENHOVEN

ABSTRACT. Objective. To assess the longterm safety and efficacy of tocilizumab (TCZ) in patients with moderate to severe rheumatoid arthritis (RA).

Methods. Patient data were from 5 randomized controlled TCZ trials (n = 4211), their open-label extension phases (n = 3512), and a drug interaction study (n = 23). All randomly assigned patients, regardless of previous RA treatment, were analyzed. Measures of safety included number of adverse events (AE), serious AE (SAE), AE leading to treatment discontinuation, laboratory tests, and deaths. Efficacy measures included American College of Rheumatology (ACR) 20/50/70 responses, tender joint count (TJC), swollen joint count (SJC), ACR core set components, and low disease activity (LDA) or Disease Activity Score in 28 joints (DAS28) remission. ACR/European League Against Rheumatism (EULAR) disease remission was a posthoc exploratory analysis.

Results. Total duration of observation was 12,293 patient-years (PY). No new safety signals were identified; infections were the most common AE and SAE. The rate of serious infections was 4.5/100 PY. Improvements from baseline in clinical efficacy, measured as ACR20/50/70 responses, TJC, SJC, ACR core set components, and LDA and DAS28 remission, were generally sustained through at least 216 weeks of followup. ACR/EULAR disease remission was attained by 16.5% (Boolean) and 22.7% (index) of patients at Week 216.

Conclusion. TCZ has to date been studied for up to 4.6 years (240 weeks) of treatment in patients with RA. Our analysis reveals a longer-term safety profile consistent with previous observations, no new safety signals, and durable efficacy of TCZ in a large clinical trial program. (J Rheumatol First Release March 1 2013; doi:10.3899/jrheum.120687)

Key Indexing Terms:

TOCILIZUMAB TREATMENT EFFICACY SAFETY RHEUMATOID ARTHRITIS

Rheumatoid arthritis (RA) is an inflammatory disease characterized by progressive joint damage, functional impairment, and reduced health-related quality of

life^{1,2,3,4,5}. Tocilizumab (TCZ) is a humanized monoclonal antibody that inhibits interleukin 6 (IL-6) binding to soluble and membrane-expressed receptors and blocks IL-6

From the Division of Rheumatology, Stanford University Medical Center, Palo Alto, California, USA; Department of Internal Medicine, University of Cologne, Cologne, Germany; Division of Rheumatology, Department of Medicine III, Medical University of Vienna, Vienna, Austria; Center for Rheumatology, Albany Medical College, State University of New York, Albany, New York, USA; Memorial University of Newfoundland, St. John's, Newfoundland and Labrador, Canada; Rheumatology Unit Hospital, Clinical Universitario, Santiago, Spain; Department of Rheumatology, University of South Florida, Palm Harbor, Florida, USA; Hoffmann-La Roche Inc., Nutley, New Jersey, USA; PDBB-Biostatistics, Roche Products Limited, Welwyn Garden City, UK; and Rheumatology Unit, Department of Medicine, Karolinska University Hospital in Solna, Stockholm, Sweden.

Funding for manuscript preparation was provided by F. Hoffmann-La Roche Ltd. Dr. Genovese has received grant support and consulting revenue from Roche. Dr. Rubbert-Roth has received grant support from and has served on the speakers bureau for Roche. Dr. Smolen has received grant support and consulting revenue from and has served on the speakers bureau for Roche. Dr. Kremer has received grant support and consulting revenue from and has served on the speakers bureau for Genentech, a member of the Roche group. Dr. Khraishi has received grant support from Roche Canada and has served on the speakers bureau for Roche. Dr. Gomez-Reino has received research grant support and consulting revenue from Roche. Dr. Sebba has received consulting revenue from and has served on the speakers bureau for Genentech, a member of the Roche

group. Dr. Pilson was an employee of Hoffmann-La Roche Inc. Ms. Williams is an employee of Roche Products Ltd. Dr. van Vollenhoven has received grant support, consulting revenue, and honoraria from Roche.

M.C. Genovese, MD, Professor, Division of Rheumatology, Stanford University Medical Center; A. Rubbert-Roth, PhD, Professor, Department of Internal Medicine, University of Cologne; J.S. Smolen, MD, Professor, Division of Rheumatology, Department of Medicine III, Medical University of Vienna; J. Kremer, MD, Professor, Center for Rheumatology, Albany Medical College, State University of New York; M. Khraishi, MBBCh, FRCPC, Clinical Professor of Medicine (Rheumatology), Co-chair Human Investigation Committee, Memorial University of Newfoundland; J. Gómez-Reino, MD, Professor of Medicine, Head, Rheumatology Unit, Hospital Clínico Universitario; A. Sebba, MD, Assistant Clinical Professor, Department of Rheumatology, University of South Florida; R. Pilson, MS, Clinical Science Associate, Product Development, Immunology, Hoffmann-La Roche Inc.; S. Williams, MSc, Senior Statistical Scientist, PDBB-Biostatistics, Roche Products Limited; R. van Vollenhoven, MD, PhD, Senior Physician, Associate Professor, Rheumatology Unit, Department of Medicine, Karolinska University Hospital in Solna.

Address correspondence to Prof. M.C. Genovese, Division of Rheumatology, Stanford University Medical Center, Palo Alto, CA 94304, USA. E-mail: Genovese@stanford.edu

Accepted for publication December 11, 2012.

Personal non-commercial use only. The Journal of Rheumatology Copyright © 2013. All rights reserved.

receptor signaling⁶. Five international, phase III, randomized, placebo-controlled clinical trials (RCT) of 24 weeks^{7,8,9,10} and 52 weeks¹¹ duration showed evidence that TCZ, given as monotherapy or in combination with methotrexate (MTX) or other disease-modifying antirheumatic drugs (DMARD), reduces signs and symptoms of RA, inhibits radiographic progression, and improves patient function. These studies demonstrated a consistent safety profile for TCZ across different patient populations, including patients who had not been exposed or had inadequate responses to MTX treatment¹⁰ and patients who had inadequate responses to tumor necrosis factor inhibitors (TNF-IR)⁹ or DMARD (DMARD-IR)^{7,8,11}.

Assessment of the longterm safety and efficacy of TCZ increases the body of information available about the drug. A 5-year open-label extension of a 3-month, double-blind RCT showed evidence of the longterm safety and efficacy of TCZ monotherapy in Japanese DMARD-IR patients¹². Most recently, Schiff, *et al*¹³ conducted an integrated safety analysis of TCZ therapy from the 5 phase III clinical trials^{7,8,9,10,11} and their open-label extensions. In that analysis, the mean duration of treatment was 2.4 years, and the duration of observation was 9414 patient-years (PY)¹³. Results showed that the safety profile of TCZ over 2.4 years was consistent with that observed in the phase III studies.

We present evidence of the longterm safety and efficacy of TCZ in patients with moderate to severe RA, based on an analysis that includes 12,293 PY of observation. To our knowledge, this is the first report to assess the longterm safety and efficacy of TCZ in patients outside Japan.

MATERIALS AND METHODS

Patient data sources. Patient data were pooled from 5 phase III RCT [OPTION (in MTX-IR)⁷, TOWARD (in DMARD-IR)⁸, RADIATE (in anti-TNF-IR)⁹, AMBITION (TCZ monotherapy study in patients who were MTX-naïve or who had not previously failed MTX)¹⁰, and LITHE (structural damage/radiographic study in MTX inadequate responders)¹¹], their ongoing extension trials (GROWTH95, GROWTH96, and the open-label extension phase of LITHE), and an open-label, randomized, drug interaction study¹⁴ (Table 1).

TCZ treatment. In the 5 TCZ RCT, patients were initially randomly assigned to receive placebo or intravenous TCZ (4 or 8 mg/kg) alone or in combination with MTX/DMARD.

The drug interaction study consisted of patients (n = 23) who received a single dose of TCZ 10 mg/kg and were assessed for safety but not for efficacy.

On entering the open-label extension trials, all patients received 8 mg/kg TCZ. Investigators were permitted to modify the dose of TCZ (e.g., to reduce temporarily to 4 mg/kg or skip doses entirely) as clinically required for safety reasons according to the clinical trial protocols. Baseline was defined as the first time a patient received TCZ as initial or rescue therapy. Baselines were staggered, and the numbers of patients with assessments decreased over time because some patients had not yet reached later assessments or had withdrawn from the study.

Safety populations. Safety was evaluated in 2 patient populations — the all-control population and the all-exposed population. In total, 4211 patients were randomly assigned to TCZ or placebo in the 5 RCT^{7,8,9,10,11}. The all-control population included data from the double-blind treatment

phases of each of the 5 RCT studies^{7,8,9,10,11}, from randomization until the first change in treatment (on initiation of rescue therapy or entry into an open-label extension), or until 2 years' study duration (LITHE) was reached. Data for the all-control population are presented by initially randomized treatment group. The all-exposed population included all patients who received at least 1 dose of TCZ from their first dose (in 1 of the 5 RCT as initial therapy or rescue therapy, in an open-label extension study, or in the drug interaction study) to the cutoff date of February 17, 2010.

Efficacy populations. The efficacy population comprised all patients who received at least 1 dose of TCZ in the 5 RCT and/or in the open-label extensions until the cutoff date of February 17, 2010. Patients from the drug interaction study were excluded. Data for patients who received TCZ (4 or 8 mg/kg) were pooled into a single TCZ group. Efficacy analyses summarize outcomes for each of 3 patient populations who entered open-label extensions: (1) the never-exposed (NE) or never-failed (NF) MTX (NE/NF MTX) group included patients with active RA who were initially enrolled in AMBITION. These patients were naïve to biologic therapy and MTX (or had not received MTX within 6 months before study start) and had never discontinued MTX because of adverse events (AE) or lack of efficacy; (2) the DMARD-IR group included patients initially enrolled in OPTION, TOWARD, and LITHE; and (3) the TNF-IR group included patients initially enrolled in RADIATE.

Assessments. The extent of TCZ exposure was calculated by assigning 28 days to each infusion received. Total duration of observation was defined as the time from the first TCZ dose to the last safety observation, regardless of whether this observation was reported within 28 days of the last TCZ dose, and was the denominator for patient-adjusted AE rates.

Safety and laboratory assessments. Measures of safety, including AE, serious AE (SAE), AE leading to treatment discontinuation or dose modification, and deaths, were recorded. AE and SAE per system organ class and rates of death were expressed per 100 PY and were calculated overall and in 12-month periods for the all-exposed population and by treatment group for the all-control population. AE by intensity, serious infectious events, and AE leading to dose modification or withdrawal were also recorded. Multiple occurrences of the same AE in a patient were counted once for that patient. Rates of withdrawal from treatment for safety reasons and nonsafety reasons were recorded for the all-exposed safety population. Neutrophil and platelet counts, hepatic transaminases [alanine aminotransferase (ALT) and aspartate aminotransferase (AST)], and lipid levels were monitored by routine laboratory tests performed at scheduled visits.

Efficacy assessments. Planned efficacy assessments included American College of Rheumatology (ACR) 20/50/70 responses; summary of swollen joint count (SJC) and tender joint count (TJC) by visit; low disease activity (LDA), defined as Disease Activity Score in 28 joints (DAS28) \leq 3.2; DAS28 remission [DAS28 < 2.6; calculated with erythrocyte sedimentation rate (ESR)]; Health Assessment Questionnaire–Disability Index (HAQ-DI) categorical change from baseline (improved, \leq -0.5; unchanged, $>$ -0.5 to $<$ 0.5; or worsened, \geq 0.5); and withdrawal reasons by 48-week periods. Posthoc exploratory analyses included disease remission according to the 2011 ACR/European League Against Rheumatism (EULAR) Boolean-based definition [i.e., scores for TJC, SJC, C-reactive protein (CRP, mg/dl), and Patient Global Assessment of Disease Activity score (0–10 scale, all \leq 1)] and the index-based definition [Simplified Disease Activity Index (SDAI) \leq 3.3] at various timepoints¹⁵, ACR20 responders at Week 12 who then achieved ACR50/70 response over time, and patients who had LDA at Week 12 and achieved DAS28 remission over time.

Timing of assessments. Safety was monitored throughout the trials. Efficacy assessments occurred every 4 weeks in OPTION, TOWARD, RADIATE, and AMBITION and in years 1 and 2 of LITHE, every 8 weeks in years 3 to 5 of LITHE^{7,8,9,10,11}, and every 12 weeks in the open-label extensions until the cutoff date. Data for summaries were assigned to the nearest 12-week timepoint for pooling. Sufficient data [i.e., \geq 10% of the number of patients (n) originally included in each group at baseline (N)] were

Table 1. Study design and treatment features of tocilizumab phase III randomized controlled trials and open-label extensions.

Study	Patient Population	Treatment Duration	Treatment	Combination Therapy	Rescue Therapy ^a	Efficacy Population*, n = 3986	All-exposed Safety Population*, n = 4009	All-control Safety Population**, n = 4199 ^b
Randomized Controlled Studies								
LITHE N = 1196 ^c	Moderate to severe active RA MTX-IR	2 yrs	TCZ 4 mg/kg Q4W TCZ 8 mg/kg Q4W ^e Placebo Q4W	MTX 10–25 mg QW	Wk 16: blinded TCZ 4 mg/kg (from placebo) or 8 mg/kg (from 4 mg/kg) After 12 wks of escape 1 treatment: TCZ 8 mg/kg Wk 16: TCZ 8 mg/kg	DMARD-IR group: n = 1149	n = 1149 initially randomly assigned to: Control: n = 351 TCZ 4 mg/kg: n = 399 TCZ 8 mg/kg: n = 399	Control: n = 392 TCZ 4 mg/kg: n = 399 TCZ 8 mg/kg: n = 399
OPTION N = 623 ^c	Moderate to severe active RA MTX-IR	24 wks	TCZ 4 mg/kg Q4W TCZ 8 mg/kg Q4W Placebo Q4W	MTX 10–25 mg QW	Wk 16: TCZ 8 mg/kg	DMARD-IR group: n = 597	n = 597 initially randomly assigned to: Control: n = 179 TCZ 4 mg/kg: n = 212 TCZ 8 mg/kg: n = 206	Control: n = 204 TCZ 4 mg/kg: n = 212 TCZ 8 mg/kg: n = 206
TOWARD N = 1220 ^c	Moderate to severe active RA	24 wks	TCZ 8 mg/kg Q4W Placebo Q4W (randomized 2:1)	DMARD	Wk 16: adjustment of background DMARD	DMARD-IR group: n = 1158	n = 1158 initially randomly assigned to: Control: n = 356 TCZ 8 mg/kg: n = 802	Control: n = 414 TCZ 8 mg/kg: n = 802
RADIATE N = 499 ^c	Moderate to severe active RA TNF-IR	24 wks	TCZ 4 mg/kg Q4W TCZ 8 mg/kg Q4W Placebo Q4W	MTX 10–25 mg QW	Wk 16: TCZ 8 mg/kg	TNF-IR group: n = 464	n = 464 initially randomly assigned to: Control: n = 126 TCZ 4 mg/kg: n = 163 TCZ 8 mg/kg: n = 175	Control: n = 160 TCZ 4 mg/kg: n = 163 TCZ 8 mg/kg: n = 175
AMBITION N = 673 ^c	Active RA No MTX during last 6 mo and no MTX failure	24 wks	TCZ 8 mg/kg Q4W ^f MTX 7.5–20 mg weekly Substudy: placebo 8 wks then TCZ 8 mg/kg Q4W for 16 wks	None	Substudy only up to wk 8: TCZ 8 mg/kg	NE/NF MTX group: n = 618	n = 618 initially randomly assigned to: Control: n = 330 TCZ 8 mg/kg: n = 288	Control: n = 385 ^g TCZ 8 mg/kg: n = 288
Phase 1 Drug Interaction N = 23	RA patients	Single dose	TCZ 10 mg/kg TCZ 10 mg/kg + simvastatin on days 1, 15, and 43	MTX 10–25 mg QW	NA	NA	n = 23 initially randomly assigned to: TCZ 10 mg/kg: n = 23	NA
Longterm Extension, Open-label Studies								
LITHE extension phase N = 909 ^d	Ongoing study; moderate to severe active RA MTX-IR	3 yrs (planned)	TCZ 8 mg/kg Q4W	MTX 10–25 mg/wk	NA	NA	909	NA
GROWTH95 N = 537	Patients completing treatment in OPTION	–5 yrs (planned)	TCZ 8 mg/kg Q4W	MTX 10–25 mg/wk	NA	NA	537	NA
GROWTH96 N = 2066	Patients completing treatment in AMBITION, RADIATE, TOWARD, and drug interaction study	–5 yrs (planned)	TCZ 8 mg/kg Q4W	Study dependent None (AMBITION ^f) MTX, 10–25 mg/wk (RADIATE) Other DMARD (TOWARD)	NA	NA	2066	NA

Personal non-commercial use only. The Journal of Rheumatology Copyright © 2013. All rights reserved.

* TCZ-treated patients (from controlled and extension studies). ** TCZ- or control-treated (from controlled studies). ^a Patients who did not attain 20% improvement in swollen joint count (SJC) or tender joint count (TJC) could receive rescue therapy during the randomized phase. ^b Does not include 23 patients from the phase I clinical pharmacology study and 12 patients initially randomly assigned in the randomized controlled studies who did not receive study treatment: LITHE (n = 6), OPTION (n = 1), TOWARD (n = 4), and RADIATE (n = 1). ^c No. patients randomly assigned during phase III study. ^d Estimated no. patients who entered extension phase (study is ongoing; final data not available). ^e At Week 52, all patients were required to start open-label TCZ 8 mg/kg for Year 2 unless they had attained $\geq 70\%$ improvement in SJC and TJC, allowing them to continue the blinded therapy they were receiving at the end of Year 1 to Week 104. ^f Patients who attained $\geq 50\%$ reduction in TJC and SJC (assessed from baseline) while receiving initially randomized study treatment at weeks 20 and 24 could opt to continue their current blinded treatment in a transition phase that lasted until the last patient enrolled in AMBITION completed the 24-week randomized phase of the study; 234 AMBITION patients continued to receive TCZ 8 mg/kg monotherapy for all evaluations. ^g 284 patients from blinded study; 101 patients from placebo substudy. DMARD: disease-modifying antirheumatic drug; IR: inadequate response; MTX: methotrexate; NA: not applicable; NE/NF: never exposed/never failed; QW: once every week; Q4W: once every 4 weeks; RA: rheumatoid arthritis; SJC: swollen joint count; TCZ: tocilizumab; TJC: tender joint count; TNF: tumor necrosis factor.

available to provide assessments up to Week 240 (~4.6 years) for the DMARD-IR group and up to Week 216 for the NE/NF MTX and TNF-IR groups.

Statistical analyses and handling of missing data. All outcomes were summarized descriptively. Efficacy data were included in the analyses when sufficient data (defined above) were available. Efficacy analyses were based on available patient assessments at each timepoint. The number of patients with data available for each assessment at each timepoint decreased over time because some patients had not yet reached that point in their treatment or had withdrawn from the study.

The last observation carried forward method was used for TJC and SJC calculations. No imputation was used for missing HAQ-DI score, CRP, ESR, or visual analog scale (VAS) assessments. CRP was used primarily for calculation of ACR response; if missing, ESR was used. For DAS28 remission calculations, no substitute was used for a missing ESR value.

RESULTS

Patient populations. In total, 4211 patients were enrolled in the 5 RCT, and 23 patients were enrolled in the drug interaction study. Twelve patients did not receive any randomized study treatment. Among the 4199 patients in the all-control population, 1555 were initially randomly assigned to a control group (placebo \pm MTX or placebo \pm other DMARD), 774 were initially randomly assigned to 4 mg/kg TCZ + DMARD, and 1870 were initially randomly assigned to 8 mg/kg TCZ + DMARD. Corresponding durations of observation at the data cutoff date were 824.6 PY, 564.5 PY, and 1194.1 PY, respectively. Of these, 3512 patients participated in the corresponding open-label extensions (Table 1).

The all-exposed population included 4009 patients who received at least 1 TCZ dose. At the data cutoff date, mean duration of TCZ treatment was 3.07 years (up to 4.6 years); total duration of observation was 12,293 PY.

Among the 3986 patients in the efficacy population, 1342 were initially randomly assigned to the control group (placebo \pm MTX or placebo \pm other DMARD), 774 were initially randomly assigned to 4 mg/kg TCZ, and 1870 were initially randomly assigned to 8 mg/kg TCZ. In total, 684 of 3986 patients received rescue therapy (TCZ 4 or 8 mg/kg). Of these 684 patients, 386, 166, and 132 were initially randomly assigned to placebo, 4 mg/kg TCZ, and 8 mg/kg TCZ, respectively. Only the LITHE study allowed stepwise

rescue therapy (i.e., 4 mg/kg TCZ, then 8 mg/kg TCZ) for patients initially randomly assigned to placebo; consequently, 30 patients initially randomly assigned to placebo received stepwise rescue therapy. Within the efficacy population, the NE/NF MTX group comprised 618 patients. The DMARD-IR group comprised 2904 patients, and the TNF-IR group comprised 464 patients.

Safety outcomes: rates of withdrawal. In the all-control population, rates of withdrawal attributed to AE were 6.9/100 PY in the control group, 10.1/100 PY in the 4 mg/kg TCZ group, and 10.2/100 PY in the 8 mg/kg TCZ group (Table 2). A Kaplan-Meier plot over time is shown in Figure 1. In the all-exposed population, the overall rate of withdrawal attributed to AE was 5.2/100 PY, with most withdrawals occurring during the first 12 months (9.2/100 PY; Table 2). The most common AE leading to withdrawal in the first 12 months were liver function test abnormalities at a rate of 2.4/100 PY. Overall, more patients withdrew from treatment for safety reasons (16%) than because of insufficient therapeutic response (4.3%). The proportion of patients who withdrew from treatment because of safety (AE or death) or nonsafety reasons (i.e., insufficient therapeutic response, refused treatment, did not cooperate, withdrew consent, failure to return, administrative/other, entry selection criteria violation, or other violations) was higher during the first 48 weeks (6.8% and 6.4%, respectively) than during Weeks 49 to 96 (3.9% and 4.0), during Weeks 97 to 144 (2.6% and 2.5%), and past Week 144 (2.8% and 2.1%).

Rates of AE. Overall rates of AE were similar among the 3 treatment groups in the all-control population (339.0 to 381.6/100 PY) and during the first 12 months of treatment in the all-exposed population (379.4/100 PY; Table 2). Rates of SAE were also similar between active and control groups (13.6 to 14.5/100 PY) and during the first 12 months of treatment in the all-exposed population (15.5/100 PY). In the all-exposed population, rates of AE and SAE were highest during the first 12 months of treatment and declined thereafter.

Infection rates. In the all-exposed population, the rate of

Table 2. Adverse events (AE; safety population).

	All-control Population, n = 4199				All-exposed Population (cutoff date: Feb. 17, 2010), n = 4009			
	Control, n = 1555	TCZ 4 mg/kg + DMARD/MTX, n = 774	TCZ 8 mg/kg ± DMARD/MTX, n = 1870	Overall	0–12 Mo	13–24 Mo	25–36 Mo	> 36 Mo
Total duration, PY	824.6	564.6	1194.1	12293.1	3470.9	3026.1	2732.7	3063.5
AE, rate/100 PY								
Any ^a	339.0	358.0	381.6	257.2	379.4	275.8	252.4	224.5
Severe ^{a,b}	—	—	—	16.8	22.2	16.7	15.8	12.9
Led to withdrawal ^a	6.9	10.1	10.2	5.2	9.2	4.4	3.8	2.9
Led to dose modification/ interruption ^a	27.8	32.9	34.2	36.0	40.3	38.5	38.7	36.8
Serious AE, rate/100 PY								
Any ^a	14.4	13.6	14.5	14.1	15.5	13.4	14.8	13.6
Death rate/100 PY	0.73	0.00	0.75	0.45	0.55	0.33	0.44	0.29
AE with rate ≥ 2/100 PY by SOC ^a								
Infections and infestations	87.9	93.9	93.4	68.7	96.7	83.8	80.8	73.7
Gastrointestinal disorders	55.3	47.3	56.8	32.7	55.0	32.8	29.3	23.9
Musculoskeletal and connective tissue disorders	38.8	30.3	29.1	27.5	34.7	31.1	27.8	25.2
Nervous system disorders	20.5	21.4	24.0	12.8	22.4	13.0	10.6	8.9
Skin and subcutaneous disorders	19.6	29.4	31.7	15.6	27.3	14.5	12.0	10.8
General disorders and administrative site conditions	18.2	17.5	18.0	9.2	16.2	8.3	7.6	5.2
Respiratory, thoracic, and mediastinal disorders	14.8	18.4	17.5	11.8	17.1	12.3	11.0	10.1
Injury, poisoning, and procedural complications	13.9	15.8	15.8	14.5	16.9	15.1	14.3	13.7
Investigations	12.4	17.5	25.0	10.8	20.9	9.8	8.2	6.2
Vascular disorders	10.3	14.2	12.4	8.4	13.3	8.8	7.8	6.2
Psychiatric disorders	7.9	8.3	8.3	5.4	8.2	5.5	5.5	3.4
Metabolism and nutrition disorders	6.3	7.4	7.1	7.3	8.9	8.4	6.1	7.5
Blood and lymphatic disorders	5.3	5.7	7.3	5.2	7.4	4.6	5.4	5.5
Eye disorders	5.0	6.4	8.2	6.1	7.9	6.3	6.0	5.2
Renal and urinary disorders	4.0	2.7	4.1	2.9	3.6	2.8	2.7	2.8
Reproductive and breast disorders	4.4	4.3	5.3	3.4	4.6	3.4	2.9	3.0
Cardiac disorders	3.5	2.7	4.0	4.1	4.5	4.5	3.8	4.0
Ear and labyrinth disorders	3.3	3.9	2.9	2.3	3.1	2.7	2.2	1.6
Neoplasms benign, malignant, unspecified (including cysts and polyps)	1.7	5.1	2.6	3.1	3.5	2.9	3.4	3.0
Immune disorders	1.9	1.8	2.4	1.6	2.3	1.8	1.6	1.0
Hepatobiliary disorders	1.7	1.1	2.8	1.8	2.2	1.5	1.9	2.0
SAE with rate ≥ 1/100 PY by SOC ^a								
Infections and infestations	3.3	3.5	4.8	4.4	4.4	3.8	5.0	4.7
Gastrointestinal disorders	1.0	0.9	1.7	1.2	1.5	1.0	1.1	1.2
Musculoskeletal and connective tissue disorders	1.8	1.2	0.6	0.9	1.0	1.0	0.9	0.8
Nervous system disorders	0.7	1.4	0.8	0.8	1.0	0.8	0.7	0.7
Injury, poisoning, and procedural complications	1.1	1.1	1.8	1.2	1.4	1.5	1.0	1.0
Cardiac disorders	1.1	0.4	1.1	1.0	1.0	1.0	1.1	1.0
Neoplasms, benign, malignant, unspecified (including cysts and polyps)	0.8	1.8	0.5	1.2	1.0	1.0	1.4	1.3

^a Multiple occurrences of the same AE in a patient are counted once in each period. ^b Intensity of AE graded by the investigator as mild, moderate, or severe. PY: patient-years; SAE: serious adverse event; SOC: system organ class; TCZ: tocilizumab; DMARD: disease-modifying antirheumatic drug; MTX: methotrexate.

serious infection was 4.5/100 PY. Pneumonia (0.7/100 PY) and cellulitis (0.5/100 PY) were the most commonly reported. Serious infection rates appeared stable over time.

Nine cases of SAE opportunistic infections, excluding tuberculosis (TB), were reported. Eight of these 9 were previously described by Schiff, *et al*¹³. These 9 cases were

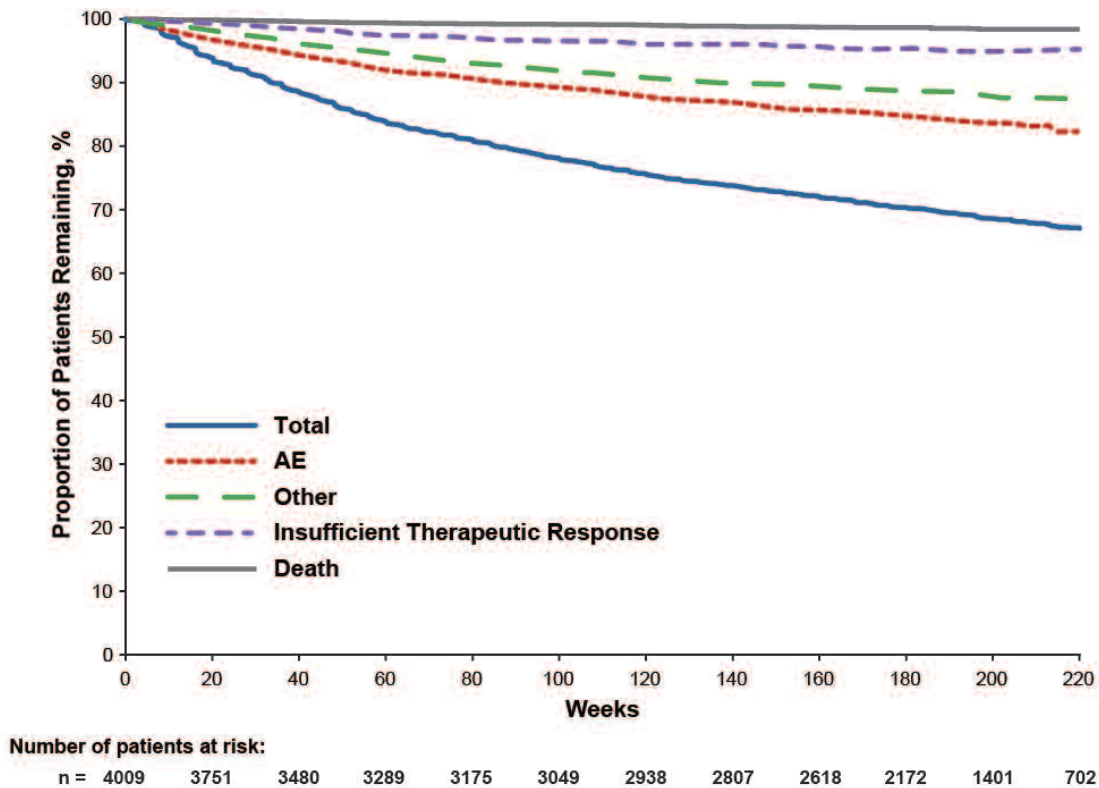


Figure 1. Kaplan-Meier plot of patient withdrawal by withdrawal reason (all-exposure population). AE: adverse event.

candidiasis (2 cases of systemic and 1 case of osteomyelitis), fungal sinusitis (1 case), non-TB mycobacterial infection (1 case), and 1 case each of *Pneumocystis jirovecii* pneumonia, cryptococcal pneumonia, *Alcaligenes* infection, and coccidioidomycosis (localized, nondisseminated). Of these 9, there were 3 deaths, all in the patients with candidiasis.

Patients were screened for TB per the local standard of care. Patients with active TB were excluded, but those with latent TB received standard of care prophylaxis and could enter the study. Nine patients developed TB, for a rate of 0.1/100 PY. All TB cases except 1 appeared to be *de novo*; in that 1 case, a patient from Spain was treated for latent TB on study entry and developed pulmonary TB at Week 96. The patient was subsequently treated with anti-TB medication and improved. Of the patients who developed TB, 6 were taking concomitant corticosteroids; diagnoses of TB were made at variable times (range 39–202 weeks) from the start of TCZ treatment.

Cardiovascular and gastrointestinal perforation events. The rate of myocardial infarction was 0.29/100 PY, the rate of stroke was 0.16/100 PY, and the rate of gastrointestinal perforation was 0.2/100 PY. These rates are similar to those previously described¹³. There was no evidence of increased rates compared with those observed in epidemiologic studies of patients with RA^{16,17,18,19}.

Malignancies. The overall rate of SAE malignancies was 1.2/100 PY. The most frequently reported were basal cell carcinoma at a rate of 0.1/100 PY (9 events), uterine leiomyoma at a rate of 0.1/100 PY (8 events), and breast cancer and prostate cancer (6 events each). The pattern of malignancies was as expected in the population studied, and rates were similar to those previously described¹³. For the subset of patients in the United States, standardized incidence rates (SIR) for malignancies were calculated using the US Surveillance and Epidemiology End Results 2000 rates for the general population as a reference. The SIR for malignancy was 1.050 (95% CI 1.011–1.091), similar to that expected for the general population.

Hepatic events. Three cases of SAE hepatic disorders were reported: autoimmune hepatitis, hepatic steatosis, and ischemic hepatitis (1 each). The cases of autoimmune hepatitis and hepatic steatosis were not clearly related to TCZ; ischemic hepatitis occurred with an elevation of transaminase levels in a patient with anaphylaxis. Transaminase elevations are described below. To date, the elevations in transaminase levels seen with TCZ have not resulted in an increased rate of clinically relevant liver injury.

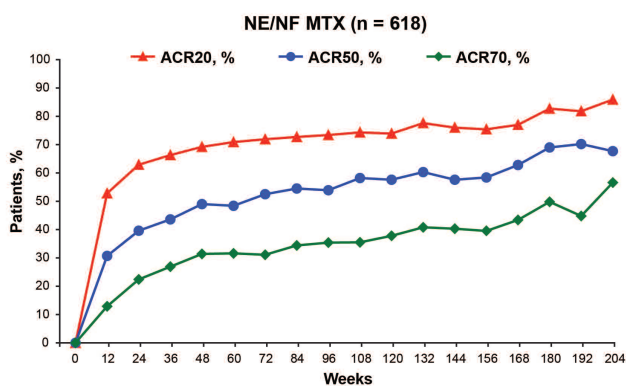
Deaths. In the all-control population, rates of death were 0.73/100 PY in the control group, 0 in the 4 mg/kg TCZ group, and 0.75 in the 8 mg/kg TCZ group (Table 2). In the all-exposed population overall, 55 deaths (0.45/100 PY)

occurred ≤ 84 days after the last dose. The most frequent causes of death in the all-exposed population were serious infection (n = 18), cardiac events (n = 12), malignancy (n = 6), and respiratory events (n = 5).

Laboratory measures. Laboratory measures for the all-control population were described previously¹³. In the all-exposed population, the mean neutrophil count was $5.8 \times 10^9/l$ at baseline and decreased by about $2.0 \times 10^9/l$ after the first infusion of TCZ; no systematic change was noted thereafter. Common toxicity criteria (CTC) for grade 3 neutropenia [absolute neutrophil count (ANC) 0.5 to $< 1.0 \times 10^9/l$] occurred in 192 of 4002 observed patients (4.8%), and CTC grade 4 neutropenia (ANC $< 0.5 \times 10^9/l$) occurred in 30 of 4002 patients ($< 1\%$). As described by Schiff, *et al*¹³, 1 patient experienced a serious infection of empyema temporally associated with grade 3 neutropenia. None of the patients with grade 4 neutropenia experienced serious

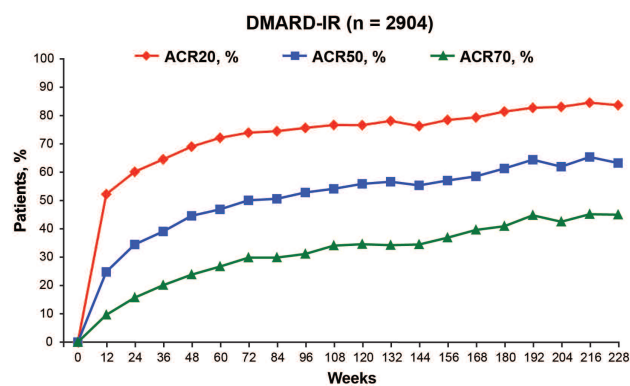
infection within 30 days of observed neutropenia. Fifteen patients ($< 1\%$) had grade 3 thrombocytopenia (≥ 25 to $< 50 \times 10^9/l$), and 14 patients ($< 1\%$) had grade 4 thrombocytopenia ($< 25 \times 10^9/l$) at any time. As described, 1 serious bleeding event of hemorrhagic stomatitis occurred in a patient with CTC grade 4 thrombocytopenia¹³. The 8 mg/kg dose was maintained, and the event resolved without sequelae. No additional temporally associated serious infections or serious bleeding events were associated with these decreases. Total cholesterol, low-density lipoprotein (LDL), high-density lipoprotein (HDL), and triglyceride levels increased by the first assessment (Week 6) and remained relatively stable at subsequent timepoints. ALT and AST levels increased from normal at baseline to > 3 times the upper limit of normal in 10.8% and 3.4% of patients, respectively. Overall, mean ALT, AST, and indirect and total bilirubin values increased from baseline in TCZ-treated

A) NE/NF MTX Patients



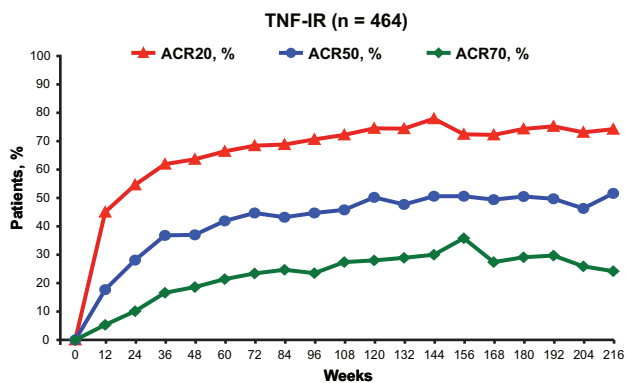
Week	0	12	24	36	48	60	72	84	96	108	120	132	144	156	168	180	192	204
n	618	597	563	525	522	494	488	479	477	459	460	441	429	399	339	271	181	99
ACR20	—	315	354	348	361	350	351	348	350	341	340	342	326	301	261	224	148	85
ACR50	—	183	223	229	256	239	256	261	257	267	265	266	247	233	213	187	127	67
ACR70	—	77	126	141	164	156	152	165	169	163	174	180	173	158	147	135	81	56

B) DMARD-IR Patients



Week	0	12	24	36	48	60	72	84	96	108	120	132	144	156	168	180	192	204	216	228
n	2904	2849	2693	2493	2439	2376	2320	2274	2242	2166	2097	2048	1987	1950	1797	1637	1304	1028	693	460
ACR20	—	1488	1620	1609	1684	1714	1716	1694	1696	1661	1607	1600	1516	1530	1426	1333	1079	854	586	385
ACR50	—	707	929	974	1088	1114	1162	1151	1185	1173	1172	1160	1100	1113	1052	1004	840	637	453	291
ACR70	—	274	423	501	581	634	692	679	698	738	725	701	685	719	712	670	584	437	313	207

C) TNF-IR Patients



Week	0	12	24	36	48	60	72	84	96	108	120	132	144	156	168	180	192	204	216
n	464	453	405	367	354	327	320	308	293	288	275	266	263	257	237	206	165	108	62
ACR20	—	204	221	227	225	217	219	212	207	208	205	198	205	186	171	153	124	79	46
ACR50	—	80	114	135	131	137	143	133	131	132	138	127	133	130	117	104	82	50	32
ACR70	—	24	41	61	66	70	75	76	69	79	77	77	79	92	65	60	49	28	15

Figure 2. Proportions of patients who achieved ACR20/50/70 responses during longterm treatment with TCZ. (A) NE/NF MTX group. (B) DMARD-IR group. (C) TNF-IR group. Data are shown only for weeks containing $\geq 10\%$ of patients originally included in each group at baseline. Last observation carried forward method was used for tender and swollen joint counts. No imputation was used for missing HAQ score, CRP, ESR, or visual analog scale assessments. CRP was used primarily for calculation of ACR response; if missing, ESR was used. Analysis was performed in successful completers, defined as patients who reached each timepoint. The number of patients with assessments decreased over time because some patients had not yet reached later assessments or had withdrawn. Patients who withdrew were classified as missing, and missing data were excluded from summary statistics. ACR: American College of Rheumatology; CRP: C-reactive protein; DAS28: Disease Activity Score at 28 joints; DMARD: disease-modifying antirheumatic drug; ESR: erythrocyte sedimentation rate; IR: inadequate response; LDA: low disease activity; MTX: methotrexate; NE/NF: never exposed/never failed; TNF: tumor necrosis factor; TCZ: tocilizumab.

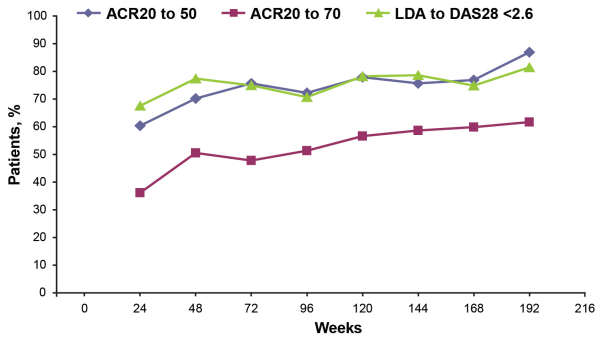
patients as early as Week 2 by a mean of 18 U/l (range -244 to 307 U/l), 8 U/l (range -95 to 169 U/l), 1 $\mu\text{mol/l}$ (range -11 to 19 $\mu\text{mol/l}$), and 1 $\mu\text{mol/l}$ (range -14 to 20 $\mu\text{mol/l}$), and subsequently remained stable.

Efficacy outcomes. An analysis of observed patients was performed at each visit to assess improvements in ACR20/50/70 responses. Results showed that, after an increase in response rates at Week 12, the proportion of patients with improvements remained stable or continued to increase until the end of the evaluable assessment period in all patient populations. ACR20/50/70 responses were 85.9%, 67.7%, and 56.6% in the NE/NF MTX group at Week 204 (Figure 2A); 83.7%, 63.3%, and 45.0% in the DMARD-IR group at Week 228 (Figure 2B); and 74.2%, 51.6%, and 24.2% in the TNF-IR group at Week 216 (Figure 2C). Despite the decreasing number of patients over time (e.g., 2904 at baseline but 2242 at Week 96 in the

DMARD-IR population; Figure 2B), the absolute numbers of responders and good responders (i.e., ACR50, ACR70) in particular increased. The proportion of patients with ACR20 response at Week 12 who then had ACR50/70 responses at later timepoints remained stable or continued to increase until Week 192 in the NE/NF MTX group (Figure 3A) and until Week 216 in the DMARD-IR (Figure 3B) and TNF-IR groups (Figure 3C). Mean SJC and TJC counts decreased over time in the NE/NF MTX, DMARD-IR, and TNF-IR groups (Figure 4). The largest reduction occurred between baseline and Week 24, during which SJC and TJC values decreased by about 50% (SJC range, 48.7%–59.5%; TJC range, 47.1%–55.3%). Thereafter, SJC and TJC values decreased slightly through Week 120 and then remained stable.

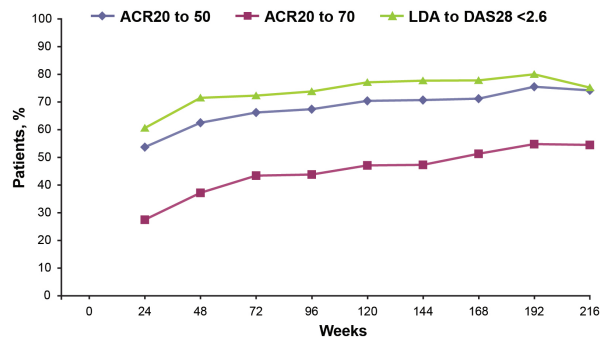
Rates of LDA and DAS28 remission increased until Week 84 for both LDA (n = 312) and DAS28 remission

A) NE/NF MTX Patients



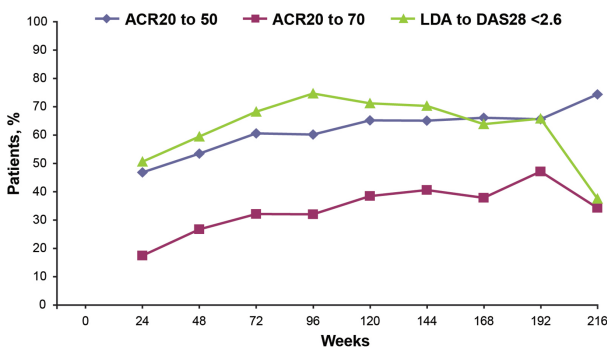
ACR20 responders, N	302	285	268	263	258	239	199	107	24
ACR20 to 50 (n)	182	200	203	190	201	181	153	93	20
ACR20 to 70 (n)	109	144	128	135	146	140	119	66	18
LDA responders, N	231	212	195	191	188	168	127	59	15
LDA to DAS28 <2.6 (n)	156	164	146	135	147	132	95	48	11

B) DMARD-IR Patients



ACR20 responders, N	1429	1317	1265	1234	1168	1114	1008	766	426
ACR20 to 50 (n)	767	823	838	832	822	788	718	578	316
ACR20 to 70 (n)	393	490	549	541	550	527	517	420	232
LDA responders, N	822	761	733	701	658	606	532	401	210
LDA to DAS28 <2.6 (n)	498	544	530	517	507	471	414	321	158

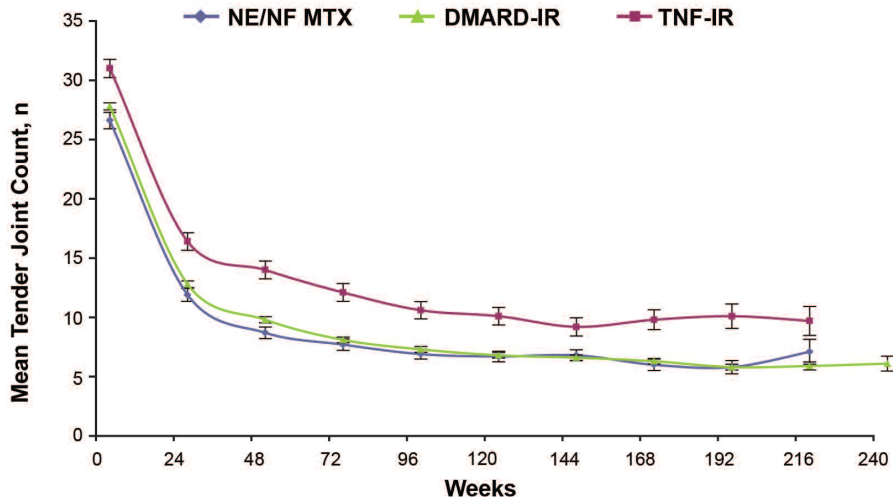
C) TNF-IR Patients



ACR20 responders, N	190	176	162	153	146	143	127	87	35
ACR20 to 50 (n)	89	94	98	92	95	93	84	57	26
ACR20 to 70 (n)	33	47	52	49	56	58	48	41	12
LDA responders, N	79	69	66	63	59	57	47	35	8
LDA to DAS28 <2.6 (n)	40	41	45	47	42	40	30	23	3

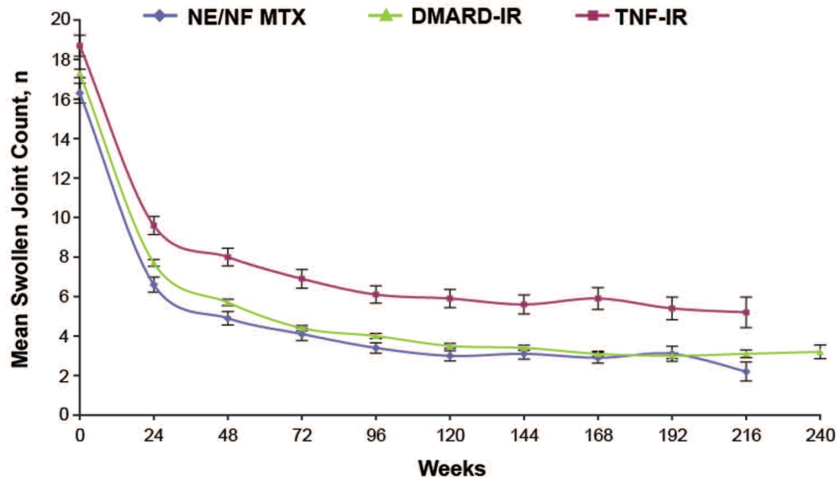
Figure 3. Patients who achieved ACR20 response at Week 12 and later achieved ACR50 and ACR70 responses, or LDA at Week 12 and DAS28 remission. (A) NE/NF MTX group. (B) DMARD-IR group. (C) TNF-IR group. Data are shown only for weeks with $\geq 10\%$ of patients originally included in each group at baseline. Numbers of patients with assessments (n) decreased over time because some patients had not yet reached later assessments or had withdrawn. N represents the total number of responders, that is, patients with ACR20 (or LDA) response at Week 12 with assessment of ACR50 or ACR70 (or DAS28 remission) at each timepoint. ACR: American College of Rheumatology; DAS28: Disease Activity Score at 28 joints; DMARD: disease-modifying antirheumatic drug; IR: inadequate response; LDA: low disease activity; MTX: methotrexate; NE/NF: never exposed/never failed; TNF: tumor necrosis factor.

A) Mean Tender Joint Count \pm SEM



Week	0	24	48	72	96	120	144	168	192	216	240
NE/NF MTX, n	618	582	543	512	496	482	454	377	230	79	—
DMARD-IR, n	2904	2745	2538	2385	2292	2187	2075	1937	1515	879	303
TNF-IR, n	464	423	368	335	310	290	279	256	190	86	—

B) Mean Swollen Joint Count \pm SEM



Week	0	24	48	72	96	120	144	168	192	216	240
NE/NF MTX, n	618	582	543	512	496	482	454	377	230	79	—
DMARD-IR, n	2904	2745	2538	2385	2292	2187	2075	1937	1515	879	303
TNF-IR, n	464	423	368	335	310	290	279	256	190	86	—

Figure 4. Summary of (A) tender joint count (68) and (B) swollen joint count (66) over time by treatment group. Tender and swollen joint count data are shown only for weeks containing $\geq 10\%$ of patients originally included in each treatment group at baseline. Last observation carried forward was used for missing swollen or tender joint counts. Analysis was performed in successful completers, defined as patients who reached each timepoint. Numbers of patients with assessments decreased over time because some patients had not yet reached later assessments or had withdrawn. Patients who withdrew were classified as missing, and missing data were excluded from summary statistics. DMARD: disease-modifying antirheumatic drug; IR: inadequate response; MTX: methotrexate; NE/NF: never exposed/never failed; SEM: standard error of the mean; TNF: tumor necrosis factor.

(n = 243) in the NE/NF MTX group, until Week 72 for LDA (n = 155), and until Week 84 for DAS28 remission (n = 124) in the TNF-IR group. In the DMARD-IR group, rates increased until Week 132 for LDA (n = 1369) and until Week 120 for DAS28 remission (n = 1088; Figure 5). At the end of the evaluable period, 75.0% (69/92) of patients in the NE/NF MTX group, 74.0% (330/446) in the DMARD-IR group, and 57.4% (31/54) in the TNF-IR group had LDA. Further, 57.6% (53/92) of patients in the NE/NF MTX group, 61.2% (273/446) in the DMARD-IR group, and 35.2% (19/54) in the TNF-IR group achieved DAS28 remission. Two-thirds or more of patients in each group with LDA at Week 12 went on to achieve DAS remission at Week 192: 81.4% (48/59) of patients in the NE/NF MTX group, 80.0% (321/401) of patients in the DMARD-IR group, and 65.7% (23/35) of patients in the TNF-IR group (Figure 3). Longterm response maintenance for individual patients was assessed at the latest time with sufficient patients for analysis; Week 204 was chosen as the last point, when > 100 patients were available for analysis in each group. By Week 204, 18.0% (27/150) in the NE/NF MTX group, 24.8% (297/1197) in the DMARD-IR group, and 12.3% (17/138) in the TNF-IR group maintained DAS28 remission continuously for at least 48 weeks.

Disease remission was also calculated using both definitions established by the ACR/EULAR committee as a posthoc exploratory analysis¹⁵. For the all-exposed population overall, the proportion of patients who attained disease remission was 16.5% (172/1044) according to the Boolean definition and 22.7% (237/1044) according to the SDAI definition at Week 216. The proportion of patients who attained disease remission (Boolean criteria) increased from baseline, peaked between 132 and 180 weeks, and then decreased slowly thereafter (Figure 6). Peak values were 26.5% (125/472) in the NE/NF MTX group at Week 132, 13.0% (36/276) in the TNF-IR group at Week 156, and 19.7% (346/1755) in the DMARD-IR group at Week 180. At the last evaluable timepoint, proportions of patients who attained disease remission were 19.0% (15/79; Week 216), 8.1% (7/86; Week 216), and 14.9% (45/303; Week 240), respectively (Figure 6, Table 3). In the all-control population, rates of disease remission at Week 24 were 1.7% (26/1551) in the placebo group, 3.9% (30/773) in the 4 mg/kg TCZ group, and 6.2% (116/1862) in the 8 mg/kg TCZ group, according to the Boolean definition, and they were 2.3% (36/1551), 5.2% (40/773), and 7.9% (148/1862), respectively, according to the SDAI definition.

Categorical change from baseline in HAQ-DI scores (improved, ≤ 0.5 ; unchanged, > -0.5 to < 0.5 ; or worsened, ≥ 0.5) was evaluated up to Week 192 in NE/NF MTX patients and up to Week 216 in DMARD-IR and TNF-IR patients. HAQ-DI scores improved or remained unchanged in the vast majority (> 95%) of patients. Proportions of

patients with improvement in HAQ-DI at the end of the assessment period were higher in NE/NF MTX patients (63.0%, 114/181) and DMARD-IR patients (56.3%, 339/602) at Weeks 192 and 216, respectively, than in TNF-IR patients (38.7%, 24/62) at Week 216. The proportion of patients with HAQ-DI scores that had worsened at the end of the assessment period was relatively low in all groups: 2.8% (5/181) of NE/NF MTX patients, 1.8% (11/602) of DMARD-IR patients, and 4.8% (3/62) of TNF-IR patients.

DISCUSSION

We describe the most comprehensive account to date of prolonged treatment with TCZ of patients (> 4000) with moderate to severe active RA for up to 4.6 years. Results confirm that TCZ has a consistent longterm safety profile in patients with moderate to severe RA. In addition, efficacy among patients who continued TCZ treatment was sustained.

Compared with the TCZ RCT and the integrated safety analysis reported by Schiff, *et al*¹³, no new safety signals were identified in the present analysis. Consistent with the previous report¹³ and with what is expected for an RA biologic agent, the most common AE and SAE were infections. As with rates of AE, overall rates of SAE were similar among the 3 treatment groups in the all-control population and during the first 12 months of treatment in the longer-term all-exposed population. No further evidence of an increase in frequency or type of the most common AE and SAE was noted with prolonged exposure to TCZ. Similarly, the frequency of AE leading to withdrawal or dose modification/interruption, AE of severe intensity, and deaths remained stable or decreased with prolonged exposure to TCZ.

These results also show a sustained and durable response in various measures of clinical and functional efficacy through 4.6 years of TCZ treatment. Most measures of clinical efficacy, including ACR20/50/70 responses, TJC and SJC, ACR core set components, and LDA or DAS28 remission, were sustained across populations and over time. Patients with prolonged exposure to TCZ appeared to improve over time in clinical and functional efficacy measures that typically are more difficult to achieve. For example, proportions of patients with ACR20 response at Week 12 who then had ACR50/70 responses at later timepoints remained stable or continued to increase over time. Two-thirds or more of patients with LDA at Week 12 went on to achieve DAS remission at Week 192, and many patients — up to 63% in the NE/NF MTX group — had improved HAQ-DI scores (≤ -0.5). These results suggest that the improvement in clinical response to TCZ is durable over time.

A joint committee of ACR and EULAR members has published 2 new, more stringent standardized definitions of

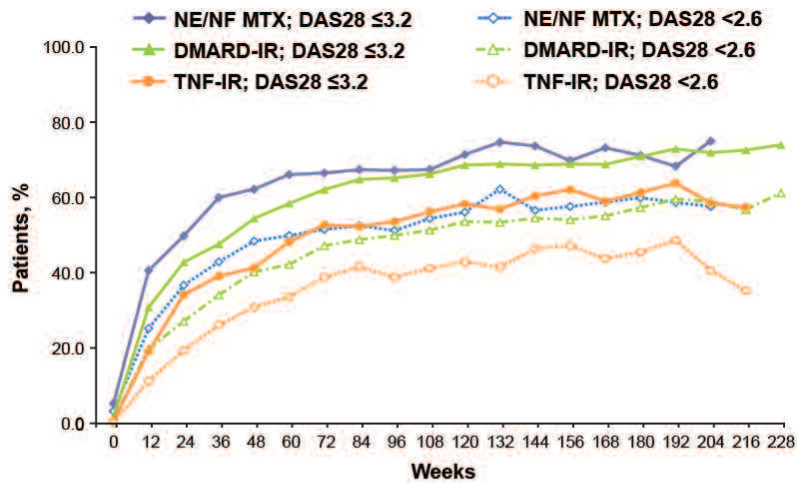


Figure 5. Patients who achieved low disease activity (LDA; DAS28 \leq 3.2) or DAS28 remission (DAS28 < 2.6) during longterm treatment with TCZ. Data are shown only for weeks containing \geq 10% of patients originally included in each group at baseline. Last observation carried forward was used for tender and swollen joint counts. No imputation was used for erythrocyte sedimentation rate or for Patient Global Assessment of Disease Activity score. Numbers of patients with assessments decreased over time because some patients had not yet reached later assessments or had withdrawn. DAS28: Disease Activity Score in 28 joints; DMARD: disease-modifying antirheumatic drug; IR: inadequate response; MTX: methotrexate; NE/NF: never exposed/never failed; TNF: tumor necrosis factor; TCZ: tocilizumab.

NE/NF MTX pts w/ valid assessments, N	616	603	556	515	502	481	472	463	461	445	440	423	410	377	325	257	167	92		
DAS28 \leq 3.2, n	32	245	277	309	312	318	314	312	310	300	314	316	302	263	238	183	114	69		
DAS28 <2.6, n	20	152	204	221	243	240	243	243	236	242	247	263	232	217	191	154	98	53		
DMARD-IR pts w/ valid assessments, N	2889	2844	2660	2452	2397	2308	2269	2232	2176	2097	2030	1988	1916	1902	1725	1589	1265	1001	664	446
DAS28 \leq 3.2, n	50	876	1138	1168	1303	1348	1408	1447	1419	1389	1393	1369	1315	1311	1187	1127	922	720	482	330
DAS28 <2.6, n	23	564	722	836	963	975	1070	1090	1086	1076	1088	1062	1044	1029	951	911	754	590	377	273
TNF-IR pts w/ valid assessments, N	462	446	392	353	334	301	294	298	278	267	254	253	250	248	222	191	152	106	54	
DAS28 \leq 3.2, n	3	85	134	138	138	145	155	156	149	150	148	144	151	154	131	117	97	62	31	
DAS28 <2.6, n	1	50	76	92	103	101	114	124	108	110	109	105	116	117	97	87	74	43	19	

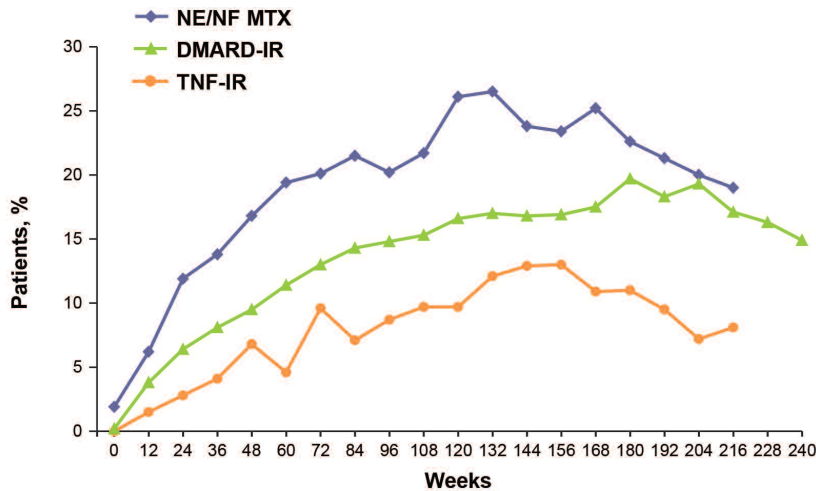


Figure 6. Patients who achieved remission according to ACR/EULAR Boolean criteria. Remission is achieved if the patient has no more than 1 tender joint, no more than 1 swollen joint, CRP no greater than 1 mg/dl, and Patient Global Assessment of Disease Activity score no greater than 1 cm. Data are shown only for weeks containing \geq 10% of patients originally included in each group at baseline. Last observation carried forward was used for tender and swollen joint counts. Nonresponder imputation was used for missing CRP and Patient Global Assessment score. Numbers of patients with assessments decreased over time because some patients had not yet reached later assessments or had withdrawn. ACR: American College of Rheumatology; CRP: C-reactive protein; DMARD: disease-modifying antirheumatic drug; EULAR: European League Against Rheumatism; IR: inadequate response; MTX: methotrexate; NE/NF: never exposed/never failed; TNF: tumor necrosis factor.

NE/NF MTX pts w/ valid assessments, N	618	616	582	556	543	525	512	502	496	488	482	472	454	431	377	327	230	150	79		
Remission, n	12	38	69	77	91	102	103	108	100	106	126	125	108	101	95	74	49	30	15		
DMARD-IR pts w/ valid assessments, N	2904	2899	2747	2642	2538	2457	2385	2344	2292	2238	2187	2129	2075	2031	1937	1755	1515	1197	879	584	303
Remission, n	6	110	175	214	242	281	310	336	339	343	364	361	348	343	339	346	278	231	150	95	45
TNF-IR pts w/ valid assessments, N	464	463	424	395	368	345	335	324	310	300	290	282	279	276	256	237	190	138	86		
Remission, n	0	7	12	16	25	16	32	23	27	29	28	34	36	36	28	26	18	10	7		

Personal non-commercial use only. The Journal of Rheumatology Copyright © 2013. All rights reserved.

Table 3. ACR/EULAR remission rates and components at the last evaluable timepoint in the efficacy population. Remission is achieved if the patient has no more than 1 tender joint, no more than 1 swollen joint, CRP no greater than 1 mg/dl, and Patient Global Assessment of Disease Activity score no greater than 1. Last evaluable timepoint is the last week with $\geq 10\%$ of patients originally included in each group at baseline. Last observation carried forward was used for TJC and SJC. Nonresponder imputation was used for missing CRP and Patient Global Assessment Disease Activity score.

Criterion, n (%)	NE/NF MTX, n = 618	DMARD-IR n = 2904	TNF-IR, n = 464
Last evaluable timepoint	Week 216	Week 240	Week 216
No. patients with efficacy assessment at timepoint	79	303	86
TJC ≤ 1	39 (49.4)	170 (56.1)	30 (34.9)
SJC ≤ 1	56 (70.9)	188 (62.0)	39 (45.3)
CRP ≤ 1 mg/dl	44 (55.7)	200 (66.0)	60 (69.8)
Patient global assessment of disease activity score ≤ 1 (1–10 scale)	18 (22.8)	58 (19.1)	14 (16.3)
Remission (all ≤ 1)	15 (19.0)	45 (14.9)	7 (8.1)
Remission (SDAI ≤ 3.3)	16 (20.3)	63 (20.8)	10 (11.6)

ACR: American College of Rheumatology; CRP: C-reactive protein; DMARD: disease-modifying antirheumatic drug; EULAR: European League Against Rheumatism; IR: inadequate response; MTX: methotrexate; NE/NF: never exposed/never failed; SDAI: Simplified Disease Activity Index; SJC: swollen joint count; TJC: tender joint count; TNF: tumor necrosis factor.

disease remission for use in RA clinical trials¹⁵. The first definition is Boolean-based and requires that patients have TJC, SJC, CRP (mg/dl), and Patient Global Assessment (1–10 scale) of Disease Activity score ≤ 1 at any time. The second definition is index-based and requires that patients have SDAI scores ≤ 3.3 at any time. Overall, the proportions of patients who attained disease remission were 16.5% (Boolean) and 22.7% (SDAI), indicating that about 1 of 5 patients who tolerated TCZ and opted into the extension trial achieved disease remission by these criteria for up to 216 weeks. In each of the efficacy groups, the proportion of patients who attained disease remission decreased slightly with time. Contributions of the individual components used to calculate ACR/EULAR remission rates may provide some insight into attainment of these remission rates. At most timepoints, improvements in markers of inflammation (i.e., CRP, SJC, and TJC) were significant; however, attainment of Patient Global Assessment of Disease Activity score was lower in comparison and therefore became the rate-limiting component for attainment of remission. In contrast, Patient Global Assessment of Disease Activity score has a very small effect on the calculation of DAS28 < 2.6 , and thus is a minor contributing factor. On the other hand, ESR has a very significant effect on DAS28²⁰; therefore, agents that profoundly inhibit ESR response will lead to higher DAS28 remission rates.

Although cumulative analyses of safety and efficacy provide a more comprehensive view of a drug's clinical profile than do individual studies, several important limitations must be considered when longterm data are interpreted. Because longterm studies follow patients for several years, patient numbers decrease over time. For example, the proportion of TNF-IR patients with LDA who then attained

DAS remission decreased from 65.7% at Week 192 to 37.5% at Week 216, possibly because the sample size at Week 216 was only 8 (Figure 3C). Patients who participate and continue treatment in open-label extensions of clinical trials typically experience sufficient clinical and functional improvement and acceptable tolerability. Therefore, safety and efficacy measurements may be more favorable than those observed in short-term studies (e.g., 24 or 52 weeks).

Another caveat is that treatment modifications were permitted according to predefined criteria in the clinical trial protocols. Thus, original treatment assignment may be less reflective of treatment received over time. For example, investigators were permitted to modify or add a DMARD for safety or efficacy reasons. Treatment modifications made during the course of the study could have affected the safety and efficacy data. Additionally, the ways in which data are handled for short-term and longterm efficacy analyses differ. For example, in the 24-week analyses, missing data were imputed conservatively as nonresponders because those patients are more likely to withdraw for safety reasons or lack of efficacy. In longterm extensions, however, missing data are not imputed (i.e., only patients with observed data are reported) because other factors (e.g., inconvenience of longterm study participation, relocation) are likely to influence a patient's decision to withdraw. Finally, in our study, efficacy was evaluated only up to points at which $\geq 10\%$ of patients initially randomly assigned to the treatment group remained in the study. These differences preclude direct comparisons between cumulative longterm efficacy analyses and the 24-week and 52-week randomized trials.

Data from this longterm cumulative safety and efficacy analysis demonstrate that TCZ has a safety profile

consistent with previous observations with no new safety signals and that it provides durable efficacy for up to 4.6 years of treatment in patients with RA.

ACKNOWLEDGMENT

The authors acknowledge Maribeth Bogush, PhD, and Sara Duggan, PhD, who provided writing services on behalf of F. Hoffmann-La Roche Ltd.

REFERENCES

1. Lee DM, Weinblatt ME. Rheumatoid arthritis. *Lancet* 2001;358:903-11.
2. Scott DL. Radiological progression in established rheumatoid arthritis. *J Rheumatol Suppl.* 2004 Mar;69:55-65.
3. Welsing PM, van Gestel AM, Swinkels HL, Kiemeneij LA, van Riel PL. The relationship between disease activity, joint destruction, and functional capacity over the course of rheumatoid arthritis. *Arthritis Rheum* 2001;44:2009-17.
4. Salaffi F, Carotti M, Gasparini S, Intorcchia M, Grassi W. The health-related quality of life in rheumatoid arthritis, ankylosing spondylitis, and psoriatic arthritis: A comparison with a selected sample of healthy people. *Health Qual Life Outcomes* 2009;7:25.
5. Lundkvist J, Kastang F, Kobelt G. The burden of rheumatoid arthritis and access to treatment: Health burden and costs. *Eur J Health Econ* 2008;8:S49-60.
6. Mihara M, Kasutani K, Okazaki M, Nakamura A, Kawai S, Sugimoto M, et al. Tocilizumab inhibits signal transduction mediated by both mIL-6R and sIL-6R, but not by the receptors of other members of IL-6 cytokine family. *Int Immunopharmacol* 2005;5:1731-40.
7. Smolen JS, Beaulieu A, Rubbert-Roth A, Ramos-Remus C, Rovinsky J, Alecock E, et al. Effect of interleukin-6 receptor inhibition with tocilizumab in patients with rheumatoid arthritis (OPTION study): A double-blind, placebo-controlled, randomised trial. *Lancet* 2008;371:987-97.
8. Genovese MC, McKay JD, Nasonov EL, Mysler EF, da Silva NA, Alecock E, et al. Interleukin-6 receptor inhibition with tocilizumab reduces disease activity in rheumatoid arthritis with inadequate response to disease-modifying antirheumatic drugs: The tocilizumab in combination with traditional disease-modifying antirheumatic drug therapy study. *Arthritis Rheum* 2008;58:2968-80.
9. Emery P, Keystone E, Tony HP, Cantagrel A, van Vollenhoven R, Sanchez A, et al. IL-6 receptor inhibition with tocilizumab improves treatment outcomes in patients with rheumatoid arthritis refractory to anti-tumour necrosis factor biologicals: Results from a 24-week multicentre randomised placebo-controlled trial. *Ann Rheum Dis* 2008;67:1516-23.
10. Jones G, Sebba A, Gu J, Lowenstein MB, Calvo A, Gomez-Reino JJ, et al. Comparison of tocilizumab monotherapy versus methotrexate monotherapy in patients with moderate to severe rheumatoid arthritis: The AMBITION study. *Ann Rheum Dis* 2010;69:88-96.
11. Kremer JM, Blanco R, Brzosko S, Burgos-Vargas R, Halland AM, Vernon E, et al. Tocilizumab inhibits structural joint damage in rheumatoid arthritis patients with inadequate responses to methotrexate: Results from the double-blind treatment phase of a randomized placebo-controlled trial of tocilizumab safety and prevention of structural joint damage at one year. *Arthritis Rheum* 2011;63:609-21.
12. Nishimoto N, Miyasaka N, Yamamoto K, Kawai S, Takeuchi T, Azuma J. Long-term safety and efficacy of tocilizumab, an anti-interleukin-6 receptor monoclonal antibody, in monotherapy, in patients with rheumatoid arthritis (the STREAM study): Evidence of safety and efficacy in a 5-year extension study. *Ann Rheum Dis* 2008;68:1580-4.
13. Schiff MH, Kremer JM, Jahreis A, Vernon E, Isaacs JD, van Vollenhoven RF. Integrated safety in tocilizumab clinical trials. *Arthritis Res Ther* 2011;13(R141):1-13.
14. Genentech Inc. Actemra (tocilizumab) prescribing information. Genentech Inc. South San Francisco, CA: Genentech Inc.; 2010. [Internet. Accessed December 13, 2012.] Available from: www.gene.com/gene/products/information/actemra/pdf/pi.pdf
15. Felson DT, Smolen JS, Wells G, Zhang B, van Tuyl LH, Funovits J, et al. American College of Rheumatology/European League Against Rheumatism provisional definition of remission in rheumatoid arthritis for clinical trials. *Ann Rheum Dis* 2011;70:404-13.
16. Curtis JR, Xie F, Chen L, Spettell C, McMahan RM, Fernandes J, et al. The incidence of gastrointestinal perforations among rheumatoid arthritis patients. *Arthritis Rheum* 2011;63:346-51.
17. Solomon DH, Karlson EW, Rimm EB, Cannuscio CC, Mandl LA, Manson JE, et al. Cardiovascular morbidity and mortality in women diagnosed with rheumatoid arthritis. *Circulation* 2003;107:1303-7.
18. Watson DJ, Rhodes T, Guess HA. All-cause mortality and vascular events among patients with rheumatoid arthritis, osteoarthritis, or no arthritis in the UK General Practice Research Database. *J Rheumatol* 2003;30:1196-202.
19. Solomon DH, Goodson NJ, Katz JN, Weinblatt ME, Avorn J, Setoguchi S, et al. Patterns of cardiovascular risk in rheumatoid arthritis. *Ann Rheum Dis* 2006;65:1608-12.
20. Fransen J, van Riel PL. DAS remission cut points. *Clin Exp Rheumatol* 2006;24:S29-32.