

# Detection of Sacroiliitis by Short-tau Inversion Recovery and T2-weighted Turbo Spin Echo Sequences: Results from the SIMACT Study

Juliane Greese, Torsten Diekhoff, Joachim Sieper, Carsten Schwenke, Marcus R. Makowski, Denis Poddubnyy, Bernd Hamm, and Kay Geert A. Hermann 

**ABSTRACT. Objective.** To compare proton density-weighted short-tau inversion recovery (PD-STIR) and T2-weighted fat-suppressed turbo spin echo (T2-FS) sequences for detecting osteitis lesions of the sacroiliac joints (SIJ) in patients with chronic low back pain (CLBP).

**Methods.** This prospective study included 110 patients with CLBP and suspected spondyloarthritis and 18 healthy controls. All 128 participants (age range: 19–57 yrs) underwent 3.0 Tesla magnetic resonance imaging (MRI) of the SIJ including PD-STIR and T2-FS. Two readers independently scored PD-STIR and T2-FS images for osteitis in separate sessions. Sum scores and signal-to-noise (SNR) and contrast-to-noise (CNR) ratios were calculated. Images were further analyzed as to whether they fulfilled the Assessment of SpondyloArthritis international Society (ASAS) criterion of a positive MRI (MRI+). Interreader agreement was calculated using intraclass correlation coefficients.

**Results.** Average osteitis sum scores were higher for T2-FS images (mean sum score of 4.10 in T2-FS vs 2.55 in PD-STIR,  $p = 0.017$ ). Mean SNR was 16.54 for PD-STIR and 37.30 for T2-FS ( $p = 0.0289$ ). Mean CNR was 4.14 for PD-STIR and 20.20 for T2-FS ( $p = 0.0212$ ). For both readers, the ASAS MRI+ definition was more often fulfilled by T2-FS than by PD-STIR images, resulting in more patients being classified as having axial spondyloarthritis (axSpA): 68 patients using T2-FS versus 58 patients using PD-STIR. Interreader intraclass correlation coefficients were very good for both PD-STIR (0.91) and T2-FS (0.86).

**Conclusion.** T2-FS sequences improve image quality and hence the detection of osteitis compared to the PD-STIR sequence. More patients were classified as axSpA based on a positive MRI by T2-FS. (First Release January 15 2019; J Rheumatol 2019;4:376–83; doi:10.3899/jrheum.171425)

## Key Indexing Terms:

MAGNETIC RESONANCE IMAGING  
OSTEITIS

AXIAL SPONDYLOARTHRITIS  
SACROILIAC JOINT

From the Department of Radiology, Charité–Universitätsmedizin Berlin, Campus Mitte, Humboldt-Universität zu Berlin, Freie Universität Berlin; Department of Gastroenterology, Infectiology and Rheumatology, Charité–Universitätsmedizin Berlin, Campus Benjamin Franklin, Humboldt-Universität zu Berlin, Freie Universität Berlin; SCO:SSiS Statistical Consulting; German Rheumatism Research Center, Berlin, Germany.

J. Greese, Department of Radiology, Charité–Universitätsmedizin Berlin, Campus Mitte, Humboldt-Universität zu Berlin, Freie Universität Berlin; T. Diekhoff, MD, Department of Radiology, Charité–Universitätsmedizin Berlin, Campus Mitte, Humboldt-Universität zu Berlin, Freie Universität Berlin; J. Sieper, MD, PhD, Professor of Rheumatology, Department of Gastroenterology, Infectiology and Rheumatology, Charité–Universitätsmedizin Berlin, Campus Benjamin Franklin, Humboldt-Universität zu Berlin, Freie Universität Berlin; C. Schwenke, PhD, SCO:SSiS Statistical Consulting; M.R. Makowski, MD, PhD, Professor of Radiology, Department of Radiology, Charité–Universitätsmedizin Berlin, Campus Mitte, Humboldt-Universität zu Berlin, Freie Universität Berlin; D. Poddubnyy, MD, PhD, Professor of Rheumatology, Department of Gastroenterology, Infectiology and Rheumatology, Charité–Universitätsmedizin Berlin, Campus Benjamin Franklin, Humboldt-Universität zu Berlin, Freie Universität Berlin, and German Rheumatism Research Center; B. Hamm, MD, PhD, Professor of Radiology, Department of Radiology, Charité–Universitätsmedizin Berlin, Campus Mitte, Humboldt-Universität zu Berlin, Freie Universität Berlin; K.G. Hermann, MD, PhD, Department of Radiology, Charité–Universitätsmedizin Berlin, Campus Mitte, Humboldt-Universität zu Berlin, Freie Universität Berlin.

Address correspondence to Dr. K.G. Hermann, Charité–Universitätsmedizin Berlin, Department of Radiology (CCM), Charitéplatz 1, 10117 Berlin, Germany. E-mail: kghermann@gmail.com  
Accepted for publication August 27, 2018.

The diagnosis and classification of axial spondyloarthritis (axSpA) strongly relies on imaging of the sacroiliac joints (SIJ) and the spine<sup>1</sup>. With an estimated prevalence of 1.9%, SpA is regarded as a relevant rheumatic disorder<sup>2</sup>. Inflammatory back pain affecting the SIJ and spine is the leading symptom of its axial form<sup>3,4</sup>.

The Assessment of Spondyloarthritis international Society (ASAS) established classification criteria for axSpA in 2009<sup>3,5</sup>. These criteria are based on chronic back pain starting before age 45 and HLA-B27 positivity or imaging evidence of sacroiliitis as key domains with a variety of additional clinical and laboratory abnormalities. Chronic sacroiliitis on digital radiographs and active sacroiliitis on magnetic resonance imaging (MRI) are equally relevant. In addition, efforts were made to define a “positive MRI” of the SIJ<sup>6,7</sup>, and a state-of-the-art MRI protocol was proposed, which should include T1-weighted spin echo sequences and short-tau inversion recovery (STIR) sequences<sup>7,8</sup>. The most crucial MRI lesion demonstrating inflammation is paraspinal osteitis, also designated as bone marrow edema. The term *osteitis* will be used throughout this article, because it better reflects the true character of the finding<sup>9,10</sup>.

STIR is the best-known MRI sequence among rheumatol-

ogists for the detection of inflammation of the SIJ. However, investigators have also proposed other MRI techniques including use of a T2-weighted fat-suppressed turbo spin echo (T2-FS) sequence or acquisition of a T1-weighted FS turbo spin echo sequence after administration of a parametric contrast medium such as a gadolinium-based agent (T1/Gd)<sup>11,12</sup>. Clinical trials were conducted to compare STIR and T1/Gd sequences both for spinal and SIJ imaging<sup>13,14</sup>. In these trials, use of a gadolinium-based contrast agent was shown to increase lesion detection by only 6%<sup>14</sup>. This difference is in general regarded as negligible, and MRI protocols currently used for clinical trials typically include T1 and STIR sequences only. The other MRI technique capable of demonstrating inflammation — T2-FS sequence — has to date not been investigated to a larger extent in comparison to STIR or T1/Gd sequences in the context of axSpA.

STIR and T2-FS sequences use different techniques for fat suppression<sup>15</sup> and depict osteitis lesions with a bright signal because of their long T2 relaxation time resulting from an increased free water content<sup>11</sup>. STIR relies on an inversion radiofrequency pulse that is applied at a given time in the course of the MR sequence to null the signal of fat. T2-FS sequences use spectral fat suppression, accomplished by applying strong gradient pulses that specifically erase signal from fat spins<sup>16</sup>. T2-FS is known to obtain a specific fat suppression whereas STIR is not specific for fat if any other material with a similar T1 relaxation time to that of fat would be present, such as methemoglobin, mucoid tissue, or melanin<sup>17</sup>. However, STIR reveals a robust performance in every field strength while specific fat saturation is vulnerable to magnetic field inhomogeneities<sup>18</sup>.

Based on images and clinical data of the previously published SacroIliac joint MAGnetic resonance imaging and Computed Tomography (SIMACT) study<sup>19</sup>, we aimed to define the relative value of proton density-weighted STIR (PD-STIR) and T2-FS sequences for the detection of osteitis and to evaluate possible differences in the number of inflammatory lesions detected in the SIJ of patients with axSpA.

## MATERIALS AND METHODS

**Subjects.** The SIMACT study enrolled 110 consecutive patients presenting to the rheumatology department of a university hospital with chronic low back pain (CLBP) and suspected SpA. Hence, this cohort included patients with ankylosing spondylitis (AS), nonradiographic axial spondyloarthritis (nr-axSpA), osteitis condensans ilii, osteoarthritis (OA) of the SIJ, and nonspecific back pain. This prospective single-center study aimed at comparing the diagnostic value of conventional radiographs, low-dose computed tomography, and MRI with a special focus on structural damage such as erosions, sclerosis, and joint space alterations. These results have been reported recently<sup>19</sup>. A secondary aim of the SIMACT trial was to compare PD-STIR and T2-FS sequences for the detection of osteitis. Patients older than 60 years, or with pacemakers, other kinds of metal implants, or pregnant patients were not eligible for this study. Eighteen age- and sex-matched healthy controls without any reported back pain or known spinal or SIJ disease served as controls. In addition to MRI, clinical variables were documented including the duration and character of back pain,

C-reactive protein values, HLA-B27 testing, previous diseases of the back, family history of SpA, and evidence of uveitis, psoriasis, or inflammatory bowel disease. An expert rheumatologist established the final diagnosis, as described earlier<sup>19</sup>. In short, all clinical data, laboratory results, and imaging findings were taken into account using a published algorithm<sup>20</sup>.

The study, including imaging procedures, was approved by the local ethics committee (registration number EA1/073/10). All patients and controls signed informed consent prior to the MRI scan.

**MRI protocol.** All study participants underwent an MR examination on a 3.0-Tesla system (Siemens Magnetom Skyra; Siemens). A PD-STIR sequence and T2-FS sequence in the oblique coronal plane were obtained as part of the MRI protocol of the SIMACT study. The technical variables of the 2 sequences are presented in Table 1. T1-weighted spin echo and 3-D gradient echo sequences were used for anatomic correlation.

**Osteitis scoring.** Images were scored for osteitis in 2 separate sessions with readers blinded to any clinical information of the patients and controls. Blinding was accomplished by assigning a randomized pseudonym to each subject in each session. Session 1 included each subject's PD-STIR sequence and session 2 the T2-FS sequence. In both sessions, an MR sequence was available for anatomic reference.

Image scoring was done as described previously by our group<sup>19</sup>. Briefly, SIJ were divided into 4 quadrants (2 quadrants in the sacral portion and 2 quadrants in the iliac portion) and 3 positions (anterior, middle, posterior) on each side, resulting in a total of 12 regions to be evaluated on each side (Figure 1). Images were scored for the presence of osteitis as a sign of inflammation. A 4-point scale was used to grade the extent of osteitis (0 = no osteitis detectable, 1 = osteitis in up to 33% of the quadrant area, 2 = osteitis in up to 66% of the quadrant area, 3 = osteitis in > 66% of the quadrant area), resulting in a total sum score of 0–36 for each SIJ and 0–72 per patient.

Scoring was performed independently by 1 research student (reader 1, with 6 months of experience in musculoskeletal imaging) and 1 junior radiologist (reader 2, with 5 years of experience in musculoskeletal imaging) on a high-resolution monitor using OsiriX (version 6.4, Pixmeo SARL) as medical viewing software.

In addition, we assessed whether the MRI was positive (yes/no) in accordance with the ASAS definition of active sacroiliitis on MRI ("positive MRI", MRI+)<sup>6,7</sup>. Osteitis had to be present in the subchondral or periarticular bone marrow. Results were only counted positive if both readers were confident that paraarticular osteitis in at least 2 consecutive slices was present and the lesions were compatible with axSpA<sup>7</sup>.

Prior to the 2 scoring sessions, the 2 readers had 2 training sessions under the supervision of a senior radiologist (15 years of experience in musculoskeletal imaging). The training began with a discussion of the range of findings in sacroiliitis, OA, and osteitis condensans ilii, as well as anatomic variants in 10 cases, and typical imaging findings were compiled in a reference atlas (Figure 2) in PowerPoint format. Thereafter a training set of 5 MR examinations was scored independently by the 2 readers and the supervisor, followed by a joint discussion of discrepant scores. The 2 main scoring sessions were initiated after the completion of the training and further calibration between primary readers.

**Quantitative measurements.** To obtain a numerical estimate of image quality, both contrast-to-noise ratios (CNR) and signal-to-noise ratios (SNR) were calculated. These measurements were performed by 1 reader (reader 1) using the same high-resolution monitor as for the scoring sessions. The following regions of interest (ROI) were measured by using an electronic cursor on both sides of the SIJ: osteitis (if present), normal bone marrow, muscle tissue, and air outside the patient. The ROI size was kept constant for all measurements. Both mean signal intensity and SD were documented.

For calculation of SNR, the mean signal intensity of the different tissues was divided by that of image noise outside the patient (i.e., air).

CNR was calculated by dividing the difference between mean tissue signal intensity and mean signal intensity of muscle by mean signal intensity of image noise outside of the patient<sup>21</sup>.

Table 1. Technical variables.

	TR, ms	TE, ms	TI, ms	Flip Angle, degrees	Slice Thickness, mm	Field of View, mm	Matrix Size, mm	Orientation	Images	Acquisition Time, s
PD-STIR	5000	23	200	138	3	240 × 240	384 × 384	Oblique coronal	21	180
T2-FS	4940	94	—	150	3	240 × 240	384 × 384	Oblique coronal	21	300

Values are given as example for the MRI scanner Magnetom Skyra by Siemens. MRI: magnetic resonance imaging; TR: repetition time; TE: echo time; TI: inversion time; PD-STIR: proton density-weighted short-tau inversion recovery sequence; T2-FS: T2-weighted fat-suppressed turbo spin echo sequence.

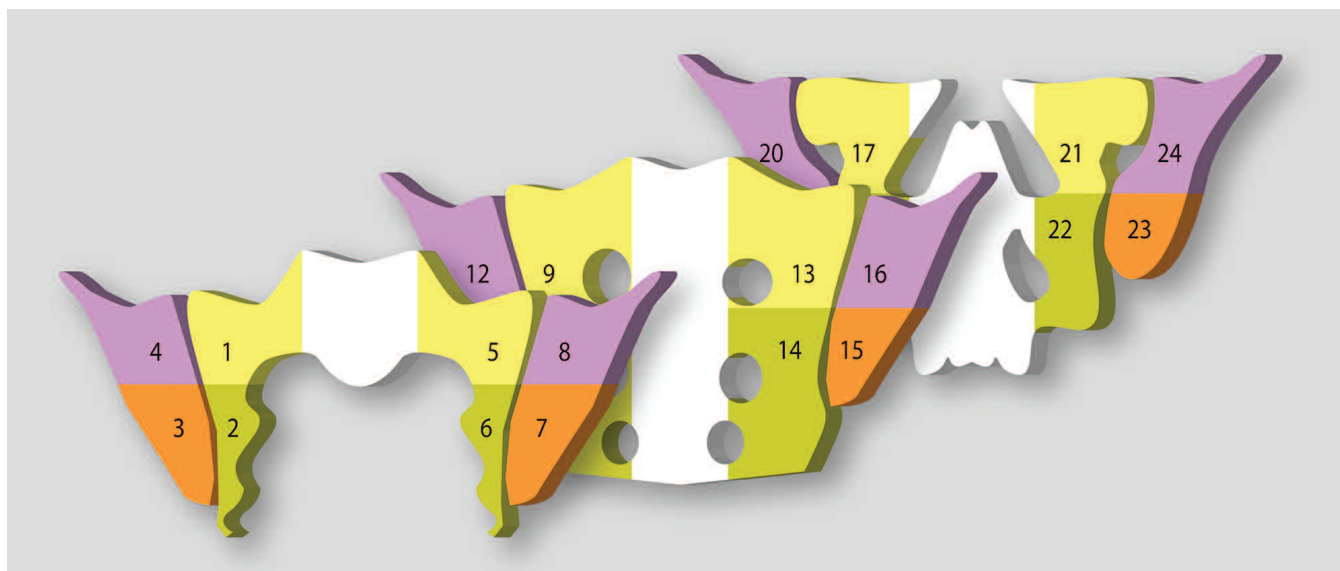


Figure 1. A 3-D representation of the 24 joint regions evaluated. The first 8 quadrants show changes of both sacroiliac joints in their anterior aspect, defined by the depiction of the true pelvis in the center of the MR image. The second 8 quadrants (numbered 9 to 16) show both sacroiliac joints in their mid-position, defined by the depiction of the sacral foramina. The remaining quadrants (numbered 17 to 24) show the posterior aspect, recognized by visualization of sacral nerve roots and the enthesal joint compartment. MR: magnetic resonance.

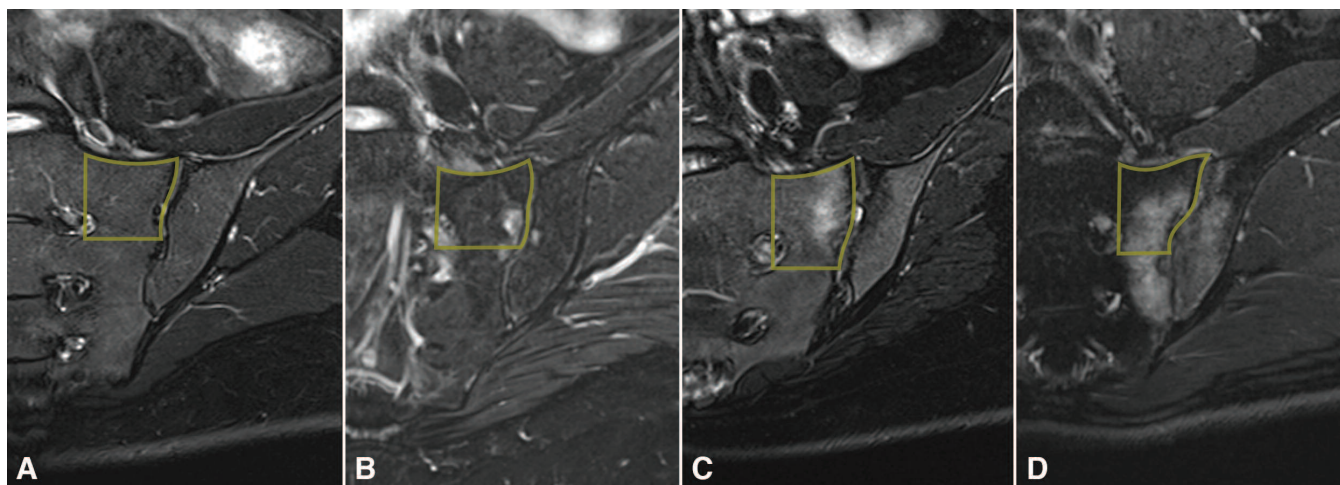


Figure 2. Imaging examples of osteitis grades 0–3 from the atlas of reference images. T2-weighted fat-suppressed turbo spin echo sequences are shown. A. Grade 0. B. Grade 1. C. Grade 2. D. Grade 3. Quadratic example regions are drawn as overlays.

**Statistical analysis.** For statistical analysis, patients with nr-axSpA and AS were assigned to group A (axSpA), patients with osteitis condensans ilii and OA to group B (mechanical disease), and patients with back pain without structural changes to group C (nonspecific back pain). The Kruskal-Wallis

test was used to test for group differences of clinical data. Controls were analyzed separately.

Osteitis sum scores were analyzed using linear models with repeated measures and the patient as repeated factor. The number of regions affected



by osteitis was tested with the nonparametric McNemar test. Interreader variance was derived from the osteitis sum scores and was calculated as intraclass correlation coefficients (absolute agreement definition). The same method was done to calculate intrareader reliability with a random selection of 15 cases. Regarding ASAS classification for positive MRI sacroiliitis, binary values were counted positive only if both readers agreed on the respective scoring item. Statistical analysis was performed with SAS 9.4 (SAS Institute Inc.) and SPSS Statistics, version 23.

## RESULTS

**Subjects.** MRI was completed in all patients and controls. A total of 256 SIJ were scored. The mean age of the study population of 110 patients (53 men, 57 women) was 36.1 years (range 19–57 yrs), with a mean duration of chronic back pain of 6 years and 10 months (range: 2 mos to 32 yrs; median: 4 yrs). Inflammatory back pain was present in 87 patients (79.1%). The final diagnoses made by the expert rheumatologist were as follows: group A (axSpA) — 58 patients (52.7 %); group B (mechanical disease) — 36 patients (32.7%); group C (nonspecific back pain) — 16 (14.5%). In group A, 23 patients had AS and 35 had

nr-axSpA. The 18 controls (9 men, 9 women) had a mean age of 34.6 years (range: 20–53 yrs). Clinical variables of the patients and controls are compiled in Supplementary Table 1, available with the online version of this article.

**Osteitis sum score.** In all 110 patients taken together, reader 1 assigned a mean osteitis sum score of  $2.55 \pm 4.41$  for the PD-STIR sequence and of  $3.90 \pm 5.67$  for the T2-FS sequence. Reader 2 assigned a mean osteitis sum score of  $3.95 \pm 5.79$  and  $7.10 \pm 8.69$ , respectively. The following p values were derived from linear statistical models taking both readers into account. Osteitis sum scores showed a statistically significant difference between the 2 sequences ( $p = 0.017$ ; Figure 3) and also between the 3 patient subgroups ( $p < 0.0001$ ). On average, a higher osteitis sum score was assigned using the T2-FS sequence (mean sum score of 4.10 for T2-FS vs 2.55 for PD-STIR). The mean osteitis sum score was highest in the axSpA group (6.54), followed by the mechanical disease group (2.32) and the group of nonspecific back pain (1.13).

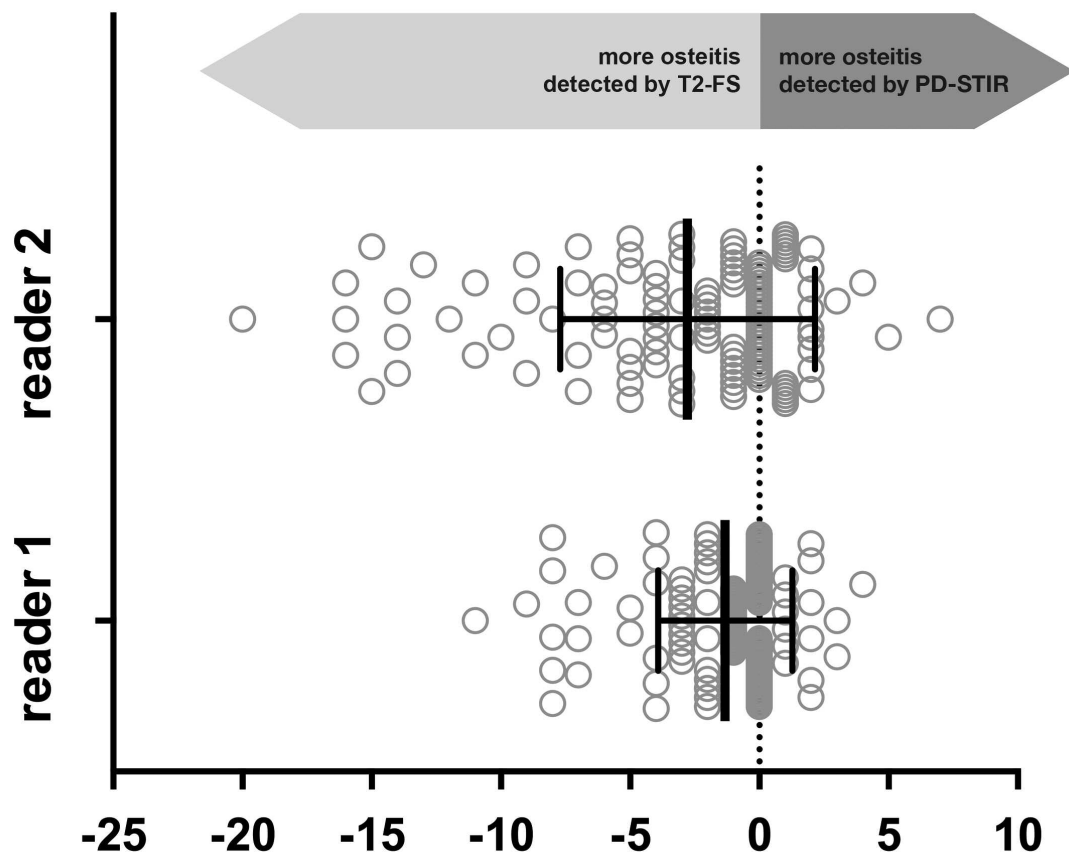


Figure 3. Overall osteitis sum score of both readers. Points represent sum scores calculated by subtracting osteitis sum scores of T2-FS sequences from osteitis sum scores of PD-STIR sequence for each subject. Negative values represent less osteitis and positive values more osteitis detected by PD-STIR. T2-FS: T2-weighted fat-suppressed turbo spin echo; PD-STIR: proton density-weighted short-tau inversion recovery.

**Different osteitis cutoff values.** In the 110 patients, inflammatory lesions with an osteitis grade of 1 or higher in at least 1 region, as detected by both readers, were present in 60 cases (54.5%) on PD-STIR and 72 subjects (65.5%) on T2-FS ( $p = 0.031$ ). When defining an osteitis cutoff score of  $\geq 2$  in at least 1 affected region per patient, 19 patients (17.3%) were positive on PD-STIR and 31 (28.2%) on T2-FS ( $p = 0.004$ ).

**Effect of PD-STIR versus T2-FS selection on ASAS classification of patients.** Classification was assessed schematically for each patient separately, first taking into account clinical variables, consensus radiograph results, and consensus PD-STIR results, and second using consensus T2-FS instead of PD-STIR, without taking into account the clinical diagnosis. The use of T2-FS resulted in a slight change in patient classification (Figure 4) with 4 more patients being classified as having axSpA compared to the PD-STIR sequence (6 patients were classified positive with T2-FS but not with PD-STIR; 2 patients were classified with PD-STIR but not T2-FS). Importantly, fewer patients were classified as having axSpA based on HLA-B27 positivity and clinical variables alone (the so-called “clinical arm”; Figure 4), and the axSpA classification criteria were fulfilled by imaging in more patients (58 patients taking PD-STIR into account vs 68 patients taking T2-FS into account).

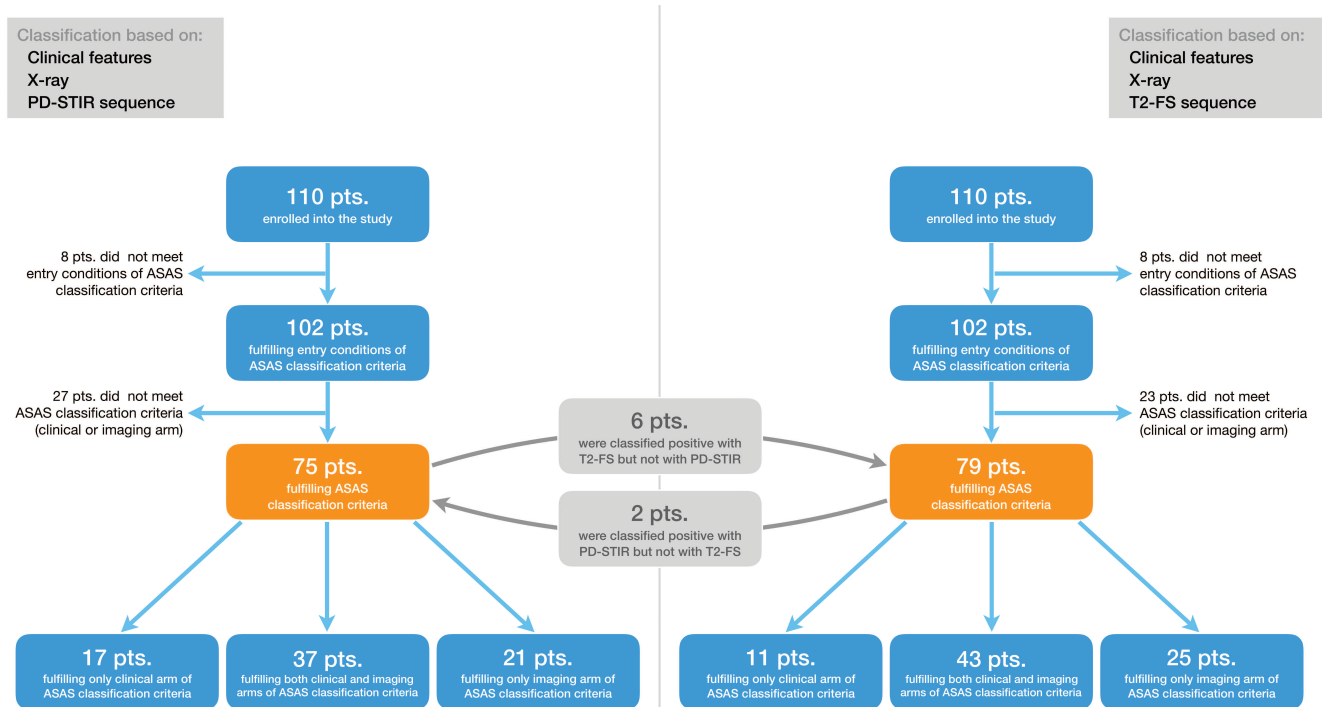
When the 2 MRI sequences were compared with the clinical diagnosis as established by the treating rheumatologist [axSpA ( $n = 58$ ) vs non-SpA ( $n = 52$ )], the sensitivity

for a positive MRI according to the ASAS definition was 56.9% and 75.9% for PD-STIR and T2-FS, respectively, and specificity was 34.6% and 44.2%, respectively.

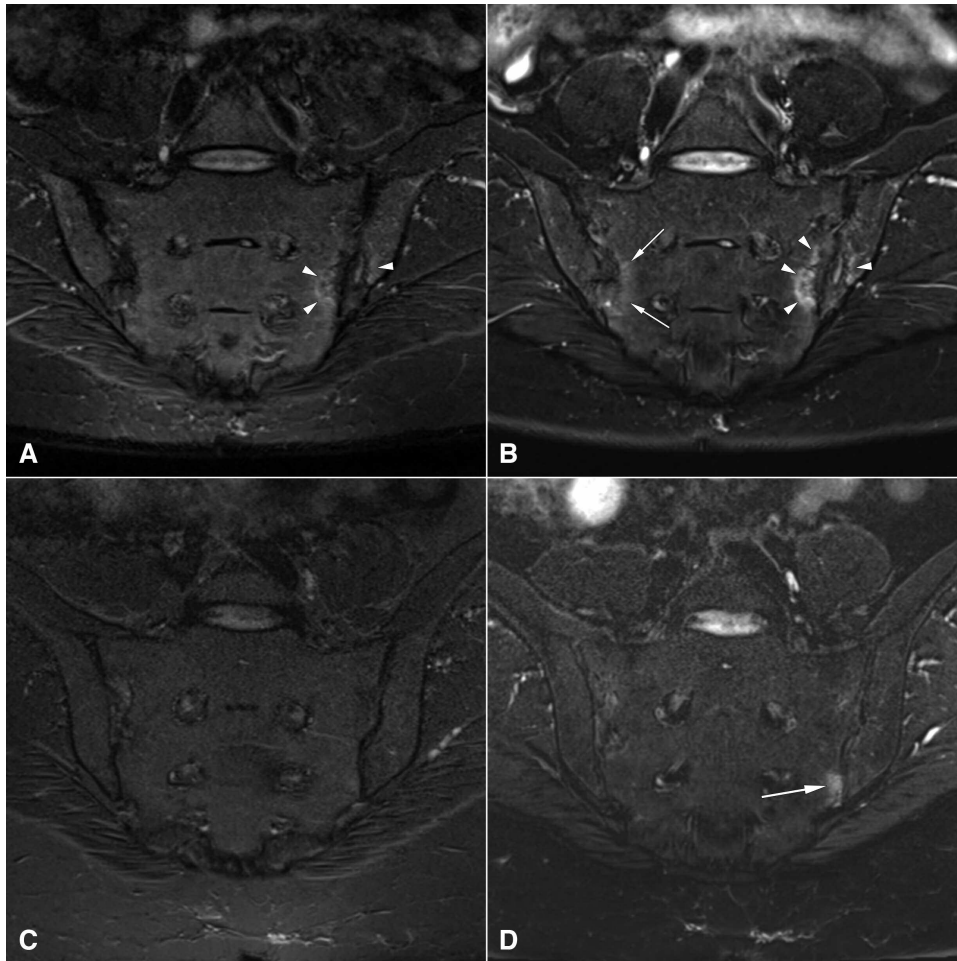
**Osteitis in healthy controls.** Regarding osteitis (minimum osteitis grade of 1 in at least 1 region, as detected by both readers), lesions were evident in 4 subjects in PD-STIR and in 9 subjects in T2-FS. However, an osteitis grade  $\geq 2$  as detected by both readers was not found in any of our healthy controls (Supplementary Table 2, available with the online version of this article).

**Interreader and intrareader results.** Interreader agreement was very good for the 2 sequences, with intraclass correlation coefficients of 0.91 for PD-STIR (95% CI: 0.82–0.95) and 0.86 for T2-FS (95% CI: 0.65–0.93). Intrareader agreement was excellent for both sequences with an average intraclass correlation coefficient value for PD-STIR of 0.96 and for T2-FS of 0.97.

**SNR and CNR.** Mean SNR for all inflammatory lesions on PD-STIR and T2-FS images was 16.54 and 37.30, respectively. Mean CNR was 4.14 and 20.20, respectively. SNR and CNR were significantly higher for the T2-FS sequence compared to the PD-STIR sequence (SNR:  $p = 0.0289$ , CNR:  $p = 0.0212$ ; Supplementary Figure 1, available with the online version of this article). Examples illustrating the different appearance of osteitis on T2-FS and PD-STIR images are presented in Figure 5.



**Figure 4.** Effects of PD-STIR and T2-FS sequence on ASAS classification. While 75 patients of this cohort could be classified as having axial spondyloarthritis (axSpA), taking into account clinical features including HLA-B27 testing, pelvic radiograph, and the PD-STIR sequence, 79 patients were classified as having axSpA when the PD-STIR sequence was exchanged by the T2-FS sequence. The number of patients classified by the clinical arm alone was reduced from 17 to 11. T2-FS: T2-weighted fat-suppressed turbo spin echo; PD-STIR: proton density–weighted short-tau recovery; ASAS: Assessment of SpondyloArthritis international Society.



**Figure 5.** Appearance of osteitis in PD-STIR and T2-FS images. Panels A and C show the coronal PD-STIR sequence; panels B and D show the coronal T2-FS sequence. Images illustrate different appearance of osteitis lesions. Upper row: osteitis present in both sequences at the left sacroiliac joint (arrowheads), additional visualization of osteitis at the right sacroiliac joint only in T2-FS sequence (arrows). Lower row: osteitis visualized at the left sacroiliac joint identified only with T2-FS sequence (arrow). The cartilage in the L5/S1 intervertebral disc appears much brighter on the T2-FS images (B and D), confirming the superiority of T2-FS for the detection of water-based signal compared to PD-STIR (A and C), independent of any pathological process. T2-FS: T2-weighted fat-suppressed turbo spin echo; PD-STIR: proton density–weighted short-tau inversion recovery.

## DISCUSSION

This prospective study is one of the first to compare and define the diagnostic value of a PD-STIR sequence and another MRI sequence using fat suppression (T2-FS sequence) in the context of detecting osteitis in a large group of patients with CLBP suspected of having sacroiliitis.

Our results show overall higher osteitis sum scores using the T2-FS sequence compared with the PD-STIR sequence. Moreover, the T2-FS sequence scoring resulted in more patients fulfilling the ASAS criteria of a positive MRI in the consensus of both readers. The same holds true when analyzing only unambiguous lesions (score of 2 or more per region).

We further analyzed whether the ASAS classification criteria for axSpA were fulfilled by clinical variables through the so-called “clinical arm” or by imaging findings on

radiographs or MRI using the “imaging arm.” While the overall difference was only 4 patients, which seems a rather small number, the use of the T2-FS sequence compared to the PD-STIR sequence resulted in a gain of 10 more patients that could be classified through the imaging arm. Further, the number of patients classified by the clinical arm alone was reduced from 17 to 11 patients.

Additionally, we compared the 2 MRI sequences on the background of the clinician’s diagnosis of axSpA or non-SpA. However, we could not use this as a primary outcome variable because we did not control the clinician’s knowledge of the imaging results. In this analysis, T2-FS resulted in a higher sensitivity (75.9% vs 56.9%) and specificity (44.2% vs 34.6%) for the diagnosis of axSpA. The rather low specificity values are explained by the inclusion criteria of the SIMACT cohort: patients did not necessarily



need to be active. Thus, it has to be clarified in future controlled studies whether the increase of sensitivity and specificity holds true also on the larger scale.

The T2-FS sequence resulted in significantly higher SNR and CNR, confirming an overall better image quality for the detection of osteitis lesions. Analysis of interreader and intrareader agreement yielded very good results as measured by intraclass correlation coefficient values. However, it must be noted that the interreader variance is in the range of the difference between PD-STIR and T2-FS osteitis sum scores. The results suggest that FS sequences, such as the T2-FS sequence used in our present study, have potential benefit in the diagnostic setup of patients suspected of having axSpA.

About 10–25% of patients diagnosed with nr-axSpA by their treating rheumatologist do not show structural lesions or subchondral bone marrow edema in the sacroiliac joints<sup>22</sup>. Why patients with a clinical diagnosis of axSpA can be negative on imaging continues to be a riddle. When STIR sequences of the SIJ were compared with histological investigations of biopsies from these joints, only 37.7% of those patients with AS who had histological inflammation were STIR-positive, while none of the STIR-positive patients had a negative histology<sup>23</sup>. Thus, the current MRI protocols with nearly exclusive use of the STIR sequence might have limited sensitivity for the detection of subchondral bone marrow inflammation. Our results support such an assumption and offer a more sensitive MRI method for the detection of subchondral osteitis by MRI.

However, it must be noted that edematous bone marrow lesions can also be induced mechanically and also occur in degenerative SIJ diseases such as OA or osteitis condensans ilii<sup>24</sup>. Besides, osteitis lesions in healthy controls have been described in several studies before<sup>25,26,27</sup>. Although osteitis lesions were also found in our healthy control group, these lesions were only low-grade, with scores not higher than 1. While the nature of these lesions remains unclear, subclinical mechanical stress might be one explanation.

Earlier studies aimed at identifying the most appropriate MRI sequence for the detection of inflammation in patients with axSpA rarely included the T2-FS sequence. To our knowledge, there is only 1 recent study comparing STIR with T2-FS in the context of axSpA<sup>28</sup>. In that study, Dalto, *et al* assessed agreement of STIR, T2w SPAIR (T2-weighted spectral attenuated inversion recovery sequence), and SPIR (spectral presaturation with inversion recovery) T1-weighted postcontrast sequences in a cohort of 76 patients with clinically confirmed SpA<sup>28</sup>. Results showed similar performance and high agreement of STIR and SPAIR sequences in osteitis detection. Comparison of STIR and T2-FS sequences was further done in the setting of other clinical indications (e.g., detection of bone contusions of the knee)<sup>29</sup>. Here, the authors found the image quality of the T2-FS sequence to be slightly superior to that of the STIR sequence.

Our study has some limitations. All MRI examinations

were performed at 3.0 Tesla. While this field strength is more and more introduced into diagnostic routine, most MRI examinations are still performed at 1.5 Tesla. Comparison of 1.5 and 3.0 Tesla systems was done regarding image quality and detection of bone marrow edema in patients with rheumatoid arthritis by T2-FS and T1-Gd sequences<sup>30</sup>. Image quality was better using the 3.0 Tesla system; however, image quality at 1.5 T was mostly regarded as excellent as well. The MR sequence measurements selected for our STIR sequence resulted in a PD-STIR sequence to allow for good anatomical detail visibility. Hence, there was no true T2 weighting. The inversion pulse inherent to all STIR sequences with the measurements used here may allow sensitive visualization of fluid; however, the potential for inadequate T2 weighting in the spine with STIR is not widely known or understood. Another limitation of our study is the absence of a gold standard for the detection of inflammatory SIJ lesions. However, this limitation applies to many imaging studies in the field of rheumatology because biopsies are rarely available, for a variety of reasons. Our MRI protocol did not include a T1/Gd sequence because several studies already compared T1/Gd and STIR sequences<sup>11,13,14,31</sup>. Also, complete blinding to all factors during the reading sessions was not possible because PD-STIR and T2-FS images have a slightly different appearance and readers might have been aware which MR pulse sequence they were reading. However, at no time during evaluation were readers able to compare PD-STIR and T2-FS images side by side.

The use of the T2-FS sequence improves image quality and detection of osteitis compared to a proton density-weighted STIR sequence. More patients were classified as having axSpA based on a positive MRI by T2-FS. Further studies are warranted to evaluate the sensitivity and specificity of this pulse sequence for diagnosis and classification in greater detail. Nonetheless, it should be noted that adequately T2-weighted STIR sequences are still a robust method for osteitis detection.

## ACKNOWLEDGMENT

The authors thank Bettina Herwig for language editing and Nikolay N. Tonkoff for graphic support with Figure 1.

## ONLINE SUPPLEMENT

Supplementary material accompanies the online version of this article.

## REFERENCES

1. Rudwaleit M, Van der Heijde D, Khan M, Braun J, Sieper J. How to diagnose axial spondyloarthritis early. *Ann Rheum Dis* 2004;63:535-43.
2. Braun J, Bollow M, Remlinger G, Eggens U, Rudwaleit M, Distler A, et al. Prevalence of spondylarthropathies in HLA-B27 positive and negative blood donors. *Arthritis Rheum* 1998;41:58-67.
3. Rudwaleit M, van der Heijde D, Landewe R, Listing J, Akkoc N, Brandt J, et al. The development of Assessment of SpondyloArthritis international Society classification criteria for axial spondyloarthritis (part II): validation and final selection. *Ann Rheum Dis* 2009;68:777-83.

4. Braun J, Sieper J. Ankylosing spondylitis. *Lancet* 2007; 369:1379-90.
5. Rudwaleit M, Landewe R, van der Heijde D, Listing J, Brandt J, Braun J, et al. The development of Assessment of SpondyloArthritis international Society classification criteria for axial spondyloarthritis (part I): classification of paper patients by expert opinion including uncertainty appraisal. *Ann Rheum Dis* 2009;68:770-6.
6. Rudwaleit M, Jurik AG, Hermann KG, Landewe R, van der Heijde D, Baraliakos X, et al. Defining active sacroiliitis on magnetic resonance imaging (MRI) for classification of axial spondyloarthritis: a consensual approach by the ASAS/OMERACT MRI group. *Ann Rheum Dis* 2009;68:1520-7.
7. Lambert RG, Bakker PA, van der Heijde D, Weber U, Rudwaleit M, Hermann KG, et al. Defining active sacroiliitis on MRI for classification of axial spondyloarthritis: update by the ASAS MRI working group. *Ann Rheum Dis* 2016;75:1958-63.
8. Mandl P, Navarro-Compán V, Terslev L, Aegerter P, van der Heijde D, D'Agostino M, et al. EULAR recommendations for the use of imaging in the diagnosis and management of spondyloarthritis in clinical practice. *Ann Rheum Dis* 2015;74:1327-39.
9. Bollow M, Fischer T, Reisschauer H, Backhaus M, Sieper J, Hamm B, et al. Quantitative analyses of sacroiliac biopsies in spondyloarthropathies: T cells and macrophages predominate in early and active sacroiliitis- cellularity correlates with the degree of enhancement detected by magnetic resonance imaging. *Ann Rheum Dis* 2000;59:135-40.
10. Hermann KG, Braun J, Fischer T, Reisschauer H, Bollow M. Magnetic resonance imaging of sacroiliitis: anatomy, histological pathology, MR-morphology, and grading. *Radiologe* 2004; 44:217-28.
11. Hermann K-GA, Landewé RB, Braun J, van der Heijde DM. Magnetic resonance imaging of inflammatory lesions in the spine in ankylosing spondylitis clinical trials: is paramagnetic contrast medium necessary? *J Rheumatol* 2005;32:2056-60.
12. Guglielmi G, Scalzo G, Cascavilla A, Carotti M, Salaffi F, Grassi W. Imaging of the sacroiliac joint involvement in seronegative spondylarthropathies. *Clin Rheumatol* 2009;28:1007-19.
13. Althoff CE, Feist E, Burova E, Eshed I, Bollow M, Hamm B, et al. Magnetic resonance imaging of active sacroiliitis: do we really need gadolinium? *Eur J Radiol* 2009;71:232-6.
14. Baraliakos X, Hermann KA, Landewe R, Listing J, Golder W, Brandt J, et al. Assessment of acute spinal inflammation in patients with ankylosing spondylitis by magnetic resonance imaging: a comparison between contrast enhanced T1 and short tau inversion recovery (STIR) sequences. *Ann Rheum Dis* 2005;64:1141-4.
15. Mirowitz SA, Apicella P, Reinus WR, Hammerman AM. MR imaging of bone marrow lesions: relative conspicuousness on T1-weighted, fat-suppressed T2-weighted, and STIR images. *AJR Am J Roentgenol* 1994;162:215-21.
16. McMahon KL, Cowin G, Galloway G. Magnetic resonance imaging: the underlying principles. *J Orthop Sports Phys Ther* 2011;41:806-19.
17. Del Grande F, Santini F, Herzka DA, Aro MR, Dean CW, Gold GE, et al. Fat-suppression techniques for 3-T MR imaging of the musculoskeletal system. *Radiographics* 2014;34:217-33.
18. Delfaut EM, Beltran J, Johnson G, Rousseau J, Marchandise X, Cotten A. Fat suppression in MR imaging: techniques and pitfalls. *Radiographics* 1999;19:373-82.
19. Diekhoff T, Hermann K-GA, Greese J, Schwenke C, Poddubnyy D, Hamm B, et al. Comparison of MRI with radiography for detecting structural lesions of the sacroiliac joint using CT as standard of reference: results from the SIMACT study. *Ann Rheum Dis* 2017;76:1502-8.
20. van den Berg R, de Hooge M, Rudwaleit M, Sieper J, van Gaalen F, Reijnierse M, et al. ASAS modification of the Berlin algorithm for diagnosing axial spondyloarthritis: results from the SpondyloArthritis Caught Early (SPACE)-cohort and from the Assessment of SpondyloArthritis international Society (ASAS)-cohort. *Ann Rheum Dis* 2013;72:1646-53.
21. Eshed I, Althoff CE, Schink T, Scheel AK, Schirmer C, Backhaus M, et al. Low-field MRI for assessing synovitis in patients with rheumatoid arthritis. Impact of Gd-DTPA dose on synovitis scoring. *Scand J Rheumatol* 2006;35:277-82.
22. Sieper J, van der Heijde D. Review: Nonradiographic axial spondyloarthritis: new definition of an old disease? *Arthritis Rheum* 2013;65:543-51.
23. Gong Y, Zheng N, Chen SB, Xiao ZY, Wu MY, Liu Y, et al. Ten years' experience with needle biopsy in the early diagnosis of sacroiliitis. *Arthritis Rheum* 2012;64:1399-406.
24. Arnbak B, Jensen TS, Egund N, Zejden A, Horslev-Petersen K, Manniche C, et al. Prevalence of degenerative and spondyloarthritis-related magnetic resonance imaging findings in the spine and sacroiliac joints in patients with persistent low back pain. *Eur Radiol* 2016;26:1191-203.
25. Weber U, Lambert RG, Ostergaard M, Hodler J, Pedersen SJ, Maksymowych WP. The diagnostic utility of magnetic resonance imaging in spondylarthritis: an international multicenter evaluation of one hundred eighty-seven subjects. *Arthritis Rheum* 2010;62:3048-58.
26. Weber U, Hodler J, Kubik RA, Rufibach K, Lambert RG, Kissling RO, et al. Sensitivity and specificity of spinal inflammatory lesions assessed by whole-body magnetic resonance imaging in patients with ankylosing spondylitis or recent-onset inflammatory back pain. *Arthritis Rheum* 2009;61:900-8.
27. Marzo-Ortega H, McGonagle D, O'Connor P, Hensor EM, Bennett AN, Green MJ, et al. Baseline and 1-year magnetic resonance imaging of the sacroiliac joint and lumbar spine in very early inflammatory back pain. Relationship between symptoms, HLA-B27 and disease extent and persistence. *Ann Rheum Dis* 2009;68:1721-7.
28. Dalto VF, Assad RL, Crema MD, Louzada-Junior P, Nogueira-Barbosa MH. MRI assessment of bone marrow oedema in the sacroiliac joints of patients with spondyloarthritis: is the SPAIR T2w technique comparable to STIR? *Eur Radiol* 2017;27:3669-76.
29. Arndt 3rd W, Truax A, Barnett F, Simmons G, Brown D. MR diagnosis of bone contusions of the knee: comparison of coronal T2-weighted fast spin-echo with fat saturation and fast spin-echo STIR images with conventional STIR images. *AJR Am J Roentgenol* 1996;166:119-24.
30. Wieners G, Detert J, Streitparth F, Pech M, Fischbach F, Burmester G, et al. High-resolution MRI of the wrist and finger joints in patients with rheumatoid arthritis: comparison of 1.5 Tesla and 3.0 Tesla. *Eur Radiol* 2007;17:2176-82.
31. Sung S, Kim HS, Kwon JW. MRI assessment of sacroiliitis for the diagnosis of axial spondyloarthropathy: comparison of fat-saturated T2, STIR and contrast-enhanced sequences. *Br J Radiol* 2017;90:20170090.