

Clinical Profiles and Prognosis of Patients with Distinct Antisynthetase Autoantibodies

Jingli Shi, Shanshan Li, Hanbo Yang, Yamei Zhang, Qinglin Peng, Xin Lu, and Guochun Wang

ABSTRACT. Objective. To compare the clinical characteristics and identify the longterm outcomes of Chinese patients with different antisynthetase antibodies.

Methods. We investigated retrospectively 124 consecutive patients with antisynthetase syndrome. Medical records, laboratory results, and computed tomography images were obtained.

Results. The antisynthetase antibodies we investigated were anti-Jo1 (n = 62), anti-PL7 (n = 31), anti-PL12 (n = 12), and anti-EJ (n = 19). The overall prevalence of interstitial lung disease (ILD) reached 94.4% among study patients. Eleven patients (8.9%) developed rapidly progressive ILD (RP-ILD). Eight patients (6.5%) experienced malignancy. RP-ILD was statistically more prevalent in patients with antisynthetase syndrome with anti-PL7 than those without anti-PL7 (p = 0.028). Anti-Ro52–positive patients with antisynthetase syndrome experienced higher frequency of RP-ILD than those without anti-Ro52 (p = 0.001). Further, anti-PL7–positive patients coexisting with anti-Ro52 exhibited more RP-ILD than those without anti-Ro52 (p = 0.001). Patients with antisynthetase syndrome with RP-ILD had a higher proportion of neutrophils in bronchoalveolar lavage fluid and serum ferritin than those without RP-ILD (p = 0.006 and p = 0.013, respectively). Although no differences were observed between the Kaplan-Meier curves of the 4 antisynthetase antibodies subgroups (p = 0.349), the survival rate of patients with anti-PL7 decreased more rapidly in the early stage of longterm followup compared with those with other antisynthetase antibodies. The presence of RP-ILD, malignancy, and elevated serum ferritin was identified to be associated with poor prognosis in patients with antisynthetase syndrome.

Conclusion. Our study investigates the clinical phenotypes and outcomes of patients with antisynthetase syndrome with distinct antisynthetase antibodies and highlights the link between the anti-PL7 antibody and RP-ILD. (First Release May 1 2017; J Rheumatol 2017;44:1051–7; doi:10.3899/jrheum.161480)

Key Indexing Terms:

ANTI-tRNA SYNTHETASE ANTIBODY

RAPIDLY PROGRESSIVE INTERSTITIAL LUNG DISEASE

ANTI-Ro52 ANTIBODY

PROGNOSTIC FACTORS

Antisynthetase syndrome is characterized by the presence of anti-aminoacyl-tRNA synthetase antibodies, inflammatory myositis, interstitial lung disease (ILD), arthritis, fever, mechanic's hands, and Raynaud phenomenon (RP). As a hallmark of antisynthetase syndrome, antisynthetase

antibodies occur in 15% to 30% of patients with myositis^{1,2}. Anti-Jo1 (anti-histidyl) occurs most frequently in 60%–80% of patients with antisynthetase syndrome. Less frequent antisynthetase antibodies are now routinely detected in clinical practice, being reported in about 5% of patients with antisynthetase syndrome^{2,3,4}, such as anti-PL7 (antianalyl), anti-PL12 (antithreonyl), anti-EJ (antiglycyl), and anti-OJ (anti-isoleucyl). Some antisynthetase antibodies rarely found in patients with myositis are anti-KS (antiasparaginy), anti-Zo (antiphenylalanyl), anti-SC (antilyl), anti-JS (antiglutamyl), and anti-YRS (antityrosyl). Although patients with antisynthetase antibodies share many common clinical features, several investigators have reported on the heterogeneity of antisynthetase syndrome^{5,6,7}.

Antisynthetase syndrome is also an overlapping myositis, often presenting with Sjögren symptoms. The autoantibodies of Sjögren symptoms, including anti-Ro60/52kDa and anti-La/SSB, were commonly observed in antisynthetase syndrome. Anti-Ro52 autoantibody can be detected in 59% of patients with antisynthetase syndrome in a previous report⁸. Moreover, anti-Ro52 has been shown to participate in the pathogenesis of myositis⁹ and associated closely with pulmonary manifestations¹⁰. Previous studies also observed

From the Peking University China-Japan Friendship School of Clinical Medicine; Department of Rheumatology, China-Japan Friendship Hospital, Beijing, China.

Supported by the National Natural Science Foundation of China (91542121, 81571603), the Capital Foundation of Medical Developments (No: 2016-2-4063), and the Science and Technology Commission Foundation of Beijing (Z151100004015143).

J. Shi, PhD, Peking University China-Japan Friendship School of Clinical Medicine; S. Li, PhD, Department of Rheumatology, China-Japan Friendship Hospital; H. Yang, PhD, Department of Rheumatology, China-Japan Friendship Hospital; Y. Zhang, MD, Peking University China-Japan Friendship School of Clinical Medicine; Q. Peng, PhD, Department of Rheumatology, China-Japan Friendship Hospital; X. Lu, PhD, Department of Rheumatology, China-Japan Friendship Hospital; G. Wang, PhD, Peking University China-Japan Friendship School of Clinical Medicine, and Department of Rheumatology, China-Japan Friendship Hospital.

Address correspondence to Dr. G. Wang, Department of Rheumatology, China-Japan Friendship Hospital, Beijing 100029, China.

E-mail: guochunwang@hotmail.com

Accepted for publication March 23, 2017.

Personal non-commercial use only. The Journal of Rheumatology Copyright © 2017. All rights reserved.

that the presence of anti-Ro52 causes more severe ILD in anti-Jo1-positive patients^{11,12,13,14}.

We conducted this study to determine the differences between the clinical manifestations and the longterm outcomes of Chinese patients with distinct antisynthetase antibodies.

MATERIALS AND METHODS

Patients. Our study involved patients with antisynthetase syndrome referred to the Rheumatology Department of the China-Japan Friendship Hospital from January 1994 to September 2016. All patients' data were used anonymously. This study was approved by the Research Review Committee and the Ethical Review Committee of the China-Japan Friendship Hospital (approval number 2013-6).

Data collection. Clinical data and laboratory results were obtained retrospectively from medical records. The data obtained were age of onset, sex, duration, presence or absence of muscle weakness, myalgia, dysphagia, ILD, rapidly progressive ILD (RP-ILD), mechanic's hands, RP, Gottron papules, heliotrope rash, arthritis/arthralgia, malignancy, and pericarditis. Laboratory test results were recorded. Survival status was confirmed by telephone or hospital records.

Definition. Idiopathic inflammatory myopathy (IIM) was defined by a clinical presentation with skeletal muscle weakness, elevated serum levels of muscle enzymes, and electromyography together with characteristic histopathological changes on muscle biopsy¹⁵. Diagnosis of antisynthetase syndrome was based on criteria proposed by Solomon, *et al*¹⁶. The presence of ILD was evaluated by computed tomography (CT) and abnormal pulmonary function test¹⁷. CT scan patterns were classified as usual interstitial pneumonia (UIP), nonspecific interstitial pneumonia (NSIP), and organizing pneumonia (OP) by 2 experienced radiologists. RP-ILD was defined as a worsening of radiologic interstitial changes with progressive dyspnea and hypoxemia within 3 months after the onset of respiratory symptoms¹⁸. Pericardial effusion was assessed by CT and/or echocardiography examination.

Antisynthetase antibodies analysis. The antisynthetase antibodies were identified using EUROIMMUN immunoblot according to the manufacturer's instructions, including the anti-Jo1, anti-PL7, anti-PL12, anti-EJ, and anti-OJ antibodies. The results were considered positive if the bands showed moderate or strong reaction.

Statistical analysis. Statistical analysis was performed using SPSS software version 21.0. Chi-square and Fisher's exact tests were used to compare the frequencies of the antisynthetase antibodies subgroups. Comparisons involving continuous variables among groups were performed using ANOVA. Pairwise comparisons were carried out if the overall p value was < 0.05. Survival curves were drawn using the Kaplan-Meier method. The log-rank test was used to compare survival rates. Cox proportional hazards regression analysis was used to assess prognostic factors. Results were regarded as significant when p values were < 0.05.

RESULTS

Prevalence of antisynthetase antibodies. Of 639 patients with IIM, 124 antisynthetase antibodies-positive patients (19.4%) were identified. Among the 124 patients with antisynthetase syndrome, 62 patients (50.0%) were anti-Jo1-positive, 31 (25.0%) were anti-PL7-positive, 12 (9.7%) were anti-PL12-positive, and 19 (15.3%) were anti-EJ-positive. Interestingly, we found anti-SRP and anti-MDA5 antibodies in 2 patients with antisynthetase syndrome with anti-Jo1. To avoid the bias resulting from other myositis-specific antibodies, we excluded those 2 patients.

Demographic features. The general clinical characteristics and comparisons between the 4 groups are shown in Table 1.

The mean followup time was 47.6 ± 45.9 months. The mean age at onset was 50.4 ± 11.8 years. The majority of patients were women (M:F = 15:47). The mean duration of disease was 12.9 ± 31.2 months. No differences were observed between the demographic features of the 4 groups.

Comparisons of clinical characteristics. As the most common manifestation of antisynthetase syndrome, the frequency of ILD reached 94.4% in our cohort. Among the patients with ILD, 11 (8.9%) were identified with RP-ILD. Muscle weakness was present in 63.7% of patients, followed by arthritis/arthralgia in 54.0%, mechanic's hands in 46.0%, Gottron papules in 44.4%, myalgia in 36.3%, heliotrope rash in 21.8%, dysphagia in 11.3%, pericarditis in 10.5%, and RP in 9.7%. There were statistical differences in the frequencies of heliotrope rash and arthritis/arthralgia among the 4 subgroups (overall p = 0.001 for both characteristics). Patients with anti-PL7 had a higher frequency of heliotrope rash than those with anti-Jo1 or anti-EJ (p < 0.001 and p = 0.02, respectively). Arthritis/arthralgia was more frequently observed in patients with anti-Jo1 than those with anti-PL7 and anti-EJ (p = 0.007 and p = 0.001, respectively).

Notably, 6 of the 31 patients with anti-PL7 developed RP-ILD, but there was no significant difference between the 4 groups in frequency of RP-ILD (overall p = 0.127). However, RP-ILD was statistically more prevalent in patients with antisynthetase syndrome with anti-PL7 than those without anti-PL7 (p = 0.028). The frequencies of the other clinical characteristics varied among the subgroups, but no significant differences were observed.

Complications of malignancy. During the followup period, 8 patients (6.5%) developed malignancies. The malignancies involved the breast (n = 3), stomach (n = 1), cervix (n = 1), nasopharynx (n = 1), salivary duct (n = 1), and thyroid (n = 1) of the patients.

Three patients suffered from malignancy within 3 years prior to IIM diagnosis and 1 patient experienced malignancy within 3 years after IIM diagnosis. The interval time of malignancy and IIM was more than 3 years in the remaining 4 patients. Seven of 8 patients also experienced ILD. The patient with salivary duct carcinoma suffered from RP-ILD.

Prevalence of myositis-associated antibodies. Antinuclear antibodies (ANA), anti-Ro60, anti-Ro52, and anti-RNP antibodies were found in 55.6%, 30.6%, 29.0%, and 4.0% of patients with antisynthetase syndrome, respectively. Differences were observed in the occurrence of ANA and anti-Ro52 among the subgroups (overall p = 0.001 and p < 0.000, respectively). Intragroup comparisons showed that patients with anti-Jo1 were less likely to have ANA and anti-Ro52 antibodies than patients with anti-PL7, anti-PL12, and anti-EJ (all p < 0.05). Of note, RP-ILD was more frequently observed in patients with antisynthetase syndrome with anti-Ro52 than those without anti-Ro52 (p = 0.001). Further, anti-PL7-positive patients with anti-Ro52 experienced more RP-ILD than those without anti-Ro52 (p = 0.001). But there

Table 1. Comparisons of clinical characteristics in antisynthetase antibody–positive patients with idiopathic inflammatory myopathy. Pairwise comparisons were further analyzed when overall p value was < 0.05. Data are presented as n (%) or mean ± SD.

Variables	Overall, n = 124	Jo1, n = 62	PL7, n = 31	PL12, n = 12	EJ, n = 19	p
Mean age at onset, yrs	50.4 ± 11.8	49.9 ± 10.4	51.7 ± 12.5	54 ± 12.6	47.6 ± 14.5	0.459
Female	94 (75.8)	44 (71)	25 (80.6)	9 (75)	16 (84.2)	0.648
Duration, mos	12.9 ± 31.2	11.3 ± 30.9	14.0 ± 15.9	15.9 ± 33.5	14.2 ± 27.4	0.952
Clinical characteristics						
Muscle weakness	79 (63.7)	39 (62.9)	22 (71)	8 (66.7)	10 (52.6)	0.635
Myalgia	45 (36.3)	22 (35.5)	12 (38.7)	3 (25)	8 (42.1)	0.829
ILD	117 (94.4)	60 (96.8)	26 (83.9)	12 (100)	19 (100)	0.053
RP-ILD	11 (8.9)	3 (4.8)	6 (19.4)	1 (8.3)	1 (5.3)	0.127
Mechanic's hands	57 (46.0)	29 (46.8)	14 (45.2)	5 (41.7)	9 (47.4)	0.992
Raynaud phenomenon	12 (9.7)	8 (12.9)	1 (3.2)	2 (16.7)	1 (5.3)	0.351
Gotttron papules	55 (44.4)	26 (41.9)	15 (48.4)	8 (66.7)	6 (31.6)	0.265
Heliotrope rash	27 (21.8)	7 (11.3)	15 (48.4)	2 (16.7)	3 (15.8)	0.001 ^a
Arthritis/arthralgia	67 (54.0)	44 (71)	13 (41.9)	5 (41.7)	5 (26.3)	0.001 ^b
Dysphagia	14 (11.3)	5 (8.1)	6 (19.4)	1 (8.3)	2 (10.5)	0.449
Malignancy	8 (6.5)	4 (6.5)	2 (6.5)	1 (8.3)	1 (5.3)	1.000
Pericarditis	13 (10.5)	3 (4.8)	6 (19.4)	2 (16.7)	2 (10.5)	0.100
ANA	69 (55.6)	24 (38.7)	20 (64.5)	10 (83.3)	15 (78.9)	0.001 ^c
Anti-Ro52	36 (29.0)	6 (9.7)	12 (38.7)	8 (66.7)	10 (52.6)	< 0.0001 ^c
Anti-Ro60	38 (30.6)	24 (38.7)	7 (22.6)	1 (8.3)	6 (31.6)	0.129
Anti-RNP	5 (4.0)	3 (4.8)	1 (3.2)	0	1 (5.3)	1.000
With other CTD	23 (18.5)	13 (21)	4 (12.9)	2 (16.7)	4 (21.1)	0.830
CK, IU/l	811.7 ± 1473.6	732.6 ± 1183.7	1061.8 ± 2203.2	172.9 ± 259.2	1070.1 ± 1246.8	0.277
CRP, mg/dl	2.3 ± 4.1	1.8 ± 3.2	3.4 ± 6.5	2.9 ± 2.7	1.8 ± 2.6	0.361
Serum ferritin, ng/ml	448.6 ± 710.4	428.7 ± 856.8	491.8 ± 637.3	629 ± 592.9	308.2 ± 338.6	0.849
Lymphocyte, cell	1584 ± 10,006	1708 ± 1068	1509 ± 1076	1238 ± 650	1625 ± 936	0.559
CD3+, cell/ul	1120 ± 755	1197 ± 849	1118 ± 780	893 ± 554	1062 ± 539	0.677
CD3+CD4+, cell/ul	654 ± 414	691 ± 359	685 ± 509	560 ± 385	588 ± 290	0.593
CD3+CD8+, cell/ul	433 ± 386	468 ± 479	403 ± 288	403 ± 288	475 ± 330	0.610
B1, %	4.1 ± 3.9	3.9 ± 3.5	4 ± 4.5	3 ± 2.5	5.4 ± 4.2	0.531
B2, %	11.2 ± 8.3	10.6 ± 7.4	12 ± 9.4	14.7 ± 12.5	8.6 ± 4.7	0.291

^a p < 0.05 between anti-PL7 and anti-Jo1 or anti-EJ. ^b p < 0.05 between anti-Jo1 and anti-PL7 or anti-EJ. ^c p < 0.05 between anti-Jo1 and anti-PL7, anti-PL12, or anti-EJ. ILD: interstitial lung disease; RP-ILD: rapidly progressive ILD; ANA: antinuclear antibodies; CTD: connective tissue disease; CK: creatine kinase; CRP: C-reactive protein; B1: lymphocyte subset 1; B2: lymphocyte subset 2.

was no significant difference in RP-ILD occurrence related to the presence or absence of anti-Jo1, anti-PL7, and anti-EJ. No difference was found in the prevalence of malignancy in patients with antisynthetase syndrome with anti-Ro52 compared with those without anti-Ro52 (p = 0.436).

Laboratory results. No differences were found in the serum ferritin, creatine kinase, C-reactive protein, and lymphocyte subset levels among the subgroups, but the overall mean serum ferritin level was higher than normal (11–306.8 ng/ml). The increase in the lymphocyte subset 1 (B1) and B2 cells was observed in all subgroups.

Comparisons of ILD features between antisynthetase antibodies subgroups. The median values of DLCO of patients with anti-Jo1, anti-PL7, anti-PL12, and anti-EJ were 55.5%, 53.7%, 42.5%, and 52.5%, respectively. Median values of forced vital capacity (FVC) of patients with anti-Jo1, anti-PL7, anti-PL12, and anti-EJ were 75.7%, 81.2%, 68.3%, and 75.0%, respectively. There were no differences in DLCO and FVC between the subgroups (p = 0.402 and p = 0.247, respectively). According to the patterns displayed on

pulmonary CT scans, patients were divided into 3 groups: NSIP (n = 58), OP (n = 18), and UIP (n = 4). Obviously, the predominant CT pattern of ILD in patients with antisynthetase syndrome was NSIP (72.5%). No differences were found in the prevalence of these 3 CT patterns between the 4 groups.

Clinical features of patients with antisynthetase syndrome with RP-ILD. The distributions of different antisynthetase antibodies in patients with antisynthetase syndrome complicated with RP-ILD are shown in Table 2. More than half of the patients with antisynthetase syndrome with RP-ILD (6/11) were anti-PL7–positive. Nine patients received methylprednisolone pulse treatment, 8 received cyclophosphamide (CYC), and 7 received intravenous immunoglobulin. Six patients showed no response to therapy and died of respiratory failure. Of the 11 patients with antisynthetase syndrome who developed RP-ILD, the male:female ratio was 3:8. Notably, the 3 male patients with RP-ILD all had poor prognosis and 5 of 8 female patients experienced gradual improvement. Patients with antisynthetase syndrome with RP-ILD had higher proportions of neutrophils in their bronchoalveolar

Table 2. Characteristics of the 11 patients with antisynthetase syndrome complicated with rapidly progressive interstitial lung disease.

Patient	Age, Yrs/ sex	Antisynthetase		BALF Findings, %			Serum Ferritin, ng/ml	Anti-Ro52 Antibody	CT Scan Pattern	Outcomes
		Antibodies	Lymphocytes	Neutrophils	Macrophagocytes					
1	64/F	Jo1	6.8	81.2	6.5	208.8	–	NSIP	Improved in 1 mo	
2	70/M	Jo1	ND	ND	ND	ND	–	UIP	Died	
3	67/F	Jo1	ND	ND	ND	ND	–	OP	Died	
4	28/F	PL7	1.0	63.5	31.5	169.1	+	OP	Improved in 2 mos	
5	56/M	PL7	9.5	57.8	31.7	2000.0	+	ND	Died	
6	48/F	PL7	6.5	69.7	20.5	933.5	+	NSIP	Died	
7	69/M	PL7	0	96.3	3.7	1716.0	+	NSIP	Died	
8	32/F	PL7	73	7.8	7.5	77.5	+	OP	Improved in 2 mos	
9	74/F	PL7	ND	ND	ND	ND	+	NSIP	Died	
10	48/F	PL12	ND	ND	ND	1510.0	+	OP	Improved in 10 days	
11	44/F	EJ	0.3	92.5	7.2	1138.2	+	NSIP	Improved in 2 mos	

BALF: bronchoalveolar lavage fluid; CT: computed tomography; NSIP: nonspecific interstitial pneumonia; UIP: usual interstitial pneumonia; OP: organizing pneumonia; ND: no data.

lavage fluid than those without RP-ILD (66.9% vs 29.1%, $p = 0.006$). The mean value of serum ferritin levels in patients with antisynthetase syndrome with RP-ILD was significantly higher than those without RP-ILD (1003.9 ng/ml vs 372.9 ng/ml, $p = 0.013$). Interestingly, the non-Jo1-positive patients with RP-ILD were all anti-Ro52 antibody-positive. CT patterns did not differ between RP-ILD and chronic ILD in patients with antisynthetase syndrome.

Survival analysis. The followup duration ranged from 1 month to 249 months. The median followup time was 32.5 months. The cumulative 10-year survival rate of the cohort overall was 76.8%. The 1-year survival rates of patients with anti-Jo1, anti-PL7, anti-PL12, and anti-EJ were 96.5%, 86.4%, 90.9%, and 100%, respectively. The 5-year survival rates of patients with anti-Jo1, anti-PL7, anti-PL12, and anti-EJ were 86.0%, 81.6%, 90.9%, and 100%, respectively. The 10-year survival rates of patients with anti-Jo1, anti-PL7, anti-PL12, and anti-EJ were 64.5%, 69.9%, 90.9%, and 100%, respectively. Obviously, patients with anti-PL7 had the highest mortality within the first year of onset. The comparison of the Kaplan-Meier curves between the 4 antisynthetase antibodies subgroups, calculated by using the log-rank test, did not significantly differ ($p = 0.349$; Figure 1).

Prognostic factors. To identify indicators of poor outcomes in patients with antisynthetase syndrome, multivariate Cox regression analysis was performed. The results of univariate analysis revealed that older age, presence of RP-ILD, malignancy, and elevated serum ferritin were significantly associated with poor outcomes in patients with antisynthetase syndrome ($p = 0.005$, $p < 0.001$, $p = 0.001$, and $p = 0.018$, respectively). The above factors were included in a multivariate analysis to identify prognostic factors. As shown in Table 3, RP-ILD, malignancy, and elevated serum ferritin were independent risk factors for poor prognosis in patients with antisynthetase syndrome. The 4 different antisynthetase antibodies were not predictive factors in the long term (all $p > 0.05$).

DISCUSSION

In our study, we compared the differences of patients with IIM with distinct antisynthetase antibodies in terms of clinical, serological, and radiological aspects, and the analysis especially focused on the association between antisynthetase antibodies and ILD. Further, longterm outcomes and prognostic factors were identified in patients with antisynthetase syndrome.

The presence of ILD usually contributes to mortality and morbidity in patients with myositis. In our cohort, the overall prevalence of ILD was 94.4% and even reached 100% in patients with anti-PL12 and anti-EJ antibodies, higher than published reports^{5,19,20}. Similarly to other ethnic groups^{21,22}, no differences were detected in pulmonary function variables and ILD pattern based on antisynthetase antibodies subtype.

The main cause of mortality in our cohort was ILD-associated respiratory failure, particularly respiratory failure associated with RP-ILD. Several published reports have stated that severe acute lung injury occurs in patients with anti-Jo1^{23,24,25}. It also has been described that anti-PL7 and anti-PL12 are closely associated with severe ILD^{26,27,28,29}. In our cohort, patients with antisynthetase syndrome with anti-Jo1 and anti-PL12 did not experience more RP-ILD than other patients with antisynthetase syndrome. In contrast, patients with anti-PL7-positive antibodies have markedly higher incidence of RP-ILD compared with patients with antisynthetase syndrome without anti-PL7. Our study shows that anti-PL7-positive patients have higher mortality rates in the early stages of survival curves in comparison with other patients with antisynthetase syndrome. In accordance with a previous study⁵, heliotrope rash was more prevalent in anti-PL7-positive patients than other clinical manifestations. Labirua-Iturburu, *et al* found that anti-PL7 was related to pericarditis³⁰; the high prevalence of pericarditis is also observed in our cohort. These findings may indicate that patients with anti-PL7 exhibit a distinct clinical phenotype.

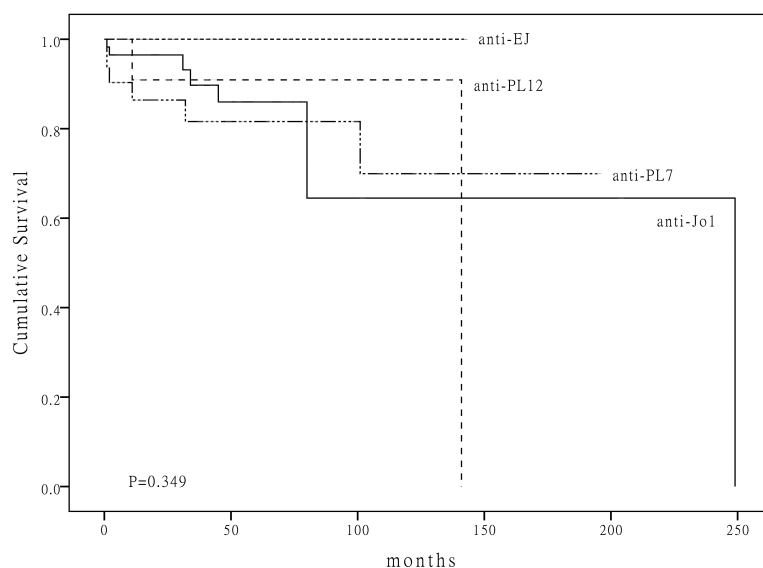


Figure 1. Survival curves in patients with polymyositis/dermatomyositis with 4 different antisynthetase antibodies.

Table 3. Multivariate Cox regression analysis of prognostic factors in patients with antisynthetase syndrome.

Variable	Univariate Analysis		Multivariate Analysis	
	HR (95% CI)	p	HR (95% CI)	p
Age, yrs	1.075 (1.022–1.131)	0.005		
Sex	0.388 (0.124–1.208)	0.102		
Duration	0.986 (0.961–1.012)	0.302		
Muscle weakness	0.678 (0.233–1.971)	0.476		
Myalgia	0.366 (0.101–1.325)	0.126		
ILD	21.7 (0.0–1495375.1)	0.588		
RP-ILD	13.8 (4.459–42.945)	< 0.001	8.072 (1.280–50.923)	0.026
Mechanic's hands	0.572 (0.178–1.837)	0.348		
Raynaud phenomenon	1.375 (0.298–6.347)	0.683		
Gottron papules	0.949 (0.329–2.737)	0.923		
Heliotrope rash	0.959 (0.266–3.450)	0.948		
Arthritis/arthralgia	0.775 (0.272–2.212)	0.634		
Dysphagia	1.079 (0.240–4.841)	0.921		
Malignancy	8.433 (2.462–28.879)	0.001	31.07 (2.182–442.36)	0.011
Pericarditis	2.762 (0.763–9.997)	0.122		
ANA	1.187 (0.410–3.436)	0.751		
Anti-Ro52	2.487 (0.852–7.264)	0.096		
Anti-Ro60	0.350 (0.078–1.571)	0.170		
Anti-RNP	0.045 (0.0–1713.71)	0.564		
With other CTD	0.512 (0.112–2.333)	0.387		
Jo1	1.015 (0.343–2.998)	0.979		
PL7	1.755 (0.599–5.143)	0.305		
PL12	1.425 (0.317–6.403)	0.644		
EJ	0.037 (0.000–16.479)	0.290		
Serum ferritin	1.001 (1.000–1.001)	0.018	1.001 (1.000–1.002)	0.042
CK	0.999 (0.998–1.000)	0.230		
CRP	0.458 (0.121–1.730)	0.250		
PFT findings				
DLCO, %	0.941 (0.865–1.022)	0.150		
FVC, %	0.958 (0.910–1.009)	0.103		
FEV1, %	0.968 (0.923–1.015)	0.176		

ILD: interstitial lung disease; RP-ILD: rapidly progressive ILD; ANA: antinuclear antibodies; CTD: connective tissue disease; CK: creatine kinase; CRP: C-reactive protein; PFT: pulmonary function test; FVC: forced vital capacity; FEV1: forced expiratory volume in 1 s.

Further, our results confirm that the coincidence of anti-Ro52 in antisynthetase syndrome predicts RP-ILD. The frequency of anti-Ro52 in patients with anti-Jo1 reached 65% in 1 published report¹⁹. Nevertheless, our study demonstrates that anti-Ro52 is more prevalent in patients with non-Jo1 antibodies and associated with RP-ILD, particularly in anti-PL7-positive patients. Thus, it is indicative that the combination of anti-PL7 and anti-Ro52 is a predictive marker of RP-ILD. But whether the anti-PL7 and anti-Ro52 antibodies are directly involved in the development of RP-ILD has not been determined.

Obviously, RP-ILD contributes to increased mortality rates. Regarding therapy responsiveness, fewer than half of the patients with antisynthetase syndrome with RP-ILD in our study responded well to high-dose steroid and immunosuppressive therapy. The first-line therapeutic regimen is to initiate steroid pulse and CYC treatments in patients with antisynthetase syndrome with RP-ILD in our cohort. Effective treatments using rituximab, cyclosporine, and tacrolimus have been reported in severe ILD cases^{13,31,32,33,34,35}. However, to date, there have been no reported controlled clinical trials to validate any 1 therapy for RP-ILD as optimal.

Regarding the association between the antisynthetase antibodies with prognosis, previous reports showed that the presence of antisynthetase antibodies predicts favorable outcomes³⁶. The survival rates decreased more rapidly in patients with anti-PL7 in the early longterm followup; patients with anti-PL7 had the highest mortality within first year of onset, but patients with anti-Jo1 had the lowest 10-year survival rate. Patients with antisynthetase syndrome with anti-EJ had better outcomes than other patients with antisynthetase syndrome in the long term. Despite these differences, in the survival analysis, the antisynthetase antibodies did not significantly affect patients' longterm outcomes. In multivariate analysis, the antisynthetase antibodies also did not affect prognosis. Two possible reasons why the differences observed in survival analysis were not significant may be the relatively short followup time and a relatively small sample size.

Regarding ILD patterns in antisynthetase antibodies-positive patients, CT scans were routinely performed in clinical practice. Radiologically, NSIP was the most common pattern seen upon initial diagnosis, followed by OP and UIP. However, no relationship was found between the CT patterns of ILD and the therapeutic response of patients complicated with RP-ILD. Because lung biopsy is infrequently performed, histological features cannot be obtained and the differences cannot be compared between the patients with distinct antisynthetase antibodies. Yousem, *et al* found the nonconformity of radiological and biopsy results, and UIP was the dominant ILD pattern in patients with anti-PL7³⁷. Thus, biopsy confirmation is still needed in clinical settings. Further, the mechanism behind the association between the severity of ILD and pathological patterns also requires more research to determine.

Apart from RP-ILD, our results show that hyperferritinemia is also an indicator of worse outcomes in patients with antisynthetase syndrome according to survival analysis. Hyperferritinemia has been described as closely associated with RP-ILD in patients who are antimelanoma differentiation-associated protein 5 antibody-positive^{18,38,39}. Our results also show that serum ferritin is dramatically elevated in patients with antisynthetase syndrome complicated with RP-ILD. Therefore, serum ferritin not only confers a poor outcome, but also can be used to monitor antisynthetase syndrome disease activity.

IIM has been demonstrated to be closely associated with malignancy. Chinoy, *et al* reported that traditional routinely assayed myositis antibodies (including anti-Jo1) have a significantly lower cancer risk than dermatomyositis patients without antibodies⁴⁰. Our finding that malignancy occurs in 6.5% of patients with antisynthetase syndrome is consistent with the observation by Chinoy, *et al*. Marie, *et al* also reported that anti-Jo1-positive patients with anti-Ro52 antibody experienced more malignancy than those without anti-Ro52¹⁴. However, we did not find any association between anti-Ro52 antibody and malignancy in patients with antisynthetase syndrome.

Taken together, our results suggest the distinctiveness of the anti-PL7 antibody despite the homogeneity of different antisynthetase antibodies and confirm the link between anti-PL7 and RP-ILD. In addition, we found that the presence of anti-Ro52 in patients with antisynthetase syndrome also predicts RP-ILD. Other prognostic indicators for poor outcomes of patients with antisynthetase syndrome include malignancy and hyperferritinemia. Further studies are required to elucidate the differences between distinct antisynthetase antibodies.

REFERENCES

1. Mammen AL. Dermatomyositis and polymyositis: clinical presentation, autoantibodies, and pathogenesis. *Ann N Y Acad Sci* 2010;1184:134-53.
2. Mimori T, Imura Y, Nakashima R, Yoshifuji H. Autoantibodies in idiopathic inflammatory myopathy: an update on clinical and pathophysiological significance. *Curr Opin Rheumatol* 2007;19:523-9.
3. Casciola-Rosen L, Mammen AL. Myositis autoantibodies. *Curr Opin Rheumatol* 2012;24:602-8.
4. Sordet C, Goetz J, Sibilia J. Contribution of autoantibodies to the diagnosis and nosology of inflammatory muscle disease. *Joint Bone Spine* 2006;73:646-54.
5. Hamaguchi Y, Fujimoto M, Matsushita T, Kaji K, Komura K, Hasegawa M, et al. Common and distinct clinical features in adult patients with anti-aminoacyl-tRNA synthetase antibodies: heterogeneity within the syndrome. *PLoS One* 2013;8:e60442.
6. Dugar M, Cox S, Limaye V, Blumbergs P, Roberts-Thomson PJ. Clinical heterogeneity and prognostic features of South Australian patients with anti-synthetase autoantibodies. *Intern Med J* 2011;41:674-9.
7. Hervier B, Benveniste O. Clinical heterogeneity and outcomes of antisynthetase syndrome. *Curr Rheumatol Rep* 2013;15:349.

8. Yamasaki Y, Satoh M, Mizushima M, Okazaki T, Nagafuchi H, Ooka S, et al. Clinical subsets associated with different anti-aminoacyl transfer RNA synthetase antibodies and their association with coexisting anti-Ro52. *Mod Rheumatol* 2016;26:403-9.
9. Kryštůfková O, Barbasso Helmers S, Venalis P, Malmström V, Lindroos E, Vencovský J, et al. Expression of BAFF receptors in muscle tissue of myositis patients with anti-Jo-1 or anti-Ro52/anti-Ro60 autoantibodies. *Arthritis Res Ther* 2014;16:454.
10. Ghillani P, Andre C, Toly C, Rouquette AM, Bengoufa D, Nicaise P, et al. Clinical significance of anti-Ro52 (TRIM21) antibodies non-associated with anti-SSA 60kDa antibodies: results of a multicentric study. *Autoimmun Rev* 2011;10:509-13.
11. La Corte R, Lo Mo Naco A, Locaputo A, Dolzani F, Trotta F. In patients with antisynthetase syndrome the occurrence of anti-Ro/SSA antibodies causes a more severe interstitial lung disease. *Autoimmunity* 2006;39:249-53.
12. Vánca A, Csípo I, Németh J, Dévényi K, Gergely L, Dankó K. Characteristics of interstitial lung disease in SS-A positive/Jo-1 positive inflammatory myopathy patients. *Rheumatol Int* 2009;29:989-94.
13. Bauhammer J, Blank N, Max R, Lorenz HM, Wagner U, Krause D, et al. Rituximab in the treatment of Jo1 antibody-associated antisynthetase syndrome: anti-Ro52 positivity as a marker for severity and treatment response. *J Rheumatol* 2016;43:1566-74.
14. Marie I, Hatron PY, Dominique S, Cherin P, Mouthon L, Menard JF, et al. Short-term and long-term outcome of anti-Jo1-positive patients with anti-Ro52 antibody. *Semin Arthritis Rheum* 2012;41:890-9.
15. Tieu J, Lundberg IE, Limaye V. Idiopathic inflammatory myositis. *Best Pract Res Clin Rheumatol* 2016;30:149-68.
16. Solomon J, Swigris JJ, Brown KK. Myositis-related interstitial lung disease and antisynthetase syndrome. *J Bras Pneumol* 2011;37:100-9.
17. American Thoracic Society. Idiopathic pulmonary fibrosis: diagnosis and treatment. International consensus statement. American Thoracic Society (ATS), and the European Respiratory Society (ERS). *Am J Respir Crit Care Med* 2000;161:646-64.
18. Gono T, Kawaguchi Y, Satoh T, Kuwana M, Katsumata Y, Takagi K, et al. Clinical manifestation and prognostic factor in anti-melanoma differentiation-associated gene 5 antibody-associated interstitial lung disease as a complication of dermatomyositis. *Rheumatology* 2010;49:1713-9.
19. Trallero-Araguás E, Grau-Junyent JM, Labirua-Iturburu A, García-Hernández FJ, Monteagudo-Jiménez M, Fraile-Rodríguez G, et al. Clinical manifestations and long-term outcome of anti-Jo1 antisynthetase patients in a large cohort of Spanish patients from the GEAS-IIM group. *Semin Arthritis Rheum* 2016;46:225-31.
20. Kalluri M, Sahn SA, Oddis CV, Gharib SL, Christopher-Stine L, Danoff SK, et al. Clinical profile of anti-PL-12 autoantibody. Cohort study and review of the literature. *Chest* 2009;135:1550-6.
21. Johnson C, Connors GR, Oaks J, Han S, Truong A, Richardson B, et al. Clinical and pathologic differences in interstitial lung disease based on antisynthetase antibody type. *Respir Med* 2014;108:1542-8.
22. Andersson H, Aaløkken TM, Günther A, Mynarek GK, Garen T, Lund MB, et al. Pulmonary involvement in the antisynthetase syndrome: a comparative cross-sectional study. *J Rheumatol* 2016;43:1107-13.
23. Kim SH, Park IN. Acute respiratory distress syndrome as the initial clinical manifestation of an antisynthetase syndrome. *Tuberc Respir Dis* 2016;79:188-92.
24. Bajocchi G, Piro R, Lombardini C, Cavazza A, Facciolo N. Acute respiratory distress syndrome: an undercover antisynthetase syndrome: a case report and a review of the literature. *Clin Exp Rheumatol* 2012;30:424-8.
25. Polosa R, Di Mauro C, Spampinato B, Castelli L, D'Amico G, Edwards CJ, et al. A patient with antihistidyl-tRNA synthetase positive polymyositis presenting as acute respiratory distress syndrome. *J Clin Rheumatol* 2008;14:219-21.
26. Piroddi IM, Ferraioli G, Barlascini C, Castagneto C, Nicolini A. Severe respiratory failure as a presenting feature of an interstitial lung disease associated with anti-synthetase syndrome (ASS). *Respir Investig* 2016;54:284-8.
27. Marie I, Josse S, Decaux O, Dominique S, Diot E, Landron C, et al. Comparison of long-term outcome between anti-Jo1- and anti-PL7/PL12 positive patients with antisynthetase syndrome. *Autoimmun Rev* 2012;11:739-45.
28. Hervier B, Devilliers H, Stanciu R, Meyer A, Uzunhan Y, Masseur A, et al. Hierarchical cluster and survival analyses of antisynthetase syndrome: phenotype and outcome are correlated with anti-tRNA synthetase antibody specificity. *Autoimmun Rev* 2012;12:210-7.
29. Hervier B, Uzunhan Y, Hachulla E, Benveniste O, Nunes H, Delaval P, et al. Antisynthetase syndrome positive for anti-threonyl-tRNA synthetase (anti-PL7) antibodies. *Eur Respir J* 2011;37:714-7.
30. Labirua-Iturburu A, Selva-O'Callaghan A, Vincze M, Danko K, Vencovsky J, Fisher B, et al. Anti-PL-7 (anti-threonyl-tRNA synthetase) antisynthetase syndrome: clinical manifestations in a series of patients from a European multicenter study (EUMYONET) and review of the literature. *Medicine* 2012;91:206-11.
31. Keir GJ, Maher TM, Hansell DM, Denton CP, Ong VH, Singh S, et al. Severe interstitial lung disease in connective tissue disease: rituximab as rescue therapy. *Eur Respir J* 2012;40:641-8.
32. Wilkes MR, Sereika SM, Fertig N, Lucas MR, Oddis CV. Treatment of antisynthetase-associated interstitial lung disease with tacrolimus. *Arthritis Rheum* 2005;52:2439-46.
33. Kotani T, Takeuchi T, Makino S, Hata K, Yoshida S, Nagai K, et al. Combination with corticosteroids and cyclosporin-A improves pulmonary function test results and chest HRCT findings in dermatomyositis patients with acute/subacute interstitial pneumonia. *Clin Rheumatol* 2011;30:1021-8.
34. Tillie-Leblond I, Wislez M, Valeyre D, Crestani B, Rabbat A, Israel-Biet D, et al. Interstitial lung disease and anti-Jo-1 antibodies: difference between acute and gradual onset. *Thorax* 2008;63:53-9.
35. Stanciu R, Guiguet M, Musset L, Toutou D, Beigelman C, Rigolet A, et al. Antisynthetase syndrome with anti-Jo1 antibodies in 48 patients: pulmonary involvement predicts disease-modifying antirheumatic drug use. *J Rheumatol* 2012;39:1835-9.
36. Hozumi H, Enomoto N, Kono M, Fujisawa T, Inui N, Nakamura Y, et al. Prognostic significance of anti-aminoacyl-tRNA synthetase antibodies in polymyositis/dermatomyositis-associated interstitial lung disease: a retrospective case control study. *PLoS One* 2015;10:e0120313.
37. Yousem SA, Schneider F, Bi D, Oddis CV, Gibson K, Aggarwal R. The pulmonary histopathologic manifestations of the anti-PL7/antithreonyl transfer RNA synthetase syndrome. *Hum Pathol* 2014;45:1199-204.
38. Gono T, Kawaguchi Y, Hara M, Masuda I, Katsumata Y, Shinozaki M, et al. Increased ferritin predicts development and severity of acute interstitial lung disease as a complication of dermatomyositis. *Rheumatology* 2010;49:1354-60.
39. Xu Y, Yang CS, Li YJ, Liu XD, Wang JN, Zhao Q, et al. Predictive factors of rapidly progressive-interstitial lung disease in patients with clinically amyopathic dermatomyositis. *Clin Rheumatol* 2016;35:113-6.
40. Chinoy H, Fertig N, Oddis CV, Ollier WE, Cooper RG. The diagnostic utility of myositis autoantibody testing for predicting the risk of cancer-associated myositis. *Ann Rheum Dis* 2007;66:1345-9.