

# The 15% Rule in Scleroderma: The Frequency of Severe Organ Complications in Systemic Sclerosis. A Systematic Review

Chayawee Muangchan, Canadian Scleroderma Research Group, Murray Baron, and Janet Pope

**ABSTRACT. Objective.** The prevalence of organ complications in scleroderma (systemic sclerosis; SSc) varies by definition used. This study was done to determine the frequency of several features of SSc.

**Methods.** A search of Medline-Ovid/Embase, PubMed, and Scopus databases from 1980 to November 30, 2011, was conducted to identify relevant articles with at least 50 patients with SSc extracting prevalence of each organ complication. Study quality was assessed using the STROBE (Strengthening The Reporting of OBServational studies in Epidemiology) checklist. Pooled prevalence was calculated using the random effects method. Heterogeneity was quantified using  $I^2$ .

**Results.** A total of 5916 articles were identified (913 from Medline-Ovid/Embase, 1009 from PubMed, and 3994 from Scopus); 5665 were excluded, leaving 251 articles for full-text review, with 69 included. Where available, frequencies were also included from the Canadian Scleroderma Research Group. Many severe complications in SSc occur about 15% of the time, including cardiac involvement (15%, 95% CI 6–24), diastolic dysfunction (16%, 95% CI 14–17), estimated pulmonary artery pressure > 40 mm Hg (18%, 95% CI 14–21), pulmonary arterial hypertension by right heart catheterization (15%, 95% CI 12–17), forced vital capacity (FVC) < 70% predicted (15%, 95% CI 12–17), FVC < 80% predicted (17%, 95% CI 12–21), myositis (13%, 95% CI 10–17), inflammatory arthritis (12%, 95% CI 9–16), Sjögren overlap (13%, 95% CI 10–16), and digital ulcers (DU; 15%, 95% CI 10–20); and 15% of DU have complications (amputations 12%, 95% CI 8–16, and hospitalizations 13%, 95% CI 6–21). Scleroderma renal crisis is uncommon but occurs in almost 15% (12%, 95% CI 5–19) of cases of disseminated cutaneous SSc. There is no 15% rule within skin and gastrointestinal tract for SSc.

**Conclusion.** The “15%” rule for frequency of significant organ involvement in SSc is helpful. (First Release July 15 2013; J Rheumatol 2013;40:1545–56; doi:10.3899/jrheum.121380)

## Key Indexing Terms:

SCLERODERMA                      RENAL CRISIS                      PULMONARY ARTERY HYPERTENSION  
PULMONARY FIBROSIS                      MYOPATHY                      DIGITAL ULCER

Systemic sclerosis (SSc; scleroderma) is a systemic autoimmune connective tissue disease characterized by autoimmunity, vascular malfunction and inflammation, and fibrosis. Disease subsets can be classified into limited

(lcSSc) and diffuse (dcSSc) cutaneous SSc<sup>1</sup>. Patients with dcSSc usually have more complications<sup>2,3</sup>. Steen and Medsger reported the prevalence of severe organ complication in dcSSc using the Pittsburgh Scleroderma Databank<sup>4</sup>. Many other SSc studies from different cohorts have also reported the prevalence of organ complications using different definitions. Our goal was to promote awareness of the prevalence of important organ involvement in SSc to facilitate appropriate screening and investigation. We used a metaanalysis of the published literature, where available, to define the frequency of severe organ complications of SSc and to construct a broad, easily remembered rule to help clinicians remember those frequencies.

## MATERIALS AND METHODS

**Identification of studies and study population.** A comprehensive literature search of the Medline-Ovid/Embase, PubMed, and Scopus databases was conducted, each from 1980 [when the preliminary American College of Rheumatology (ACR) classification criteria for SSc were published] to November 30, 2011. We looked for English-language research articles for adult SSc using the following search terms: scleroderma and systemic sclerosis. We searched for organ complications using the following search terms:

*From the Schulich School of Medicine and Dentistry, Western University, London, Ontario; St. Joseph Health Care, London, Ontario; Division of Rheumatology, Department of Medicine, Faculty of Medicine, Mahidol University, Siriraj Hospital, Bangkok, Thailand; and Jewish General Hospital, Montreal, Quebec, Canada.*

*The Canadian Scleroderma Research Group is supported by the Canadian Institutes of Health Research (CIHR) and the Fonds de Recherche en Santé du Québec; and the Scleroderma Society of Canada, Scleroderma Society of Ontario, Sclérodémie Québec, and Cure Scleroderma Foundation.*

*C. Muangchan, MD, Research Fellow, Rheumatology, Schulich School of Medicine and Dentistry, Western University, St. Joseph Health Care; Division of Rheumatology, Department of Medicine, Faculty of Medicine, Mahidol University, Siriraj Hospital; M. Baron, MD, FRCPC, Jewish General Hospital; J. Pope, MD, MPH, FRCPC, Schulich School of Medicine and Dentistry, Western University, St. Joseph Health Care.*

*Address correspondence to Dr. J. Pope, St. Joseph's Health Care, 268 Grosvenor Street, London, Ontario N6A 4V2, Canada.*

*E-mail: janet.pope@sjhc.london.on.ca*

*Accepted for publication May 13, 2013.*

Personal non-commercial use only. The Journal of Rheumatology Copyright © 2013. All rights reserved.

Kidney: malignant arterial hypertension, rapidly progressive renal failure, kidney failure, acute kidney/renal failure, glomerulonephritis, scleroderma renal crisis (SRC).

Heart: cardiomyopathy, heart failure, ventricular dysfunction, heart block, heart muscle conduction disturbance, myocarditis, pericarditis, pericardial effusion.

Pulmonary hypertension: pulmonary hypertension (PH), pulmonary arterial hypertension (PAH).

Lung: interstitial lung disease (ILD), pulmonary fibrosis, restrictive lung disease, lung function test, lung fibrosis, spirometry.

Gastrointestinal (GI) system: malabsorption, hyperalimentation, intestinal pseudoobstruction, malnutrition, bacterial overgrowth.

Muscle: myopathy, myositis, muscle weakness, muscle disease, skeletal muscle/myopathy, polymyositis.

Joint: arthritis/chronic arthritis, synovitis, arthropathy, joint erosion.

Digital ulcer or ischemic complications: digital ulcer (DU), digital necrosis, digital gangrene, digital loss, digital amputation.

Skin: modified Rodnan skin score (mRSS), skin involvement, skin score.

Sjögren syndrome (SS).

Studies were included if they provided numerical data (numbers and/or percentages) of the incidence and/or prevalence of the clinical manifestations of interest; and if they provided a definition of or stratified severity for each complication (described below). Studies were excluded if they were case reports/case series, had fewer than 50 patients with SSc, or were review articles. If more than 1 identified study used the same or overlap study population at the same period, the most recent or larger sample-size study was included. If publications from the same group reported different manifestations, each publication was used for nonredundant items. Two reviewers (CM and JP) separately included reports using the inclusion and exclusion criteria. If there was disagreement, the full reports were reviewed and agreement was achieved by consensus.

Severe organ complications included the following:

Kidney: documented SRC as defined by new-onset malignant arterial hypertension and/or rapidly progressive glomerulonephritis with serum creatinine rising by at least 20% of baseline with/without microangiopathic hemolytic anemia occurring in both the dcSSc subset and SSc in total. SRC was often defined by the authors of each report.

Heart: documented cardiomyopathy with a decrease in left ventricular ejection fraction (LVEF) by echocardiography; symptoms of congestive heart failure; left diastolic dysfunction by echocardiography; arrhythmia attributable to scleroderma heart disease requiring treatment; and symptomatic pericarditis or moderate to large pericardial effusion.

PH and PAH: PH was defined by Doppler echocardiography providing estimated systolic (sPAP) or mean pulmonary artery pressure (mPAP). We stratified PH according to the cutoff level of sPAP or mPAP used by each study. PAH was defined by right heart catheterization (RHC).

Lung: documented restrictive lung disease using percentage of predicted FVC (FVC % predicted) or total lung capacity (TLC % predicted) by standard pulmonary function testing (PFT). The severity of restriction was classified by FVC % predicted or TLC % predicted used by each study. We did not include ILD defined solely by chest radiograph because it is common in SSc, including asymptomatic patients.

GI system: clinically documented malabsorption syndrome, repeated episodes of intestinal pseudoobstruction, or severe GI problems requiring hyperalimentation. Gastroesophageal reflux and dysphagia were not included because they were thought to be very common. We also did not include bacterial overgrowth syndrome because most studies defined this by a variety of tests but it is often a clinical diagnosis in patients with SSc. Muscle: clinically documented (proximal, symmetrical) muscle weakness; proximal muscle weakness with elevated creatine kinase, electromyographic testing (EMG), and muscle biopsy evidence of inflammatory myositis, fulfilling or not fulfilling the Bohan and Peter criteria for myositis<sup>5,6</sup>, i.e., dermatomyositis (DM)/polymyositis (PM).

Arthritis: clinically documented arthritis or synovitis using the swollen joint count (SJC) with/without the tender joint count (TJC) and those with

inflammatory arthritis who had erosions on radiographs, which is a subset population. We did not include inflammatory arthritis defined solely by radiographs or ultrasound.

Digital ulcer or ischemic complications: clinically documented digital ischemic vasculopathy as prevalent digital ulcer (a loss of continuity of epithelial coverage that can be denuded or covered by a scab or necrotic tissue); current gangrene, necrosis anywhere on the digit, and complications including amputation (autoamputation or surgical) or hospitalization due to digital ulcers. Digital pits/scars and Raynaud's phenomenon (RP) were not included because they are extremely frequent in SSc.

Skin: documented mRSS above various levels and classified to the cutoff levels according to each study definition.

SS: documented by fulfilling any standard criteria for diagnosis of SS. The frequency of overlap of SSc with SS was studied. We did not include sicca symptoms with SSc because they have a variety of classification definitions and tests that are not readily pooled.

*Study population from the Canadian Scleroderma Research Group (CSRG).* We also studied the prevalence of each organ complication in the database of the CSRG if the data were not currently in the published literature. The CSRG is a multicenter, prospective national registry of adult SSc across Canada. Clinical and laboratory data are collected annually in a comprehensive database of subjects enrolled between August 2004 and April 2010 who fulfilled preliminary ACR (formerly the American Rheumatism Association) criteria for the classification of SSc (scleroderma); or who were diagnosed by their rheumatologist as having SSc. They were included if the prevalence of organ complications was provided. The following CSRG definitions of organ complication were used, because they were predefined and were the same as in other databases where possible. Renal: SRC was recorded from a physician-completed form. Heart: cardiomyopathy was defined as LVEF  $\leq$  45% by standard echocardiography; conduction system abnormalities were defined as any conduction abnormalities or arrhythmias on electrocardiography; we had no specific information on symptoms of congestive heart failure, and there was no routine reporting of left ventricular diastolic dysfunction by echocardiography; pericarditis was defined as at least moderate pericardial effusion by standard echocardiography; PH was defined with a surrogate: sPAP  $\geq$  45 mm Hg by standard echocardiography or diagnosis of PAH. Lung: pulmonary restriction was defined by FVC  $<$  70% predicted on PFT. GI system: hyperalimentation and intestinal pseudoobstruction were recorded from the physician-completed standardized forms. Muscle: proximal limb girdle muscle weakness was recorded from physical examination using a score  $\leq$  4 based on 5-point Likert scale; EMG and muscle biopsies are not provided in the registry. Arthritis was defined clinically as SJC  $\geq$  1 and TJC  $\geq$  1. The CSRG database does not include joint radiographs. Digital ulcers and ischemic complications: current digital ulcer(s)/gangrene/amputation were recorded from physical examination (anywhere on the digit), which was recorded at each visit. Skin: The mRSS was recorded. SS was defined by patient questionnaires about sicca symptoms; SS information, such as labial biopsy results, was not recorded.

*Data extraction.* Data extraction was performed by 1 investigator (CM). The following data were extracted from each study: first author, year of publication, location of study; study design; sample size; and prevalence in number and/or percentage of each organ complication. The prevalence of various organ involvements was extracted from studies, and forest plots were constructed. The CSRG data did not necessarily contain identical definitions, or in some cases, any data for certain outcomes. In addition, if publications from the CSRG database were available, then they were used and the prevalence was not recalculated from the updated database (because the former were papers published in peer-reviewed journals). If publications used distinctively different definitions of a certain organ, the rates were not pooled, resulting in some plots of different definitions of organ involvement. For instance, estimates were not pooled for various FVC cutoff values, and echocardiographic estimates of PH were not pooled with RHC-proven PAH.

**Quality assessment.** Study quality was assessed by the Strengthening the Reporting of Observational Studies in Epidemiology (STROBE) checklist for cohort, case-control, and cross-sectional studies<sup>7,8</sup>. The STROBE checklist consists of 22 items: 18 items are common to all 3 study designs and 4 items (6a/6b, 12d, 14c, 15) are specific to cohort, case-control, or cross-sectional studies. The maximum score varies based on the number of applicable items on the checklist. Two items on the checklist (12e and 16c) pertain to statistical methods (12e describes any sensitivity analysis of the main results; 16c is scored where the relative risk is translated into absolute risk for a meaningful time period) so these items were not relevant to all the articles. One item applied only to matched studies (6b), and another only to cohort studies (14c). The maximum attainable score was 32. The purpose of STROBE is not to give a quality score but to ensure clear presentation of reporting.

**Statistical analysis.** Proportions were pooled with a random effects model<sup>9</sup>. A random effects model was used because it assumes that true frequencies from the individual studies have a probability distribution, and it assigns a more balanced weight to each study. Forest plots were created to estimate prevalence with 95% CI. The I-square (I<sup>2</sup>) statistic was used to quantify the magnitude of heterogeneity (i.e., mild 0–30%, moderate 31%–50%, high > 50%), tau-square was the square-root of the between-study variance, and p value was for Cochran's Q statistic, the classic measure of heterogeneity. Publication bias was determined using funnel plots.

## RESULTS

**Search results.** The literature search identified 5916 poten-

tially relevant articles that were screened for eligibility. A total of 5665 articles were excluded. There were 173 repeated citations among the search terms and/or different databases. Two articles were identified by hand-searching key references. Eleven further articles were excluded: 9 used the same study population at the same period or at least contained the same patients as part of single-center, national, or multinational databases, 1 article selectively collected data on SSc patients with digital ulcers, and 1 had a different definition for organ involvement, yielding 69 articles included in the metaanalysis (Figure 1).

**Description of studies included.** Characteristics of the 69 articles included in the metaanalysis are shown in Table 1. The studies incorporated data for SSc patients from different locations: North America<sup>4,12,17,26,27,34,43,58,60,70,76,77</sup>, South America<sup>16,53</sup>, Europe<sup>10,11,14,18,19,20,21,22,23,24,25,26,27,28,29,30,31,32,33,34,35,36,37,38,39,40,41,42,47,48,49,50,51,52,57,59,61,62,63,66,68,69,71</sup>, Africa<sup>55</sup>, Asia<sup>13,24,25,38,46,54,56,64,65,67,74</sup>, and Australia<sup>15,44,45,75</sup>. Eighty-five percent of the pooled study population from 69 articles were women. The mean age of patients with SSc (at cohort entry or first diagnosis) from 69 articles was 51.7 years (range 29.4–60.5 yrs) and mean disease duration from

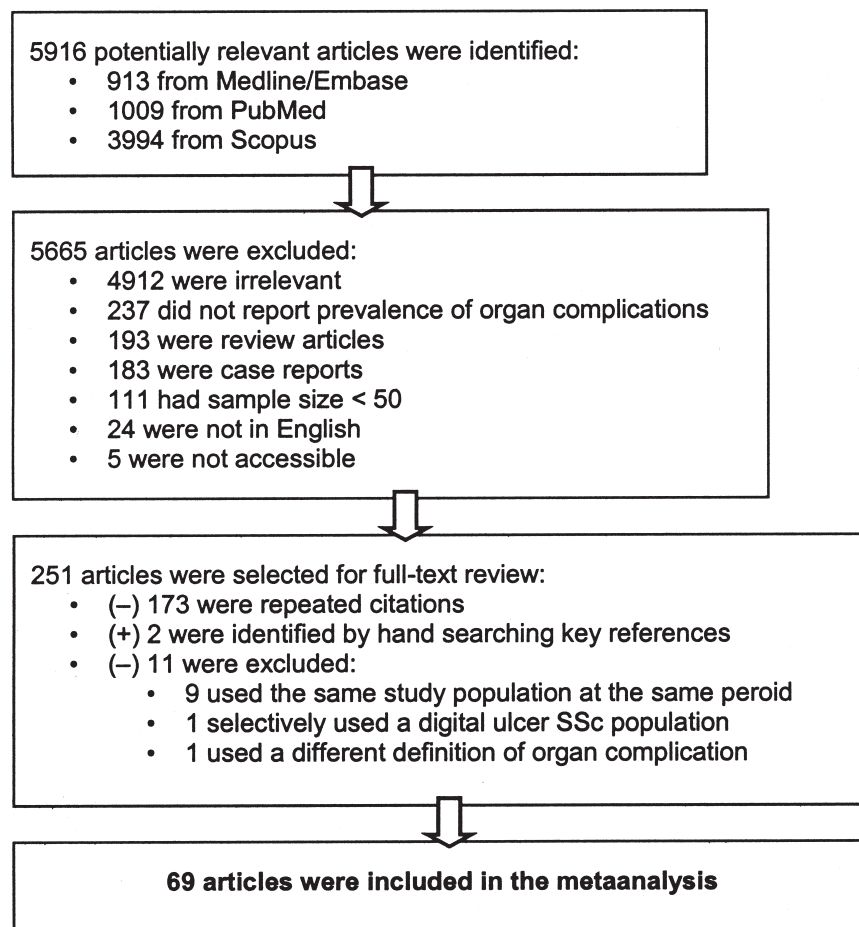


Figure 1. The search strategy. SSc: systemic sclerosis.

Table 1. Characteristics of 69 articles included in the metaanalysis.

Study	Country (study period)	STROBE Checklist (total = 32)	Sample Size (N)	SSc Subset, %			Sex, %		Mean Age, yrs (SD)	Disease Duration, yrs (SD) <sup>†</sup>
				dcSSc	lcSSc	Other	Male	Female		
Walker 2007 <sup>10</sup>	EUSTAR (2004–2006)	26	1349	100	0	0	18.9	81.1	52.3 (13.7)	7.4 (6.9)
Steen <sup>4</sup>	USA (1972–1995)	23	953	100	0	0	20	80	NA	9.8
Pérez-Bocanegra <sup>11</sup>	Spain (1976–2007)	25	319	20.1	58.3	21.6	NA	NA	NA	NA
De Marco <sup>12</sup>	USA (1991–1996)	30	134	100	0	0	22.4	77.6	NA	0.8 (0.3)
Hashimoto <sup>13</sup>	Japan (1973–2008)	27	405	32.6	67.4	NA	7.2	92.8	47*	14 (0.6) <sup>††</sup>
La Montagna <sup>14</sup>	Italy (1965–1994)	22	323	26	38.4	35.6	7.1	92.9	46.7 (0.8)	NA
Walker 2003 <sup>15</sup>	Australia (1983–2000)	22	538	NA	NA	NA	NA	NA	NA	NA
Coral-Alvarado <sup>16</sup>	Colombia	28	349	23.5	76.5	NA	8	92	54.5 (12.9)	6.2 (5.9)
Khimdas <sup>17</sup>	Canada	27	938	43.4	50	NA	14	86	55.4 (0.3)	13.6 (0.3) <sup>††</sup>
Nagy <sup>18</sup>	Hungary (1982–1993)	29	171	21	79	NA	12.9	87.1	41*	2**
Allanore <sup>19</sup>	EUSTAR (2004–2008)	26	7073	32.8	67.2	NA	13.9	86.1	56 (14)	NA
Hunzelmann <sup>20</sup>	Germany (2003–2007)	24	1483	32.7	45.5	21.8	16.4	83.4	55.7 (13.7)	NA
Avouac <sup>21</sup>	France & Italy	30	1165	30	70	NA	11.7	88.3	60 (14)	13 (8)
Avouac <sup>22</sup>	France & Italy	23	1132	29	71	NA	12.6	87.4	60 (14)	12 (8)
Czirják <sup>23</sup>	Hungary (1983–2005)	30	366	27.6	72.4	NA	13.9	86.1	56.8 (12.2)	13.5 (10.8)
Nishimagi <sup>24</sup>	Japan (1992–2004)	25	302	34.8	65.2	NA	12.6	87.4	53*	3**
Foocharoen <sup>25</sup>	Thailand (2005–2006)	27	117	70.1	29.9	NA	40.2	59.8	49.8 (10.3)	NA
Schmajuk <sup>26</sup>	USA (1996–2006)	25	165	31	69	NA	19.4	80.6	NA	NA
Low <sup>27</sup>	Canada (1990–2007)	26	335	50.6	49.4	NA	19.9	80.1	NA	NA
Picha <sup>28</sup>	Greece	23	150	36	56	8	12	88	43 (2.3)	15 (1.7)
Shand <sup>29</sup>	UK (1983–2001)	31	225	100	0	0	18	82	44 (13)	10 (6)
Nguyen <sup>30</sup>	France (2003–2009)	28	381	40.4	59.6	NA	16.3	83.7	55.9 (13.3)	9.5 (7.8)
Hügler <sup>31</sup>	EUSTAR (2004–2009)	28	8431	32.5	58.2	9.1	13.6	86.4	55*	6.3**
Minier <sup>32</sup>	Hungary	23	131	NA	NA	NA	1	99	55.9 (11.6)	8.1 (7.2)
Joven <sup>33</sup>	Spain (1980–2006)	24	204	31	59	10	11	89	49 (17)	6 (10)
Chang <sup>34</sup>	USA (1990–2001)	28	619	41	59	NA	17.1	82.9	50.5 (13.1)	NA
Follansbee <sup>35</sup>	USA (1959–1988)	24	1095	NA	NA	NA	NA	NA	NA	NA
de Groot <sup>36</sup>	France (2002–2003)	26	570	26.3	73.7	NA	15	85	54 (14)	9 (8)
Hanitsch <sup>37</sup>	Germany (2003–2007)	27	1200	39.2	60.8	NA	NA	NA	NA	8
Poormoghim <sup>38</sup>	Iran (2006–2007)	25	58	41.4	58.6	NA	8.6	91.4	40.8 (13.7)	7.97
Morelli <sup>39</sup>	Italy (1993–1994)	24	72	59.7	40.3	NA	17.1	82.9	48	10 <sup>†</sup>
Alivernini <sup>40</sup>	Italy	26	130	26.9	73.1	NA	10.8	89.2	56.5 (12.2)	8.1 (8.1)
Aguglia <sup>41</sup>	Italy (1993–1998)	24	124	46	54	NA	14.5	85.5	52 (12.5)	11.2 (8)
Launay <sup>42</sup>	France	24	197	56.4	43.6	NA	17.8	82.2	48 (14)	NA
Pope <sup>43</sup>	Canada (2002–2003)	27	539	41	58	1	16	84	56 (13)	9 (7)
Cox <sup>44</sup>	Australia (1983–2002)	24	608	20.4	62.7	16.9	NA	NA	NA	NA
Phung <sup>45</sup>	Australia (2005–2007)	29	184	24.5	75.5	NA	12.9	87.1	60*	10.5**
Yamane <sup>46</sup>	Japan (1990–1999)	19	125	44	56	NA	8.8	91.2	NA	NA
Hachulla <sup>47</sup>	France (2002–2003)	27	599	27.6	72.5	NA	16.2	83.8	54.7 (13)	8.5 (7.9)
Mukerjee <sup>48</sup>	UK (1998–2002)	25	722	NA	NA	NA	16.6	83.4	NA	NA
Vonk <sup>49</sup>	The Netherlands (2005–2007)	26	1148	NA	NA	NA	24.6	75.4	59.1*	NA
Avouac <sup>50</sup>	France	22	120	43	57	NA	15	85	56.5*	6
Beretta <sup>51</sup>	Italy (1982–2008)	23	558	26.9	73.1	NA	10.6	89.4	NA	NA
Plastiras <sup>52</sup>	Greece (1993–2005)	26	114	47.4	52.6	NA	15.8	84.2	NA	NA
Cordeiro <sup>53</sup>	Brazil (2001–2003)	24	57	56.1	43.9	NA	14	86	42.6 (13.1)	9.6 (6.9)
Murata <sup>54</sup>	Japan (1990–1995)	25	80	35.6	64.4	NA	9.6	90.4	52.7 (12.3)	11.6 (8.7)
Tager <sup>55</sup>	South Africa (1990–1995)	24	63	65	28.6	6.4	17.9	82.1	36.1	3.6
Kumar <sup>56</sup>	India (2004–2007)	25	100	39	61	NA	13	87	29.4 (11.4)	7.15 (5.5)
Hachulla <sup>57</sup>	France (2002–2003)	29	546	27.5	72.5	NA	15.9	84.1	54.9 (13)	8.8 (8.1)
Steen <sup>58</sup>	USA (1972–1989)	27	890	47.5	52.5	NA	20.2	79.8	NA	NA
Ostojic <sup>59</sup>	Serbia & Montenegro (2001–2003)	19	105	52.4	47.6	NA	NA	NA	NA	NA
Duchini <sup>60</sup>	USA (1985–1996)	19	144	79.2	20.8	NA	12.5	87.5	54.4 (16)	11.08 (8.3)
Parodi <sup>61</sup>	Italy	21	55	32.7	67.3	NA	9.1	90.9	59 (11)	NA
Szamosi <sup>62</sup>	Hungary (1994–2004)	17	246	20.3	79.7	NA	16.3	83.7	54.2 (9.6)	9.1 (6.3)
Marie <sup>63</sup>	France (2006–2007)	22	51	49	51	NA	19.6	80.4	54*	4**
Mimura <sup>64</sup>	Japan (1990–2001)	26	302	44	56	NA	10.6	89.4	52	NA

Personal non-commercial use only. The Journal of Rheumatology Copyright © 2013. All rights reserved.

Table 1. Continued.

Study	Country (study period)	STROBE Checklist (total = 32)	Sample size (N)	SSc Subset, %			Sex, %		Mean Age, yrs (SD)	Disease Duration, yrs (SD) <sup>†</sup>
				dcSSc	lcSSc	Other	Male	Female		
Balbir-Gurman <sup>65</sup>	Israel (2004–2009)	19	165	25.4	74.6	NA	NA	NA	60.5 (15.2)	10.4 (7.5)
Avouac <sup>66</sup>	EUSTAR (2004–2008)	25	7286	42	58	NA	14	86	56 (14)	10 (9)
Jinnin <sup>67</sup>	Japan (1990–2001)	22	173	36.4	63.6	NA	8.7	91.3	NA	NA
La Montagna <sup>68</sup>	Italy (2002–2002)	23	76	28.9	30.3	40.8	9.2	90.8	52*	8**
Tiev <sup>69</sup>	France (2002–2003)	25	599	28	72	NA	16	84	55 (13)	7 (7)
Wigley <sup>70</sup>	USA (1985–1990)	26	98	41.8	58.2	NA	20.4	79.6	50.9 (13.6)	NA
Nihtyanova <sup>71</sup>	UK	22	1168	29.5	70.5	NA	NA	NA	NA	NA
Sunderkötter <sup>72</sup>	Germany (2003–2007)	26	1690	31	48	21	17.2	82.8	NA	NA
Harrison <sup>73</sup>	UK (1994–2000)	27	101	27.7	72.3	NA	13	87	53*	13**
Wangkaew <sup>74</sup>	Thailand	22	50	NA	NA	NA	26	74	46.6 (7.9)	5.1 (4.6)
Swaminathan <sup>75</sup>	Australia (1998–2006)	23	193	24.4	60.6	15	17.1	82.9	54.6	NA
Wigley <sup>76</sup>	USA & Canada	26	586	NA	NA	NA	NA	NA	NA	NA
Ingraham <sup>77</sup>	USA (1972–1995)	NA	2080	NA	NA	NA	NA	NA	NA	NA

\* Median age; † disease duration from first onset of non-Raynaud's phenomenon symptom to study period or inclusion; \*\* median disease duration; †† disease duration from onset of Raynaud's phenomenon to study period or inclusion. dcSSc: diffuse cutaneous systemic sclerosis; lcSSc: limited cutaneous systemic sclerosis; NA: not applicable; EUSTAR: European League Against Rheumatism Scleroderma Trials and Research group.

onset of first non-Raynaud's symptoms to study period was 8.8 years (range 0.8–15 yrs). The attainable maximum score was 32 for the STROBE checklist and mean score of the 69 articles was 24.9 (range 17–31).

*Frequency of complications in CSRG cohort.* There were 1145 SSc patients included from August 18, 2004, to April 27, 2010 (duration of total followup 5 years, 8 months); data were available for analysis from 1043 of these patients according to their disease subset, either lcSSc or dcSSc. Eighty-six percent were women, with mean age 55.4 years and disease duration from onset of first non-Raynaud's symptoms to baseline visit of 11.0 years. Thirty-eight percent had dcSSc, of whom 117 (10.6% of total) had early dcSSc (< 3 yrs since onset). Frequency of each organ complication in the CSRG cohort is shown in Table 2.

*Analysis.* Forest plots were calculated to provide pooled OR estimates (Figure 2) for frequencies of several organs. Frequencies of organ complications in SSc and the dcSSc subset are shown in Table 3: it can be seen that many clinically relevant organ complications occurred in 15% of patients with SSc. For cardiac involvement we had 2 additional categories other than predefined organ system involvement, which were a combination of various cardiac complications in SSc (congestive heart failure, symptomatic pericarditis, symptomatic arrhythmia, and cardiomyopathy, as described above) and within the dcSSc subset, because that is how they were reported in the literature. We did not have pooled prevalence of skin involvement, because there were not at least 2 studies that used the same cutoff level for skin sclerosis by the mRSS.

## DISCUSSION

This systematic review reports the prevalence of severe organ complications in patients with SSc, except those very common in SSc such as RP, gastroesophageal reflux disease (GERD), dysphagia, and skin involvement. Data from the CSRG were used because it is a large national database with well-defined complications. Although some definitions of organ involvement were not standardized, we compared studies with similar definitions.

The frequency of organ involvement might change over time by both disease duration and year of publication. This may be true for SRC, which could be decreasing over time. The studies in our metaanalysis included patients with SRC in the period before use of angiotensin-converting enzyme inhibitors and afterward. Small cohorts were not included because their estimates of prevalence of organ involvement would potentially have a large degree of variability. We tried to exclude studies that contained the same patients.

Most organ involvement occurred in about 15% of cases, within the 95% CI. These included pooled data for severe cardiac involvement (congestive heart failure or symptomatic pericarditis, symptomatic arrhythmia, and cardiomyopathy) in both dcSSc and SSc, diastolic dysfunction, symptomatic arrhythmias or conduction abnormalities, and PH, as well as PAH, pulmonary restriction by various definitions of FVC (as a surrogate for ILD), myositis, arthritis, prevalent DU, complicated ulcers ever, and SS. The estimated prevalence of PAH in SSc defined by RHC was 15% (95% CI 12%–17%). When different studies were combined, the prevalence of PH by echocardiography in

Table 2. Frequency of organ complications in systemic sclerosis (SSc) from the Canadian Scleroderma Research Group (CSRG).

Baseline Characteristic	All Patients	Limited SSc	Diffuse SSc	Early dcSSc (≤ 3 yrs)	Late dcSSc (> 3 yrs)
No. (% from total group)	1043	647 (62)	396 (38)	117 (10.6)	269 (25.6)
Age, yrs (SD)	55.39 (12.13)	57.06 (11.77)	52.64 (12.31)	51.2 (13.21)	53.34 (11.77)
Female, n (%)	986 (86.1)	575 (88.9)	319 (80.6)	90 (76.9)	221 (82.2)
Disease duration, yr (SD)	10.99 (9.50)	12.37 (10.06)	9.02 (8.45)	1.46 (0.74)	12.30 (8.16)
Scleroderma renal crisis, %	4.3	1.9	8.4	8.5	8.2
Cardiomyopathy (%)	9/496 (1.8)	5/273 (1.8)	4/190 (2.1)	1/59 (1.7)	3/129 (2.3)
Arrhythmias (%)	70/280 (25.0)	38/160 (23.8)	26/100 (26.0)	7/24 (29.2)	18/74 (24.3)
Moderate to large pericardial effusion (%)	16/949 (1.7)	10/543 (1.8)	4/332 (1.2)	3/98 (3.1)	1/225 (0.4)
Systolic pulmonary artery pressure ≥ 45 mm Hg (%)	123/668 (18.4)	67/385 (17.4)	48/228 (21.1)	13/73 (17.8)	34/149 (22.8)
Forced vital capacity < 70% predicted (%)	125/946 (13.2)	56/539 (10.4)	60/338 (17.8)	15/104 (14.4)	42/228 (18.4)
sPAP ≥ 45 mm Hg & FVC < 70% (%)	35/952 (3.7)	13/549 (2.4)	21/331 (6.3)	6/101 (5.9)	14/224 (6.3)
Hyperalimentation (%)	31/1121 (2.8)	9/642 (1.4)	20/392 (5.1)	3/117 (2.6)	16/269 (5.9)
Intestinal pseudoobstruction (%)	44/1120 (3.9)	24/641 (3.7)	18/392 (4.6)	0/117 (2.6)	17/269 (6.3)
Proximal limb girdle weakness and/or neck weakness (%)	181/1114 (16.2)	78/639 (12.2)	93/389 (23.9)	33/115 (28.7)	57/266 (21.4)
Arthritis (SJC ≥ 1 and TJC ≥ 1), %	10.5	11.1	10.2	12.1	9.8
Active digital ulcer (%)	93/1121 (8.3)	50/644 (7.8)	40/393 (10.2)	11/117 (9.4)	28/267 (10.5)
Digital necrosis/gangrene (%)	12/1123 (1.1)	9/644 (1.4)	3/395 (0.8)	1/117 (0.9)	2/269 (0.7)
Digital loss/amputation (%)	66/1124 (5.9)	39/645 (6.0)	27/395 (6.8)	2/117 (1.7)	24/269 (8.9)
Modified Rodnan skin score (SD)	10.04 (9.54)	5.94 (5.07)	18.34 (10.29)	22.20 (10.14)	16.59 (9.85)
Modified Rodnan skin score > 20 (%)	155/1102 (14.1)	13/632 (2.1)	142/387 (36.7)	63/116 (54.3)	75/264 (28.4)

dcSSc: diffuse cutaneous systemic sclerosis; lcSSc: limited cutaneous systemic sclerosis; sPAP: systolic pulmonary artery pressure; FVC: forced vital capacity; SJC: swollen joint count; TJC: tender joint count.

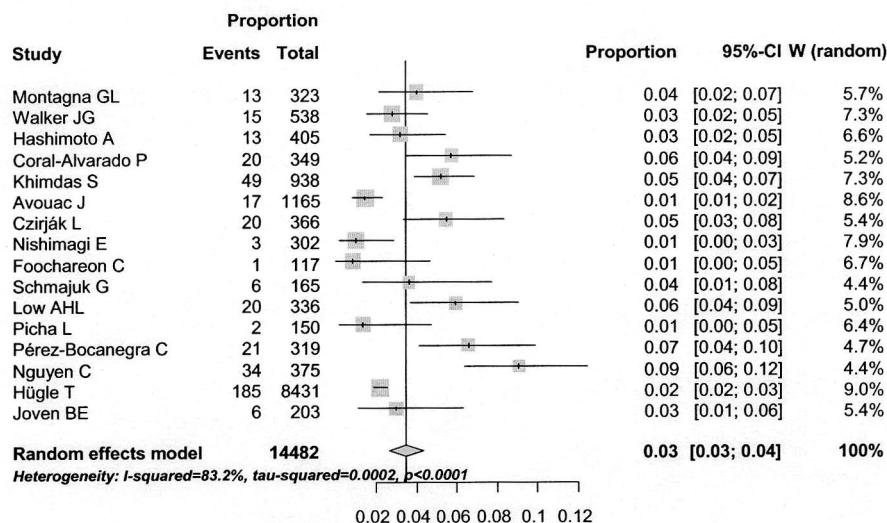
SSc was 14% (95% CI 8%–20%), prevalence by sPAP > 35 mm Hg was 14% (95% CI 9%–19%), and prevalence by sPAP > 40 or 45 mm Hg was 18% (95% CI 14%–21%). Considering FVC % predicted, the prevalence of FVC % predicted < 80% or 70% was 15% (i.e., for mild restrictive changes), but for very severe pulmonary restriction (FVC % predicted < 50%) the 15% rule did not apply.

SRC in the dcSSc subset was 12% (95% CI 5%–19%), with a wide CI including 15%. Organ involvement that did not meet the 15% criterion included SRC in SSc (3%, 95% CI 3%–4%), cardiomyopathy in SSc (3%, 95% CI 1%–6%), symptomatic congestive heart failure in SSc (5%, 95% CI 1%–9%), symptomatic pericarditis or moderate to large pericardial effusion in SSc (3%, 95% CI 1%–5%), FVC % predicted < 50% in SSc (8%, 95% CI 4%–13%), TLC % predicted < 80% in SSc (23%, 95% CI 22%–25%), malabsorption, intestinal pseudoobstruction and/or severe GI problems requiring hyperalimentation in SSc (5%, 95% CI 3%–6%), proximal muscle weakness (24%, 95% CI 17%–30%), radiographic erosions in those with clinical arthritis in SSc (9%, 95% CI 4%–14%), and digital gangrene in SSc (2%, 95% CI 1%–3%). The estimated prevalence of 15% does not apply to RP, GERD, and skin involvement by various mRSS cutoff scores (which we did not include in the analyses). The estimated prevalence of 15% for significant organ involvement in SSc is not a universal rule, but can help clinicians to be aware of the frequency of several complications of SSc.

A random effects model was used to pool the studies. However, differences in features of the study population in each cohort, such as ethnicity<sup>78,79,80</sup>, geography<sup>78</sup>, socioeconomic status<sup>79,80</sup>, disease subtype, disease duration, environmental factors, variable definitions of organ involvement, and other unknown factors/potential confounders, resulted in clinical heterogeneity of most of the pooled studies. Cohorts from Japan, India, and Thailand had lower age at disease onset compared to those from Europe and North America. Asian cohorts also had more pulmonary complications<sup>78</sup> and fewer digital ulcers<sup>26</sup>. Chinese patients experienced less SRC but more myositis compared to Europeans<sup>27</sup>. Pulmonary fibrosis occurred more often and was more severe in African Americans compared to whites<sup>79,80</sup>, and they had pulmonary hypertension at a younger age<sup>81</sup>. Hispanics and African Americans had more diffuse skin involvement, digital ulcers, lower FVC % predicted, and poorer socioeconomic status than whites<sup>82,83</sup>. Patients with less high school completion were reported to have more arthritis<sup>84</sup>. Sex and disease subset ratios varied between some cohorts, which could affect the frequency and severity of organ involvement<sup>85,86</sup>. Therefore, heterogeneity can affect the rate of complications, which is important when pooling data from several cohorts.

We tried to include large studies and as many studies as were available concerning each predefined organ system to diminish the variance, but some organ definitions yielded

## Scleroderma renal crisis in scleroderma



## Pulmonary hypertension (PH) and/or pulmonary artery hypertension (PAH) in scleroderma estimated by sPAP > 40 or 45 mm Hg

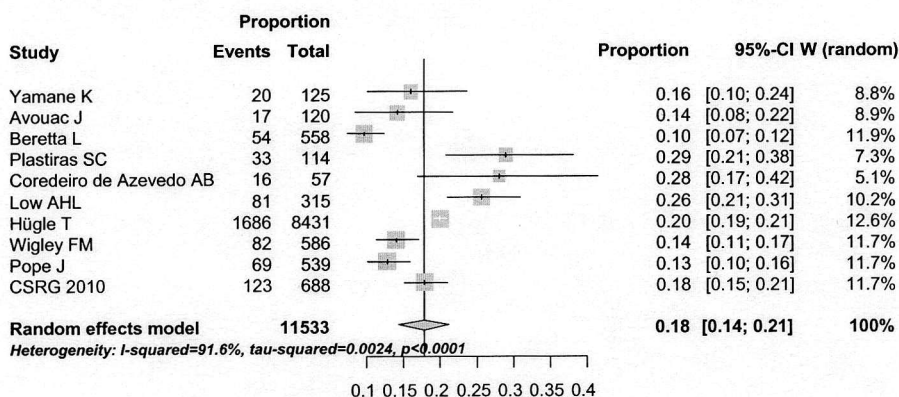


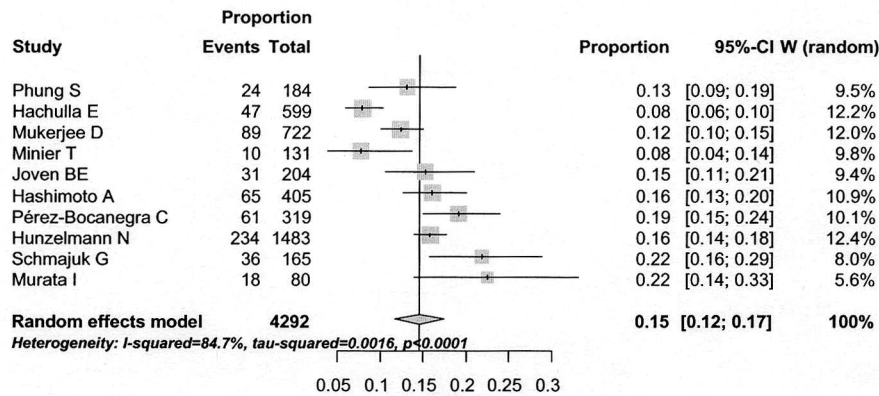
Figure 2. Forest plots of some organ complications in scleroderma.

only a couple of studies where data could be pooled. Pooled studies of at least 4 cohorts for various organ prevalences were analyzed (Table 3), whereas the rates may be less certain and less generalizable in the analyses that included fewer studies. Some definitions of organ involvement had very few studies. There was also statistical heterogeneity ( $I^2 > 50\%$ ) in some analyses and results could not be pooled. There may have been publication bias, because some of the funnel plots appeared to have asymmetry, and did not resemble inverted funnels, especially those with fewer or smaller studies (data not shown). Even some larger studies had asymmetrical funnel plots. This may be due to clinical and methodological heterogeneity. Smaller studies or studies from tertiary centers might have been performed in a selected SSc population.

The estimated prevalence of PAH defined by RHC in SSc of 15% (95% CI 12%–17%) was slightly higher than that from a metaanalysis from 5 studies (9%, 95% CI 6%–12%)<sup>21</sup>. The prevalence of PH in SSc by echocardiography (14%, 95% CI 8%–20%), or by sPAP > 35 mm Hg (14%, 95% CI 9%–19%), or by sPAP > 40 or 45 mm Hg (18%, 95% CI 14%–21%) in our study was roughly consistent with the prevalence of suspected PH by echocardiography leading to RHC (13%, 95% CI 7%–23%) reported by Avouac, *et al*<sup>21</sup>.

Some studies had higher than expected prevalence, such as the pooled prevalence of severe cardiac involvement. Also, some frequencies were higher in more severe organ involvement, such as for PH in SSc with sPAP > 35 mm Hg, which should be more frequent than that of sPAP > 40 mm

## PAH in scleroderma by right heart catheterization



## Myositis in scleroderma

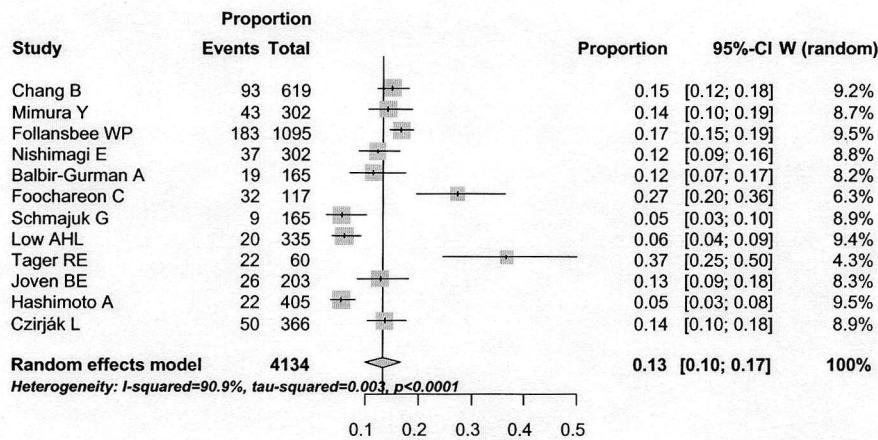


Figure 2 continued. Organ complications in scleroderma.

Hg or 50 mm Hg. This can be due to selection bias of patients included in the studies and we could not adjust for this in the analyses.

Another limitation is that a pooled prevalence could not be calculated for every manifestation because some analyses included only 1 publication and different definitions of significant organ involvement were used in the publications (e.g., “severe skin sclerosis” used different cutpoints of the mRSS). The strength of our study is the large number of articles that could be pooled for various complications, and only cohorts that were relatively large were included. Not every organ system fits neatly into the 15% rule, such as GI involvement, RP, SRC (only in the early dcSSc subset), clinical congestive heart failure, etc. However, we observed that the 15% rule is often generalizable. SRC in dcSSc had a wide CI, so the point estimate may actually be different from 15%, but it overlaps 15%.

Many complications in SSc, including ILD as measured

by a low percentage-predicted FVC, PAH, diastolic dysfunction, arrhythmias, inflammatory arthritis, myositis, SS, and digital ulcers and their complications, occur in about 15% of patients. SRC is uncommon overall but occurs in almost 15% of the dcSSc subset. The 15% rule of SSc organ involvement may help clinicians be aware of the frequency of many features of SSc.

### ACKNOWLEDGMENT

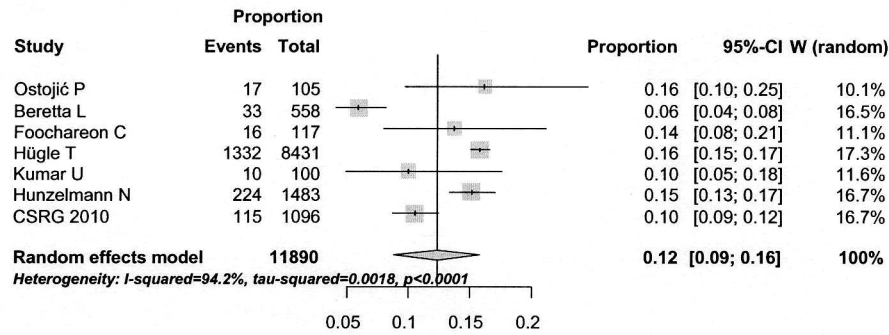
The authors thank Dr. Heather Thiessen Philbrook for creation of forest plots.

### APPENDIX 1.

*List of study collaborators.* Investigators of the Canadian Scleroderma Research Group (CSRG): J. Markland, Saskatoon, Saskatchewan; D. Robinson, Winnipeg, Manitoba; N. Jones, Edmonton, Alberta; N. Khalidi, Hamilton, Ontario; P. Docherty, Moncton, New Brunswick; E. Kaminska, Hamilton, Ontario; A. Masetto, Sherbrooke, Quebec; E. Sutton, Halifax, Nova Scotia; J-P. Mathieu, Montreal, Quebec; M. Hudson, Montreal,



## Inflammatory arthritis in scleroderma



## The frequency of current digital ulcers in scleroderma

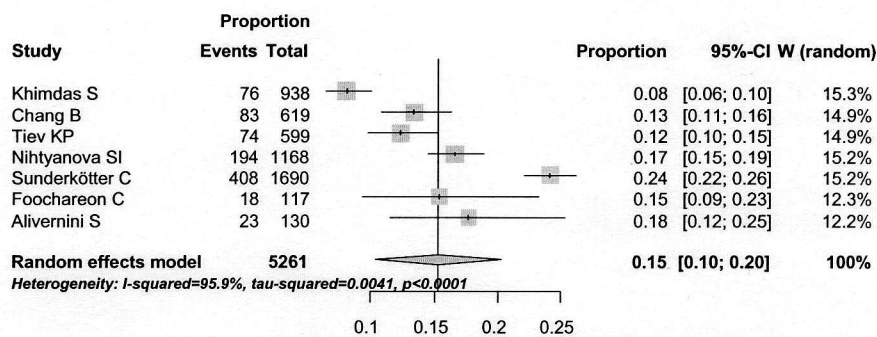


Figure 2 continued. Organ complications in scleroderma.

Quebec; S. Ligier, Montreal, Quebec; T. Grodzicky, Montreal, Quebec; S. LeClercq, Calgary, Alberta; C. Thorne, Newmarket, Ontario; M. Fritzler, Advanced Diagnostics Laboratory, Calgary, Alberta.

## REFERENCES

- LeRoy EC, Black C, Fleischmajer R, Jablonska S, Krieg T, Medsger TA Jr, et al. Scleroderma (systemic sclerosis): classification, subsets, and pathogenesis. *J Rheumatol* 1988; 15:202-5.
- Steen VD, Medsger TA Jr. Epidemiology and natural history of systemic sclerosis. *Rheum Dis Clin North Am* 1990;16:1-10.
- Steen VD. Clinical manifestations of systemic sclerosis. *Semin Cutan Med Surg* 1998;17:48-54.
- Steen VD, Medsger TA Jr. Severe organ involvement in systemic sclerosis with diffuse scleroderma. *Arthritis Rheum* 2000;43:2437-44.
- Bohan A, Peter JB. Polymyositis and dermatomyositis (second of two parts). *N Engl J Med* 1975;292:403-7.
- Bohan A, Peter JB. Polymyositis and dermatomyositis (first of two parts). *N Engl J Med* 1975;292:344-7.
- Von Elm E, Altman DG, Egger M, Pocock SJ, Gøtzsche PC, Vandenbroucke JP; STROBE Initiative. Strengthening the Reporting of Observational Studies in Epidemiology (STROBE) statement: guidelines for reporting observational studies. *BMJ* 2007;335:806-8.
- Vandenbroucke JP, von Elm E, Altman DG, Gøtzsche PC, Mulrow CD, Pocock SJ, et al. Strengthening the Reporting of Observational Studies in Epidemiology (STROBE): explanation and elaboration. *Epidemiology* 2007;18:805-35.
- DerSimonian R, Laird N. Meta-analysis in clinical trials. *Control Clin Trials* 1986;7:177-88.
- Walker UA, Tyndall A, Czirkák L, Denton C, Farge-Bancel D, Kowal-Bielecka O, et al. Clinical risk assessment of organ manifestations in systemic sclerosis: a report from the EULAR Scleroderma Trials And Research group database. *Ann Rheum Dis* 2007;66:754-63.
- Pérez-Bocanegra C, Simeón-Aznar CP, Campillo M, Fonollosa-Pla V, Vilardell-Tarrés M. Age-related survival and clinical features in systemic sclerosis patients older or younger than 65 at diagnosis. *Rheumatology* 2010;49:1112-7.
- De Marco PJ, Weisman MH, Seibold JR, Furst DE, Wong WK, Hurwitz EL, et al. Predictors and outcomes of scleroderma renal crisis: The high-dose versus low-dose D-penicillamine in early diffuse systemic sclerosis trial. *Arthritis Rheum* 2002;46:2983-9.
- Hashimoto A, Tejima S, Tono T, Suzuki M, Tanaka S, Matsui T, et al. Predictors of survival and causes of death in Japanese patients with systemic sclerosis. *J Rheumatol* 2011;38:1931-9.
- Montagna GL, Baruffo A, Maja L, Tirri E, Matrone C, Vatti M, et al. Scleroderma renal crisis analysis of prevalence and outcome in a large Italian series. *J Clin Rheumatol* 1997;3:186-93.
- Walker JG, Ahern MJ, Smith MD, Coleman M, Pile K, Rischmueller M, et al. Scleroderma renal crisis: Poor outcome despite aggressive antihypertensive treatment. *Intern Med J* 2003;33:216-20.
- Coral-Alvarado P, Rojas-Villarraga A, Latorre MC, Mantilla RD, Restrepo JF, Pardo AL, et al. Risk factors associated with pulmonary arterial hypertension in Colombian patients with

Table 3. Summary of frequency of organ complications in systemic sclerosis (SSc).

Severe Organ Involvement	No.*	Frequency, %	95% CI
1. Scleroderma renal crisis (SRC)			
1.1 SRC in dcSSc	2,848	12	5–19
1.2 SRC in SSc	14,482	3	3–4
2. Severe cardiac involvement			
2.1 Cardiomyopathy in SSc <sup>†</sup>	7,700	3	1–6
2.2 Clinical congestive heart failure in SSc <sup>†</sup>	1,431	5	1–9
2.3 Congestive heart failure or symptomatic pericarditis/symptomatic arrhythmia/ cardiomyopathy in dcSSc <sup>†</sup>	1,178	13	10–17
2.4 Congestive heart failure or symptomatic pericarditis/symptomatic arrhythmia/ cardiomyopathy in SSc <sup>†</sup>	1,024	15	6–24
2.5 Diastolic dysfunction in SSc <sup>†</sup>	10,484	16	14–17
2.6 Symptomatic conduction system abnormality or arrhythmia attributable to scleroderma heart disease requiring treatment in SSc	11,140	17	14–21
2.7 Symptomatic pericarditis or moderate-large pericardial effusion in SSc <sup>†</sup>	1,302	3	1–5
3. Pulmonary hypertension (PH) & pulmonary artery hypertension (PAH)			
3.1 PH in SSc (echo)	6,571	14	8–20
3.2 PH in SSc (sPAP > 35 mm Hg) <sup>†</sup>	2,242	14	9–19
3.3 PH in SSc (sPAP > 40 or 45 mm Hg)	11,533	18	14–21
3.4 PH in SSc (sPAP > 50 or 55 mm Hg) <sup>†</sup>	691	19	5–32
3.5 PAH in SSc (right heart catheterization)	4,292	15	12–17
3.6 PH with pulmonary fibrosis in SSc <sup>†</sup>	5,021	11	4–19
4. Pulmonary restriction in SSc			
4.1 Forced vital capacity % predicted < 80% <sup>†</sup>	965	17	12–21
4.2 Forced vital capacity % predicted < 70% <sup>†</sup>	2,669	15	12–17
4.3 Forced vital capacity % predicted < 50% <sup>†</sup>	1,875	8	4–13
4.4 Total lung capacity % predicted < 80% <sup>†</sup>	2,102	23	22–25
5. Malabsorption, intestinal pseudoobstruction, hyperalimentation in SSc <sup>†</sup>	1,788	5	3–6
6. Severe musculoskeletal involvement			
6.1 Proximal muscle weakness in SSc <sup>†</sup>	9,670	24	17–30
6.2 Myopathy or myositis in dcSSc <sup>†</sup>	359	9	0–17
6.3 Myositis in SSc	4,134	13	10–17
7. Articular involvement			
7.1 Clinical arthritis in SSc	11,890	12	9–16
7.2 Radiographic change in those with clinical arthritis in SSc <sup>†</sup>	774	9	4–14
8. Digital ulcer and complications			
8.1 Prevalent digital ulcer in SSc	5,261	15	10–20
8.2 Current digital gangrene in SSc <sup>†</sup>	1,557	2	1–3
8.3 Digital amputation in SSc <sup>†</sup>	1,756	12	8–16
8.4 Hospitalization due to digital vascular ischemic complication or overall digital vascular ischemic complications in SSc <sup>†</sup>	3,248	13	6–21
9. Overlap Sjögren's syndrome in SSc <sup>†</sup>	1,903	13	10–16

\* Number of patients from included studies; <sup>†</sup> overall estimated prevalence that metaanalysis was conducted for ≤ 4 studies. dcSSc: diffuse cutaneous systemic sclerosis; lcSSc: limited cutaneous systemic sclerosis; PH: pulmonary hypertension; PAH: pulmonary artery hypertension; sPAP: systolic pulmonary artery pressure.

- systemic sclerosis: review of the literature. *J Rheumatol* 2008;35:244-50.
17. Khimdas S, Harding S, Bonner A, Zummer B, Baron M, Pope J; Canadian Scleroderma Research Group. Associations with digital ulcers in a large cohort of systemic sclerosis: results from the Canadian Scleroderma Research Group registry. *Arthritis Care Res* 2011;63:142-9.
  18. Nagy Z, Czirják L. Predictors of survival in 171 patients with systemic sclerosis (scleroderma). *Clin Rheumatol* 1997;16:454-60.
  19. Allanore Y, Meune C, Vonk MC, Airo P, Hachulla E, Caramaschi P, et al. Prevalence and factors associated with left ventricular dysfunction in the EULAR Scleroderma Trial and Research group (EUSTAR) database of patients with systemic sclerosis. *Ann Rheum Dis* 2010;69:218-21.
  20. Hunzelmann N, Genth E, Krieg T, Lehmacher W, Melchers I, Meurer M, et al. The registry of the German Network for Systemic Scleroderma: frequency of disease subsets and patterns of organ involvement. *Rheumatology* 2008;47:1185-92.
  21. Avouac J, Airò P, Meune C, Beretta L, Dieude P, Caramaschi P, et al. Prevalence of pulmonary hypertension in systemic sclerosis in European Caucasians and metaanalysis of 5 studies. *J Rheumatol* 2010;37:2290-8.
  22. Avouac J, Airò P, Dieude P, Caramaschi P, Tiev K, Diot E, et al. Associated autoimmune diseases in systemic sclerosis define a subset of patients with milder disease: results from 2 large cohorts of European Caucasian patients. *J Rheumatol* 2010;37:608-14.
  23. Czirják L, Kumánovics G, Varjú C, Nagy Z, Pákozdi A, Szekanez Z, et al. Survival and causes of death in 366 Hungarian patients

- with systemic sclerosis. *Ann Rheum Dis* 2008;67:59-63.
24. Nishimagi E, Tochimoto A, Kawaguchi Y, Satoh T, Kuwana M, Takagi K, et al. Characteristics of patients with early systemic sclerosis and severe gastrointestinal tract involvement. *J Rheumatol* 2007;34:2050-5.
  25. Foocharoen C, Mahakkanukrauh A, Suwannaroj S, Nanagara R. Spontaneous skin regression and predictors of skin regression in Thai scleroderma patients. *Clin Rheumatol* 2011;30:1235-40.
  26. Schmajuk G, Bush TM, Burkham J, Krishnan E, Chung L. Characterizing systemic sclerosis in Northern California: focus on Asian and Hispanic patients. *Clin Exp Rheumatol* 2009;27:22-5.
  27. Low AH, Johnson SR, Lee P. Ethnic influence on disease manifestations and autoantibodies in Chinese-descent patients with systemic sclerosis. *J Rheumatol* 2009;36:787-93.
  28. Picha L, Pakas I, Guialis A, Moutsopoulos HM, Vlachoyiannopoulos PG. Comparative qualitative and quantitative analysis of scleroderma (systemic sclerosis) serologic immunoassays. *J Autoimmun* 2008;31:166-74.
  29. Shand L, Lunt M, Nihtyanova S, Hoseini M, Silman A, Black CM, et al. Relationship between change in skin score and disease outcome in diffuse cutaneous systemic sclerosis: application of a latent linear trajectory model. *Arthritis Rheum* 2007;56:2422-31.
  30. Nguyen C, Bérezné A, Baubert T, Mestre-Stanislas C, Rannou F, Papelard A, et al. Association of gender with clinical expression, quality of life, disability, and depression and anxiety in patients with systemic sclerosis. *PLoS One* 2011;6:e17551.
  31. Hügle T, Schuetz P, Daikeler T, Tyndall A, Matucci-Cerinic M, Walker UA, et al. Late-onset systemic sclerosis — A systematic survey of the EULAR scleroderma trials and research group database. *Rheumatology* 2011;50:161-5.
  32. Minier T, Nagy Z, Bálint Z, Farkas H, Radics J, Kumánovics G, et al. Construct validity evaluation of the European Scleroderma Study Group activity index, and investigation of possible new disease activity markers in systemic sclerosis. *Rheumatology* 2010;49:1133-45.
  33. Joven BE, Almodovar R, Carmona L, Carreira PE. Survival, causes of death, and risk factors associated with mortality in Spanish systemic sclerosis patients: results from a single university hospital. *Semin Arthritis Rheum* 2010;39:285-93.
  34. Chang B, Wigley FM, White B, Wise RA. Scleroderma patients with combined pulmonary hypertension and interstitial lung disease. *J Rheumatol* 2003;30:2398-405.
  35. Follansbee WP, Zerbe TR, Medsger TA Jr. Cardiac and skeletal muscle disease in systemic sclerosis (scleroderma): a high risk association. *Am Heart J* 1993;125:194-203.
  36. de Groote P, Gressin V, Hachulla E, Carpentier P, Guillemin L, Kahan A, et al. Evaluation of cardiac abnormalities by Doppler echocardiography in a large nationwide multicentric cohort of patients with systemic sclerosis. *Ann Rheum Dis* 2008;67:31-6.
  37. Hanitsch LG, Burmester GR, Witt C, Hunzelmann N, Genth E, Krieg T, et al. Skin sclerosis is only of limited value to identify SSc patients with severe manifestations — an analysis of a distinct patient subgroup of the German Systemic Sclerosis Network (DNSS) Register. *Rheumatology* 2009;48:70-3.
  38. Poormoghim H, Poorkarim MA, Lakeh MM, Heshmati BN, Almasi S, Hakim M. Preliminary study of cardiovascular manifestations and cardiac severity scale in 58 patients with systemic sclerosis in Iran using the Medsger scale. *J Tehran Heart Cent* 2010;5:14-8.
  39. Morelli S, Sgreccia A, Ferrante L, Barbieri C, Bernardo ML, Perrone C, et al. Relationships between electrocardiographic and echocardiographic findings in systemic sclerosis (scleroderma). *Int J Cardiol* 1996;57:151-60.
  40. Alivernini S, De Santis M, Tulusso B, Mannocci A, Bosello SL, Peluso G, et al. Skin ulcers in systemic sclerosis: determinants of presence and predictive factors of healing. *J Am Acad Dermatol* 2009;60:426-35.
  41. Aguglia G, Sgreccia A, Bernardo ML, Carmenini E, Giusti De Marle M, Reali A, et al. Left ventricular diastolic function in systemic sclerosis. *J Rheumatol* 2001;28:1563-7.
  42. Launay D, Mouthon L, Hachulla E, Pagnoux C, de Groote P, Remy-Jardin M, et al. Prevalence and characteristics of moderate to severe pulmonary hypertension in systemic sclerosis with and without interstitial lung disease. *J Rheumatol* 2007;34:1005-11.
  43. Pope JE, Lee P, Baron M, Dunne J, Smith D, Docherty PS, et al. Prevalence of elevated pulmonary arterial pressures measured by echocardiography in a multicenter study of patients with systemic sclerosis. *J Rheumatol* 2005;32:1273-8.
  44. Cox SR, Walker JG, Coleman M, Rischmueller M, Proudman S, Smith MD, et al. Isolated pulmonary hypertension in scleroderma. *Intern Med J* 2005;35:28-33.
  45. Phung S, Strange G, Chung LP, Leong J, Dalton B, Roddy J, et al. Prevalence of pulmonary arterial hypertension in an Australian scleroderma population: screening allows for earlier diagnosis. *Intern Med J* 2009;39:682-91.
  46. Yamane K, Ihn H, Asano Y, Yazawa N, Kubo M, Kikuchi K, et al. Clinical and laboratory features of scleroderma patients with pulmonary hypertension. *Rheumatology* 2000;39:1269-71.
  47. Hachulla E, Gressin V, Guillemin L, Carpentier P, Diot E, Sibilia J, et al. Early detection of pulmonary arterial hypertension in systemic sclerosis: a French nationwide prospective multicenter study. *Arthritis Rheum* 2005;52:3792-800.
  48. Mukerjee D, St. George D, Coleiro B, Knight C, Denton CP, Davar J, et al. Prevalence and outcome in systemic sclerosis associated pulmonary arterial hypertension: application of a registry approach. *Ann Rheum Dis* 2003;62:1088-93.
  49. Vonk MC, Broers B, Heijdra YF, Ton E, Snijder R, van Dijk AP, et al. Systemic sclerosis and its pulmonary complications in The Netherlands: an epidemiological study. *Ann Rheum Dis* 2009;68:961-5.
  50. Avouac J, Guerini H, Wipff J, Assous N, Chevrot A, Kahan A, et al. Radiological hand involvement in systemic sclerosis. *Ann Rheum Dis* 2006;65:1088-92.
  51. Beretta L, Santaniello A, Cappiello F, Chawla NV, Vonk MC, Carreira PE, et al. Development of a five-year mortality model in systemic sclerosis patients by different analytical approaches. *Clin Exp Rheumatol* 2010;28:S18-27.
  52. Plastiras SC, Karadimitrakis SP, Kampolis C, Moutsopoulos HM, Tzelepis GE. Determinants of pulmonary arterial hypertension in scleroderma. *Semin Arthritis Rheum* 2007;36:392-6.
  53. Cordeiro de Azevedo AB, Sampaio-Barros PD, Torres RM, Moreira C. Prevalence of pulmonary hypertension in systemic sclerosis. *Clin Exp Rheumatol* 2005;23:447-54.
  54. Murata I, Takenaka K, Yoshinoya S, Kikuchi K, Kiuchi T, Tanigawa T, et al. Clinical evaluation of pulmonary hypertension in systemic sclerosis and related disorders. A Doppler echocardiographic study of 135 Japanese patients. *Chest* 1997;111:36-43.
  55. Tager RE, Tikly M. Clinical and laboratory manifestations of systemic sclerosis (scleroderma) in Black South Africans. *Rheumatology* 1999;38:397-400.
  56. Kumar U, Ramteke R, Yadav R, Ramam M, Handa R, Kumar A. Prevalence and predictors of pulmonary artery hypertension in systemic sclerosis. *J Assoc Physicians India* 2008;56:413-7.
  57. Hachulla E, Carpentier P, Gressin V, Diot E, Allanore Y, Sibilia J, et al. Risk factors for death and the 3-year survival of patients with systemic sclerosis: the French ItinérAIR-Sclérodemie study. *Rheumatology* 2009;48:304-8.
  58. Steen VD, Conte C, Owens GR, Medsger TA Jr. Severe restrictive lung disease in systemic sclerosis. *Arthritis Rheum* 1994;37:1283-9.
  59. Ostojic P, Damjanov N. Different clinical features in patients with

- limited and diffuse cutaneous systemic sclerosis. *Clin Rheumatol* 2006;25:453-7.
60. Duchini A, Sessoms SL. Gastrointestinal hemorrhage in patients with systemic sclerosis and CREST syndrome. *Am J Gastroenterol* 1998;93:1453-6.
  61. Parodi A, Sessarego M, Greco A, Bazzica M, Filaci G, Setti M, et al. Small intestinal bacterial overgrowth in patients suffering from scleroderma: clinical effectiveness of its eradication. *Am J Gastroenterol* 2008;103:1257-62.
  62. Szamosi S, Szekanez Z, Szucs G. Gastrointestinal manifestations in Hungarian scleroderma patients. *Rheumatol Int* 2006;26:1120-4.
  63. Marie I, Ducrotté P, Denis P, Menard JF, Levesque H. Small intestinal bacterial overgrowth in systemic sclerosis. *Rheumatology* 2009;48:1314-9.
  64. Mimura Y, Ihn H, Jinnin M, Asano Y, Yamane K, Tamaki K. Clinical and laboratory features of scleroderma patients developing skeletal myopathy. *Clin Rheumatol* 2005;24:99-102.
  65. Balbir-Gurman A, Braun-Moscovici Y. Scleroderma overlap syndrome. *Isr Med Assoc J* 2011;13:14-20.
  66. Avouac J, Walker U, Tyndall A, Kahan A, Matucci-Cerinic M, Allanore Y, et al. Characteristics of joint involvement and relationships with systemic inflammation in systemic sclerosis: results from the EULAR Scleroderma Trial and Research Group (EUSTAR) database. *J Rheumatol* 2010;37:1488-501.
  67. Jinnin M, Ihn H, Yamane K, Asano Y, Yazawa N, Tamaki K. Clinical features of patients with systemic sclerosis accompanied by rheumatoid arthritis. *Clin Exp Rheumatol* 2003;21:91-4.
  68. La Montagna G, Sodano A, Capurro V, Malesci D, Valentini G. The arthropathy of systemic sclerosis: a 12 month prospective clinical and imaging study. *Skeletal Radiol* 2005;34:35-41.
  69. Tiev KP, Diot E, Clerson P, Dupuis-Siméon F, Hachulla E, Hatron PY, et al. Clinical features of scleroderma patients with or without prior or current ischemic digital ulcers: Post-hoc analysis of a nationwide multicenter cohort (ItinérAIR-Sclérodemie). *J Rheumatol* 2009;36:1470-6.
  70. Wigley FM, Wise RA, Miller R, Needleman BW, Spence RJ. Anticentromere antibody as a predictor of digital ischemic loss in patients with systemic sclerosis. *Arthritis Rheum* 1992;35:688-93.
  71. Nihtyanova SI, Brough GM, Black CM, Denton CP. Clinical burden of digital vasculopathy in limited and diffuse cutaneous systemic sclerosis. *Ann Rheum Dis* 2008;67:120-3.
  72. Sunderkötter C, Herrgott I, Brückner C, Moinzadeh P, Pfeiffer C, Gerss J, et al. Comparison of patients with and without digital ulcers in systemic sclerosis: detection of possible risk factors. *Br J Dermatol* 2009;160:835-43.
  73. Harrison BJ, Silman AJ, Hider SL, Herrick AL. Cigarette smoking as a significant risk factor for digital vascular disease in patients with systemic sclerosis. *Arthritis Rheum* 2002;46:3312-6.
  74. Wangkaew S, Kasitanon N, Sivasomboon C, Wichainun R, Sukitawut W, Louthrenoo W. Sicca symptoms in Thai patients with rheumatoid arthritis, systemic lupus erythematosus and scleroderma: a comparison with age-matched controls and correlation with disease variables. *Asian Pac J Allergy Immunol* 2006;24:213-21.
  75. Swaminathan S, Goldblatt F, Dugar M, Gordon TP, Roberts-Thomson PJ; South Australian Cohort. Prevalence of sicca symptoms in a South Australian cohort with systemic sclerosis. *Intern Med J* 2008;38:897-903.
  76. Wigley FM, Lima JA, Mayes M, McLain D, Chapin JL, Ward-Able C. The prevalence of undiagnosed pulmonary arterial hypertension in subjects with connective tissue disease at the secondary health care level of community-based rheumatologists (the UNCOVER study). *Arthritis Rheum* 2005;52:2125-32.
  77. Ingraham KM, Steen VD. Morbidity of digital tip ulcerations in scleroderma [abstract]. *Arthritis Rheum* 2006;54 Suppl:P57.
  78. Coral-Alvarado P, Pardo AL, Castano-Rodriguez N, Rojas-Villarraga A, Anaya JM. Systemic sclerosis: a worldwide global analysis. *Clin Rheumatol* 2009;28:757-65.
  79. Steen V, Domsic RT, Lucas M, Fertig N, Medsger TA Jr. A clinical and serologic comparison of African American and Caucasian patients with systemic sclerosis. *Arthritis Rheum* 2012;64:2986-94.
  80. McNearney TA, Reveille JD, Fischbach M, Friedman AW, Lisse JR, Goel N, et al. Pulmonary involvement in systemic sclerosis: associations with genetic, serologic, sociodemographic, and behavioral factors. *Arthritis Rheum* 2007;57:318-26.
  81. Beall AD, Nietert PJ, Taylor MH, Mitchell HC, Shaftman SR, Silver RM, et al. Ethnic disparities among patients with pulmonary hypertension associated with systemic sclerosis. *J Rheumatol* 2007;34:1277-82.
  82. Reveille JD, Fischbach M, McNearney T, Friedman AW, Aguilar MB, Lisse J, et al; GENISOS Study Group. Systemic sclerosis in 3 US ethnic groups: a comparison of clinical, socioeconomic, serologic, and immunogenetic determinants. *Semin Arthritis Rheum* 2001;30:332-46.
  83. Nietert PJ, Mitchell HC, Bolster MB, Shaftman SR, Tilley BC, Silver RM. Racial variation in clinical and immunological manifestations of systemic sclerosis. *J Rheumatol* 2006;33:263-8.
  84. Mansour S, Bonner A, Muangchan C, Hudson M, Baron M, Pope JE, et al. Low socioeconomic status (measured by education) and outcomes in systemic sclerosis: data from the Canadian Scleroderma Research Group. *J Rheumatol* 2013;40:447-54.
  85. Denton CP, Krieg T, Guillemin L, Schwierin B, Rosenberg D, Silkey M, et al. Demographic, clinical and antibody characteristics of patients with digital ulcers in systemic sclerosis: data from the DUO Registry. *Ann Rheum Dis* 2012;71:718-21.
  86. Simeón-Aznar CP, Fonollosa-Plá V, Tolosa-Vilella C, Espinosa-Garriga G, Ramos-Casals M, Campillo-Grau M, et al. Registry of the Spanish network for systemic sclerosis: clinical pattern according to cutaneous subsets and immunological status. *Semin Arthritis Rheum* 2012;41:789-800.