

Racial Disparities in SLE

## Timing and Predictors of Incident Cardiovascular Disease in Systemic Lupus

### Erythematosus: Risk Occurs Early and Highlights Racial Disparities

Shivani Garg MD MS<sup>1</sup>, Christie M. Bartels MD MS<sup>1</sup>, Gaobin Bao MPH<sup>2</sup>, Charles G. Helmick MD<sup>3</sup>, Cristina Drenkard MD PhD<sup>2,4</sup>, S. Sam Lim MD MPH<sup>2,4</sup>

#### Author affiliations

<sup>1</sup>University of Wisconsin School of Medicine and Public Health, Department of Medicine, Rheumatology Division, Madison, WI, USA; <sup>2</sup>Emory University School of Medicine, Department of Medicine, Division of Rheumatology, Atlanta, Georgia, USA; <sup>3</sup>Centers for Disease Control and Prevention, Division of Population Health; <sup>4</sup> Emory University Rollins School of Public Health, Department of Epidemiology

Abstract Word Limit: 250 (Max. 250)

Manuscript Word Limit: 3500 (Max. 3500)

Tables and figures: 6 (Max. 6)

Supplementary Files: 6; References: 49 (Max. 50)

Corresponding Author:

Shivani Garg, MD MS

Assistant Professor, Dept. of Medicine, Rheumatology Division

University of Wisconsin School of Medicine & Public Health

1685 Highland Ave, MFCB #4122, Madison, WI 53705; 240-400-0889;

[sgarg@medicine.wisc.edu](mailto:sgarg@medicine.wisc.edu)

No conflict of interest. The Georgians Organized Against Lupus (GOAL) Cohort was supported by 3U58DP001487-05W2 and U01DP05119 (Centers for Disease Control and Prevention).

Disclaimer: The findings and conclusions in this report are those of the authors and do not necessarily represent the official position of the Centers for Disease Control and Prevention.

This study was presented at Plenary Session-I at the Annual American College of Rheumatology Meeting in Atlanta, November 2019.

**Keywords:** SLE, Incident cardiovascular disease, Early risk, Racial disparities, Predictors

## Racial Disparities in SLE

**ABSTRACT**

**Objectives:** Systemic lupus erythematosus (SLE) affects Black people two to three times more frequently than non-Black people and is associated with higher morbidity and mortality. Four predominantly non-Black SLE cohorts highlighted that cardiovascular disease (CVD) is no longer primarily a late complication of SLE. This study assessed the timing and predictors of incident CVD in a predominantly Black population-based SLE cohort.

**Methods:** Incident SLE cases from the population-based Georgia Lupus Registry were validated as having a CVD event through review of medical records and matching with the Georgia Hospital Discharge Database and the National Death Index. The surveillance period for an incident CVD event was over a 15-year period, starting from two years prior to SLE diagnosis.

**Results:** Among 336 people with SLE (75% Black), 56 (17%) had an incident CVD event. The frequency of CVD events peaked in the second and eleventh year after SLE diagnosis. There was 7-fold higher risk of incident CVD over the entire 15-year period, 19-fold in the first 12 years, in Black compared to non-Black people with SLE. Black people with SLE ( $p < 0.0001$ ) and those with discoid rash (HR 3.2, 95% CI 1.4-7.1) had higher risk of incident CVD events.

**Conclusion:** The frequency of incident CVD events peaked in the second and the eleventh year after SLE diagnosis. Being Black or having a discoid rash were strong predictors of an incident CVD event. Surveillance for CVD and preventive interventions, directed particularly towards Black people with recent SLE diagnoses, are needed to reduce racial disparities.

## Racial Disparities in SLE

**INTRODUCTION**

Systemic lupus erythematosus (SLE) is a leading cause of mortality in young women, with a three- to five-fold higher mortality rate and an accelerated risk of cardiovascular disease (CVD) compared with the general population.<sup>1-3</sup> Previously, a bimodal distribution of mortality in SLE was observed, with deaths early in the disease course related to active SLE or infection and deaths later (>10 years) associated with CVD.<sup>4</sup> Also previously reported was a 16 to 52-fold higher risk of CVD in younger patients with SLE compared with healthy controls, with risk peaking around year 10.<sup>5</sup> More recently, four predominantly non-Black cohorts challenged the paradigm of CVD being mostly a late complication of SLE.<sup>6-9</sup> These studies also reported a higher risk of CVD around the time of SLE diagnosis.<sup>6,7</sup>

It is important to examine findings in communities of color given the significant racial disparities that exist, particularly in Black women. SLE afflicts Black women at a three-fold higher rate and at a significantly younger age compared with non-Black women.<sup>10,11</sup> Black women have a three-fold higher risk of developing nephritis compared with White women with SLE.<sup>12</sup> Black people with SLE have a three times higher risk of developing end stage renal disease (ESRD) compared with White people with SLE (15.3% vs. 4.5%).<sup>10</sup> Black women with SLE have three times higher risk of early death compared with Black women from the general population.<sup>13</sup> Moreover, Black people in the general population have higher rates of fatal coronary heart disease and stroke than White people after controlling for age.<sup>14,15</sup> However, most SLE studies of CVD have been in predominantly White cohorts,<sup>5-7,16-18</sup> limiting the generalizability of the findings.<sup>11-13</sup> This study assessed the timing and predictors of incident CVD events in a population-based cohort of predominantly Black people with incident SLE over a 15-year period.

**METHODS**

## Racial Disparities in SLE

The Georgia Lupus Registry (GLR) is a Centers for Disease Control and Prevention supported population-based registry of residents of Atlanta, Georgia, meeting classification criteria for SLE. The GLR methods are described in detail elsewhere.<sup>11</sup> Briefly, the Georgia Department of Public Health (GA DPH) designated Emory University as its agent, allowing investigators to utilize the public health surveillance exemption to the Health Insurance Portability and Accountability Act Privacy Rule to obtain protected health information, including review of medical records, without written consent and ascertain cases on a population level.<sup>19</sup> The GLR protocol was reviewed and approved by the Institutional Review Boards at Emory University and the GA DPH (IRB #: IRB00003656).

The primary sources of case ascertainment included hospitals, rheumatologists, nephrologists and dermatologists in/around the catchment area. Administrative databases were queried for billing codes for SLE and related conditions. Other sources included laboratories and queries of other population databases. Medical records were abstracted and regular data quality assessments were conducted.

*SLE Case Validation:* Incident SLE cases were identified in the years 2002-2004 and defined as meeting either the 1997 update of the 1982 American College of Rheumatology (ACR) revised classification criteria for SLE or meeting three ACR criteria with a documented SLE diagnosis by the patient's board-certified rheumatologist.<sup>20,21</sup>

*End-Stage Renal Disease (ESRD):* Validated SLE cases were matched with the United States Renal Data System database for 2002–2015 to capture ESRD after SLE diagnosis.

*Race and Ethnicity:* Race/ethnicity was defined as reported in medical and administrative records and included physician or patient self-identified Black, White, Asian, and Hispanic groups. Very few sites reported race and ethnicity as separate categories, or included other

## Racial Disparities in SLE

racial/ethnic groups or mixed race. Less than 5% Hispanic ethnicity was recorded; thus groups were analyzed by race only (Supplementary File A).

*CVD Event Ascertainment and Validation:* Incident SLE cases from the GLR from 2002-04 were matched to the Georgia Hospital Discharge Database from 2000-17 and the National Death Index 2002-2017 capturing all hospitalizations throughout the state and deaths across the nation. Surveillance for CVD events started 2 years prior to SLE diagnosis and continued for 13 years after diagnosis. CVD-related hospitalizations and deaths were identified following published algorithms using the first three codes for billing at hospitalization or cause of death.<sup>22,23</sup> CVD events were defined as: 1) ischemic heart disease, including myocardial infarction, coronary artery revascularization, abnormal stress test or echocardiogram,  $\geq 50\%$  abnormal angiogram and events documented by a cardiologist,<sup>24,25</sup> 2) cerebrovascular disease including thrombotic and ischemic stroke, and transient ischemic attack (TIA),<sup>26</sup> and 3) peripheral vascular disease (PVD), including abnormal ankle-brachial index, abnormal peripheral angiography, limb ischemia undergoing bypass or angioplasty, or documented by a surgeon.<sup>27,28</sup> Patients with baseline CVD were excluded and only the first event was included in the analysis.

### Analysis

Descriptive results were reported as means  $\pm$  standard deviations for normally distributed data or medians with ranges for data that were not normally distributed. The 15-year surveillance period was divided into three, based on the distribution of CVD events: Pre-SLE (2 years before SLE diagnosis until SLE diagnosis), Initial (SLE diagnosis through the 10<sup>th</sup> year after diagnosis) and Late (the 11<sup>th</sup> through the 13<sup>th</sup> year after SLE diagnosis) Periods (Figure 1).

We annualized rates of incident CVD events over the 15-year surveillance period. A particular period of incident CVD events was defined by the start of a unique peak followed by a

## Racial Disparities in SLE

downward trend. Trends over time were compared with each other using interrupted time series analysis (ITSA).<sup>29</sup> We estimated coefficients using the Newey-West model and one-lag in each model and used the Cumby-Huizinga test for autocorrelation to confirm the correct model with lag one using STATA version 15.<sup>30</sup>

We categorized our data by age groups and sex similar to NHANES (2009-12) to calculate age-group and sex-specific rates of CVD and CVD subtypes in our lupus cohort. We then compared these rates with published rates of CVD subtypes categorized by age group and sex in general population over a 4-year period.<sup>31</sup> Additionally, we compared 7-year race-specific incidence of MI by age-group and sex in our lupus cases with the 7-year published incidence of MI (2005-12) and the annual rate of race-specific stroke in lupus vs. the healthy population.<sup>31</sup>

We examined Kaplan-Meier survival analyses by racial groups. We focused on two follow-up periods with accelerated risk of CVD occurrence derived from ITSA analysis: 1) the first 12-year follow-up period (Pre-SLE and Initial Periods, years -2 through 10 from SLE diagnosis) and 2) the full 15-year surveillance period. In these two periods, we examined predictors of incident CVD events using univariable and multivariable Cox proportional hazard models. Factors studied included sociodemographics, ESRD, and ACR criteria within one year of SLE diagnosis (Table 1).<sup>21</sup> ACR criterion with a p-value <0.1 in the univariable models, along with sociodemographics and ESRD were included in the multivariable analyses. We performed Schoenfeld residual analyses to verify that proportional hazards model assumptions were not violated for covariates.<sup>32</sup> We performed competing risk analysis to compare cumulative incidence of CVD events/deaths with cumulative incidence of non-CV deaths in our cohort. Lastly, we performed a separate analysis stratified by race to compare CVD events in Black with non-Black people with SLE.

We analyzed two racial groups: Black and non-Black. Non-Black people were mostly White along with a few Asian and Hispanic people. We performed a sensitivity analysis by excluding patients who did not report ethnicity and another sensitivity analysis stratifying Black and White

## Racial Disparities in SLE

racial groups and excluding the relatively few individuals from other groups. Additionally, we calculated e-values to quantify how extreme the bias from the unmeasured confounders would need to be to remove the effect of race on CVD incidence.<sup>33</sup> Statistical software R v3.4.1 was used.

## RESULTS

### Cohort Characteristics

Among 336 people with SLE, 87% were female with a mean age at SLE diagnosis of  $40 \pm 17$  years, of whom 75% identified as Black, 22% White and 3% Asian (Table 1 & Supplementary Table B). ACR SLE classification criteria within one year of diagnosis are shown in Table 1.

### Timing of Incident CVD Events

Figure 1 shows incident CVD event frequencies spanning 15 years of surveillance by CVD event type. A total of 56 patients with SLE (17%) had incident CVD: 33 were cerebrovascular disease, 20 were IHD, and three were PVD. The highest frequency of incident CVD occurred in the second year after SLE diagnosis, with 7 of 9 events being cerebrovascular disease. A total of 36 CVD events (including 5 CVD-related deaths) occurred in the first 12 years (years -2 through 10). Mean ages at SLE diagnosis and incident CVD event were  $45 \pm 17$  and  $49 \pm 17$  years. All but one event occurred in Black persons with SLE. Thirty one were women and 5 were men. A total of 20 CVD events (including 1 CVD-related death) occurred in the final three years of surveillance (years 11 through 13) with mean ages at SLE diagnosis and incident CVD of  $39 \pm 16$  and  $51 \pm 16$  years. Seventeen CVD events occurred in Black persons while 3 events occurred in White persons with SLE. Eighteen were women and 2 were men.

Using a 4-year follow-up we noted that the rate of stroke was higher in women and men with SLE <40 years old (2% and 3.9%) compared with published rates of stroke in the healthy population (0.7% and 0.02%). (Supplementary Table C). However, we did not note higher rates

## Racial Disparities in SLE

of IHD in our cohort as most IHD events occurred later in our cohort.<sup>31</sup> We found two times higher incidence of MI (4.3 vs. 2.3 per 1000 person years) and seven times high annual stroke rate in Black women with lupus <55 years old compared with healthy Black peers (23 vs. 2.9 per 1000 persons) (Supplementary Table D).

### **Determination of CVD Event Periods**

Using ITSA (Supplementary Figure E), three event periods emerged visually. Despite a visual breakpoint in year 2, this did not reach statistical significance (p-value = 0.06). Thus, the event periods were assigned as the first 12 years of surveillance (years -2 through 10) and the final 3 years of surveillance (years 11 through 13).

### **Kaplan-Meier (KM) Survival Analysis by Racial Groups**

KM survival analyses examined differences in the timing of incident CVD stratified by race across the 15-year surveillance period showing significantly accelerated incident CVD in Black compared with non-Black people with SLE (p-value <0.0001) (Figure 2). Our sensitivity analysis stratifying Black vs. White racial groups was similar (p-value <0.0001, data not shown). Finally, using competing risk analysis, we noted no statistical difference between cumulative incidence of CVD events including CV related deaths vs. cumulative incidence of non-CVD related deaths in our cohort (p-value = 0.97, Supplementary File F).

### **Multivariable Cox Modelled Predictors of Incident CVD in SLE**

In the first 12-year surveillance period (years -2 through 10), incident CVD event rates in Black people with SLE were 19-fold higher compared with non-Black people with SLE (Adjusted HR 19, 95% CI 3-142; Table 2). Age ≥65 years at SLE diagnosis, renal disorder and discoid rash were other predictors of CVD events. To estimate bias from unmeasured confounders, we found



## Racial Disparities in SLE

an e-value of 35 (e-values = 34.8), meaning confounders need to be associated with a 35-fold increase in CVD incidence for the causal effect of Black race on CVD to be truly null.

In the 15-year surveillance period, multivariable analysis (Table 3) showed that Black people with SLE had a seven-fold higher risk of incident CVD events over 15 years (Adjusted HR 7.3, 95% CI 2.4-22.0). Other multivariable predictors were age  $\geq 65$  years at SLE diagnosis, renal disorder or ESRD (Adjusted HR 2.1, 95% CI 1.1-4.1), and discoid rash (Adjusted HR 3.2, 95% CI 1.4-7.1). An e-value of 14 (e-values 14.1) was found for this period.

Next, in a smaller Cox model stratified by race, discoid rash (Adjusted HR 3.1, 95% CI 1.4-6.9, Table 4; only Black patients: Adjusted HR 2.3, 95% CI 1.2-4.4, data not shown), renal disorder or ESRD (Adjusted HR 2.1, 95% CI 1.1-4.0), and age  $\geq 65$  years at SLE diagnosis remained strong predictors of incident CVD (Table 4).

## DISCUSSION

To our knowledge, this is the first study that examined the risk, timing, and predictors of incident CVD events in a predominantly Black population-based incident SLE cohort. Incident CVD events occurred in 17% of our cohort over 15 years, with the highest frequency of CVD events in the second and the eleventh year after SLE diagnosis. We found that people identified as Black had the highest risk of incident CVD events, and we found discoid rash was a new predictor of incident CVD in SLE. We found a 19-fold higher incident CVD risk in Black people with SLE in the first 12 years of surveillance. Additionally, we found that the incidence of MI and annual stroke rate in Black women with SLE  $< 55$  years old were 2-7 times higher than peers.<sup>31</sup> Our study highlights racial disparities with a high rate of incident CVD events around the time of SLE diagnosis, particularly in Black patients, and points to discoid rash as a potential novel risk factor.

### **CVD-Related Morbidity and Mortality in SLE and Current Gaps in CVD Prevention**

With advances in early diagnosis and treatment, the overall prognosis of SLE disease has dramatically improved, yet CVD remains a major cause of morbidity and mortality in SLE.<sup>34</sup>

Relative to their peers, CVD is more common in premenopausal women with SLE, with a 50-fold higher CVD risk in ages 35-45,<sup>5</sup> and up to 16-fold higher risk of CVD-related mortality in patients <45 years.<sup>5,34</sup> A Medicaid study reported marked racial and ethnic variations in CVD events with 31% higher stroke occurrence in Black people with SLE compared to White people.<sup>35</sup> Yet, there is limited information on other population- and disease-based predictors, or on event timing to guide CVD prevention efforts in SLE.<sup>34,36</sup> Our study identifies patients with SLE who are at highest CVD risk to support further studies to implement and test CVD prevention efforts.

### **Timing of Accelerated CVD Risk in SLE**

Historically, accelerated CVD risk was considered to be a late complication in SLE.<sup>4,5,37-39</sup>

Multiple studies reported a median SLE duration of 7–10 years prior to incident CVD events.

<sup>4,5,37-39</sup> However, recent studies reported SLE as an independent CVD risk factor and noted a key role of inflammatory cytokines and subclinical inflammation in accelerating atherosclerosis around the time of SLE diagnosis.<sup>34,40</sup> Bartels et al. reported that the risk of CVD was two-fold higher even two years before SLE diagnosis in a cohort of predominantly non-Black patients with SLE.<sup>7</sup> Similar studies in predominantly non-Black cohorts reported that the risk of CVD starts early, up to two years before SLE diagnosis, reaching 2-6 fold.<sup>6-9</sup>

Our study highlights that incident CVD events peaked twice, during the second and the eleventh years after SLE diagnosis. The early CVD peak in our study could depict accelerated and premature atherosclerosis due to systemic inflammation from SLE or anti-phospholipid antibody mediated hypercoagulability leading to direct and indirect vascular intima damage.<sup>6-9</sup> Our

## Racial Disparities in SLE

findings in a predominantly Black SLE population-based cohort add to prior reports in predominantly non-Black populations, and challenge the paradigm that CVD is predominantly a late complication of SLE.<sup>6-9</sup> Therefore, these findings support clinical and public health efforts to implement CVD prevention early as well as late in the course of SLE disease, particularly in Black people with SLE.

### **Racial Disparities in CVD in SLE**

CVD, including heart disease and stroke, is leading cause of death in the U.S. and the largest cause of reduced life expectancy in Black adults, making it an important focus in SLE, which disproportionately afflicts Black people.<sup>10,11</sup> Prior multiethnic SLE cohorts have reported high CVD event rates in Black people. For example, the Hopkins SLE cohort reported a 2.7-fold higher observed CVD event rate vs. expected CVD event rate using Framingham risk calculation in Black people with lupus (RR 2.8, 95% CI 2.0-3.5).<sup>18</sup> Likewise, the LUMINA multiethnic SLE cohort reported a higher CVD event rate in Black people (42%) compared to other racial/ethnic groups (37% in White people, 20% in Hispanic ethnicity), which approached but did not reach statistical significance (p-value = 0.07).<sup>41</sup> Moreover, a Medicaid study highlighted that Black race predicted 31% higher stroke risk compared with White people with SLE.<sup>35</sup> Our study supports these findings and is among the first to report striking racial disparities in incident CVD in SLE: 19-fold higher incident CVD risk in Black people during the first 12 years of surveillance. The comparator rate in our cohort was 5%, similar to the rates previously reported in other predominantly White SLE cohorts (1.6%<sup>6</sup>, 3.6%<sup>42</sup>, 9%<sup>5,7</sup>). We were unable to control for traditional risk factors, in our cohort which could have confounded some of our findings. However, based on our e-values, unmeasured confounders, including traditional risk factors, would have to be associated with a 35-fold increase in incident CVD in Black people with lupus, to explain our observed hazards ratio.<sup>33</sup> Previous studies have reported that traditional risk factors conferred only a 2- to 5-fold increase in risk of CVD events in people

## Racial Disparities in SLE

with lupus.<sup>43</sup> Moreover, recent studies in SLE and non-SLE patients have shown that Black race alone predicts 31-60% higher CVD occurrence, even after controlling for traditional CVD risk factors, further supporting our findings.<sup>35,44</sup>

Additionally, we found that the incidence of MI and annual rate of stroke in Black women with SLE <55 years old were 2-7 times higher than healthy peers.<sup>31</sup> Thus, based on these findings and the magnitude of our 19-fold CVD risk estimate in Black people with SLE, we believe that traditional risk factors alone would insufficiently explain the heightened CVD risk, particularly in young Black people with SLE in our cohort. Moreover, observed disparities remain unchanged from previous studies, thus, calling for investigations of timely preventive strategies, particularly in young Black women.

### **Predictors of CVD in SLE**

There has been limited research on the role of discoid rash as a predictor of CVD. What is known is that Black people have five-fold higher incidence of discoid lupus than non-Black people with lupus.<sup>45</sup> Historically, discoid rash was considered to have better SLE prognosis, with lower prevalence of nephritis.<sup>46</sup> One study of 155 patients with subacute and chronic cutaneous lupus erythematosus (CCLE) reported a higher risk of stroke compared with a matched, non-cutaneous SLE cohort, even after controlling for smoking.<sup>47</sup> A Danish cohort reported a 1.3-fold higher risk of CVD in patients with CCLE with or without SLE, suggesting that chronic cutaneous inflammation may be a driver of low-grade systemic inflammation resulting in atherosclerosis.<sup>48</sup> Our study reported a strong association between the presence of discoid rash within the first year of diagnosis and CVD, independent of race, which supports previous findings that discoid rash may serve as a predictor of incident CVD in SLE.

Next, consistent with previous studies, we found that renal disorder or ESRD was a strong predictor of CVD supporting that severe renal inflammation could lead to direct and indirect damage to the vasculature contributing towards accelerated atherosclerosis.<sup>18</sup> Age >65 years at the time of SLE diagnosis was another strong predictor of incident CVD in our study. Our study

## Racial Disparities in SLE

and others note that despite milder SLE in late onset SLE, such groups face higher early CVD risk and mortality compared to peers.<sup>7</sup> This could be due to delays in diagnosing SLE due to late onset of symptoms or due to age accelerated CVD.<sup>7</sup>

Strengths of this study include the use of a large, predominantly Black, population-based incident registry with validated SLE cases and incident CVD events over 15 years of surveillance. We also acknowledge limitations. First, a few CVD events could be missed due to migration or unavailability of records. Second, White people with SLE were under-represented in our cohort however CVD rate in our cohort was similar to previously published CVD rates in other predominantly White SLE cohorts. Other racial groups were included in non-Black racial group due to small sample size. However, our sensitivity analysis stratified by White vs. Black racial groups revealed similar findings. Third, we did not individually match our cohort with the general population. Fourth, data for traditional CVD risk factors and anti-phospholipid syndrome (APS) were unavailable. Hydroxychloroquine and glucocorticoid use were not uniformly documented. We acknowledge that unmeasured APS, hydroxychloroquine, and other traditional risk factors may be confounders. Thus, we provided e-values that showed confounders need to be associated with a 35-fold increase in CVD incidence for the effect of Black race on CVD to be truly null. Further, a recent study highlighted that Black patients with lupus were 66% less likely to have clinically significant APS antibody profiles compared to White patients.<sup>49</sup> Finally, smoking status, a risk factor for both discoid rash and CVD, was not uniformly available, and the association between discoid rash and CVD could have been confounded by smoking exposure.

To summarize, this study contributes new information that the burden of CVD was 19-fold higher in Black people with SLE. CVD risk starts early during the second year after SLE diagnosis. Finally, we found discoid rash was a new potential predictor of future CVD events in SLE, which warrants further validation and mechanistic research. Future CVD prevention may focus on at-risk populations (young, Black, age  $\geq 65$  years) and disease characteristics such

## Racial Disparities in SLE

renal disease, discoid rash, with more aggressive screening and management of CVD risk factors to reduce disparities in lupus outcomes.

**ACKNOWLEDGMENTS**

We would like to thank Monica Messina for manuscript support.

**Funding:** The Georgians Organized Against Lupus (GOAL) Cohort was supported by 3U58DP001487-05W2 and U01DP05119 (Centers for Disease Control and Prevention).

CDC Disclaimer: The findings and conclusions in this report are those of the authors and do not necessarily represent the official position of the Centers for Disease Control and Prevention.

**REFERENCES:**

1. Lee YH, Choi SJ, Ji JD, Song GG. Overall and cause-specific mortality in systemic lupus erythematosus: an updated meta-analysis. *Lupus* 2016;25:727-34.
2. Lee J, Dillon N, Pope J. All-cause hospitalizations in systemic lupus erythematosus from a large Canadian referral centre. *Rheumatology (Oxford)* 2013;52:905-9.
3. Yen EY, Singh RR. Brief Report: Lupus-An Unrecognized Leading Cause of Death in Young Females: A Population-Based Study Using Nationwide Death Certificates, 2000-2015. *Arthritis Rheumatol* 2018;70:1251-5.
4. Urowitz MB, Bookman AA, Koehler BE, Gordon DA, Smythe HA, Ogryzlo MA. The bimodal mortality pattern of systemic lupus erythematosus. *Am J Med* 1976;60:221-5.
5. Manzi S, Meilahn EN, Rairie JE, et al. Age-specific incidence rates of myocardial infarction and angina in women with systemic lupus erythematosus: Comparison with the Framingham Study. *Am J Epidemiol* 1997;145:408-15.
6. Urowitz MB, Gladman DD, Anderson NM, et al. Cardiovascular events prior to or early after diagnosis of systemic lupus erythematosus in the systemic lupus international collaborating clinics cohort. *Lupus Sci Med* 2016;3:e000143.
7. Bartels CM, Buhr KA, Goldberg JW, et al. Mortality and cardiovascular burden of systemic lupus erythematosus in a US population-based cohort. *J Rheumatol* 2014;41:680-7.
8. Avina-Zubieta JA, To F, Vostretsova K, De Vera M, Sayre EC, Esdaile JM. Risk of Myocardial Infarction and Stroke in Newly Diagnosed Systemic Lupus Erythematosus: A General Population-Based Study. *Arthritis Care Res (Hoboken)* 2017;69:849-56.
9. Arkema EV, Svenungsson E, Von Euler M, Sjowall C, Simard JF. Stroke in systemic lupus erythematosus: a Swedish population-based cohort study. *Ann Rheum Dis* 2017;76:1544-9.
10. Somers EC, Marder W, Cagnoli P, et al. Population-based incidence and prevalence of systemic lupus erythematosus: the Michigan Lupus Epidemiology and Surveillance program. *Arthritis Rheumatol* 2014;66:369-78.



## Racial Disparities in SLE

11. Lim SS, Bayakly AR, Helmick CG, Gordon C, Easley KA, Drenkard C. The incidence and prevalence of systemic lupus erythematosus, 2002-2004: The Georgia Lupus Registry. *Arthritis Rheumatol* 2014;66:357-68.
12. Feldman CH, Hiraki LT, Liu J, et al. Epidemiology and sociodemographics of systemic lupus erythematosus and lupus nephritis among US adults with Medicaid coverage, 2000-2004. *Arthritis Rheum* 2013;65:753-63.
13. Lim SS, Helmick CG, Bao G, et al. Racial Disparities in Mortality Associated with Systemic Lupus Erythematosus - Fulton and DeKalb Counties, Georgia, 2002-2016. *MMWR Morb Mortal Wkly Rep* 2019;68:419-22.
14. Safford MM, Brown TM, Muntner PM, et al. Association of race and sex with risk of incident acute coronary heart disease events. *Jama* 2012;308:1768-74.
15. Kleindorfer D, Broderick J, Khoury J, et al. The unchanging incidence and case-fatality of stroke in the 1990s: a population-based study. *Stroke* 2006;37:2473-8.
16. Urowitz MB, Gladman D, Ibanez D, et al. Accumulation of coronary artery disease risk factors over three years: data from an international inception cohort. *Arthritis Rheum* 2008;59:176-80.
17. Urowitz MB, Ibanez D, Gladman DD. Atherosclerotic vascular events in a single large lupus cohort: prevalence and risk factors. *J Rheumatol* 2007;34:70-5.
18. Magder LS, Petri M. Incidence of and risk factors for adverse cardiovascular events among patients with systemic lupus erythematosus. *Am J Epidemiol* 2012;176:708-19.
19. The HIPAA Privacy Rule [Internet. Accessed 2019.] Available from: <https://www.hhs.gov/hipaa/for-professionals/privacy/index.html>external icon.
20. Tan EM, Cohen AS, Fries JF, et al. The 1982 revised criteria for the classification of systemic lupus erythematosus. *Arthritis Rheum* 1982;25:1271-7.
21. Hochberg MC. Updating the American College of Rheumatology revised criteria for the classification of systemic lupus erythematosus. *Arthritis Rheum* 1997;40:1725.
22. Quan H, Sundararajan V, Halfon P, et al. Coding algorithms for defining comorbidities in ICD-9-CM and ICD-10 administrative data. *Med Care* 2005;43:1130-9.
23. Kokotailo RA, Hill MD. Coding of stroke and stroke risk factors using international classification of diseases, revisions 9 and 10. *Stroke* 2005;36:1776-81.
24. Alpert JS, Thygesen K, Antman E, Bassand JP. Myocardial infarction redefined--a consensus document of The Joint European Society of Cardiology/American College of Cardiology Committee for the redefinition of myocardial infarction. *J Am Coll Cardiol* 2000;36:959-69.
25. Anderson JL, Adams CD, Antman EM, et al. ACC/AHA 2007 guidelines for the management of patients with unstable angina/non ST-elevation myocardial infarction: a report of the American College of Cardiology/American Heart Association Task Force on Practice Guidelines (Writing Committee to Revise the 2002 Guidelines for the Management of Patients With Unstable Angina/Non ST-Elevation Myocardial Infarction): developed in collaboration with the American College of Emergency Physicians, the Society for Cardiovascular Angiography and Interventions, and the Society of Thoracic Surgeons: endorsed by the American Association of Cardiovascular and Pulmonary Rehabilitation and the Society for Academic Emergency Medicine. *Circulation* 2007;116:e148-304.
26. Sacco RL, Kasner SE, Broderick JP, et al. An updated definition of stroke for the 21st century: a statement for healthcare professionals from the American Heart Association/American Stroke Association. *Stroke* 2013;44:2064-89.
27. Grenon SM, Vittinghoff E, Owens CD, Conte MS, Whooley M, Cohen BE. Peripheral artery disease and risk of cardiovascular events in patients with coronary artery disease: insights from the Heart and Soul Study. *Vasc Med* 2013;18:176-84.

## Racial Disparities in SLE

28. Hirsch AT, Haskal ZJ, Hertzler NR, et al. ACC/AHA 2005 Practice Guidelines for the management of patients with peripheral arterial disease (lower extremity, renal, mesenteric, and abdominal aortic): a collaborative report from the American Association for Vascular Surgery/Society for Vascular Surgery, Society for Cardiovascular Angiography and Interventions, Society for Vascular Medicine and Biology, Society of Interventional Radiology, and the ACC/AHA Task Force on Practice Guidelines (Writing Committee to Develop Guidelines for the Management of Patients With Peripheral Arterial Disease): endorsed by the American Association of Cardiovascular and Pulmonary Rehabilitation; National Heart, Lung, and Blood Institute; Society for Vascular Nursing; TransAtlantic Inter-Society Consensus; and Vascular Disease Foundation. *Circulation* 2006;113:e463-654.
29. Linden A. A matching framework to improve causal inference in interrupted time-series analysis. *J Eval Clin Pract* 2018;24:408-15.
30. Newey WK, West K. A simple, positive semi-definite, heteroskedasticity and autocorrelation consistent covariance matrix. *Econometrica* 1987;70:3-70.
31. Mozaffarian D, Benjamin EJ, Go AS, et al. Heart disease and stroke statistics--2015 update: a report from the American Heart Association. *Circulation* 2015;131:e29-322.
32. Farrington CP. Residuals for proportional hazards models with interval-censored survival data. *Biometrics* 2000;56:473-82.
33. VanderWeele TJ, Ding P. Sensitivity Analysis in Observational Research: Introducing the E-Value. *Annals of Internal Medicine* 2017;167:268-74.
34. Schoenfeld SR, Kasturi S, Costenbader KH. The epidemiology of atherosclerotic cardiovascular disease among patients with SLE: a systematic review. *Semin Arthritis Rheum* 2013;43:77-95.
35. Barbhaiya M, Feldman CH, Guan H, et al. Race/Ethnicity and Cardiovascular Events Among Patients With Systemic Lupus Erythematosus. *Arthritis & rheumatology (Hoboken, NJ)* 2017;69:1823-31.
36. Petri MA, Kiani AN, Post W, Christopher-Stine L, Magder LS. Lupus Atherosclerosis Prevention Study (LAPS). *Ann Rheum Dis* 2011;70:760-5.
37. Bruce IN. 'Not only...but also': Factors that contribute to accelerated atherosclerosis and premature coronary heart disease in systemic lupus erythematosus. *Rheumatology (Oxford)* 2005;44:1492-502.
38. Bruce IN. Atherogenesis and autoimmune disease: the model of lupus. *Lupus* 2005;14:687-90.
39. Urowitz M, Gladman D, Bruce I. Atherosclerosis and systemic lupus erythematosus. *Curr Rheumatol Rep* 2000;2:19-23.
40. Tazi Mezalek Z, Harmouche H, Ammouri W, Maamar M, Adnaoui M, Cacoub P. [Atherosclerosis in systemic lupus erythematosus]. *Presse Med* 2014;43:1034-47.
41. Pons-Estel GJ, González LA, Zhang J, et al. Predictors of cardiovascular damage in patients with systemic lupus erythematosus: data from LUMINA (LXVIII), a multiethnic US cohort. *Rheumatology (Oxford, England)* 2009;48:817-22.
42. Urowitz MB, Gladman DD, Farewell V, et al. Accrual of Atherosclerotic Vascular Events in a Multicenter Inception Systemic Lupus Erythematosus Cohort. *Arthritis Rheumatol* 2020;72:1734-40.
43. Tselios K, Sheane BJ, Gladman DD, Urowitz MB. Optimal Monitoring For Coronary Heart Disease Risk in Patients with Systemic Lupus Erythematosus: A Systematic Review. *J Rheumatol* 2016;43:54-65.
44. Colantonio LD, Gamboa CM, Richman JS, et al. Black-White Differences in Incident Fatal, Nonfatal, and Total Coronary Heart Disease. *Circulation* 2017;136:152-66.



## Racial Disparities in SLE

45. Drenkard C, Parker S, Aspey LD, et al. Racial Disparities in the Incidence of Primary Chronic Cutaneous Lupus Erythematosus in the Southeastern US: The Georgia Lupus Registry. *Arthritis Care Res (Hoboken)* 2019;71:95-103.
46. Skare TL, Stadler B, Weingraber E, De Paula DF. Prognosis of patients with systemic lupus erythematosus and discoid lesions\*. *An Bras Dermatol* 2013;88:755-8.
47. Singh AG, Crowson CS, Singh S, et al. Risk of Cerebrovascular Accidents and Ischemic Heart Disease in Cutaneous Lupus Erythematosus: A Population-Based Cohort Study. *Arthritis Care Res (Hoboken)* 2016;68:1664-70.
48. Hesselvig JH, Ahlehoff O, Dreyer L, Gislason G, Kofoed K. Cutaneous lupus erythematosus and systemic lupus erythematosus are associated with clinically significant cardiovascular risk: a Danish nationwide cohort study. *Lupus* 2017;26:48-53.
49. Gkrouzman E, Peng M, Davis-Porada J, Kirou KA. Venous Thromboembolic Events in African American Lupus Patients in Association With Antiphospholipid Antibodies Compared to White Patients. *Arthritis Care & Research* 2022;74:656-64.

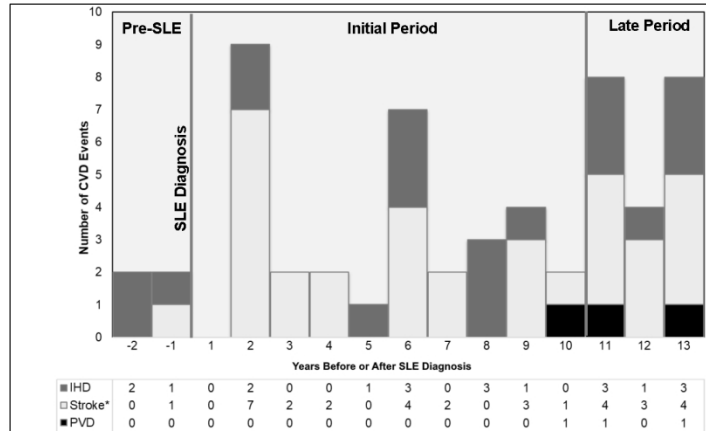
**FIGURE LEGENDS**

Figure 1. Incident cardiovascular disease (CVD) events among 336 people with lupus over 15 years (from 2 years before through 13 years after SLE diagnosis), by CVD subtype.

Legend: Bar heights reflect annual incident CVD. CVD subtypes are shown in color legend.

Figure 2. Incident CVD event-free survival by Kaplan-Meier stratified by racial group

Figure 1. Incident cardiovascular disease (CVD) events among 336 people with lupus over 15 years (from 2 years before through 13 years after SLE diagnosis), by CVD subtype.



Footnote: \*Stroke includes Cerebrovascular Accident and Transient Ischemic Attack. IHD=Ischemic Heart Disease; PVD=Peripheral Vascular Disease.

Figure Legend: Bar heights reflect annual incident CVD. CVD subtypes are shown in color legend.

Incident cardiovascular disease (CVD) events among 336 people with lupus over 15 years (from 2 years before through 13 years after SLE diagnosis), by CVD subtype.  
 Legend: Bar heights reflect annual incident CVD. CVD subtypes are shown in color legend.

215x279mm (192 x 192 DPI)

**Figure 2.** Incident CVD event-free survival by Kaplan-Meier stratified by racial groups

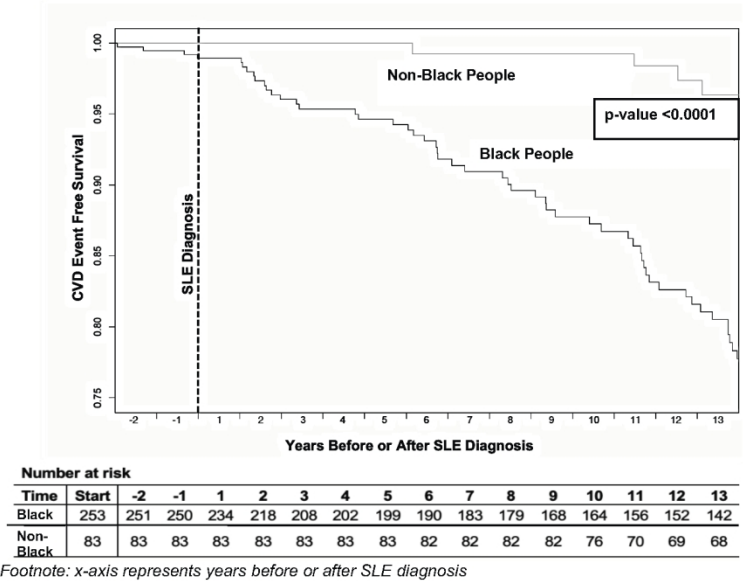


Figure 2. Incident CVD event-free survival by Kaplan-Meier stratified by racial group

215x279mm (197 x 197 DPI)

Table 1. Demographics and manifestations of 336 people with incident systemic lupus erythematosus from the Georgia Lupus Registry, 2002-2004

| Characteristic                                    | n (%)    |
|---|----------|
| <b>Demographics</b>                               |          |
| Racial groups                                     |          |
| White   | 72 (22)  |
| Black   | 253 (75) |
| Asian*  | 11 (3)   |
| Age at SLE diagnosis, mean years $\pm$ SD         |          |
| <19   | 28 (8)   |
| 19 to <35   | 104 (31) |
| 35 to <50   | 113 (34) |
| 50 to <65   | 63 (19)  |
| $\geq$ 65   | 28 (8)   |
| <b>Sex</b>  |          |
| Female  | 292 (87) |
| Male  | 44 (13)  |
| <b>ACR criteria within one year of diagnosis*</b> |          |
| Malar rash  | 64 (20)  |
| Discoid rash                                      | 48 (14)  |
| Photosensitivity                                  | 61 (19)  |
| Oral ulcers                                       | 75 (22)  |
| Arthritis   | 220 (66) |
| Serositis   | 118 (35) |

|                                   |          |
|-----------------------------------|----------|
| Renal disorder                    | 103 (31) |
| Neurologic disorder               | 31 (9)   |
| Hematologic disorder              | 282 (84) |
| Immunological disorder            | 231 (69) |
| Antinuclear antibody              | 321 (96) |
| <b>Other</b>                      |          |
| End stage renal disease (by 2015) | 36 (11)  |

*\*Includes one patient with unknown race.*

Table 2. Cox proportional hazards model predictors of incident cardiovascular disease events over the 12-year surveillance period (2 years before through 10 years after SLE diagnosis)

| Variables   | Unadjusted<br>Hazard Ratio<br>(95% CI) | p value     | Adjusted* Hazard<br>Ratio<br>(95% CI) | p<br>value   |
|---|--|-------------|---------------------------------------|--------------|
| <b>Demographic</b>  |  |             |                                       |              |
| Racial groups   |  |             |                                       |              |
| Non-Black   | ref                                    | ref         | ref                                   | ref          |
| Black   | <b>14.0 (2.0-102.0)</b>                | <b>0.01</b> | <b>19.0 (3.0-142.0)</b>               | <b>0.005</b> |
| Age at SLE Diagnosis (years)  |  |             |                                       |              |
| <19   | ref                                    | ref         | ref                                   | ref          |
| 19 to <35   | 0.4 (0.1-1.4)                          | 0.4         | 0.5 (0.1-1.7)                         | 0.3          |
| 35 to <50   | 1.0 (0.3-2.9)                          | 0.8         | 1.4 (0.5-4.5)                         | 0.5          |
| 50 to <65   | 0.9 (0.3-3.0)                          | 0.8         | 1.4 (0.4-5.0)                         | 0.6          |
| ≥65   | 1.5 (0.4-6.0)                          | 0.8         | <b>6.7 (1.6-29.0)</b>                 | <b>0.01</b>  |
| <b>Sex</b>  |  |             |                                       |              |
| Male  | ref                                    | ref         | ref                                   | ref          |
| Female  | 0.9 (0.4-2.4)                          | 0.9         | 1.1 (0.4-2.9)                         | 0.8          |
| <b>ACR criteria within one year of diagnosis or ESRD** (Yes vs. No)</b> |  |             |                                       |              |
| Malar Rash  | 0.5 (0.2-1.5)                          | 0.1         | -                                     | -            |
| Discoid Rash  | <b>2.3 (1.1-4.7)</b>                   | <b>0.03</b> | <b>3.5 (1.6-8.0)</b>                  | <b>0.002</b> |
| Photosensitivity  | 0.6 (0.2-1.6)                          | 0.3         | -                                     | -            |
| Oral Ulcers   | 1.2 (0.5-2.5)                          | 0.7         | -                                     | -            |
| Arthritis   | 0.8 (0.4-1.5)                          | 0.4         | -                                     | -            |
| Serositis   | 1.3 (0.7-2.6)                          | 0.5         | -                                     | -            |

|                                |                      |             |                      |             |
|--------------------------------|----------------------|-------------|----------------------|-------------|
| Renal Disorder or ESRD         | <b>2.2 (1.1-4.0)</b> | <b>0.02</b> | <b>2.6 (1.3-5.0)</b> | <b>0.01</b> |
| Neurologic Disorder            | 1.4 (0.5-4.0)        | 0.5         | -                    | -           |
| Hematologic Disorder           | 1.3 (0.5-2.6)        | 0.6         | -                    | -           |
| Immunological Disorder         | 1.6 (0.7-3.5)        | 0.3         | -                    | -           |
| Antinuclear Antibody           | 1.6 (0.2-12.0)       | 0.6         | -                    | -           |
| ACR Criteria Total (>4 vs. ≤4) | 1.2 (0.9-1.4)        | 0.2         | -                    | -           |

*\*Hazard Ratios adjusted for age, sex, racial groups, and ACR criteria within 1 year of SLE diagnosis with  $p < 0.1$  on univariable analysis. \*\*ACR Criteria results from a Multivariable Cox Proportional Hazards Model that included ESRD. Results reported for criterion with  $p < 0.1$  on univariable analysis. All ACR criteria were within 1 year of SLE diagnosis. ESRD was through years 2002-2015. All hazard ratios for variables with significant  $p$  values ( $< 0.05$ ) are shown in bold. Abbreviations: ESRD=end stage renal disease. Ref=reference. SLE=systemic lupus erythematosus. ACR=American College of Rheumatology.*

Table 3. Cox proportional hazards model predictors of incident cardiovascular disease events over the 15-year surveillance period (2 years before through 13 years after SLE diagnosis)

| <b>Variables</b>  | <b>Unadjusted<br/>Hazard Ratio<br/>(95% CI)</b> | <b>p value</b> | <b>Adjusted*<br/>Hazard Ratio<br/>(95% CI)</b> | <b>p<br/>value</b> |
|---|---|----------------|--|--------------------|
| <b>Demographic</b>  |   |                |  |                    |
| Racial groups   |   |                |  |                    |
| Non-Black   | ref   | ref            | ref  | ref                |
| Black   | <b>5.4 (2.0-15.0)</b>                           | <b>0.0011</b>  | <b>7.3 (2.4-22.0)</b>                          | <b>0.0004</b>      |
| Age at SLE Diagnosis (years)  |   |                |  |                    |
| <19   | ref   | ref            | ref  | -                  |
| 19 to <35   | 0.6 (0.2-1.7)                                   | 0.3            | 0.7 (0.2-1.8)                                  | 0.4                |
| 35 to <50   | 1.5 (0.6-3.7)                                   | 0.4            | 1.8 (0.7-5.1)                                  | 0.3                |
| 50 to <65   | 0.7 (0.2-2.3)                                   | 0.6            | 1.2 (0.4-3.8)                                  | 0.8                |
| ≥65   | 2.0 (0.6-6.7)                                   | 0.2            | <b>9.0 (2.4-33.0)</b>                          | <b>0.001</b>       |
| <b>Sex</b>  |   |                |  |                    |
| Male  | ref   | ref            | ref  | ref                |
| Female  | 1.1 (0.5-2.3)                                   | 0.9            | 1.4 (0.6-3.2)                                  | 0.4                |
| <b>ACR criteria within one year of diagnosis or ESRD** (Yes vs. No)</b> |   |                |  |                    |
| Malar Rash  | 1.0 (0.5-1.9)                                   | 0.9            | -  | -                  |
| Discoid Rash  | <b>2.1 (1.1-3.8)</b>                            | <b>0.02</b>    | <b>3.2 (1.4-7.1)</b>                           | <b>0.005</b>       |
| Photosensitivity  | 0.9 (0.5-1.8)                                   | 0.8            | -  | -                  |
| Oral Ulcers   | 1.1 (0.6-2.0)                                   | 0.8            | -  | -                  |
| Arthritis   | 1.1 (0.6-2.0)                                   | 0.7            | -  | -                  |



|                                   |                       |              |                      |             |
|-----------------------------------|-----------------------|--------------|----------------------|-------------|
| Serositis                         | <b>1.7 (1.01-2.9)</b> | <b>0.047</b> | 1.2 (0.6-2.4)        | 0.52        |
| Renal Disorder or<br>ESRD         | <b>1.9 (1.1-3.3)</b>  | <b>0.014</b> | <b>2.1 (1.1-4.1)</b> | <b>0.03</b> |
| Neurologic Disorder               | 1.2 (0.5-3.0)         | 0.7          | -                    | -           |
| Hematologic Disorder              | 1.3 (0.6-2.8)         | 0.46         | -                    | -           |
| Immunological Disorder            | <b>2.2 (1.1-4.3)</b>  | <b>0.03</b>  | 2.1 (0.9-4.5)        | 0.07        |
| Antinuclear Antibody              | 1.3 (0.3-5.1)         | 0.8          | -                    | -           |
| ACR Criteria Total (>4<br>vs. ≤4) | <b>1.3 (1.1-1.5)</b>  | <b>0.002</b> | 1.0 (0.8-1.3)        | 0.92        |

*\*Hazard Ratios adjusted for age, sex, racial groups, and ACR criteria within 1 year of SLE diagnosis with  $p < 0.1$  on univariable analysis. \*\*ACR Criteria results from a Multivariable Cox Proportional Hazards Model that included ESRD. Results reported for criterion with  $p < 0.1$  on univariable analysis. All ACR criteria were within 1 year of SLE diagnosis. ESRD was through years 2002-2015. All hazard ratios for variables with significant  $p$  values ( $< 0.05$ ) are shown in bold. Abbreviations: ESRD=end stage renal disease. Ref=reference. SLE=systemic lupus erythematosus. ACR=American College of Rheumatology.*

| Table 4. Cox model predictors of incident cardiovascular disease events in Black vs. non-Black people with SLE over 15 years |                                    |               |
|--|------------------------------------|---------------|
| Variables  | Adjusted* Hazard Ratio<br>(95% CI) | p value       |
| SLE Diagnosis Age <19 years  | Ref                                | -             |
| Age 19 - <35 years   | 0.6 (0.2-1.8)                      | 0.38          |
| Age 35 - <50 years   | 1.8 (0.7-5.1)                      | 0.25          |
| Age 50 - <65 years   | 1.2 (0.4-3.8)                      | 0.81          |
| <b>Age ≥65 years</b>   | <b>8.8 (2.4-32.1)</b>              | <b>0.0011</b> |
| Male   | Ref                                | -             |
| Female   | 1.4 (0.6-3.1)                      | 0.41          |
| <b>Discoid Rash (Yes)</b>  | <b>3.1(1.4-6.9)</b>                | <b>0.005</b>  |
| ACR Criteria Total (>4) vs. ≤4   | 0.98 (0.8-1.3)                     | 0.9           |
| Serositis (Yes)  | 1.0 (0.7-2.3)                      | 0.82          |
| <b>Renal Disorder or ESRD** (Yes)</b>  | <b>2.1 (1.1-4.0)</b>               | <b>0.03</b>   |
| Immunological Disorder (Yes)   | 2.1 (0.93-4.5)                     | 0.07          |

*\*Hazard Ratios adjusted for age, sex, and ACR criteria within 1 year of SLE diagnosis with p <0.1 on univariable analysis, and stratified by racial groups.*

*ACR Criteria with p<0.1 on univariable analysis included in Multivariable Cox Proportional Hazards Model Stratified by Racial groups. CI=Confidence Interval; ESRD=End Stage Renal Disease; Ref=Reference; SLE=systemic lupus erythematosus; ACR=American College of Rheumatology. \*\*All ACR criteria within the first year of SLE diagnosis. ESRD was through 2002-2015. All hazard ratios for variables with significant p values (<0.05) on multivariable analysis are shown in bold.*