

ONLINE SUPPLEMENTARY DATA.

Supplementary Table 1: Cancer Categories

Cancer Categories	ICD7	ICD10
Upper GI tract	140–152	C00.0 - C17.9
Lower GI tract	153–154	C18 - C21.8
Liver, Gallbladder, Pancreas, Peritoneum	155–158	C22-C26, C48.2
Respiratory	160–164	C30-C39
Breast	170	C50-C58
Female Reproductive system	171–175	C51-C58
Prostate	177	C61
Male Reproductive system	178–179	C60, C62-C63
Kidneys and renal pelvis	180	C64-C65
Urinary tract without kidneys	181	C66-C68
Skin	190–191	C43-C44
Eyes	192	C69
Central and Peripheral Nervous System	193	C70-72
Endocrine system	194–195	C73-C75
Sarcomas	196–197	C40-41, C45- 49
Unspecified	199	C76-C80
Lymphomas	200–202	C81-C88
Multiple Myeloma	203	C90-C90.2
Leukemia exclusive myelofibrosis	204–208	C91-C95
Myelofibrosis	209	C94.4

Supplementary Table 2: Cancer sites and delay between cancer cases in 25 patients with cancer both before and after the GCA diagnosis

Sex	Cancer Cases Before	Cancer Cases After	Cancer-site Before GCA and year	Cancer-Site After GCA and year	Reoccurrence Delay in years
M	1	2	Skin 1992	Prostate 2010 and Skin 2010	18
F	1	1	Lower GIT 1995	Skin 2010	15
M	1	1	Male reproductive system 1971	Prostate 2010	39
F	1	1	Female reproductive system 1968	Urinary tract 2000	32
F	1	1	Skin 1997	Skin 2011	14
F	1	1	Female reproductive system 1978	Breast 2011	33
F	2	1	Skin 1978 and 1993	Skin 2012	19
F	1	1	Female reproductive and Lower GIT 1991	Lower GIT 2000	9
F	1	1	Female reproductive system 1967	Lower GIT 2009	42
M	3	1	Myelofibrosis 2000(x2) and Lower GIT 2005	Skin 2010	5
M	1	2	Leukemia 1994	Skin 2004 and Lymphoma 2007	10
M	1	1	Lower GIT 1998	Leukemia 2005	7
F	1	1	Lower GIT 1998	Respiratory 2008	10
F	1	1	Lower GIT 1964	Breast 2008	44
F	1	1	Breast 1992	Skin 2010	18
M	2	1	Lower and Upper GIT 1995	Lower GIT 2011	16
F	1	1	Female reproductive system 1967	Breast 2007	40
M	1	1	Prostate 1999	Kidneys 2005	6
M	1	1	Prostate 1992	Skin 2009	17
F	1	1	Female reproductive system 1968	Lower GIT 2010	42
F	1	1	Female reproductive system 1999	Leukemia 2010	11
F	1	1	Lower GIT 2000	Skin 2007	7
M	1	2	Prostate 2003	Lower GIT 2005 and Skin 2012	2
F	1	1	Female reproductive system 1975	Breast 2001	26
F	1	1	Kidneys 1982	Skin 1999	17

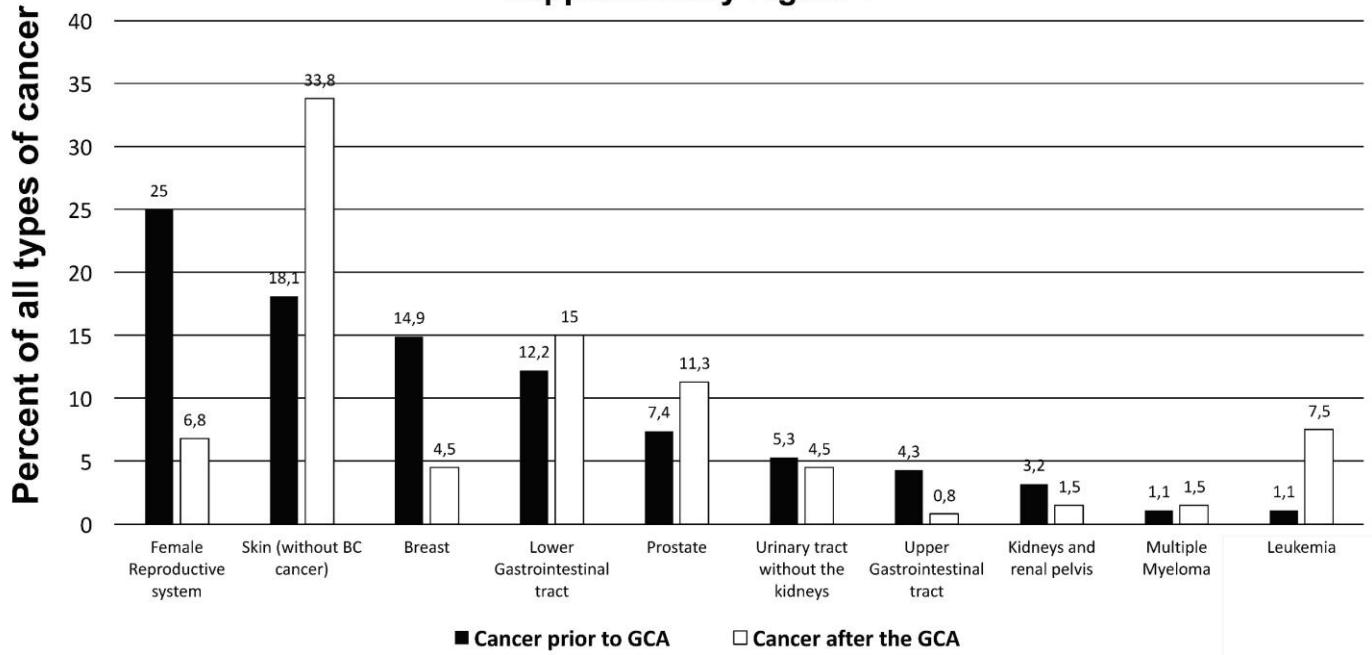
GIT: Gastrointestinal tract

The mean delay from the last cancer occurred before the GCA diagnosis to the first cancer occurred after the GCA diagnosis was 19,96 years with a standard deviation 13,30 years. The median was 17 years with IQR 10-34 years.

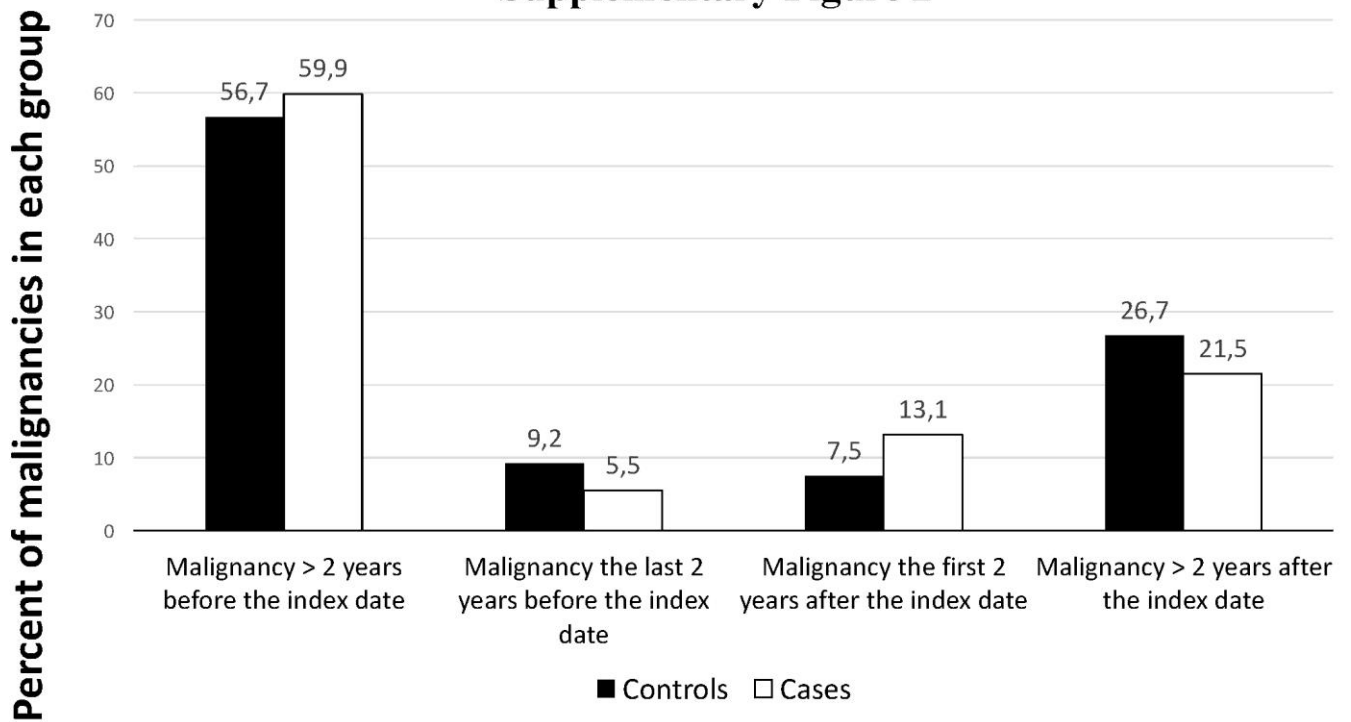
Supplementary Table 3: Malignancies prior to GCA diagnosis in descending order

Cancer Categories	Frequency	Percent
Female Reproductive system	47	25
Skin (without BC cancer)	34	18,1
Breast	28	14,9
Lower Gastrointestinal tract	23	12,2
Prostate	14	7,4
Urinary tract without the kidneys	10	5,3
Upper Gastrointestinal tract	8	4,3
Kidneys and renal pelvis	6	3,2
Endocrine system	6	3,2
CNS	3	1,6
Respiratory system	2	1,1
Male Reproductive system	2	1,1
Multiple Myeloma	2	1,1
Leukemia	2	1,1
Myelofibrosis	1	0,5
Total	188	100

Supplementary Figure 1



Supplementary Figure 2



Time periods when malignancy occurred in relation to index date