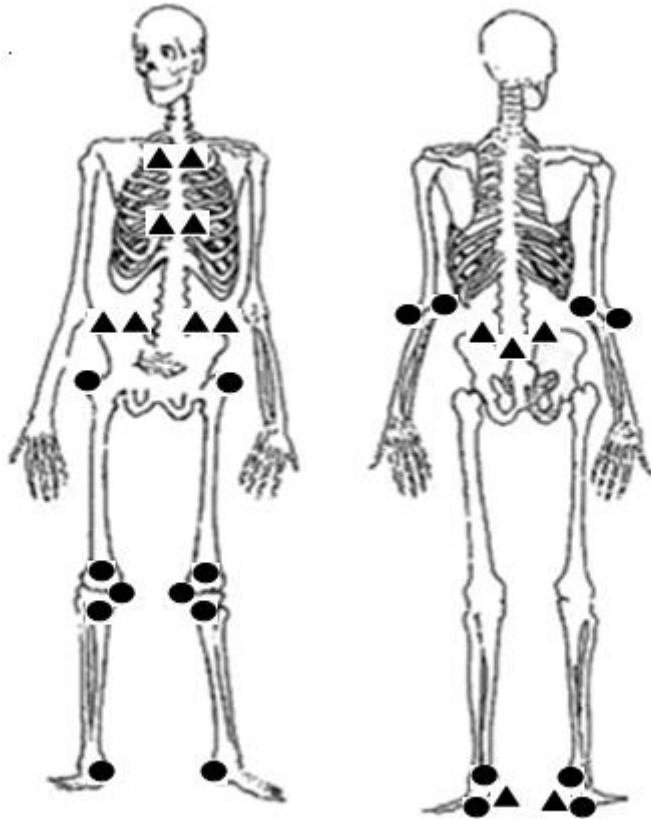


Supplementary Figure 1. Enteseal sites evaluated with MASES and PDUS examination.



▲ 13 entheses examined with MASES

● 9 bilateral entheses examined with PDUS

Supplementary Table 1. Differences in patient characteristics between patients with and without structural and inflammatory lesions.

	Structural lesions			Inflammatory lesions		
	Yes n=74	No n=37	p-value	Yes n=88	No n=23	p
Gender (male) (n, %)	56 (76)	23 (62)	0.138	65 (74)	14 (61)	0.221
Age (yrs)	44.4 \pm 11.4	39.8 \pm 9.0	0.036*	43.4 \pm 11.3	40.9 \pm 9.1	0.338
Duration of symptoms (yrs)	16.5 (2-49)	2 (2-35)	0.052	21 (2-47)	15 (2-49)	0.674
Time since diagnosis (yrs)	9 (0-37)	3.5 (0-24)	0.033*	11 (0-37)	6.5 (0-35)	0.288
HLA-B27+ (n, %)	61 (82)	29 (78)	0.607	71 (81)	19 (83)	0.834
mSASSS score (range 0-72)	12.9 (1.1-72)	6.9 (0-72)	0.007*	9.8 (0-72)	11 (3-72)	0.699
MASES (range 0-13)	2 (0-12)	3 (0-10)	0.068	2 (0-12)	3 (0-9)	0.226
BASDAI (range 0-10)	5.8 (1-9)	6.1 (3-9)	0.668	6 (3-9)	5.8 (1-9)	0.925
ASDAS _{crp}	3.9 (2-6)	3.7 (2-5)	0.150	3.8 (2-6)	3.8 (2-5)	0.477
CRP (mg/L)	16 (2-99)	11 (2-55)	0.022*	15 (2-99)	15 (2-41)	0.802
ESR (mm/hr)	21.5 (2-90)	23 (2-80)	0.898	21 (2-90)	26 (6-61)	0.936
BASFI (range 0-10)	6.3 (2-10)	5.4 (1-9)	0.176	6.1 (1-10)	6.5 (4-10)	0.838
ASQOL (range 0-18)	10 (1-18)	10 (1-17)	0.985	10 (1-18)	11 (1-17)	0.761

Online supplement to Ultrasound Evaluation of the Entheses in Daily Clinical Practice during Tumor Necrosis Factor- α Blocking Therapy in Patients with Ankylosing Spondylitis, the *Journal of Rheumatology*, doi:10.3899/jrheum.160584

(Supplementary Table 1 cont.) Values are mean \pm SD or median (range) unless otherwise indicated. * $p < 0.05$. AS, Ankylosing Spondylitis; HLA-B27+, human leukocyte antigen B27 positive; IBD, inflammatory bowel disease; MASES, Maastricht Ankylosing Spondylitis Enthesitis Score; BASDAI, Bath Ankylosing Spondylitis Disease Activity Index; ASDAS, Ankylosing Spondylitis Disease Activity Score; CRP, C-reactive protein; ESR, erythrocyte sedimentation rate; BASFI, Bath Ankylosing Spondylitis Functional Index; ASQOL, Ankylosing Spondylitis Quality of Life.