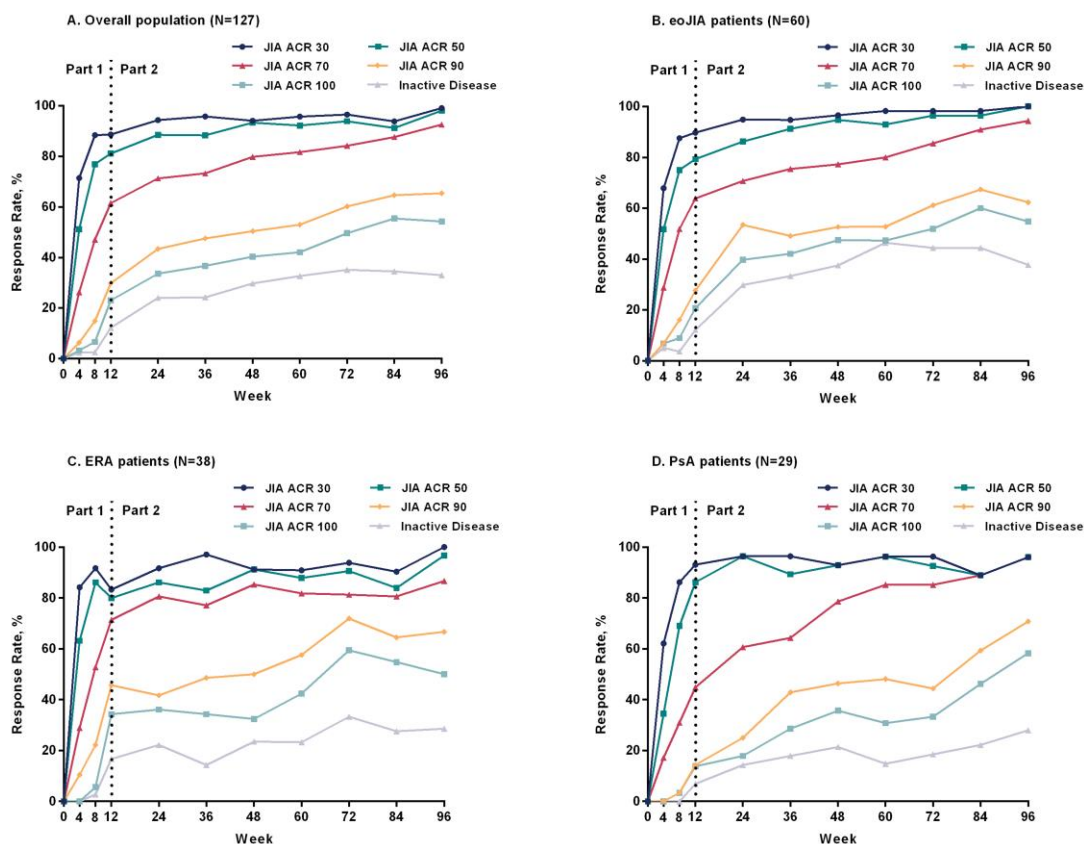


Supplementary Figure 1. JIA ACR response rates and inactive disease status (OC data; mITT) over time. JIA: juvenile idiopathic arthritis; ACR: American College of Rheumatology; OC: observed cases; mITT: modified intention to treat.



Supplementary Figure 2. JIA ACR response rates (LOCF data; mITT) over time. JIA: juvenile idiopathic arthritis; ACR: American College of Rheumatology; LOCF: last observation carried forward; mITT: modified intention to treat.

