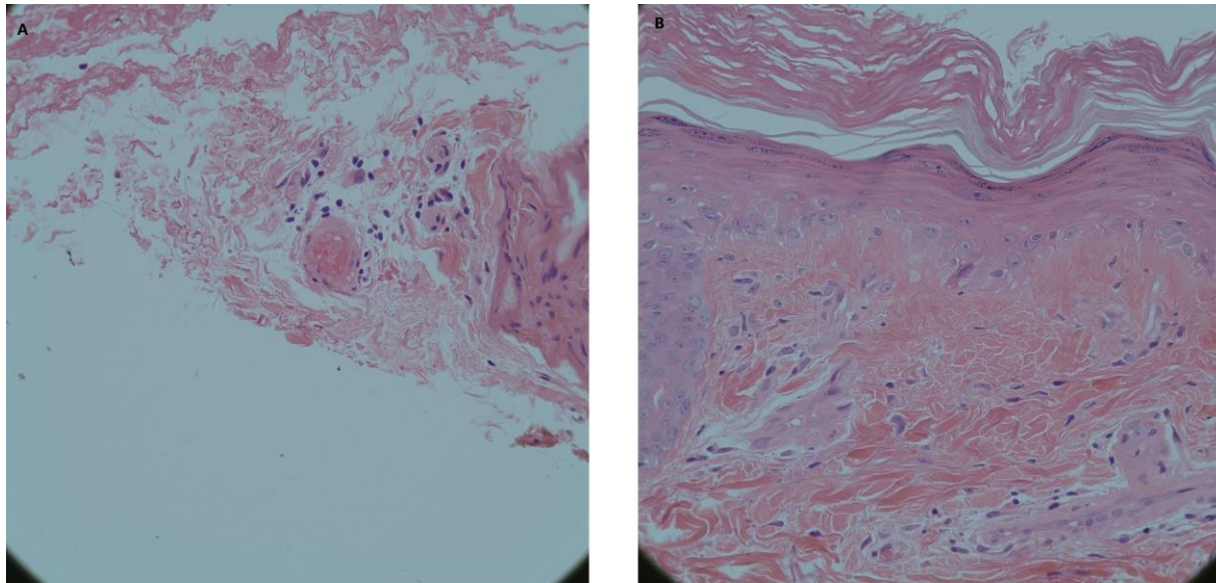
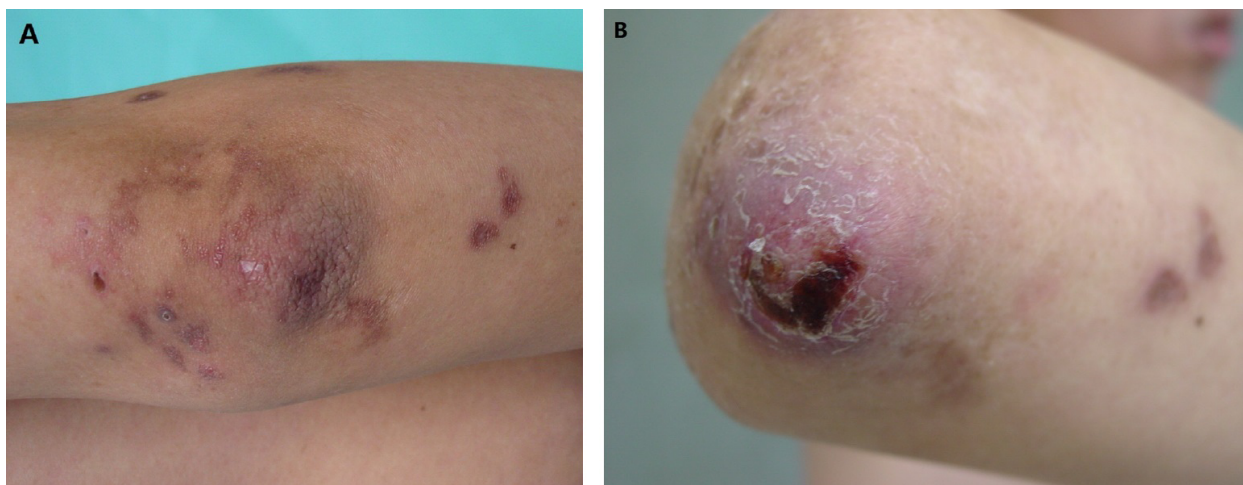


Supplementary Figure 1.



The interface change in nonulcerated areas was adjacent to the vasculopathy.

Supplementary Figure 2.



A. CADM patient with Gottron papules involving the elbow joint. B. Three weeks later, the Gottron sign has deep ulceration, even with necrotic crust. CADM: clinically amyopathic dermatomyositis.