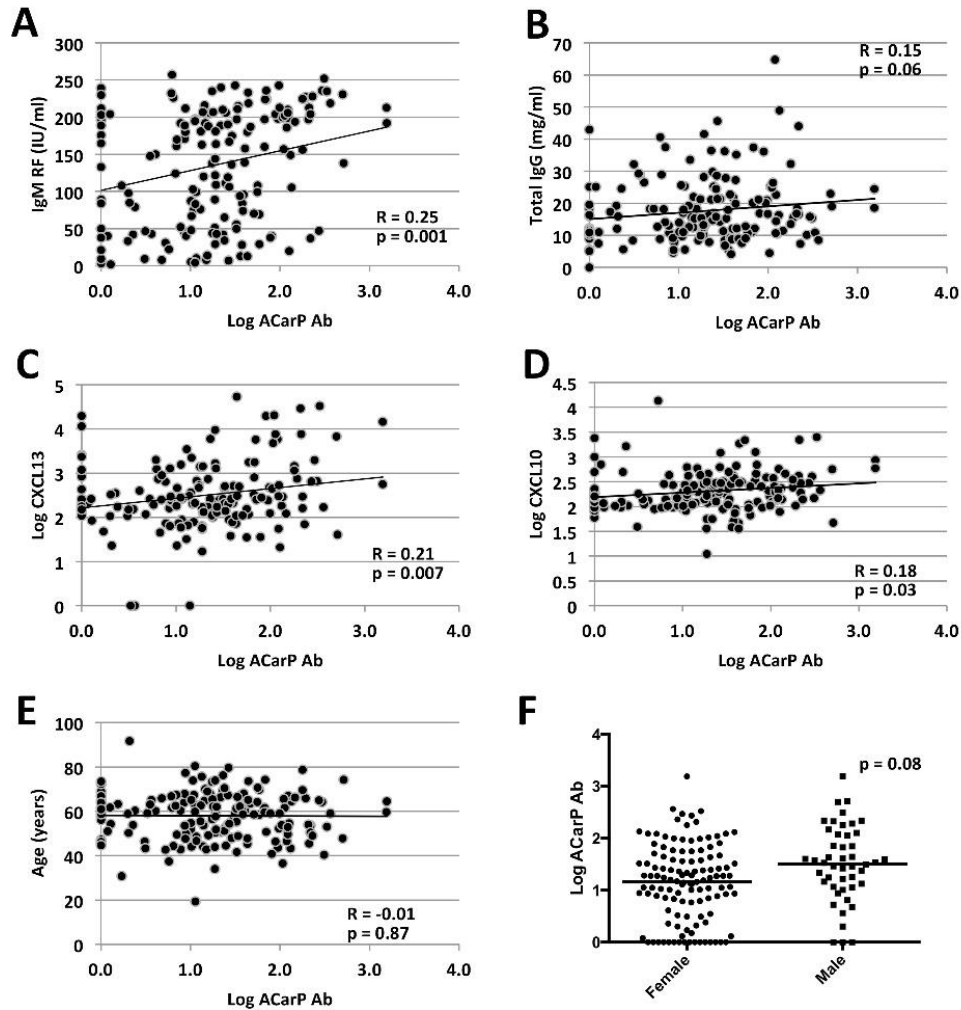


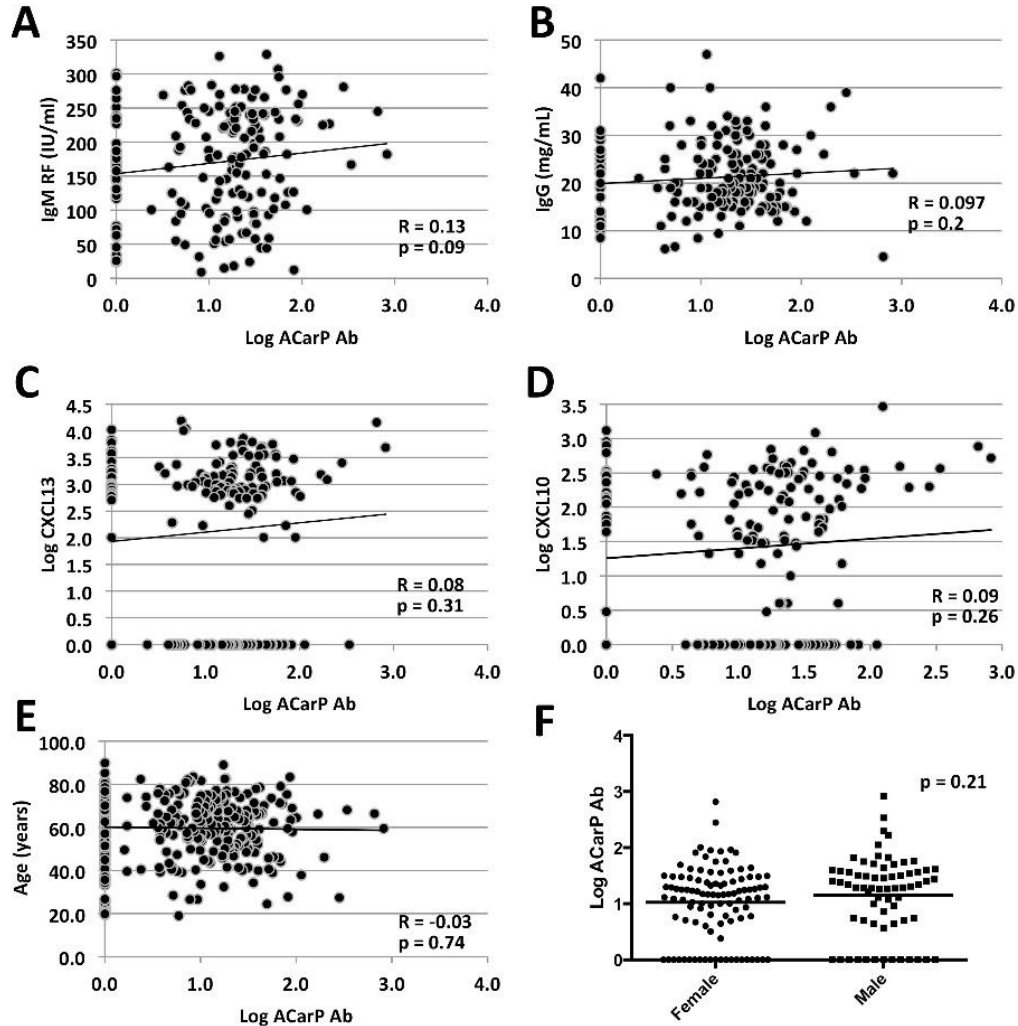
ONLINE SUPPLEMENTARY DATA

Supplementary Figure 1. Among seropositive patients with RA in the Dartmouth cohort, anti-CarP reactivity shows a relationship with (A) IgM-RF, (C) CXCL13, and (D) CXCL10, but not with (B) total IgG, (E) age, or (F) sex.



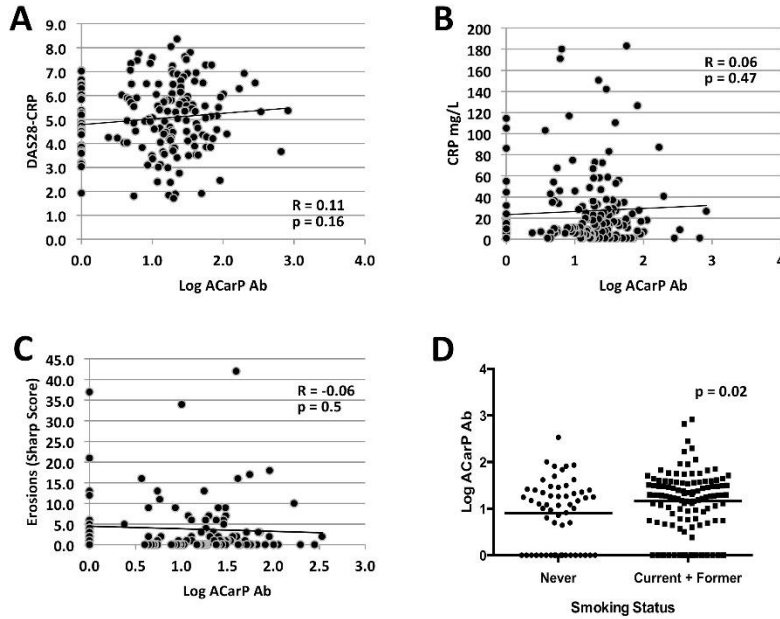
Anti-CarP: anti-carbamylated protein; IgM: immunoglobulin M; RF: rheumatoid factor; CXCL13: C-X-C motif chemokine 13; CXCL10: C-X-C motif chemokine 10; IgG: immunoglobulin G.

Supplementary Figure 2. Among seropositive patients with RA in the Sherbrooke cohort, a relationship to anti-CarP reactivity was not identified with (A) IgM-RF, (B) total IgG, (C) CXCL13, (D) CXCL10, (E) age, or (F) sex.



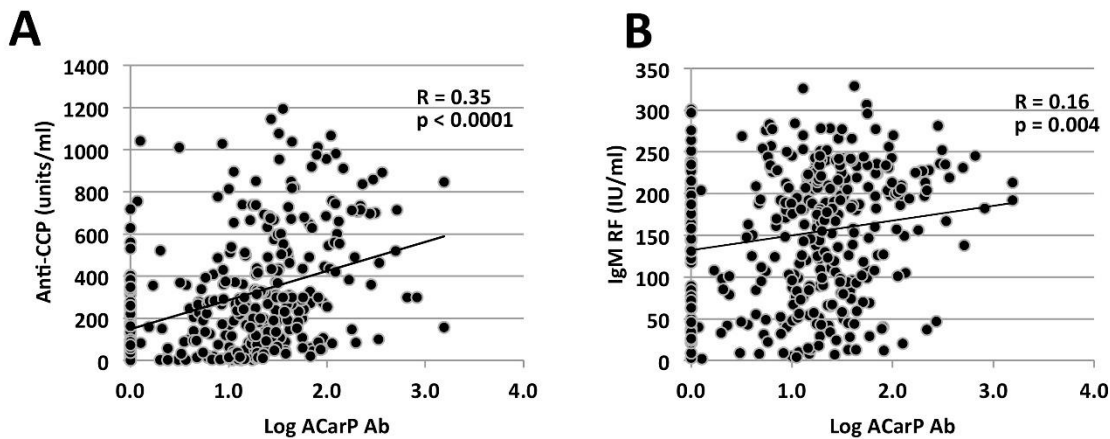
Anti-CarP: anti-carbamylated protein; IgM: immunoglobulin M; RF: rheumatoid factor; IgG: immunoglobulin G; CXCL13: C-X-C motif chemokine 13; CXCL10: C-X-C motif chemokine 10.

Supplementary Figure 3. Among seropositive patients with RA in the Sherbrooke cohort, there was no relationship identified between anti-CarP reactivity and (A) DAS28-CRP, (B) CRP, or (C) baseline erosions. (D) Anti-CarP reactivity is more prevalent in current and former smokers than nonsmokers.



DAS28: Disease Activity Score in 28 joints; CRP: C-reactive protein; anti-CarP: anti-carbamylated protein.

Supplementary Figure 4. Combining the Dartmouth and Sherbrooke cohorts shows a preserved relationship between anti-CarP reactivity and (A) anti-CCP titers and (B) IgM-RF levels.



Anti-CarP: anti-carbamylated protein; anti-CCP: anticyclic citrullinated peptide antibodies; IgM: immunoglobulin M; RF: rheumatoid factor.