

Application of the 2016 EULAR/ACR/PRINTO Classification Criteria for Macrophage Activation Syndrome in Patients with Adult-onset Still Disease

Sung Soo Ahn, Byung-Woo Yoo, Seung Min Jung, Sang-Won Lee, Yong-Beom Park, and Jason Jungsik Song

ABSTRACT. Objective. To evaluate the clinical significance of the 2016 European League Against Rheumatism (EULAR)/American College of Rheumatology (ACR)/Pediatric Rheumatology International Trials Organization (PRINTO) classification criteria for macrophage activation syndrome (MAS) in patients with adult-onset Still disease (AOSD).

Methods. We performed a retrospective analysis of patients with AOSD with fever who were admitted to Severance Hospital between 2005 and 2016. The patients with AOSD were evaluated for MAS using the 2016 classification criteria for MAS. Clinical features, laboratory findings, and overall survival were analyzed. Logistic regression analysis was used to evaluate the factors associated with in-hospital mortality.

Results. Among 64 patients with AOSD, 36 (56.3%) were classified as having MAS. The overall survival rate was significantly lower in patients with MAS than in those without (67% vs 100%, $p < 0.001$). Multivariate analysis showed that a low erythrocyte sedimentation rate, a low albumin level, an increase in ferritin of over 2 folds, and the development of MAS on admission were significantly associated with mortality in patients with AOSD.

Conclusion. The 2016 EULAR/ACR/PRINTO classification criteria for MAS are potentially useful for the identification of patients with AOSD at high risk for a poor outcome. Febrile patients with AOSD should be monitored with the 2016 classification criteria for MAS in the early diagnosis and proper treatment of MAS. (J Rheumatol First Release April 15 2017; doi:10.3899/jrheum.161286)

Key Indexing Terms:

MACROPHAGE ACTIVATION SYNDROME
SYSTEMIC JUVENILE IDIOPATHIC ARTHRITIS

ADULT-ONSET STILL DISEASE
FERRITIN

Adult-onset Still disease (AOSD) is a rare systemic inflammatory disease with the characteristic features of quotidian fever, arthritis, evanescent rash, and leukocytosis. Other

From the Division of Rheumatology, Department of Internal Medicine, and the Severance Institute for Vascular and Metabolic Research, Yonsei University College of Medicine, Seoul, South Korea.

Supported by the Basic Science Research Program (2015R1C1A1A01053140) through the National Research Foundation of Korea, funded by the Ministry of Education, Science, and Technology.

S.S. Ahn, MD, Division of Rheumatology, Department of Internal Medicine, Yonsei University College of Medicine; B.W. Yoo, MD, Division of Rheumatology, Department of Internal Medicine, Yonsei University College of Medicine; S.M. Jung, MD, PhD, Division of Rheumatology, Department of Internal Medicine, Yonsei University College of Medicine; S.W. Lee, MD, PhD, Division of Rheumatology, Department of Internal Medicine, Yonsei University College of Medicine; Y.B. Park, MD, PhD, Division of Rheumatology, Department of Internal Medicine, Yonsei University College of Medicine; J.J. Song, MD, PhD, Division of Rheumatology, Department of Internal Medicine, and the Severance Institute for Vascular and Metabolic Research, Yonsei University College of Medicine.

Address correspondence to Dr. J.J. Song, Division of Rheumatology, Department of Internal Medicine, Yonsei University College of Medicine, 50-1 Yonsei-ro, Seodaemun-gu, Seoul 03722, South Korea.

E-mail: JSKSONG@yuhs.ac

Accepted for publication February 17, 2017.

common clinical features include sore throat, lymphadenopathy, hepatosplenomegaly, and abnormal liver function test results. Nonsteroidal antiinflammatory drugs (NSAID) are the initial drugs of choice in mild cases¹, while steroids are the first-line treatments in patients with systemic manifestations². In steroid-refractory cases, potent immunosuppressive treatment is required^{3,4}. Although the overall prognosis of the disease is known to be favorable, the natural course of the disease is often dismal, especially in steroid-refractory cases. However, it is difficult to predict the outcome owing to the wide range of responses to steroid treatment.

Macrophage activation syndrome (MAS) involves acute systemic inflammation arising in the context of various autoimmune and autoinflammatory conditions, and is seen most commonly in cases of systemic juvenile idiopathic arthritis (sJIA)⁵. It is potentially life-threatening, and it requires early diagnosis and aggressive treatment. Although MAS has not been reported to be common in patients with AOSD, it is known to be a fatal complication of AOSD^{6,7,8}. The early diagnosis of MAS is considered difficult because there are no pathognomonic findings or disease-specific laboratory markers. Although hemophagocytic histiocytes are

frequently seen in the bone marrow or liver of patients with MAS, their occurrence in these organs is not specific to MAS and may not be apparent in the early stage of MAS⁹. Recently, the European League Against Rheumatism (EULAR)/American College of Rheumatology (ACR)/Pediatric Rheumatology International Trials Organization (PRINTO) Collaborative Initiative group developed new criteria for the classification of MAS in patients with sJIA^{10,11}. Validation of the 2016 classification criteria for MAS showed that MAS was identifiable in cases of sJIA, with a sensitivity of 0.73 and a specificity of 0.99. AOSD is considered an adult counterpart of sJIA because both these conditions share clinical features, including high fever, rash, joint pain, and lymphadenopathy. Therefore, we evaluated the clinical significance of the 2016 EULAR/ACR/PRINTO classification criteria for MAS in patients with AOSD.

MATERIALS AND METHODS

Patient selection. We retrospectively reviewed the electronic medical records of patients admitted to Severance Hospital and collected the clinical and laboratory data of patients who were hospitalized owing to fever and AOSD between December 1, 2005, and May 31, 2016. Patients with documented fever, defined as a body temperature of over 37.8°C during the admission period¹², were included. Patients with fever that was not considered attributable to the activity of AOSD and those who did not undergo testing for the serum ferritin level were excluded. Finally, 64 patients were analyzed, and all patients fulfilled the Yamaguchi criteria for AOSD¹³. As part of the diagnostic procedure, cancer and infectious diseases were evaluated during hospitalization with microbial cultures (blood, urine, and sputum), echocardiography, imaging tests of chest and abdomen (radiograph, ultrasound, and/or computed tomography), and tests for human immunodeficiency virus and tuberculosis. This study was approved by the Institutional Review Board (IRB) of Severance Hospital and was performed in accordance with the principles set forth in the Declaration of Helsinki (IRB protocol number 4-2016-0280).

Definition of MAS and classification of patients. The 2016 EULAR/ACR/PRINTO classification criteria for MAS are based on clinical data of patients with sJIA, and they are highly specific for detecting the development of MAS in sJIA. Although these criteria have not been validated in patients with AOSD, we applied the criteria to our patients with AOSD because AOSD is considered an adult counterpart of sJIA. In our study, patients were classified as having MAS if they had fever and a ferritin level ≥ 684 ng/ml, and fulfilled more than 2 of the following 4 criteria: platelet count $\leq 181,000/\mu\text{l}$, aspartate aminotransferase (AST) level > 48 units/l, triglyceride level > 156 mg/dl, and fibrinogen level ≤ 360 mg/dl. Patients with MAS were further divided into the following 2 groups: those who already had MAS at admission and those who developed MAS after admission.

Clinical and laboratory data collection and definition of ferritin fold increase. Clinical data were collected: age, sex, body temperature, and presence of arthritis, rash, leukocytosis, sore throat, lymphadenopathy, and hepatosplenomegaly. Glucocorticoid dosage per day was calculated by dividing the total steroid dosage used during hospitalization by the number of days of steroid use, and was expressed in prednisolone-equivalent dosage. Baseline laboratory data were white blood cell (WBC) and platelet counts, erythrocyte sedimentation rate (ESR), and levels of hemoglobin, C-reactive protein (CRP), blood urea nitrogen, creatinine, AST, alanine aminotransferase (ALT), total bilirubin, total protein, albumin, ferritin, lactate dehydrogenase (LDH), fibrinogen, and triglycerides. Because the fibrinogen and triglyceride levels were not measured regularly, both the levels were included for analysis when the results were obtained within 3 days of the date of laboratory data selection. Ferritin fold increase was calculated by dividing

the maximum level of ferritin during admission by the baseline ferritin level.

Evaluation of the hemophagocytic syndrome score (HScore) in patients with AOSD with and without MAS. The HScore was developed to estimate an individual's risk of having reactive hemophagocytic syndrome¹⁴. We further evaluated the HScore in our study population and compared the probability of having hemophagocytic syndrome between patients classified as having MAS and not having MAS according to the 2016 EULAR/ACR/PRINTO classification criteria. As previously described, the HScore and probability of having hemophagocytic syndrome were calculated by using the calculator available online (saintantoine.aphp.fr/score). In addition, the in-hospital mortality rates between patients with the probability of having hemophagocytic syndrome $\geq 80\%$ and $< 80\%$, without MAS, were also calculated.

Statistical analysis. For normally distributed data, continuous variables are presented as means with SD, while non-normally distributed data are presented as medians with interquartile ranges (IQR). Categorical variables are expressed as frequencies and percentages. For continuous variables, comparisons of different groups were performed using the Student t test or the Mann-Whitney U test as appropriate, and for categorical variables, comparisons were performed using the chi-square test or Fisher's exact test. The probability of survival in patients with MAS and those without was calculated using the Kaplan-Meier method and the log-rank test. Risk factors for in-hospital mortality in patients with AOSD were determined by performing univariate and multivariate analyses with a forward stepwise logistic regression. The multivariate forward stepwise logistic regression included only factors that were statistically significant in the univariate analysis model. OR and 95% CI were calculated, and a 2-tailed p value < 0.05 was considered statistically significant. All statistical analyses were performed using the Statistical Package for the Social Sciences software version 21 (SPSS Inc.) and the MedCalc statistical software version 16.2.0 (MedCalc Software bvba).

RESULTS

Baseline characteristics of the AOSD patients with and without MAS. There were 71 patients with AOSD who were hospitalized because of fever during the study period. Among those patients, 3 were excluded because their fever was due to infection, and an additional 4 patients were excluded because ferritin level was not measured on admission. Among the remaining 64 patients with AOSD, 36 (56.3%) were found to be classified as having MAS during the admission period (Table 1). Of these 36 patients, 22 (61.1%) had MAS at admission and 14 (38.9%) developed MAS after admission. On comparing the baseline characteristics between patients with and without MAS, we noted that the proportion of female patients was higher in patients with MAS than in those without MAS. Regarding laboratory variables, the platelet count, ESR, total protein level, and fibrinogen level were lower, and the AST, ALT, LDH, ferritin, and triglyceride levels were higher in patients with MAS than in those without. No differences in sex were noted between patients with MAS at admission and those who developed MAS after admission. However, the platelet count and ESR were lower and the LDH and triglyceride levels were higher in patients with MAS at admission than in those who developed MAS after admission. There was no difference between groups in clinical manifestations (Supplementary Table 1, available with the online version of this article). Among 64 patients, 26 had undergone a bone marrow study; 18 belonged to the MAS during admission group, and 8

Table 1. Baseline characteristics of the patients with AOSD. Values are median (interquartile range) unless otherwise specified.

Variables	AOSD, n = 64		AOSD with MAS, n = 36	
	Without MAS, n = 28	With MAS, n = 36	On admission, n = 22	After admission, n = 14
Age, yrs	43.0 (27.5–54.0)	47.5 (36.0–57.5)	47.5 (30.0–55.0)	48.0 (38.0–65.0)
Female, n (%)	19 (67.8)	34 (94.4)**	21 (95.4)	13 (92.8)
WBC count, / μ l	13,125 (9025–17,585)	10,630 (6915–16,130)	9520 (5640–15,500)	14,515 (8310–18,890)
Hemoglobin, g/dl, mean (SD)	11.3 (1.9)	10.9 (1.4)	11.1 (1.6)	10.7 (0.9)
Platelet count, \times 1000/ μ l	338.5 (238.0–439.0)	203.5 (140.0–292.0)***	164.0 (98.0–213.0)	264.0 (213.0–305.0)**
ESR, mm/h, mean (SD)	83.7 (29.9)	60.1 (33.9)**	49.0 (28.6)	77.7 (35.0)*
CRP, mg/l	101.1 (64.0–167.4)	96.4 (50.2–143.8)	91.4 (28.9–133.3)	110.1 (52.4–203.5)
BUN, mg/dl	10.2 (7.9–14.1)	11.5 (9.3–14.8)	11.5 (9.8–15.1)	11.3 (9.0–14.6)
Cr, mg/dl	0.6 (0.5–0.8)	0.7 (0.5–0.9)	0.6 (0.5–0.8)	0.8 (0.6–0.9)
Total protein, mg/dl	6.8 (6.4–7.3)	6.2 (5.8–6.6)**	6.2 (5.7–6.5)	6.3 (5.8–6.6)
Albumin, mg/dl, mean (SD)	3.3 (0.5)	3.1 (0.5)	3.1 (0.5)	3.1 (0.4)
AST, IU/l, mean (SD)	37.4 (27.6)	196.6 (320.0)*	269.8 (385.5)	81.5 (111.0)
ALT, IU/l, mean (SD)	38.5 (32.1)	157.8 (248.5)*	173.3 (223.8)	133.5 (290.4)
Total bilirubin, mg/dl, mean (SD)	0.6 (0.9)	0.8 (1.0)	0.6 (1.2)	0.4 (0.2)
LDH, IU/l, mean (SD)	416.7 (233.4)	875.0 (603.9)***	1073.4 (674.6)	563.2 (274.3)*
Ferritin, ng/ml	1394.9 (809.5–2153.9)	6773.4 (2567.1–14,610.2)***	10,767.4 (2853.3–15,000)	5527.4 (2348.0–7441.3)
Fibrinogen, mg/dl, mean (SD) [§]	639.4 (143.0)	329.4 (178.7)***	285.1 (141.9)	435.8 (229.0)
Triglyceride, mg/dl [†]	104.0 (96.2–156.0)	168.0 (126.7–223.5)*	201.0 (162.0–283.5)	105.0 (98.5–141.0)*

* $p < 0.05$. ** $p < 0.01$. *** $p < 0.001$ for differences between 2 groups. [§] Total no. patients who underwent each test ($n = 24$). [†] Total no. patients who underwent each test ($n = 26$). AOSD: adult-onset Still disease; MAS: macrophage activation syndrome; WBC: white blood cell; ESR: erythrocyte sedimentation rate; CRP: C-reactive protein; BUN: blood urea nitrogen; Cr: creatinine; AST: aspartate aminotransferase; ALT: alanine aminotransferase; LDH: lactate dehydrogenase.

belonged to the group without MAS. Among 18 patients with MAS, hemophagocytosis was observed in 9 patients, whereas none of the patients without MAS had hemophagocytosis in a bone marrow study.

Comparison of overall survival according to MAS and ferritin. We analyzed the prognosis of patients according to the presence of MAS and ferritin fold increase (Figure 1). Among the 64 patients included in our study, in-hospital

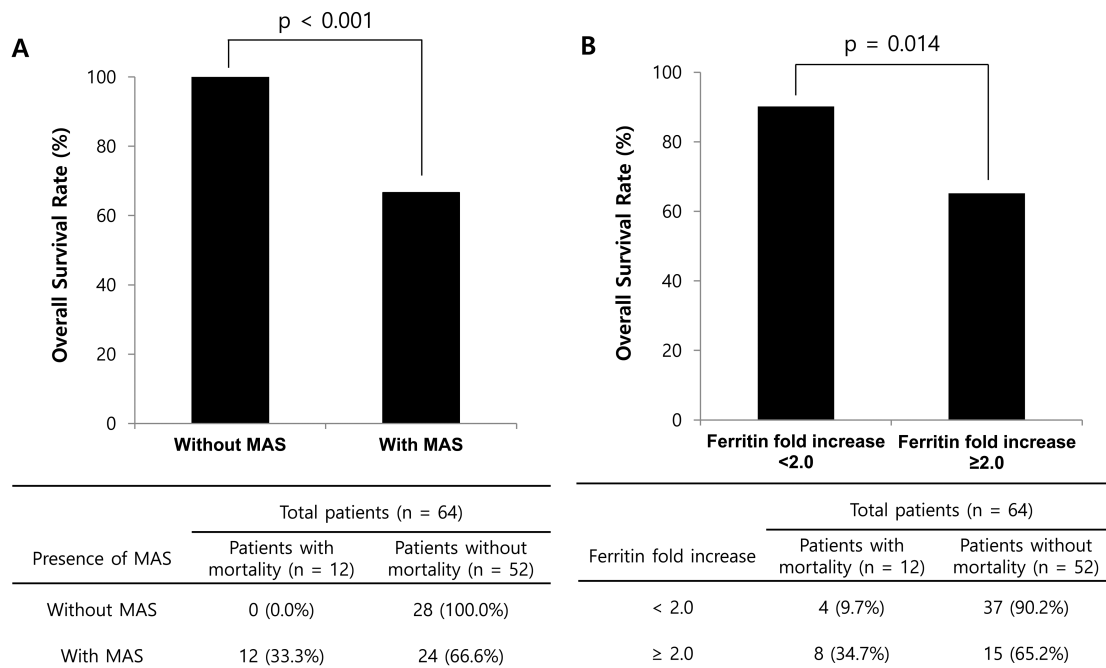


Figure 1. Comparison of the overall survival rate in patients with AOSD. (A) Survival rate comparison between patients with and those without MAS. (B) Survival rate comparison according to changes in the ferritin level. Ferritin fold increase was calculated by dividing the maximum level of ferritin during admission by the ferritin level at admission. AOSD: adult-onset Still disease; MAS: macrophage activation syndrome.

mortality was noted in 12 patients. In-hospital mortality was not noted in patients without MAS. Overall survival was significantly lower in patients with MAS than in those without MAS (66.6% vs 100.0%, $p < 0.001$; Figure 1A). Additionally, overall survival was lower in patients with ferritin fold increase ≥ 2.0 than in those with ferritin fold increase < 2.0 (65.2% vs 90.2%, $p = 0.014$; Figure 1B).

Evaluation of the HScore in AOSD patients with and without MAS. The absolute HScore and probability of having hemophagocytic syndrome was compared between patients who were classified as having and not having MAS according to the 2016 EULAR/ACR/PRINTO classification criteria. A comparison of the HScore between both groups showed that patients with MAS had a higher HScore and probability of having hemophagocytic syndrome than those without MAS ($p < 0.001$; Figure 2A and Figure 2B). Further, patients with MAS with the probability of having hemophagocytic syndrome $\geq 80\%$ had a higher in-hospital mortality rate than those with MAS with a probability of having hemophagocytic syndrome $< 80\%$ and patients without MAS during the admission period (Figure 2C).

Comparison of the use of glucocorticoids and other immunosuppressive agents in patients with AOSD. A comparison of the use of glucocorticoids and immunosuppressive agents in patients with and without MAS showed that patients with MAS were treated more aggressively, including a higher glucocorticoid dosage and more frequent cyclosporine, etoposide, and intravenous (IV) immunoglobulin use, than those without MAS (Supplementary Table 2, available with the online version of this article). In addition, to evaluate the effect of treatment on patients' outcome, the medication usage was compared between patients with MAS with in-hospital mortality and those without in-hospital mortality. Compared to patients without in-hospital mortality, the

treatment option used in patients with in-hospital mortality differed only regarding IV immunoglobulin usage (Supplementary Table 2, available with the online version of this article).

Risk factors for in-hospital mortality in patients with AOSD. To analyze the risk factors for in-hospital mortality in patients with AOSD during admission, we performed logistic regression analysis with a forward stepwise method. In univariate logistic regression analysis, these variables were associated with in-hospital mortality: ESR (OR 0.972, $p = 0.009$), total protein level (OR 0.184, $p = 0.005$), albumin level (OR 0.202, $p = 0.018$), LDH level (OR 1.001, $p = 0.022$), ferritin level (OR 1.000, $p = 0.020$), ferritin fold increase of ≥ 2 (OR 4.933, $p = 0.019$), and MAS at admission (OR 9.000, $p = 0.003$). Multivariate logistic regression analysis showed that these were significant risk factors for in-hospital mortality in patients with AOSD (Table 2): ferritin fold increase of ≥ 2 (OR 18.276, 95% CI 1.749–190.966, $p = 0.015$), MAS at admission (OR 10.321, 95% CI 1.094–97.308, $p = 0.041$), ESR (OR 0.965, 95% CI 0.934–0.997, $p = 0.033$), and albumin level (OR 0.138, 95% CI 0.019–0.976, $p = 0.047$).

Kaplan-Meier survival analysis of patients with AOSD according to MAS development. There were 9 deaths among patients with MAS at admission and 3 deaths among patients who developed MAS after admission. Kaplan-Meier analysis with the log-rank test showed that the in-hospital mortality rate was higher in patients with MAS at admission and patients who developed MAS after admission than in those without MAS (MAS at admission vs without MAS, $p < 0.001$; MAS after admission vs without MAS, $p = 0.013$; Figure 3). However, there was no difference in the in-hospital mortality rate between patients with MAS at admission and those who developed MAS after admission ($p = 0.208$). Of

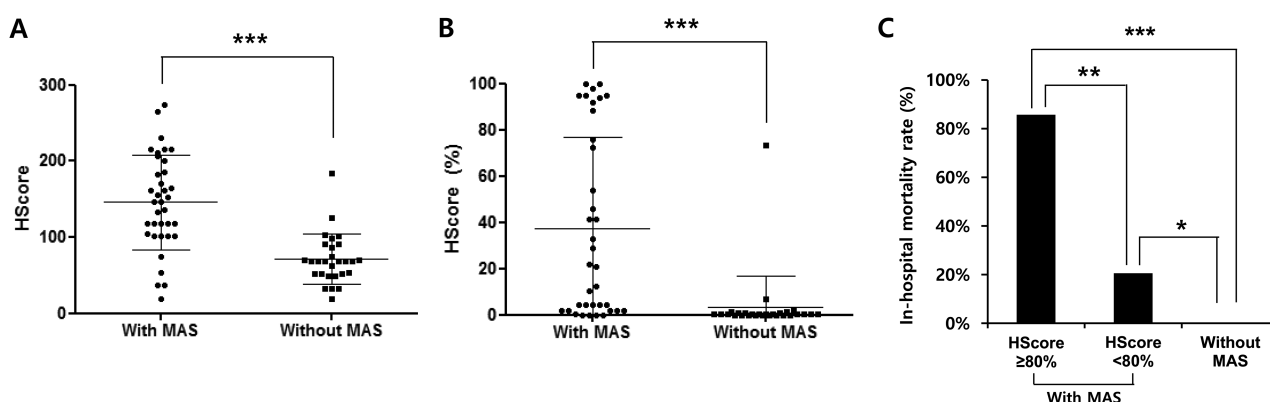


Figure 2. Evaluation of the HScore and probability of having hemophagocytic syndrome in AOSD patients with MAS. The HScore was compared between patients with and without MAS. In-hospital mortality between patients with the probability of having hemophagocytic syndrome $\geq 80\%$ and $< 80\%$, without MAS, was also compared. (A) Comparison of the absolute HScore between the groups. (B) Comparison of the probability of having hemophagocytic syndrome between the groups. (C) Comparison of the in-hospital mortality rate in patients with probability of having hemophagocytic syndrome $\geq 80\%$ and $< 80\%$, without MAS. Data are expressed as the means and 95% CI. * $p < 0.05$. ** $p < 0.01$. *** $p < 0.001$. HScore: hemophagocytic syndrome score; AOSD: adult-onset Still disease; MAS: macrophage activation syndrome.

Table 2. Univariate and multivariate logistic regression analyses of in-hospital mortality among patients with adult-onset Still disease.

Variables	Univariate Analysis			Multivariate Analysis		
	OR	95% CI	p	OR	95% CI	p
Age	1.028	0.981–1.076	0.238			
Female	2.619	0.302–22.714	0.382			
WBC count, / μ l	1.000	0.999–1.000	0.922			
Hemoglobin, g/dl	0.764	0.492–1.186	0.231			
Platelet count, $\times 1000/\mu$ l	0.994	0.989–1.000	0.068			
ESR, mm/h	0.972	0.951–0.993	0.009	0.965	0.934–0.997	0.033
CRP, mg/l	0.995	0.986–1.004	0.319			
BUN, mg/dl	1.090	0.988–1.202	0.083			
Cr, mg/dl	0.254	0.015–4.244	0.340			
Total protein, mg/dl	0.184	0.055–0.612	0.005			
Albumin, mg/dl	0.202	0.053–0.767	0.018	0.138	0.019–0.976	0.047
AST, IU/l	1.001	0.999–1.003	0.129			
ALT, IU/l	1.000	0.997–1.003	0.822			
Total bilirubin, mg/dl	1.780	0.999–3.166	0.050			
LDH, IU/l	1.001	1.000–1.002	0.022			
Ferritin, ng/ml	1.000	1.000–1.000	0.020			
Ferritin fold increase ≥ 2.0	4.933	1.289–18.875	0.019	18.276	1.749–190.966	0.015
MAS on admission	9.000	2.111–38.353	0.003	10.321	1.094–97.308	0.041

WBC: white blood cell; ESR: erythrocyte sedimentation rate; CRP: C-reactive protein; BUN: blood urea nitrogen; Cr: creatinine; AST: aspartate aminotransferase; ALT: alanine aminotransferase; LDH: lactate dehydrogenase; MAS: macrophage activation syndrome.

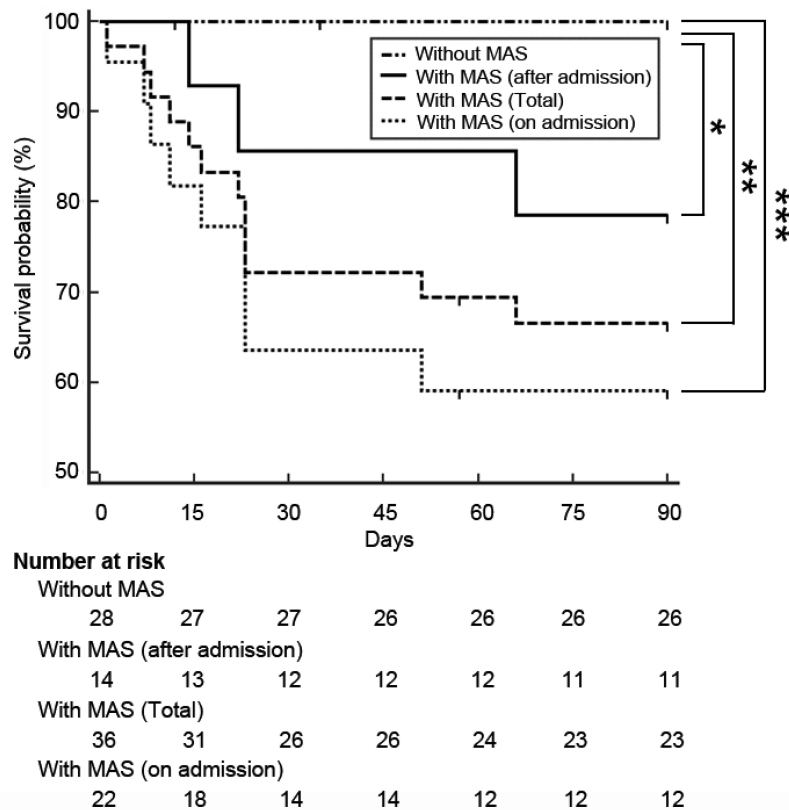


Figure 3. Results of the Kaplan-Meier analysis of the cumulative survival rate in patients with adult-onset Still disease with and without MAS. * $p < 0.05$. ** $p < 0.01$. *** $p < 0.001$. MAS: macrophage activation syndrome.

the 12 cases of in-hospital mortality, 8 (66.6%) resulted from multisystem organ failure and 4 (33.3%) from secondary infections during admission. The median number of days from the diagnosis to death was 17.0 (IQR 9.0–34.0).

DISCUSSION

MAS refers to acute overwhelming inflammation caused by a “cytokine storm,” and a clinician’s suspicion is critical for early detection and proper management⁹. Several autoimmune diseases, such as sJIA, Kawasaki disease, systemic lupus erythematosus (SLE), and AOSD, have been reported to be associated with the development of MAS¹⁵. However, even with a clinical suspicion, the diagnosis of MAS is difficult because it might be hard to distinguish the clinical features of MAS from those of conditions that may have overlapping manifestations, such as flares of underlying rheumatic diseases and systemic infection⁵. Multiple cytokines, such as interleukin (IL)-18, IL-10, and interferon- γ , have been found to be associated with MAS; however, clinical validation for the diagnosis of MAS has not been performed⁵. To date, several classification criteria for MAS have been suggested, which include the hemophagocytic lymphohistiocytosis (HLH)-1991 and HLH-2004 criteria, and the 2014 criteria for reactive hemophagocytosis^{14,16,17}. Application of the HLH-1991 and HLH-2004 in patients included in our study showed that only 1 patient fulfilled the HLH-1991 criteria and 7 patients fulfilled the HLH-2004 criteria. The low percentage of patients fulfilling both criteria occurred because the bone marrow study was not performed or failed to demonstrate hemophagocytosis, and several laboratory tests (natural killer cell activity and soluble CD25) were not performed in most patients. In contrast, application of the 2014 criteria showed that AOSD patients with MAS had a higher HScore and probability of having hemophagocytic syndrome than those without MAS. In addition, patients with the probability of having hemophagocytic syndrome $\geq 80\%$ had a higher in-hospital mortality than those with the probability of having hemophagocytic syndrome $< 80\%$ and without MAS. Although these criteria are not diagnostic but rather the classification type, our study suggests that the 2016 classification criteria can be used as a reliable and simple measure for recognizing MAS in patients with AOSD, which is associated with an increased risk of early mortality.

In our study, we investigated the clinical significance of the 2016 EULAR/ACR/PRINTO classification criteria for MAS in patients with AOSD, and we demonstrated that 56% of patients with AOSD who were hospitalized for fever were considered to have MAS. Our study population was in the inpatient setting, and therefore could be skewed toward having MAS. In comparison, we found only 1 patient who fulfilled the 2016 classification criteria among 35 patients with AOSD in our outpatient clinic during the study period. In addition, the clinical features of AOSD patients with MAS

were distinct when compared with the features of patients without MAS. First, the baseline clinical features were much worse in patients with MAS than in those without MAS. Second, the required therapeutic dosage of steroids and immunosuppressive agents used was higher in patients with MAS than in those without MAS. Third, the in-hospital mortality rate was higher in patients with MAS than in those without MAS. These findings support the clinical use of the 2016 classification criteria for MAS in patients with AOSD, and patients at high risk for a poor prognosis can be identified. In the survival analysis, most patients with MAS died within the first month, and in-hospital mortality was noted only in patients with MAS. Detection of MAS is important for early immunosuppressive treatment, while patients with AOSD without MAS can be treated with NSAID or low-dose steroids.

The 2016 EULAR/ACR/PRINTO classification criteria for MAS include fever and 5 common laboratory variables (ferritin, AST, platelets, triglycerides, and fibrinogen). These laboratory results can be obtained as part of routine laboratory tests, and the tests can be easily repeated for followup. However, unlike pediatric patients, in whom hyperferritinemia is useful in the diagnosis of MAS¹⁸, various diseases are reported to be associated with hyperferritinemia in adults¹⁹. Therefore, the absolute value of the ferritin level itself is not sufficient for diagnosing MAS. Further, although the new classification criteria set was validated in patients with sJIA, these criteria may not be comprehensively applicable to other autoinflammatory/autoimmune diseases in adults. The reason for this is that the clinical manifestation of MAS can differ according to the underlying rheumatic disease. A study has shown that MAS arising in the context of SLE and AOSD differs in several clinical and laboratory features. In detail, patients with MAS associated with AOSD had higher WBC, CRP, ferritin, and ALT levels compared with patients with MAS associated with SLE²⁰. Therefore, the development of uniform MAS classification criteria for autoinflammatory/autoimmune diseases might be challenging.

Ferritin is an intracellular protein related to iron storage, and is usually used for the differential diagnosis of anemia²¹. Although the ferritin level serves as a marker of iron storage, it can also be elevated in the case of acute inflammation. A wide range of medical conditions is characterized by high levels of ferritin, such as systemic inflammatory disease, infection, and cancer²². Among those conditions of hyperferritinemia, a differential diagnosis of AOSD, MAS, catastrophic antiphospholipid syndrome (CAPS), and septic shock²³ has special interest because of nonspecific systemic manifestations and high mortality. Diagnosing CAPS is often difficult in clinical practice because other forms of thrombotic microangiopathies must be excluded, and the presence of antiphospholipid antibodies and vascular thrombosis must be confirmed²⁴. Similarly, although the diagnosis of sepsis is made with a suspected or confirmed source of infection, there

is difficulty in diagnosing sepsis because only a fraction of cases of sepsis can be microbiologically documented²⁵. Though several serum markers including soluble IL-2 receptor- α receptors and soluble CD163 have been recognized as important biomarkers in the diagnosis of MAS^{26,27}, the diagnosis of MAS is clinically challenging, especially in patients with AOSD.

A high ferritin level has been shown to be associated with AOSD^{28,29}. Various studies have evaluated the prognostic value of the ferritin level in AOSD; however, the results have been inconsistent^{6,7,30,31}, probably because of the paucity of the disease and the diversity of patients in the studies. In addition, a recent study suggested that the change in laboratory values over time is more relevant than the achievement of the absolute threshold for MAS³². In line with this suggestion, our data showed that ferritin fold increase of ≥ 2 is significantly associated with in-hospital mortality in patients with AOSD. The dynamics of the ferritin level during the course of AOSD may be useful to predict patients at high risk for a poor outcome.

Because of the poor prognosis of HLH, various studies have endeavored to discover its prognostic factors. In a publication by Kaito, *et al*, these were associated with mortality: age over 30 years, the presence of disseminated intravascular coagulation, an increased ferritin and $\beta 2$ -microglobulin, anemia accompanied by thrombocytopenia, and jaundice³³. In addition, in a study by Takahashi, *et al*, the presence of lymphoma was associated with a poor prognosis in patients with hemophagocytic syndrome³⁴, and Arca, *et al* linked a poor prognosis to increasing age, decreasing platelet count, underlying lymphoma, and no etoposide in disease management³⁵. Further, a recent study by Ruscitti, *et al*, which evaluated the prognostic factor in MAS, old age and increased ferritin levels were associated with mortality³⁶. However, because of wide heterogeneity of the patient inclusion criteria and difference in study design, the prognostic factor of patients with AOSD with MAS requires further investigation.

Our study has several limitations. First, it was a retrospective study with a relatively small number of patients, and the data were collected by reviewing the hospital's medical records. Second, data on fibrinogen and triglycerides were missing in some patients, and this might have influenced the classification of MAS. Third, the 2016 classification criteria for MAS have not been validated in patients with AOSD, especially for differentiation with systemic infection. Fourth, the effect of treatment in the outcome of patients could not be evaluated, probably because of the small sample size and retrospective study design. Prospective studies with a larger number of patients, serial testing of laboratory variables, and a proper control group are necessary.

The 2016 EULAR/ACR/PRINTO classification criteria for MAS are potentially useful to identify patients with AOSD at high risk for a poor outcome. Although the 2016

classification criteria for MAS have been validated in patients with sJIA, febrile patients with AOSD should be monitored with the 2016 classification criteria for MAS for the early diagnosis and proper treatment of MAS.

ONLINE SUPPLEMENT

Supplementary material accompanies the online version of this article.

REFERENCES

1. Gerfaud-Valentin M, Jamilloux Y, Iwaz J, Sève P. Adult-onset Still's disease. *Autoimmun Rev* 2014;13:708-22.
2. Fautrel B. Adult-onset Still disease. *Best Pract Res Clin Rheumatol* 2008;22:773-92.
3. Fujii T, Akizuki M, Kameda H, Matsumura M, Hirakata M, Yoshida T, et al. Methotrexate treatment in patients with adult onset Still's disease—retrospective study of 13 Japanese cases. *Ann Rheum Dis* 1997;56:144-8.
4. Marchesoni A, Ceravolo GP, Battafarano N, Rossetti A, Tosi S, Fantini F. Cyclosporin A in the treatment of adult onset Still's disease. *J Rheumatol* 1997;24:1582-7.
5. Ravelli A, Davi S, Minoia F, Martini A, Cron RQ. Macrophage activation syndrome. *Hematol Oncol Clin North Am* 2015; 29:927-41.
6. Kong XD, Xu D, Zhang W, Zhao Y, Zeng X, Zhang F. Clinical features and prognosis in adult-onset Still's disease: a study of 104 cases. *Clin Rheumatol* 2010;29:1015-9.
7. Bae CB, Jung JY, Kim HA, Suh CH. Reactive hemophagocytic syndrome in adult-onset Still disease: clinical features, predictive factors, and prognosis in 21 patients. *Medicine* 2015;94:e451.
8. Lenert A, Yao Q. Macrophage activation syndrome complicating adult onset Still's disease: a single center case series and comparison with literature. *Semin Arthritis Rheum* 2016;45:711-6.
9. Grom AA, Horne A, De Benedetti F. Macrophage activation syndrome in the era of biologic therapy. *Nat Rev Rheumatol* 2016;12:259-68.
10. Ravelli A, Minoia F, Davi S, Horne A, Bovis F, Pistorio A, et al; Paediatric Rheumatology International Trials Organisation; Childhood Arthritis and Rheumatology Research Alliance; Pediatric Rheumatology Collaborative Study Group; Histiocyte Society. 2016 Classification Criteria for Macrophage Activation Syndrome Complicating Systemic Juvenile Idiopathic Arthritis: A European League Against Rheumatism/American College of Rheumatology/Paediatric Rheumatology International Trials Organisation Collaborative Initiative. *Ann Rheum Dis* 2016; 75:481-9.
11. Ravelli A, Minoia F, Davi S, Horne A, Bovis F, Pistorio A, et al; Paediatric Rheumatology International Trials Organisation, Childhood Arthritis and Rheumatology Research Alliance, Pediatric Rheumatology Collaborative Study Group, and the Histiocyte Society. 2016 Classification Criteria for Macrophage Activation Syndrome Complicating Systemic Juvenile Idiopathic Arthritis: A European League Against Rheumatism/American College of Rheumatology/Paediatric Rheumatology International Trials Organisation Collaborative Initiative. *Arthritis Rheumatol* 2016;68:566-76.
12. Kasper D, Fauci A, Hauser S, Longo D, Jameson J, Loscalzo J. Harrison's principles of internal medicine, 19th ed. (Vol. 1 and Vol. 2). New York: McGraw-Hill Education; 2015.
13. Yamaguchi M, Ohta A, Tsunematsu T, Kasukawa R, Mizushima Y, Kashiwagi H, et al. Preliminary criteria for classification of adult Still's disease. *J Rheumatol* 1992;19:424-30.
14. Fardet L, Galicier L, Lambotte O, Marzac C, Aumont C, Chahwan D, et al. Development and validation of the HScore, a score for the

- diagnosis of reactive hemophagocytic syndrome. *Arthritis Rheumatol* 2014;66:2613-20.
15. Atteritano M, David A, Bagnato G, Beninati C, Frisina A, Iaria C, et al. Haemophagocytic syndrome in rheumatic patients. A systematic review. *Eur Rev Med Pharmacol Sci* 2012;16:1414-24.
 16. Henter JI, Horne A, Arico M, Egeler RM, Filipovich AH, Imashuku S, et al. HLH-2004: Diagnostic and therapeutic guidelines for hemophagocytic lymphohistiocytosis. *Pediatr Blood Cancer* 2007;48:124-31.
 17. Henter JI, Elinder G, Ost A. Diagnostic guidelines for hemophagocytic lymphohistiocytosis. The FHL Study Group of the Histiocyte Society. *Semin Oncol* 1991;18:29-33.
 18. Lehmborg K, McClain KL, Janka GE, Allen CE. Determination of an appropriate cut-off value for ferritin in the diagnosis of hemophagocytic lymphohistiocytosis. *Pediatr Blood Cancer* 2014;61:2101-3.
 19. Schram AM, Campigotto F, Mullally A, Fogerty A, Massarotti E, Neuberger D, et al. Marked hyperferritinemia does not predict for HLH in the adult population. *Blood* 2015;125:1548-52.
 20. Kumakura S, Murakawa Y. Clinical characteristics and treatment outcomes of autoimmune-associated hemophagocytic syndrome in adults. *Arthritis Rheumatol* 2014;66:2297-307.
 21. Thomas DW, Hinchliffe RF, Briggs C, Macdougall IC, Littlewood T, Cavill I; British Committee for Standards in Haematology. Guideline for the laboratory diagnosis of functional iron deficiency. *Br J Haematol* 2013;161:639-48.
 22. Moore C Jr, Ormseth M, Fuchs H. Causes and significance of markedly elevated serum ferritin levels in an academic medical center. *J Clin Rheumatol* 2013;19:324-8.
 23. Rosário C, Zandman-Goddard G, Meyron-Holtz EG, D'Cruz DP, Shoenfeld Y. The hyperferritinemic syndrome: macrophage activation syndrome, Still's disease, septic shock and catastrophic antiphospholipid syndrome. *BMC Med* 2013;11:185.
 24. Aguiar CL, Erkan D. Catastrophic antiphospholipid syndrome: how to diagnose a rare but highly fatal disease. *Ther Adv Musculoskelet Dis* 2013;5:305-14.
 25. de Prost N, Razazi K, Brun-Buisson C. Unrevealing culture-negative severe sepsis. *Crit Care* 2013;17:1001.
 26. Blessing J, Prada A, Siegel DM, Villanueva J, Olson J, Ilowite NT, et al. The diagnostic significance of soluble CD163 and soluble interleukin-2 receptor alpha-chain in macrophage activation syndrome and untreated new-onset systemic juvenile idiopathic arthritis. *Arthritis Rheum* 2007;56:965-71.
 27. Grom AA, Mellins ED. Macrophage activation syndrome: advances towards understanding pathogenesis. *Curr Opin Rheumatol* 2010;22:561-6.
 28. Schwarz-Eywill M, Heilig B, Bauer H, Breitbart A, Pezzutto A. Evaluation of serum ferritin as a marker for adult Still's disease activity. *Ann Rheum Dis* 1992;51:683-5.
 29. Akritidis N, Giannakakis I, Giouglis T. Ferritin levels and response to treatment in patients with Adult Still's disease. *J Rheumatol* 1996;23:201-2.
 30. Liu Z, Lv X, Tang G. Clinical features and prognosis of adult-onset Still's disease: 75 cases from China. *Int J Clin Exp Med* 2015;8:16634-9.
 31. Gerfaud-Valentin M, Maucourt-Boulch D, Hot A, Iwaz J, Ninet J, Durieu I, et al. Adult-onset still disease: manifestations, treatment, outcome, and prognostic factors in 57 patients. *Medicine* 2014;93:91-9.
 32. Ravelli A, Minoia F, Davì S, Horne A, Bovis F, Pistorio A, et al. Expert consensus on dynamics of laboratory tests for diagnosis of macrophage activation syndrome complicating systemic juvenile idiopathic arthritis. *RMD Open* 2016;2:e000161.
 33. Kaito K, Kobayashi M, Katayama T, Otsubo H, Ogasawara Y, Sekita T, et al. Prognostic factors of hemophagocytic syndrome in adults: analysis of 34 cases. *Eur J Haematol* 1997;59:247-53.
 34. Takahashi N, Chubachi A, Kume M, Hatano Y, Komatsuda A, Kawabata Y, et al. A clinical analysis of 52 adult patients with hemophagocytic syndrome: the prognostic significance of the underlying diseases. *Int J Hematol* 2001;74:209-13.
 35. Arca M, Fardet L, Galicier L, Rivière S, Marzac C, Aumont C, et al. Prognostic factors of early death in a cohort of 162 adult haemophagocytic syndrome: impact of triggering disease and early treatment with etoposide. *Br J Haematol* 2015;168:63-8.
 36. Ruscitti P, Cipriani P, Ciccia F, Masedu F, Liakouli V, Carubbi F, et al. Prognostic factors of macrophage activation syndrome, at the time of diagnosis, in adult patients affected by autoimmune disease: analysis of 41 cases collected in 2 rheumatologic centers. *Autoimmun Rev* 2017;16:16-21.