

Sustained Benefits of Exercise-based Motivational Interviewing, but Only among Nonusers of Opioids in Patients with Fibromyalgia

Sunghye Kim, James E. Slaven, and Dennis C. Ang

ABSTRACT. Objective. Given the known side effects of opioids and their potential effects on cognition, we sought to evaluate the benefits of motivational interviewing (MI) to promote physical activity on 2 subsets of participants with fibromyalgia (FM): nonusers and users of opioids.

Methods. This was a secondary data analysis of a 36-week randomized controlled trial to assess the efficacy of MI to promote physical activity among participants with FM. Participants were randomized to 1 of 2 treatment arms: 6 phone-based MI sessions (n = 107) or 6 sessions of FM self-management instructions [attention control (AC), n = 109]. The primary outcomes were changes in physical function (Medical Outcomes Study Short Form-36), pain severity (Brief Pain Inventory), global FM symptom severity (Fibromyalgia Impact Questionnaire), and the amount of light to moderate physical activity (LMPA) from baseline to each followup visit. At study entry, subjects were categorized as opioid nonusers versus users. Repeated measures ANOVA was used to assess treatment effects adjusting for potential confounders.

Results. Of the 216 participants, 145 (67%) were nonusers and 71 (33%) were opioid users. Among nonusers, MI was associated with improved physical function, reduced pain severity, and global FM severity, and increased LMPA at 6-month followup. Among opioid users, there were no significant differences in any outcome measures between the MI and AC groups.

Conclusion. Exercise-based MI was associated with sustained clinical benefits 6 months after completion of therapy, but only for those who were not taking opioids. (J Rheumatol First Release December 1 2016; doi:10.3899/jrheum.161003)

Key Indexing Terms:

OPIOID RISK

MOTIVATIONAL INTERVIEWING

TREATMENT MODERATOR

FIBROMYALGIA

Five million patients in the United States¹ have fibromyalgia (FM), with estimated annual costs of \$18,671 per patient². Exercise, both aerobic and resistance training, improves global well-being, physical function, and pain in patients with FM³, and is considered a cornerstone of FM management. However, despite the well-known benefits of exercise, patients with FM are less active than healthy controls, and only 31% of patients with FM reported walking regularly⁴. For example, in a report of a 12-week supervised exercise

program, adherence to aerobic exercise (participation in at least 120 min of aerobic exercise per week) was only about 40%⁵.

Motivational interviewing (MI) is a collaborative conversational approach for strengthening a person's motivation and commitment to change. MI is associated with better adherence to medications⁶, higher rates of successful smoking cessation⁷, and increased physical activity⁸. Given this evidence, we previously hypothesized that MI would promote and help maintain adherence to an exercise prescription. In our study, MI was associated with increased physical activity and improved global FM symptom severity, but only during the acute treatment phase. Six months after completion of therapy (i.e., primary endpoint), benefits involving self-reported physical activity and clinical outcomes were not sustained⁹. The absence of longterm benefits of MI is likely multifactorial, one of which is the presence of treatment moderators (e.g., use of opioids) that may diminish the effects of MI.

With a more liberal prescribing pattern in the 1990s and a wider availability of opioids, chronic opioid usage has increased significantly in the past 2 decades with associated increases in deaths from overdoses and misuse, and in hospi-

From the Department of Medicine, Division of General Internal Medicine, and Department of Medicine, Division of Rheumatology, Wake Forest School of Medicine, Winston-Salem, North Carolina; Division of Biostatistics, Indiana University, Indianapolis, Indiana, USA.

Funded by the US National Institute of Arthritis and Musculoskeletal and Skin Diseases (1R01AR054324-01A1).

S. Kim, MD, MMSc, Assistant Professor, Department of Medicine, Division of General Internal Medicine, Wake Forest School of Medicine; J.E. Slaven, MS, Biostatistician, Division of Biostatistics, Indiana University; D.C. Ang, MD, MS, Associate Professor, Department of Medicine, Division of Rheumatology, Wake Forest School of Medicine.

Address correspondence to Dr. D.C. Ang, Department of Medicine, Division of Rheumatology, Wake Forest School of Medicine, Medical Center Boulevard, Winston-Salem, North Carolina 27157-1009, USA. E-mail: dang@wakehealth.edu

Accepted for publication November 4, 2016.

Personal non-commercial use only. The Journal of Rheumatology Copyright © 2016. All rights reserved.

talization for substance abuse treatment¹⁰. Despite a consensus against the longterm use of opioids for FM from the American College of Neurology¹¹ and the European League Against Rheumatism¹², 11%–69% of patients with FM are reported to take them¹³. In patients with FM, the use of opioids is associated with worse clinical outcomes, such as pain severity, functional status, insomnia, depression, and disability¹⁴. Moreover, opioids are associated with deficits in cognitive function, especially in domains of attention, inhibitory control, strategic planning, decision making, and learning and memory — domains that are essential to behavioral changes¹⁵. Given the potential complications of opioids in cognitive function¹⁵ and FM-relevant clinical outcomes¹⁴, we hypothesized that MI would be beneficial among nonusers of opioids, but ineffective among opioid users. The objective of this report was to evaluate the benefits of MI over attention control (AC) on 2 subsets of participants with FM: nonusers and users of opioid.

MATERIALS AND METHODS

Study design. Ours was a secondary analysis of a 36-week randomized controlled trial (RCT) to assess the efficacy of MI to promote physical activity among patients with FM⁹. Participants were randomized to 1 of 2 groups: an MI group or an AC group. The MI group received 6 telephone-delivered, exercise-based MI sessions over 12 weeks. The AC group received 6 telephone contacts over 12 weeks to control for time and therapist attention. Outcome assessments were conducted at baseline, immediately post-treatment (Week 12), and at the 3-month (Week 24) and 6-month (Week 36) followups. The study was carried out in accordance with The Code of Ethics of the World Medical Association (Declaration of Helsinki) for experiments involving humans. Study procedures, including written informed consent, were approved by the Indiana University–Purdue University Indianapolis Institutional Review Board (Study Number: 0708-62). The study enrollment started in December 2007 and the followup was completed in March 2010.

Study population. All participants met the following entry criteria: (1) the 1990 American College of Rheumatology classification criteria for FM¹⁶, (2) the average Brief Pain Inventory (BPI) pain severity score ≥ 4 ¹⁷, (3) the FM Impact Questionnaire-Physical Impact score ≥ 2 ¹⁸, (4) receiving stable doses of medication for FM ≥ 4 weeks, and (5) being between the ages of 18 and 65 years old. To avoid the floor effect, we included only FM patients with moderate to severe symptoms. We excluded individuals with (1) known cardiovascular (CV) disease, (2) moderate to severe chronic lung disease, (3) uncontrolled hypertension, (4) orthopedic or musculoskeletal conditions that would prohibit moderate-intensity exercise, (5) active suicidal ideation, (6) planned elective surgery during the study period, (7) ongoing unresolved disability claims, (8) inflammatory rheumatic conditions (e.g., rheumatoid arthritis), (9) current use of heart rate–lowering medications (e.g., β -blocker), (10) pregnancy, (11) psychosis, or (12) currently participating in a structured exercise program 3 times or more per week. The diagnosis was corroborated by the corresponding author of our study (DCA).

Opioid usage. Opioid users were defined as patients who were taking any opioids (e.g., oxycodone, hydrocodone, propoxyphene, morphine, fentanyl, and codeine) for at least 2 weeks at the time of enrollment. The information on dose was not collected. All participants were taking opioid regularly (e.g., hydrocodone twice daily); none were taking it as needed. We did not consider medication changes that occurred after enrollment.

Randomization. Participants were randomized to 1 of the 2 treatment arms stratified by depression status, sex, and referral source (specialty vs primary care). Allocation to treatment arm was carried out by a computer-generated randomization list with a permuted block size of 2.

Supervised exercise training. All participants received an aerobic exercise prescription and 2 individualized supervised exercise sessions from a qualified fitness instructor who was blinded to treatment assignment. The written exercise prescription included the initial exercise intensity [(40–50% of the heart rate reserve (HRR)], duration (10–12 min/session), and frequency (2 days/week). Participants were instructed to gradually increase their total volume of exercise to a maximum of 55%–65% of HRR, 28–30 min/session, and 3–4 day/week over the ensuing 36 weeks. Details of the exercise prescription have been previously described¹⁹.

After the 2 supervised exercise sessions, MI participants received the phone-delivered, exercise-based MI and the AC group received the phone-delivered education on FM-relevant topics. Each participant interacted with the same interventionist (MI-trained health practitioner or health educator) throughout our study.

Exercise-based MI. MI participants received 6 telephone calls over 12 weeks delivered by trained interventionists who used a standard MI handbook²⁰. The first 2 MI sessions focused on enhancing patient motivation to exercise by eliciting (1) self-motivational statements related to problem recognition and concern about the status quo, (2) intent to participate in graded aerobic exercise, and (3) optimism that exercise-related change is possible. Calls 3 and 4 were devoted to strategies that strengthen commitment to exercise by helping the participant develop a plan for change and reviewing the positive consequences of graded aerobic exercise. The last 2 calls focused on follow-through strategies to prevent relapse of inactivity. As previously reported⁹, adherence to the principles and spirit of MI was generally well maintained in the MI group, as assessed by the Motivational Interviewing Treatment Integrity scale²¹.

AC group. Participants in the AC group received didactic health information delivered over the telephone on the following topics: (1) an overview of FM, (2) pain, (3) fatigue, (4) sleep, (5) stress, and (6) living well with FM.

Measures. All assessments were conducted in 1 day.

Body mass index (BMI). The BMI was calculated by dividing the weight in kilograms by height squared in meters.

Community Health Activities Model Program for Seniors (CHAMPS). CHAMPS is a 15-min survey that asks about the frequency and duration of physical activity in a typical week of the past month. The CHAMPS questionnaire provides a list of various activities ranging from light to vigorous intensity. Research supports the validity, reliability, and sensitivity to changes of CHAMPS among older adults²². The questionnaire provides measures of estimated hours per week spent performing light, moderate, and vigorous physical activity²². We concentrated on light to moderate physical activity (LMPA) because our exercise prescription was focused on LMPA, and vigorous exercise is poorly tolerated by patients with FM²³.

Fibromyalgia Impact Questionnaire (FIQ). The FIQ is a disease-specific, well-validated measure assessing a number of functioning domains related to FM¹⁸. The FIQ includes the FIQ-physical impairment, 6 visual analog scales for measuring FM-related symptoms (e.g., pain and fatigue), and 2 single-item questions assessing work status and overall well-being. A higher FIQ total score (range 0 to 100) indicates greater severity of global FM symptoms.

Medical Outcomes Study Short Form-36 (SF-36). The SF-36 is a multi-purpose, short-form health survey with 36 questions on various aspects of health. For our current study, we calculated the physical functioning (PF) scale to assess physical function. The 10-item PF scale measures patient's perception of their limitations in the performance of various types of physical activities. Scale scores range from 0 to 100, with higher scores indicating better functioning. The psychometric properties of the PF scale are well established in patients with chronic pain²⁴, with demonstrated responsiveness to both medical and nonmedical interventions in individuals with FM^{25,26}.

Patient Health Questionnaire 8 (PHQ-8). The PHQ-8 Depression Scale is a self-administered scale that assesses core symptoms of major depressive disorder. Scores can range from 0 to 24; higher scores indicate more severe depressive symptoms²⁷.

BPI. The BPI is a measure of pain with proven reliability and validity across different pain conditions²⁸, including FM²⁹. In our report, BPI pain severity is the average of 4 items asking about current, worse, least, and average pain in the past week.

Statistical analyses. Repeated ANOVA measures were used to assess treatment effects within each category. Mixed linear models were used for our analysis to control for covariates and to use the appropriate covariance structure. All analyses were adjusted for the baseline value of the outcome and BMI. BMI was the only baseline characteristic that was significantly different between MI and AC. All analytic assumptions for the statistical models were verified and all analyses were performed using SAS version 9.4 (SAS Institute).

RESULTS

Figure 1 shows the flow of participants in the trial. As seen in Table 1, baseline characteristics were similar across treatment groups except for BMI. MI participants were slightly heavier than AC participants ($p = 0.07$). At study entry, 71 (33%) were taking opioids while 145 (67%) were not. Of the 71 participants taking opioids, 32 (45%) participants were taking hydrocodone, 13 (18.3%) were taking propoxyphene, 7 (9.8%) were taking oxycodone (short- and/or long-acting), 1 (1.4%) was taking morphine, and 18 (25.3%)

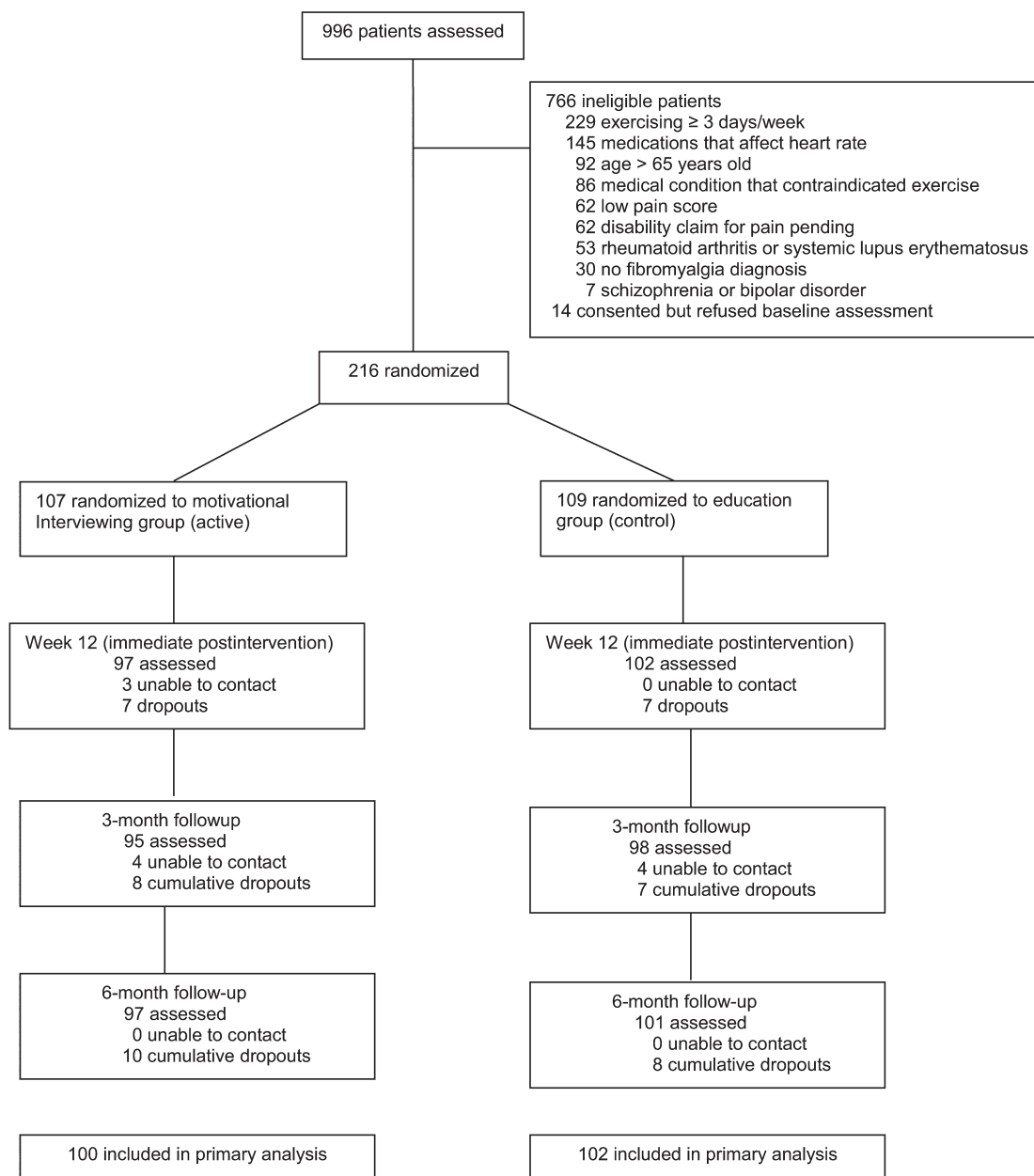


Figure 1. Flowchart of participants in the parent trial.

Table 1. Baseline characteristics. Values are the mean (SD) unless otherwise specified.

Characteristics	Motivational Interviewing, n = 107	Attention Control, n = 109
Demographics		
Age, yrs	46.0 (11.4)	45.7 (11.0)
Female, %	96	95
Non-Hispanic, %	99.1	98.2
White, %	90.7	86.2
Education, > high school, %	76.6	78.9
Married, %	57.9	64.2
Employed, %	57.9	49.5
Clinical variables		
Body mass index, kg/m ²	32.3 (7.6)	30.5 (6.6)
FM diagnosis duration, yrs	8.9 (6.4)	9.1 (7.6)
PHQ-8 depression, range 0–24*	12.4 (4.8)	12.7 (5.1)
BPI pain severity, range 0–10*	5.9 (1.2)	6.0 (1.4)
SF-36 physical function	41.36 (17.7)	40.28 (20.2)
FIQ total, range 0–100*	67.5 (12.0)	66.6 (13.5)
Prescribed medications, %		
Nontricyclic antidepressants	66.4	57.8
Anticonvulsants	31.8	27.5
Opioid analgesics	32.7	33.0
Physical activity, self-report		
CHAMPS		
LMPA, h/week	6.5 (5.6)	6.7 (7.4)

* Higher score indicates a worse state of health (except for SF-36 physical function). FM: fibromyalgia; PHQ-8: Patient Health Questionnaire 8; BPI: Brief Pain Inventory; SF-36: Medical Outcomes Study Short Form-36; FIQ: Fibromyalgia Impact Questionnaire; CHAMPS: Community Health Activities Model Program for Seniors; LMPA: light to moderate physical activity.

were taking 2 or more classes of opioids. None of the participants were receiving codeine or tapentadol. Compared with nonusers, opioid users had fewer years of education (\geq high school graduate 67.6% vs 82.8%, $p = 0.012$), higher mean (\pm SD) depression scores on the PHQ-8 questionnaire (14.08 ± 5.14 vs 11.79 ± 4.65 , $p = 0.001$), worse physical function on the SF-36 questionnaire (36.62 ± 18.47 vs 42.96 ± 18.94 , $p = 0.022$), and worse total scores on the FIQ (70.99 ± 12.30 vs 65.12 ± 12.53 , $p = 0.001$). There were no statistically significant differences between nonusers and users of opioid regarding BPI pain severity [nonusers 5.86 (1.25) vs users 6.15 (1.30), $p = 0.115$] and the amount of LMPA [nonusers 6.58 (6.78) vs users 6.66 (5.98) h/week, $p = 0.927$].

Main outcomes. Table 2 shows the comparison between the MI and AC groups stratified by opioid usage. Among opioid nonusers, MI (vs AC) was associated with significantly greater improvement in SF-36 physical function, greater reduction in BPI pain and global FM severity, and a larger increase in the amount of LMPA. On the other hand, among opioid users, there were no significant treatment group differences in SF-36 physical function, BPI pain, global FM severity, and the amount of LMPA.

DISCUSSION

In our secondary analysis of a randomized controlled trial using MI to promote physical activity in FM, MI improved

physical function, reduced pain and global FM severity, and increased the volume of LMPA among opioid nonusers, but not among opioid users.

MI was developed as a cognitive-behavioral strategy using a collaborative conversation approach for strengthening a person's motivation and commitment to behavior change³⁰. MI has demonstrated effectiveness in nonpharmacological management of obesity³¹, self-management of chronic pain³², and medication adherence³³. A metaanalysis found a moderate level of evidence that MI had a small effect in increasing physical activity levels in adults with obesity, CV condition, or multiple sclerosis⁸. Except for our previously completed randomized controlled trial⁹, no study to date has used MI to promote physical activity in individuals with chronic pain.

Unlike other medical patient populations, patients with chronic pain are fearful that exercise might exacerbate their existing pain or result in a new injury or pain site, which may interfere with their planned physical exercise program³⁴. Fear of pain is a potent inhibitor that keeps patients with chronic pain from regular exercise regimens. Most patients with FM need more than advice to exercise; they need assistance overcoming the barriers to exercise. Our MI program was designed to elicit self-motivational statements, help participants develop a plan for change, and provide strategies and plans to overcome barriers and maintain the intended behavioral changes.

Table 2. Change from baseline to Week 36. Values are means (standard errors) adjusted for baseline outcome and body mass index.

Change from Baseline to Week 36	MI	AC	p
Improvement in SF-36 physical function			
Opioid users	10.25 (1.94)	7.00 (1.87)	0.234
Opioid nonusers	14.47 (1.23)	9.66 (1.22)	0.006*
Reduction in BPI pain severity			
Opioid users	-0.80 (0.17)	-0.76 (0.16)	0.930
Opioid nonusers	-1.49 (0.12)	-0.98 (0.12)	0.004*
Improvement in global FM severity, FIQ total			
Opioid users	-9.60 (1.71)	-9.49 (1.66)	0.963
Opioid nonusers	-15.47 (1.21)	-11.85 (1.20)	0.036*
Increase in LMPA**			
Opioid users	3.64 (0.84)	3.26 (0.82)	0.746
Opioid nonusers	4.68 (0.52)	3.01 (0.51)	0.023*

* $p < 0.05$; analyses included subjects ($n = 198$, 92% of 216) with 6-month followup data. ** No. hours per week. MI: motivational interviewing; AC: attention control; SF-36: Medical Outcomes Study Short Form-36; BPI: Brief Pain Inventory; FM: fibromyalgia; FIQ: Fibromyalgia Impact Questionnaire; LMPA: light to moderate physical activity.

In our primary outcome paper⁹, 6 months after completion of treatment, MI was not superior to AC in any of the physical activity and clinical measures. We postulate that the use of opioid may have attenuated the beneficial effects of MI to promote physical activity. One possible explanation is that opioids may impair cognition³⁵. Opioids decrease activation in regions involved in cognitive control and attention, such as the dorsolateral prefrontal cortex, anterior cingulate cortex, and inferior parietal lobes, resulting in deficits in executive function³⁶. Individuals who were dependent on opioids had volumetric loss in the amygdala, which is responsible for emotions, survival instincts, and memory³⁷; they also showed decreased functional connectivity for the anterior insula, nucleus accumbens, and amygdala subdivisions³⁸. Opioid receptors, including the mu (MOR), delta, and kappa, interact with both endogenous and exogenous opioids³⁹. In animal studies, administration of a selective MOR agonist and endogenous MOR agonists impair working memory⁴⁰. In a study of 93 opioid-dependent patients and 30 normal controls, the opioid dependents had poorer neuropsychological performance, including verbal fluency, attention, and memory. After 1 week of detoxification, the opioid-dependent group performed equally well compared with the normal controls⁴¹. These studies suggest that opioid usage could impair cognition that may hinder processing and retention of information delivered during an MI session.

A second possible explanation is that the common side effects (i.e., fatigue and sleep disorder) of opioids might have (indirectly) resulted in lower physical activity⁴². The association between opioid and sleep-disordered breathing is well established⁴³. Among chronic opioid users who underwent overnight polysomnography, 36% had obstructive sleep apnea, 24% had central sleep apnea, 21% had combined obstructive and central sleep apnea, and only 15% did not have sleep apnea⁴⁴. Compared with well-matched healthy

controls, the chronic opioid group had a significantly higher apnea-hypopnea index (43.5/h vs 30.2/h, $p < 0.05$), indicating more sleep disturbance⁴⁵. Opioids also reduce rapid eye movement (REM) and non-REM phases of sleep⁴⁶. Among our study participants, opioid-induced daytime sleepiness and fatigue may have rendered exercise-based MI seemingly less effective.

Finally, the use of opioid could be a surrogate marker of patients who are more complex to treat and less likely to respond to any treatment. In our study, compared with nonusers, participants who used opioids had greater functional impairment (as measured by SF-36 physical function) and FM-related symptom burden (as measured by FIQ). The association of the use of opioids with greater psychological distress and worse health status is well reported in the literature^{47,48}.

Our current study has some limitations. Given that the current report was a posthoc analysis of a previously completed RCT, our study findings could have resulted from Type 1 error (i.e., false-positive findings among nonusers of opioids) and/or Type 2 error (i.e., false-negative among opioid users). Therefore, appropriate caution about the conclusions must be made. However, our study findings were consistent across all 4 outcome measures in both groups of participants. Further, there are plausible neurological, biological, and neuropsychological mechanisms⁴⁴ that support the concept that opioids may reduce the efficacy of MI. A future larger study is needed to confirm our study findings. Second, we defined opioid users and nonusers based on self-report (verified by the medication container) at the time of the enrollment. We did not consider drug changes during the study. Participants who self-reported opioid use at study entry might have discontinued the medication during the study, and vice versa. However, cross-contamination between nonusers and users would only weaken (rather than

magnify) the differential treatment effects that we observed. Third, tramadol was not considered an opioid in our study. However, the proportions of subjects taking tramadol were not significantly different between opiate nonusers and users [30 (20.7%) vs 13 (18.3%), $p = 0.7$], and thus it should not bias the study results. Nevertheless, our study results did not change when the 30 nonusers who were receiving tramadol were reclassified as opiate users (data not shown). Fourth, although we defined opioid users as participants who have been receiving opioids > 2 weeks, we did not distinguish chronic versus acute use of opioids. However, a previous study reported that a significant majority of patients with FM who were prescribed opioids were still taking them 1 year later⁴⁹. Thus, our participants were likely chronic users of opioids. Nonetheless, some opioid users might have been taking them for only a short time period (e.g., 2–12 weeks). In addition, we only measured patient-reported outcomes, not performance-based outcomes, while it is known that there is disagreement between the 2 outcomes⁵⁰. Finally, it would have been interesting to see whether the total daily dose of opioids influences the study outcome. Unfortunately, we did not collect such information to assess a possible dose-response relationship.

To our knowledge, our study is the first to show that exercise-based MI was associated with sustained benefits in increasing physical activity and improving clinical outcomes in patients with FM who were nonopioid users. In today's world of cost-conscious healthcare delivery, it is important to precisely predict treatment effect and tailor treatment to maximize effects. Clinicians may consider offering exercise-based MI among patients who are not taking opioids to enhance FM-relevant treatment outcomes. Further, our study raises an important testable hypothesis that opioids may attenuate the benefits of psychoeducational treatment intervention (i.e., MI) in patients with FM. Using brain neuroimaging and neurophysiologic tools, future investigations should seek to understand the relationships among physical activity, opioids, and the neural substrate of motivation.

REFERENCES

- Lawrence RC, Felson DT, Helmick CG, Arnold LM, Choi H, Deyo RA, et al; National Arthritis Data Workgroup. Estimates of the prevalence of arthritis and other rheumatic conditions in the United States. Part II. *Arthritis Rheum* 2008;58:26-35.
- Skaer TL. Fibromyalgia: disease synopsis, medication cost effectiveness and economic burden. *Pharmacoeconomics* 2014;32:457-66.
- Bidonde J, Busch AJ, Bath B, Milosavljevic S. Exercise for adults with fibromyalgia: an umbrella systematic review with synthesis of best evidence. *Curr Rheumatol Rev* 2014;10:45-79.
- Segura-Jiménez V, Álvarez-Gallardo IC, Estévez-López F, Soriano-Maldonado A, Delgado-Fernández M, Ortega FB, et al. Differences in sedentary time and physical activity between female patients with fibromyalgia and healthy controls: the al-Ándalus project. *Arthritis Rheumatol* 2015;67:3047-57.
- Dobkin PL, Da Costa D, Abrahamowicz M, Drits M, Du Berger R, Fitzcharles MA, et al. Adherence during an individualized home based 12-week exercise program in women with fibromyalgia. *J Rheumatol* 2006;33:333-41.
- Palacio A, Garay D, Langer B, Taylor J, Wood BA, Tamariz L. Motivational interviewing improves medication adherence: a systematic review and meta-analysis. *J Gen Intern Med* 2016;31:929-40.
- Lindson-Hawley N, Thompson TP, Begh R. Motivational interviewing for smoking cessation. *Cochrane Database Syst Rev* 2015:CD006936.
- O'Halloran PD, Blackstock F, Shields N, Holland A, Iles R, Kingsley M, et al. Motivational interviewing to increase physical activity in people with chronic health conditions: a systematic review and meta-analysis. *Clin Rehabil* 2014;28:1159-71.
- Ang DC, Kaleth AS, Bigatti S, Mazzuca SA, Jensen MP, Hilligoss J, et al. Research to encourage exercise for fibromyalgia (REEF): use of motivational interviewing, outcomes from a randomized-controlled trial. *Clin J Pain* 2013;29:296-304.
- Webster LR. Chronic pain and the opioid conundrum. *Anesthesiol Clin* 2016;34:341-55.
- Franklin GM; American Academy of Neurology. Opioids for chronic noncancer pain: a position paper of the American Academy of Neurology. *Neurology* 2014;83:1277-84.
- Macfarlane GJ, Kronisch C, Dean LE, Atzeni F, Hauser W, Fluss E, et al. EULAR revised recommendations for the management of fibromyalgia. *Ann Rheum Dis* 2016 Jul 4 (E-pub ahead of print).
- Goldenberg DL, Clauw DJ, Palmer RE, Clair AG. Opioid use in fibromyalgia: a cautionary tale. *Mayo Clin Proc* 2016;91:640-8.
- Fitzcharles MA, Faregh N, Ste-Marie PA, Shir Y. Opioid use in fibromyalgia is associated with negative health related measures in a prospective cohort study. *Pain Res Treat* 2013;2013:898493.
- Ersche KD, Sahakian BJ. The neuropsychology of amphetamine and opiate dependence: implications for treatment. *Neuropsychol Rev* 2007;17:317-36.
- Wolfe F, Smythe HA, Yunus MB, Bennett RM, Bombardier C, Goldenberg DL, et al. The American College of Rheumatology 1990 criteria for the classification of fibromyalgia. Report of the Multicenter Criteria Committee. *Arthritis Rheum* 1990;33:160-72.
- Keller S, Bann CM, Dodd SL, Schein J, Mendoza TR, Cleeland CS. Validity of the brief pain inventory for use in documenting the outcomes of patients with noncancer pain. *Clin J Pain* 2004; 20:309-18.
- Bennett R. The Fibromyalgia Impact Questionnaire (FIQ): a review of its development, current version, operating characteristics and uses. *Clin Exp Rheumatol* 2005;23 Suppl 39:S154-62.
- Ang DC, Kaleth AS, Bigatti S, Mazzuca S, Saha C, Hilligoss J, et al. Research to Encourage Exercise for Fibromyalgia (REEF): use of motivational interviewing design and method. *Contemp Clin Trials* 2011;32:59-68.
- Ang D, Kesavalu R, Lydon JR, Lane KA, Bigatti S. Exercise-based motivational interviewing for female patients with fibromyalgia: a case series. *Clin Rheumatol* 2007;26:1843-9.
- Moyers TB, Martin T, Manuel JK, Hendrickson SM, Miller WR. Assessing competence in the use of motivational interviewing. *J Subst Abuse Treat* 2005;28:19-26.
- Stewart AL, Mills KM, King AC, Haskell WL, Gillis D, Ritter PL. CHAMPS physical activity questionnaire for older adults: outcomes for interventions. *Med Sci Sports Exerc* 2001;33:1126-41.
- van Santen M, Bolwijn P, Landewé R, Verstappen F, Bakker C, Hidding A, et al. High or low intensity aerobic fitness training in fibromyalgia: does it matter? *J Rheumatol* 2002;29:582-7.
- Ware JE Jr, Sherbourne CD. The MOS 36-item short-form health survey (SF-36). I. Conceptual framework and item selection. *Med Care* 1992;30:473-83.
- Bennett RM, Kamin M, Karim R, Rosenthal N. Tramadol and acetaminophen combination tablets in the treatment of fibromyalgia

- pain: a double-blind, randomized, placebo-controlled study. *Am J Med* 2003;114:537-45.
26. Crofford LJ, Rowbotham MC, Mease PJ, Russell IJ, Dworkin RH, Corbin AE, et al; Pregabalin 1008-105 Study Group. Pregabalin for the treatment of fibromyalgia syndrome: results of a randomized, double-blind, placebo-controlled trial. *Arthritis Rheum* 2005;52:1264-73.
 27. Kroenke K, Strine TW, Spitzer RL, Williams JB, Berry JT, Mokdad AH. The PHQ-8 as a measure of current depression in the general population. *J Affect Disord* 2009;114:163-73.
 28. Tan G, Jensen MP, Thornby JI, Shanti BF. Validation of the Brief Pain Inventory for chronic nonmalignant pain. *J Pain* 2004;5:133-7.
 29. Schaefer C, Mann R, Masters ET, Cappelleri JC, Daniel SR, Zlateva G, et al. The comparative burden of chronic widespread pain and fibromyalgia in the United States. *Pain Pract* 2016;16:565-79.
 30. Miller WR, Rollnick S. *Motivational interviewing: preparing people to change addictive behavior*. New York: Guilford Press; 1991.
 31. Armstrong MJ, Mottershead TA, Ronksley PE, Sigal RJ, Campbell TS, Hemmelgarn BR. Motivational interviewing to improve weight loss in overweight and/or obese patients: a systematic review and meta-analysis of randomized controlled trials. *Obes Rev* 2011;12:709-23.
 32. Tse MM, Vong SK, Tang SK. Motivational interviewing and exercise programme for community-dwelling older persons with chronic pain: a randomised controlled study. *J Clin Nurs* 2013;22:1843-56.
 33. Moral RR, Torres LA, Ortega LP, Larumbe MC, Villalobos AR, Garcia JA, et al. Effectiveness of motivational interviewing to improve therapeutic adherence in patients over 65 years old with chronic diseases: A cluster randomized clinical trial in primary care. *Patient Educ Couns* 2015;98:977-83.
 34. Ramsay C, Moreland J, Ho M, Joyce S, Walker S, Pullar T. An observer-blinded comparison of supervised and unsupervised aerobic exercise regimens in fibromyalgia. *Rheumatology* 2000;39:501-5.
 35. Fishbein DH, Krupitsky E, Flannery BA, Langevin DJ, Bobashev G, Verbitskaya E, et al. Neurocognitive characterizations of Russian heroin addicts without a significant history of other drug use. *Drug Alcohol Depend* 2007;90:25-38.
 36. Garland EL, Froeliger B, Zeidan F, Partin K, Howard MO. The downward spiral of chronic pain, prescription opioid misuse, and addiction: cognitive, affective, and neuropsychopharmacologic pathways. *Neurosci Biobehav Rev* 2013;37:2597-607.
 37. Maren S. Long-term potentiation in the amygdala: a mechanism for emotional learning and memory. *Trends Neurosci* 1999;22:561-7.
 38. Upadhyay J, Maleki N, Potter J, Elman I, Rudrauf D, Knudsen J, et al. Alterations in brain structure and functional connectivity in prescription opioid-dependent patients. *Brain* 2010;133:2098-114.
 39. Lutz PE, Kieffer BL. The multiple facets of opioid receptor function: implications for addiction. *Curr Opin Neurobiol* 2013;23:473-9.
 40. Itoh J, Ukai M, Kameyama T. Dynorphin A-(1-13) potently improves the impairment of spontaneous alternation performance induced by the mu-selective opioid receptor agonist DAMGO in mice. *J Pharmacol Exp Ther* 1994;269:15-21.
 41. Guerra D, Solé A, Camí J, Tobeña A. Neuropsychological performance in opiate addicts after rapid detoxification. *Drug Alcohol Depend* 1987;20:261-70.
 42. Painter JT, Crofford LJ. Chronic opioid use in fibromyalgia syndrome: a clinical review. *J Clin Rheumatol* 2013;19:72-7.
 43. Van Ryswyk E, Antic N. Opioids and sleep-disordered breathing. *Chest* 2016;150:934-44.
 44. Mogri M, Desai H, Webster L, Grant BJ, Mador MJ. Hypoxemia in patients on chronic opiate therapy with and without sleep apnea. *Sleep Breath* 2009;13:49-57.
 45. Walker JM, Farney RJ, Rhondeau SM, Boyle KM, Valentine K, Cloward TV, et al. Chronic opioid use is a risk factor for the development of central sleep apnea and ataxic breathing. *J Clin Sleep Med* 2007;3:455-61.
 46. Cheatle MD, Webster LR. Opioid therapy and sleep disorders: risks and mitigation strategies. *Pain Med* 2015;16 Suppl 1:S22-6.
 47. Krebs EE, Kroenke K, Wu J, Bair MJ, Kozak MA, Yu Z. Opioid use as a predictor of health care use and pain outcomes: analysis of clinical trial data. *Pain Med* 2016 Feb 25 (E-pub ahead of print).
 48. Bair MJ, Bohnert AS. Overdoses in patients on opioids: risks associated with mental health conditions and their treatment. *J Gen Intern Med* 2015;30:1051-3.
 49. Halpern R, Shah SN, Cappelleri JC, Masters ET, Clair A. Evaluating guideline-recommended pain medication use among patients with newly diagnosed fibromyalgia. *Pain Pract* 2015 Oct 7 (E-pub ahead of print).
 50. Segura-Jiménez V, Munguía-Izquierdo D, Camiletti-Moirón D, Alvarez-Gallardo IC, Ortega FB, Ruiz JR, et al. Comparison of the International Physical Activity Questionnaire (IPAQ) with a multi-sensor armband accelerometer in women with fibromyalgia: the al-Andalus project. *Clin Exp Rheumatol* 2013;31 Suppl 79: S94-101.