

Inflammatory Cells in Patients with Endstage Knee Osteoarthritis: A Comparison between the Synovium and the Infrapatellar Fat Pad

Inge R. Klein-Wieringa, Badelog J.E. de Lange-Brokaar, Erlangga Yusuf, Stefan N. Andersen, Joanneke C. Kwekkeboom, Herman M. Kroon, Gerjo J.V.M. van Osch, Anne-Marie Zuurmond, Vedrana Stojanovic-Susulic, Rob G.H.H. Nelissen, René E.M. Toes, Margreet Kloppenburg, and Andreea Ioan-Facsinay

ABSTRACT. Objective. To get a better understanding of inflammatory pathways active in the osteoarthritic (OA) joint, we characterized and compared inflammatory cells in the synovium and the infrapatellar fat pad (IFP) of patients with knee OA.

Methods. Infiltrating immune cells were characterized by flow cytometry in 76 patients with knee OA (mean age 63.3, 52% women, median body mass index 28.9) from whom synovial tissue (n = 40) and IFP (n = 68) samples were obtained. Pain was assessed by the visual analog scale (VAS; 0–100 mm). Spearman rank correlations and linear regression analyses adjusted for sex and age were performed.

Results. Macrophages and T cells, followed by mast cells, were the most predominant immune cells in the synovium and IFP, and were equally abundant in these tissues. Macrophages and T cells secreted mostly proinflammatory cytokines even without additional stimulation, indicating their activated state. Accordingly, most CD4+ T cells had a memory phenotype and contained a significant population of cells expressing activation markers (CD25+, CD69+). Interestingly, the percent of CD69+ T cells was higher in synovial than IFP CD4+ T cells. Preliminary analyses indicated that the number of synovial CD4+ T cells were associated with VAS pain (β 0.51, 95% CI 0.09–1.02, $p = 0.02$).

Conclusion. Our data suggest that the immune cell composition of the synovium and the IFP is similar, and includes activated cells that could contribute to inflammation through secretion of proinflammatory cytokines. Moreover, preliminary analyses indicate that synovial CD4+ T cells might associate with pain in patients with endstage OA of the knee. (J Rheumatol First Release March 15 2016; doi:10.3899/jrheum.151068)

Key Indexing Terms:

OSTEOARTHRITIS
PAIN

SYNOVITIS
INFRAPATELLAR FAT PAD

IMMUNE SYSTEM
KNEE

Knee osteoarthritis (OA) is a joint disease characterized by structural damage and pain. During the last decade, it became clear that synovial inflammation is present in a significant number of patients with knee OA^{1,2,3}. In several studies,

synovial inflammation has been associated with pain^{4,5,6} and radiographic progression^{7,8,9} of the disease, indicating it as an important player in disease pathogenesis.

Signal alterations on (contrast-enhanced) magnetic

From the Department of Rheumatology, Leiden University Medical Centre; Department of Radiology, Department of Orthopedics, and Department of Clinical Epidemiology, Leiden University Medical Center; TNO, Leiden; Department of Orthopedics and Otorhinolaryngology, Erasmus MC, University Medical Center, Rotterdam, the Netherlands; The Janssen Pharmaceutical Companies of Johnson & Johnson, Spring House, Pennsylvania, USA.

Work performed within the framework of Dutch Top Institute Pharma, project “Generation of models, mechanisms and markers for stratification of osteoarthritis patients” (project no. T1-213). Also financially supported by The Dutch Arthritis Association, the European Union 6th Framework Programme (FP6) Autocure, FP7 program Masterswitch, a grant from Centre for Medical Systems Biology within the framework of the Netherlands Genomics Initiative, and The Netherlands Organization of Health Research and Development.

I.R. Klein-Wieringa, MD, PhD, Department of Rheumatology, Leiden University Medical Centre; B.J. de Lange-Brokaar*, MD, PhD, Department of Rheumatology, Leiden University Medical Centre; E. Yusuf, MD, PhD, Department of Rheumatology, Leiden University Medical*

*Centre; S.N. Andersen, Ing, Department of Rheumatology, Leiden University Medical Centre; J.C. Kwekkeboom, Ing, Department of Rheumatology, Leiden University Medical Centre; H.M. Kroon, PhD, Department of Radiology, Leiden University Medical Centre; G.J. van Osch, PhD, Professor, Department of Orthopedics and Otorhinolaryngology, Erasmus MC, University Medical Center; A.M. Zuurmond, PhD, TNO; V. Stojanovic-Susulic, PhD, Janssen Pharmaceutical Companies of Johnson & Johnson; R.G. Nelissen, MD, PhD, Professor, Department of Orthopedics, Leiden University Medical Centre; R.E. Toes, PhD, Professor, Department of Rheumatology, Leiden University Medical Centre; M. Kloppenburg, MD, PhD, Professor, Department of Rheumatology, and Department of Clinical Epidemiology, Leiden University Medical Centre; A. Ioan-Facsinay, PhD, Assistant Professor, Department of Rheumatology, Leiden University Medical Centre. *Both authors contributed equally to the manuscript.*

*Address correspondence to Dr. A. Ioan-Facsinay, Department of Rheumatology, Leiden University Medical Centre, C1-38, Postbus 9600, 2300 RC Leiden, the Netherlands. E-mail: a.ioan@lumc.nl
Accepted for publication January 18, 2016.*

Personal non-commercial use only. The Journal of Rheumatology Copyright © 2016. All rights reserved.

resonance imaging are used as a surrogate biomarker for inflammation. Signal alterations have been reported both at the synovial and the infrapatellar fat pad (IFP) level, in addition to effusion, and both have been reported to be associated with radiographic damage^{10,11} and pain^{4,5,6,12}. However, it is still unclear how these signal alterations relate to histological changes and cellular infiltrate in these 2 tissues, and whether inflammatory changes in the synovium and IFP are related. Moreover, the relative contribution of these 2 tissues to clinical variables such as radiographic damage and pain in OA remains to be established.

The inflamed synovium of patients with OA is infiltrated with immune cells, which can secrete various inflammatory mediators (review¹³) that could underlie the association between inflammation and pain/structural damage. Some studies indicate that cells in the OA synovium could be in an activated state based on surface marker expression (such as CD25 or CD69 for T cells) or the presence of soluble mediators known to be secreted by activated macrophages [i.e., cytokines such as interleukin (IL)-6, tumor necrosis factor- α (TNF- α), etc.] or mast cells (i.e., histamine). However, the limited number of studies as well as the small number of samples used that support the findings suggest that followup studies are necessary to fully characterize the activation state of immune cells in the synovium. Moreover, the relationship between the (phenotype of) immune cells in the synovium and the clinical disease characteristics has not yet been fully investigated.

Another source of immune cells and inflammatory mediators in the joint is the IFP^{14,15,16}. Because the IFP is situated adjacent to the synovium, it is conceivable that crosstalk exists between these tissues and that the IFP could contribute directly or indirectly to disease pathogenesis.

To get a better insight into inflammatory pathways operational in the OA joint, we determined the abundance and phenotype of the main immune cell populations in the synovium and compared these with the IFP. Further, we identified the association of different immune cell populations with pain in a hypotheses-generating setting using a well-defined cohort of patients with knee OA.

MATERIALS AND METHODS

Patients and study design. Patients with OA (n = 76) undergoing joint replacement surgery were recruited into our study, and synovial (n = 40) and IFP samples (n = 68) were obtained and immediately processed. In total, 39 paired samples were obtained.

Forty-two of the patients included in our present study were part of the observational geMstoan study (GEneration of Models, Mechanism & Markers for STRatification of OsteoArthritis patieNts) of patients with knee OA that aimed to find new biomarkers for OA progression. The geMstoan patients were included between 2008 and 2013, had symptomatic radiographic primary knee OA following the American College of Rheumatology criteria¹⁷, and attended the Orthopedic Department of the Leiden University Medical Center (LUMC) or the Orthopedic Department of the Diaconessenhuis in Leiden. In our study, patients with other rheumatic diseases treated with immunosuppressive drugs or receiving knee injections

(corticosteroids, etc.) in the past 3 months were excluded. Written informed consent was available from all geMstoan patients.

From 34 patients, leftover synovial tissues and IFP samples were obtained during total knee arthroplasty, thus no additional clinical data were available besides diagnosis, age, sex, and body mass index (BMI). Both studies were approved by the ethics committee of the LUMC.

Isolation of synovial cells and the IFP-derived stromal vascular fraction (SVF). Synovial tissue was cut and subsequently digested with collagenase type II (Sigma) for 90 min at 37°C under continuous rolling. The digested tissue was filtered through a cell strainer with a pore size of 70 μ m.

Isolation of SVF cells from the IFP was performed as previously described¹⁴. Briefly, tissue fragments were incubated with 1.8 mg/ml collagenase type 1A (Sigma-Aldrich) in RPMI 1640 (Gibco) for 1 h at 37°C under continuous rolling. The digested tissue was filtered through a nylon mesh with a pore size of 250 μ m, and the remaining tissue was mashed and washed through a 70- μ m nylon mesh. The cells suspension was centrifuged and the supernatant containing floating adipocytes was removed. The SVF cells were washed 3 times in warm DMEM 4.5 g/l glucose/F12/0.5% bovine serum albumin/15 mM HEPES/glutamax/pen/strep (Gibco; medium). Erythrocytes were lysed by adding lysis buffer (0.154 mmol/l NH₄Cl, 5.7 mmol/l K₂HPO₄, and 0.1 mmol/l EDTA pH 7.3) for 5 min at room temperature.

Both the cells isolated from the synovium and the SVF fraction were further stained with the appropriate antibodies.

Flow cytometric analysis. For surface staining, 100,000 synovial or SVF cells were stained with mixes of the following antibodies: phycoerythrin (PE)-conjugated CD3; fluorescein isothiocyanate (FITC)-conjugated CD45, CD8, and CD45RA; Pacific Blue (PB)-conjugated CD4; allophycocyanin (APC)-conjugated CD117 and CD8; and PE-CY-7-conjugated CD14 and CD25 (all antibodies were from BD Biosciences). All incubations were performed at 4°C for 30 min.

For intracellular cytokine staining, synovial or SVF cells were plated overnight in medium containing 50 IU/ml IL-2 in the presence or absence of 3 μ g/ml brefeldin A (to block secretion of proteins). The next day, cells cultured in the absence of brefeldin A were activated with 20 ng/ml phorbol myristate acetate (PMA) and 200 ng/ml ionomycin for 5 h, and 10 μ g/ml brefeldin A was added in the last 4 h of culture. Cells cultured in the presence of brefeldin A were stained directly the next day. About 400,000 synovial or SVF cells were stained using the BD intracellular cytokine fixation/permeabilization solution kit (BD Biosciences) according to the manufacturer's instructions. The following antibodies were used: Alexa Fluor 700-conjugated CD3; PB-conjugated CD4; APC-conjugated CD8; FITC-conjugated CD45RA; PE-CY-7-conjugated CD14 and IL-4; and PE-conjugated interferon- γ (IFN- γ), TNF- α , IL-10, and IL-6 (all from BD Biosciences). Cells were fixed with 1% paraformaldehyde and analyzed with an LSR II flow cytometer using Diva 6 software (BD Biosciences). Dead cells were excluded based on both forward scatter (FSC)/side scatter (SSC) and staining with the dead cell discrimination kit (Miltenyi Biotec), as indicated. Single cells were selected based on FSC/SSC analyses, as described in the gating strategy (Supplementary Figure 1 is available from the authors on request).

Clinical data. In the geMstoan patients, demographics and disease characteristics were collected through standard questionnaires. Measurement of pain in the affected knee was performed preoperatively using a general assessment of self-reported pain by the visual analog scale (VAS; 0–100), a 1-dimensional measure of pain intensity in which a score of 100 mm represents worst possible pain.

Statistics. Paired Wilcoxon signed-rank test was used to compare percentages of immune cells between tissues. Association between percentage of immune cells and VAS pain was determined by linear regression analyses, and was adjusted for age and sex when necessary. Correlations were determined by the Spearman rank test. A correlation < 0.3 was considered weak, 0.3–0.7 moderate, and > 0.7 strong. A p value < 0.05 was considered significant. The Statistical Package for the Social Sciences version 20.0 (SPSS) was used for analyses.

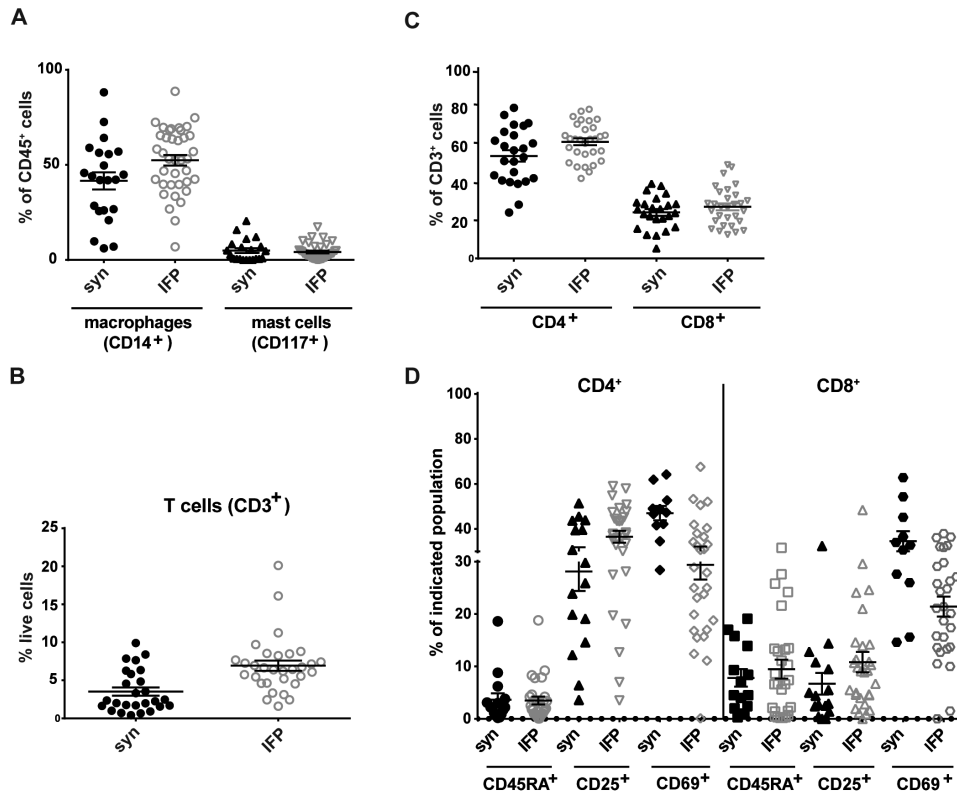


Figure 1. Immune cell characterization of the synovium (closed black symbols) and the stromal vascular fraction of the IFP (open symbols) of all patients with endstage OA (n = 76) by flow cytometry. Gating strategies were performed as described in Supplementary Figure 1 (available from the authors on request). Percentages of (A) macrophages (CD45+CD14+) and mast cells (CD45+CD117+), and (B) T cells (CD3+) are depicted. Percentages of (C) CD4+ and CD8+ T cells, and (D) CD45RA, CD25, and CD69 expressions within the CD4+ and CD8+ T cell populations are indicated. Mean percentage positive cells \pm SEM are depicted. Each dot represents 1 patient. syn: synovium; IFP: infrapatellar fat pad; OA: osteoarthritis; SEM: standard error of the mean.

RESULTS

Immune cell populations in the synovium and the IFP. First, we characterized the immune cell population in the synovium in detail. Because of the limited amount of tissue, not all experiments could be performed with each tissue sample. Therefore, variable numbers of samples were included in different experiments.

Flow cytometric analysis of the synovial cells revealed a heterogeneous forward/side scatter (FSC/SSC), indicating the presence of several cell types (Supplementary Figure 1 is available from the authors on request). To determine the abundance of various cell types, we used specific cell-surface markers and CD45 to identify hematopoietic cells. Macrophages (CD14+), T cells (CD3+), and mast cells (CD117+) were readily detectable (Figure 1A–C), while B cells (CD19+ cells) were virtually absent (< 1%; data not shown). Further phenotypic characterization of CD4+ and CD8+ T cells revealed that these populations consisted mainly of memory cells (do not express CD45RA; Figure 1D). Interestingly, a substantial percentage of both CD4+ (T helper cells) and CD8+ (cytotoxic T cells) T cells had an activated phenotype and expressed CD25 and CD69 (Figure

1D). Similar data were obtained when the SVF cells from the IFP were analyzed (Figure 1A–D).

To detect possible tissue-specific effects and to directly compare the prevalence of different cell populations in the synovium and IFP, we have selected and compared paired synovium-IFP samples (Figure 2). We found no differences in the percentages of T cells (Figure 2A), macrophages (Figure 2B), mast cells (Figure 2C), memory T cells, or T cells bearing the late activation marker CD25 (data not shown) between tissues. However, percentages of T cells positive for the early activation marker CD69 were significantly higher in synovium-derived CD4+ T cells compared with IFP-derived T cells (Figure 2D). This difference was likely not due to differences in the collagenase treatment between the synovium and IFP because the treatment of peripheral blood mononuclear cells for 1 h or 1.5 h using collagenase type IA or type II did not induce CD69 expression on CD4+ T cells (data not shown).

T cell and macrophage cytokine production. Because macrophages and T cells are the most abundant immune cell types present in the synovium, we further characterized these cells. To assess their possible contribution to inflammatory

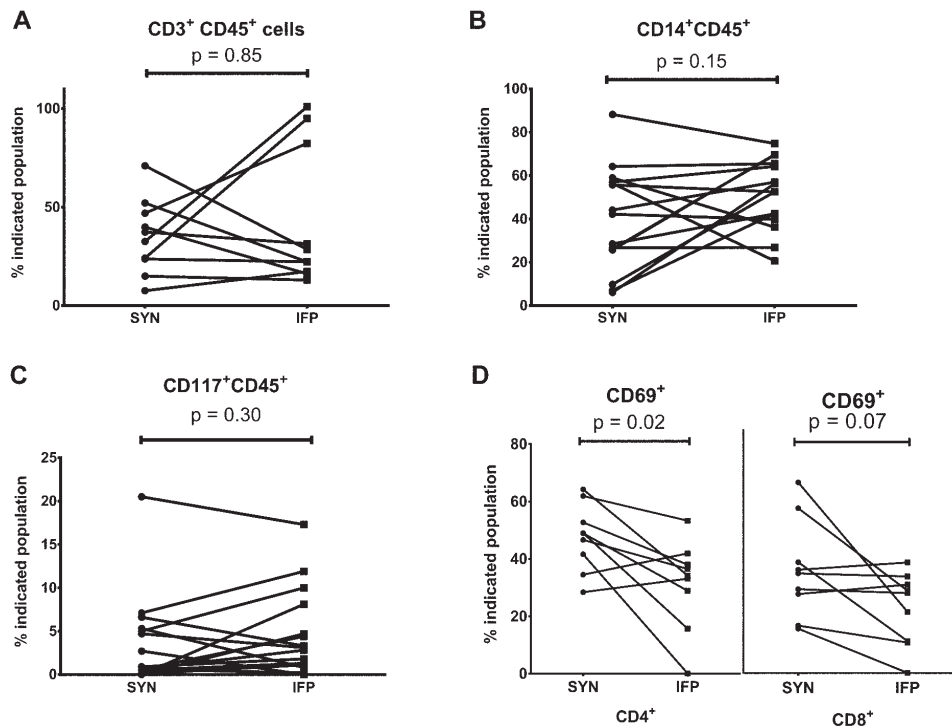


Figure 2. Paired syn-IFP samples analysis of different cells population for patients with endstage knee OA. Paired analysis of (A) T cells (percent of CD3+ T cells of CD45+ cells, n = 10), (B) macrophages (CD14+CD45+, n = 15), and (C) mast cells (CD117+CD45+, n = 15) are depicted. Further, (D) percentages of T cells (CD4+ and CD8+ T cells) positive for the early activation marker CD69 are shown (n = 9). Differences between groups were assessed using the paired Wilcoxon signed-rank test. syn: synovium; IFP: infrapatellar fat pad; OA: osteoarthritis.

mediators, we investigated the polarization state of these cells by studying their cytokine secretion. Cytokines typically associated with different polarization states were investigated. Gating strategies are described in Supplementary Figure 1B (available from the authors on request). Synovial macrophages secreted IL-6 and TNF- α , but also some IL-10 *ex vivo*, in the absence of extra stimulation (Figure 3A). Intracellular cytokine staining showed that both the CD4+ and CD8+ T cell subsets produced mainly IL-6 and IL-4 (Figure 3C) in the absence of extra stimulation. Upon *in vitro* stimulation using PMA in combination with ionomycin (PMA/ionomycin), these cells were able to produce IFN- γ , TNF- α , IL-6, IL-4, and very little, if any, IL-10 (Figure 3E). Comparable results were obtained for macrophages and T cells from the IFP (Figure 3B, 3D, and 3F).

Association of immune cells with clinical characteristics. To get first insight into the possible contribution of immune cells to clinical characteristics of OA such as pain, we next investigated whether the synovial immune cell populations were associated with self-reported knee pain. For this, we made use of the clinically well-characterized population of patients participating in the geMstoan study (n = 42). No significant differences in the immune cell populations or clinical characteristics were observed between the geMstoan and non-geMstoan samples (data not shown). Patient characteristics are shown in Table 1. The median level of VAS pain

was 68 and ranged from 32 to 95. The percentage of CD4+ T cells in the synovium was associated with VAS pain, after adjustment for age and sex (Table 2, Figure 4A). No such association was found for other immune cells (Table 2). Moreover, no association was found for IFP-derived T cells with pain (Figure 4B), nor for other IFP-derived cells (Table 2). Because this part of our study was meant as hypotheses-generating, we did not adjust for multiple testing.

Interestingly, both VAS pain ($r = 0.34$, $p = 0.04$) and CD4+ T cells in the synovium correlated significantly with the BMI ($r = 0.45$, $p = 0.03$) in our cohort. Therefore, we next investigated whether the association of CD4+ T cells with pain is, in statistical terms, mediated by the BMI. These analyses revealed that the association of CD4+ T cells with VAS pain was independent of the BMI (adjusted β 0.55, 95% CI 0.02–1.08).

In an attempt to get more insight into the mechanisms underlying this association, we investigated the relationship between different T cell characteristics and pain. Although the association between different cytokine-producing T cells and pain could not be studied because of the limited availability of cytokine data in the geMstoan population, we did investigate whether phenotypically distinct CD4+ populations correlated with pain. No correlations could be found between CD4+ T cells expressing CD45RA+, CD25+, or CD69+ with VAS in the synovium or the IFP (data not shown).

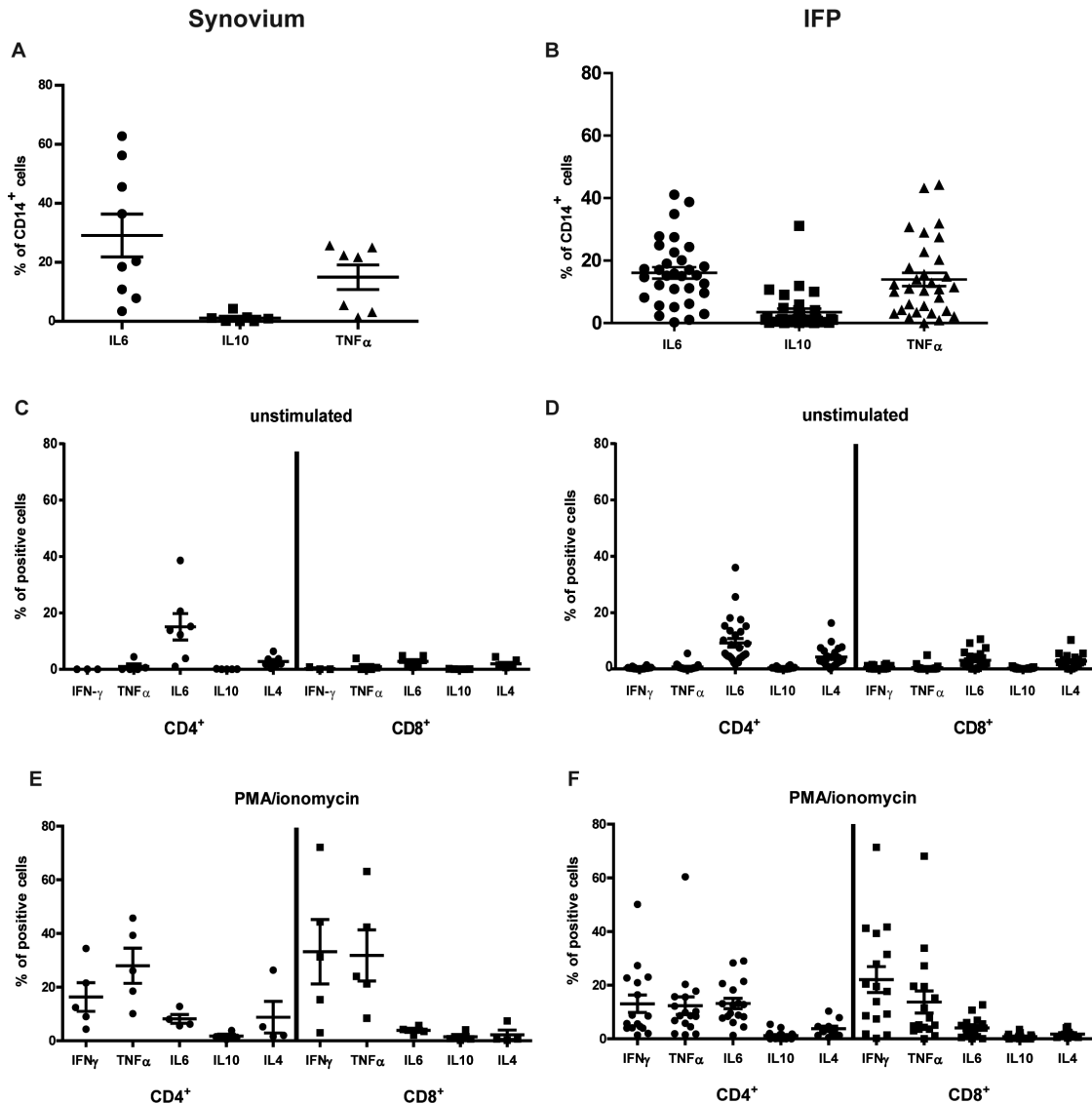


Figure 3. Macrophage and T cell cytokine production in the synovium (A, C, E) and the stromal vascular fraction of the IFP (B, D, F). Gating strategies were performed as described in Supplementary Figure 1 (available from the authors on request). Spontaneous cytokine production by CD14⁺ macrophages in (A) the synovium or (B) the IFP is depicted. Likewise, spontaneous (C, D) or PMA/ionomycin-induced cytokine production (E, F) of CD4⁺ and CD8⁺ T cells are depicted. Indicated are mean percentage cytokine positive cells \pm SEM. Each dot represents 1 patient. IFP: infrapatellar fat pad; PMA: phorbol myristate acetate; SEM: standard error of the mean; IL: interleukin; TNF α : tumor necrosis factor- α ; IFN- γ : interferon- γ .

DISCUSSION

We investigated the immune cell populations present in the synovium and the IFP of patients with OA. Our data indicate similarities both in the composition and the phenotype of different immune cell populations in these tissues. Moreover, our exploratory studies investigating the association of different cell types with radiographic damage and pain suggest that synovial CD4⁺ T cells might be related to pain perception in patients with endstage knee OA.

Macrophages and T cells are the most predominant immune cell types present in the synovial tissue and IFP of

patients with OA, which is in line with earlier observations^{13,14}. To our knowledge, a direct comparison between the synovial cells and the IFP has never been performed before. We found that the immune cell composition of these tissues was very similar, with no significant differences in the cell type present and in the abundance of different cell populations. However, in a previously reported study¹⁴, we described differences in T cells and mast cells between paired IFP-subcutaneous adipose tissue samples from patients with OA¹⁴. Together, these data suggest that infiltration of immune cells into tissues might be more affected by the disease

Table 1. geMstoan study patient characteristics (n = 42). Values are mean (SD) unless otherwise specified.

Characteristics	Values
Age, yrs	63.3 (8.4)
Female, n (%)	22.0 (52.4)
BMI, kg/m ² , median (IQR)	28.9 (25.7–31.6)
Fat, %	36.0 (11.4)
VAS pain, mm, 0–100	65.2 (16.1)
Kellgren-Lawrence score, median (IQR)	4 (3–4)

geMstoan: GEneration of Models, Mechanism & Markers for STRatification of OsteoArthritis patieNts; BMI: body mass index; IQR: interquartile range; VAS: visual analog scale for pain.

Table 2. Association of various immune cells in synovium and IFP with knee pain, assessed by the visual analog scale in 42 patients with endstage knee OA.

Variables	No. Patients	Standardized β (95% CI)	Adjusted Standardized β (95% CI)*
Synovium			
CD4+ T cells	22	0.60 (0.25–1.06)**	0.51 (0.09–1.02)**
CD8+ T cells	22	0.02 (–0.83 to 0.89)	0.21 (–0.50 to 1.29)
Macrophages	14	–0.34 (–0.68 to 0.19)	–0.35 (–0.60 to 0.08)
Mast cells	13	0.17 (–0.93 to 1.58)	–0.25 (–1.71 to 0.74)
IFP			
CD4+ T cells	24	0.19 (–0.41 to 1.05)	–0.07 (–0.80 to 0.56)
CD8+ T cells	24	–0.21 (–1.01 to 0.35)	0.11 (–0.53 to 0.86)
Macrophages	20	0.36 (–0.10 to 0.86)	0.07 (–0.38 to 0.52)
Mast cells	18	0.20 (–1.21 to 2.77)	–0.13 (–1.89 to 1.79)

* Adjusted for age and sex. ** P value < 0.05. IFP: infrapatellar fat pad; OA: osteoarthritis.

process (i.e., knee OA) than by tissue-specific signals. Moreover, these data support the findings^{16,18} that suggest the existence of crosstalk between synovial tissue and IFP, ultimately leading to a common inflammatory state. The involvement of the IFP in the development of OA requires further elucidation; however, the data reported here are intriguing in view of the existing contradictory literature related to the IFP contribution to the pathophysiology of OA, in which some authors suggested an antiinflammatory/beneficial function of IFP based on the inverse associations of the IFP maximal area with pain or structural damage^{19,20}, while others identified it as a source of proinflammatory mediators with potential harmful effects in the joint (review²¹).

Our analyses further indicate that both tissues are an important source of inflammatory mediators and therefore could be involved in the pathophysiology of OA. Indeed, both macrophages and T cells could produce cytokines directly *ex vivo*, which suggests that they are in an activated state in the tissues. Moreover, they secreted predominantly proinflammatory and little or no antiinflammatory cytokines, an action in agreement with the diseased state and with our

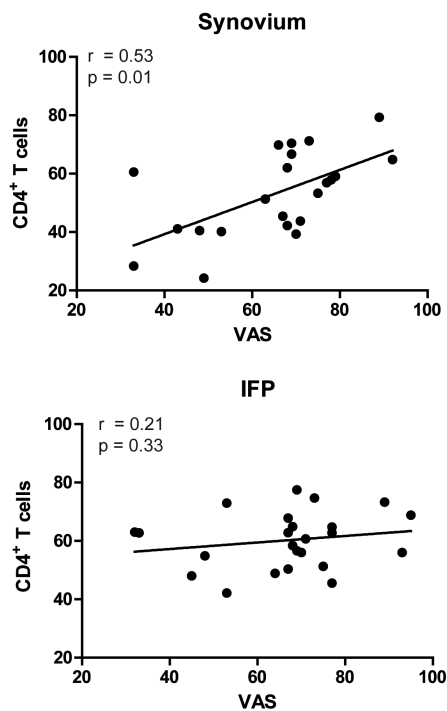


Figure 4. Spearman rank correlations between the synovial and IFP-derived CD4+ T cells and VAS. A p value \leq 0.05 was considered significant. IFP: infrapatellar fat pad; VAS: visual analog scale.

earlier finding that H&E staining of these tissue samples revealed the presence of at least 1 feature of synovitis (i.e., lining cell layer thickening, stromal activation, presence of cellular infiltrate) in each patient. This was in contrast with the synovial samples from patients with OA undergoing arthroscopy, in which several samples had no detectable signs of inflammation¹¹.

Previous studies focused on the synovium (review¹³) indicate that CD4+ T cells have an activated phenotype, as indicated by the expression of CD25^{22,23,24} or CD69^{23,25,26}. Our study indicates that these markers are expressed by T cells in both tissues. Interestingly, percentages of T cells positive for the early activation marker CD69 were significantly lower in IFP-derived compared with synovium-derived CD4+ T cells, indicating that T cells in the synovial tissue might be more frequently activated than in the IFP. In addition, T cells secreted cytokines *ex vivo* in the absence of extra stimulation. Because it is believed that T cells stop secreting cytokines when their cognate antigens are removed, and because the expression of CD69 is transient and relatively short-lived, it is conceivable that CD69/cytokine-secreting T cells represent recently activated cells that recognize antigens locally in the tissues from which they originate. This would be in line with previous data in which a lower expression of CD3 ζ chain was observed on synovial T cells, indicative of chronic activation²⁷. Although it is unclear whether T cells are locally activated and expanded or recruited to the tissue in an activated state, some data in

mice indicate that CD4+ T cells could be involved in OA²⁸. This hypothesis remains to be further investigated.

We observed a BMI-dependent infiltration of CD4+ T cells in the synovium ($r = 0.45$, $p = 0.03$), revealing an associative link between obesity and synovial inflammation, to our knowledge for the first time. Whether adipose tissue secreted factors or other obesity-related changes underlie this association needs to be established.

Previous studies have indicated the presence of Th1 cells in synovial tissue. However, IFN- γ , the typical Th1 cytokine, proved difficult to detect by immunohistochemistry^{29,30} (review¹³), which might indicate that the Th1 cells present in this tissue are not in an activated state. Indeed, our data support this hypothesis because we could clearly identify IFN- γ -secreting Th1 cells upon *ex vivo* activation, but not in the absence of activation. In contrast, we could identify T cells secreting IL-6, a proinflammatory cytokine previously associated with OA³¹ and usually associated with innate immune responses, both in the synovium and IFP. Current studies are investigating the phenotype and functional relevance of this population of T cells.

We have also described an intriguing finding involving the association of pain perception with inflammatory cell infiltration in the OA synovial tissue. Although the number of available samples allows only for a hypotheses-generating study regarding the association of various infiltrating cell types with pain, we believe that the described association of synovial CD4+ T cells with pain is of interest and plausible in view of the literature. Several studies have implicated a potential involvement for T cells in nociception, although the exact mechanisms of their contribution to pain perception are not yet understood. T cells have been shown to infiltrate the site of nerve injury, and the elimination of T cells in nude rats attenuated hyperalgesia and allodynia in a model of neuropathic pain³². In addition, this effect appeared to be facilitated by Th1 cells through the release of IL-2 and IFN- γ ³², cytokines that were also secreted by synovial CD4+ T cells in our study. This indicates a possible mechanism by which synovial T cells could be associated with pain in OA. Moreover, in our study, synovial CD4+ T cells also secreted TNF- α and IL-6. Interestingly, these cytokines have also been shown to directly affect sensory fiber function^{33,34,35,36}, further supporting the hypothesis that CD4+ T cells could be associated with pain. Therefore, future studies replicating our preliminary findings are certainly of great interest.

A limitation of our study was the preferential inclusion of patients who underwent arthroplasty as the only possible source of IFP and of sufficient synovial tissue for exhaustive analyses. Therefore, all patients included in our present study had synovial inflammation and experienced pain in the presence of advanced radiographic knee OA, which could bias our data. Although no patients free of pain were included, the variation in the VAS scores (32–95) was sufficient to enable us to study associations between immune cells

and pain. Other limitations include the lack of control subjects, either early OA or healthy individuals, because of technical or ethical difficulties, and the low number of samples available for cytokine analysis, precluding the study of the association between cytokines and certain subpopulations of immune cells (such as pro- and antiinflammatory macrophages) and pain measures.

Our study indicates that the inflammatory cell composition and phenotype is similar between the synovium and the IFP of patients with OA, and that part of the infiltrating cells have an activated phenotype and secrete proinflammatory cytokines. Moreover, while our data await replication, our study indicates that synovial CD4+ T cells could contribute to the perception of knee pain in patients with endstage knee OA, offering a cellular basis for the association between synovial inflammation and knee pain in patients with OA.

ACKNOWLEDGMENT

The authors acknowledge the support of the cooperating hospital Diaconessenhuis, Leiden, the Netherlands, and its orthopedic surgeons and nurse practitioners.

REFERENCES

1. D'Agostino MA, Conaghan P, Le Bars M, Baron G, Grassi W, Martin-Mola E, et al. EULAR report on the use of ultrasonography in painful knee osteoarthritis. Part 1: prevalence of inflammation in osteoarthritis. *Ann Rheum Dis* 2005;64:1703-9.
2. de Lange-Brokaar BJ, Ioan-Facsinay A, Yusuf E, Visser AW, Kroon HM, Van Osch GJ, et al. Association of pain in knee osteoarthritis with distinct patterns of synovitis. *Arthritis Rheumatol* 2015; 67:733-40.
3. Roemer FW, Kassim Javaid M, Guermazi A, Thomas M, Kiran A, Keen R, et al. Anatomical distribution of synovitis in knee osteoarthritis and its association with joint effusion assessed on non-enhanced and contrast-enhanced MRI. *Osteoarthritis Cartilage* 2010;18:1269-74.
4. Kornaat PR, Bloem JL, Ceulemans RY, Riyazi N, Rosendaal FR, Nelissen RG, et al. Osteoarthritis of the knee: association between clinical features and MR imaging findings. *Radiology* 2006;239:811-7.
5. Yusuf E, Kortekaas MC, Watt I, Huizinga TW, Kloppenburg M. Do knee abnormalities visualised on MRI explain knee pain in knee osteoarthritis? A systematic review. *Ann Rheum Dis* 2011;70:60-7.
6. Baker K, Grainger A, Niu J, Clancy M, Guermazi A, Crema M, et al. Relation of synovitis to knee pain using contrast-enhanced MRIs. *Ann Rheum Dis* 2010;69:1779-83.
7. Roemer FW, Guermazi A, Felson DT, Niu J, Nevitt MC, Crema MD, et al. Presence of MRI-detected joint effusion and synovitis increases the risk of cartilage loss in knees without osteoarthritis at 30-month follow-up: the MOST study. *Ann Rheum Dis* 2011;70:1804-9.
8. Roemer FW, Zhang Y, Niu J, Lynch JA, Crema MD, Marra MD, et al. Tibiofemoral joint osteoarthritis: risk factors for MR-depicted fast cartilage loss over a 30-month period in the multicenter osteoarthritis study. *Radiology* 2009;252:772-80.
9. Atukorala I, Kwok CK, Guermazi A, Roemer FW, Boudreau RM, Hannon MJ, et al. Synovitis in knee osteoarthritis: a precursor of disease? *Ann Rheum Dis* 2014 Dec 8 (E-pub ahead of print).
10. Roemer FW, Guermazi A, Zhang Y, Yang M, Hunter DJ, Crema MD, et al. Hoffa's Fat Pad: evaluation on unenhanced MR images

- as a measure of patellofemoral synovitis in osteoarthritis. *AJR Am J Roentgenol* 2009;192:1696-700.
11. de Lange-Brokaar BJ, Ioan-Facsinay A, Yusuf E, Visser AW, Kroon HM, Andersen SN, et al. Degree of synovitis on MRI by comprehensive whole knee semi-quantitative scoring method correlates with histologic and macroscopic features of synovial tissue inflammation in knee osteoarthritis. *Osteoarthritis Cartilage* 2014;22:1606-13.
 12. Hill CL, Hunter DJ, Niu J, Clancy M, Guermazi A, Genant H, et al. Synovitis detected on magnetic resonance imaging and its relation to pain and cartilage loss in knee osteoarthritis. *Ann Rheum Dis* 2007;66:1599-603.
 13. de Lange-Brokaar BJ, Ioan-Facsinay A, van Osch GJ, Zuurmond AM, Schoones J, Toes RE, et al. Synovial inflammation, immune cells and their cytokines in osteoarthritis: a review. *Osteoarthritis Cartilage* 2012;20:1484-99.
 14. Klein-Wieringa IR, Kloppenburg M, Bastiaansen-Jenniskens YM, Yusuf E, Kwekkeboom JC, El-Bannoudi H, et al. The infrapatellar fat pad of patients with osteoarthritis has an inflammatory phenotype. *Ann Rheum Dis* 2011;70:851-7.
 15. Bastiaansen-Jenniskens YM, Clockaerts S, Feijt C, Zuurmond AM, Stojanovic-Susulic V, Bridts C, et al. Infrapatellar fat pad of patients with end-stage osteoarthritis inhibits catabolic mediators in cartilage. *Ann Rheum Dis* 2012;71:288-94.
 16. Ushiyama T, Chano T, Inoue K, Matsusue Y. Cytokine production in the infrapatellar fat pad: another source of cytokines in knee synovial fluids. *Ann Rheum Dis* 2003;62:108-12.
 17. Altman R, Alarcon G, Appelrouth D, Bloch D, Borenstein D, Brandt K, et al. The American College of Rheumatology criteria for the classification and reporting of osteoarthritis of the hand. *Arthritis Rheum* 1990;33:1601-10.
 18. Clockaerts S, Bastiaansen-Jenniskens YM, Feijt C, De Clerck L, Verhaar JA, Zuurmond AM, et al. Cytokine production by infrapatellar fat pad can be stimulated by interleukin 1 β and inhibited by peroxisome proliferator activated receptor α agonist. *Ann Rheum Dis* 2012;71:1012-8.
 19. Pan F, Han W, Wang X, Liu Z, Jin X, Antony B, et al. A longitudinal study of the association between infrapatellar fat pad maximal area and changes in knee symptoms and structure in older adults. *Ann Rheum Dis* 2015;74:1808-24.
 20. Han W, Cai S, Liu Z, Jin X, Wang X, Antony B, et al. Infrapatellar fat pad in the knee: is local fat good or bad for knee osteoarthritis? *Arthritis Res Ther* 2014;16:R145.
 21. Ioan-Facsinay A, Kloppenburg M. An emerging player in knee osteoarthritis: the infrapatellar fat pad. *Arthritis Res Ther* 2013;15:225.
 22. Saito I, Koshino T, Nakashima K, Uesugi M, Saito T. Increased cellular infiltrate in inflammatory synovia of osteoarthritic knees. *Osteoarthritis Cartilage* 2002;10:156-62.
 23. Sakkas LI, Scanzello C, Johanson N, Burkholder J, Mitra A, Salgame P, et al. T cells and T-cell cytokine transcripts in the synovial membrane in patients with osteoarthritis. *Clin Diagn Lab Immunol* 1998;5:430-7.
 24. Smith MD, O'Donnell J, Highton J, Palmer DG, Rozenbils M, Roberts-Thomson PJ. Immunohistochemical analysis of synovial membranes from inflammatory and non-inflammatory arthritides: scarcity of CD5 positive B cells and IL2 receptor bearing T cells. *Pathology* 1992;24:19-26.
 25. Rollín R, Marco F, Jover JA, García-Asenjo JA, Rodríguez L, López-Durán L, et al. Early lymphocyte activation in the synovial microenvironment in patients with osteoarthritis: comparison with rheumatoid arthritis patients and healthy controls. *Rheumatol Int* 2008;28:757-64.
 26. Yamada H, Nakashima Y, Okazaki K, Mawatari T, Fukushi J, Oyamada A, et al. Preferential accumulation of activated Th1 cells not only in rheumatoid arthritis but also in osteoarthritis joints. *J Rheumatol* 2011;38:1569-75.
 27. Sakkas LI, Koussidis G, Avgerinos E, Gaughan J, Platsoucas CD. Decreased expression of the CD3zeta chain in T cells infiltrating the synovial membrane of patients with osteoarthritis. *Clin Diagn Lab Immunol* 2004;11:195-202.
 28. Shen PC, Wu CL, Jou IM, Lee CH, Juan HY, Lee PJ, et al. T helper cells promote disease progression of osteoarthritis by inducing macrophage inflammatory protein-1 γ . *Osteoarthritis Cartilage* 2011;19:728-36.
 29. Fonseca JE, Edwards JC, Blades S, Goulding NJ. Macrophage subpopulations in rheumatoid synovium: reduced CD163 expression in CD4+ T lymphocyte-rich microenvironments. *Arthritis Rheum* 2002;46:1210-6.
 30. Steiner G, Tohidast-Akrad M, Witzmann G, Vesely M, Studnicka-Benke A, Gal A, et al. Cytokine production by synovial T cells in rheumatoid arthritis. *Rheumatology* 1999;38:202-13.
 31. Stannus O, Jones G, Cicuttini F, Parameswaran V, Quinn S, Burgess J, et al. Circulating levels of IL-6 and TNF- α are associated with knee radiographic osteoarthritis and knee cartilage loss in older adults. *Osteoarthritis Cartilage* 2010;18:1441-7.
 32. Moalem G, Xu K, Yu L. T lymphocytes play a role in neuropathic pain following peripheral nerve injury in rats. *Neuroscience* 2004;129:767-77.
 33. Ren K, Dubner R. Interactions between the immune and nervous systems in pain. *Nat Med* 2010;16:1267-76.
 34. Marchand F, Perretti M, McMahon SB. Role of the immune system in chronic pain. *Nat Rev Neurosci* 2005;6:521-32.
 35. Richter F, Natura G, Loser S, Schmidt K, Viisanen H, Schaible HG. Tumor necrosis factor causes persistent sensitization of joint nociceptors to mechanical stimuli in rats. *Arthritis Rheum* 2010;62:3806-14.
 36. von Banchet GS, Richter J, Hüchel M, Rose C, Bräuer R, Schaible HG. Fibroblast-like synovial cells from normal and inflamed knee joints differently affect the expression of pain-related receptors in sensory neurones: a co-culture study. *Arthritis Res Ther* 2007;9:R6.