

Cross-sectional and Longitudinal Associations between Knee Joint Effusion Synovitis and Knee Pain in Older Adults

Xia Wang, Xingzhong Jin, Weiyu Han, Yuelong Cao, Andrew Halliday, Leigh Blizzard, Faming Pan, Benny Antony, Flavia Cicuttini, Graeme Jones, and Changhai Ding

ABSTRACT. Objective. To describe the cross-sectional and longitudinal associations between knee regional effusion synovitis and knee pain in older adults.

Methods. Data from a population-based random sample (n = 880, mean age 62 yrs, 50% women) were used. Baseline knee joint effusion synovitis was graded (0–3) using T2-weighted magnetic resonance imaging (MRI) in the suprapatellar pouch, central portion, posterior femoral recess, and subpopliteal recess. Effusion synovitis of the whole joint was defined as a score of ≥ 2 in any subregion. Other knee structural (including cartilage, bone marrow, and menisci) lesions were assessed by MRI at baseline. Knee pain was assessed by the Western Ontario and McMaster Universities Osteoarthritis Index questionnaire at baseline and 2.6 years later. Multivariable analyses were performed after adjustment for age, sex, body mass index, and other structural lesions.

Results. The prevalence of effusion synovitis was 67%. Suprapatellar pouch effusion synovitis was significantly and independently associated with increased total and nonweight-bearing knee pain in both cross-sectional and longitudinal analyses (for an increase in total knee pain of ≥ 5 , RR 1.26 per grade, 95% CI 1.04–1.52), and increased weight-bearing knee pain in longitudinal analysis only. Effusion synovitis in posterior femoral recess and central portion were independently associated with increases in nonweight-bearing pain (RR 1.63 per grade, 95% CI 1.32–2.01 and RR 1.29 per grade, 95% CI 1.01–1.65, respectively) in longitudinal analyses only.

Conclusion. Knee joint effusion synovitis has independent associations with knee pain in older adults. Suprapatellar pouch effusion synovitis is associated with nonweight-bearing and weight-bearing knee pain, while posterior femoral recess and central portion effusion synovitis are only associated with nonweight-bearing pain. (J Rheumatol First Release November 15 2015; doi:10.3899/jrheum.150355)

Key Indexing Terms:

OSTEOARTHRITIS

EFFUSION

SYNOVITIS

KNEE PAIN

Knee pain is one of the most prominent and disabling symptoms of knee osteoarthritis (OA) among older adults. Knee pain is multifactorial, and its risk factors may include body mass index (BMI)¹ and knee structural abnormalities such as cartilage defects and bone marrow lesions (BML)^{2,3},

as well as inflammation⁴. An “inflamed” synovium is indicated by palpable joint swelling, and can arise from synovial thickening or synovial fluid effusion⁵, both of which may induce knee pain^{6,7}. Although some cross-sectional studies revealed that knee effusion was associated with pain

From the Menzies Institute for Medical Research, University of Tasmania; Department of Radiology, Royal Hobart Hospital, Hobart, Australia; Department of Epidemiology and Preventive Medicine, Monash University, Melbourne, Australia; Department of Orthopedics, 3rd Affiliated Hospital of Southern Medical University, Guangzhou, China; Research Institute of Orthopedics, Shuguang Hospital, Shanghai University of Traditional Chinese Medicine, Shanghai, China; Department of Epidemiology and Biostatistics, School of Public Health, and the Arthritis Research Institute, 1st Affiliated Hospital, Anhui Medical University, Hefei, China.

Funded by the National Health and Medical Research Council of Australia (302204), the Tasmanian Community Fund (D0015018), the Arthritis Foundation of Australia (MRI06161), and the University of Tasmania Grant-Institutional Research Scheme (D0015019).

X. Wang, PhD, Student, Menzies Institute for Medical Research, University of Tasmania; X. Jin, PhD, Student, Menzies Institute for Medical Research, University of Tasmania; W. Han, MD, Menzies Institute for Medical Research, University of Tasmania, and Department of Orthopedics, 3rd Affiliated Hospital of Southern Medical University; Y. Cao, MD, Menzies

Institute for Medical Research, University of Tasmania, and Research Institute of Orthopedics, Shuguang Hospital, Shanghai University of Traditional Chinese Medicine; A. Halliday, MD, Department of Radiology, Royal Hobart Hospital; L. Blizzard, PhD, Menzies Institute for Medical Research, University of Tasmania; F. Pan, MD, Menzies Institute for Medical Research, University of Tasmania, and Department of Epidemiology and Biostatistics, School of Public Health, Anhui Medical University, and Arthritis Research Institute, 1st Affiliated Hospital, Anhui Medical University; B. Antony, PhD, Student, Menzies Institute for Medical Research, University of Tasmania; F. Cicuttini, PhD, Department of Epidemiology and Preventive Medicine, Monash University; G. Jones, MD, Menzies Institute for Medical Research, University of Tasmania; C. Ding, MD, Menzies Institute for Medical Research, University of Tasmania, and Arthritis Research Institute, 1st Affiliated Hospital, Anhui Medical University, and Department of Epidemiology and Preventive Medicine, Monash University.

Address correspondence to Dr. C. Ding, Private Bag 23, Hobart, Tasmania 7000, Australia. E-mail: changhai.ding@utas.edu.au
Accepted for publication August 27, 2015.

Personal non-commercial use only. The Journal of Rheumatology Copyright © 2015. All rights reserved.

in OA^{8,9,10,11}, only limited cohort studies investigated the associations^{12,13}. It is unknown whether synovial inflammation can cause knee pain independently or through interacting with other structural abnormalities^{9,14}.

Magnetic resonance imaging (MRI) is highly sensitive to detect knee structural abnormalities¹⁵ and is able to measure small amounts of intraarticular effusion^{16,17}. Ideally, effusion should be distinguished from synovitis by deploying contrast-enhanced (CE) MRI assessment. Because of the associated cost and potential side effects of contrast agents, non-CE MRI was more widely used in clinical research. Therefore, the phrase “effusion synovitis” has been proposed for the combined measurement of effusion and synovitis^{18,19}. Previous studies have assessed knee synovitis in multiple sites within the whole joint cavity^{14,20}, but not for effusion synovitis on non-CE images. Based on the complex anatomical knee structures and the occurrence and distribution of intraarticular fluid^{21,22}, the synovial lining space of the joint can be divided into 4 subregions: central portion, suprapatellar pouch, posterior femoral recess, and subpopliteal recess^{23,24}. The majority of the effusion is accumulated in the suprapatellar pouch, but it can also be found between femoral and tibial condyles around cruciate ligaments in the central portion, and less commonly in the posterior femoral recess and subpopliteal recess²³. So far, the contribution of effusion synovitis in the different subregions to knee pain is unknown. It has been suggested that the Western Ontario and McMaster Universities Osteoarthritis Index (WOMAC) cannot reflect different pain phenotypes. The weight-bearing items would reflect the pain source from mechanical overload, and nonweight-bearing items may represent biochemical or inflammatory pain²⁵. Thus, a better strategy would be to further investigate specific pain phenotypes. The aim of our study was, therefore, to describe the cross-sectional and longitudinal associations between effusion synovitis and knee pain in older adults.

MATERIALS AND METHODS

Subjects. The Tasmania Older Adult Cohort study is an ongoing prospective, population-based cohort study aimed to identify factors related to the development and progression of OA in older adults. Subjects between the ages of 50 and 80 years were randomly selected from the roll of electors in southern Tasmania (population 229,000), with equal sex proportion. Participants were excluded if they had contraindications to MRI. Baseline data (Phase 1) were collected from February 2002 to September 2004 in 1100 subjects. Followup data (Phase 2) were collected on average 2.6 years (range 1.3–4.8 yrs) later. Those who had self-reported rheumatoid arthritis (RA) were excluded for analyses. Our study was approved by the Southern Tasmania Health and Medical Human Research Ethics Committee, and written informed consent was obtained from all participants.

Anthropometrics and questionnaire. Height and weight were measured according to the protocol described previously²⁶, and BMI was calculated using height and weight (kg/m²).

Knee pain assessment. Self-reported knee pain (walking on flat surface, going up/down stairs, at night in the bed, sitting/lying, and stand upright) was assessed by the knee-specific WOMAC, with a 10-point pain scale from

0 (no pain) to 9 (most severe pain)²⁷. Total pain score (0–45) was created by summing all the subscale scores.

The 5 WOMAC pain subscales were clinically categorized into weight-bearing pain (including pain on flat surface, on stairs, and standing) and nonweight-bearing pain (including pain at night and sitting) as suggested by a previous study²⁵.

Presence of knee pain was defined as a pain score of 1 or greater. Change in knee pain score was calculated as followup value – baseline value, with a change in score of ≥ 1 indicating increased knee pain²⁸. We have calculated the smallest statistically significant difference for the change in total WOMAC knee pain score to be 0.8 for our population, so we defined an increase in pain as a change in score of 1 or greater²⁹.

Radiograph assessment. Knee radiograph was taken on the right knee at baseline. All images were scored by 2 musculoskeletal clinicians (with clinical experience of over 10 yrs) who were blinded to the patients' information. Each knee joint was scored for osteophytes and joint space narrowing (JSN), on a scale of 0–3 (0 = normal, 3 = severe) according to the Osteoarthritis Research Society International atlas³⁰. The osteophytes and JSN scores were summed to produce a knee total radiographic OA (ROA) score. A total ROA score of 1 or greater is defined as presence of ROA. Interobserver repeatability (weighted κ) was 0.61 for osteophyte and 0.64 for JSN.

Knee MRI measurements. Right knee MRI was performed in the sagittal plane on a 1.5T whole-body magnetic resonance unit (Picker International) using a commercial transmit/receive extremity coil. The MRI sequence protocol included a T1-weighted fat-suppression 3-D gradient-recalled acquisition in the steady state, flip angle 30°, repetition time 31 ms, echo time 6.71 ms, field of view 16 cm, 60 partitions, 512 × 512 pixel matrix, acquisition time 5 min 58 s, 1 acquisition; sagittal images were obtained at a partition thickness of 1.5 mm without a between-slice gap. The MRI also included a T2-weighted fat-suppressed fast spin echo, flip angle 90°, repetition time 3067 ms, echo time 112 ms, field of view 16 cm, 15 partitions, 228 × 256 pixel matrix; sagittal images were obtained at a slice thickness of 4 mm with an interslice gap of 0.5 mm to 1.0 mm²⁶.

Knee effusion synovitis was assessed as the amount of intraarticular fluid-equivalent signal on T2-weighted MRI (Figure 1) and was scored 0–3 according to the maximum estimated distension of the synovial cavity¹⁹. We distinguished knee effusion synovitis in 4 different subregions according to the anatomy of the joint synovial cavity²³. They were the suprapatellar pouch: a large pouch formed between the posterior suprapatellar fat pad (quadriceps femoris tendon) and the anterior surface of the femur; central portion: between the central femoral and tibial condyles, around the ligaments and menisci; posterior femoral recess: behind the posterior portion of each femoral condyle and the deep surface of the lateral and medial heads of the gastrocnemius; and subpopliteal recess: lies posteriorly between the lateral meniscus and the popliteal tendon. There was an obvious distention of the synovial cavity when effusion synovitis of Grade 2 was present, so pathological effusion synovitis was defined as any score of ≥ 2 ³¹. Total effusion synovitis of the whole joint was defined as a score of ≥ 2 in any subregion. Two independent observers who scored all images were blinded to the patients' information. The intraclass reliability assessed as weighted κ in 50 randomly selected images were 0.63–0.75 in different subregions, and the interclass reliability were 0.65–0.79.

Cartilage defects at medial tibial, medial femoral, lateral tibial, lateral femoral, and patellar sites were assessed at baseline on the T1-weighted MR images as follows: Grade 0 = normal cartilage, Grade 1 = focal blistering and intracartilaginous low-signal intensity area with an intact surface, Grade 2 = irregularities on the surface or bottom and loss of thickness < 50%, Grade 3 = deep ulceration with loss of thickness > 50%, and Grade 4 = full-thickness chondral wear with exposure of subchondral bone^{32,33}. Subchondral BML were scored 0–3 as described³³. BML was defined as a score of ≥ 1 at any site. The meniscal lesions (tears and extrusion) were scored separately (yes/no) at the anterior horn, body, and posterior horn of medial and lateral menisci. A total meniscal lesion score was summed and

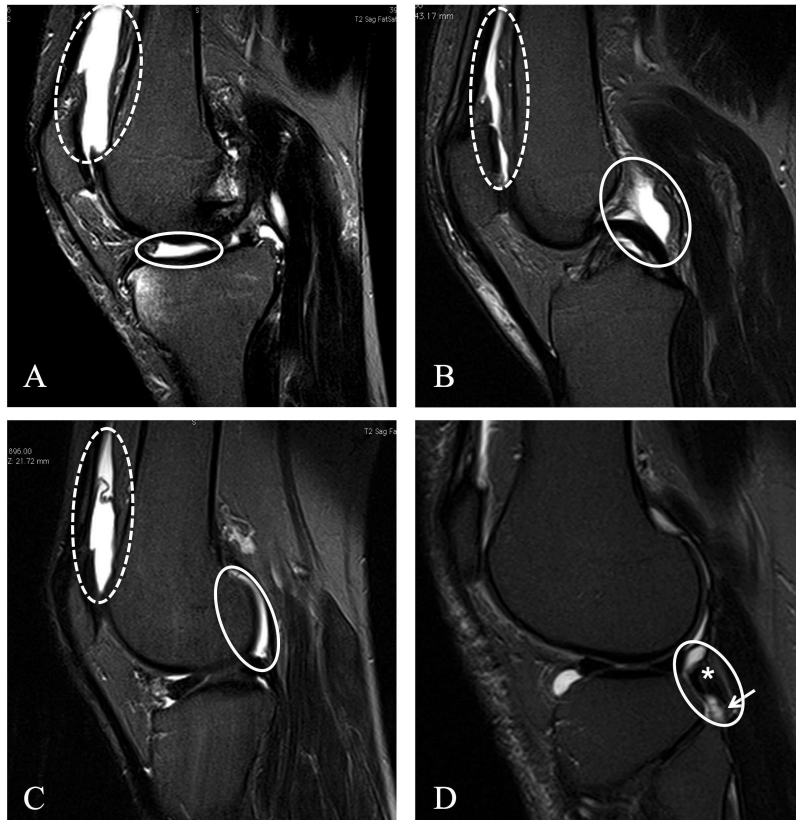


Figure 1. Typical T2-weighted fat-saturation fast spin echo sagittal images for effusion synovitis in different subregions. A. Grade 3 effusion synovitis in the medial suprapatellar pouch (dash circle) and Grade 2 central portion effusion synovitis (solid circle). B. Grade 1 midline suprapatellar pouch effusion synovitis (dash circle) and Grade 2 central effusion synovitis around posterior cruciate ligament (solid circle). C. Grade 2 effusions in the lateral posterior femoral recess (solid circle) and suprapatellar pouch (dash circle). D. Grade 2 subpopliteal effusion synovitis (solid circle) around the popliteal tendon (asterisk), extending to the popliteal bursa (arrow).

the value ranged from 0 to 18 (0–6 for tears, 0–6 for partial extrusions, and 0–6 for full extrusions)³⁴.

Data analysis. Student t tests or chi-square tests were used to compare differences in means or proportions as appropriate. In observational studies, the OR can overestimate prevalence ratio (PR) or relative risk (RR)³⁵. Therefore, univariable and multivariable logistic regression analysis and generalized linear analysis were used to estimate PR or RR for the associations between knee effusion synovitis (0–3) and presence or increases in knee pain³⁶. The analyses evaluated total WOMAC pain, the individual items of the pain scale, and the weight-bearing and nonweight-bearing items. Sensitivity analyses were performed to examine the associations with highest baseline knee pain scores (highest quartile of all pain variables vs other quartiles). We also used alternative thresholds to define a change of ≥ 2 or 3 as an increase in pain in sensitivity analyses. Age, sex, BMI, and ROA were used for adjustment in the multivariable analyses. Structural factors including cartilage defects, BML, and meniscal lesions were further added into the model to determine whether the associations were independent of other structural factors.

A p value < 0.05 (2-tailed) or a 95% CI not including 1 was considered as statistical significance. All analyses were performed on Stata V.12.0 (StataCorp.).

RESULTS

Participants who did not have a knee MRI scan at Phase 1 or

who had RA were excluded (n = 220) because our further study aimed to measure structural factors in OA. There were 880 subjects (50% women) included in our study. The average age at baseline was 62 years. There were no significant differences in terms of demographic characteristics between study cohort and those who were excluded (data not shown). Prevalence of knee joint effusion synovitis (≥ 2) was 67% overall (43% in suprapatellar pouch, 49% in central portion, 10% in posterior femoral recess, and 14% in subpopliteal recess). There were 110 individuals (11%) who had effusion synovitis in more than 2 regions. There was 44% of central portion effusion synovitis (≥ 2), 25% of posterior femoral recess effusion synovitis, and 36% of subpopliteal recess effusion synovitis that did not coexist with suprapatellar pouch effusion synovitis.

Characteristics of the subjects are presented in Table 1. Prevalence of knee pain (total score ≥ 1) was 52% at baseline. Subjects with and without baseline knee pain were similar in terms of age, female sex, knee ROA, and meniscal lesions; however, the subjects with baseline knee pain had greater BMI, cartilage defects, and BML, and had greater scores of

Table 1. Characteristics of the study sample at baseline. Two-tailed Student t tests are used for differences between means. Chi-square tests are used for percentages. All data presented were from baseline. Values are mean (SD) or percentages unless otherwise specified.

Characteristics	Knee Pain at Baseline		p
	Absent, n = 441	Present, n = 439	
Age, yrs	62.5 (7.4)	62.0 (7.5)	0.29
Female	48	50	0.14
Body mass index	27.1 (4.2)	28.5 (5.1)	< 0.01
Knee ROA	58	61	0.28
Bone marrow lesion	30	42	< 0.01
Cartilage defect	47	60	< 0.01
Meniscal lesion	77	81	0.11
Effusion synovitis present, any grade ≥ 2	50	50	0.70
Effusion synovitis, n			0.09
Grade 0	1	2	
Grade 1	149	142	
Grade 2	210	181	
Grade 3	81	114	

Characteristics	Knee Pain Over 2.6 Yrs		p
	Improved or Unchanged, n = 610	New or Worsening, n = 170	
Effusion synovitis present, any grade ≥ 2	78	22	0.01
Effusion synovitis, n			< 0.01
Grade 0	1	1	
Grade 1	214	41	
Grade 2	273	72	
Grade 3	122	56	

Values denoting statistical significance (p at $\alpha = 0.05$) are in bold face. ROA: radiographic osteoarthritis.

joint effusion synovitis in all subregions except central portion.

Over 2.6 years, 100 subjects were lost to followup: 28 died, 20 moved, 15 had joint replacement, 28 were physically unable to continue, and others refused or gave no reason. There were no significant differences in baseline characteristics, including age, sex, and disease status, between participants who remained in our study and those who dropped out (data not shown). Subjects experiencing increased (incident or worsening) knee pain (22%) had greater scores of baseline joint effusion synovitis in suprapatellar pouch, posterior femoral recess, and subpopliteal recess, and had higher prevalence of joint effusion synovitis in any subregions (Table 1).

Total knee pain and subscales in cross-sectional associations. Most subregions of effusion synovitis were not significantly associated with the presence of total knee pain (≥ 1 ; Supplementary Table 1, available from the authors on request); however, subjects with higher effusion synovitis grades in the whole knee, suprapatellar pouch, and subpopliteal recess had a greater total knee pain score of ≥ 5 (highest quartile) in unadjusted analyses (Figure 2A). The associations remained significant after adjusting for age, sex, BMI (but only significant for suprapatellar pouch effusion synovitis after further adjustment for ROA), and structural factors (Table 2). Suprapatellar pouch effusion synovitis was

associated with pain on flat surface and at night after adjustment for covariates including structural factors (Table 2). Joint effusion synovitis in central portion and posterior femoral recess were not significantly associated with total knee pain and pain subscales in adjusted analyses (Figure 2A, Table 2).

Weight-bearing and nonweight-bearing knee pain. In multivariable analyses, suprapatellar pouch effusion synovitis was not associated with weight-bearing knee pain (Supplementary Table 1 is available from the authors on request), but significantly associated with nonweight-bearing pain of ≥ 1 (PR 1.32, 95% CI 1.11–1.57) and of ≥ 3 (highest quartile; Figure 3A). Every grade increase in the suprapatellar pouch effusion synovitis was associated with 1.32-fold greater PR of nonweight-bearing knee pain of ≥ 3 . Effusion synovitis in other locations was not associated with these 2 pain subtypes.

Total knee pain and subscales in longitudinal associations. Joint effusion synovitis scores in the whole knee, suprapatellar pouch, posterior femoral recess, and subpopliteal recess were dose-dependently and significantly associated with an increase in total knee pain over 2.6 years in unadjusted analyses (Figure 2B). These associations remained significant (except for subpopliteal recess) after adjustment for covariates including structural factors (Table

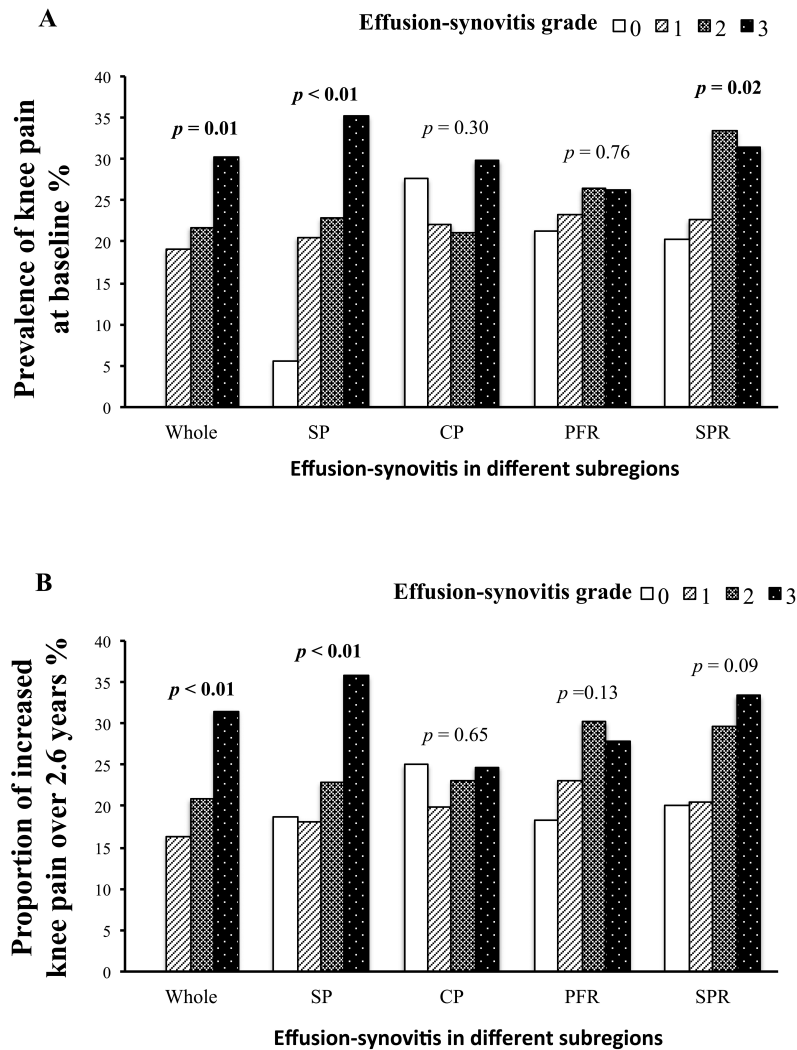


Figure 2. A. Associations between knee effusion synovitis in different subregions and total knee pain of ≥ 5 at baseline. B. Associations between knee effusion synovitis in different subregions and increases in total knee pain over 2.6 years. Whole effusion synovitis grade (0–3) was defined using the maximal score of subregions. One-way ANOVA were used to test the trend. P values denoting statistical significance at $\alpha = 0.05$ are in bold face. SP: suprapatellar pouch; CP: central portion; PFR: posterior femoral recess; SPR: subpopliteal recess.

3). Suprapatellar pouch effusion synovitis was significantly associated with most pain subscales (except for pain at night) after adjustment for age, sex, and BMI, and remained significant for pain on flat surface, on stairs, and when sitting after further adjustment for covariates including knee structures (Table 3). Posterior femoral recess effusion synovitis was not significantly associated with pain subscales in the first model, but its associations with pain at night and pain when sitting became significant after further adjustment (Table 3). Central portion effusion synovitis was not significantly associated with increases in total knee pain and knee pain subscales (Figure 2B, Table 3). We also defined change of pain (≥ 2 vs < 2 or ≥ 3 vs < 3) as an increase in knee pain, and found that magnitudes of associations were similar, but the significance

decreased because of reduced sample size in those with knee pain (Supplementary Table 2, Supplementary Table 3, available from the authors on request).

Weight-bearing and nonweight-bearing knee pain. In multivariable analyses (Figure 3B), suprapatellar pouch effusion synovitis was significantly associated with both increased nonweight-bearing and weight-bearing pain. Every grade increase in suprapatellar pouch effusion synovitis was associated with 1.47 and 1.29 greater risk, respectively, of increase in nonweight-bearing and weight-bearing knee pain over time. Central portion and posterior femoral recess effusion synovitis were only significantly associated with nonweight-bearing pain. No significant association was found for subpopliteal recess.

Table 2. Cross-sectional associations between knee joint effusion synovitis and knee pain at baseline. Dependent variables: knee pain (yes vs no for each pain subscale, total score ≥ 5 vs < 5 for total pain); independent variables: knee joint effusion synovitis (0–3). Values are PR (95% CI).

Effusion Synovitis Subregions	Multivariable*	Multivariable**
Suprapatellar pouch		
Total knee pain	1.29 (1.11–1.49)	1.33 (1.12–1.59)
Pain when walking on a flat surface	1.18 (1.02–1.36)	1.14 (0.97–1.35)
Pain when going up/down stairs	1.10 (1.00–1.21)	1.08 (0.96–1.20)
Pain at night while in bed	1.25 (1.09–1.43)	1.33 (1.14–1.56)
Pain when sitting or lying	1.16 (1.00–1.35)	1.21 (1.01–1.44)
Pain when standing upright	1.10 (0.95–1.28)	1.13 (0.95–1.34)
Central portion		
Total knee pain	1.07 (0.90–1.27)	1.13 (0.93–1.38)
Pain when walking on a flat surface	1.15 (0.98–1.35)	1.20 (1.00–1.45)
Pain when going up/down stairs	1.04 (0.94–1.15)	1.03 (0.92–1.16)
Pain at night while in bed	1.02 (0.87–1.18)	1.09 (0.91–1.29)
Pain when sitting or lying	0.97 (0.83–1.15)	1.00 (0.83–1.21)
Pain when standing upright	1.01 (0.86–1.18)	1.02 (0.84–1.24)
Posterior femoral recess		
Total knee pain	1.08 (0.92–1.27)	1.14 (0.94–1.37)
Pain when walking on a flat surface	1.11 (0.95–1.29)	1.16 (0.97–1.38)
Pain when going up/down stairs	1.06 (0.96–1.17)	1.10 (0.98–1.23)
Pain at night while in bed	1.05 (0.91–1.21)	1.09 (0.92–1.28)
Pain when sitting or lying	0.95 (0.81–1.12)	1.00 (0.83–1.21)
Pain when standing upright	0.96 (0.82–1.14)	1.05 (0.87–1.26)
Subpopliteal recess		
Total knee pain	1.16 (1.02–1.33)	1.12 (0.96–1.32)
Pain when walking on a flat surface	1.09 (0.96–1.24)	1.05 (0.90–1.22)
Pain when going up/down stairs	1.07 (0.98–1.16)	1.03 (0.93–1.14)
Pain at night while in bed	1.11 (0.99–1.25)	1.11 (0.97–1.28)
Pain when sitting or lying	1.14 (1.00–1.30)	1.14 (0.98–1.33)
Pain when standing upright	1.09 (0.96–1.24)	1.15 (0.99–1.32)

* Adjusted for age, sex, and body mass index. ** Further adjusted for radiographic osteoarthritis, bone marrow lesions, cartilage defects, and meniscal lesions. Values denoting statistical significance at $\alpha = 0.05$ are in bold face. PR: prevalence ratio.

DISCUSSION

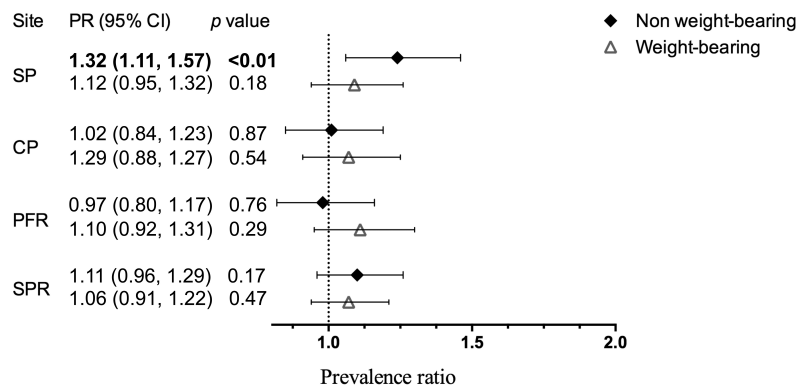
To the best of our knowledge, our study is the first to examine the cross-sectional and longitudinal associations between knee effusion synovitis at different sites and knee pain in older adults. We found that suprapatellar pouch effusion synovitis had the most consistent association with knee pain, followed by posterior femoral recess effusion synovitis. In contrast, central portion and subpopliteal recess effusion synovitis were not consistently associated with knee pain. Moreover, knee effusion synovitis was more consistently associated with nonweight-bearing than weight-bearing knee pain.

Usually, knee joint effusion synovitis was only assessed in the suprapatellar pouch. It can be evaluated by radiograph by measuring the widest anterior-posterior diameter of the lateral suprapatellar pouch³⁷, which is the largest recess of the joint with a great degree of stretch³⁸. However, only a moderate amount of suprapatellar effusion synovitis can be diagnosed by radiographs³⁹, and MRI is a more accurate modality that can delineate all compartmental effusion synovitis. In our study, we found that joint effusion synovitis was more common

in the central portion and suprapatellar pouch than posterior femoral recess and subpopliteal recess, which is consistent with previous reports²³. Although these synovial spaces were interconnected, we found that 25% to 44% of the effusion synovitis in other sites was independent of suprapatellar effusion synovitis, suggesting that these regional effusion synovitis sites can be missed if we only assess the suprapatellar pouch in traditional clinical examinations.

Previous cross-sectional studies reported that prevalence of effusion synovitis was significantly greater in patients with symptomatic knee OA^{8,40,41,42}. Besides, abnormal effusion synovitis was more frequently observed in OA with the knee pain group than without pain in middle-aged women⁴³, but nonsignificant association between joint effusion synovitis and knee pain were found in patients with OA⁴⁴. A recent study reported that synovitis at 7 sites (mainly medial parapatellar involvement), but not other sites (mainly site adjacent to the anterior cruciate ligament, loose bodies), was associated with increased knee pain⁴⁵. A longitudinal study reported that change of effusion was not associated with change in knee pain over 30 months¹². Knee joint effusion synovitis

A Cross-sectional associations between knee effusion-synovitis and pain (non weight-bearing vs. weight-bearing)



B Longitudinal associations between knee effusion-synovitis and pain (non weight-bearing vs. weight-bearing)

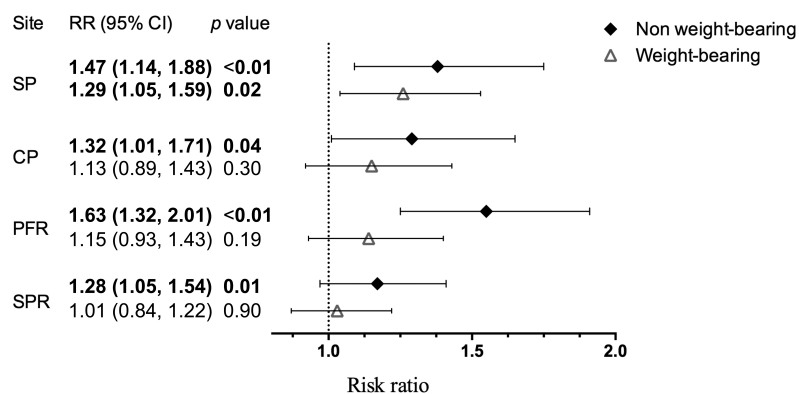


Figure 3. A. Prevalence ratio for associations between knee effusion synovitis in different subregions and weight-bearing/nonweight-bearing pain at baseline. B. Risk ratio for associations between knee effusion synovitis in different subregions and weight-bearing/nonweight-bearing pain over 2.6 years. Adjusted for age, sex, body mass index, radiographic osteoarthritis, bone marrow lesions, cartilage defects, and meniscal lesion. Bars denote 95% CI. Weight-bearing pain was categorized as ≥ 3 and < 3 , and nonweight-bearing pain as ≥ 2 and < 2 . SP: suprapatellar pouch; CP: central portion; PFR: posterior femoral recess; SPR: subpopliteal recess.

was not associated with frequent knee pain, but significant association was found between change in effusion synovitis severity and knee pain fluctuation in patients with ROA¹⁵. The reasons underlying these discrepancies are unclear, but they may exist because of the variations in study design, sample size, study populations, and/or durations of followup. In our current study with both cross-sectional and longitudinal designs, we found consistent association between joint effusion synovitis in the suprapatellar pouch and knee pain, supporting the clinical relevance of effusion synovitis in this compartment. Effusion synovitis per grade in the suprapatellar pouch was associated with 33% increased prevalence (≥ 5) and 26% progression of total knee pain, which are quite

evident considering that the overall prevalence of knee pain ≥ 5 was 24% and the increase of knee pain was 22% in this sample. This may indicate that the effusion synovitis from MRI is an indicator of clinical OA severity.

While Lo, *et al* reported that the effusion synovitis score was associated with weight-bearing knee pain but not nonweight-bearing pain⁹, we found that suprapatellar pouch effusion synovitis was associated with both nonweight-bearing and weight-bearing knee pain, and posterior femoral recess effusion synovitis was only associated with nonweight-bearing knee pain. Central portion effusion synovitis was weakly but significantly associated with an increase in nonweight-bearing knee pain. These suggest that the supra-

Table 3. Longitudinal associations between knee joint effusion synovitis and knee pain. Dependent variables: knee pain (change of 0 vs ≥ 1 for pain); and independent variables: knee joint effusion synovitis (0–3). Values are RR (95% CI).

Effusion Synovitis Subregions	Multivariable*	Multivariable**
Suprapatellar pouch		
Total knee pain	1.37 (1.15–1.62)	1.26 (1.04–1.52)
Pain when walking on a flat surface	1.58 (1.23–2.03)	1.44 (1.05–1.96)
Pain when going up/down stairs	1.41 (1.16–1.72)	1.27 (1.01–1.59)
Pain at night while in bed	1.29 (1.00–1.66)	1.28 (0.97–1.69)
Pain when sitting or lying	1.45 (1.10–1.91)	1.47 (1.08–2.00)
Pain when standing upright	1.36 (1.03–1.80)	1.22 (0.88–1.69)
Central portion		
Total knee pain	1.10 (0.91–1.32)	1.14 (0.92–1.41)
Pain when walking on a flat surface	1.09 (0.83–1.43)	1.04 (0.74–1.47)
Pain when going up/down stairs	1.09 (0.88–1.35)	1.07 (0.83–1.39)
Pain at night while in bed	1.10 (0.84–1.45)	1.16 (0.86–1.57)
Pain when sitting or lying	1.26 (0.94–1.68)	1.31 (0.96–1.79)
Pain when standing upright	1.18 (0.88–1.58)	1.19 (0.85–1.66)
Posterior femoral recess		
Total knee pain	1.22 (1.03–1.44)	1.37 (1.15–1.63)
Pain when walking on a flat surface	0.94 (0.71–1.25)	0.99 (0.72–1.36)
Pain when going up/down stairs	1.01 (0.82–1.25)	1.13 (0.90–1.41)
Pain at night while in bed	1.29 (1.00–1.65)	1.47 (1.15–1.89)
Pain when sitting or lying	1.33 (1.04–1.70)	1.47 (1.14–1.89)
Pain when standing upright	1.10 (0.83–1.46)	1.06 (0.77–1.48)
Subpopliteal recess		
Total knee pain	1.17 (1.01–1.35)	1.13 (0.96–1.32)
Pain when walking on a flat surface	1.27 (1.03–1.56)	1.21 (0.94–1.55)
Pain when going up/down stairs	1.10 (0.93–1.30)	1.01 (0.84–1.23)
Pain at night while in bed	1.17 (0.96–1.43)	1.23 (0.99–1.51)
Pain when sitting or lying	1.19 (0.95–1.49)	1.26 (1.00–1.59)
Pain when standing upright	1.21 (0.95–1.53)	1.10 (0.84–1.45)

* Adjusted for age, sex, and body mass index. ** Further adjusted for radiographic osteoarthritis, bone marrow lesions, cartilage defects, and meniscal lesions. Values denoting statistical significance at $\alpha = 0.05$ are in bold face. RR: relative risk ratio.

patellar effusion synovitis may induce knee pain through both mechanical and inflammatory mechanisms. Because of the limited spaces in other subregions, the location-specific effusion synovitis may cause nonweight-bearing knee pain through the inflamed synovium rather than mechanical stretching by excessive synovial effusion. Further, all these associations were independent of ROA, and other abnormal knee structural changes. In contrast, the significant association between subpopliteal recess effusion synovitis and knee pain was not independent of ROA and other abnormal knee structural changes. Our results indicate that effusion synovitis in posterior femoral recess and central portion may also have clinical use in predicting symptomatic OA.

We found a dose-response relationship between effusion synovitis score and increase in total knee pain, particularly for total joint and suprapatellar pouch. Previous studies tried to set thresholds of joint effusion by measuring the diameter or depth of suprapatellar pouch effusion on lateral knee radiograph³⁹, sagittal plane of MRI⁴⁶, or ultrasound⁴⁷; however, these thresholds were arbitrary and only single dimensional distance was measured in 1 location of knee

joint (mainly the suprapatellar pouch). It is very difficult to define a threshold between “physiological” and “pathological” using semiquantitative approaches. In fact, there was a very small number of participants whose effusion synovitis scores were 0 in our cohort (3 in total joint, 20 in suprapatellar pouch, and 31 in central portion). For this reason, it seems appropriate to use a more conservative definition for disease or pathology than we have in our current study. Besides, we found that an effusion synovitis score of 2 and greater was associated with more increases in knee pain, suggesting that it may be pathological. Our current study establishes the groundwork for further quantitative measurement of knee joint effusion synovitis in multiple subregions.

The strength of our study is that we performed both cross-sectional and longitudinal analyses in a community-based population with a large sample size. There are potential limitations in our study. First, the response rate at baseline was 57%, but there were no significant differences in baseline characteristics between those who responded and those who did not. Second, traumatic injury and other reasons such as

infection, crystal-induced arthropathies, and tumor can also cause effusion and pain, but those are rare situations in our population-based cohort. Third, we did not assess synovitis at some sites (e.g., Hoffa's fat pad) that may be associated with knee pain. Lastly, we only had a standing anterior-posterior semiflexed view of the right knee, so we were unable to detect the diameter of joint effusion in the suprapatellar pouch from radiographs.

Knee joint effusion synovitis has independent contributions to knee pain in older adults. While suprapatellar pouch effusion synovitis is associated with both nonweight-bearing and weight-bearing knee pain, posterior femoral recess and central portion effusion synovitis are only associated with nonweight-bearing knee pain.

ACKNOWLEDGMENT

We especially thank the participants who made our study possible, and we gratefully acknowledge the role of the Tasmania Older Adult Cohort staff and volunteers in collecting the data, particularly research nurses Catrina Boon and Pip Boon. We also thank Dr. Velandai Srikanth and Dr. Helen Cooley for assessing the radiographs.

REFERENCES

- Ding C, Cicuttini F, Scott F, Cooley H, Jones G. Knee structural alteration and BMI: a cross-sectional study. *Obes Res* 2005; 13:350-61.
- Felson DT, Chaisson CE, Hill CL, Totterman SM, Gale ME, Skinner KM, et al. The association of bone marrow lesions with pain in knee osteoarthritis. *Ann Intern Med* 2001;134:541-9.
- Sowers M, Hayes C, Jamadar D, Capul D, Lachance L, Jannausch M, et al. Magnetic resonance-detected subchondral bone marrow and cartilage defect characteristics associated with pain and X-ray-defined knee osteoarthritis. *Osteoarthritis Cartilage* 2003;11:387-93.
- Wang X, Blizzard L, Halliday A, Han W, Jin X, Cicuttini F, et al. Association between MRI-detected knee joint regional effusion-synovitis and structural changes in older adults: a cohort study. *Ann Rheum Dis* 2014 Dec 30 (E-pub ahead of print).
- Krasnokutsky S, Attur M, Palmer G, Samuels J, Abramson SB. Current concepts in the pathogenesis of osteoarthritis. *Osteoarthritis Cartilage* 2008;16 Suppl 3:S1-3.
- Hayashi D, Roemer FW, Dhina Z, Kwok CK, Hannon MJ, Moore C, et al. Longitudinal assessment of cyst-like lesions of the knee and their relation to radiographic osteoarthritis and MRI-detected effusion and synovitis in patients with knee pain. *Arthritis Res Ther* 2010;12:R172.
- Baker K, Grainger A, Niu J, Clancy M, Guermazi A, Crema M, et al. Relation of synovitis to knee pain using contrast-enhanced MRIs. *Ann Rheum Dis* 2010;69:1779-83.
- Hill CL, Gale DG, Chaisson CE, Skinner K, Kazis L, Gale ME, et al. Knee effusions, popliteal cysts, and synovial thickening: association with knee pain in osteoarthritis. *J Rheumatol* 2001;28:1330-7.
- Lo GH, McAlindon TE, Niu J, Zhang Y, Beals C, Dabrowski C, et al; OAI Investigators Group. Bone marrow lesions and joint effusion are strongly and independently associated with weight-bearing pain in knee osteoarthritis: data from the osteoarthritis initiative. *Osteoarthritis Cartilage* 2009;17:1562-9.
- Yusuf E, Kortekaas MC, Watt I, Huizinga TW, Kloppenburg M. Do knee abnormalities visualised on MRI explain knee pain in knee osteoarthritis? A systematic review. *Ann Rheum Dis* 2011;70:60-7.
- Kortekaas MC, Kwok WY, Reijnen M, Watt I, Huizinga TW, Kloppenburg M. Pain in hand osteoarthritis is associated with inflammation: the value of ultrasound. *Ann Rheum Dis* 2010;69:1367-9.
- Hill CL, Hunter DJ, Niu J, Clancy M, Guermazi A, Genant H, et al. Synovitis detected on magnetic resonance imaging and its relation to pain and cartilage loss in knee osteoarthritis. *Ann Rheum Dis* 2007;66:1599-603.
- Zhang Y, Nevitt M, Niu J, Lewis C, Torner J, Guermazi A, et al. Fluctuation of knee pain and changes in bone marrow lesions, effusions, and synovitis on magnetic resonance imaging. *Arthritis Rheum* 2011;63:691-9.
- Roemer FW, Kassim Javaid M, Guermazi A, Thomas M, Kiran A, Keen R, et al. Anatomical distribution of synovitis in knee osteoarthritis and its association with joint effusion assessed on non-enhanced and contrast-enhanced MRI. *Osteoarthritis Cartilage* 2010;18:1269-74.
- Loeulle D, Chary-Valckenaere I. MRI in OA: from cartilage to bone marrow lesion. *Osteoporos Int* 2012;23 Suppl 8:S867-9.
- Li W, Abram F, Pelletier JP, Raynauld JP, Dorais M, d'Anjou MA, et al. Fully automated system for the quantification of human osteoarthritic knee joint effusion volume using magnetic resonance imaging. *Arthritis Res Ther* 2010;12:R173.
- Habib S, Guermazi A, Ozonoff A, Hayashi D, Crema MD, Roemer FW. MRI-based volumetric assessment of joint effusion in knee osteoarthritis using proton density-weighted fat-suppressed and T1-weighted contrast-enhanced fat-suppressed sequences. *Skeletal Radiol* 2011;40:1581-5.
- Hunter DJ, Guermazi A, Lo GH, Grainger AJ, Conaghan PG, Boudreau RM, et al. Evolution of semi-quantitative whole joint assessment of knee OA: MOAKS (MRI Osteoarthritis Knee Score). *Osteoarthritis Cartilage* 2011;19:990-1002.
- Peterfy CG, Guermazi A, Zaim S, Tirman PF, Miaux Y, White D, et al. Whole-Organ Magnetic Resonance Imaging Score (WORMS) of the knee in osteoarthritis. *Osteoarthritis Cartilage* 2004;12:177-90.
- Guermazi A, Roemer FW, Hayashi D, Crema MD, Niu J, Zhang Y, et al. Assessment of synovitis with contrast-enhanced MRI using a whole-joint semiquantitative scoring system in people with, or at high risk of, knee osteoarthritis: the MOST study. *Ann Rheum Dis* 2011;70:805-11.
- Schweitzer ME, Falk A, Berthoty D, Mitchell M, Resnick D. Knee effusion: normal distribution of fluid. *AJR Am J Roentgenol* 1992;159:361-3.
- De Maeseneer M, Van Roy P, Shahabpour M, Gosselin R, De Ridder F, Osteaux M. Normal anatomy and pathology of the posterior capsular area of the knee: findings in cadaveric specimens and in patients. *AJR Am J Roentgenol* 2004;182:955-62.
- Fenn S, Datir A, Saifuddin A. Synovial recesses of the knee: MR imaging review of anatomical and pathological features. *Skeletal Radiol* 2009;38:317-28.
- Kaneko K, De Mouy EH, Robinson AE. Distribution of joint effusion in patients with traumatic knee joint disorders: MRI assessment. *Clin Imaging* 1993;17:176-8.
- Stratford PW, Kennedy DM, Woodhouse LJ, Spadoni GF. Measurement properties of the WOMAC LK 3.1 pain scale. *Osteoarthritis Cartilage* 2007;15:266-72.
- Jones G, Ding C, Scott F, Glisson M, Cicuttini F. Early radiographic osteoarthritis is associated with substantial changes in cartilage volume and tibial bone surface area in both males and females. *Osteoarthritis Cartilage* 2004;12:169-74.
- Bellamy N, Buchanan WW, Goldsmith CH, Campbell J, Stitt LW. Validation study of WOMAC: a health status instrument for measuring clinically important patient relevant outcomes to antirheumatic drug therapy in patients with osteoarthritis of the hip or knee. *J Rheumatol* 1988;15:1833-40.

28. Stannus OP, Jones G, Blizzard L, Cicuttini FM, Ding C. Associations between serum levels of inflammatory markers and change in knee pain over 5 years in older adults: a prospective cohort study. *Ann Rheum Dis* 2013;72:535-40.
29. Angst F, Aeschlimann A, Stucki G. Smallest detectable and minimal clinically important differences of rehabilitation intervention with their implications for required sample sizes using WOMAC and SF-36 quality of life measurement instruments in patients with osteoarthritis of the lower extremities. *Arthritis Rheum* 2001;45:384-91.
30. Altman RD, Gold GE. Atlas of individual radiographic features in osteoarthritis, revised. *Osteoarthritis Cartilage* 2007;15 Suppl A:A1-56.
31. Roemer FW, Guermazi A, Felson DT, Niu J, Nevitt MC, Crema MD, et al. Presence of MRI-detected joint effusion and synovitis increases the risk of cartilage loss in knees without osteoarthritis at 30-month follow-up: the MOST study. *Ann Rheum Dis* 2011;70:1804-9.
32. Ding C, Cicuttini F, Scott F, Cooley H, Boon C, Jones G. Natural history of knee cartilage defects and factors affecting change. *Arch Intern Med* 2006;166:651-8.
33. Ding C, Garnero P, Cicuttini F, Scott F, Cooley H, Jones G. Knee cartilage defects: association with early radiographic osteoarthritis, decreased cartilage volume, increased joint surface area and type II collagen breakdown. *Osteoarthritis Cartilage* 2005;13:198-205.
34. Ding C, Martel-Pelletier J, Pelletier JP, Abram F, Raynauld JP, Cicuttini F, et al. Knee meniscal extrusion in a largely non-osteoarthritic cohort: association with greater loss of cartilage volume. *Arthritis Res Ther* 2007;9:R21.
35. Barros AJ, Hiraakata VN. Alternatives for logistic regression in cross-sectional studies: an empirical comparison of models that directly estimate the prevalence ratio. *BMC Med Res Methodol* 2003;3:21.
36. Zou G. A modified poisson regression approach to prospective studies with binary data. *Am J Epidemiol* 2004;159:702-6.
37. Singer AM, Naimark A, Felson D, Shapiro J. Comparison of overhead and cross-table lateral views for detection of knee-joint effusion. *AJR Am J Roentgenol* 1985;144:973-5.
38. Hall FM. Radiographic diagnosis and accuracy in knee joint effusions. *Radiology* 1975;115:49-54.
39. Tai AW, Alparslan HL, Townsend BA, Oei TN, Govindarajulu US, Aliabadi P, et al. Accuracy of cross-table lateral knee radiography for evaluation of joint effusions. *AJR Am J Roentgenol* 2009;193:W339-44.
40. Fernandez-Madrid F, Karvonen RL, Teitge RA, Miller PR, Negendank WG. MR features of osteoarthritis of the knee. *Magn Reson Imaging* 1994;12:703-9.
41. Torres L, Dunlop DD, Peterfy C, Guermazi A, Prasad P, Hayes KW, et al. The relationship between specific tissue lesions and pain severity in persons with knee osteoarthritis. *Osteoarthritis Cartilage* 2006;14:1033-40.
42. Kornaat PR, Bloem JL, Ceulemans RY, Riyazi N, Rosendaal FR, Nelissen RG, et al. Osteoarthritis of the knee: association between clinical features and MR imaging findings. *Radiology* 2006;239:811-7.
43. Hayes CW, Jamadar DA, Welch GW, Jannausch ML, Lachance LL, Capul DC, et al. Osteoarthritis of the knee: comparison of MR imaging findings with radiographic severity measurements and pain in middle-aged women. *Radiology* 2005;237:998-1007.
44. Link TM, Steinbach LS, Ghosh S, Ries M, Lu Y, Lane N, et al. Osteoarthritis: MR imaging findings in different stages of disease and correlation with clinical findings. *Radiology* 2003;226:373-81.
45. de Lange-Brokaar BJ, Ioan-Facsinay A, Yusuf E, Visser AW, Kroon HM, Andersen SN, et al. Degree of synovitis on MRI by comprehensive whole knee semi-quantitative scoring method correlates with histologic and macroscopic features of synovial tissue inflammation in knee osteoarthritis. *Osteoarthritis Cartilage* 2014;22:1606-13.
46. Kolman BH, Daffner RH, Sciulli RL, Soehnlen MW. Correlation of joint fluid and internal derangement on knee MRI. *Skeletal Radiol* 2004;33:91-5.
47. Hong BY, Lee JI, Kim HW, Cho YR, Lim SH, Ko YJ. Detectable threshold of knee effusion by ultrasonography in osteoarthritis patients. *Am J Phys Med Rehabil* 2011;90:112-8.