

# Longterm Followup of Rituximab Therapy in Patients with Rheumatoid Arthritis: Results from the Belgian MabThera in Rheumatoid Arthritis Registry

Filip De Keyser, Ilse Hoffman, Patrick Durez, Marie-Joëlle Kaiser, Rene Westhovens, and the MIRA Study Group

**ABSTRACT. Objective.** Our study reports the results of the MIRA (MabThera In Rheumatoid Arthritis) registry, set up to collect data about clinical usage, patient profile, and retention of rituximab (RTX) treatment in daily clinical practice in Belgium.

**Methods.** Patients with active rheumatoid arthritis (RA) who failed at least 1 anti-tumor necrosis factor (anti-TNF) treatment were included in our study between November 2006 and October 2011. At baseline, demographics, medication, disease history, disease activity, rheumatoid factor (RF), and anticyclic citrullinated peptide antibodies (anti-CCP) status were recorded. Evolution of the 28-joint Disease Activity Score (DAS28)-erythrocyte sedimentation rate, retreatments, and reasons for therapy stop were followed prospectively.

**Results.** The MIRA registry included 649 patients, with mean disease duration of  $12.8 \pm 0.4$  years and DAS28 values at inclusion of  $5.85 \pm 0.48$ . Patients received on average  $2.82 \pm 0.07$  (range 1–9) RTX treatments, over a mean followup period of  $93.1 \pm 2.6$  weeks. At database lock, 433 patients (66.7%) were still under RTX treatment, 182 (28.0%) had stopped treatment, and 34 (5.2%) were lost to followup. Ineffectiveness ( $n = 108$ , 59%) and safety concerns ( $n = 39$ , 22%) were the most frequent reasons for discontinuing RTX therapy. From 2006 to 2011, RTX practice patterns clearly evolved toward RTX being started in patients with a lower number of previously failed anti-TNF drugs and lower baseline DAS28 values. A lower number of previous anti-TNF drugs, and positivity for RF and anti-CCP, predicted more successful longterm treatment. RTX treatment provided adequate longterm disease control.

**Conclusion.** In our daily practice study, RTX provided good longterm disease control and treatment retention in refractory patients with RA. Over the years, rheumatologists tended to start this treatment in patients with fewer previous anti-TNF treatments and lower disease activity. (J Rheumatol First Release Aug 15 2014; doi:10.3899/jrheum.131279)

## Key Indexing Terms:

RHEUMATOID ARTHRITIS  
RITUXIMAB

ANTIRHEUMATIC AGENTS  
COHORT STUDY  
DAS28

From the Department of Rheumatology, Ghent University Hospital, Ghent; GZA St-Augustinus Hospital, Antwerp; Department of Rheumatology, University Hospital Liège, Liège; Pôle de Recherche en Rhumatologie; Institut de Recherche Expérimentale et Clinique; Université Catholique de Louvain and Cliniques Universitaires Saint-Luc, Brussels; Skeletal Biology and Engineering Research Center; the Department of Development and Regeneration; KU Leuven, Leuven, Belgium.

The Belgian MIRA cohort was supported by the Royal Belgian Society for Rheumatology (KBVR/SRBR) and an unrestricted grant from Roche (Basel, Switzerland).

F. De Keyser, MD, PhD, Department of Rheumatology, Ghent University Hospital; I. Hoffman, MD, PhD, GZA St-Augustinus Hospital; P. Durez, MD, PhD, Pôle de Recherche en Rhumatologie, Institut de Recherche Expérimentale et Clinique, Université Catholique de Louvain, Cliniques Universitaires Saint-Luc; M.J. Kaiser, MD, PhD, Department of Rheumatology, University Hospital Liège; R. Westhovens, MD, PhD, Skeletal Biology and Engineering Research Center, Department of Development and Regeneration, KU Leuven, Rheumatology.

Address correspondence to Prof. Dr. F. De Keyser, Ghent University Hospital 0K12, Department of Rheumatology, De Pintelaan 185, B-9000 Ghent, Belgium. E-mail: filip.dekeyser@ugent.be

Accepted for publication May 15, 2014.

Rituximab (RTX) is a genetically engineered monoclonal anti-CD20 antibody, indicated for treating rheumatoid arthritis (RA) after prior failure of antitumor necrosis factor (anti-TNF) drugs. It has been shown to be safe, effective, and prevent progression of radiological lesions in this indication<sup>1,2,3,4</sup>.

RTX effectively suppresses disease activity over a relatively long period, but because response decreases over time, retreatment is often necessary. Five-year followup data from the Randomized Evaluation of Long-Term Efficacy of Rituximab in RA (REFLEX) study show that RTX retains its effectiveness over multiple treatment courses<sup>5</sup>.

The MIRA (MabThera In Rheumatoid Arthritis) registry was set up to collect data about clinical usage, treatment retention, and reasons for stopping treatment in daily clinical practice. Setup and interim results were reported previously<sup>6</sup>. Our study reports longterm RTX treatment practice, and analyzes predictors of successful longterm treatment.

## MATERIALS AND METHODS

**Study population.** All patients in Belgium and Luxembourg starting RTX treatment between November 2006 and October 2011 were eligible for inclusion in the Belgian MIRA registry. In Belgium, RTX treatment is available and reimbursed for patients receiving methotrexate with baseline 28-joint count Disease Activity Score (DAS28) > 3.7 after failure of at least 1 anti-TNF.

At least 6 months after the previous treatment, patients are eligible for retreatment if the first treatment elicited moderate to good response at Week 16 and their current DAS28 is  $\geq 3.2$ . No specific exclusion criteria were defined.

Our study was approved by the ethical committees of all participating centers. All patients provided written informed consent prior to inclusion in our study.

**Study design and data collection.** The design and data collection of the MIRA registry study were described previously<sup>6</sup>. Briefly, baseline data included demographics, medication and disease history, rheumatoid factor (RF), and anticyclic citrullinated peptide antibodies (anti-CCP) status. RTX treatment was administered as two 1000-mg infusions given 2 weeks apart, with administration of 1 g of paracetamol, 100 mg of methylprednisolone, and an antihistaminic prior to RTX infusion. European League Against Rheumatism (EULAR) response was evaluated at Week 16, and followup data (treatment status, patient global visual analog scale, DAS28) were collected every 8–12 weeks and before retreatment, for as long as patients continued RTX treatment. Data were collected until October 2012.

When RTX treatment was stopped, the date and reason for discontinuation were recorded. Patients were considered lost to followup if no data were collected for at least 1 year.

**Data analysis and statistics.** Data are presented as mean  $\pm$  standard error or percentages. Statistical tests used were t test or ANOVA for normally distributed variables, Mann-Whitney U test for variables not distributed normally, chi-square for categorical variables, and Kaplan-Meier analysis for treatment survival (SPSS 20, IBM Corporation). A  $p < 0.05$  was considered statistically significant.

## RESULTS

**Population characteristics.** The MIRA registry enrolled 649 patients with RA treated by 80 rheumatologists in 52 centers. At inclusion, patients were  $57.4 \pm 0.5$  years old, with disease duration of  $12.8 \pm 0.4$  years, and DAS28 values of  $5.85 \pm 0.48$ . Medication history included 1 previous biologic in 54.2%, 2 biologics in 32.4%, and more than 2 biologics in 12.5% of patients. Before starting RTX, 29.2% of patients used prednisolone and 28.1% methylprednisolone.

**Evolution of baseline characteristics over time.** Over the 5-year inclusion period, the number of failed anti-TNF drugs used before starting RTX treatment decreased significantly (chi-square,  $p < 0.001$ ; Table 1). In parallel, the DAS28 values of patients starting RTX treatment also decreased significantly over time (ANOVA,  $p < 0.001$ ).

**Therapy retention and reasons for discontinuation.** At database lock, 433 patients (66.7%) were still under RTX treatment, 182 patients (28.0%) had stopped, and 34 patients (5.2%) were lost to followup. Mean overall followup time was  $93.1 \pm 2.6$  weeks (range 8–252) and mean RTX treatment time was  $168.7 \pm 4.5$  weeks (Figure 1). At Week 16, 78.2% of patients had at least moderate EULAR response. Patients with MIRA received on average  $2.82 \pm 0.07$  (range 1–9) RTX courses with a mean interval of 262.0

*Table 1.* Evolution of the baseline characteristics of patients starting rituximab (RTX) treatment over time. Over the period 2006–2011, patients starting RTX treatment evolved toward lower DAS28 values ( $p < 0.001$ , ANOVA) and fewer previously failed anti-TNF treatments ( $p < 0.001$ , chi-square).

Yr	n	No. Anti-TNF (%)			DAS28 (mean $\pm$ SE)
		1	2	3	
2006	10	50.0	20.0	30.0	6.31 $\pm$ 0.59
2007	185	50.8	28.1	21.1	6.23 $\pm$ 0.08
2008	171	50.9	39.8	9.4	5.87 $\pm$ 0.08
2009	133	56.4	36.8	6.8	5.61 $\pm$ 0.10
2010	102	75.5	21.6	2.9	5.52 $\pm$ 0.12
2011	48	66.7	29.2	4.2	5.65 $\pm$ 0.17
			$p < 0.001$		$p < 0.001$

DAS28: Disease Activity Score using 28 joint counts; TNF: tumor necrosis factor; SE: standard error.

$\pm 3.8$  days. Ineffectiveness ( $n = 108$ , 59.3%) and safety concerns ( $n = 39$ , 21.4%) were the most frequent reasons for discontinuation. Thirteen patients (7.1%, 2.0% of total) died during followup. Causes of death were pneumonia ( $n = 2$ ); metastatic bronchus carcinoma, myeloma, and suicide ( $n = 1$  each); and unknown ( $n = 8$ ).

Safety concerns included infusion reaction ( $n = 13$ , 2.0%); infection ( $n = 6$ , 0.9%); malignancy ( $n = 5$ , 0.8%); cytopenia and adenopathy ( $n = 2$  each); abnormal liver enzymes, hallucinations, hypertension, atrial fibrillation, fatigue, and unexplained pain ( $n = 1$  each). In 5 patients, the safety reason was not further specified.

Additional reasons for discontinuation were personal decision of the patient (13/16), diarrhea, pregnancy wish, and participation in a clinical trial ( $n = 1$ ).

The reasons for RTX discontinuation significantly shifted with age: while ineffectiveness was the most frequent reason for discontinuation in younger patients and decreased with age, safety concerns occurred more frequently in older patients.

**Longterm disease control with RTX treatment.** Patients with longer drug retention had a significantly lower number of previous anti-TNF, and higher prevalence of RF and anti-CCP positivity in comparison with patients who stopped (Table 2). Age, sex, disease duration, and baseline DAS28 did not differ significantly between patients who continued and discontinued RTX.

DAS28 values (Figure 2) declined sharply over the first year of RTX treatment and stabilized afterward.

## DISCUSSION

The MIRA registry prospectively collected data on a population of 649 patients with longstanding active RA treated with RTX after failure of at least 1 anti-TNF agent.

In this daily clinical practice setting, RTX retention was relatively high: treatment was discontinued in 28.0% of patients after a mean followup of  $93.1 \pm 2.6$  weeks. Ineffec-

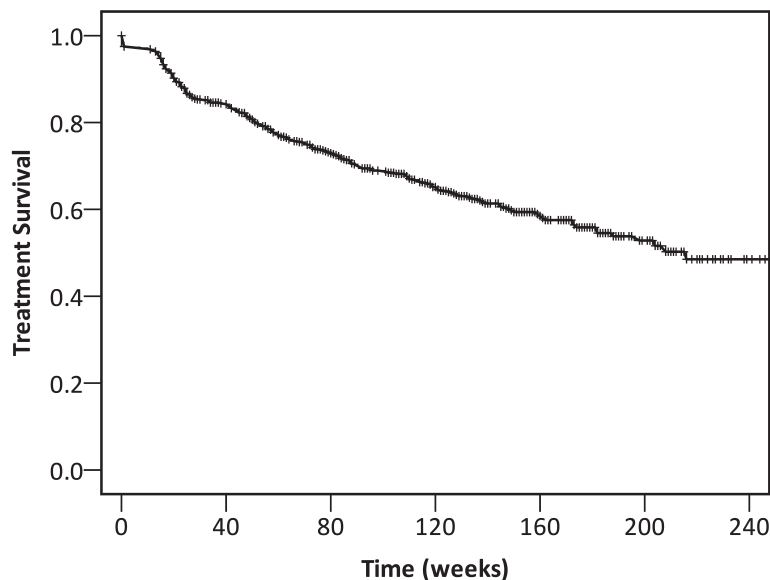


Figure 1. Kaplan-Meier curve for rituximab treatment survival. In the overall MIRA population, maximum followup duration was 254 weeks and mean treatment time was  $168.7 \pm 4.5$  weeks. Vertical tick marks on the survival curve represent patients censored at the end of followup. The followup period was variable because patients were included between November 2006 and October 2011, and the study ended in October 2012. MIRA: MabThera In Rheumatoid Arthritis.

Table 2. Factors predicting longterm treatment success with rituximab (RTX). Patients who continued RTX treatment were previously treated with a significantly lower number of anti-TNF agents in comparison with those who discontinued RTX during the study. Additionally, prevalence of RF and anti-CCP positivity was significantly higher in the group that continued treatment. DAS28, age, sex, and disease duration did not differ significantly between the groups who continued and discontinued RTX treatment.

Characteristics	Continued, n = 433	Stopped, n = 216	p	Test
Age, yrs, mean $\pm$ SD	57.354 $\pm$ 0.59	57.59 $\pm$ 0.92	0.819	t test
Sex (% female)	77.3	74.6	0.485	Mann-Whitney U
Disease duration, yrs, mean $\pm$ SD	12.73 $\pm$ 0.51	13.79 $\pm$ 0.76	0.264	Mann-Whitney U
RF positivity (%)	85.3	71.6	0.001	chi-square
Anti-CCP positivity (%)	85.8	69.7	0.003	chi-square
No. previous anti-TNF, mean $\pm$ SD	1.39 $\pm$ 0.042	1.73 $\pm$ 0.069	< 0.001	chi-square
DAS28, mean $\pm$ SD	5.76 $\pm$ 0.05	5.97 $\pm$ 0.09	0.09	t test

TNF: tumor necrosis factor; RF: rheumatoid factor; anti-CCP: anticyclic citrullinated peptide antibodies; DAS28: Disease Activity Score using 28 joint counts.

tiveness was the most frequently reported reason for discontinuation, followed by safety concerns. Although age did not predict treatment success in our study, the relative number of treatment discontinuations for safety reasons tended to be higher for older patients.

Longterm disease control under RTX, analyzed in a subpopulation of patients treated for at least 3 years, was good, with DAS28 declining sharply over the first year and remaining stable for the remainder of our study.

Over the 5-year inclusion period (2006–2011) of the

MIRA study, RTX treatment was increasingly started in patients with less active disease, and as a second biological, after only 1 failed anti-TNF drug. RTX can be considered a good choice for patients who have failed a first or single anti-TNF treatment<sup>7,8,9,10,11</sup>.

In correspondence with other reports<sup>12,13,14,15,16</sup>, long-term treatment success in the MIRA population was associated with RF and anti-CCP positivity, whereas age, sex, disease duration, and baseline DAS28 values were not predictive for longer drug retention.

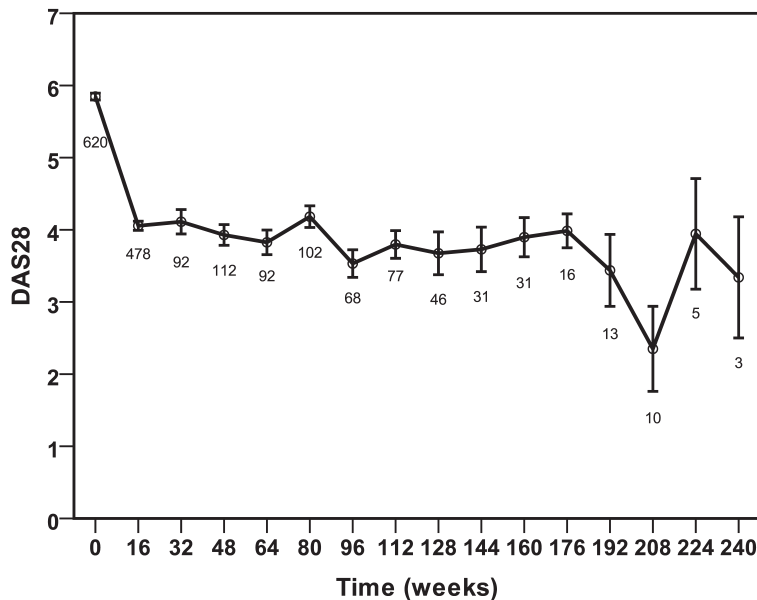


Figure 2. DAS28 values over time. Data are presented as mean  $\pm$  SE; numbers below the graph represent the number of DAS28 measurements per timepoint, which was lower than the number of patients followed at that timepoint, especially for patients with longer followup duration. DAS28: 28-joint Disease Activity Score.

## ACKNOWLEDGMENT

We thank the Royal Belgian Society for Rheumatology (KBVR/SRBR) and an unrestricted grant from Roche (Basel, Switzerland). The authors acknowledge the contribution of Veerle Persy, MD, PhD (Hugin Mugin Research) as an independent medical writer.

## APPENDIX

List of MIRA Study Group collaborators: De Meulenaere, Leon (Ambroise Paré, Mons); De Keyser, Van den Bosch (AZ Alma, Sijsele); Maertens (AZ Damiaan Campus H. Hart, Oostende), Vandevyvere (AZ Groeninge, Kortrijk); Raeman (AZ Jan Palfijn, Merksem); Ghyselen (AZ Lokeren, Lokeren); Castro, Stappaerts (AZ Middelaere, Ghent); Reyckler (AZ Oudenaarde, Oudenaarde); Lensen (AZ Seruys, Oostende); De Brabanter, Maeyaert (AZ Sint Lucas, Brugge); Ackerman, Luyten (AZ Sint Lucas, Ghent); De Clercq, Hoffman, Schatteman (AZ St Augustinus, Wilrijk); D'hondt, Peene (AZ St Jan, Brugge); Maenaut (AZ St Jozef, Malle); Daumerie, Docquier (CH Jolimont Lobby, Haine St Paul); Halleux (CH Ste Elisabeth, Heusy); Fontaine (CHC Liege, Liege); Cremer (CHC, Waremme); Mathy (CHD, Dinant); Martin (CHR St Joseph Warquignies, Boussu); Daens, Fernandez Lopez (CHU Brugmann, Brussels), Jeukens, Nizet (CHU Liege, Chenee); Kaiser, Lust, Ribbens (CHU Sart Tilman, Liege); Di Romana (CHU St Pierre, Brussels); Schreiber (CHU Tivoli, La Louviere); Dall'Armeline, Jardinet (Clinique Notre-Dame de Grâce ASBL, Gosselies), Steinfeld (Clinique Saint Jean, Site Botanique, Brussels); Brigode (Clinique St Pierre, Ottignies); Tant (Erasmie, Anderlecht); Francois (Europaziekenhuizen - St Michiel, Brussels); Van Bruwaene (H Hartziekenhuis, Roeselare); Van den Bergh (Hopital Sainte Therese, Montignies s/ Sambre); Zangerle (IFAC Marche, Aye); Declerck (Imeldaziekenhuis, Mechelen); Mindlin (Iris Sud, Brussels); Durez (Mont Godine, Yvoir); Ravelingien (OLV Aalst, Aalst); Van Essche (Private practice, Bonheiden), Cheroutre (Private practice, St Niklaas), Van den Bossche (Private practice, St Niklaas); Volders (Reumacentrum, Hasselt); Herman (St Blasius, Dendermonde); Coutellier (St Luc Bouge, Jambes); Vanneville (SZ Roeselare, Roeselare); Gyselbrecht, Van Den Berghe (SZA, Aalst); Verbruggen (UZ Brussels, Brussels), Aspeslagh, Carron, De

Keyser, Elewaut, Malfait, Mielants, Piette, Stubbe, Van den Bosch, Vander Cruyssen, Verbruggen (UZ Ghent, Ghent); Westhovens (UZ Leuven, Leuven); Lechkar (UZA, Edegem); Corluy (Virga Jesse Ziekenhuis, Hasselt); Hirsch (Zitha Kliniek, Luxembourg); Berghs, Geussens, Vanhoof (ZOL St Jan, Genk).

## REFERENCES

- Bokarewa M, Lindholm C, Zendjanchi K, Nadali M, Tarkowski A. Efficacy of anti-CD20 treatment in patients with rheumatoid arthritis resistant to a combination of methotrexate/anti-TNF therapy. *Scand J Immunol* 2007;66:476–83.
- Haraoui B, Bokarewa M, Kallmeyer I, Bykerk VP. Safety and effectiveness of rituximab in patients with rheumatoid arthritis following an inadequate response to 1 prior tumor necrosis factor inhibitor: the RESET Trial. *J Rheumatol* 2011;38:2548–56.
- Cohen SB, Emery P, Greenwald MW, Dougados M, Furie RA, Genovese MC, et al. Rituximab for rheumatoid arthritis refractory to anti-tumor necrosis factor therapy: results of a multicenter, randomized, double-blind, placebo-controlled, phase III trial evaluating primary efficacy and safety at twenty-four weeks. *Arthritis Rheum* 2006;54:2793–806.
- Keystone E, Emery P, Peterfy CG, Tak PP, Cohen S, Genovese MC, et al. Rituximab inhibits structural joint damage in patients with rheumatoid arthritis with an inadequate response to tumour necrosis factor inhibitor therapies. *Ann Rheum Dis* 2009;68:216–21.
- Lee YH, Bae S-C, Song GG. The efficacy and safety of rituximab for the treatment of active rheumatoid arthritis: a systematic review and meta-analysis of randomized controlled trials. *Rheumatol Int* 2011;31:1493–9.
- Keystone EC, Cohen SB, Emery P, Kremer JM, Dougados M, Loveless JE, et al. Multiple courses of rituximab produce sustained clinical and radiographic efficacy and safety in patients with rheumatoid arthritis and an inadequate response to 1 or more tumor necrosis factor inhibitors: 5-year data from the REFLEX study. *J Rheumatol* 2012;39:2238–46.

7. Dudler J, Finckh A, Kyburz D, Langenegger T, Möller B, Schmiedel U, et al. Swiss consensus statement: Recommendations for optimising re-treatment with MabThera (rituximab) in rheumatoid arthritis. *Swiss Med Wkly* 2010;140:w13073.
8. Vander Cruyssen B, Durez P, Westhovens R, Kaiser M-J, Hoffman I, De Keyser F. The Belgian MIRA (MabThera In Rheumatoid Arthritis) registry: clues for the optimization of rituximab treatment strategies. *Arthritis Res Ther* 2010;12:R169.
9. Slimani S, Lukas C, Combe B, Morel J. Rituximab in rheumatoid arthritis and the risk of malignancies: report from a French cohort. *Joint Bone Spine* 2011;78:484–7.
10. Du Pan SM, Scherer A, Gabay C, Finckh A. Differential drug retention between anti-TNF agents and alternative biological agents after inadequate response to an anti-TNF agent in rheumatoid arthritis patients. *Ann Rheum Dis* 2012;71:997–9.
11. Chatzidionysiou K, Lie E, Nasonov E, Lukina G, Hetland ML, Tarp U, et al. Highest clinical effectiveness of rituximab in autoantibody-positive patients with rheumatoid arthritis and in those for whom no more than one previous TNF antagonist has failed: pooled data from 10 European registries. *Ann Rheum Dis* 2011;70:1575–80.
12. Soliman MM, Hyrich KL, Lunt M, Watson KD, Symmons DP, Ashcroft DM. Rituximab or a second anti-tumor necrosis factor therapy for rheumatoid arthritis patients who have failed their first anti-tumor necrosis factor therapy? Comparative analysis from the British Society for Rheumatology Biologics Register. *Arthritis Care Res* 2012;64:1108–15.
13. Finckh A, Ciurea A, Brulhart L, Möller B, Walker UA, Courvoisier D, et al. Which subgroup of patients with rheumatoid arthritis benefits from switching to rituximab versus alternative anti-tumor necrosis factor (TNF) agents after previous failure of an anti-TNF agent? *Ann Rheum Dis* 2010;69:387–93.
14. Finckh A, Ciurea A, Brulhart L, Kyburz D, Möller B, Dehler S, et al. B cell depletion may be more effective than switching to an alternative anti-tumor necrosis factor agent in rheumatoid arthritis patients with inadequate response to anti-tumor necrosis factor agents. *Arthritis Rheum* 2007;56:1417–23.
15. Kekow J, Mueller-Ladner U, Schulze-Koops H. Rituximab is more effective than second anti-TNF therapy in rheumatoid arthritis patients and previous TNF $\alpha$  blocker failure. *Biologics* 2012;6:191–9.
16. Solau-Gervais E, Prudhomme C, Philippe P, Duhamel A, Dupont-Créteur C, Legrand JL, et al. Efficacy of rituximab in the treatment of rheumatoid arthritis. Influence of serologic status, coprescription of methotrexate and prior TNF-alpha inhibitors exposure. *Joint Bone Spine* 2012;79:281–4.