

The Modified Hand Mobility in Scleroderma Test and Skin Involvement — A Followup Study

Gunnel Sandqvist, Dirk M. Wuttge, and Roger Hesselstrand

ABSTRACT. Objective. To study the change in the modified Hand Mobility in Scleroderma (mHAMIS) test from early to advanced stages of systemic sclerosis (SSc), and the relationship between mHAMIS and skin involvement during followup.

Methods. This retrospective study includes 65 patients with baseline disease duration of ≤ 3 years who were assessed with the mHAMIS test at baseline and at 1 or 2 predefined followup points (3.1–5 yrs and 5.1–9 yrs after disease onset). Studied measures were the modified Rodnan skin score (mRSS), mRSS of the hand, serum cartilage oligomeric matrix protein, and digital vascular lesions.

Results. The mHAMIS and the mRSS hand changed synchronously during the first 5 years after disease onset ($r_s = 0.44$, $p = 0.001$). In the group with high mHAMIS at baseline, both mHAMIS and mRSS hand improved significantly at the first followup ($p < 0.05$), and the improvement sustained during the followup in the mRSS hand. Patients with antitopoisomerase I and anti-RNA polymerase III antibodies had significantly higher mHAMIS at baseline ($p = 0.003$) and at the second followup ($p = 0.030$) compared to patients with anticentromere antibodies. Patients with digital vascular lesions at baseline had significantly higher mHAMIS during the followup ($p < 0.05$) compared to patients without. The mHAMIS improved significantly during the followup in patients with immunosuppressive treatment in early disease ($p < 0.05$), but not in patients without this treatment.

Conclusion. The mHAMIS reflects disease activity in fibrosis in early stages of SSc. In later stages it can be regarded as a measure of damage arising from fibrotic and vascular involvement, making it suitable as an endpoint in followup examinations. (First Release May 1 2016; J Rheumatol 2016; 43:1356–62; doi:10.3899/jrheum.151142)

Key Indexing Terms:

MODIFIED HAND MOBILITY IN SCLERODERMA TEST

SYSTEMIC SCLEROSIS

Systemic sclerosis (SSc; scleroderma) is an autoimmune disease characterized by microvascular injury and excessive fibrosis of the skin and internal organs¹. Skin involvement is a manifest consequence of SSc, and correlates well with organ involvement². Three phases of skin involvement can be identified: the edematous phase, with increased amounts of interstitial fluid; the indurative phase, during which collagen is deposited in the skin resulting in stiffness; and the atrophic phase, with thinning of the abnormal skin. In the atrophic phase, tautness of the skin may remain in some cases despite low or no disease activity³. Skin thickness is often determined using the modified Rodnan skin score (mRSS)⁴, which provides a measure of the skin involvement of the whole surface of the body. The mRSS reflects the severity of

fibrotic skin involvement but it is unclear whether it can be used to assess disease activity. Further, the mRSS has some shortcomings related to interobserver variability^{5,6} and the inability to distinguish between skin thickness and tightness, especially in the fingers during the atrophic phase. It is, however, possible that biomarkers such as serum cartilage oligomeric matrix protein (COMP) could be used to monitor disease activity related to fibrosis⁷.

The hands account for only a small fraction of the total skin area of the body, but skin involvement of the hands is related to limitations in hand mobility and activities of daily life^{8,9,10,11,12}. Because hand involvement is one of the early signs of the disease, it is important to study hand involvement separately, especially in studies on the outcome of therapy. Although the pathological processes involved in SSc are not yet fully understood, it is possible that a specific kind of treatment affects only fibrotic manifestations. If this is indeed the case, it is important to use tools that specifically measure fibrotic involvement and the functional consequences of fibrosis.

The Hand Mobility in Scleroderma (HAMIS) test¹³ has been used in assessment of hand function in SSc^{13,14}. The test can be administered by professionals with special knowledge of hand function and SSc such as occupational therapists, physiotherapists, physicians, or research nurses.

From the Department of Clinical Sciences Lund, Section of Rheumatology, Lund University, Skåne University Hospital, Lund, Sweden.

Supported by grants from the Swedish Medical Research Council, the Medical Faculty of Lund University, the Swedish Rheumatism Association, Norrbacka-Eugenia Fund, King Gustaf V 80-year Fund, the Österlund Foundation, and the Kock Foundation.

G. Sandqvist, RegOT, PhD; D.M. Wuttge, MD, PhD; R. Hesselstrand, MD, PhD, Department of Clinical Sciences Lund, Section of Rheumatology, Lund University, Skåne University Hospital.

Address correspondence to G. Sandqvist, Department of Rheumatology, Skåne University Hospital, S-221 85 Lund, Sweden.

E-mail: gunnel.sandqvist@med.lu.se

Accepted for publication March 31, 2016.

HAMIS consists of differently sized grips and movements evaluating mobility in fingers and wrist usually assessed in an ordinary range-of-motion test. Finger items are flexion, extension, abduction, and abduction of the thumb. Wrist items are pronation, supination, dorsal extension, and palmar flexion. Advantages of the HAMIS test are the feasibility and the high interobserver and intraobserver reliability¹³. The HAMIS test reflects the consequences of skin involvement, in moderate and significant correlation with mRSS in early disease. However, there is no obvious relationship between mRSS and HAMIS in advanced disease when the skin is tight but thin^{10,15,16}. Our research group recently presented an item-reduced HAMIS test called modified HAMIS (mHAMIS). The mHAMIS is composed of 4 out of the 9 items from the original HAMIS. The items in mHAMIS are finger flexion, finger extension, finger abduction, and dorsal extension. The mHAMIS has shown significant correlations with mRSS and hand skin score, as well as the ability to discriminate between limited cutaneous SSc (lcSSc) and diffuse cutaneous SSc (dcSSc) in the first 3 years after disease onset¹⁵. These results demonstrated the mHAMIS test's usefulness in evaluating the consequences of skin involvement in the early stages of the disease when information is needed concerning appropriate therapy, but the test's properties in a longitudinal perspective are unclear. The aim of our present study was to examine the change of mHAMIS from early to advanced SSc, and the mHAMIS relationship with skin involvement during longterm followup.

MATERIALS AND METHODS

Subjects. All patients were included, within the context of our regular followup program, who were assessed with the mHAMIS test within the first 3 years of disease onset and at least once more during followup, and who fulfilled the American College of Rheumatology criteria for SSc¹⁷. The study group consisted of 65 patients (47 with lcSSc and 18 with dcSSc). Disease onset was defined as the time of first non-Raynaud manifestation. The relevant clinical characteristics of the patients are presented in Table 1.

Study design. This longitudinal study was based on measurements between 1998 and 2011. Data were split into 2 followup points in relation to disease duration at followup: 3.1 to 5 years, and 5.1 to 9 years after disease onset. Patients may have assessments in 1 or more of these groups, and may also have multiple assessments in the same group. Therefore, to avoid possible duplication of data, the patient's middle assessment was used in the first followup and the last assessment in the second followup.

Ethical considerations. Our study was conducted in accordance with the Declaration of Helsinki, and was approved by the Regional Ethics Committee in Lund. The patients were given verbal information on the aim of the study, and written consent was obtained.

Instruments. The patients' skin involvement was characterized by subdivision into lcSSc and dcSSc, measurement of the mRSS total skin score based on palpation of 17 anatomic sites⁴, and a subscore measuring skin involvement on the fingers, the hands, and the forearms (here referred to as mRSS hand). The mRSS hand was assessed separately in both hands, giving an mRSS hand score of 0 to 18 points. Digital vascular lesions were defined as digital tip ulcerations or pitting scars. Serum COMP was measured with a commercial sandwich ELISA using 2 monoclonal antibodies directed against separate antigenic determinants (AnaMar). The detection limit is 0.1 u/l and the intraassay and interassay coefficient of variation is < 5%.

Table 1. Baseline characteristics of the 65 patients with systemic sclerosis. Data are n (%) unless otherwise indicated.

Age at disease onset, yrs, median (IQR)	52 (45–63.5)
Disease duration at baseline, yrs, median (IQR)	1.5 (0.8–2.2)
Female, n (%)	50 (77)
lcSSc	47 (71)
Vascular lesions	24 (37)
ANA-positive	56 (86)
ACA-positive	15 (23)
ARA-positive	9 (14)
ATA-positive	12 (19)
Immunosuppressive treatment	18 (28)
Prednisolone (yes)	24 (37)
First followup	
Immunosuppressive treatment (yes)	30 (60)
Prednisolone (yes)	17 (33)
Second followup	
Immunosuppressive treatment (yes)	24 (51)
Prednisolone (yes)	12 (25)

IQR: interquartile range; lcSSc: limited cutaneous systemic sclerosis; ANA: antinuclear antibody; ACA: anticentromere antibodies; ATA: antitopoisomerase I antibody; ARA: anti-RNA polymerase III antibody.

Hand mobility was assessed with the mHAMIS test. Both hands were assessed separately, giving an mHAMIS score of 0 to 24 points¹⁵. These objective disease variables were assessed within the context of our regular followup program.

Statistical analysis. Because of the sample size and distribution, nonparametric analyses were used. Data were presented as median and interquartile range (IQR), and as numbers and percentages. The changes in the mHAMIS test were analyzed on an individual basis as well as on a group level. On an individual basis, a change of 6 points for mHAMIS and 5 points for mRSS hand was deemed clinically relevant. The cutoff was determined before analyzing data and was exclusively determined on the basis of our clinical experience of what is a noticeable change. We consider that a change of mHAMIS of 6 points out of 24 possible in a test involving 8 items is an obvious difference that is of value to the patient. The same argument was made for mRSS hand: 5 points out of 18 possible in a test involving 6 measuring points ought to make a difference for the patient. A difference of < 2 points in both instruments was classified as unchanged. To further investigate the change of the mHAMIS test, the subjects were divided into 2 subgroups according to the mean of the mHAMIS score at baseline: supramedian is a median value of 6 points or more, and inframedian is < 6 points. The Wilcoxon signed-rank test was used to test for differences between the baseline and the followup, and the Mann–Whitney U test was used for comparison between 2 groups. Associations between variables were analyzed using the Spearman's correlation. P values < 0.05 were considered statistically significant.

RESULTS

Hand mobility, skin involvement, and serum COMP in a longitudinal perspective. Of the 65 patients with mHAMIS measures at baseline, 52 had been assessed a second time within 3.1 to 5 years after disease onset, and 46 of the 65 patients had been assessed within 5.1 to 9 years after disease onset. Because the assessments took place during clinical care, the time between assessments varied from patient to patient. Baseline measures were assessed in median (IQR) 1.5 (0.8–2.2) years after disease onset, the first followup was 4.1 (3.6–5.0) years after disease onset, and the second

followup 6.7 (6–7.8) years after disease onset. The time between baseline and the first followup was 2.6 (1.9–3.1) years and between baseline and the second followup, 5.1 (4.3–6.6) years.

In the individual analysis we found that mHAMIS changed in about 45% of the patients at both followup points. At the first followup, a larger number of patients had improved than worsened, while the proportion was relatively similar at the second followup. The mRSS hand improved in about 43% of patients. Most of them had a clinically relevant improvement at the second followup (Figure 1).

Skin involvement, including mRSS and mRSS hand, improved significantly from baseline to the first and to the second followup points ($p < 0.01$; Table 2). Serum COMP improved significantly between baseline and the second followup ($p = 0.003$), while mHAMIS did not change significantly between baseline and the followup (between baseline and first followup, $p = 0.068$, and between baseline and second followup, $p = 0.688$; Table 2).

The patients were divided into 2 groups depending on the mHAMIS score at baseline. In the inframedian group, the mHAMIS was in median (IQR) 2.0 (1–3) and mRSS hand was 4.6 (2–7). Both mHAMIS and mRSS hand were stable during the followup and did not change significantly (mHAMIS: between baseline and first followup, $p = 0.480$, and between baseline and second followup, $p = 0.520$; in

mRSS hand the corresponding p values were 0.361 and 0.104, respectively; Figure 2A). In the supramedian group, into which the majority of patients with dcSSc fell, the median (IQR) of mHAMIS was 10 (7–12), and 9 (6–13.5) in mRSS hand. During the first 5 years after disease onset, mHAMIS and mRSS hand changed synchronously, but not in the later stage (Figure 2B). There was a significant improvement in mHAMIS between baseline and the first followup ($-2, -5$ to 0 ; $p = 0.024$), but not between baseline and the second followup ($-1.5, -6.8$ to 2 ; $p = 0.420$). A negative value indicates improvement. The mRSS hand improved significantly at both the first followup ($-2, -4.5$ to 0 ; $p = 0.004$) and the second ($-4, -8$ to -2 ; $p = 0.001$).

Patients with immunosuppressive treatment at baseline and first followup had significantly higher mHAMIS and mRSS hand scores compared to patients without this treatment. The mHAMIS was 6 (3.5–10) compared to 2 (1–9), $p = 0.029$, and mRSS hand 7 (5.3–10.8) compared to 4 (2–8.5), $p = 0.032$. Patients with immunosuppressive treatment in this early stage improved significantly in mHAMIS between baseline and the first followup ($p = 0.005$) and between baseline and the second followup ($p = 0.011$). Patients without this treatment did not change either way. The change was between baseline and first followup ($p = 0.430$), and between baseline and second followup ($p = 0.107$; Figure 3). In patients with immunosuppressive treatment, the mRSS

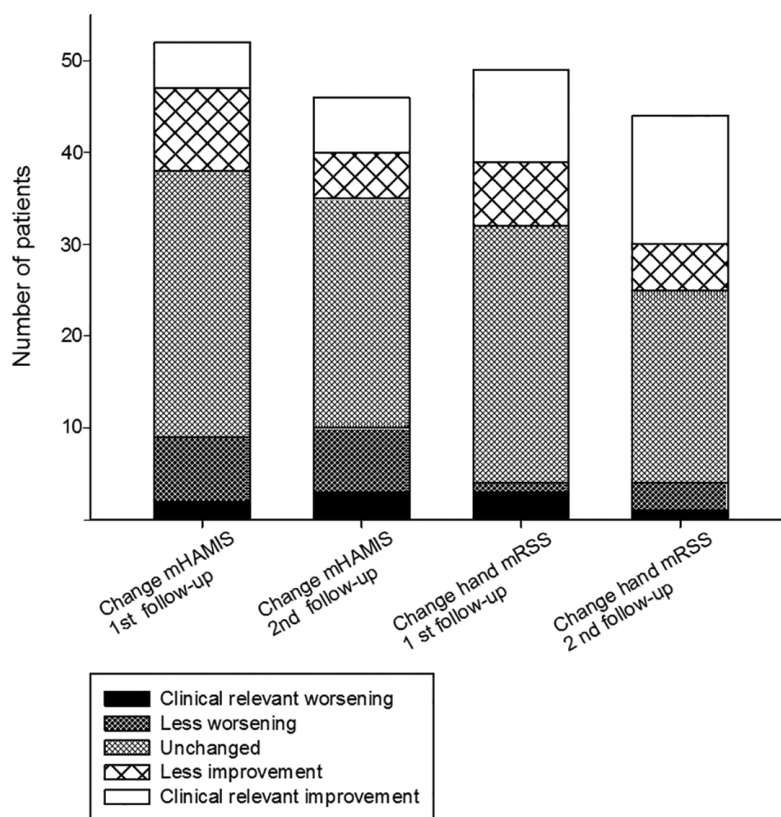


Figure 1. Progress of individual basis of mHAMIS and mRSS hand during the followup. mHAMIS: modified Hand Mobility in Scleroderma test; mRSS: modified Rodnan skin score.

Table 2. Skin involvement, hand mobility, and serum COMP at baseline and the evolution during the followup. Except for number data, data are median (IQR). Negative change in values = improvement.

	Baseline, 0–3.0 yrs, n = 65	First followup, 3.01–5 yrs, n = 52	Change between baseline and first followup	Second followup, 5.01–9 yrs, n = 46	Change between baseline and second followup
mRSS	9 (4–17.5), n = 63	6 (2–15), n = 47	–2.5 (–7 to 0.8)**, n = 45	4 (0.5–7), n = 45	–4 (–11.8 to –1)**, n = 29
mRSS hand	6 (4–9.8), n = 64	6 (2–8.5), n = 49	0 (–4 to 0)*, n = 49	2 (0–6), n = 44	–2 (–6 to –0.3)**, n = 44
mHAMIS	5 (2–9), n = 64	4 (1–8), n = 51	–1.0 (–3 to 1.8), n = 51	3 (0–8.3), n = 46	0 (–2.3 to 2), n = 46
Serum COMP	12 (9–16), n = 43	10 (8–14), n = 39	–1 (–4.8 to 2), n = 33	11 (7–13.5), n = 41	–2 (–8.7 to 1)*, n = 30

* p = 0.01. ** p = 0.001. COMP: cartilage oligomeric matrix protein; IQR: interquartile range; mRSS: modified Rodnan skin score; mHAMIS: modified Hand Mobility in Scleroderma test.

hand changed significantly between baseline and the first followup ($p = 0.008$) and between baseline and the second followup ($p = 0.0001$). In the group without treatment, corresponding p values for change were $p = 0.763$ and $p = 0.428$ (data on change in mRSS hand not shown).

Associations between mHAMIS and mRSS hand, mRSS, serum COMP, and digital vascular lesions. The mHAMIS baseline values and the Δ values at the first followup were significantly correlated with baseline and Δ values of mRSS hand, and serum COMP (Table 3). The mRSS hand at baseline correlated significantly with mHAMIS at the first and second followup [$r_s = 0.54$ ($p = 0.001$) and $r_s = 0.64$ ($p = 0.001$), respectively]. This was interpreted as fibrotic skin and high disease activity in early disease causing high mHAMIS, i.e., impaired hand mobility in a later stage.

Patients with dcSSc had significantly higher mHAMIS at baseline, in lcSSc 3 (1–7) compared to dcSSc 8 (4.5–12.8), $p = 0.002$, and in mRSS hand, 5 (2–8) in lcSSc compared to 11 (6–14) in dcSSc ($p = 0.001$). There were, however, no differences in changes between lcSSc and dcSSc, neither of mHAMIS nor of mRSS hand at the followup. The change of mHAMIS at the first followup was –1.5 (–2.3 to 2) in lcSSc and –1 (–3.3 to 0.8) in dcSSc. At the second followup, the corresponding values were 0 (–3 to 0.8) in lcSSc and 0 (–2 to 0) in dcSSc. The change of mRSS hand at the first followup was –1 (–3.8 to 0) in lcSSc and 0 (–5 to 1.5) in dcSSc. At the second followup the change was –2 (–6 to –1) in lcSSc and –2 (–9 to 2) in dcSSc.

Patients with antitopoisomerase I (ATA) and anti-RNA polymerase III antibodies (ARA) had significantly higher mHAMIS scores at baseline and at the second followup compared to patients with anticentromere antibodies (ACA). Scores for mHAMIS in patients with ATA and ARA at baseline in median (IQR) were 8 (6.5–10.5) compared to 2 (1–6; $p = 0.003$) in ACA. In the second followup, the values were 8.5 (4.8–13.5) in ATA and ARA compared to 2 (0–6), $p = 0.030$, in ACA. Compared to patients without lesions, those with digital vascular lesions at baseline had significantly higher mHAMIS at first followup: 7 (2.8–14.8) vs 2.5 (0–6.3), $p = 0.006$; and at second followup 6 (2.8–14) vs 2 (0–4.8), $p = 0.011$. Compared to those without vascular lesions, patients with vascular lesions also had higher mRSS

hand at baseline: 8 (6–12) vs 4 (2–7.8), $p = 0.002$; and at first followup: 8.5 (3.5–12) vs 4 (2–6), $p = 0.020$. These results indicate that high disease activity, measured with mRSS hand in early disease, as well as ARA, ATA, and vascular lesions in early disease may be risk factors for impaired mobility in advanced disease.

DISCUSSION

We demonstrated here that in the early stage of the disease, mHAMIS had clear correlations with measurements that assess the fibrotic evolution and the fibrotic activity in the skin. The finding indicates that the mHAMIS fulfills the criteria of the OMERACT filter¹⁸ regarding truth, and we therefore suggest that mHAMIS can be valuable in assessing the outcome of therapy directed toward reducing fibrotic skin manifestations in the early stage of SSc. However, even if mHAMIS changed in the early stage of the disease and was higher in patients with dcSSc, that would not be enough to fulfill the OMERACT criteria of discrimination and sensitivity to change. To ensure this fulfillment, mHAMIS have to be used in prospective interventional studies.

However, in contrast to mRSS hand, the mHAMIS did not improve significantly in a longterm perspective in the whole study group. Even if mHAMIS changed ≥ 3 units in more than 40% of the patients during followup, the change was not uniform. Just as many worsened as improved. This is in contrast to mRSS hand, where 40% changed, all improvement. This may happen because thin but tight skin may score a low mRSS but a high mHAMIS. In the later stages of the disease, skin atrophy dominates, which often means a skin tightly tethered to the underlying tissue³. That patients with higher mHAMIS at baseline (supramedian group) had a significant improvement at first followup but not at the second could mean that mHAMIS in later stages is likely measuring the damage caused by previous fibrotic activity. The mHAMIS could therefore serve as a feasible endpoint in routine followup and clinical trials. From a patient's perspective, it would make more sense to assess the mobility of the fingers rather than to measure the perception of skin thickness, which may or may not affect this mobility.

Interestingly, there is also a relationship between skin involvement, hand mobility, and digital vascular lesions. In

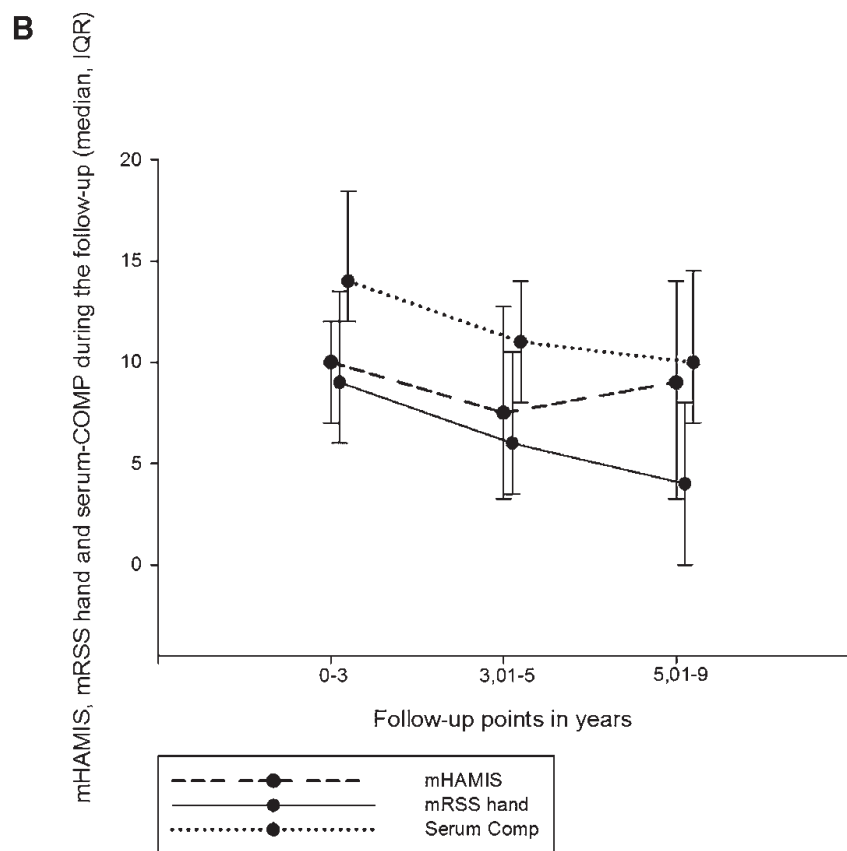
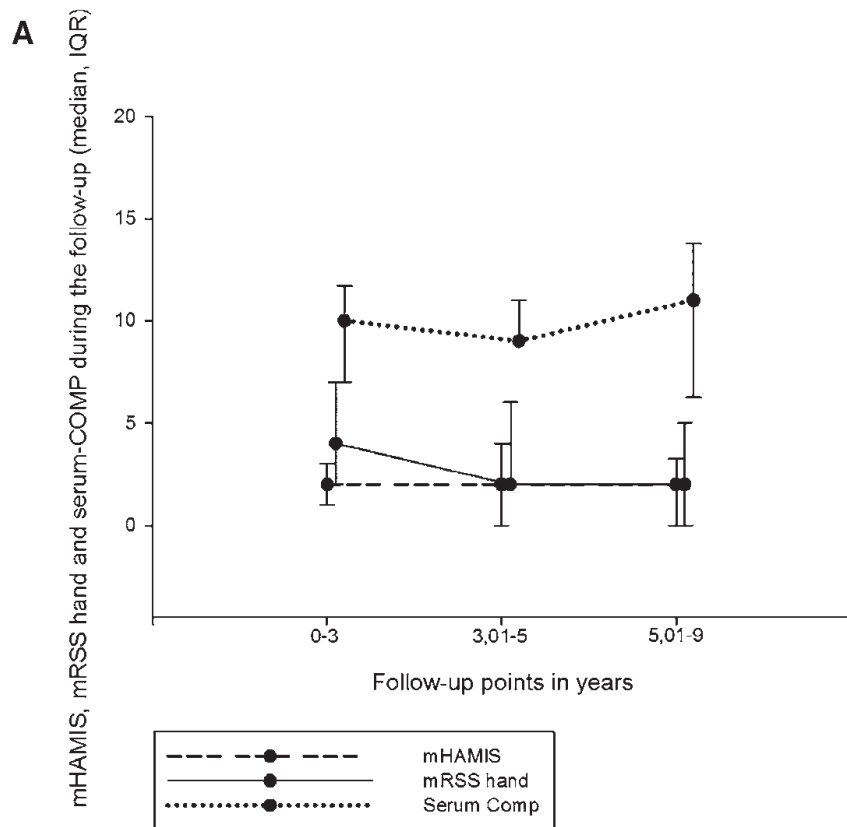


Figure 2. A. Longitudinal followup of mHAMIS, mRSS hand, and serum COMP in patients with low mHAMIS at baseline. B. Longitudinal followup of mHAMIS, mRSS hand, and serum COMP in patients with high mHAMIS at baseline. mHAMIS: modified Hand Mobility in Scleroderma test; mRSS: modified Rodnan skin score; COMP: cartilage oligomeric matrix protein; IQR: interquartile range.

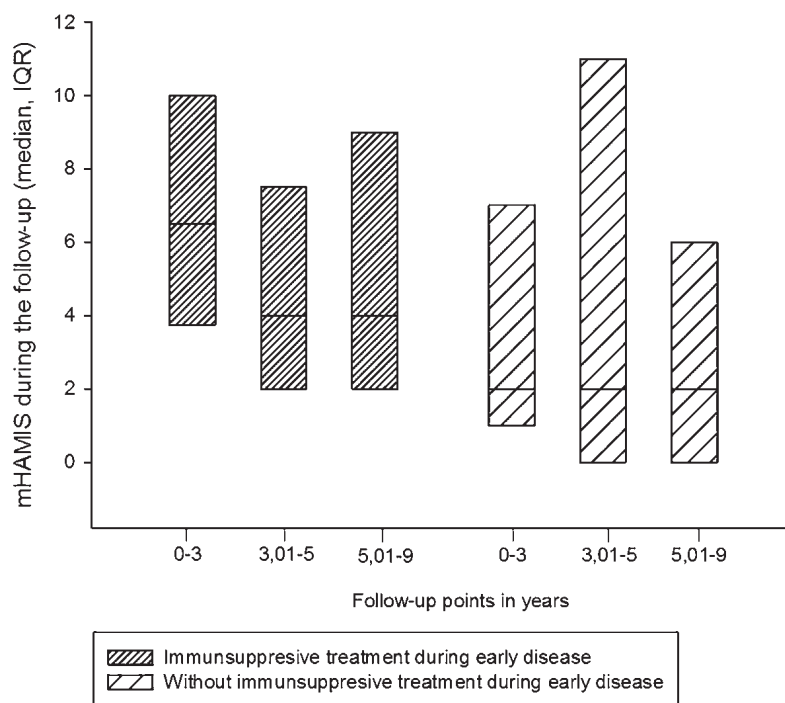


Figure 3. Longitudinal followup of mHAMIS in patients with and without immunosuppressive treatment in early disease. IQR: interquartile range; mHAMIS: modified Hand Mobility in Scleroderma test.

Table 3. Correlations at baseline and the change between baseline and followup (Δ values) between mHAMIS and mRSS hand, and serum COMP.

mHAMIS	mRSS hand r_s (p)			Serum COMP r_s (p)		
	Baseline	Change First Followup	Change Second Followup	Baseline	Change First Followup	Change Second Followup
Baseline	0.62 (< 0.001)			0.50 (0.001)		
Change first followup		0.44 (0.001)			0.45 (0.009)	
Change second followup			0.13 (ns)			0.16 (ns)

COMP: cartilage oligomeric matrix protein; mRSS: modified Rodnan skin score; mHAMIS: modified Hand Mobility in Scleroderma test; ns: not significant.

our study we found that patients with vascular lesions at baseline had higher mRSS compared to those without lesions. Patients with vascular lesions also had more limited hand mobility at followup. This is in line with studies by Mouthon, *et al*¹⁹ and Ennis, *et al*²⁰ showing that a high mRSS value was a risk factor for digital ulcers and that ulcers influence hand mobility and performance of daily activities. It is also worth noting that mHAMIS improved significantly during followup in patients with immunosuppressive treatment, but not in the group without treatment. Patients without treatment had a low mHAMIS in early disease, making it nearly impossible to improve. On the other hand, the mHAMIS did not get worse during followup, indicating mild disease in this

group, in contrast to mRSS hand, which improved regardless of this treatment. Our study was not powered or designed to study this in detail, but there are likely several explanations. One possibility is that the consequence of fibrosis is reduced and another is that articular involvement also influenced mobility and that this was reduced by the treatment. However, articular involvement was not recorded, which precludes drawing conclusions about the relationship between articular involvement and mHAMIS in our present study. But the relationship between hand mobility and articular involvement was demonstrated in an earlier study: Del Rosso, *et al*¹⁰ showed that patients with hand arthritis had higher HAMIS scores.

Our study is limited by the retrospective design based on data collected during routine clinical care. In addition, the percentage of dcSSc cases was low, although this reflects the composition of our cohort, especially considering that we study patients who survived the first years of disease. The prevalence of lcSSc in the Skåne region was 82% in December 2010²¹. The result concerning clinically relevant change should be interpreted with some caution because the cutoffs for mHAMIS and mRSS hand were determined through clinical experience only and not through statistical analysis. The lack of information on articular involvement makes it impossible to assess what effect this could have on the mHAMIS. Nevertheless, there is strong evidence that the mHAMIS to a large extent measures the fibrotic skin changes and specifically the impaired function caused by fibrosis.

In the early stages, the mHAMIS reflects disease activity and can in later stages be regarded as a measure of disease-related damage arising from the fibrotic process and vascular involvement. The mHAMIS test measures the fibrotic skin changes of importance for the patients' activities of daily life and is therefore suitable as an endpoint in followup examinations. However, to further investigate the responsiveness of mHAMIS, prospective interventional studies are needed.

REFERENCES

1. Steen VD, Medsger TA. Severe organ involvement in systemic sclerosis with diffuse systemic sclerosis. *Arthritis Rheum* 2000;43:2437-44.
2. Hesselstrand R, Scheja A, Åkesson A. Mortality and causes of death in a Swedish series of systemic sclerosis patients. *Ann Rheum Dis* 1998;57:682-6.
3. Cziráj L, Foeldvari I, Müller-Ladner U. Skin involvement in systemic sclerosis. *Rheumatology* 2008;47:44-5.
4. Clements PJ. Measuring disease activity and severity in scleroderma. *Curr Opin Rheumatol* 1995;7:517-21.
5. Clements P, Lachenbruch P, Siebold J, White B, Weiner S, Martin R, et al. Inter and intraobserver variability of total skin thickness score (modified Rodnan TSS) in systemic sclerosis. *J Rheumatol* 1995;22:1281-5.
6. Cziráj L, Nagy Z, Aringer M, Riemekasten G, Matucci-Cerinic M, Furst DE. The EUSTAR model for teaching and implementing the modified Rodnan skin score in systemic sclerosis. *Ann Rheum Dis* 2007;66:966-9.
7. Hesselstrand R, Kassner A, Heinegård D, Saxne T. COMP: a candidate molecule in the pathogenesis of systemic sclerosis with potential as a disease marker. *Ann Rheum Dis* 2008;67:1242-8.
8. Sandqvist G, Eklund M, Åkesson A, Nordenskiöld U. Daily activities and hand function in women with scleroderma. *Scand J Rheumatol* 2004;33:102-7.
9. Bassel M, Hudson M, Taillefer SS, Schier O, Baron M, Thombs BD. Frequency and impact of symptoms experienced by patients with systemic sclerosis: result from a Canadian National Survey. *Rheumatology* 2011;50:762-7.
10. Del Rosso A, Maddali-Bongi S, Sigismondi F, Miniati I, Bandinelli F, Matucci-Cerinic M. The Italian version of the Hand Mobility in Scleroderma (HAMIS) test: evidence for its validity and reliability. *Clin Exp Rheumatol* 2010;28 Suppl 62:S42-7.
11. Ingegneri F, Galbiati V, Boracchi P, Comi D, Gualtierotti R, Zeni S, et al. Reliability and validity of the Italian version of the hand functional disability scale in patients with systemic sclerosis. *Clin Rheumatol* 2008;27:742-9.
12. Hesselstrand R, Nilsson JÅ, Sandqvist G. Psychometric properties of the Swedish version of Scleroderma Health Assessment Questionnaire and Cochin Hand Index in patients with systemic sclerosis. *Scand J Rheumatol* 2013;42:317-24.
13. Sandqvist G, Eklund M. Hand Mobility in Scleroderma (HAMIS) test: the reliability of a novel hand function test. *Arthritis Care Res* 2000;13:369-74.
14. Sandqvist G, Eklund M. Validity of HAMIS: a test of hand mobility in scleroderma. *Arthritis Care Res* 2000;13:382-7.
15. Sandqvist G, Nilsson JÅ, Wuttge DM, Hesselstrand R. Development of a modified Hand Mobility in Scleroderma (HAMIS) test and its potential as an outcome measure in systemic sclerosis. *J Rheumatol* 2014;41:2186-92.
16. Sandqvist G, Hesselstrand R, Eberhardt K. A longitudinal follow-up of hand involvement and activities of daily living in early systemic sclerosis. *Scand J Rheumatol* 2009;18:1-7.
17. Masi AT, Rodnan GP, Medsger TA Jr, Altman RD, D'Angelo WA, Fries JF, et al. Preliminary criteria for the classification of systemic sclerosis (systemic sclerosis). Subcommittee to Systemic sclerosis Criteria of the American Rheumatism Association Diagnostic and Therapeutic Criteria Committee. *Arthritis Rheum* 1980;23:581-90.
18. Furst DE. Outcome measures in rheumatologic clinical trials and systemic sclerosis. *Rheumatology* 2008;47:29-30.
19. Mouthon L, Mestre-Stanislas C, Bérezné A, Rannou F, Guilpain P, Revel M, et al. Impact of digital ulcers on disability and health-related quality of life in systemic sclerosis. *Ann Rheum Dis* 2010;69:214-7.
20. Ennis H, Vali A, Wragg E, Taylor A, Moore T, Murray A, et al. A prospective study of systemic sclerosis-related digital ulcers: prevalence, location and functional impact. *Scand J Rheumatol* 2013;42:483-6.
21. Andréasson K, Saxne T, Bergknut C, Hesselstrand R, Englund M. Prevalence and incidence of systemic sclerosis in southern Sweden: population-based data with case ascertainment using the 1980 ARA criteria and the proposed ACR-EULAR classification criteria. *Ann Rheum Dis* 2014;73:1988-92.