

Low Socioeconomic Status (Measured by Education) and Outcomes in Systemic Sclerosis: Data from the Canadian Scleroderma Research Group

Samah Mansour, Ashley Bonner, Chayawee Muangchan, Marie Hudson, Murray Baron, Janet E. Pope, and The Canadian Scleroderma Research Group

ABSTRACT. Objective. In systemic lupus erythematosus, socioeconomic status (SES) affects outcomes. SES can modify outcomes by altering timing of access to care and adherence. It is unknown whether SES affects systemic sclerosis (SSc) outcomes. Disease can affect income and cause work disability, thus education (completed long before SSc onset) may be a proxy for SES.

Methods. The Canadian Scleroderma Research Group collects annual data on patients with SSc. Baseline data were used from a prevalent cohort. Education was stratified by whether participants completed high school. Regression models assessed effects of education on organ complications and survival.

Results. In our study, 1145 patients with SSc had 11.0 ± 9.5 years' disease duration; 86% were women, with a mean age of 55.4 ± 12.1 years. About one-quarter did not complete high school; this was more common in older patients ($p < 0.0001$), men ($p = 0.017$), those with lower income ($p < 0.0001$), the unemployed ($p < 0.054$), smokers ($p < 0.001$), where DLCO was $< 70\%$ predicted ($p = 0.009$), in those with arthritis ($p = 0.047$), higher Health Assessment Questionnaire-Disability Index ($p = 0.017$), elevated erythrocyte sedimentation rate ($p = 0.019$), median C-reactive protein ($p = 0.002$), proteinuria ($p = 0.016$), steroid use ever ($p = 0.039$), and those more likely to have died in followup (12.7% vs 8.0%; $p = 0.024$). However, adjusting for confounders, there was no effect of education on mortality; whereas mortality was related to age, diffuse cutaneous SSc (dcSSc) subset, elevated pulmonary arterial (PA) pressure on echocardiography, low forced vital capacity expressed as percentage of predicted, and proteinuria (similar in the dcSSc subset and in limited cutaneous SSc), mortality was increased in older patients, those with elevated PA pressure, and those with low DLCO.

Conclusion. Completing less education than high school was not associated with a worse prognosis in SSc after adjustment for confounding characteristics. (First Release Feb 15 2013; J Rheumatol 2013;40:447–54; doi:10.3899/jrheum.120570)

Key Indexing Terms:

EDUCATION
DISEASE ACTIVITY

SYSTEMIC SCLEROSIS
MORTALITY

SOCIOECONOMIC STATUS
DISEASE SEVERITY

People with lower socioeconomic status (SES) have worse health outcomes. There is abundant evidence that this association is strong in a variety of outcomes such as mortality and morbidity¹, and for several conditions including infection², coronary heart disease³, diabetes⁴,

cancer⁵, frailty⁶, obesity⁷, and chronic renal failure⁸. In addition, socioeconomic–demographic variables are important mediators of high levels of disease activity in systemic lupus erythematosus (SLE; an autoimmune connective tissue disease), and poor social support is

From Western University, Schulich School of Medicine and Dentistry, Department of Medicine, Division of Rheumatology, and the Department of Epidemiology and Biostatistics, St. Joseph's Health Care, London, Ontario; McMaster University, Hamilton, Ontario; Division of Rheumatology, Siriraj Hospital, Mahidol University, Bangkok, Thailand; and McGill University, Jewish General Hospital, Montreal, Quebec, Canada.

This study was supported by the Canadian Scleroderma Research Group, which is funded by the Canadian Institutes of Health Research (CIHR), the Scleroderma Society of Canada, the Scleroderma Society of Ontario, and the Cure Scleroderma Foundation. Dr. Mansour was supported by a CIHR net training grant. A. Bonner was supported in part by a studentship from Amgen Canada.

S. Mansour, MD, MSc, Western University, Schulich School of Medicine and Dentistry, Department of Medicine, Division of Rheumatology, St.

Joseph's Health Care, and Masters Student, Department of Epidemiology and Biostatistics; A. Bonner, BSc, McMaster University and Western University; C. Muangchan, MD, Western University, Schulich School of Medicine and Dentistry, Department of Medicine, Division of Rheumatology, St. Joseph's Health Care, and Division of Rheumatology, Siriraj Hospital, Mahidol University; M. Hudson, MD, FRCPC; M. Baron, MD, FRCPC, McGill University, Jewish General Hospital; J.E. Pope, MD, FRCPC, MPH, Western University, Schulich School of Medicine and Dentistry, Department of Medicine, Division of Rheumatology, St. Joseph's Health Care.

Address correspondence to Dr. J.E. Pope, St. Joseph's Health Care, 268 Grosvenor Street, London, Ontario N6A 4V2, Canada.
E-mail: janet.pope@sjhc.london.on.ca

Accepted for publication December 20, 2012.

consistently associated with SLE disease activity⁹. Lower SES is also associated with higher rates of death from SLE¹⁰.

Systemic sclerosis (SSc) is a multisystem connective tissue disease characterized by tissue thickening and fibrosis of the skin, often with involvement of internal organs including the gut, lungs, pulmonary arteries, heart, and kidneys¹¹. SSc can be divided into limited cutaneous SSc (lcSSc) and diffuse cutaneous SSc (dcSSc)¹². The epidemiology of SSc is not totally known¹³.

There are several measures of SES, such as education¹⁴, income¹⁵, employment status, and occupation¹⁶. The onset of SSc is often in middle age, so it usually occurs years after education is completed. One could speculate that low education level (a surrogate of SES that has occurred long before SSc diagnosis) may be associated with worse outcomes in SSc (more damage, disease activity, more severe organ involvement, and even death). Other measures of SES such as income and employment status are likely to be affected by SSc and thus lower SES can be the result of worse SSc if measuring employment and income. The goal of our study was to analyze the effect of education (as a proxy of SES) on SSc for disease activity, severity, disability, organ involvement, and mortality in a large database to determine whether low SES predicts worse outcomes in SSc.

MATERIALS AND METHODS

Study population and protocol. We used data obtained from a cohort study of patients with both prevalent and incident SSc who are followed annually at 20 centers within the Canadian Scleroderma Research Group (CSRG). Baseline data were mostly from longstanding patients who enrolled in the cohort. Data included a unique identification number, demographics (age, sex, marital status, SES measures such as education and household income, employment status, and ethnicity), disease duration since first non-Raynaud phenomenon (RP) symptoms, SSc type, disease manifestations [including the presence and severity of organ involvement such as chronic renal failure (serum creatinine, scleroderma renal crisis), functional class, presence of pulmonary arterial hypertension (PAH) and interstitial lung disease (ILD)], modified Rodnan skin score (mRSS) and tests [hemoglobin, erythrocyte sedimentation rate (ESR) and C-reactive protein (CRP), autoantibodies, pulmonary function tests (PFT), chest radiographs, echocardiograms, and high-resolution computed tomography (HRCT) chest scanning (where indicated)]. Standardized scales used in the CSRG include the SSc disease activity^{17,18,19,20}, SSc disease severity²¹, and function as measured by the HAQ-DI.

Ethics approval. All sites obtained ethics approval (centrally and/or locally) and all patients enrolled in the CSRG signed informed consent after receiving a letter of information in either English or French.

Statistical analyses. Statistical analyses were performed using IBM SPSS statistics software, version 20. Frequencies were expressed as the percentage and compared between groups by Fisher's exact test. Continuous variables were reported as the mean \pm SD and their differences were analyzed using independent t-tests. Outcomes of interest were specific organ involvement, skin fibrosis as measured by mRSS, pulmonary hypertension (PH; defined below), ILD, scleroderma renal crisis (SRC) ever, polymyositis by Bohan and Peter criteria^{22,23}, 28-joint swollen joint count (SJC) \geq 4, tender joint count (TJC) \geq 8, arthritis (SJC28 \geq 4 or TJC28 \geq 8), current digital ulcers, hemoglobin (g/l), creatinine (μ mol/l), creatine kinase

(U/l), ESR (mm/h), CRP (mg/dl), proteinuria (present or absent), autoantibodies (antinuclear antibody, anti-topoisomerase I, anticentromere, anti-RNA polymerase III), HAQ-DI (0–3), and mortality. PAH was present if right heart catheterization showed pulmonary arterial pressure (PAP) $>$ 25 mm Hg and a wedge pressure $<$ 15 mm Hg²⁴. PH was present if no right heart catheterization was done but the estimated systolic PAP (sPAP) on echocardiogram was $>$ 40 mm Hg²⁵. ILD was measured by chest radiograph, HRCT of the chest, and PFT.

Socioeconomic status was measured by education level ("did not complete high school" and "completed high school or more"). Other SES factors studied were annual household income before tax ($<$ \$30,000 CAN per year) and employment status (yes/no), but these were measured at first visit into the cohort and thus after disease onset, so income and work disability could not be predictive of SSc outcome. Education is only a part of total SES but was used as a surrogate because the exposure of "highest education level completed" would have occurred long before SSc onset and we wanted to determine whether education level was predictive of outcomes in SSc.

The associations between SES and SSc outcomes were studied initially with Spearman's correlation coefficients (ρ) and then logistic regression analyses between education level and other factors that were statistically significantly associated with education. The effect of education level on SSc mortality was studied overall and in the dcSSc and lcSSc groups, adjusting for length of followup and other confounders. Survival curves for patients with SSc divided by education level (did not complete vs completed high school) were constructed using Kaplan-Meier survival estimates (Figure 1) and log-rank (Mantel-Cox) tests. The analyses defined disease duration starting at the date of first non-RP symptom attributed to SSc to the last annual followup visit or the date of death. All variables in which p value was $<$ 0.05 between education groups were adjusted in the analyses if they were potential confounders. Survival analyses were redone using forced vital capacity (FVC) expressed as percentage of predicted and DLCO as percentage of predicted as continuous outcomes and removing inflammatory markers. The effect of education on the presence or absence of significant organ involvement (such as SRC ever, elevated creatinine, right heart catheterization-proven PAH, ILD requiring treatment) was explored using logistic regression models that adjusted for important variables that were related to the outcome such as dcSSc, autoantibodies, etc.

RESULTS

The study included 1145 patients with SSc; 86% (986) were women. Most of the patients were white (92%). The mean age was 55.4 ± 12.1 years (range 18–88 yrs) and the mean disease duration from onset of first non-RP symptom was 11.0 ± 9.5 years (range $<$ 1 yr to 54 yrs). Table 1 shows the baseline characteristics of the entire sample, and a comparison between patients who did not and those who did complete high school, and Spearman's correlations and p values. Having less education was significantly more common among older patients ($p < 0.0001$), men ($p = 0.017$), patients with lower income ($p < 0.0001$), less employment ($p < 0.0001$), current smoker ($p = 0.001$), lower DLCO percentage predicted ($p = 0.019$), DLCO $<$ 70% predicted ($p = 0.009$), SJC \geq 4 ($p = 0.013$), higher HAQ-DI ($p = 0.017$), higher ESR ($p = 0.019$), elevated ESR $>$ 20 mm/h ($p = 0.0001$), higher median CRP ($p = 0.002$), proteinuria ($p = 0.016$), corticosteroid use ($p = 0.039$), and death (12.7% vs 8.0%; $p = 0.018$).

For the outcomes of interest, by univariate analyses in patients with SSc, having less education was a predictor of DLCO $<$ 70% predicted (OR 1.512, 95% CI 1.117–2.047),

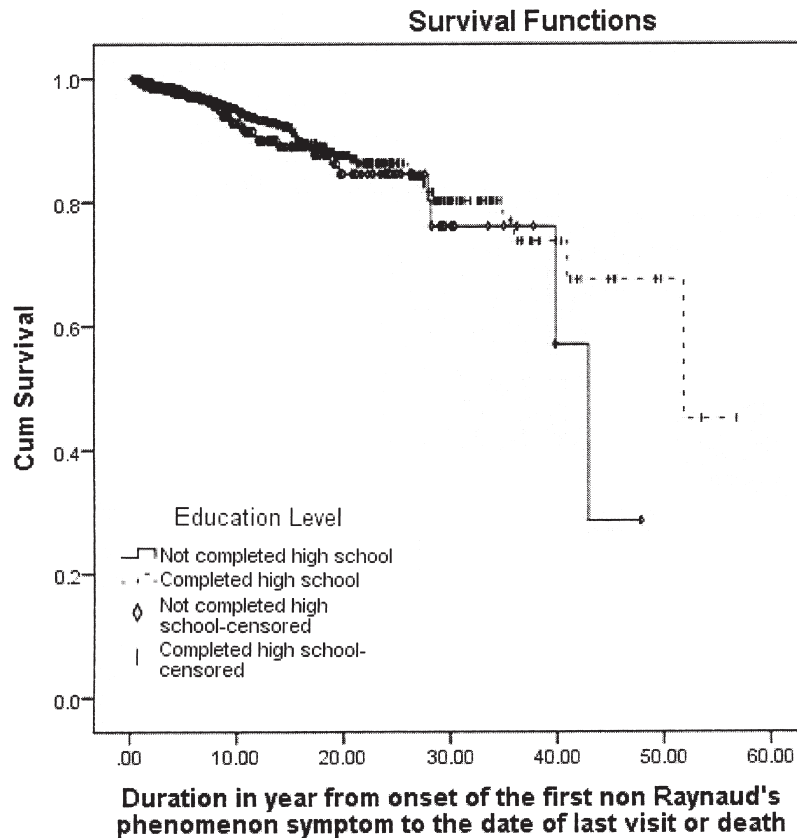


Figure 1. Kaplan-Meier curves for survival between patients with different education levels (did not complete high school vs completed high school or higher). Survival was not different in those with low education at baseline entry into the Canadian Scleroderma Research Group database ($p = 0.297$).

SJC28 ≥ 4 (OR 2.086, 95% CI 1.206-3.609), elevated ESR > 20 mm/h (OR 1.811, 95% CI 1.341-2.447), proteinuria (OR 1.896, 95% CI 1.144-3.143), corticosteroid use (OR 1.489, 95% CI 1.034-2.144), and death (OR 1.677, 95% CI 1.088-2.585). There was no effect of education on various organ outcomes such as ILD, PH, or SRC when adjusting for variables known to be associated with each organ involvement (such as topoiso­merase I and dcSSc subset with ILD, RNA polymerase III and dcSSc with SRC, etc.; data not shown).

Habits that could be associated with education. Smoking was more common in lower education ($p = 0.001$) and lower education predicted smoking in patients with SSc (OR 1.872, 95% CI 1.319-2.658) by univariate analysis, whereas the mean weekly alcohol consumption was not different between the 2 education groups.

Effect of education on SSc mortality in all patients (overall), and dcSSc and lcSSc subsets. Table 2 shows the multivariate analyses in SSc survival for the 2 education groups (overall, and in subsets dcSSc and lcSSc). After adjustment for age and other significant variables, low education level lost its significance for SSc, and in the dcSSc and lcSSc groups.

PFT measures were studied as dichotomous and continuous for FVC and DLCO. In addition, analyses were performed with and without an elevated ESR because ESR could be related to active organ involvement. Survival curves for patients entering the CSRG separated by education level did not show significant differences in survival between the education levels ($p = 0.297$). The survival curves associated with death and adjusted for length of followup are not shown. Similarly, education was not significantly associated with survival in adjusted analyses in the lcSSc and dcSSc subsets.

DISCUSSION

Our study demonstrated that low education defined by “did not complete high school” as a proxy of SES did not affect outcomes after adjustment for other factors associated with less education such as worse pulmonary function (FVC in overall and dcSSc subsets and DLCO in lcSSc subset), arthritis, proteinuria, higher systemic inflammation measured by elevated ESR and CRP, and more corticosteroid use. In lcSSc, survival was less in those with a low DLCO, which is indicative of pulmonary fibrosis²⁶,

Table 1. Comparison of demographic and disease characteristics between education levels (less than high school vs high school or beyond) for patients with systemic sclerosis from the Canadian Scleroderma Research Group (CSRG) database.

| Characteristic | Total | Education < High School | Education ≥ High School | p | Spearman ρ | p |
|---|-----------------|----------------------------|----------------------------|----------|------------|---------|
| N (% of total group) | 1145 (100) | 292/1058 (27.6) | 766/1058 (72.4) | — | — | — |
| Age at baseline visit, yrs, mean ± SD | 55.39 ± 12.13 | 60.3 ± 10.84 | 53.61 ± 12 | < 0.0001 | −0.263 | 0.0001 |
| Women (%) | 986/1145 (86.1) | 239/292 (81.8) | 672/766 (87.7) | 0.017* | 0.076 | 0.013* |
| Disease duration from onset of RP to baseline visit, yrs, mean ± SD | 14.70 ± 12.33 | 14.50 ± 12.36 | 14.74 ± 12.11 | 0.785 | — | — |
| Disease duration from onset of first non-RP manifestation to baseline visit, yrs, mean ± SD | 11.00 ± 9.50 | 11.56 ± 9.43 | 10.78 ± 9.34 | 0.235 | — | — |
| Diffuse cutaneous subset (%) | 396/1043 (38) | 88/264 (33.3) | 285/711 (40.1) | 0.054 | 0.062 | 0.054 |
| Disease duration ≤ 3 yrs (%) | 244/1102 (22.1) | 61/282 (21.6) | 164/746 (22.0) | 0.933 | — | — |
| Early diffuse cutaneous subset (%) | 117/1100 (10.6) | 28/281 (10.0) | 81/747 (10.8) | 0.734 | — | — |
| Early limited cutaneous subset (%) | 109/1094 (10) | 29/280 (10.4) | 74/743 (10.0) | 0.907 | — | — |
| White (%) | 953/1036 (92.0) | 262/280 (93.6) | 687/749 (91.7) | 0.362 | — | — |
| Asian (%) | 39/825 (4.7) | 4/223 (1.8) | 34/595 (5.7) | 0.015* | 0.083 | 0.018* |
| Black (%) | 14/818 (1.7) | 3/223 (1.3) | 11/588 (1.9) | 0.768 | — | — |
| Aboriginal (%) | 55/1063 (5.2) | 21/289 (7.3) | 33/766 (4.3) | 0.060 | 0.060 | 0.052 |
| Married (%) | 732/1061 (69.0) | 119/292 (68.2) | 531/765 (69.4) | 0.710 | — | — |
| Working (%) | 432/918 (47.1) | 75/238 (31.5) | 356/672 (53.0) | 0.0001* | 0.189 | 0.0001* |
| Disabled/sick leave (%) | 230/871 (26.4) | 66/242 (27.3) | 163/622 (26.2) | 0.797 | — | — |
| Unemployed (%) | 52/831 (6.3) | 21/231 (9.1) | 31/593 (5.2) | 0.054 | −0.071 | 0.041* |
| Yearly household income < \$30,000 CAN | 262/951 (27.5) | 116/250 (46.4) | 141/694 (20.3) | 0.0001* | −0.259 | 0.0001* |
| Current smoker (%) | 161/1061 (15.2) | 63/292 (21.6) | 98/765 (12.8) | 0.001* | −0.109 | 0.0001* |
| Mean no. drinks per wk (%) | 2.5 (4.9) | 2.4 (4.2) (258) | 2.6 (5.2) (674) | 0.679 | — | — |
| mRSS | 10.04 ± 9.54 | 9.52 ± 9.14 | 10.38 ± 9.79 | 0.202 | 0.027 | 0.379 |
| mRSS > 20 (%) | 155/1102 (14.1) | 32/282 (11.3) | 116/748 (15.5) | 0.091 | — | — |
| sPAP, mm Hg | 36.91 ± 16.23 | 37.60 ± 15.54 | 36.75 ± 16.73 | 0.551 | — | — |
| Elevated sPAP > 40 mm Hg (%) | 172/668 (25.7) | 50/183 (27.3) | 115/457 (25.2) | 0.617 | — | — |
| Moderate to large pericardial effusion (%) | 16/949 (1.7) | 4/243 (1.6) | 10/653 (1.5) | 1.000 | — | — |
| Lung fibrosis (%) | 228/1062 (21.5) | 65/274 (23.7) | 150/717 (20.9) | 0.344 | — | — |
| Lung fibrosis in those with HRCT (%) | 279/889 (31.4) | 83/230 (36.1) | 182/599 (30.4) | 0.134 | — | — |
| HRCT chest; honeycomb appearance (%) | 57/262 (21.8) | 13/73 (17.8) | 40/178 (22.5) | 0.497 | — | — |
| TLC, % predicted | 93.12 ± 19.11 | 92.98 ± 20.11 | 93.12 ± 18.61 | 0.925 | — | — |
| FVC, % predicted | 90.84 ± 19.75 | 89.03 ± 19.5 | 91.52 ± 19.87 | 0.094 | 0.060 | 0.074 |
| DLCO, % predicted | 70.65 ± 21.96 | 67.74 ± 22.32 | 71.72 ± 21.81 | 0.019* | 0.096 | 0.005* |
| % with TLC < 80% predicted | 207/899 (23.0) | 64/236 (27.1) | 131/613 (21.4) | 0.084 | 0.061 | 0.075 |
| % with FVC < 70% predicted | 125/946 (13.2) | 40/241 (16.6) | 76/654 (11.6) | 0.056 | −0.066 | 0.049* |
| % with DLCO < 70% predicted | 439/917 (47.9) | 128/231 (55.4) | 286/634 (45.1) | 0.009* | −0.091 | 0.007* |
| SRC (%) | 48/1121 (4.3) | 10/286 (3.5) | 38/760 (5.0) | 0.407 | — | — |
| Polymyositis by Bohan & Peter criteria (%) | 15/1105 (1.4) | 3/282 (1.1) | 12/744 (1.6) | 0.771 | — | — |
| Tendon friction rub (%) | 163/1110 (14.7) | 42/282 (14.9) | 111/754 (14.7) | 0.922 | — | — |
| 28 SJC ≥ 4 (%) | 59/1096 (5.4) | 24/280 (8.6) | 32/744 (4.3) | 0.013* | −0.084 | 0.007* |
| Arthritis (SJC ≥ 4 or TJC ≥ 8; %) | 94/1096 (8.6) | 33/280 (11.8) | 57/744 (7.7) | 0.047* | −0.065 | 0.038* |
| Current digital ulcer (%) | 93/1121 (8.3) | 22/287 (7.7) | 64/757 (8.5) | 0.801 | — | — |
| Digital gangrene/necrosis (%) | 12/1123 (1.1) | 1/287 (0.3) | 11/759 (1.4) | 0.197 | — | — |
| Digital loss/amputation (%) | 66/1124 (5.9) | 14/288 (4.9) | 47/759 (6.2) | 0.463 | — | — |
| HAQ-DI (0–3) | 0.81 ± 0.71 | 0.9 ± 0.67 | 0.78 ± 0.72 | 0.017* | −0.090 | 0.004* |
| Hemoglobin (g/l) | 13.59 ± 1.24 | 14.13 ± 1.54 | 13.22 ± 0.91 | 0.171 | — | — |
| Serum creatinine (μmol/l) | 81.70 ± 51.31 | 85.05 ± 40.25 | 81.07 ± 56.56 | 0.291 | — | — |
| Creatine kinase (μ/l) | 95.57 ± 86.31 | 95.08 ± 83.21 | 95.58 ± 86.29 | 0.938 | — | — |
| ESR, mm/h | 21.90 ± 21.03 | 24.53 ± 19.73 | 20.81 ± 21.52 | 0.019* | −0.135 | 0.0001* |
| Elevated ESR > 20 mm/h (%) | 353/923 (38.2) | 118/244 (48.4) | 212/622 (34.1) | 0.0001* | −0.132 | 0.0001* |
| CRP, median (mg/l) | 3.60 | 4.30 | 3.40 | 0.002* | −0.106 | 0.002* |
| CRP, mean (mg/l) | 9.54 ± 19.98 | 12.20 ± 25.05 | 8.78 ± 18.35 | 0.055 | — | — |
| Elevated CRP > 8 mg/l (%) | 235/913 (25.7) | 69/239 (28.9) | 150/613 (24.5) | 0.191 | — | — |
| ANA (%) | 959/1020 (95.0) | 253/267 (94.8) | 655/689 (95.1) | 0.869 | — | — |
| ACA (%) | 353/1020 (34.6) | 93/267 (34.8) | 236/689 (34.3) | 0.880 | — | — |
| Antitopoisomerase I (Scl70; %) | 153/1021 (15.0) | 37/268 (13.8) | 107/689 (15.5) | 0.547 | — | — |
| Anti-RNA polymerase III (%) | 144/1021 (14.1) | 39/268 (14.6) | 102/689 (14.8) | 1.000 | — | — |

Table 1. Continued.

| Characteristic | Total | Education < High School | Education ≥ High School | p | Spearman ρ | p |
|--|-----------------|----------------------------|----------------------------|--------|------------|--------|
| Proteinuria (%) | 72/939 (7.7) | 28/243 (11.5) | 41/638 (6.4) | 0.016* | −0.085 | 0.012* |
| Corticosteroids ever-use (%) | 161/1124 (14.3) | 53/288 (18.4) | 100/760 (13.2) | 0.039* | −0.066 | 0.032* |
| Immunomodulator ever-use (%) | 275/1124 (24.5) | 69/288 (24.0) | 195/760 (25.7) | 0.633 | — | — |
| Dead (%) | 107/1145 (9.3) | 37/292 (12.7) | 61/766 (8.0) | 0.024* | −0.073 | 0.018* |
| Duration from baseline visit to death, yrs | 1.75 ± 1.26 | 1.77 ± 1.04 | 1.77 ± 1.35 | 0.974 | — | — |
| Duration from onset of RP to death, yrs | 16.34 ± 12.65 | 16.95 ± 11.6 | 14.99 ± 12.29 | 0.464 | — | — |
| Duration from onset of first non-RP symptom to death, yrs | 13.24 ± 11.25 | 12.87 ± 8.94 | 12.95 ± 12.01 | 0.973 | — | — |

* $p < 0.05$. RP: Raynaud phenomenon; mRSS: modified Rodnan skin score; sPAP: systolic pulmonary arterial pressure; HRCT: high-resolution computed tomography; TLC: total lung capacity; FVC: forced vital capacity; SRC: scleroderma renal crisis; SJC: swollen joint count; TJC: tender joint count; HAQ-DI: Health Assessment Questionnaire-Disability Index; ESR: erythrocyte sedimentation rate; CRP: C-reactive protein; ANA: antinuclear antibody; ACA: anticentromere antibodies.

Table 2. Multivariate analysis of dead versus alive in SSc (overall) and in dcSSc and lcSSc subsets. Data are from the univariate models comparing dead versus alive, adjusting for followup time for overall and subsets (data not shown). Education did not appear in the model as statistically significant.

| Significant Predictors | Data with All Significant Variables in the Regression Analysis OR (95% CI); p | Data Excluding ESR and Using % FVC and DLCO % Predicted as Continuous Variables OR (95% CI); p |
|--------------------------------|---|---|
| Overall | | |
| Age | 1.066 (1.030–1.103); 0.0001 | 1.067 (1.032–1.102); 0.0001 |
| dcSSc | 3.817 (1.805–8.069); 0.0001 | 3.076 (1.499–6.310); 0.002 |
| sPAP > 40 mm Hg | 6.330 (3.042–13.172); 0.0001 | 5.025 (2.450–10.305); 0.0001 |
| FVC, % predicted < 70 | NS | — |
| FVC, % predicted (continuous) | — | 0.983 (0.066–1.000); 0.048 |
| Proteinuria | 3.295 (1.288–8.426); 0.013 | 2.700 (1.115–6.542); 0.028 |
| dcSSc subset | | |
| Age | 1.056 (1.010–1.103); 0.016 | 1.059 (1.016–1.104); 0.007 |
| sPAP > 40 mm Hg | 3.735 (1.289–10.826); 0.015 | 4.016 (1.504–10.720); 0.006 |
| FVC, % predicted < 70 | 3.039 (1.008–9.163); 0.048 | — |
| FVC, % predicted (continuous) | — | 0.972 (0.949–0.997); 0.027 |
| ESR > 20 mm/h | 3.001 (1.011–8.905); 0.048 | — |
| Proteinuria | 3.978 (1.110–14.255); 0.034 | 4.583 (1.449–14.500); 0.010 |
| lcSSc subset | | |
| Age | 1.076 (1.014–1.140); 0.015 | 1.080 (1.019–1.146); 0.010 |
| sPAP > 40 mm Hg | 4.101 (1.301–12.924); 0.016 | 3.515 (1.064–11.611); 0.039 |
| DLCO, % predicted < 70 | 6.162 (1.306–29.083); 0.022 | — |
| DLCO, % predicted (continuous) | — | 0.961 (0.933–0.991); 0.010 |

SSc: systemic sclerosis; dcSSc: diffuse cutaneous SSc; lcSSc: limited cutaneous SSc; ESR: erythrocyte sedimentation rate; FVC: forced vital capacity; sPAP: systolic pulmonary arterial pressure. NS: nonsignificant.

pulmonary vasculopathy^{27,28}, or both, or smoking. Impaired diffusing capacity has also been linked to altered nailfold capillary microscopy findings in SSc²⁹. Proteinuria that has been reported in 25% of patients with SSc is a predictor of glomerular permeability³⁰ and has been previously shown to be related to worse 5-year survival in SSc³¹. Elevated ESR³¹ and CRP³² occur in those with SSc disease activity and poor survival. Increased CRP is also correlated with arthritis in SSc^{33,34}.

It may be that behaviors and attitudes related more in low education compared to higher education may be related to

different outcomes, but with adjustment for confounders (factors associated with education), the effect of education on survival and other outcomes is not seen.

In SLE, lower SES is associated with more disease activity, organ damage, worse physical function, and work disability^{35,36,37}. Abnormal illness-related behavior^{9,37,38,39}, low self-efficacy for disease management, less knowledge about SLE, and less personal control over one's health are associated with higher disease activity, damage, and worse physical and mental function in SLE^{36,40}.

However, low education in SSc lost its significance for

poor outcomes in SSc. Overall, the dcSSc subset has a worse prognosis^{41,42,43,44,45}. In the lcSSc subset, lower education was correlated with death in univariate correlations but did not retain significance after adjustment for important significant variables (data not shown). This finding could imply that behaviors and/or attitudes related to poor education might not show a significant effect on disease manifestations and organ damage in dcSSc, but they could modify outcomes in the less-severe subset (lcSSc). However, this was not the case in lcSSc after multivariate analyses.

Our study included mostly whites, so an interaction between certain ethnicities and education could not be ascertained. For instance, Aboriginal people in our study had lower education. In US studies, African Americans have more dcSSc subset⁴⁶, PAH⁴⁶, digital ulcers⁴⁶, early pulmonary involvement⁴⁷, and later hospitalization and death⁴⁸.

Epidemiologic data have established cigarette smoking as an important environmental factor interacting with the shared epitope and increasing the risk of rheumatoid arthritis⁴⁹, and smoking is more common in connective tissue diseases. Smoking in SSc may worsen disease severity^{50,51}. Smoking was more common in the low education group.

After adjustment for variable length of followup, SSc mortality was related to older age, dcSSc, sPAP > 40 mm Hg, low FVC, and proteinuria, and these findings are similar to those of other studies^{52,53,54,55,56,57}. In patients with dcSSc, the results were similar. In the lcSSc subset, low DLCO (not FVC) was associated with mortality. These results are in agreement with other studies^{52,53,54,56,57,58,59,60}.

Although the sample size was large, there are some limitations of our study. The CSRG is a prevalent and incident cohort that initially enrolled patients with long disease duration, so the disease could have been less severe (a survivor cohort). In addition, the database could be biased because only outpatients were enrolled, and severely ill patients may be less apt to be approached (they may be too sick to complete all the forms), which could underestimate those with the worst outcomes. We also did not compare the education levels of the patients with SSc to the regional population matched for age and sex, so we cannot say whether there is more lower education in SSc than expected in the general population (and this was not the purpose of our study). We can conclude that, with adjustment for other important factors, education is not associated with SSc outcomes. There is a lack of information on temporal relationships because of the way the questions were asked. Data were collected by many centers throughout Canada, which allows the results to be more generalizable, but minorities may be underrepresented. The definition of SES as solely related to education is a limitation, but was chosen because other SES measures would be affected by SSc and

we were looking for a clear temporal relationship between SES (as measured by education) occurring long before SSc onset. The patients in the CSRG database have universal healthcare, but it does not apply to medications in many Canadian provinces.

Completion of education that occurred prior to SSc onset was used as a proxy for SES in our study. Low education was associated with worse outcomes but after adjustment for known risk factors/confounders, low education was not associated with poor outcomes in SSc.

APPENDIX

List of CSRG collaborators: M. Baron, Montreal, Quebec; M. Hudson, Montreal, Quebec; J. Markland, Saskatoon, Saskatchewan; P. Docherty, Moncton, New Brunswick; M. Fritzler, Advanced Diagnostics Laboratory, Calgary, Alberta; N. Jones, Edmonton, Alberta; E. Kaminska, Hamilton, Ontario; N. Khalidi, Hamilton, Ontario; S. Ligier, Montreal, Quebec; A. Masetto, Sherbrooke, Quebec; J-P. Mathieu, Montreal, Quebec; J. Pope, London, Ontario; D. Robinson, Winnipeg, Manitoba; D. Smith, Ottawa, Ontario; E. Sutton, Halifax, Nova Scotia.

REFERENCES

1. Goldman DP, Smith JP. Can patient self-management help explain the SES health gradient? *Proc Natl Acad Sci USA* 2002; 99:10929-34.
2. Saha SK, Saha S, Shakur S, Hanif M, Habib MA, Datta SK, et al. Community-based cross-sectional seroprevalence study of hepatitis A in Bangladesh. *World J Gastroenterol* 2009;15:4932-7.
3. Avendano M, Kunst AE, Huisman M, Lenthe FV, Bopp M, Regidor E, et al. Socioeconomic status and ischemic heart disease mortality in 10 western European populations during the 1990s. *Heart* 2006;92:461-7.
4. Tang M, Chen Y, Krewski D. Gender-related differences in the association between socioeconomic status and self-reported diabetes. *Int J Epidemiol* 2003;32:381-5.
5. Braaten T, Weiderpass E, Lund E. Socioeconomic differences in cancer survival: The Norwegian Women and Cancer Study. *BMC Public Health* 2009;9:178.
6. Szanton SL, Seplaki CL, Thorpe RJ Jr, Allen JK, Fried LP. Socioeconomic status is associated with frailty: The Women's Health and Aging Studies. *J Epidemiol Community Health* 2010;64:63-7.
7. Wang MC, Kim S, Gonzalez AA, MacLeod KE, Winkleby MA. Socioeconomic and food-related physical characteristics of the neighborhood environment are associated with body mass index. *J Epidemiol Community Health* 2007;61:491-8.
8. Forel CM, Ejerblad E, Fryzek JP, Lambe M, Lindblad P, Nyrén O, et al. Socio-economic status and chronic renal failure: A population-based case-control study in Sweden. *Nephrol Dial Transplant* 2003;18:82-8.
9. Alarcón GS, Calvo-Alén J, McGwin G Jr, Uribe AG, Toloza SM, Roseman JM, et al; LUMINA Study Group. Systemic lupus erythematosus in a multiethnic cohort: LUMINA XXXV. Predictive factors of high disease activity over time. *Ann Rheum Dis* 2006;65:1168-74.
10. Ward MM, Pyun E, Studenski S. Long-term survival in systemic lupus erythematosus. Patient characteristics associated with poorer outcomes. *Arthritis Rheum* 1995;38:274-83.
11. Bernatsky S, Joseph L, Pineau CA, Belisle P, Hudson M, Clarke AE. Scleroderma prevalence: Demographic variations in a population-based sample. *Arthritis Rheum* 2009;6:400-4.
12. LeRoy EC, Black C, Fleischmajer R, Jablonska S, Krieg T,

- Medsgers TA Jr, et al. Scleroderma (systemic sclerosis): Classification, subsets and pathogenesis. *J Rheumatol* 1988; 15:202-5.
13. Kernéis S, Boëlle PY, Grais RF, Pavillon G, Jougla E, Flahault A, et al. Mortality trends in systemic sclerosis in France and USA, 1980-1998: An age-period-cohort analysis. *Eur J Epidemiol* 2010;25:55-61.
14. Winkleby MA, Jatulis DE, Frank E, Fortmann SP. Socioeconomic status and health: How education, income, and occupation contribute to risk factors for cardiovascular disease. *Am J Public Health* 1992;82:816-20.
15. Braveman PA, Cubbin C, Egerter S, Chideya S, Marchi KS, Metzler M, et al. Socioeconomic status in health research: One size does not fit all. *JAMA* 2005;294:2879-88.
16. Rodriguez E. Keeping the unemployed healthy: The effect of means-tested and entitlement benefits in Britain, Germany, and the United States. *Am J Public Health* 2001;91:1403-11.
17. Valentini G, Della Rossa A, Bombardieri S, Bencivelli W, Silman AJ, D'Angelo S, et al. European multicentre study to define disease activity criteria for systemic sclerosis. II. Identification of disease activity variables and development of preliminary activity indexes. *Ann Rheum Dis* 2001;60:592-8.
18. Valentini G, Bencivelli W, Bombardieri S, D'Angelo S, Della Rossa A, Silman AJ, et al. European Scleroderma Study Group to define disease activity criteria for systemic sclerosis. III. Assessment of the construct validity of the preliminary activity criteria. *Ann Rheum Dis* 2003;62:901-3.
19. Valentini G, D'Angelo S, Della Rossa A, Bencivelli W, Bombardieri S. European Scleroderma Study Group to define disease activity criteria for systemic sclerosis. IV. Assessment of skin thickening by modified Rodnan skin score [letter]. *Ann Rheum Dis* 2003;62:904-5.
20. Valentini G, Silman AJ, Veale D. Assessment of disease activity. *Clin Exp Rheumatol* 2003;21 Suppl:S39-41.
21. Medsgers TA Jr, Bombardieri S, Czirjak L, Scorza R, Della Rossa A, Bencivelli W. Assessment of disease severity and prognosis. *Clin Exp Rheumatol* 2003;21 Suppl:S42-6.
22. Bohan A, Peter JB. Polymyositis and dermatomyositis (second of two parts). *N Engl J Med* 1975;292:403-7.
23. Bohan A, Peter JB. Polymyositis and dermatomyositis (first of two parts). *N Engl J Med* 1975;292:344-7.
24. Mukerjee D, St. George D, Coleiro B, Knight C, Denton CP, Davar J, et al. Prevalence and outcome in systemic sclerosis associated pulmonary arterial hypertension: Application of a registry approach. *Ann Rheum Dis* 2003;62:1088-93.
25. Meune C, Avouac J, Wahbi K, Cabanes L, Wipff J, Mouthon L, et al. Cardiac involvement in systemic sclerosis assessed by tissue-Doppler echocardiography during routine care: A controlled study of 100 consecutive patients. *Arthritis Rheum* 2008;58:1803-9.
26. Steen VD, Owens GR, Fino GJ, Rodnan GP, Medsgers TA Jr. Pulmonary involvement in systemic sclerosis (scleroderma). *Arthritis Rheum* 1985;28:759-67.
27. Stupi AM, Steen VD, Owens GR, Barnes EL, Rodnan GP, Medsgers TA Jr. Pulmonary hypertension in the CREST syndrome variant of systemic sclerosis. *Arthritis Rheum* 1986;29:515-24.
28. Allano Y, Borderie D, Avouac J, Zerkak D, Meune C, Hachulla E, et al. High N-terminal pro-brain natriuretic peptide levels and low diffusing capacity for carbon monoxide as independent predictors of the occurrence of precapillary pulmonary arterial hypertension in patients with systemic sclerosis. *Arthritis Rheum* 2008;58:284-91.
29. Groen H, Wichers G, ter Borg EJ, van der Mark TW, Wouda AA, Kallenberg CG. Pulmonary diffusing capacity disturbances are related to nailfold capillary changes in patients with Raynaud's phenomenon with and without an underlying connective tissue disease. *Am J Med* 1990;89:34-41.
30. Shanmugam VK, Steen VD. Renal disease in scleroderma: An update on evaluation, risk stratification, pathogenesis and management. *Curr Opin Rheumatol* 2012;24:669-76.
31. Franssen J, Popa-Diaconu D, Hesselstrand R, Carreira P, Valentini G, Beretta L, et al. Clinical prediction of 5-year survival in systemic sclerosis: Validation of a simple prognostic model in EUSTAR centres. *Ann Rheum Dis* 2011;70:1788-92.
32. Muangchan C, Harding S, Khimdas S, Bonner A; Canadian Scleroderma Research group, Baron M, et al. Association of C-reactive protein with high disease activity in systemic sclerosis: Results from the Canadian Scleroderma Research Group. *Arthritis Care Res* 2012;64:1405-14.
33. Cuomo G, Zappia M, Abignano G, Iudici M, Rotondo A, Valentini G. Ultrasonographic features of the hand and wrist in systemic sclerosis. *Rheumatology* 2009;48:1414-7.
34. Elhai M, Guerini H, Bazeli R, Avouac J, Freire V, Drapé JL, et al. Ultrasonographic hand features in systemic sclerosis and correlates with clinical, biologic, and radiographic findings. *Arthritis Care Res* 2012;64:1244-9.
35. Sutcliffe N, Clarke AE, Gordon C, Farewell V, Isenberg DA. The association of socio-economic status, race, psychosocial factors and outcome in patients with systemic lupus erythematosus. *Rheumatology* 1999;38:1130-7.
36. Karlson EW, Daltroy LH, Lew RA, Wright EA, Partridge AJ, Fossel AH, et al. The relationship of socioeconomic status, race, and modifiable risk factors to outcomes in patients with systemic lupus erythematosus. *Arthritis Rheum* 1997;40:47-56.
37. Alarcón GS, McGwin G Jr, Sanchez ML, Bastian HM, Fessler BJ, Friedman AW, et al. Systemic lupus erythematosus in three ethnic groups. XIV. Poverty, wealth, and their influence on disease activity. *Arthritis Rheum* 2004;51:73-7.
38. Alarcón GS, Roseman J, Bartolucci AA, Friedman AW, Moulds JM, Goel N, et al. Systemic lupus erythematosus in three ethnic groups: II. Features predictive of disease activity early in its course. LUMINA Study Group. Lupus in minority populations, nature versus nurture. *Arthritis Rheum* 1998;41:1173-80.
39. Alarcón GS, McGwin G Jr, Bartolucci AA, Roseman J, Lisse J, Fessler BJ, et al. Systemic lupus erythematosus in three ethnic groups. IX. Differences in damage accrual. *Arthritis Rheum* 2001;44:2797-806.
40. Bae SC, Hashimoto H, Karlson EW, Liang MH, Daltroy LH. Variable effects of social support by race, economic status, and disease activity in systemic lupus erythematosus. *J Rheumatol* 2001;28:1245-51.
41. Czirjak L, Nagy Z, Szegedi G. Survival analysis of 118 patients with systemic sclerosis. *J Intern Med* 1993;234:335-7.
42. Hesselstrand R, Scheja A, Akesson A. Mortality and causes of death in a Swedish series of systemic sclerosis patients. *Ann Rheum Dis* 1998;57:682-6.
43. Jacobsen S, Halberg P, Ullman S. Mortality and causes of death of 344 Danish patients with systemic sclerosis (scleroderma). *Br J Rheumatol* 1998;37:750-5.
44. Clements PJ, Hurwitz EL, Wong WK, Seibold JR, Mayes M, White B, et al. Skin thickness score as a predictor and correlate of outcome in systemic sclerosis: High-dose versus low dose penicillamine trial. *Arthritis Rheum* 2000;43:2445-54.
45. Steen VD, Medsgers TA Jr. Severe organ involvement in systemic sclerosis with diffuse scleroderma. *Arthritis Rheum* 2000;43:2437-44.
46. Reveille JD, Fischbach M, McNearney T, Friedman AW, Aguilar MB, Lisse J, et al; GENISOS Study Group. Systemic sclerosis in 3 US ethnic groups: A comparison of clinical, sociodemographic, serologic, and immunogenetic determinants. *Semin Arthritis Rheum* 2001;30:332-46.
47. McNearney TA, Reveille JD, Fischbach M, Friedman AW, Lisse

- JR, Goel N, et al. Pulmonary involvement in systemic sclerosis: Associations with genetic, serologic, sociodemographic, and behavioral factors. *Arthritis Rheum* 2007;57:318-26.
48. Nietert PJ, Silver RM, Mitchell HC, Shaftman SR, Tilley BC. Demographic and clinical factors associated with in-hospital death among patients with systemic sclerosis. *J Rheumatol* 2005; 32:1888-92.
 49. Kazantseva M, Highton J, Stamp LK, Hessian PA. Dendritic cells provide a potential link between smoking and inflammation in rheumatoid arthritis. *Arthritis Res Ther* 2012;14:R208.
 50. Chaudhary P, Chen X, Assassi S, Gorlova O, Draeger H, Harper BE, et al. Cigarette smoking is not a risk factor for systemic sclerosis. *Arthritis Rheum* 2011;63:3098-102.
 51. Khimdas S, Harding S, Bonner A, Zummer B, Baron M, Pope J; Canadian Scleroderma Research Group. Associations with digital ulcers in a large cohort of systemic sclerosis: Results from the Canadian Scleroderma Research Group registry. *Arthritis Care Res* 2011;63:142-9.
 52. Simeon CP, Armadans L, Fonollosa V, Vilardell M, Candell J, Tolosa C, et al. Survival prognostic factors and markers of morbidity in Spanish patients with systemic sclerosis. *Ann Rheum Dis* 1997;56:723-8.
 53. Bryan C, Knight C, Black CM, Silman AJ. Prediction of five year survival following presentation with scleroderma: Development of a simple model using three disease factors at first visit. *Arthritis Rheum* 1999;42:2660-5.
 54. Jacobsen S, Ullman S, Shen GQ, Wiik A, Halberg P. Influence of clinical features, serum antinuclear antibodies, and lung function on survival of patients with systemic sclerosis. *J Rheumatol* 2001;28:2454-9.
 55. Hachulla E, Carpentier P, Gressin V, Diot E, Allanore Y, Sibilia J, et al. Risk factors for death and the 3-year survival of patients with systemic sclerosis: The French Itiner AIR-Sclerodermie study. *Rheumatology* 2009;48:304-8.
 56. Joven BE, Almodovar R, Carmona L, Carreira PE. Survival, causes of death, and risk factors associated with mortality in Spanish systemic sclerosis patients: Results from a single university hospital. *Semin Arthritis Rheum* 2010;39:285-93.
 57. Tyndall AJ, Bannert B, Vonk M, Airo P, Cozzi F, Carreira PE, et al. Causes and risk factors for death in systemic sclerosis: A study from the EULAR Scleroderma Trials and Research (EUSTAR) database. *Ann Rheum Dis* 2010;69:1809-15.
 58. Czirjak L, Kumanovics G, Varju C, Nagy Z, Pakozdi A, Szekanecz Z, et al. Survival and causes of death in 366 Hungarian patients with systemic sclerosis. *Ann Rheum Dis* 2008;67:59-63.
 59. Al-Dhaher FF, Pope JE, Ouimet JM. Determinants of morbidity and mortality of systemic sclerosis in Canada. *Semin Arthritis Rheum* 2010;39:269-77.
 60. Kim J, Park SK, Moon KW, Lee EY, Lee YJ, Song YW, et al. The prognostic factors of systemic sclerosis for survival among Koreans. *Clin Rheumatol* 2010;29:297-302.