

# Lymphoproliferative Disorders in Rheumatoid Arthritis: Clinicopathological Analysis of 76 Cases in Relation to Methotrexate Medication

YOSHIHIKO HOSHIDA, JING-XIAN XU, SHIGEKI FUJITA, ITSUKO NAKAMICHI, JUN-ICHIRO IKEDA, YASUHIKO TOMITA, SHIN-ICHI NAKATSUKA, JUN-ICHI TAMARU, ATSUSHI IIZUKA, TSUTOMU TAKEUCHI, and KATSUYUKI AOZASA

**ABSTRACT. Objective.** Individuals with rheumatoid arthritis (RA) with or without methotrexate (MTX) medication occasionally develop lymphoproliferative disorders (MTX-LPD and non-MTX-LPD, respectively). The hyperimmune state of RA itself or the immunosuppressive state induced by MTX administration might contribute to development of LPD. Our objective was to characterize MTX-LPD in comparison to non-MTX-LPD and sporadic LPD in patients with RA.

**Methods.** We compared MTX-LPD to non-MTX-LPD and sporadic LPD by evaluating 48 cases of MTX-LPD, 28 non-MTX-LPD, and 150 sporadic LPD.

**Results.** Later onset age of LPD and female predominance were evident in patients with RA-LPD compared to sporadic LPD. The interval between the diagnosis of RA and LPD in MTX-LPD (median 132 mo) was significantly shorter than that in non-MTX-LPD (240 mo). The frequency of diffuse large B cell lymphoma (DLBCL) and positive rate of Epstein-Barr virus (EBV) in RA-LPD was significantly higher than in sporadic LPD (57.9% vs 42.7%, 27.6% vs 9.9%, respectively). After withdrawal of MTX, 11 of the MTX-LPD cases showed a spontaneous regression of tumors. The 5-year survival rate in RA-LPD (59.2%) was significantly worse than that in sporadic LPD (74.6%).

**Conclusion.** The majority of cases of RA-LPD show similar clinicopathological characteristics irrespective of MTX medication, except for spontaneous regression of LPD after withdrawal of MTX in MTX-LPD, and a shorter interval between the diagnosis of RA and LPD in MTX-LPD than in non-MTX-LPD. RA-LPD cases showed younger age of onset, female predominance, unfavorable prognosis, and higher frequencies of DLBCL and EBV positivity compared to sporadic LPD. (First Release Nov 15 2006; J Rheumatol 2007;34:322–31)

## Key Indexing Terms:

RHEUMATOID ARTHRITIS    METHOTREXATE    LYMPHOPROLIFERATIVE DISORDERS  
EPSTEIN-BARR VIRUS    HYPERIMMUNE STATE    IMMUNOSUPPRESSIVE STATE

Lymphoproliferative disorders (LPD) occasionally develop in individuals with immune deficiencies. These diseases are categorized as immunodeficiency-associated LPD in the recent World Health Organization (WHO) classification for

lymphoid neoplasms<sup>1</sup>. Immunosuppressive conditions prior to LPD are categorized into primary immune disorders; human immunodeficiency virus infection; iatrogenic immunosuppression in patients receiving solid organ or bone marrow allografts, i.e., post-transplant LPD; and iatrogenic immunosuppression associated with methotrexate (MTX) administration<sup>1</sup>.

MTX is administered to patients with autoimmune diseases, especially rheumatoid arthritis (RA), to suppress the hyperimmune state. This in turn may induce immunosuppression and provide a basis for the development of LPD<sup>2,3</sup>. Since Ellman's first report on lymphoma in a patient with RA who received low-dose MTX<sup>4</sup>, a relationship of MTX medication and development of LPD has been discussed<sup>5–11</sup>. Regression of LPD after withdrawal of MTX medication is regarded to be strong evidence for the carcinogenic potential of MTX. On the other hand, patients with RA develop LPD at a frequency 2.0 to 5.5 times higher than the general population<sup>12–14</sup>. These findings raise the question whether the hyperimmune state in RA itself or the immunosuppressive state induced by MTX administration for con-

From the Department of Pathology, Osaka University Graduate School of Medicine, Suita, Osaka; and the Department of Pathology and Second Department of Internal Medicine, Saitama Medical Center, Saitama Medical School, Saitama, Japan.

Supported in part by grants from the Ministry of Education, Science, Culture and Sports of Japan (15026209, 15406013, 15639004, 16390105, 16590276, 16590277).

Y. Hoshida, MD; J.-X. Xu, MD; S. Fujita, MD; I. Nakamichi, MD; J.-I. Ikeda, MD; Y. Tomita, MD; S.-I. Nakatsuka, MD, Department of Pathology, Osaka University Graduate School of Medicine; J.-I. Tamaru, MD, Department of Pathology, Saitama Medical Center; A. Iizuka, MD; T. Takeuchi, MD, Second Department of Internal Medicine, Saitama Medical Center, Saitama Medical School; K. Aozasa, MD, Department of Pathology, Osaka University Graduate School of Medicine.

Address reprint requests to Dr. Y. Hoshida, Department of Pathology (C3), Osaka University Graduate School of Medicine, 2-2 Yamadaoka, Suita, Osaka, 565-0871, Japan.

E-mail: hoshida@molpath.med.osaka-u.ac.jp

Accepted for publication August 30, 2006.

trol of RA contributes to the development of LPD. Indeed, Starkebaum has put forward the proposition that whether and how MTX might influence lymphoma development in RA has not been clearly established<sup>15</sup>. Chen and Cronstein suggested that the mechanism of action of MTX might not be one of immunosuppression, but rather an antiinflammatory action<sup>16</sup>.

We wished to characterize the development of LPD in patients with RA who were taking MTX (MTX-LPD) or were not (non-MTX-LPD); data on 76 cases of LPD in Japanese patients with RA were collected through a nationwide study. Clinicopathologic features in MTX-LPD and non-MTX-LPD patients were summarized and compared with those in patients with sporadic LPD and post-transplant LPD, one of the immunodeficiency-associated LPD.

## MATERIALS AND METHODS

A total of 76 patients with RA in whom LPD developed were selected for study: 28 through a review of Japanese journals, 9 through the *Annual of Pathological Autopsy Cases in Japan (1978-97)* (Japanese Society of Pathology, Tokyo, Japan), 29 from consultation case files of the Department of Pathology, Osaka University, and 10 from case files of the Saitama Medical School. The diagnosis of RA was made according to the American College of Rheumatology (ACR) classification criteria<sup>17,18</sup>. All but 9 autopsy cases were admitted to hospitals during the period 1997–2005. The ACR criteria for RA diagnosis were applied when the patients visited the participating hospitals.

Forty-eight patients had been receiving MTX treatment for RA at the onset of LPD (MTX-LPD). Twenty-eight patients received nonsteroidal antiinflammatory drugs, but not MTX (non-MTX-LPD). Patients of the non-MTX-LPD group never received MTX treatment for RA. Twenty-five patients in the non-MTX group had received prednisolone, bucillamine, sodium aurothiomalate, D-penicillamine, salazosulfapyridine, and cyclophosphamide for the treatment of RA. Clinicopathologic findings in 22 of these cases have been described<sup>19</sup>. For comparison, 150 consecutive cases with sporadic LPD admitted to the Osaka University Hospital during 1997–2005 were analyzed. They included 111 cases of B cell LPD, 16 T cell, 6 natural killer (NK)/T cell LPD, and 16 cases of Hodgkin's lymphoma. The immunophenotype in one case could not be determined. Among the cases of B cell lymphoma, 64 cases were diffuse large B cell lymphoma (DLBCL) and 23 follicular lymphoma.

Histologic specimens obtained by biopsy were fixed in 10% formalin and routinely processed for paraffin-embedding. Histologic sections cut at 4  $\mu$ m thickness were stained with hematoxylin and eosin and immunoperoxidase procedures. All the histologic sections were reviewed by 2 authors (YH and KA), and classified according to the WHO criteria<sup>1</sup>. Adequate clinical information was available in all cases.

The study was approved by the institutional review board of Osaka University Medical School.

**Immunohistochemical staining.** Immunoperoxidase procedures (ABC method) were carried out in all cases. The primary antibodies used in the study and dilutions were as follows: CD3 $\epsilon$  (1:100; Dakopatts, Glostrup, Denmark), UCHL-1 (CD45RO; 1:100; Dakopatts), L-26 (CD20; 1:200; Dakopatts), JCB117 (CD79a; 1:100; Dakopatts), 123C3 (CD56; 1:40; Zymed, South San Francisco, CA, USA), ZH7 (CD16; 1:200; Novocastra, Newcastle, UK), TIA-1 (1:500; Coulter, Hialeah, FL, USA), and Ber-H2 (1:10; Dakopatts). Before incubation, sections were pretreated with 1% trypsin in Tris buffer (pH 7.8) for CD3 $\epsilon$ , and heated for 5 min in citrate buffer (pH 6.0) for CD16 and CD56, in a microwave oven.

**DNA extraction.** DNA was extracted from paraffin-embedded sections using chelating resin (Sigma, St. Louis, MO, USA). Briefly, 5 sections of

5  $\mu$ m thickness were cut from paraffin blocks, then suspended in 40% resin, boiled for 10 min, and centrifuged for 5 min at 18,000 g. One to 10 microliters of the supernatant was used for each polymerase chain reaction (PCR) analysis. The preservation of DNA was confirmed by PCR amplification with primers specific for a 205 bp segment of the  $\beta$ -globin gene (5'-GGT TGG CCA ATC TAC TCC CAG G-3' and 5'-CAA CTT CAT CCA CGT TCA CC-3').

**Detection of human T-lymphotropic virus-1 (HTLV-1) genome.** For detection of HTLV-1 proviral DNA, 40 cycles of 94°C/58°C/72°C were used with *tax* primers for a 159 bp segment common to the HTLV-1 and HTLV-2 proviral genome (5'-CGG ATA CCC AGT CTA CGT GT-3' and 5'-GAG CCG ATA ACG CGT CCA TCG -3') and *pol* primers for a 119 bp segment specific to the HTLV-1 proviral genome (5'-CTT CAC AGT CTC TAC TTG TGC-3' and 5'-CGG CAG TTC TGT GAC AGG G-3')<sup>20</sup>.

**In situ hybridization for Epstein-Barr virus (EBV).** EBV RNA *in situ* hybridization was performed in all RA-LPD cases and 111 cases of sporadic LPD as described<sup>21</sup>. The Raji cell line was used as a positive control. As negative controls, the hybridizing mixture was tested with sense probe and antisense probe after RNase treatment (Sigma).

**Statistical analysis.** To characterize RA-LPD in comparison with sporadic LPD, multivariate analysis was performed by logistic regression analysis<sup>22</sup>. Factors examined were age at the diagnosis of LPD, sex, histology, and EBV positivity of the LPD. The followup period for survivors with RA-LPD and sporadic LPD calculated from the date of diagnosis of LPD ranged from 1 to 288 (median 25) months. Actual survival curves were calculated by the Kaplan-Meier method<sup>23</sup>, and differences were examined by the log-rank test to detect significant prognostic factors<sup>24</sup>. Factors examined were age, sex, primary site of LPD lesion, stage of disease, type of histology, immunophenotype of proliferating cells, EBV positivity, and medication for RA. Multivariate analysis was carried out with the Cox proportional-hazards model to identify independent prognostic factors<sup>25</sup>. The 5-year survival rate in sporadic LPD and RA-LPD was adjusted for sex and age. Age adjustment was conducted using categorized dummy variables of < 40, 40–59, and  $\geq$  60 years. Differences of EBV positivity in the following groups were examined: RA-LPD vs sporadic LPD, sex, stage of disease, histology, and MTX-LPD with or without spontaneous regression after withdrawal of MTX. The Mann-Whitney U-test was used to evaluate the differences in age at the time of development of LPD between patients with and those without RA, and the interval from the onset of RA to development of LPD between patients with and without MTX medication among the patients with RA. A p value of 0.05 was considered significant.

## RESULTS

**Clinical findings.** Clinical features in 76 cases with MTX-LPD and non-MTX-LPD, together with 150 cases of sporadic LPD, are summarized in Table 1. One patient with RA-LPD simultaneously had Hashimoto's thyroiditis, and 4 with RA-LPD had Sjögren's disease. Forty-eight patients had been treated with low-dose MTX (2.5 to 17 mg/wk) until the diagnosis of LPD (MTX-LPD) for periods of 2 to 131 (median 54) months; cumulative doses of the MTX ranged from 24 to 4785 (median 940) mg. One of these patients simultaneously received anti-tumor necrosis factor- $\alpha$  therapy 9 months before the onset of LPD. Details of the clinical and histological information in this case were reported recently<sup>26</sup>. Age at the diagnosis of RA ranged from 3 to 84 (median 51) years. The ages of patients at the diagnosis of RA-LPD and sporadic LPD ranged from 23 to 87 (median 66) years, with a male:female ratio of 21:54, and from 17 to 87 (median 58) years, ratio 93:57, respectively.

Table 1. Clinical findings in MTX-LPD and non-MTX-LPD.

	MTX-LPD	Non-MTX-LPD	RA-LPD	Sporadic LPD
No. of cases	48	28	76	150
Age, yrs				
Median (range)	67 (34–87)	66 (23–77)	66 (23–87)	58 (17–87)
Sex				
Male	15	6	21	93
Female	33	22	55	57
Interval between onset of RA and LPD, mo				
Median (range)	132 (3–360)	240 (21–660)	144 (3–660)	
MTX administration				
Total dose, mg, median (range)	940 (24–4785)			
Duration, mo, median (range)	54 (2–131)			
Immunophenotype				
B cell	38	22	60	111
T cell	3	4	7	16
Natural killer cell	1	0	1	6
Hodgkin's lymphoma	6	2	8	16
Primary site				
Nodal	22	12	34	76
Extranodal	23	12	35	63
Undetermined	3	4	7	11
Stage				
I	10	7	17	32
II	7	3	10	36
III	15	7	22	16
IV	14	8	22	55
Undetermined	2	3	5	11
5 yr survival rate, %	58.9	52.8	59.2	74.6

\*  $p < 0.05$ . MTX: methotrexate, RA: rheumatoid arthritis, LPD: lymphoproliferative disorder. \*  $p < 0.05$ .

Later-onset age of LPD and female predominance were evident in the patients with RA-LPD ( $p < 0.01$  and  $p < 0.05$ , respectively). The interval between the diagnosis of RA and MTX-LPD (median 132 mo) was significantly shorter than that in non-MTX-LPD (240 mo) ( $p < 0.05$ ). Presenting symptoms included superficial lymphadenopathy (in 33.3%), followed by extranodal mass (27.0%), and much less frequently abdominal pain, bone pain, fever, cough, and thrombocytopenia.

There were no significant differences in the primary sites and distribution of clinical stage between RA-LPD and sporadic LPD. The primary site of RA-LPD was nodal in 34 and extranodal in 35 patients; epipharynx and lung in 4 each; thyroid gland and skin in 3 each; chest wall, spleen, urinary tract, bone, terminal ileum, and bone marrow in 2 each; and mediastinum, gingiva, parotid gland, stomach, brain, tongue, and testis in one each. The remaining 7 patients presented with advanced disease, therefore the primary sites could not be determined. Based on the records of physical examinations, surgical notes, and pathological examinations of the specimens, the Ann Arbor staging system was applied in all patients, with the following results: stage I in 17 patients, stage II in 10, stage III in 22, stage IV in 22, and undetermined in 5 patients. As for 44 patients

with DLBCL, 18 presented with localized disease, 21 with advanced disease, and 5 were undetermined.

**Histological findings.** There were no prominent differences in the histologic findings between MTX-LPD and non-MTX-LPD (Table 2). There were no prominent differences in the distribution of immunophenotype between sporadic LPD and RA-LPD, and between MTX-LPD and non-MTX-LPD. Fifty-nine RA-LPD cases were B cell-type, 7 were T cell-type, one was NK/T cell-type, and 8 were Hodgkin's lymphoma. The frequency of DLBCL in RA-LPD (57.9%) was significantly higher than that in sporadic LPD (42.7%) ( $p < 0.05$ ). Two cases of MTX-LPD and one case of non-MTX-LPD showed a polymorphous appearance consisting of the full range of mature B cells from immunoblasts to plasma cells, small and medium-size lymphocytes, and numerous cells with centrocytic and centroblastic appearance, and they were thus categorized as the diffuse polymorphic type (Figure 1). Another case of MTX-LPD also showed a polymorphous B cell proliferation containing occasional Reed-Sternberg-like cells, and was diagnosed as Hodgkin's lymphoma-like LPD. T cell LPD included peripheral T cell lymphoma, unspecified, and angioimmunoblastic T cell lymphoma.

There was one case of NK/T cell lymphoma in the nasal

Table 2. Histologic classification of MTX-LPD and non-MTX-LPD.

	MTX-LPD (%)	Non-MTX-LPD (%)	RA (%)	Sporadic LPD (%)
Total	48	28	76	150
B cell LPD	38 (79.2)	22 (78.6)	60 (78.9)	111 (74.0)
DLBCL	29 (60.4)	15 (53.6)	44 (57.9)	64 (42.7)
Follicular lymphoma	3	2	5	23
Lymphoplasmacytic	2	0	2	4
Plasmacytoma	0	2	2	1
Mantle cell lymphoma	0	1	1	3
Diffuse polymorphic	2	1	3	0
HL-like LPD	1	0	1	0
Others	1	1	2	16
T cell LPD	3 (6.3)	4 (14.3)	7 (9.2)	16 (10.7)
Natural killer/T cell LPD	1 (2.1)	0 (0)	1 (1.3)	6 (4.0)
HL	6 (12.5)	2 (7.1)	8 (10.5)	16 (10.7)

MTX: methotrexate, DLBCL: diffuse large B cell lymphoma, HL: Hodgkin's lymphoma. \*  $p < 0.05$ .

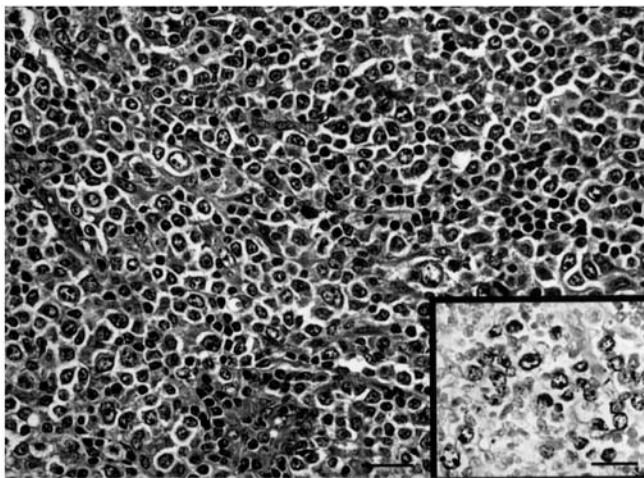


Figure 1. Diffuse polymorphic LPD in RA patient with non-MTX medication. There is a polymorphous pattern of proliferation consisting of the full range of mature B cells from immunoblasts to plasma cells, small and medium-size lymphocytes, and numerous cells (H&E stain). Inset: *In situ* hybridization with EBER-1 probe revealed positive signals in the nucleus of large cells (EBER-1). Scale bar = 200  $\mu$ m.

cavity in the MTX-LPD group. Hodgkin's lymphoma was subclassified as of mixed cellularity in 7 cases and nodular lymphocyte-predominant in one case.

**EBV infection.** *In situ* hybridization for EBV revealed positive signals in the nucleus of large atypical cells of non-Hodgkin's lymphoma (NHL) and Reed-Sternberg cells in the cases of Hodgkin's lymphoma: 50%–90% of the large atypical cells in NHL and more than 90% of the Reed-Sternberg cells showed positive signals. There were no differences in the percentages of EBV-positive cells between MTX-LPD and non-MTX-LPD. Among RA-LPD, 21 (27.6%) of 76 cases were judged as EBV-positive (Table 3): 10 of 60 cases of B cell lymphoma, one case of NK/T cell lymphoma, and 7 of 8 Hodgkin's lymphoma cases were EBV-positive. The EBV-positive rate in RA-LPD was significantly higher than that in sporadic LPD. Three of 7 cases of the T cell LPD were EBV-positive. In general, there was no difference in the frequency of EBV positivity between the patients with MTX-LPD and with non-MTX-LPD (Table 4). Three of 4 cases with T cell-type non-MTX-LPD

Table 3. Epstein-Barr virus positivity in MTX-LPD and non-MTX-LPD.

	MTX-LPD (%)	Non-MTX-LPD (%)	RA (%)	Sporadic LPD (%)
Total	13/48 (27.1)	8/28 (28.6)	21/76 (27.6)	11/111 (9.9)
B cell LPD	7/38 (18.4)	3/22 (13.6)	10/60 (16.7)	2/87 (2.3)
DLBCL	4/29 (13.8)	2/15 (13.3)	6/44 (13.6)	2/50 (4.0)
Diffuse polymorphic	2/2 (100)	1/1 (100)	3/3 (100)	0/0 (0)
HL-like LPD	1/1 (100)	0/0 (0)	1/1 (100)	0/0 (0)
Others	0/6 (0)	0/6 (0)	0/12 (0)	0/37 (0)
T cell LPD	0/3 (0)	3/4 (75)	3/7 (42.9)	2/9 (22.2)
Natural killer/T cell LPD	1/1 (100)	0/0 (0)	1/1 (100)	4/5 (80)
HL	5/6 (83.3)	2/2 (100)	7/8 (87.5)	3/8 (37.5)

MTX: methotrexate, DLBCL: diffuse large B cell lymphoma, HL: Hodgkin's lymphoma. \*  $p < 0.05$ .

Table 4. Summary of 11 patients who showed regression of RA-LPD after withdrawal of MTX.

Patient	Age	Sex	Primary Site	Primary Symptom	Histology	Stage	In situ (EBER-1)	RA Duration, mo	MTX Dose, mg/wk	MTX Duration, mo	Total Dose, mg	Regression, mo	Recurrence	Therapy for Recurrence	Effect of Therapy	Followup Periods, mo	Outcome
1	67	F	LN	LN swelling	DLBCL	IV	-	120	5	120	2600	5	Yes	Chemo	PR	46	A
2	62	F	LN	LN swelling	HL-like LPD	III	+	20	5	12	270	2	Yes	Chemo	CR	33	D
3	60	M	LN	LN swelling	AILDT	III	-	12	8	7	228	4	Yes	Chemo	PR	9	A
4	68	M	LN	LN swelling	HL, MC	IV	-	240	6	72	864	1	Yes	Chemo	CR	20	A
5	53	F	LN	LN swelling	HL, MC	IV	+	84	6-12	72	1724	10	Yes	Chemo	CR	42	A
6	62	F	LN	LN swelling	DLBCL	II	-	216	6-10	24	600	64	No	-	-	64	A
7	67	F	LN	Fever, LN swelling	D poly	III	+	8	8	6	192	25	No	-	-	25	DID
8	77	F	Skin	Tumor mass	D poly	II	+	84	8	36	1112	22	No	-	-	22	A
9	70	M	LN	LN mass	FL	III	-	10	12-17	10	584	10	No	-	-	10	A
10	59	F	LN	Fever	HL, MC	III	+	228	5-7.5	123	1076	8	No	-	-	9	A
11	74	F	Nasal cavity	Mass formation	NKTCL	I	+	130	4-8	118	2880	21	No	-	-	21	A

MTX: methotrexate, LN: lymph node, DLBCL: diffuse large B cell lymphoma, HL: Hodgkin's lymphoma, AILD: angioimmunoblastic T cell lymphoma, MC: mixed cellularity, D poly: diffuse polymorphic, NKTCL: natural killer T cell lymphoma; PR: partial remission, CR: complete remission, A: alive, D: dead, DID: death from intercurrent disease, FL: follicular lymphoma.

were EBV-positive, but none of the T cell LPD in the MTX-LPD was EBV-positive.

**HTLV-1 infection.** PCR analysis for the HTLV-1 proviral genome was performed in 7 cases with T cell RA-LPD, giving completely negative results.

**Clinical outcome.** MTX was stopped soon after the appearance of nodal or extranodal masses in patients with MTX-LPD, who subsequently underwent biopsy of the lesional tissues. The masses showed a tendency for regression in 11 patients during the 1 to 2 week periods before definite histologic diagnosis was obtained. Mass lesions regrew 2-10 months after the withdrawal of MTX in 5 cases, and then the chemotherapy was started in these patients. Regression of the lesions continued for 8-64 months without chemotherapy in the remaining 6 cases (Figure 2, Table 4). The EBV-positive rate in these 11 cases, 54.5%, was higher than that in the remaining 38 cases (21.1%;  $p < 0.05$ ).

Another 42 patients (26 MTX-LPD and 16 non-MTX-LPD) received chemotherapy, 3 received radiation therapy, 8 received combined chemo- and radiotherapy, and one received chemotherapy with peripheral blood stem-cell transplant. Two patients with LPD in the testis underwent surgical resection, followed by chemotherapy in one and combined chemo- and radiotherapy in the other. The chemotherapeutic agents included cyclophosphamide, vincristine, doxorubicin, prednisolone, MTX, bleomycin, mitomycin C, mercaptopurine, melphalan, and rituximab. Effects of adjuvant therapy were not recorded in one of these cases, who was lost to followup 6 months after the diagnosis of LPD. As a result, treatment outcome of the adjuvant therapies was evaluated in 46 patients according to the guidelines of the international workshop to standardize response criteria for NHL<sup>27</sup>. After chemo- and/or radiotherapy, 42 (91.3%) of 46 patients showed a complete or partial response. Three patients showed progressive disease. Each patient with lesions in the terminal ileum and testis, respectively, underwent a surgical resection of the lesions, followed by chemotherapy in the latter case. Perforation in the terminal ileum occurred in the former case and the patient died 1 month after the surgery. The latter patient received adjuvant therapy, and entered complete remission, but died of myocardial infarction 39 months after the surgery.

**Statistical analysis.** To characterize RA-LPD in comparison with sporadic LPD, multivariate logistic regression analysis was performed. Factors examined were age at the diagnosis of LPD, sex, histology, and EBV positivity of LPD. Cases of RA-LPD were found to be older at diagnosis of LPD, and showed female preponderance and a higher positive rate for EBV than sporadic LPD ( $p < 0.01$ ). The frequency of DLBCL in RA-LPD was higher than that in sporadic LPD ( $p < 0.064$ ).

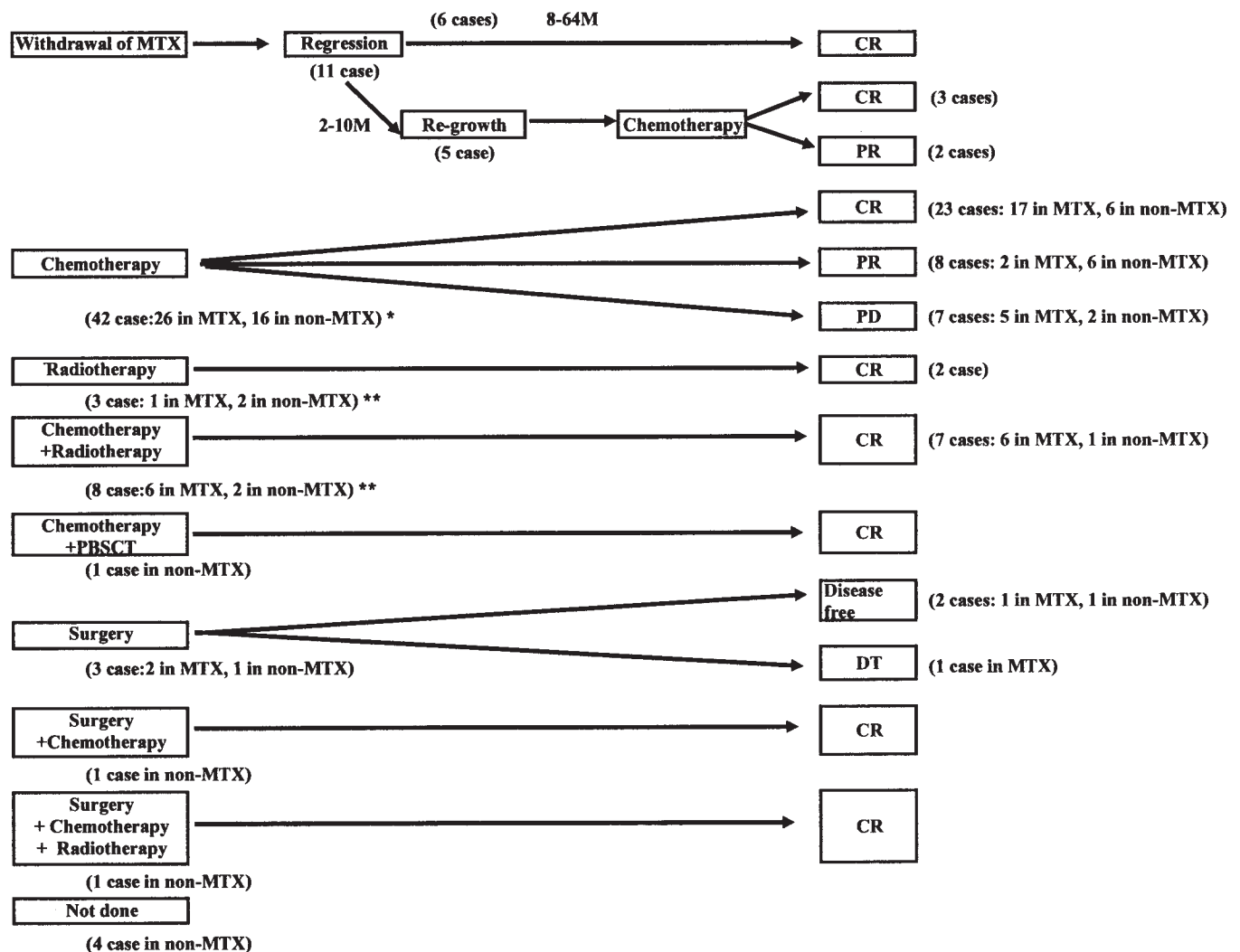
The followup period for survivors calculated from the date of diagnosis of RA-LPD ranged from 1 to 144 (median 22) months. The 1- and 5-year overall survival rate was

80.5% and 58.9%, respectively. Responses to adjuvant therapies and survival rates were rather similar between MTX-LPD and non-MTX-LPD. The 5-year survival rate in sporadic LPD (74.6%) was significantly better than that in RA-LPD (59.2%;  $p < 0.05$ ). Univariate analysis revealed that EBV positivity, stage of disease, and age at diagnosis of LPD were the prognostic factors for survival: EBV-negative LPD, early-stage disease (stage I or II), and younger age were favorable factors. Multivariate analysis showed that younger age at diagnosis and EBV positivity were significant independent factors for overall survival: 5-year survival for EBV-positive and EBV-negative patients and

patients aged  $< 60$  and  $> 60$  years was 76.3% vs 54.0% and 76.4% vs 63.9%, respectively ( $p < 0.01$ ). Adjusted for age and sex, RA-LPD data showed worse prognosis than sporadic LPD in those over 60 years of age ( $p < 0.01$ ). This difference was marked among female patients (Figure 3).

## DISCUSSION

Our study dealt with the largest number of cases with RA-LPD ever reported from Japan; there might have been an ascertainment bias because this was not a case-controlled study nor were the cases consecutive. The clinicopathologic findings in RA-LPD (MTX-LPD and non-MTX-LPD)



\* Four cases of clinical information were not available

\*\* One case of clinical information was not available

MTX: methotrexate, CR: complete remission, PR: partial remission, PD: progressive disease, DT: death due to tumor

Figure 2. Clinical outcome of MTX-associated lymphoproliferative disorders in Japan. \*Four cases of clinical information were not available. \*\*One case of clinical information was not available. CR: complete remission, PR: partial remission, PD: progressive disease, DT: death due to tumor, MTX: methotrexate, PBSCT: peripheral blood stem-cell transplant.



57%–61%, irrespective of MTX medication. This is rather close to the previous report on the frequency of LPD (67%) among RA patients treated in Sweden between 1964 and 1984, an era when aggressive immunosuppressive therapy including MTX was rarely employed<sup>36</sup>. These findings show that the frequency of DLBCL is higher in LPD developing in RA patients than in cases of sporadic LPD (42.7%) and post-transplant-LPD (16%–38%)<sup>28,37,38</sup>.

EBV is the well known oncogenic virus engaged in lymphomagenesis. An immunodeficient state is considered to provide a basis for the development of malignant lymphomas, probably through the activation of EBV. The EBV-positive rates in our study cases of RA-LPD (27.6%) and reported cases of post-transplant-LPD (63%–95%)<sup>39,40</sup> are significantly higher than that in sporadic LPD (9.9%;  $p < 0.05$ ). Baecklund, *et al*<sup>32</sup> reported a rather lower frequency of EBV positivity in RA-LPD than that in our cases, although the EBV-positive rates in the DLBCL in their cases and ours were similar: 12% to 13%. There were no differences in clinicopathologic or EBV status between MTX-treated and untreated patients; this may be consistent with the hyperimmune hypothesis for the development of RA-LPD. As stated by Weyand, *et al*<sup>41</sup>, the inability to control unwanted inflammation, often referred to as loss of tolerance, may be directly connected to the inability to survey lymphoid and extralymphoid organs for neoplasm and suppress the overgrowth of monoclonal B cell clones.

We found the EBV-positive rate in cases of T cell-type non-MTX-LPD, 75%, was much higher than that reported in sporadic peripheral T cell lymphomas (about 30%)<sup>42</sup> and B cell lymphomas (9.9%). We cannot provide an explanation for this. The presence of T cell LPD and Hodgkin's lymphoma with the higher EBV positivity (Table 3) may in part explain the higher EBV positivity in our non-MTX-LPD cases than, for example, in Kamel, *et al*<sup>43</sup>, in which only one (2%) of 42 cases with RA-LPD (the majority being non-MTX-LPD) was EBV-positive. Three cases of polymorphic LPD in patients with and without MTX medication were EBV-positive, as is usually observed in cases of polymorphic post-transplant-LPD<sup>1</sup>. None of 3 cases with T cell MTX-LPD was EBV-positive. One case of Hodgkin's-like LPD was EBV-positive as reported by Kamel, *et al*<sup>43</sup>.

Kamel, *et al* reported that some cases of MTX-LPD were associated with EBV and spontaneously regressed after the withdrawal of MTX, as observed in cases of post-transplant-LPD after the withdrawal of immunosuppressive agents<sup>6</sup>. In our series, one-quarter of MTX-LPD (11 cases) regressed spontaneously after withdrawal of MTX. The EBV-positive rate in the cases showing spontaneous regression of LPD (54.5%) was higher than in those without spontaneous regression (21.1%). A recent report by Feng, *et al* showed that MTX directly induced reactivation of EBV infection with release of infectious virions<sup>44</sup>. No case of non-MTX-LPD showed spontaneous regression. On the

other hand, it is not clear why MTX-LPD in the patients who were EBV-negative regressed after the withdrawal of MTX. This might also be consistent with the hyperimmune hypothesis in the development of RA-LPD.

Five-year survival rates in MTX-LPD and non-MTX-LPD did not differ. This seems surprising, since 6 cases of MTX-LPD had sustained remissions after stopping MTX. Among MTX-LPD cases, the majority showing regression of LPD were Hodgkin's lymphoma, Hodgkin's-like LPD, and polymorphic LPD with low potential for malignancy. On the other hand, the frequency of DLBCL, an aggressive lymphoma, was higher in the MTX-LPD than non-MTX-LPD cases. As a result, the 5-year survival rates for the 2 groups of RA-LPD patients were not different.

Adult T cell leukemia/lymphoma (ATL), which is rare in Western countries, is common in Japan<sup>45</sup>. Our previous study on LPD in renal transplant revealed that roughly 20% of cases of post-transplant-LPD were ATL<sup>28</sup>. This might be due to transmission of HTLV-1 via blood transfusion during hemodialysis. None of the present MTX-LPD and non-MTX LPD cases were ATL.

The 5-year overall survival rates in cases of MTX-LPD and non-MTX-LPD were 58.9% and 52.8%, respectively, which was significantly worse than that in sporadic LPD ( $p < 0.05$ ). After adjustment for age and sex, this tendency was confirmed in patients over 60 years old, and was more marked in female patients ( $p < 0.01$ ). The 5-year survival rate in cases with post-transplant-LPD was worse than in MTX-LPD and non-MTX-LPD. This might be due to the higher frequency of T cell LPD including ATL and NK/T cell LPD together with the absence of Hodgkin's lymphoma in post-transplant-LPD.

Our study revealed that the majority of cases of RA-LPD showed similar clinicopathological characteristics irrespective of use of MTX medication, except for the spontaneous regression of LPD after withdrawal of MTX in cases of MTX-LPD, and the shorter interval between the diagnosis of RA and LPD in MTX-LPD than in non-MTX-LPD. Cases of RA-LPD showed an older age at onset, a female predominance, an unfavorable prognosis, and higher frequencies of DLBCL and EBV positivity compared to cases of sporadic LPD.

## ACKNOWLEDGMENT

The authors thank Dr. Hideaki Tsukuma, Osaka Medical Center for Cancer and Cardiovascular Diseases, for advice in statistical analysis. The authors thank the following pathologists and physicians for providing clinical information: K. Taneichi, K. Shishido (Kitami Red Cross Hospital), H. Satoh, M. Mukai (Sapporo Municipal Hospital), M. Nagata (Tsukuba University), S. Itoyama (Saitama Medical School), A. Itsumi (Nihon University, Nerima Mitsugaoka Hospital), R. Ariwa (Otsuka Metropolitan Hospital), Y. Kurasono, M. Hara (Yokohama City University), S. Toma, S. Sugii, H. Mitomi (National Sagami Hospital), H. Sugiura (Kawasaki Municipal Ida Hospital), Y. Kondo, I. Okayasu (Kitasato University), M. Naitoh, T. Hasegawa, K. Arai, N. Endo (Niigata University), S. Furuta (National Tosei Hospital), K. Itoh (Yugawara Kosei Hospital), M. Itoh

(Numazu Seirei Hospital), T. Nojima, S. Sugai, H. Kawabata (Kanazawa Medical University), Y. Kageyama, K. Miura (Hamamatsu Medical University), M. Hayakawa (Hamamatsu Red Cross Hospital), M. Maeda (Toyoashi Municipal Hospital), M. Mizushima (Tajimi Prefectural Hospital), A. Ishihara (Matsusaka Chuo Hospital), Y. Kobashi (Tenri Hospital), S. Ohshima, T. Ueda, H. Yoshikawa, N. Yamamoto, E. Takai, T. Shizusawa (Osaka University), M. Tsudo, Y. Arima, M. Shintaku (Osaka Red Cross Hospital), M. Tsujimoto (Osaka Police Hospital), T. Yamagami, T. Soma, H. Tamaki (National Osaka Minami Hospital), M. Yaita (Kitano Hospital), M. Yukioka (Yukioka Hospital), S. Ishiguro, N. Araki (Center for Cancer and Cardiovascular Diseases, Osaka), K. Uda, H. Yamamoto (Saiseikai Tondabayashi Hospital), H. Nakanishi (Kyowakai Hospital), H. Miyazato, A. Kanamaru (Kinki University), K. Maeda (NTT West Hospital), S. Kosugi (Toyonaka Municipal Hospital), M. Yamauchi (Sakai Municipal Hospital), T. Tamaki, K. Iwase, M. Imakita (Izumisano Municipal Hospital), M. Kuwayama, H. Hattori (Yao Municipal Hospital), T. Tachikawa, K. Yoshida (Kinki Chuo Hospital), S. Yamamoto (Kansai Rosai Hospital), Y. Monobe (Kawasaki Hospital), A. Yamauchi, H. Sakamoto (Kagawa University), S. Mano (Kagawa Prefectural Chuo Hospital), H. Hashimoto, K. Saito (University of Occupational and Environmental Health), Y. Iwata (Kyusyu Koseinenkin Hospital), M. Ogata, K. Kashima (Oita University), and S. Yonemitsu and M. Yamaguchi (Saga University).

## REFERENCES

- Harris NL, Swerdlow SH. Methotrexate-associated lymphoproliferative disorders. In: Jaffe ES, Harris NL, Stein H, Vardiman JW, editors. Pathology and genetics, tumours of haematopoietic and lymphoid tissues, World Health Organization classification of tumours. Lyon: IARC Press; 2001:270-1.
- Symmons DP. Neoplasms of the immune system in rheumatic arthritis. *Am J Med* 1985;78:22-8.
- Isomaki HA, Hakulinen T, Joutsenlahti U. Excess risk of lymphomas, leukemia and myeloma in patients with rheumatoid arthritis. *J Chron Dis* 1978;31:691-6.
- Ellman MH, Hurwitz H, Thomas C, Kozloff M. Lymphoma developing in a patient with rheumatoid arthritis taking low dose weekly methotrexate. *J Rheumatol* 1991;18:1741-3.
- Salloum E, Doria R, Schubert W, et al. Spontaneous regression of lymphoproliferative disorders in patients treated with methotrexate for rheumatoid arthritis and other rheumatic diseases. *J Clin Oncol* 1996;14:1943-9.
- Mariette X, Cazals-Hatem D, Warszawski J, Liote F, Balandraud N, Sibilia J. Investigators of the Club Rhumatismes et Inflammation. Lymphomas in rheumatoid arthritis patients treated with methotrexate: a 3-year prospective study in France. *Blood* 2002;99:3909-15.
- Menke DM, Griesser H, Moder KG, et al. Lymphomas in patients with connective tissue disease. Comparison of p53 protein expression and latent EBV infection in patients immunosuppressed and not immunosuppressed with methotrexate. *Am J Clin Pathol* 2000;113:212-8.
- Kamel OW, van de Rijn M, Weiss LM, et al. Brief report: Reversible lymphomas associated with Epstein-Barr virus occurring during therapy for rheumatoid arthritis and dermatomyositis. *N Engl J Med* 1993;328:1317-21.
- Kamel OW, van de Rijn M, LeBrun DP, Weiss LM, Warnke RA, Dorfman RF. Lymphoid neoplasms in patients with rheumatoid arthritis and dermatomyositis: frequency of Epstein-Barr virus and other features associated with immunosuppression. *Hum Pathol* 1994;25:638-43.
- Kingsmore SF, Hall BD, Allen NB, Rice JR, Caldwell DS. Association of methotrexate, rheumatoid arthritis and lymphoma: Report of 2 cases and literature review. *J Rheumatol* 1992;19:1462-5.
- Moder KG, Tefferi A, Cohen MD, Menke DM, Luthra HS. Hematologic malignancies and the use of methotrexate in rheumatoid arthritis: a retrospective review. *Am J Med* 1995;99:276-82.
- Thomas E, Brewster DH, Black RJ, Macfarlane GJ. Risk of malignancy among patients with rheumatic conditions. *Int J Cancer* 2000;88:497-50.
- Mellemkjaer L, Linet MS, Gridley G, Frisch M, Moller H, Olsen JH. Rheumatoid arthritis and cancer risk. *Eur J Cancer* 1996;32A:1753-7.
- Gridley G, McLaughlin JK, Ekblom A, et al. Incidence of cancer among patients with rheumatoid arthritis. *J Natl Cancer Inst* 1993;85:307-11.
- Starkebaum G. Rheumatoid arthritis, methotrexate, and lymphoma: risk substitution, or cat and mouse with Epstein-Barr virus? *J Rheumatol* 2001;28:2573-5.
- Chan ESL, Cronstein BN. Molecular action of methotrexate in inflammatory diseases. *Arthritis Res* 2002;4:266-73.
- Arnett FC, Edworthy SM, Bloch DA, et al. The American Rheumatism Association 1987 revised criteria for the classification of rheumatoid arthritis. *Arthritis Rheum* 1988;31:315-24.
- Ropes MW, Bennett GA, Cobb S, Jacox R, Jessar RA. 1958 Revision of diagnostic criteria for rheumatoid arthritis. *Bull Rheum Dis* 1958;9:175-6.
- Hoshida Y, Tomita Y, Dong Z, et al. Lymphoproliferative disorders in autoimmune diseases in Japan: Analysis of clinicopathological features and Epstein-Barr virus infection. *Int J Cancer* 2004;108:443-9.
- Kwok S, Ehrlich G, Poesz B, Kalish R, Sninsky JJ. Enzymatic amplification of HTLV-1 viral sequences from peripheral blood mononuclear cells and infected tissues. *Blood* 1988;72:1117-23.
- Weiss LM, Chen YY, Liu XF, Shibata D. Epstein-Barr virus and Hodgkin's disease: a correlative in situ hybridization and polymerase chain reaction study. *Am J Pathol* 1991;139:1259-65.
- Harrel FE, Lee KL, Matchar DB, Reichert TA. Regression models for prognostic prediction: advantages, problems, and suggested solutions. *Cancer Treat Rep* 1985;69:1071-7.
- Kaplan EL, Meier P. Non-parametric estimation from incomplete observations. *J Am Statist Assoc* 1958;53:457-81.
- Peto RE, Pike MC, Armitage P, et al. Design and analysis of randomized clinical trials requiring prolonged observation of each patient. *Br J Cancer* 1977;35:1-39.
- Cox DR. Regression models and life-tables. *J R Stat Soc* 1972;34:187-220.
- Hoshida Y, Yamamoto S, Wada N, Xu J-X, Sasaki T, Aozasa K. Infliximab-associated lymphoproliferative disorders (LPD). *Int J Hematol* 2005;81:356-7.
- Cheson BD, Horning SJ, Coiffier B, et al. Report of an international workshop to standardize response criteria for non-Hodgkin's lymphoma. *J Clin Oncol* 1999;17:1244-53.
- Hoshida Y, Li T, Dong Z, et al. Lymphoproliferative disorders in renal transplants in Japan. *Int J Cancer* 2001;91:869-75.
- Levine AM, Seneviratne L, Espina BM, et al. Evolving characteristics of AIDS-related lymphoma. *Blood* 2000;96:4086-90.
- Aozasa K, Tsujimoto M, Sakurai M, et al. Non-Hodgkin's lymphomas in Osaka, Japan. *Eur J Cancer Clin Oncol* 1985;21:487-92.
- Lipsky PE. Rheumatoid arthritis. In: Braunwald E, Hauser SL, Fauci AS, editors. Harrison's principles of internal medicine. 15th ed. New York: McGraw-Hill Inc.; 2001:1928-37.
- Baecklund E, Iliadou A, Askling J, et al. Association of chronic inflammation, not its treatment, with increased lymphoma risk in rheumatoid arthritis. *Arthritis Rheum* 2006;54:692-701.
- Mikuls TR, Endo JO, Puumala SE, et al. Prospective study of

- survival outcomes in non-Hodgkin's lymphoma patients with rheumatoid arthritis. *J Clin Oncol* 2006;24:1597-602.
34. Kojima M, Itoh H, Shimizu K, et al. Malignant lymphoma in patients with systemic rheumatic disease (rheumatoid arthritis, systemic lupus erythematosus, systemic sclerosis, and dermatomyositis): a clinicopathologic study of 24 Japanese cases. *Int J Surg Pathol* 2006;14:43-8.
  35. Raphael M, Borisch B, Jaffe ES. Lymphoma associated with infection by the human immune deficiency virus (HIV). In: Jaffe ES, Harris NL, Stein H, Vardiman JW, editors. *Pathology and genetics, tumours of haematopoietic and lymphoid tissues*, World Health Organization Classification of tumours. Lyon: IARC Press;2001:260-3.
  36. Baecklund E, Sundstrom C, Ekblom A, et al. Lymphoma subtypes in patients with rheumatoid arthritis: increased proportion of diffuse large B cell lymphoma. *Arthritis Rheum* 2003;48:1543-50.
  37. Chadburn A, Chen JM, Hsu DT, et al. The morphologic and molecular genetic categories of post-transplantation lymphoproliferative disorders are clinically relevant. *Cancer* 1998;82:1978-87.
  38. Leblond V, Sutton L, Dorent R, et al. Lymphoproliferative disorders after organ transplantation: a report of 24 cases observed in a single center. *J Clin Oncol* 1995;13:961-8.
  39. Hoshida Y, Aozasa K. Malignancies in organ transplant recipients. *Pathol Int* 2004;54:649-58.
  40. Nalesnik MA, Jaffe R, Starzl TE, et al. The pathology of post-transplant lymphoproliferative disorders occurring in the setting of cyclosporine A prednisone immunosuppression. *Am J Pathol* 1988;133:173-92.
  41. Weyand CM, Goronzy JJ, Kurtin PJ. Lymphoma in rheumatoid arthritis: an immune system set up for failure. *Arthritis Rheum* 2006;54:685-9.
  42. Kamel OW, Holly EA, van de Rijn M, Lele C, Sah A. A population based, case control study of non-Hodgkin's lymphoma in patients with rheumatoid arthritis. *J Rheumatol* 1999;26:1676-80.
  43. Kamel OW, Weiss LM, van de Rijn M, Colby TV, Kingma DW, Jaffe ES. Hodgkin's disease and lymphoproliferations resembling Hodgkin's disease in patients receiving long-term low-dose methotrexate therapy. *Am J Surg Pathol* 1996;20:1279-87.
  44. Feng WH, Cohen JI, Fischer S, et al. Reactivation of latent Epstein-Barr virus by methotrexate; a potential contributor to methotrexate-associated lymphomas. *J Natl Cancer Inst* 2004;96:1691-702.
  45. The T- and B-Cell Malignancy Study Group. Statistical analysis of clinico-pathological, virological, and epidemiological data on lymphoid malignancies with special reference to adult T-cell leukemia/lymphoma: a report of the second nationwide study of Japan. *Jpn J Clin Oncol* 1985;15:517-35.