

Involvement of Mucosal-associated Invariant T cells in Ankylosing Spondylitis

Eri Hayashi, Asako Chiba, Kurisu Tada, Keiichi Haga, Mie Kitagaichi, Shihoko Nakajima, Makio Kusaoi, Fumio Sekiya, Michihiro Ogasawara, Ken Yamaji, Naoto Tamura, Yoshinari Takasaki, and Sachiko Miyake

ABSTRACT. Objective. Ankylosing spondylitis (AS) is characterized by chronic inflammation of the axial and peripheral joints and ligamentous attachments. Gut immunity is thought to be involved in AS, because a prominent coexistence of gut and joint inflammation has been observed in patients with AS. Mucosal-associated invariant T (MAIT) cells are preferentially located in the gut lamina propria and produce inflammatory cytokines such as interleukin 17 (IL-17) and tumor necrosis factor- α (TNF- α), which are therapeutic targets for AS. This study aimed to investigate the involvement of MAIT cells in AS.

Methods. The frequency of MAIT cells and their cytokine production were determined in patients with AS and healthy controls (HC). The expression of a MAIT cell activation marker (CD69) was analyzed in patients with AS by using flow cytometry.

Results. The frequency of MAIT cells in the peripheral blood was lower in patients with AS compared with HC. The levels of IL-17 produced by MAIT cells after activation were higher in patients with AS than in the HC. CD69 expression on MAIT cells correlated with the Ankylosing Spondylitis Disease Activity Score in patients with AS.

Conclusion. These results suggest the involvement of MAIT cells in the pathogenesis of AS. (J Rheumatol First Release July 1 2016; doi:10.3899/jrheum.151133)

Key Indexing Terms:

MAIT CELLS ANKYLOSING SPONDYLITIS ACTIVATION MARKER INTERLEUKIN 17

From the Department of Internal Medicine and Rheumatology, and Department of Immunology, and Department of Gastroenterology, Juntendo University School of Medicine, Tokyo, Japan.

Supported by the Japan Society for the Promotion of Science (Grant-in-Aid for Scientific Research [B] 26293234 to S.M.).

E. Hayashi, MD, Department of Internal Medicine and Rheumatology, and Department of Immunology, Juntendo University School of Medicine; A. Chiba, MD, PhD, Department of Immunology, Juntendo University School of Medicine; K. Tada, MD, PhD, Department of Internal Medicine and Rheumatology, Juntendo University School of Medicine; K. Haga, MD, PhD, Department of Gastroenterology, Juntendo University School of Medicine; M. Kitagaichi, MD, Department of Internal Medicine and Rheumatology, and Department of Immunology, Juntendo University School of Medicine; S. Nakajima, MD, Department of Internal Medicine and Rheumatology, and Department of Immunology, Juntendo University School of Medicine; M. Kusaoi, MD, PhD, Department of Internal Medicine and Rheumatology, Juntendo University School of Medicine; F. Sekiya, MD, PhD, Department of Internal Medicine and Rheumatology, Juntendo University School of Medicine; M. Ogasawara, MD, PhD, Department of Internal Medicine and Rheumatology, Juntendo University School of Medicine; K. Yamaji, MD, PhD, Department of Internal Medicine and Rheumatology, Juntendo University School of Medicine; N. Tamura, MD, PhD, Department of Internal Medicine and Rheumatology, Juntendo University School of Medicine; Y. Takasaki, MD, PhD, Department of Internal Medicine and Rheumatology, Juntendo University School of Medicine; S. Miyake, MD, PhD, Department of Immunology, Juntendo University School of Medicine.

Address correspondence to Dr. S. Miyake and Dr. A. Chiba, Department of Immunology, Juntendo University School of Medicine, 2-1-1 Hongo, Bunkyo-ku, Tokyo 113-8421, Japan.

E-mail: s-miyake@juntendo.ac.jp, a-chiba@juntendo.ac.jp

Accepted for publication May 27, 2016.

Ankylosing spondylitis (AS) is characterized by chronic inflammation of the axial and peripheral joints and ligamentous attachments and the absence of rheumatoid factor. Although the pathogenesis of AS is poorly understood, both genetic and environmental factors are thought to be involved¹. Gut immunity was suggested to be involved in AS because a prominent coexistence of gut and joint inflammation was present in patients with AS^{2,3,4}. In addition, the genetic predisposition of AS is similar to that of Crohn disease (CD)⁵. Thus, mucosal immunity might have an important role in the development and progression of AS.

Mucosal-associated invariant T (MAIT) cells are preferentially located in the gut lamina propria and produce inflammatory cytokines such as interleukin 17 (IL-17) and tumor necrosis factor- α (TNF- α), which are therapeutic targets for AS^{6,7,8,9,10,11}. Therefore, researchers have been increasingly interested in the function of MAIT cells in infection and inflammation^{12–21,22,23}. MAIT cells express an invariant T cell receptor α (TCR α) chain: Va7.2-J α 33 in humans and Va19-J α 33 in mice. The invariant TCR α chain is associated with a limited set of V β chains^{6,7}. MAIT cells are restricted by MHC-related molecule 1 (MR1), a nonpolymorphic MHC class 1b molecule, and their selection in the thymus is MR1-dependent⁷. MAIT cells require B cells as well as commensal microbiota for their peripheral expansion⁷.

Vitamin derivatives that originate from the bacterial riboflavin biosynthetic pathway were identified as antigens for MAIT cells²⁴. We previously reported that MAIT cells play a pathogenic role in murine models of arthritis, including collagen-induced arthritis and antibody-mediated arthritis¹⁴. In a study by Cho, *et al*, MAIT cells were found to be involved in rheumatoid arthritis (RA)¹⁵.

In our current study, we showed that the frequency of MAIT cells was low in the peripheral blood of patients with AS compared with healthy controls (HC). The production of IL-17 from MAIT cells after activation was higher in patients with AS than in the HC. The expression of CD69 on MAIT cells correlated with the Ankylosing Spondylitis Disease Activity Score (ASDAS) in patients with AS. The results of our study suggest that MAIT cells are involved in the pathogenesis of AS.

MATERIALS AND METHODS

Subjects. Our study included 30 patients diagnosed with AS [28 men and 2 women, median age (interquartile range; IQR) 34.5 yrs (29.8–46.0)] and 21 HC [20 men and 1 woman, median age 34.0 yrs (31.5–37.0)]. The diagnosis of AS was established according to the modified New York criteria²⁵. The HC did not have a history of any autoimmune disease and had never received immunosuppressive therapy. Informed consent was obtained from all patients with AS and HC according to the ethical guidelines for human subject research. The characteristics of the study participants are shown in Table 1. We used the ASDAS to evaluate the activity of AS²⁶.

Flow cytometry. Fresh peripheral blood mononuclear cells (PBMC) were isolated from heparinized blood by density-gradient centrifugation using Lymphoprep (Axis-Shield PoC AS). The cells were then stained with the combinations of the following monoclonal antibodies against human

Table 1. Clinical characteristics and laboratory test results of patients with AS and HC. Values are n or median (interquartile range).

Variables	HC	AS
Total	21	30
Male	20	28
Age, yrs	34.0 (31.5–37.0)	34.5 (29.8–46.0)
Disease duration, yrs		6.0 (3.0–12.3)
CRP, mg/dl		0.55 (0.100–1.28)
HLA-B27		
Positive		20
Unknown		8
Bowel inflammation		2
ASDAS		2.34 (1.26–3.05)
BASDAI		3.25 (1.75–4.45)
Medication		
Biologics		15 (IFX 8, ADA 7)
MTX		1
SASP		5
PSL		2
NSAID only		7
None		3

AS: ankylosing spondylitis; HC: healthy controls; CRP: C-reactive protein; ASDAS: Ankylosing Spondylitis Disease Activity Score; BASDAI: Bath Ankylosing Spondylitis Disease Activity Index; IFX: infliximab; ADA: adalimumab; MTX: methotrexate; SASP: salazosulfapyridine; PSL: prednisolone; NSAID: nonsteroidal antiinflammatory drug.

cell-surface antigens and a tetramer for 30 min on ice: anti-CD3-V500 (BD Biosciences), anti-CD4-APC-H7 (BD Biosciences), anti-CD8b-ECD (Beckman Coulter), anti-TCR- $\gamma\delta$ -FITC (Beckman Coulter), anti-CD161-Brilliant violet-421 (BioLegend), anti-V α 7.2-PE (BioLegend), anti-CD69-Brilliant violet 605 (BioLegend), and CD1d tetramer loaded with PBS-57 (NIH Tetramer Core Facility). MAIT cells were CD3+ $\gamma\delta$ TCR-V α 7.2TCR+CD161^{high}, $\gamma\delta$ T cells were CD3+ $\gamma\delta$ TCR+, invariant CD1d-restricted natural killer (NK) T cells were CD1d/PBS-57 tetramer+CD3+, and NK cells were CD3–CD56+. For intracellular active caspase-3 staining, PBMC were stained using surface markers. Thereafter, intracellular active caspase-3 staining was performed using the Active Caspase-3 Apoptosis Kit (BD Biosciences). Data were acquired on FACS LSR Fortessa (BD Biosciences) and the percentages of each cell population and mean fluorescence intensity (MFI) were analyzed using FlowJo software (Tree Star).

Intracellular cytokine staining. PBMC (2×10^6 cells/well in 96-well culture plates) were stimulated with 50 ng/ml phorbol-myristate-acetate (PMA; Sigma) and 500 ng/ml ionomycin (IM; Sigma) for 3 h at 37°C in 5% CO₂. Golgi Plug Protein Transport Inhibitor (BD Biosciences) was added for the last 2 h of the culture at a final concentration of 1.0 μ g/ml. After staining of the cell-surface antigens, intracellular cytokines were stained using the BD Cytofix/Cytoperm Fixation/Permeabilization Solution Kit (BD Biosciences) and Alexa Fluor 700 anti-IL-17A, PE-Cy7 anti-interferon- γ (IFN- γ), Alexa Fluor 700 anti-IL-2, PE-Cy7-anti-TNF- α , or their isotype control antibodies. Cells were analyzed on a FACS Fortessa flow cytometer (BD Biosciences) and data were analyzed using FlowJo software (Tree Star).

Statistical analysis. All data were analyzed using GraphPad Prism (GraphPad), and differences between the groups were analyzed using the Mann-Whitney U test. The significance level was set at $p < 0.05$. Associations between 2 variables were analyzed using Spearman correlation.

RESULTS

Reduced MAIT cell frequency in the peripheral blood of patients with AS. AS is chronic inflammatory arthritis characterized by the absence of specific autoantibodies and the contribution of innate immune cells to its pathogenesis. To reveal the involvement of innate-like lymphocytes (abundant in humans) in AS, we first examined the frequency of MAIT cells, $\gamma\delta$ T cells, and NK cells in the peripheral blood of patients with AS and HC by using flow cytometry. MAIT cells were identified as CD3+ $\gamma\delta$ TCR-V α 7.2TCR+CD161^{high} cells, $\gamma\delta$ T cells as CD3+ $\gamma\delta$ TCR+ cells, and NK cells as CD3–CD56+ cells. In peripheral blood, the frequency of MAIT cells was significantly lower in patients with AS (median 1.62%, IQR 0.70–3.96) compared with HC (median 5.27%, IQR 3.18–7.49; Table 2 and Figure 1B). Among MAIT cells, there was no difference in the populations of CD4–CD8–double-negative (DN) cells or CD8+ cells between patients with AS and HC (Figure 1C). In addition, the frequency (median, IQR) of $\gamma\delta$ T cells (HC 2.40%, 1.60–4.32 vs AS 2.02%, 1.39–3.74) and NK cells (HC 12.10%, 9.46–17.55 vs AS 8.64%, 6.87–14.18) among total lymphocytes was not significantly different between patients with AS and HC (Table 2 and Figure 1D, 1E). These results indicated that the frequency of MAIT cells, but not $\gamma\delta$ T cells and NK cells, was lower in the peripheral blood of patients with AS compared with HC.

Active caspase-3-positive MAIT cells are not increased in the peripheral blood of patients with AS. To determine the

Table 2. Frequency of innate-like lymphocytes. Values are median (interquartile range) unless otherwise specified.

Variables	HC	AS	p
MAIT cell, %	5.27 (3.18–7.49)	1.62 (0.70–3.96)	0.0001*
CD8+ MAIT cell, %	32.70 (25.55–72.60)	36.40 (25.08–47.65)	0.9695
MAIT cell DN for CD4 and CD8, %	62.10 (43.45–71.15)	55.40 (46.55–67.28)	0.5594
$\gamma\delta$ T cell, %	2.40 (1.60–4.32)	2.02 (1.39–3.74)	0.5466
NK cell, %	12.10 (9.46–17.55)	8.64 (6.87–14.18)	0.1930

* $p < 0.001$ by Mann-Whitney U test. HC: healthy controls; AS: ankylosing spondylitis; MAIT: mucosal-associated invariant T; DN: double negative; NK: natural killer.

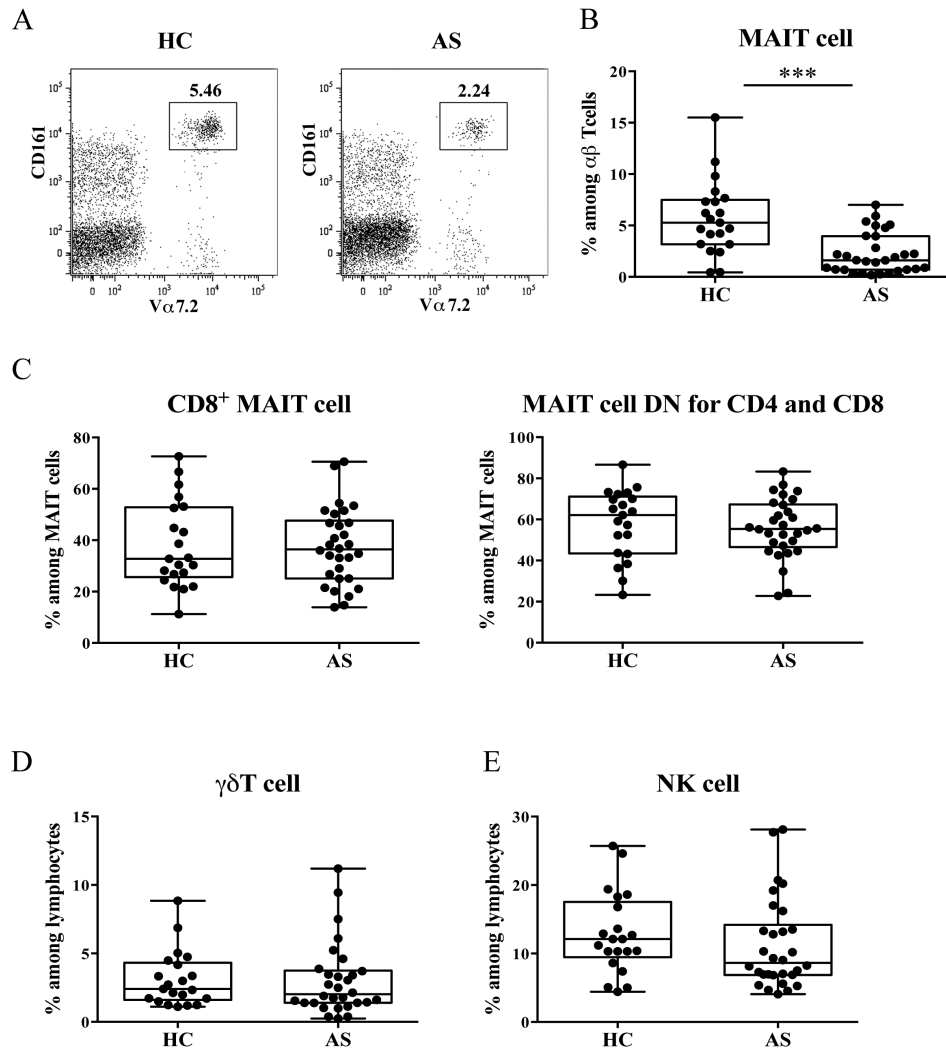


Figure 1. Frequency of innate-like lymphocytes in the peripheral blood of patients with AS and the HC. The frequency of innate-like lymphocytes in HC (n = 21) and patients with AS (n = 30) was analyzed by flow cytometry. A. Representative $V\alpha 7.2$ TCR and CD161 staining gated on $CD3+\gamma\delta TCR-$ cells from 1 HC and 1 patient with AS. MAIT cells were identified as $CD3+\gamma\delta TCR-V\alpha 7.2 TCR+CD161^{high}$ cells. Values in graphs indicate percentages of MAIT cells among $\alpha\beta T$ cells. B. Frequency of MAIT cells among $\alpha\beta T$ cells. C. Frequency of CD8+ and DN cells among MAIT cells. D. Frequency of $\gamma\delta T$ cells among lymphocytes. E. Frequency of NK cells among lymphocytes. Each symbol represents the value of 1 individual. Box indicates the first and third quartile. Line in the box indicates the median. Whiskers indicate the minimum and maximum. *** $p < 0.001$ (Mann-Whitney U test). AS: ankylosing spondylitis; HC: healthy controls; TCR: T cell receptor; MAIT: mucosal-associated invariant T; DN: double negative; NK: natural killer.

cause of the reduced number of MAIT cells in the peripheral blood of patients with AS, we examined whether MAIT cells underwent cell death *in vivo*. Peripheral blood MAIT cells were stained for intracellular active caspase-3. There was no difference in the frequency of active caspase-3–positive MAIT cells between HC and patients with AS (HC 11.20%, 6.05–21.10 vs AS 12.60%, 7.36–25.05; Appendix 1A). In addition, the expression level of FAS on MAIT cells was similar between HC and patients with AS (MFI: HC 1759, 1324–2166 vs AS 1442, 1255–1742; Appendix 1B).

Enhanced cytokine production in MAIT cells from patients with AS. Because MAIT cells efficiently produce high levels of inflammatory cytokines, we next assessed whether cytokine production from MAIT cells was altered in patients

with AS. We performed intracellular staining of cytokines, including IL-17, IL-2, TNF- α , and IFN- γ in MAIT cells after activation with PMA/IM. Although the frequency of MAIT cells that produced IL-2, TNF- α , and IFN- γ did not differ between patients with AS and HC, the population of MAIT cells that produced IL-17 was higher in patients with AS than in the HC (Figure 2). These results suggest a functional difference in MAIT cells between HC and patients with AS. *MAIT cell activation reflects AS disease activity.* Because enhanced cytokine production from MAIT cells suggests that they are activated in patients with AS, we next examined the surface expression of CD69 on MAIT cells. The frequency of CD69+ MAIT cells and the MFI of CD69 on MAIT cells were associated with the ASDAS (Figure 3). These results

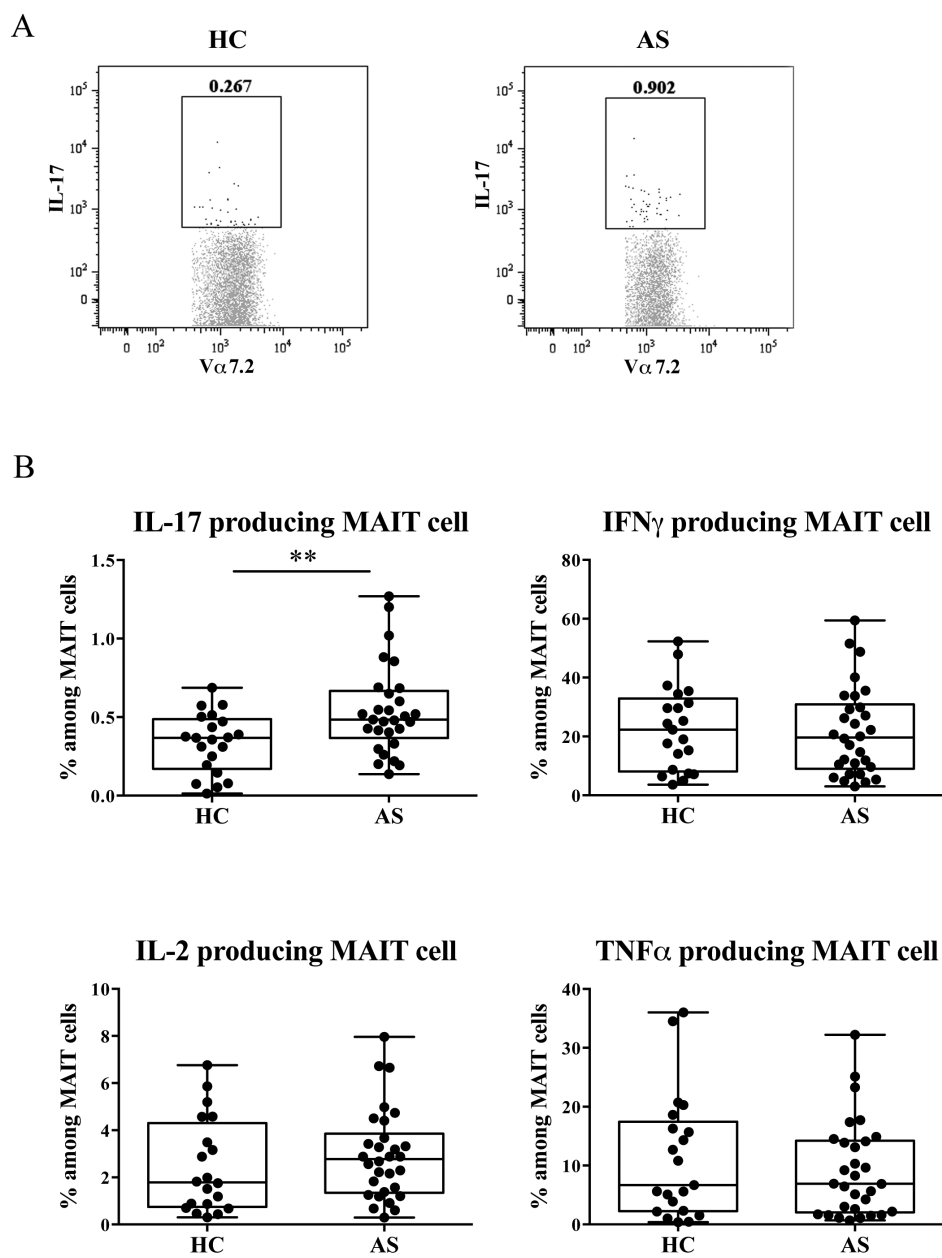


Figure 2. Frequency of cytokine-producing MAIT cells in patients with AS and HC. A. Representative staining profiles of IL-17 by MAIT cells from 1 HC and 1 patient with AS. B. The frequency of cytokine-producing MAIT cells was analyzed by flow cytometry in the HC (n = 21) and patients with AS (n = 30). MAIT cells producing IL-17 (IL-17+IFN- γ -), IFN- γ (IL-17-IFN- γ +), TNF- α (TNF- α +IL-2-), and IL-2 (TNF- α -IL-2+) are shown. Each symbol represents the value of 1 individual. Box indicates the first and third quartile. Line in the box indicates the median. Whiskers indicate the minimum and maximum. ** p < 0.01 (Mann-Whitney U test). MAIT: mucosal-associated invariant T; AS: ankylosing spondylitis; HC: healthy controls; IL-17: interleukin 17; IFN- γ : interferon- γ ; TNF- α : tumor necrosis factor- α .

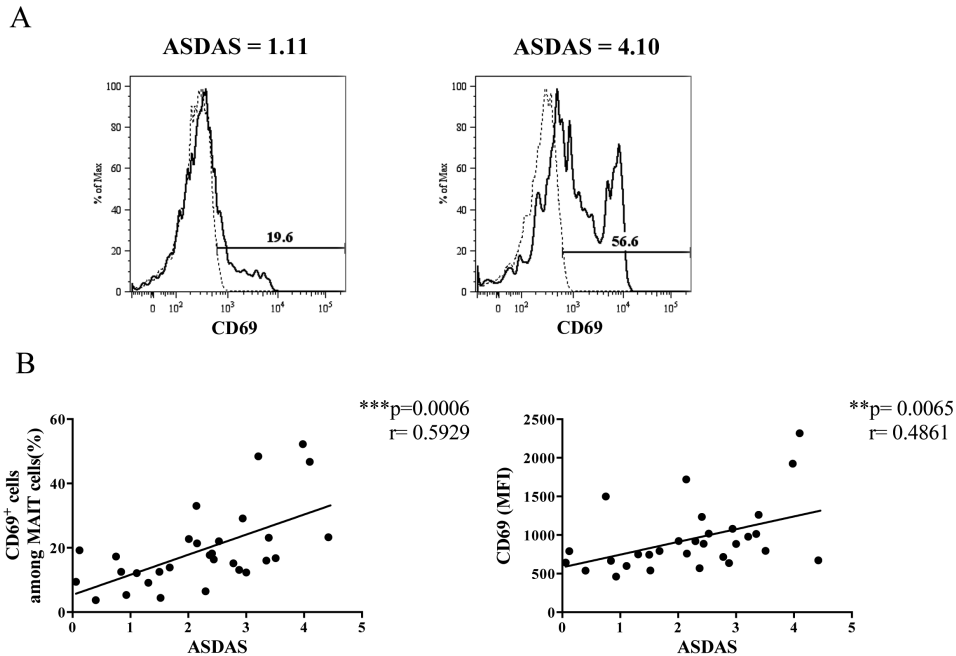


Figure 3. The correlation of activation status of MAIT cells with ASDAS. **A.** Representative staining and gating strategy of CD69 on MAIT cells from 1 patient with AS with ASDAS, 1.11 (left panel), and another patient with ASDAS, 4.10 (right panel). Dashed lines indicate mouse IgG1 κ isotype control staining and black lines indicate CD69 staining on MAIT cells. The percentages of CD69+ cells among MAIT cells are shown. **B.** The correlation of ASDAS with the frequency of CD69-positive MAIT cells (left panel) and with MFI of CD69 expression on MAIT cells (right panel) was examined using Spearman correlation. MFI of CD69 on MAIT cells was measured using FlowJo software. Each symbol represents the value of 1 individual. MAIT: mucosal-associated invariant T; ASDAS: Ankylosing Spondylitis Disease Activity Score; MFI: mean fluorescence intensity.

indicated that MAIT cells were activated *in vivo*, and that the activation status reflected the disease activity in patients with AS.

Minimal effect of anti-TNF- α therapy on MAIT cell frequency and IL-17 production in patients with AS. In our study, 50% of patients with AS received anti-TNF- α therapy. To determine whether the findings observed in MAIT cells from patients with AS were caused by the anti-TNF- α therapy, we compared the frequency and cytokine-producing capacity of MAIT cells from patients with AS, shown in the experiments for Figure 1, Figure 2, and Figure 3, grouped by the administration or lack of anti-TNF- α therapy. As shown in Figure 4A, the frequencies of MAIT cells, CD8+MAIT cells, and DN MAIT cells were comparable between patients with AS regardless of whether they received anti-TNF- α therapy. The production of cytokines by MAIT cells including IL-17, IL-2, and IFN- γ were also comparable between patient groups, except for TNF- α (Figure 4B). We also investigated the relationship between CD69 expression on MAIT cells and disease activity. There was a tendency for a positive correlation between the activation status of MAIT cells and disease activity (Figure 4C). These findings suggest that numerical and functional changes and altered activation status of MAIT cells might be caused by AS pathology rather than anti-TNF- α therapy.

DISCUSSION

In our study, we found that the frequency of MAIT cells in the peripheral blood of patients with AS was lower than that in HC. Only the frequency of MAIT cells, among all innate-like lymphocytes abundantly present in the peripheral blood, was significantly reduced in patients with AS. A study by Cho, *et al* reported that the reduction of MAIT cell frequency was not significant in patients with AS¹⁵. Another study showed a tendency for decreased MAIT cell frequency in patients with spondyloarthritis (SpA), including AS²⁷. Although the latter study demonstrated an increase of CD8+ cells and a decrease of DN cells among MAIT cells in patients with SpA, we did not observe these alterations in the frequencies of MAIT cell subpopulations in patients with AS. The reason for these discrepancies among the studies remains unclear. Differences in the population groups and the disease duration might be responsible for the inconsistent findings among these groups. A reduction in the number of MAIT cells in the peripheral blood was also observed in patients with RA as well as other autoimmune disorders, such as multiple sclerosis (MS) and systemic lupus erythematosus^{13,15}. In addition, reduced numbers of peripheral blood MAIT cells were observed in inflammatory, metabolic, or infectious diseases, such as inflammatory bowel diseases (IBD), obesity, type 2 diabetes, human immunodeficiency virus infection, and

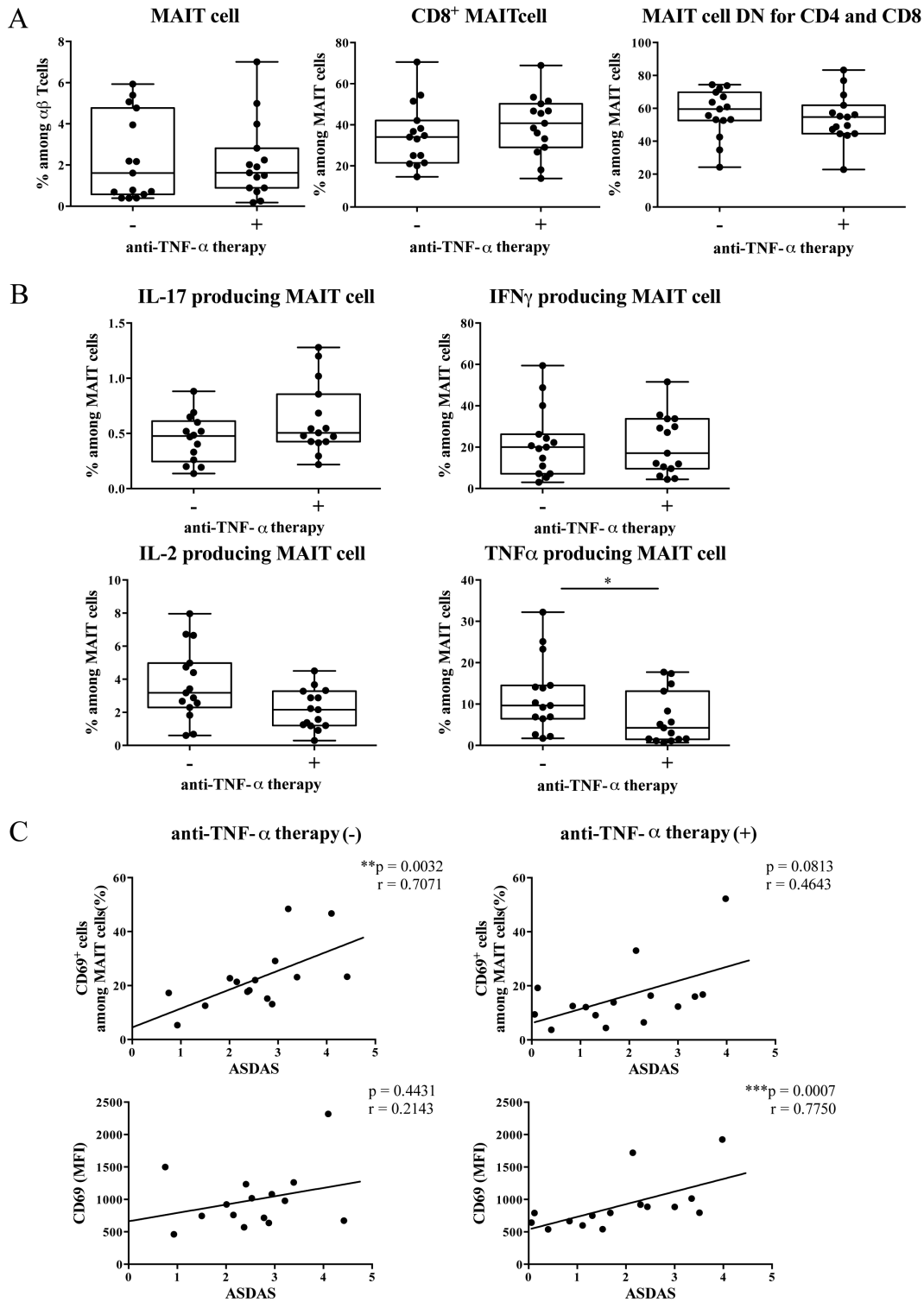


Figure 4. Effects of anti-TNF- α therapy on MAIT cells in patients with AS. (A) Frequency of MAIT cells among $\alpha\beta$ T cells and (B) cytokine-producing MAIT cells in patients with AS receiving (n = 15) and not receiving anti-TNF- α therapy (n = 15). Box indicates the first and third quartile. Line in the box indicates the median. Whiskers indicate the minimum and maximum. * p < 0.05 (Mann-Whitney U test). (C) The correlation of ASDAS with the frequency of CD69-positive MAIT cells (upper panels) and with MFI of CD69 expression on MAIT cells (lower panels) in patients with AS receiving (right panels) and not receiving (left panels) anti-TNF- α therapy was examined using Spearman correlation. Each symbol represents the value of 1 individual. ** p < 0.01. *** p < 0.001. Anti-TNF- α : antitumor necrosis factor- α ; MAIT: mucosal-associated invariant T; AS: ankylosing spondylitis; ASDAS: Ankylosing Spondylitis Disease Activity Score; MFI: mean fluorescence intensity; DN: double negative; IL-17: interleukin 17; IL-2: interleukin 2; IFN- γ : interferon- γ .

tuberculosis^{17,18,19,21,28,29,30}. These findings suggest that MAIT cells are involved in various inflammatory conditions. Further, MAIT cells are present in inflamed tissues in diseases such as MS, IBD, and tuberculosis^{17,18,19,21,31,32}.

Previously, we demonstrated that MAIT cells are reduced in the peripheral blood, but accumulate in the inflamed mucosa of patients with ulcerative colitis (UC)¹⁹. Because of the limited accessibility of the affected axial skeleton and intestinal tissue for analyses, we were unable to determine whether MAIT cells accumulated in the inflamed tissues in patients with AS. Alternatively, we examined whether the apoptosis of MAIT cells was enhanced. Based on the comparable expression of active caspase-3 and FAS by MAIT cells between patients with AS and HC, the reduced peripheral blood frequency of MAIT cells in patients with AS is unlikely to be caused by enhanced cell death. Rather, the reduction of MAIT cell frequency in the peripheral blood might be caused by their accumulation in the inflamed tissues of patients with AS. However, because apoptotic cells are cleared and do not remain in circulation, MAIT cells might be lost from the peripheral blood because of cell death. To uncover the involvement of MAIT cells and the cause of their reduced frequency, MAIT cells should be investigated in the inflamed tissues of patients with AS.

We previously reported that MAIT cells are effector cells in murine models of arthritis¹⁴. To determine whether the effector functions of these cells differ between arthritis and AS, we examined cytokine production from MAIT cells in response to stimulation with PMA/IM. Because other groups in addition to ours have shown that human MAIT cells produce inflammatory cytokines and not antiinflammatory cytokines, we investigated the production of these cytokines by MAIT cells in patients with AS^{11,13,17,20}. The number of IL-17-producing cells was increased significantly in patients with AS. The production of IL-17 by MAIT cells was also enhanced in CD and RA, indicating that the augmentation of IL-17 production represents the activation status of MAIT cells^{15,17}. Moreover, the expression of the activation marker CD69 on MAIT cells correlated with AS disease activity. Human peripheral blood MAIT cells display an effector memory phenotype (CD45RA-CD45RO+ CD62Llo-CD122intCD127hi), and they upregulate the expression of the early activation marker CD69 upon activation^{11,21,24,29,30,31}. We and others reported that the increased expression of CD69 on MAIT cells is associated with elevated cytokine production in patients with UC and obesity^{19,28}. The expression levels of CD69 on MAIT cells were positively correlated with clinical and endoscopic disease activity in patients with UC. These findings support the idea that MAIT cells might be involved in inflammatory conditions, including AS.

In addition to IL-17, a promising therapeutic target of AS³³, inflammatory cytokines including TNF- α are produced by MAIT cells. TNF- α blockers are effective in patients with

AS whose disease remains active despite the use of at least 2 nonsteroidal antiinflammatory drugs over 4 weeks or 1 local corticosteroid injection³⁴. The potent ability of MAIT cells to produce inflammatory cytokines, which are therapeutic targets of AS, suggests that these cells might contribute to the pathogenesis of AS through cytokine production.

Two mechanisms that underlie the activation of MAIT cells have been identified. MR1-restricted antigens originating from the vitamin synthesis pathway in microbes activate MAIT cells²⁴. Similar to other innate-like lymphocytes, MAIT cells can be activated by cytokines such as IL-12 and IL-18 in the absence of exogenous antigens^{31,35,36}. Elevated IL-12 levels³⁷ and abnormalities in the intestinal microbiota^{38,39} were reported in AS and might be associated with disease activity. We showed that CD69 expression on MAIT cells was related to the severity of AS. Therefore, MR1 antigens produced by changes in the composition of the intestinal microbiota or inflammatory cytokines might activate MAIT cells in patients with an active disease.

We showed that MAIT cells are activated but have a reduced frequency in the peripheral blood of patients with AS. Although our present findings suggest the involvement of MAIT cells in AS, further studies to determine the mechanisms underlying the contribution of MAIT cells to disease development and progression will lead to a better understanding of AS pathogenesis. To examine the contribution of MAIT cells in AS, these findings need to be investigated in a longitudinal study with a larger cohort of patients and in relation to AS clinical features such as HLA-B27 positivity and the type of organ involvement. Studies using animal models including HLA-B27 transgenic mice are also informative to understand the involvement of MAIT cells in AS.

ACKNOWLEDGMENT

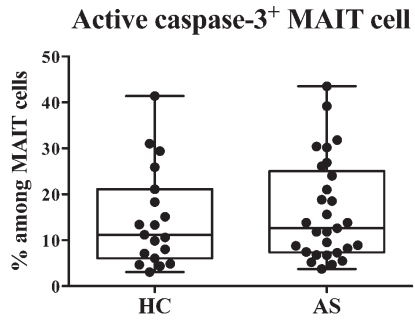
We thank the National Institutes of Health Tetramer Core Facility (contract: HHSN272201300006C) for the provision of CD1d tetramers.

REFERENCES

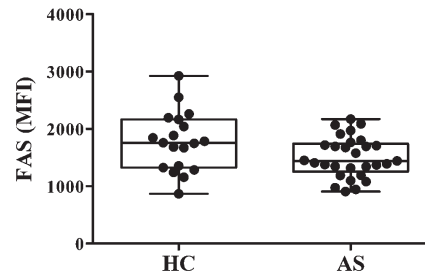
1. Braun J, Sieper J. Ankylosing spondylitis. *Lancet* 2007;369:1379-90.
2. Mielants H, Veys EM. Ileal inflammation in B27-positive reactive arthritis. *Lancet* 1984;1:1072.
3. Mielants H, Veys EM, Cuvelier C, De Vos M, Goemaere S, De Clercq L, et al. The evolution of spondyloarthropathies in relation to gut histology. II. Histological aspects. *J Rheumatol* 1995;22:2273-8.
4. Van Praet L, Van den Bosch FE, Jacques P, Carron P, Jans L, Colman R, et al. Microscopic gut inflammation in axial spondyloarthritis: a multiparametric predictive model. *Ann Rheum Dis* 2013;72:414-7.
5. International Genetics of Ankylosing Spondylitis Consortium (IGAS), Cortes A, Hadler J, Pointon JP, Robinson PC, Karaderi T, et al. Identification of multiple risk variants for ankylosing spondylitis through high-density genotyping of immune-related loci. *Nat Genet* 2013;45:730-8.
6. Tilloy F, Treiner E, Park SH, Garcia C, Lemonnier F, de la Salle H, et al. An invariant T cell receptor alpha chain defines a novel TAP-independent major histocompatibility complex class Ib-restricted alpha/beta T cell subpopulation in mammals. *J Exp Med* 1999;189:1907-21.

7. Treiner E, Duban L, Bahram S, Radosavljevic M, Wanner V, Tilloy F, et al. Selection of evolutionarily conserved mucosal-associated invariant T cells by MR1. *Nature* 2003;422:164-9.
8. Kawachi I, Maldonado J, Strader C, Gilfillan S. MR1-restricted V alpha 19i mucosal-associated invariant T cells are innate T cells in the gut lamina propria that provide a rapid and diverse cytokine response. *J Immunol* 2006;176:1618-27.
9. Martin E, Treiner E, Duban L, Guerri L, Laude H, Toly C, et al. Stepwise development of MAIT cells in mouse and human. *PLoS Biol* 2009;7:e54.
10. Le Bourhis L, Guerri L, Dusseaux M, Martin E, Soudais C, Lantz O. Mucosal-associated invariant T cells: unconventional development and function. *Trends Immunol* 2011;32:212-8.
11. Dusseaux M, Martin E, Serriari N, Peguillet I, Premel V, Louis D, et al. Human MAIT cells are xenobiotic-resistant, tissue-targeted, CD161hi IL-17-secreting T cells. *Blood* 2011;117:1250-9.
12. Croxford JL, Miyake S, Huang YY, Shimamura M, Yamamura T. Invariant V(alpha)19i T cells regulate autoimmune inflammation. *Nat Immunol* 2006;7:987-94.
13. Miyazaki Y, Miyake S, Chiba A, Lantz O, Yamamura T. Mucosal-associated invariant T cells regulate Th1 response in multiple sclerosis. *Int Immunol* 2011;23:529-35.
14. Chiba A, Tajima R, Tomi C, Miyazaki Y, Yamamura T, Miyake S. Mucosal-associated invariant T cells promote inflammation and exacerbate disease in murine models of arthritis. *Arthritis Rheum* 2012;64:153-61.
15. Cho YN, Kee SJ, Kim TJ, Jin HM, Kim MJ, Jung HJ, et al. Mucosal-associated invariant T cell deficiency in systemic lupus erythematosus. *J Immunol* 2014;193:3891-901.
16. Ruijing X, Mengjun W, Xiaoling Z, Shu P, Mei W, Yingcheng Z, et al. Jα33+ MAIT cells play a protective role in TNBS induced intestinal inflammation. *Hepatology* 2012;59:762-7.
17. Serriari NE, Eoche M, Lamotte L, Lion J, Fumery M, Marcelo P, et al. Innate mucosal-associated invariant T (MAIT) cells are activated in inflammatory bowel diseases. *Clin Exp Immunol* 2014; 176:266-74.
18. Hiejima E, Kawai T, Nakase H, Tsuruyama T, Morimoto T, Yasumi T, et al. Reduced numbers and proapoptotic features of mucosal-associated invariant T cells as a characteristic finding in patients with inflammatory bowel disease. *Inflamm Bowel Dis* 2015;21:1529-40.
19. Haga K, Chiba A, Shibuya T, Osada T, Ishikawa D, Kodani T, et al. MAIT cells are activated and accumulated in the inflamed mucosa of ulcerative colitis. *J Gastroenterol Hepatol* 2016;31:965-72.
20. Gold MC, Cerri S, Smyk-Pearson S, Cansler ME, Vogt TM, Delepine J, et al. Human mucosal associated invariant T cells detect bacterially infected cells. *PLoS Biol* 2010;8:e1000407.
21. Le Bourhis L, Martin E, Péguillet I, Guihot A, Froux N, Coré M, et al. Antimicrobial activity of mucosal-associated invariant T cells. *Nat Immunol* 2010;11:701-8.
22. Jo J, Tan AT, Ussher JE, Sandalova E, Tang XZ, Tan-Garcia A, et al. Toll-like receptor 8 agonist and bacteria trigger potent activation of innate immune cells in human liver. *PLoS Pathog* 2014;10:e1004210.
23. Chua WJ, Truscott SM, Eickhoff CS, Blazevic A, Hoft DF, Hansen TH. Polyclonal mucosa-associated invariant T cells have unique innate functions in bacterial infection. *Infect Immun* 2012; 80:3256-67.
24. Kjer-Nielsen L, Patel O, Corbett AJ, Le Nours J, Meehan B, Liu L, et al. MR1 presents microbial vitamin B metabolites to MAIT cells. *Nature* 2012;491:717-23.
25. van der Linden S, Valkenburg HA, Cats A. Evaluation of diagnostic criteria for ankylosing spondylitis. A proposal for modification of the New York criteria. *Arthritis Rheum* 1984;27:361-8.
26. Lukas C, Landewé R, Sieper J, Dougados M, Davis J, Braun J, et al; Assessment of SpondyloArthritis international Society. Development of an ASAS-endorsed disease activity score (ASDAS) in patients with ankylosing spondylitis. *Ann Rheum Dis* 2009;68:18-24.
27. Sugimoto C, Konno T, Wakao R, Fujita H, Fujita H, Wakao H. Mucosal-associated invariant T cell is a potential marker to distinguish fibromyalgia syndrome from arthritis. *PLoS One* 2015;10:e0121124.
28. Magalhaes I, Pingris K, Poitou C, Bessoles S, Venteclef N, Kiaf B, et al. Mucosal-associated invariant T cell alterations in obese and type 2 diabetic patients. *J Clin Invest* 2015;125:1752-62.
29. Leeansyah E, Ganesh A, Quigley MF, Sonnerborg A, Andersson J, Hunt PW, et al. Activation, exhaustion, and persistent decline of the antimicrobial MR1-restricted MAIT-cell population in chronic HIV-1 infection. *Blood* 2013;121:1124-35.
30. Cosgrove C, Ussher JE, Rauch A, Gärtner K, Kurioka A, Hühn MH, et al. Early and nonreversible decrease of CD161+/+MAIT cells in HIV infection. *Blood* 2013;121:951-61.
31. Willing A, Leach OA, Ufer F, Attfield KE, Steinbach K, Kursawe N, et al. CD8+ MAIT cells infiltrate into the CNS and alterations in their blood frequencies correlate with IL-18 serum levels in multiple sclerosis. *Eur J Immunol* 2014;44:3119-28.
32. Illés Z, Shimamura M, Newcombe J, Oka N, Yamamura T. Accumulation of Valpha7.2-Jalpha33 invariant T cells in human autoimmune inflammatory lesions in the nervous system. *Int Immunol* 2004;16:223-30.
33. Baeten D, Sieper J, Braun J, Baraliakos X, Dougados M, Emery P, et al; MEASURE 1 Study Group; MEASURE 2 Study Group. Secukinumab, an interleukin-17A inhibitor, in ankylosing spondylitis. *N Engl J Med* 2015;373:2534-48.
34. van der Heijde D, Sieper J, Maksymowych WP, Dougados M, Burgos-Vargas R, Landewé R, et al; Assessment of SpondyloArthritis international Society. 2010 Update of the international ASAS recommendations for the use of anti-TNF agents in patients with axial spondyloarthritis. *Ann Rheum Dis* 2011;70:905-8.
35. Ussher JE, Bilton M, Attwod E, Shadwell J, Richardson R, de Lara C, et al. CD161++ CD8+ T cells, including the MAIT cell subset, are specifically activated by IL-12+IL-18 in a TCR-independent manner. *Eur J Immunol* 2014;44:195-203.
36. Sattler A, Dang-Heine C, Reinke P, Babel N. IL-15 dependent induction of IL-18 secretion as a feedback mechanism controlling human MAIT-cell effector functions. *Eur J Immunol* 2015; 45:2286-98.
37. Yang ZX, Liang Y, Zhu Y, Li C, Zhang LZ, Zeng XM, et al. Increased expression of Toll-like receptor 4 in peripheral blood leucocytes and serum levels of some cytokines in patients with ankylosing spondylitis. *Clin Exp Immunol* 2007;149:48-55.
38. Gill T, Asquith M, Rosenbaum JT, Colbert RA. The intestinal microbiome in spondyloarthritis. *Curr Opin Rheumatol* 2015;27:319-25.
39. Tani Y, Tiwana H, Hukuda S, Nishioka J, Fielder M, Wilson C, et al. Antibodies to Klebsiella, Proteus, and HLA-B27 peptides in Japanese patients with ankylosing spondylitis and rheumatoid arthritis. *J Rheumatol* 1997;24:109-14.

A



B



APPENDIX 1. Frequency of active caspase-3–positive MAIT cells and FAS expression on MAIT cells from patients with AS and HC. A. The frequency of active caspase-3–positive cells among MAIT cells in the peripheral blood of HC (n = 20) and patients with AS (n = 29) was analyzed by flow cytometry. B. MFI of FAS (CD95) on MAIT cells was analyzed in the same HC and patients with AS (Mann-Whitney U test). Each symbol represents the value of 1 individual. Box indicates the first and third quartile. Line in the box indicates the median. Whiskers indicate the minimum and maximum. MAIT: mucosal-associated invariant T; AS: ankylosing spondylitis; HC: healthy controls; MFI: mean fluorescence intensity;.