

# Obesity Is Associated with Greater Valgus Knee Alignment in Pubertal Children, and Higher Body Mass Index Is Associated with Greater Variability in Knee Alignment in Girls

Sharon Bout-Tabaku, Justine Shults, Babette S. Zemel, Mary B. Leonard, Robert I. Berkowitz, Nicolas Stettler, and Jon M. Burnham

**ABSTRACT. Objective.** In adults, osteoarthritis (OA) is associated with obesity and knee alignment. Whether knee alignment differences develop during childhood and are associated with obesity is unknown. We assessed the distribution of knee alignment in children and adolescents, and determined how knee alignment differs between obese and nonobese children.

**Methods.** This cross-sectional study examined knee alignment in 155 healthy weight and 165 obese subjects. Knee alignment [metaphyseal-diaphyseal angle (MDA) and anterior tibiofemoral angle (ATFA)] and fat mass were measured using whole body dual-energy X-ray absorptiometry (DEXA). National reference data were used to generate age- and sex-specific body mass index (BMI, kg/m<sup>2</sup>) Z-scores. Multivariable linear regression was used to identify independent factors associated with ATFA and MDA.

**Results.** The mean MDA and ATFA were similar between obese and nonobese subjects. In stratified analyses, females had greater variability in MDA and ATFA values ( $p < 0.001$  and  $p = 0.04$ , respectively) at higher BMI Z-scores. Compared with healthy weight controls, obese subjects had less valgus of the MDA prior to the onset of puberty ( $+ 2.0^\circ$ ,  $p = 0.001$ ), but had greater valgus at later pubertal stages ( $-1.9^\circ$ ,  $p = 0.01$ ).

**Conclusion.** We found significantly greater variability in knee alignment among females at higher BMI Z-scores, and greater valgus alignment in obese adolescents in late puberty. The major limitation is the use of DEXA for assessment of alignment, which needs validation against longstanding radiographs. Longitudinal studies are needed to determine whether childhood obesity is a risk factor for progressive malalignment that may predispose to pain and risk of early osteoarthritis. (J Rheumatol First Release Nov 1 2014; doi:10.3899/jrheum.131349)

## Key Indexing Terms:

OBESITY  
VALGUS

DUAL X-RAY ABSORPTIOMETRY  
VARUS

PEDIATRIC  
OSTEOARTHRITIS

From the Department of Pediatrics, Division of Rheumatology, Nationwide Children's Hospital; the Ohio State University College of Medicine, Columbus, Ohio; Department of Pediatrics, Division of Rheumatology, Division of Gastroenterology and Nutrition, Division of Nephrology, The Children's Hospital of Philadelphia; Center for Clinical Epidemiology and Biostatistics, University of Pennsylvania School of Medicine, Philadelphia, Pennsylvania; the Lewin Group, Falls Church, Virginia, USA.

Supported by the American College of Rheumatology Research and Education Foundation and National Institutes of Health (NIH) T32-AR07442-23. Robert I. Berkowitz discloses that data from the sibutramine trial were supported in part by grant DK054713 from the NIH, and from the Clinical and Translational Research Center at The Children's Hospital of Philadelphia, by grants UL1RR024134 (National Center for Research Resources) and UL1TR000003 (National Center for Advancing Translational Sciences). Knoll Pharmaceutical Co. and Abbott Laboratory provided an unrestricted educational grant that was used to support a postdoctoral fellow and several student research assistants involved in the sibutramine trial. Neither Knoll Pharmaceutical Co. nor Abbott Laboratories contributed to the design and conduct, in the collection, analysis, and interpretation of the data, or in the preparation, review, or approval of manuscripts pertaining to the sibutramine data. S. Bout-Tabaku, MD, MSc, Assistant Professor, Department of Pediatrics,

Division of Rheumatology, Nationwide Children's Hospital, and the Ohio State University College of Medicine; J. Shults, PhD, Associate Professor of Biostatistics, Center for Clinical Epidemiology and Biostatistics, University of Pennsylvania School of Medicine; B.S. Zemel, PhD, Professor of Pediatrics, Department of Pediatrics, Division of Gastroenterology and Nutrition, The Children's Hospital of Philadelphia, and the University of Pennsylvania School of Medicine; M.B. Leonard, MD, MSCE, Professor of Pediatrics, Department of Pediatrics, Division of Nephrology, The Children's Hospital of Philadelphia, and the Center for Clinical Epidemiology and Biostatistics, University of Pennsylvania School of Medicine; R.I. Berkowitz, MD, Professor of Psychiatry, University of Pennsylvania School of Medicine; N. Stettler, MD, MSCE, Managing Consultant, the Lewin Group; J.M. Burnham, MD, MSCE, Associate Professor of Pediatrics, Department of Pediatrics, Division of Rheumatology, The Children's Hospital of Philadelphia, and the Center for Clinical Epidemiology and Biostatistics, University of Pennsylvania School of Medicine.

Address correspondence to Dr. S. Bout-Tabaku, Pediatric Rheumatology, Nationwide Children's Hospital, 700 Children's Drive, Columbus, Ohio 43205, USA. E-mail: sharon.bout-tabaku@nationwidechildrens.org  
Accepted for publication September 3, 2014.

Childhood obesity, defined as body mass index (BMI, kg/m<sup>2</sup>) at or above the 95th percentile for a reference population, has tripled since the 1970s. Similarly, obesity comorbidities, such as hypertension<sup>1</sup>, hyperlipidemia<sup>2</sup>, type 2 diabetes, and obstructive sleep apnea syndrome, are increasingly recognized during childhood and are thought to result in greater adult morbidity and mortality<sup>3</sup>. In adults, obesity is a recognized risk factor for the onset and progression of knee osteoarthritis (OA), a leading cause of disability<sup>4</sup>, and a significant health-related economic burden. The incidence of OA is increasing; by 2020, about 59 million people, or 18% of the US population, will be affected<sup>5</sup>. The effect of pediatric obesity on OA indicates that being overweight and obese in the teen years may be associated with pain and OA<sup>6,7,8</sup>.

OA is a progressive, degenerative joint disease affecting the articular cartilage and subchondral bone<sup>9</sup>. While nonmodifiable factors such as genetics and aging are strongly linked to the development and progression of OA, multiple studies suggest that obesity plays a critical role<sup>10</sup>. In addition to the causal relationship of obesity on developing OA, knee malalignment may confer an added risk by causing abnormal biomechanical forces to be transmitted across the joint during ambulation, affecting joint alignment<sup>11</sup>. In adults, varus and valgus malalignment leads to an amplification of medial and lateral OA, respectively<sup>12,13</sup>. In obese adults, valgus and varus knee alignment was associated with knee OA onset<sup>14</sup>.

Typically in childhood, dramatic changes in skeletal size and structure occur. About 25% of peak bone mass is deposited during the 2-year period surrounding peak height velocity<sup>15</sup>. The capacity of bone to respond to mechanical loading with increased bone size and strength is greatest during growth, especially adolescence<sup>16,17</sup>. In fact, childhood obesity is associated with greater whole body bone mineral content<sup>18</sup> and femoral bone strength<sup>19</sup>. However, the effect of altered loading conditions on skeletal alignment in pediatric obesity has not been examined. One study used dual-energy X-ray absorptiometry (DEXA) to demonstrate that knee alignment abnormalities were more common among obese children and adolescents. They found that there was more valgus malalignment in obese children and that angle measures were more variable at higher BMI Z-scores<sup>20</sup>. However, other determinants of knee alignment differences were not assessed, such as sex and pubertal stage differences, both important mediators of knee alignment<sup>21,22</sup>. Although DEXA is not a conventional method and has not been validated to measure knee alignment, it may be an alternative method that can provide measurements of knee alignment and body composition simultaneously.

The objectives of our study were to characterize the distribution of knee alignment in a cohort of obese and healthy weight children and adolescents using DEXA, and to identify independent risk factors for knee malalignment

during childhood, such as sex, race, age, pubertal stage, and obesity. Our *a priori* hypotheses were that valgus knee alignment was greater with greater BMI, and that obesity-related differences in knee alignment would be observed after puberty, when growth is rapid.

## MATERIALS AND METHODS

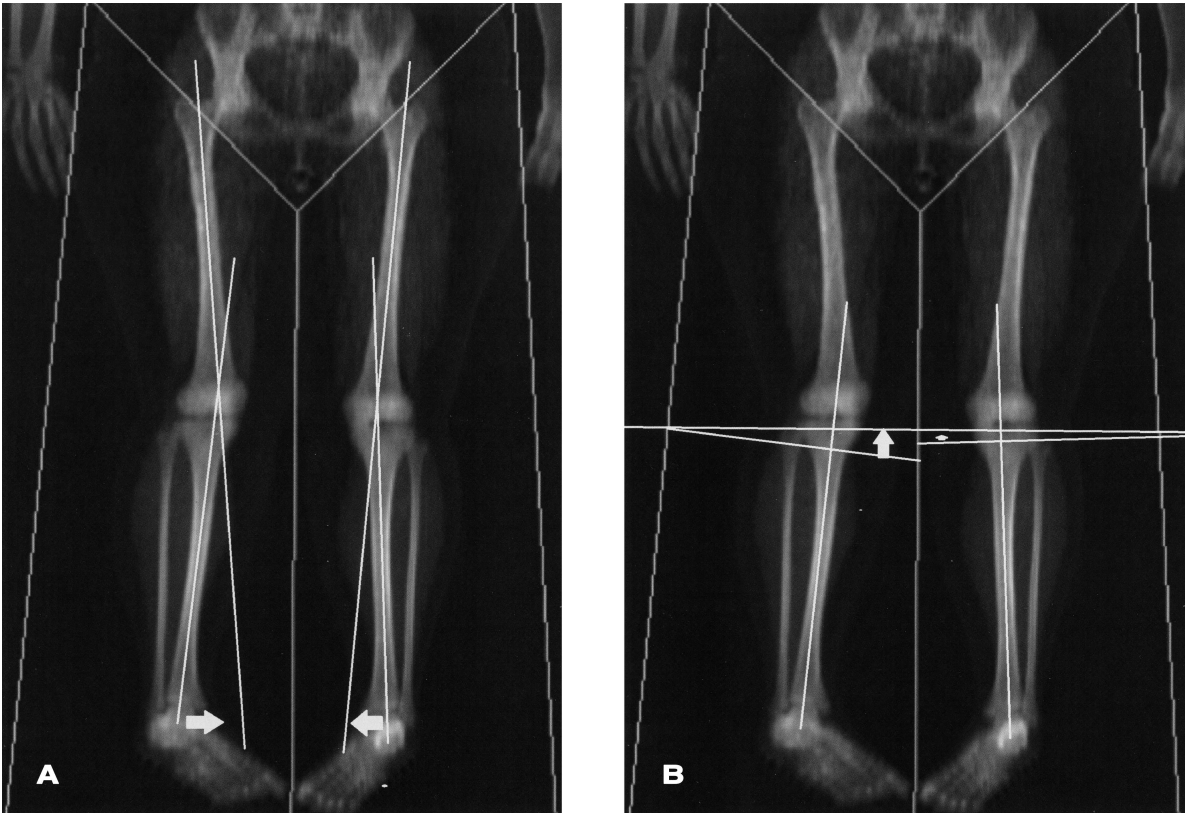
We performed a cross-sectional study using a convenience sample of subjects who had existing DEXA and anthropometric data collected as part of other research studies<sup>18,23,24,25</sup> and clinical care in the Division of Gastroenterology and Nutrition and the Nutrition and Growth Laboratory (NGL) at The Children's Hospital of Philadelphia.

**Subjects.** The study population consisted of subjects from 3 groups. Healthy reference participants (n = 200; reference group), recruited from general pediatric clinics in the surrounding community and through newspaper advertisements, served as a reference group for multiple studies done at the NGL<sup>26</sup>. These participants were 4–20 years of age and the mean BMI Z-score (SD score) was 0.35 ± 1.13. About 16% were obese, comparable to the estimates of obesity among US children and adolescents<sup>27</sup>. Subjects were excluded if any coexisting conditions known to affect growth, nutritional status, dietary intake, pubertal development, or bone mineralization were present. The second group (Weight Management group) consisted of children and adolescents (n = 76) receiving care in a weight management program at The Children's Hospital of Philadelphia over a 3-year period. They were 4–17 years of age, had a mean BMI Z-score of 2.38 ± 0.42, and had whole-body DEXA performed at the initial evaluation prior to any intervention<sup>23</sup>. The third group (sibutramine group) consisted of obese adolescents (n = 78) enrolled in a clinical trial of sibutramine therapy. These participants were 13–17 years of age and had a mean BMI Z-score of 2.42 ± 0.20. Subjects were excluded if they had cardiovascular disease, diabetes, psychiatric disorder, and medications that led to weight loss or weight gain<sup>24</sup>. All of these subjects had whole-body DEXA scans performed prior to any intervention<sup>24</sup>.

For our study, data from all 3 groups were pooled and stratified by obesity status into nonobese and obese groups. Of the 354 subjects with available data, 34 were excluded because of poor-quality images in which identification of bony landmarks was not possible. The BMI Z-scores of the subjects who were excluded did not differ from those who were included (excluded mean 1.38, CI 0.96–1.80 vs included mean 1.23, CI 1.08–1.37, p = 0.52).

**DEXA body composition and knee alignment measurements.** Whole-body DEXA scans were performed using a Hologic QDR 2000 bone densitometer (Hologic Inc.) with a fan beam in the array mode. Measurements were taken in the standard supine position with the feet inverted, and included estimates of lean and fat mass (kg), excluding the head. The instrument was calibrated daily using a hydroxyapatite phantom. The precision of lean and fat mass measures using DEXA is reported as 2–3% and 3–4%, respectively<sup>28</sup>. Sex-specific lean and fat mass-for-height Z-scores were derived from the healthy controls (control group) using the LMS method<sup>29,30</sup>.

DEXA images were used to perform knee alignment measurements with eFilm Lite DICOM image viewing software (Merge Healthcare), by a single observer (SBT). Test-retest reliability was performed by repeat knee alignment measures on the first 30 DEXA scans and 1 of every 10 consecutive scans thereafter by SBT. The anterior tibiofemoral angle (ATFA), analogous to the anatomic knee axis, represented the angle formed between the central axis of the femur and the central axis of the tibia<sup>20,31</sup>. The metaphyseal-diaphyseal angle (MDA) was derived by drawing a line perpendicular to the longitudinal axis of the tibia and a line through the 2 beaks of the proximal tibial metaphysis (Figure 1)<sup>20,32</sup>. For both measures, positive and negative values represent varus and valgus alignment, respectively. These measures were chosen because they are typically used to



**Figure 1.** Knee alignment measures. A. ATFA is the angle formed by the perpendicular lines drawn through the tibial and femoral shaft. B. MDA is the angle formed by the horizontal line drawn through the metaphyseal beaks and the line perpendicular to the tibial shaft. ATFA: anterior tibiofemoral angle; MDA: metaphyseal-diaphyseal angle.

assess knee alignment in children. The MDA is considered a more precise tool to assess early and progressive knee malalignment and both have been used in the diagnosis of children with Blount disease<sup>32,33</sup>. The minimum of the values for the right and left leg ATFA and MDA was used in the analysis. For the analysis, the ATFA and MDA were examined as continuous and categorical variables where the ATFA was defined as normal for angles between +5° and -15°, and MDA between +11° and -11°<sup>20</sup>.

**Anthropometrics and pubertal development.** Weight and height were measured using a digital scale to the nearest 0.1 kg (Scale-Tronix) and a stadiometer to the nearest 0.1 cm (Holtain Ltd.), respectively. Age- and sex-specific Z-scores for weight, height, and BMI were calculated using the National Center for Health Statistics 2000 Center for Disease Control growth data, using the LMS method<sup>34</sup>. Obesity was defined according to the Center for Disease Control and Prevention definition of a BMI greater than or equal to the 95th percentile<sup>35</sup>. Similarly, fat mass was based on a generated Z-score divided into below and above the 95th percentile. Pubertal stage was determined by physical examinations according to the method of Tanner<sup>18,23</sup>. The sibutramine group did not have assessments of pubertal maturation performed. However, given their older age (13–17 yrs) and high mean BMI Z-score, we imputed values of Tanner stage 4 or 5 to all subjects in the group<sup>36,37</sup>. For the analysis, we used all the Tanner levels and combined 4–5.

Our study was approved by the Institutional Review Board of the Children’s Hospital of Philadelphia.

**Statistical analysis.** All statistical analyses were performed using STATA 12 (Stata Corporation). Descriptive analyses included means, SD, median and ranges of continuous variables, and distributions of categorical variables. Differences of means were assessed using Student t test if the

variable was normally distributed. The Wilcoxon Rank Sum test was used if these data were not normally distributed. Group differences in categorical variables were assessed using the chi-square or Fisher’s exact test, where appropriate.

Reliability was assessed using Pearson product-moment estimates and the root mean squared coefficient of variation.

Multivariable linear regression was used to identify independent factors associated with the ATFA and MDA. Sex, race, age, pubertal status, and BMI or fat mass were added at once in the model. A Tanner stage by obesity interaction term was used to assess whether the effect of obesity on ATFA and MDA differed between pubertal groups. The assumptions of the regression models were assessed by means of graphical checks, the Ramsey omitted variable test, and the Cook-Weisburg test for heteroscedasticity.

## RESULTS

**Subjects.** Of the 320 subjects, 165 were obese (52%). Demographic and anthropometric characteristics are detailed in Table 1. Obese subjects were older (11.9 vs 10.5 yrs,  $p < 0.001$ ). Among those who had a formal assessment of Tanner stage, obese participants at stage 3 and stage 4 were significantly younger than their nonobese counterparts ( $p < 0.001$  and  $p = 0.04$ , respectively). The sex and race distributions were similar between obese and nonobese subjects.

**Reliability of alignment measures.** Knee alignment measurements showed high test-retest reliability for both



**Table 1.** Demographic and anthropometric characteristics of the study population. All values are mean ± SD unless otherwise specified. BMI-for-age and fat mass-for-height Z-scores were sex-specific. Ranges in parentheses.

Variable	Obese, n = 165	Non-obese, n = 155	p
Age, yrs	11.9 ± 3.3 (4.4–18.7)	10.5 ± 4.4 (4–20)	0.001
Male sex, %	35	43	0.17
Race, African American, %	41	35	> 0.2
Pubertal stage, %			
Tanner 1	31	58	0.001
Tanner 2	13	12	
Tanner 3	21	8	
Tanner 4–5	36	21	
BMI, kg/m <sup>2</sup>	32 ± 6.3 (18.2–47.4)	18 ± 3.4 (13.0–30.6)	0.001
BMI-for-age			
Z-score	2.4 ± 0.3 (1.7–4.1)	0.02 ± 0.9 (–2.2–1.5)	< 0.001
Fat mass-for-height			
Z-score	1.8 ± 0.6 (0.65–4.4)	–0.28 ± 0.8 (–1.9–2.0)	< 0.001

BMI: body mass index.

knees. For the ATFA:  $r = 0.92–0.95$ ,  $p < 0.001$ . For the MDA:  $r = 0.93–0.95$ ,  $p < 0.001$  (Table 2). While the coefficient of variation showed the MDA measurements to be less reproducible than those of the ATFA, there were no differences in the reproducibility according to obesity status for either measurement ( $p > 0.20$ ).

**Knee alignment measures.** Knee alignment measures were assessed in relation to obesity status, BMI Z-score, and fat mass Z-score. Mean ATFA (obese =  $-10.6 \pm 3.7$  vs non-obese =  $-10.5 \pm 3.4$ ,  $p > 0.20$ ) and MDA (obese =  $-8.7 \pm 4.0$  vs non-obese =  $-8.9 \pm 3.1$ ,  $p > 0.20$ ) angles did not differ by obesity status. Neither the ATFA nor MDA were correlated with either BMI Z-scores or fat mass Z-score.

Further, when the same analysis was repeated by classifying the knee alignment measurements into abnormal and normal alignment<sup>20</sup>, there were no differences by obesity status, BMI Z-score, or fat mass Z-score.

In univariate analysis, to test for associations between ATFA and independent risk factors, we found that sex ( $p < 0.01$ ), age ( $p < 0.05$ ), and Tanner stage ( $p < 0.01$ ) were significantly associated with the ATFA, while race was not. However, the MDA was not associated with these independent risk factors.

Multivariable regression modeling examined associa-

**Table 2.** Intrarater reliability of DEXA knee alignment.

Measurement	RMS CV, %	Correlation, r	p
Right ATFA	11.1	0.95	< 0.001
Left ATFA	10.6	0.92	< 0.001
Right MDA	20.2	0.95	< 0.001
Left MDA	12.9	0.93	< 0.001

RMS CV(x) =  $\sqrt{[(\sum \text{jd}^2/2n)/x]} \times 100$ . DEXA: dual-energy X-ray absorptiometry; ATFA: anterior tibiofemoral angle; MDA: metaphyseal-diaphyseal angle.

tions between obesity and the MDA and ATFA separately, while controlling for sex, race, age, and Tanner stages. Sex and race were not associated with MDA or ATFA values. However, MDA values varied according to Tanner stage and obesity status. In Tanner stage 1, obese subjects had a significantly greater MDA, compared with nonobese subjects ( $1.99^\circ$ ,  $p = 0.001$ ) indicating less valgus alignment. However, in Tanner stages 4–5, obese subjects had a significantly lower MDA compared with nonobese subjects ( $1.89^\circ$ ,  $p = 0.01$ ), indicating greater valgus alignment (Figure 2).

We then examined independent risk factors of the relationship between obesity and knee alignment. In stratified analyses by sex, females had greater variability in MDA and ATFA values ( $p < 0.001$  and  $p = 0.04$ , respectively) at higher BMI Z-scores. In males, the variability in MDA and ATFA values was not significant ( $p > 0.07$  and  $p > 0.20$ , respectively) at higher BMI Z-scores (Figure 3). At higher fat mass Z-scores, the greater variability in MDA values was significant only in females ( $p = 0.001$ ).

We evaluated our *a priori* hypothesis by testing mediators of the relationship between obesity and knee alignment. ATFA and MDA were assessed according to obesity status and stratified by Tanner stage. First, the ATFA values of subjects in Tanner stages 1, 2, 3, and 4–5 were similar among nonobese children. However, the ATFA values of subjects in Tanner stages 4–5 were significantly lower relative to those in Tanner stage 1 ( $p = 0.03$ ), indicating greater valgus alignment among obese subjects (Table 3). Second, the MDA values of subjects in Tanner stages 4–5 were lower relative to those in Tanner stage 1 ( $p = 0.04$ ), indicating greater valgus among nonobese subjects. The MDA values of subjects in Tanner stages 3 and 4–5 were lower relative to those in Tanner stage 1 ( $p = 0.006$  and  $p = 0.001$ ), indicating greater valgus alignment among obese subjects. When comparing knee alignment angles in nonobese and obese children by the mediating role of Tanner stage, only the MDA values significantly differed. In Tanner stage 1, obese children had less valgus alignment, but in Tanner stages 4–5 obese children had greater valgus alignment (Figure 2 and Table 3).

## DISCUSSION

In our study comparing knee alignment in obese and nonobese children, we demonstrated that pubertal stage modified the relationship between obesity and knee alignment. Specifically, obese children in Tanner 1 had less valgus while those in Tanner 4–5 had greater valgus alignment compared to their nonobese counterparts. Additionally, there was greater variability in knee alignment among girls with higher BMI Z-scores.

Bone and cartilage are mechanically sensitive tissue and remodel in response to prolonged loading in the periarticular

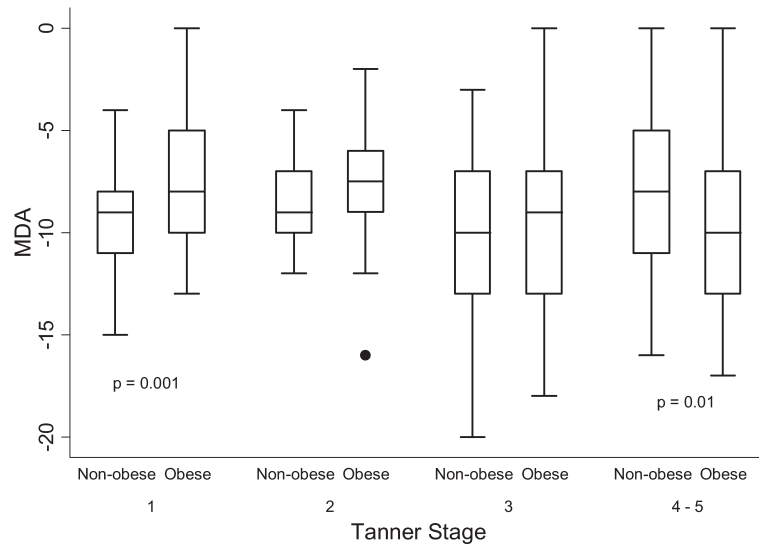


Figure 2. Box-and-whisker plot demonstrating the MDA distribution for obese and nonobese children at Tanner stages 1–5. In Tanner stages 1–5, obese children had greater valgus alignment compared with nonobese children ( $p = 0.01$ ). Analyses were adjusted for sex, race, and age. MDA: metaphyseal-diaphyseal angle.

areas where most of the pressure is exerted. In Blount disease (tibia vara), histopathology shows fissuring and clefts in the physis, fibrovascular, and cartilaginous tissue consistent with microscopic damage because of mechanical compression<sup>38</sup>. In healthy children, knee articular cartilage accrual is independently associated with vigorous physical activity, showing that articular cartilage, like bone, responds to mechanical skeletal forces during development<sup>39</sup>. We hypothesize that these mechanisms are particularly active in the rapidly maturing skeleton and may explain our finding of greater valgus alignment in obese adolescents<sup>40</sup>.

Our study expanded on a study by Taylor, *et al*<sup>20</sup> by specifically assessing how pubertal development and body composition affect the relation between obesity and knee alignment. In the obese children, we obtained mean MDA and ATFA values similar to those of Taylor, *et al*<sup>20</sup>. However, we could not reproduce their findings that a larger proportion of obese children had abnormal angles when knee alignment was dichotomized (normal ATFA  $+5^\circ$  to  $-15^\circ$  and MDA  $+11^\circ$  to  $-11^\circ$ ). While Taylor, *et al* concluded that obese children had significantly greater valgus using the MDA, we found this association significant only at Tanner stages 4 and 5<sup>20</sup>. These discrepancies between our studies may be explained by the wider age range and BMI Z-score representation in our study.

Although we used a novel technique to measure knee alignment, we found that our data in healthy-weight children were similar to existing normative data on knee alignment that use conventional techniques<sup>21,22,31,41</sup>. Typically, the tibiofemoral angle progresses from varus to valgus from birth to 3 years of age and approaches 4–7° of physiologic valgus alignment in children aged 5–18 years<sup>21,22,31,41</sup>. In

nonobese children older than 4 years, we obtained a mean ATFA of  $-10.5 \pm 3.4$  of physiologic valgus. Although we did find more children in postpubertal valgus alignment, we did not find a trend of greater valgus among obese children in the prepubertal stages (Tanner 2 and 3), consistent with our hypothesis that the rapid pubertal growth may allow for greater loads to amplify knee alignment. Further, less valgus was seen among children in Tanner stage 1; a plausible explanation is that these children are physiologically transitioning from varus to valgus alignment, but the children who are obese, because of greater loading, may not attain physiologic valgus.

Nonphysiologic alignment is associated with pathologic disease states. In children, knee malalignment leads to abnormal mechanics, damage to the cartilage, and pain<sup>38</sup>. In fact, pain and satisfaction scores in children with Blount disease after correction improved and were associated with a narrow MDA score between  $-5^\circ$  and  $+5^\circ$  and ATFA score of  $0^\circ$  to  $-5^\circ$ <sup>42</sup>. Longterm followup of children with physiologic genu varum followed for 36 years found that two-thirds of the children showed no symptoms while one-third reported pain and stiffness<sup>43</sup>. In adults, varus and valgus malalignment in combination with obesity is associated with incident and progressive knee OA<sup>12,13,14</sup>. We documented a clear association between obesity and nonphysiologic valgus knee alignment among older adolescents.

Our study had limitations that should be considered. First, our study was a cross-sectional design of existing data that used DEXA to assess bone mass and body composition estimates. We used DEXA to assess alignment to expand on the findings of Taylor, *et al*, although the gold standard for the assessment of knee alignment is a standing radiograph.

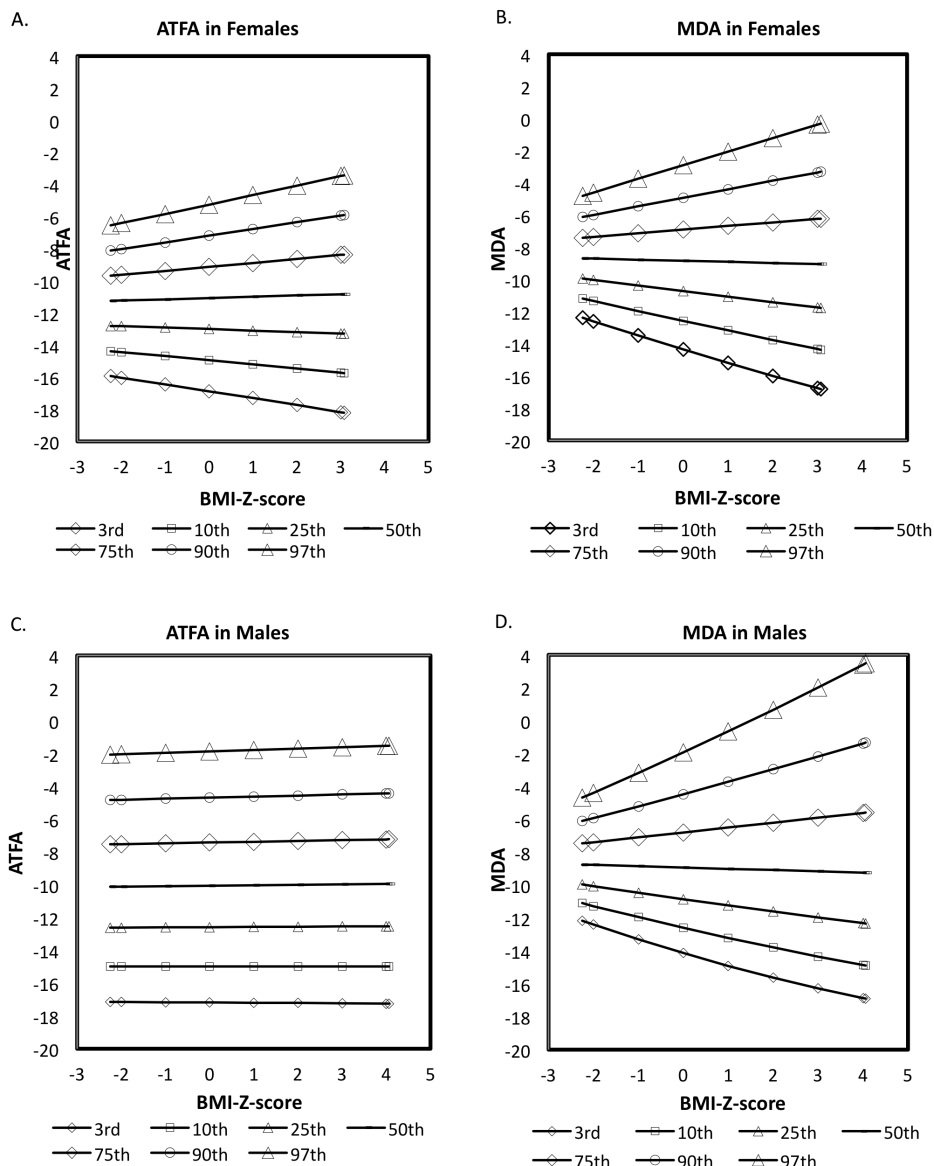


Figure 3. Distribution of ATFA and MDA by BMI Z-scores. ATFA among females (A) is significant ( $p < 0.04$ ). MDA among females (B) is significant ( $p < 0.001$ ). ATFA among males (C) is not significant ( $p > 0.2$ ). MDA among males (D) is not significant ( $p > 0.07$ ). Positive values = varus. Negative values = valgus. ATFA: anterior tibiofemoral angle; MDA: metaphyseal-diaphyseal angle; BMI: body mass index.

However, we demonstrated adequate test-retest reliability to measure knee alignment. Second, DEXA is performed with the patient supine, eliminating weight-bearing, which may have attenuated differences between obese and nonobese participants. We expect that our significant findings would have been amplified using standing weight-bearing radiographs. Third, our DEXA protocol was standardized with the feet immobilized and inverted. Although this protocol may have caused minimal rotation of the hips, the protocol and the assessment of knee alignment did not differ between obese and nonobese children. Fourth, in research studies, the mechanical axis is typically assessed, but the anatomic axis

is being favored and correlates well with the mechanical axis<sup>44</sup>.

Fifth, though the MDA is considered to be a more precise measure for early diagnosis of bowleg deformity and assessment of varus progression in children<sup>32</sup>, but not for valgus progression, we chose to replicate the findings by Taylor, *et al* while cognizant that more work is needed to standardize DEXA measurements against longstanding radiographs. The Taylor, *et al* paper and our data suggest that DEXA may be an alternative imaging modality for knee alignment once validated against standard measures. If true, we could study both knee alignment and anthropometry in

**Table 3.** Relationship between obesity and pubertal stage on the MDA and ATFA. All values are mean  $\pm$  SD in degrees. Negative MDA and ATFA values indicate valgus alignment. The minimum of the 2 values for ATFA and MDA from the right and left legs was used in the analysis. Analyses were adjusted for sex, race, age, Tanner stages, and obesity.

Measurement	Nonobese, n = 155	p Versus Tanner 1	Obese, n = 165	p Versus Tanner 1	p, Obese Versus Nonobese
<b>MDA</b>					
Tanner 1	-9.2 $\pm$ 2.0	—	-7.2 $\pm$ 4.0	—	0.001
Tanner 2	-8.6 $\pm$ 2.0	> 0.2	-7.7 $\pm$ 3.0	> 0.2	> 0.2
Tanner 3	-9.7 $\pm$ 5.0	> 0.2	-9.7 $\pm$ 5.0	0.006	> 0.2
Tanner 4-5	-7.9 $\pm$ 4.0	0.035	-9.8 $\pm$ 4.0	0.001	0.01
<b>ATFA</b>					
Tanner 1	-10.0 $\pm$ 3.0	—	-9.8 $\pm$ 4.0	—	> 0.2
Tanner 2	-10.9 $\pm$ 3.0	> 0.2	-9.5 $\pm$ 4.0	> 0.2	> 0.2
Tanner 3	-11.9 $\pm$ 4.0	0.07	-10.9 $\pm$ 4.0	0.17	> 0.2
Tanner 4-5	-11.0 $\pm$ 4.0	0.15	-11.4 $\pm$ 4.0	0.03	> 0.2

MDA: metaphyseal-diaphyseal angle; ATFA: anterior tibiofemoral angle.

obese children while minimizing the number of studies and radiation exposure to children. We were unable to validate DEXA against the gold standard because we used existing data from older studies examining bone health and were not able to recall subjects. Finally, because this is a cross-sectional study, causality cannot be determined.

We describe an association between obesity, pubertal maturation, and knee alignment that may have short- and long-term implications for musculoskeletal health. We report for the first time, to the best of our knowledge, that girls with higher BMI Z-scores have greater variability in knee alignment and that there is greater valgus alignment in obese adolescents in late puberty. Our study highlights the pressing need for research on the musculoskeletal burden of obesity and the pediatric roots of OA. A first step would be to evaluate DEXA measures against the gold standard measures of knee alignment. Future studies are needed to better define the clinical and functional significance of varus and valgus in obese children, to standardize measurements, and to determine whether childhood obesity is a risk factor for abnormal knee alignment and joint remodeling over the long term.

## REFERENCES

- Gardner M, Gardner DW, Sowers JR. The cardiometabolic syndrome in the adolescent. *Pediatr Endocrinol Rev* 2008;5 Suppl 4:964-8.
- Daniels SR, Greer FR. Lipid screening and cardiovascular health in childhood. *Pediatrics* 2008;122:198-208.
- Whitlock EP, Williams SB, Gold R, Smith PR, Shipman SA. Screening and interventions for childhood overweight: a summary of evidence for the US Preventive Services Task Force. *Pediatrics* 2005;116:e125-44.
- Reijman M, Pols HA, Bergink AP, Hazes JM, Belo JN, Lievens AM, et al. Body mass index associated with onset and progression of osteoarthritis of the knee but not of the hip: the Rotterdam Study. *Ann Rheum Dis* 2007;66:158-62.
- Lawrence RC, Helmick CG, Arnett FC, Deyo RA, Felson DT, Giannini EH, et al. Estimates of the prevalence of arthritis and selected musculoskeletal disorders in the United States. *Arthritis Rheum* 1998;41:778-99.
- Must A, Jacques PF, Dallal GE, Bajema CJ, Dietz WH. Long-term morbidity and mortality of overweight adolescents. A follow-up of the Harvard Growth Study of 1922 to 1935. *N Engl J Med* 1992;327:1350-5.
- Wills AK, Black S, Cooper R, Coppack RJ, Hardy R, Martin KR, et al. Life course body mass index and risk of knee osteoarthritis at the age of 53 years: evidence from the 1946 British birth cohort study. *Ann Rheum Dis* 2012;71:655-60.
- Macfarlane GJ, de Silva V, Jones GT. The relationship between body mass index across the life course and knee pain in adulthood: results from the 1958 birth cohort study. *Rheumatology* 2011;50:2251-6.
- Loeser RF. Aging and osteoarthritis: the role of chondrocyte senescence and aging changes in the cartilage matrix. *Osteoarthritis Cartilage* 2009;17:971-9.
- Grotle M, Hagen KB, Natvig B, Dahl FA, Kvien TK. Obesity and osteoarthritis in knee, hip and/or hand: an epidemiological study in the general population with 10 years follow-up. *BMC Musculoskelet Disord* 2008;9:132.
- Block JA, Shakoor N. The biomechanics of osteoarthritis: implications for therapy. *Curr Rheumatol Rep* 2009;11:15-22.
- Sharma L, Song J, Felson DT, Cahue S, Shamiyeh E, Dunlop DD. The role of knee alignment in disease progression and functional decline in knee osteoarthritis. *JAMA* 2001;286:188-95.
- Cerejo R, Dunlop DD, Cahue S, Channin D, Song J, Sharma L. The influence of alignment on risk of knee osteoarthritis progression according to baseline stage of disease. *Arthritis Rheum* 2002;46:2632-6.
- Brouwer GM, Tol AW, Bergink AP, Belo JN, Bernsen RM, Reijman M, et al. Association between valgus and varus alignment and the development and progression of radiographic osteoarthritis of the knee. *Arthritis Rheum* 2007;56:1204-11.
- Bailey DA, McKay HA, Mirwald RL, Crocker PR, Faulkner RA. A six-year longitudinal study of the relationship of physical activity to bone mineral accrual in growing children: the university of Saskatchewan bone mineral accrual study. *J Bone Miner Res* 1999;14:1672-9.
- Kannus P, Haapasalo H, Sankelo M, Sievanen H, Pasanen M, Heinonen A, et al. Effect of starting age of physical activity on bone mass in the dominant arm of tennis and squash players. *Ann Intern Med* 1995;123:27-31.
- Parfitt AM. The two faces of growth: benefits and risks to bone integrity. *Osteoporos Int* 1994;4:382-98.
- Leonard MB, Shults J, Wilson BA, Tershakovec AM, Zemel BS.

- Obesity during childhood and adolescence augments bone mass and bone dimensions. *Am J Clin Nutr* 2004;80:514-23.
19. Petit MA, Beck TJ, Shults J, Zemel BS, Foster BJ, Leonard MB. Proximal femur bone geometry is appropriately adapted to lean mass in overweight children and adolescents. *Bone* 2005; 36:568-76.
  20. Taylor ED, Theim KR, Mirch MC, Ghorbani S, Tanofsky-Kraff M, Adler-Wailes DC, et al. Orthopedic complications of overweight in children and adolescents. *Pediatrics* 2006;117:2167-74.
  21. Cahuzac JP, Vardon D, Sales de Gauzy J. Development of the clinical tibiofemoral angle in normal adolescents. A study of 427 normal subjects from 10 to 16 years of age. *J Bone Joint Surg Br* 1995;77:729-32.
  22. Sabharwal S, Zhao C, Edgar M. Lower limb alignment in children: reference values based on a full-length standing radiograph. *J Pediatr Orthop* 2008;28:740-6.
  23. Foster BJ, Shults J, Zemel BS, Leonard MB. Interactions between growth and body composition in children treated with high-dose chronic glucocorticoids. *Am J Clin Nutr* 2004;80:1334-41.
  24. Berkowitz RI, Wadden TA, Tershakovec AM, Cronquist JL. Behavior therapy and sibutramine for the treatment of adolescent obesity: a randomized controlled trial. *JAMA* 2003;289:1805-12.
  25. Burnham JM, Shults J, Semeao E, Foster B, Zemel BS, Stallings VA, et al. Whole body BMC in pediatric Crohn disease: independent effects of altered growth, maturation, and body composition. *J Bone Miner Res* 2004;19:1961-8.
  26. Leonard MB, Elmi A, Mostoufi-Moab S, Shults J, Burnham JM, Thayu M, et al. Effects of sex, race, and puberty on cortical bone and the functional muscle bone unit in children, adolescents, and young adults. *J Clin Endocrinol Metab* 2010;95:1681-9.
  27. Ogden CL, Carroll MD, Flegal KM. High body mass index for age among US children and adolescents, 2003-2006. *JAMA* 2008;299:2401-5.
  28. Ellis KJ. Human body composition: in vivo methods. *Physiol Rev* 2000;80:649-80.
  29. Ogden CL, Kuczmarski RJ, Flegal KM, Mei Z, Guo S, Wei R, et al. Centers for Disease Control and Prevention 2000 growth charts for the United States: improvements to the 1977 National Center for Health Statistics version. *Pediatrics* 2002;109:45-60.
  30. Burnham JM, Shults J, Semeao E, Foster BJ, Zemel BS, Stallings VA, et al. Body-composition alterations consistent with cachexia in children and young adults with Crohn disease. *Am J Clin Nutr* 2005;82:413-20.
  31. Salenius P, Vankka E. The development of the tibiofemoral angle in children. *J Bone Joint Surg Am* 1975;57:259-61.
  32. Levine AM, Drennan JC. Physiological bowing and tibia vara. The metaphyseal-diaphyseal angle in the measurement of bowleg deformities. *J Bone Joint Surg Am* 1982;64:1158-63.
  33. Feldman MD, Schoenecker PL. Use of the metaphyseal-diaphyseal angle in the evaluation of bowed legs. *J Bone Joint Surg Am* 1993;75:1602-9.
  34. Ogden CL, Flegal KM, Carroll MD, Johnson CL. Prevalence and trends in overweight among US children and adolescents, 1999-2000. *JAMA* 2002;288:1728-32.
  35. Centers for Disease Control and Prevention. About BMI for children and teens. [Internet. Accessed September 18, 2014.] Available from: [www.cdc.gov/healthyweight/assessing/bmi/childrens\\_bmi/about\\_childrens\\_bmi.html](http://www.cdc.gov/healthyweight/assessing/bmi/childrens_bmi/about_childrens_bmi.html)
  36. Heger S, Korner A, Meigen C, Gausche R, Keller A, Keller E, et al. Impact of weight status on the onset and parameters of puberty: analysis of three representative cohorts from central Europe. *J Pediatr Endocrinol Metab* 2008;21:865-77.
  37. Rosenfield RL, Lipton RB, Drum ML. Thelarche, pubarche, and menarche attainment in children with normal and elevated body mass index. *Pediatrics* 2009;123:84-8.
  38. Herring JA, ed. Tachdjian's pediatric orthopedics, 4th ed. Philadelphia: Elsevier; 2008.
  39. Jones G, Ding C, Glisson M, Hynes K, Ma D, Cicuttini F. Knee articular cartilage development in children: a longitudinal study of the effect of sex, growth, body composition, and physical activity. *Pediatr Res* 2003;54:230-6.
  40. Thorp LE, Wimmer MA, Block JA, Moio KC, Shott S, Goker B, et al. Bone mineral density in the proximal tibia varies as a function of static alignment and knee adduction angular momentum in individuals with medial knee osteoarthritis. *Bone* 2006;39:1116-22.
  41. Heath CH, Staheli LT. Normal limits of knee angle in white children—genu varum and genu valgum. *J Pediatr Orthop* 1993;13:259-62.
  42. Jones JK, Gill L, John M, Goddard M, Hambleton IR. Outcome analysis of surgery for Blount disease. *J Pediatr Orthop* 2009;29:730-5.
  43. Zayer M. Long-term results after physiological genu varum. *J Pediatr Orthop B* 2000;9:271-7.
  44. Kraus VB, Vail TP, Worrell T, McDaniel G. A comparative assessment of alignment angle of the knee by radiographic and physical examination methods. *Arthritis Rheum* 2005;52:1730-5.