

Static Knee Alignment Measurements among Caucasians and African Americans: The Johnston County Osteoarthritis Project

AMANDA E. NELSON, LARISSA BRAGA, ANDRESA BRAGA-BAIAK, JULIUS ATASHILI, TODD A. SCHWARTZ, JORDAN B. RENNER, CHARLES G. HELMICK, and JOANNE M. JORDAN

ABSTRACT. *Objective.* To determine if knee alignment measures differ between African Americans and Caucasians without radiographic knee osteoarthritis (rOA).

Methods. A single knee was randomly selected from 175 participants in the Johnston County Osteoarthritis Project without rOA in either knee. Anatomic axis, condylar, tibial plateau, and condylar plateau angles were measured by 1 radiologist; means were compared and adjusted for age and body mass index (BMI).

Results. There were no significant differences in knee alignment measurements between Caucasians and African Americans among men or women.

Conclusion. Observed differences in knee rOA occurrence between African Americans and Caucasians are not explained by differences in static knee alignment. (First Release July 15 2009; J Rheumatol 2009;36:1987–90; doi:10.3899/jrheum.081294)

Key Indexing Terms:

KNEE OSTEOARTHRITIS

RACIAL DIFFERENCES

KNEE ALIGNMENT

Static knee malalignment contributes to osteoarthritis (OA) progression at the knee, with varus alignment leading to increased odds of medial compartment progression, and valgus alignment to more lateral progression¹. The extent of malalignment is related to magnitude of joint space narrow-

ing (JSN), accelerated functional decline, and increased pain, over 18 months of followup¹. There may be an association between malalignment and incident radiographic knee OA (knee rOA), although data are inconsistent²⁻⁴.

Known racial/ethnic differences in knee OA prevalence^{5,6} suggest that race/ethnicity and alignment might be related. Lateral knee rOA was more common among elderly Chinese compared to Caucasians; greater valgus alignment was identified as a potential explanatory factor in a subsample of 100 individuals without knee rOA⁵. Recently, a larger followup study (n = 570) evaluated static knee alignment indices among Chinese and Caucasian subjects without knee rOA, confirming greater valgus alignment among Chinese subjects⁷. We have previously identified increased odds of lateral JSN among African American men [odds ratio (OR) 2.19, 95% confidence interval (CI) 1.32-3.65] and African American women (OR 1.48, 95% CI 1.02-2.16) compared to their Caucasian counterparts⁸. The purpose of this study was to assess whether differences exist in indices of static knee alignment between African Americans and Caucasians without knee rOA that might contribute to the increased risk of lateral JSN at the knee in African Americans.

MATERIALS AND METHODS

This cross-sectional analysis used baseline visit (1991-97) data from the Johnston County Osteoarthritis Project, described in detail elsewhere⁶. In brief, this is a population-based study of OA in rural North Carolina among African Americans and Caucasians aged 45 years and older. All individuals underwent anteroposterior, weight-bearing, extended knee radiography, and all radiographs were read for Kellgren-Lawrence (K-L) grade by a

From the Thurston Arthritis Research Center, University of North Carolina, Chapel Hill, North Carolina; Department of Radiology, University of Nebraska, Omaha, Nebraska, USA; University of São Paulo, São Paulo, Brazil; Departments of Epidemiology, Biostatistics, and Radiology, University of North Carolina, Chapel Hill, North Carolina; and the Centers for Disease Control and Prevention, Atlanta, Georgia, USA.

The Johnston County Osteoarthritis Project is funded by the Centers for Disease Control and Prevention/Association of Schools of Public Health S043, and S3486. Dr. Nelson's support is through the Rheumatology Fellowship Training Grant T-32-AR007416 and a John A. Hartford Foundation CoE Fellowship Grant. The findings and conclusions in this report are those of the authors and do not necessarily represent the official position of the Centers for Disease Control and Prevention.

A.E. Nelson, MD, Clinical Fellow, Department of Medicine, University of North Carolina at Chapel Hill; L. Braga, MD, MPH, Assistant Professor, Department of Radiology, University of Nebraska Medical Center at Omaha; A. Braga-Baiak, MD, Postgraduate Program, University of São Paulo; J. Atashili, MD, MPH, Doctoral student, Department of Epidemiology; T.A. Schwartz, DrPH, Research Assistant Professor, Department of Biostatistics; J.B. Renner, MD, Professor, Departments of Radiology and Allied Health Sciences, University of North Carolina at Chapel Hill; C.G. Helmick, MD, Medical Epidemiologist, Centers for Disease Control and Prevention; J.M. Jordan, MD, MPH, Professor, Departments of Medicine, Orthopaedics, and Epidemiology, University of North Carolina at Chapel Hill.

Address correspondence to Dr. A.E. Nelson, Thurston Arthritis Research Center, University of North Carolina at Chapel Hill, 3300 Thurston Bldg, CB #7280, Chapel Hill, NC 27599-7280.

E-mail: AENelson@unch.unc.edu

Accepted for publication April 7, 2009.

Personal non-commercial use only. The Journal of Rheumatology Copyright © 2009. All rights reserved.

single musculoskeletal radiologist (JBR) for whom inter- and intrarater reliability were high (kappas 0.86 and 0.89, respectively)⁹. Participants without knee rOA (n = 175) were randomly selected by sex and race; a single knee from each individual was randomly selected for study (115 knees with K-L grade = 0; 60 knees with K-L grade = 1). A difference of 2 degrees in anatomic axis was chosen to calculate sample size based on the observed differences in the Beijing and Framingham samples⁷. Using a 2-sided 0.05 significance level, a sample size of 43 knees per group (African American men and women, Caucasian men and women) was needed to achieve 90% power to detect a 2 degree difference in anatomic axis (this sample size provides 68% power to detect a 1.5 degree difference).

Alignment measurements were performed by a trained musculoskeletal radiologist (ABB), based on the method described by Harvey, *et al*⁷ and Cooke, *et al*¹⁰. Intrareader reliabilities (38 films) using intraclass correlation statistics were excellent (0.85 to 0.97). Measurements were made by

hand directly on 14 × 17 inch knee films, a method comparable to full-length limb radiographs¹¹ and to digital alignment measurements¹². The following angles (degrees) were assessed (Figure 1): (a) Anatomic axis: angle between lines drawn from the visual center of the femur and tibia at a point 10 cm from the joint line, through visual midpoint of the tibial spines; (b) Condylar angle: angle between a line tangent to the distal end of the femur (condylar line) and the line through visual center of the femur; (c) Tibial plateau angle: angle between a line tangent to the lateral aspect of the tibial plateau (tibial plateau line) and the line through the visual center of the tibia; and (d) Condylar-plateau angle: angle formed by the condylar line and the tibial plateau line.

Statistical analyses used SAS version 9 (SAS Institute, Cary, NC, USA). Means for each continuous measurement were compared using analysis of covariance, adjusting for age and body mass index (BMI); all analyses were stratified due to known sex differences⁵.

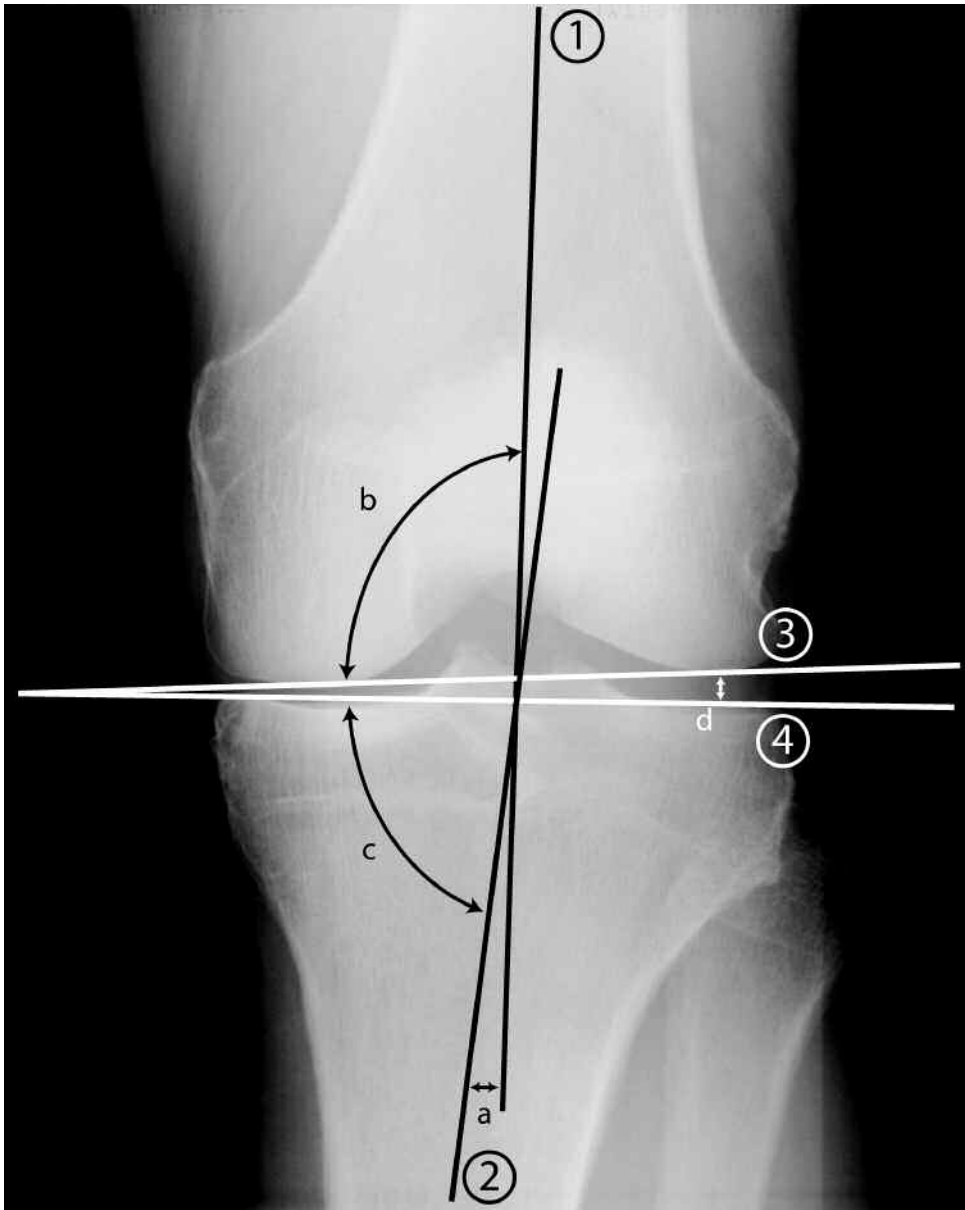


Figure 1. Varus knee, showing measurements of static alignment based on Harvey, *et al*⁷. (1) Femoral anatomic axis line. (2) Tibial anatomic axis line. (3) Condylar line. (4) Tibial plateau line. a. Anatomic axis angle. b. Condylar angle. c. Tibial plateau angle. d. Condylar plateau angle.

RESULTS

There were 92 male knees and 83 female knees included in the study (Table 1). The mean age for men was 59, and for women 62 years; age did not differ by race within sexes. The mean BMI was 27 kg/m² for men; Caucasian men were significantly heavier than African American men (p = 0.04). For women, the mean BMI was 28 kg/m²; African American women were significantly heavier than Caucasian women (p = 0.003). For Caucasian and African American knees, the proportion with K-L grade 1 was similar among men (27% vs 31%, respectively) and women (43% vs 37%).

The mean anatomic angle was > 180 degrees for all groups, and greater in men than in women (Table 1). No differences were seen by race, in men or women, in any of the knee angles or standard deviations (SD) (Figure 1, Table 1).

DISCUSSION

We did not identify any significant differences in measures of static knee alignment or their SD among African Americans and Caucasians without knee rOA. Our overall results were qualitatively similar to those reported by Harvey, *et al* for the Framingham cohort⁷. That group identified more valgus alignment among subjects from Beijing without knee rOA, with a larger SD, in comparison to Framingham subjects, and concluded that the Beijing subjects' tendency toward valgus alignment may explain the observed increase in lateral rOA among Beijing compared to Framingham participants⁷. In our study, we found no significant differences by race within sexes. The differences observed in our study were extremely small, ranging from 0.1 to 0.5 degrees, and would be highly unlikely to be clinically meaningful or reach statistical significance even in a much larger sample. Therefore, it seems unlikely that variations in static knee alignment are responsible for the differences in knee rOA pattern or prevalence we have previously observed among African Americans and Caucasians. We did not assess symptoms in the current analysis, and full-length radiographs were not available, so variations in proximal or

distal anatomy could have been missed¹³. However, the methods used were directly comparable to other published studies. Other potential factors, such as hip anatomic differences and dynamic alignment⁴, need to be explored further, ideally in a young, healthy population, to better understand the race differences in knee rOA patterns and prevalence.

ACKNOWLEDGMENT

Thanks to the Johnston County Osteoarthritis Project staff and participants, and to Erik Myers for his help with the figure.

REFERENCES

1. Sharma L, Song J, Felson DT, Cahue S, Shamiyeh E, Dunlop DD. The role of knee alignment in disease progression and functional decline in knee osteoarthritis. *JAMA* 2001;286:188-95.

2. Brouwer GM, van Tol AW, Bergink AP, et al. Association between valgus and varus alignment and the development and progression of radiographic osteoarthritis of the knee. *Arthritis Rheum* 2007;56:1204-11.

3. Hunter DJ, Niu J, Felson DT, et al. Knee alignment does not predict incident osteoarthritis: the Framingham osteoarthritis study. *Arthritis Rheum* 2007;56:1212-8.

4. Chang A, Song JM, Dunlop DD, et al. Differences in varus and valgus thrust between African-Americans and Caucasians: Data from the Osteoarthritis Initiative (OAI). *Arthritis Rheum* 2008;58 Suppl:S423-4.

5. Felson DT, Nevitt MC, Zhang Y, et al. High prevalence of lateral knee osteoarthritis in Beijing Chinese compared with Framingham Caucasian subjects. *Arthritis Rheum* 2002;46:1217-22.

6. Jordan JM, Helmick CG, Renner JB, et al. Prevalence of knee symptoms and radiographic and symptomatic knee osteoarthritis in African Americans and Caucasians: The Johnston County Osteoarthritis Project. *J Rheumatol* 2007;34:172-80.

7. Harvey WF, Niu J, Zhang Y, et al. Knee alignment differences between Chinese and Caucasian subjects without osteoarthritis. *Ann Rheum Dis* 2008;67:1524-8.

8. Braga L, Renner JB, Schwartz TA, et al. Differences in radiographic features of knee osteoarthritis in African-Americans and Caucasians: The Johnston County Osteoarthritis Project. *Osteoarthritis Cartilage* 2009; in press.

9. Jordan JM, Linder GF, Renner JB, Fryer JG. The impact of arthritis in rural populations. *Arthritis Care Res* 1995;8:242-50.

Table 1. Sample characteristics and knee alignment measures among Caucasians and African Americans stratified by sex. Values are mean (SD) unless otherwise indicated.

	Men			Women		
	Caucasian, n = 47	African American, n = 45	p	Caucasian, n = 42	African American, n = 41	p
Age, yrs	58.8 (9.6)	58.5 (10.2)	0.90*	63.2 (9.3)	60.3 (8.0)	0.35*
BMI, kg/m ²	27.9 (5.1)	25.6 (5.4)	0.04*	26.3 (4.8)	30.2 (6.6)	< 0.01*
K-L grade = 1, %	27.7	31.1	0.72*	42.9	36.6	0.56*
AA	182.1 (4.2)	182.0 (3.6)	0.99†	180.9 (4.5)	181.4 (4.1)	0.65†
CA	95.5 (2.4)	95.1 (2.6)	0.39†	94.8 (2.8)	95.4 (2.6)	0.32†
PA	87.3 (2.2)	87.6 (2.1)	0.43†	87.1 (2.6)	87.2 (2.0)	0.73†
CP	1.32 (2.3)	1.38 (2.3)	0.77†	1.83 (2.5)	1.68 (2.0)	0.77†

Comparing means in Caucasians to African Americans*; † within sex and adjusted for age and body mass index (BMI). SD: standard deviation; K-L: Kellgren-Lawrence; AA: anatomic axis; CA: condylar angle; PA: tibial plateau angle; CP: condylar-plateau angle.

10. Cooke TD, Harrison L, Khan B, Scudamore A, Chaudhary MA. Analysis of limb alignment in the pathogenesis of osteoarthritis: a comparison of Saudi Arabian and Canadian cases. *Rheumatol Int* 2002;22:160-4.
11. Kraus VB, Vail TP, Worrell T, McDaniel G. A comparative assessment of alignment angle of the knee by radiographic and physical examination methods. *Arthritis Rheum* 2005;52:1730-5.
12. Sailer J, Scharitzer M, Peloschek P, Giurea A, Imhof H, Grampp S. Quantification of axial alignment of the lower extremity on conventional and digital total leg radiographs. *Eur Radiol* 2005;15:170-3.
13. Cooke TDV, Sled EA, Scudamore RA. Frontal plane knee alignment: A call for standardized measurement. *J Rheumatol* 2007;34:1796-801.